



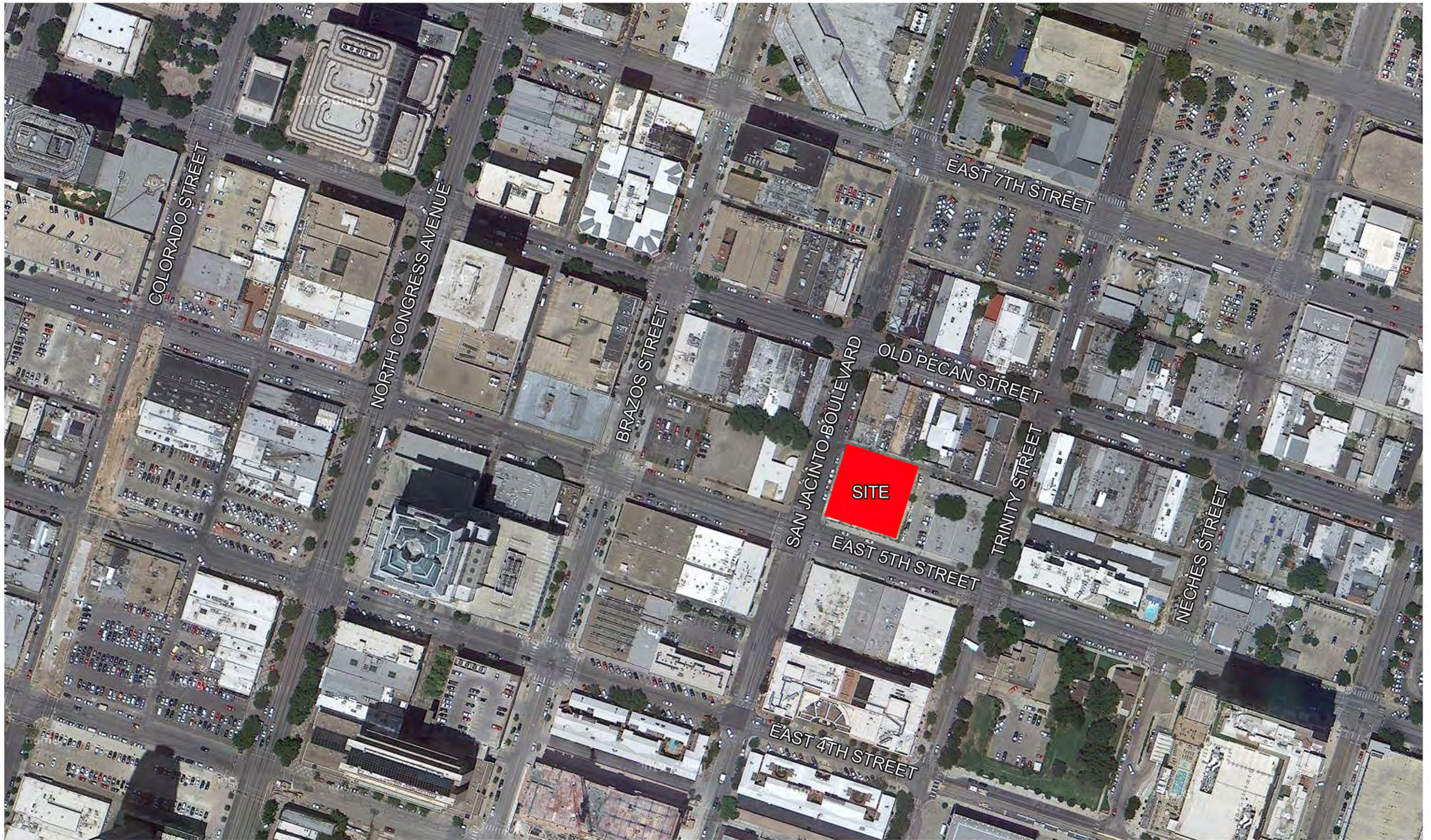
Proposed HOTEL in downtown AUSTIN, TX.

East 5th Street / San Jacinto Street



05 OCTOBER 2012







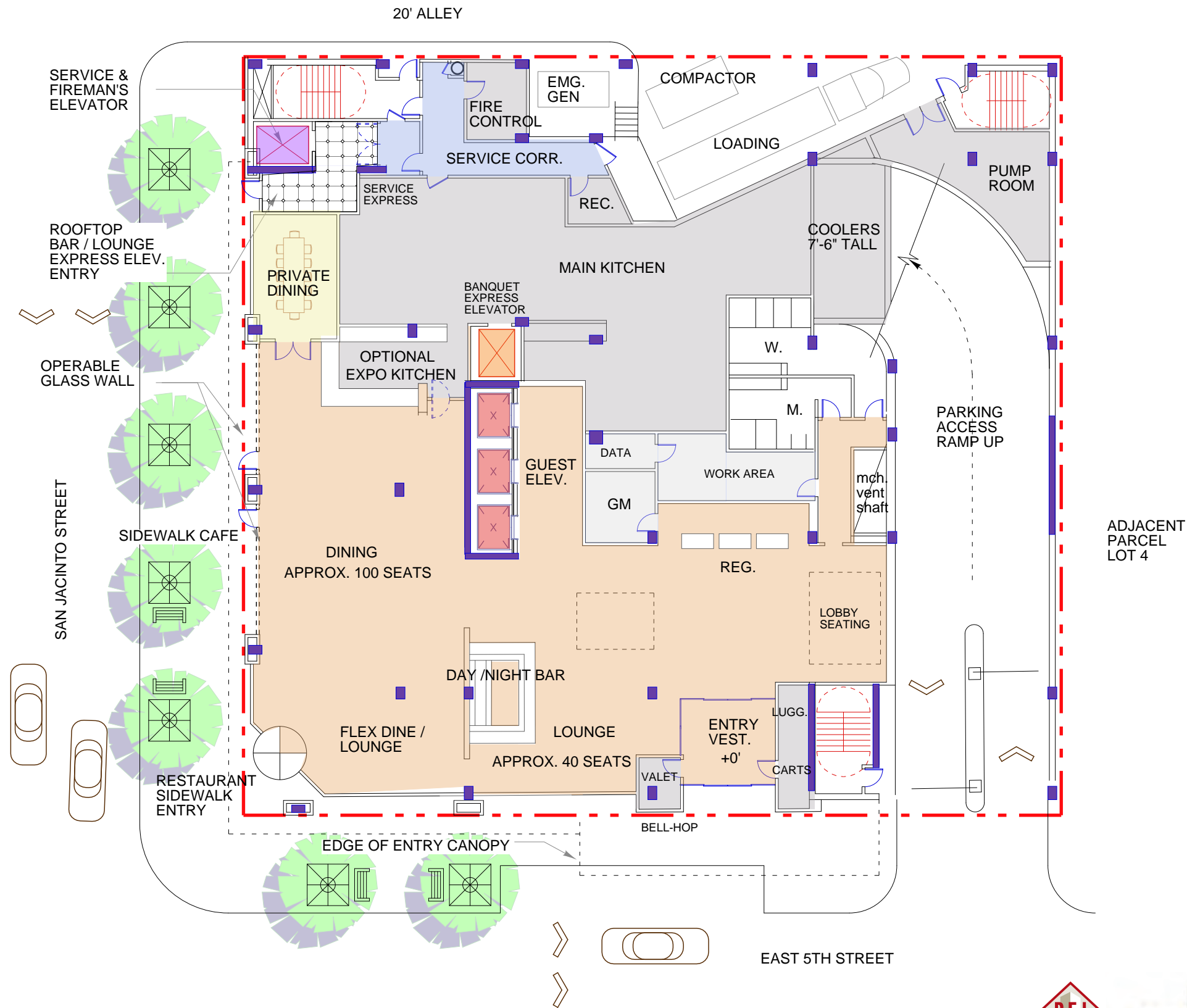


---

DRAWN BY	■	KHS
DESIGNED BY	■	RAC
REVIEWED BY	■	ZMH
DATE	■	10/01/12

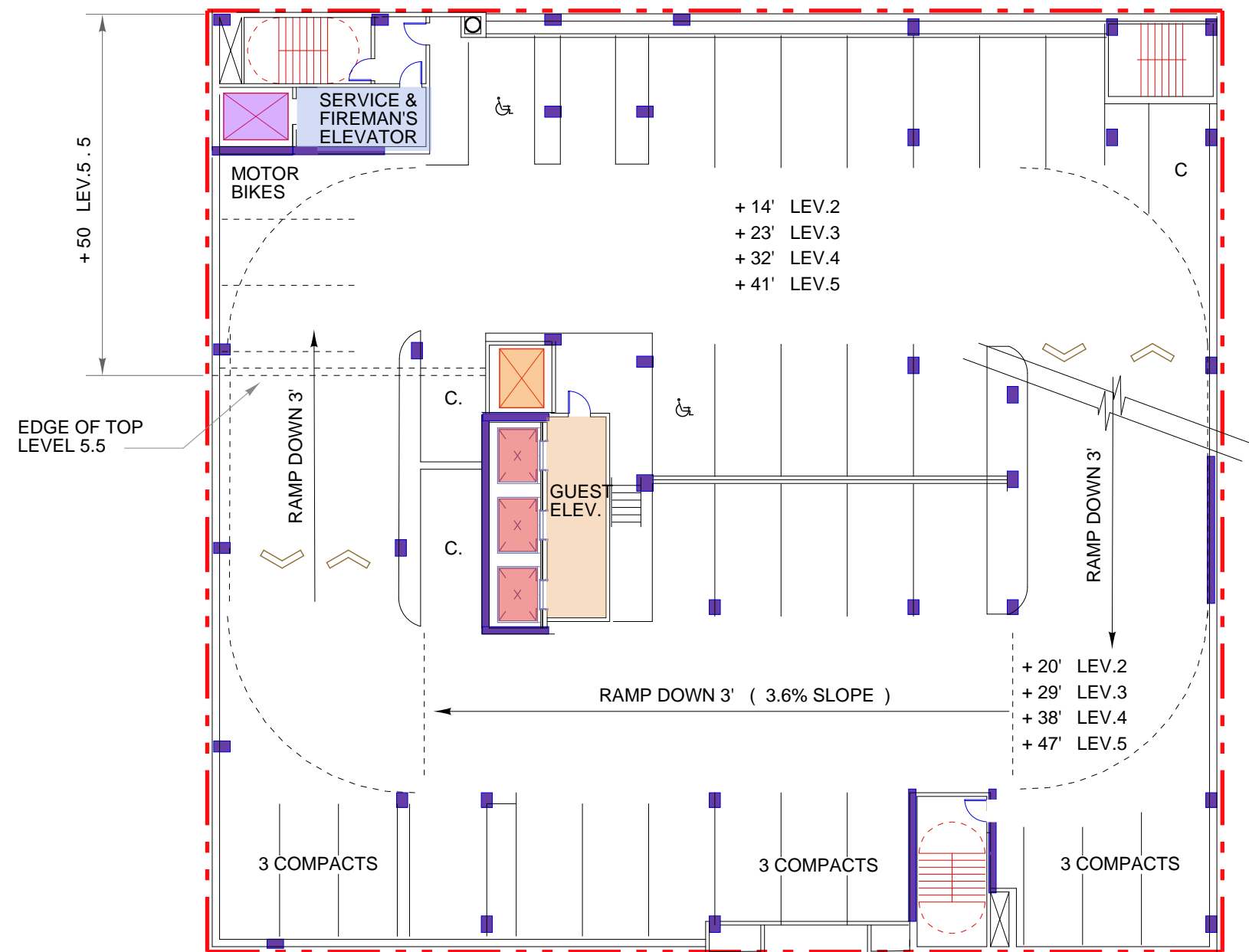
JOB # 0109008-10002

**SP-00-**

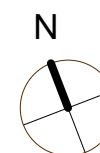


**LEVEL 1**  
 14' FL. TO FL. (LOWEST)  
 17' FL. TO FL. (IN FRONT)  
 N

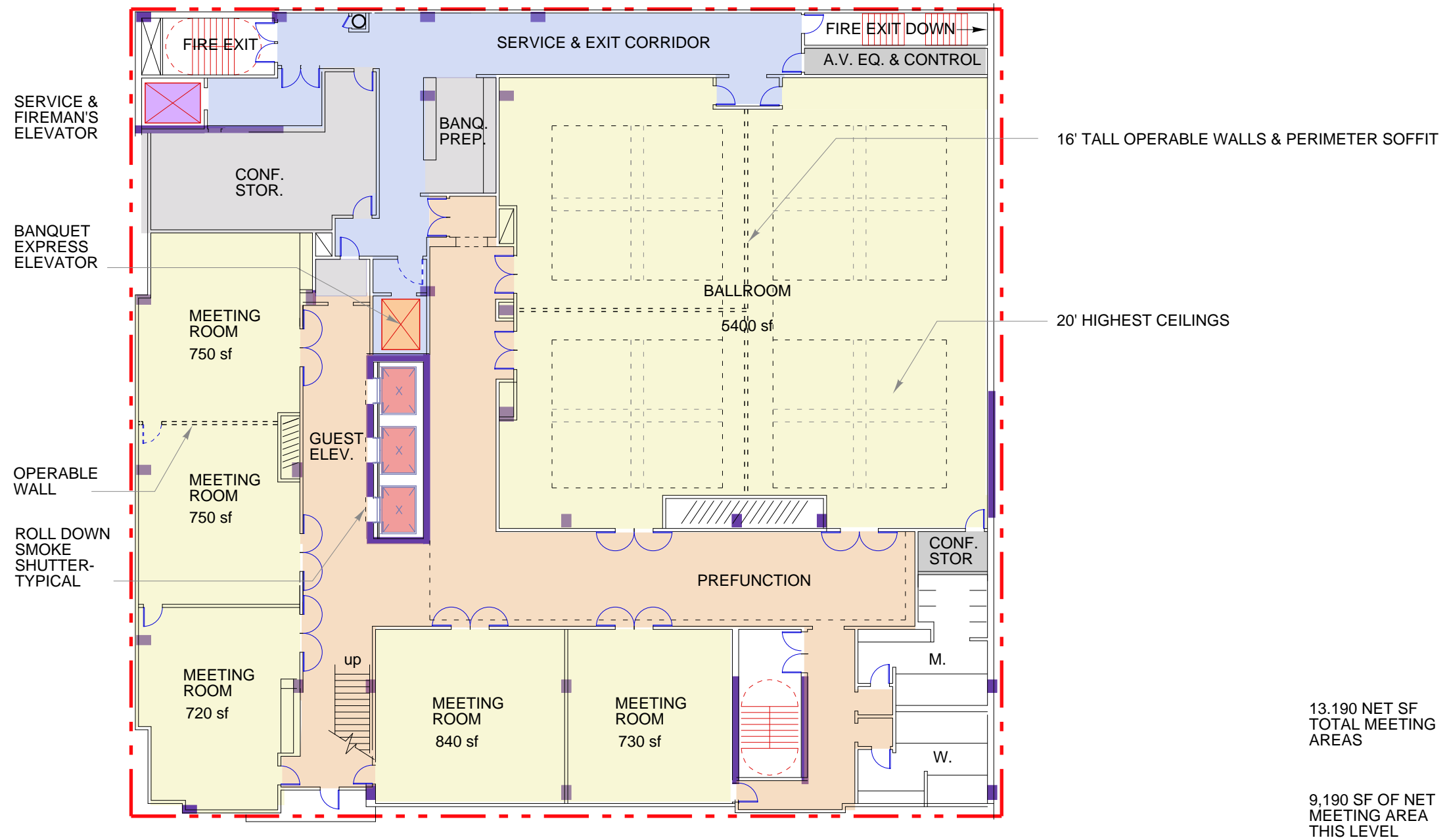




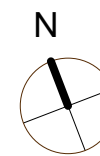
LEVEL 2 - 5.5  
9' FL. TO FL.

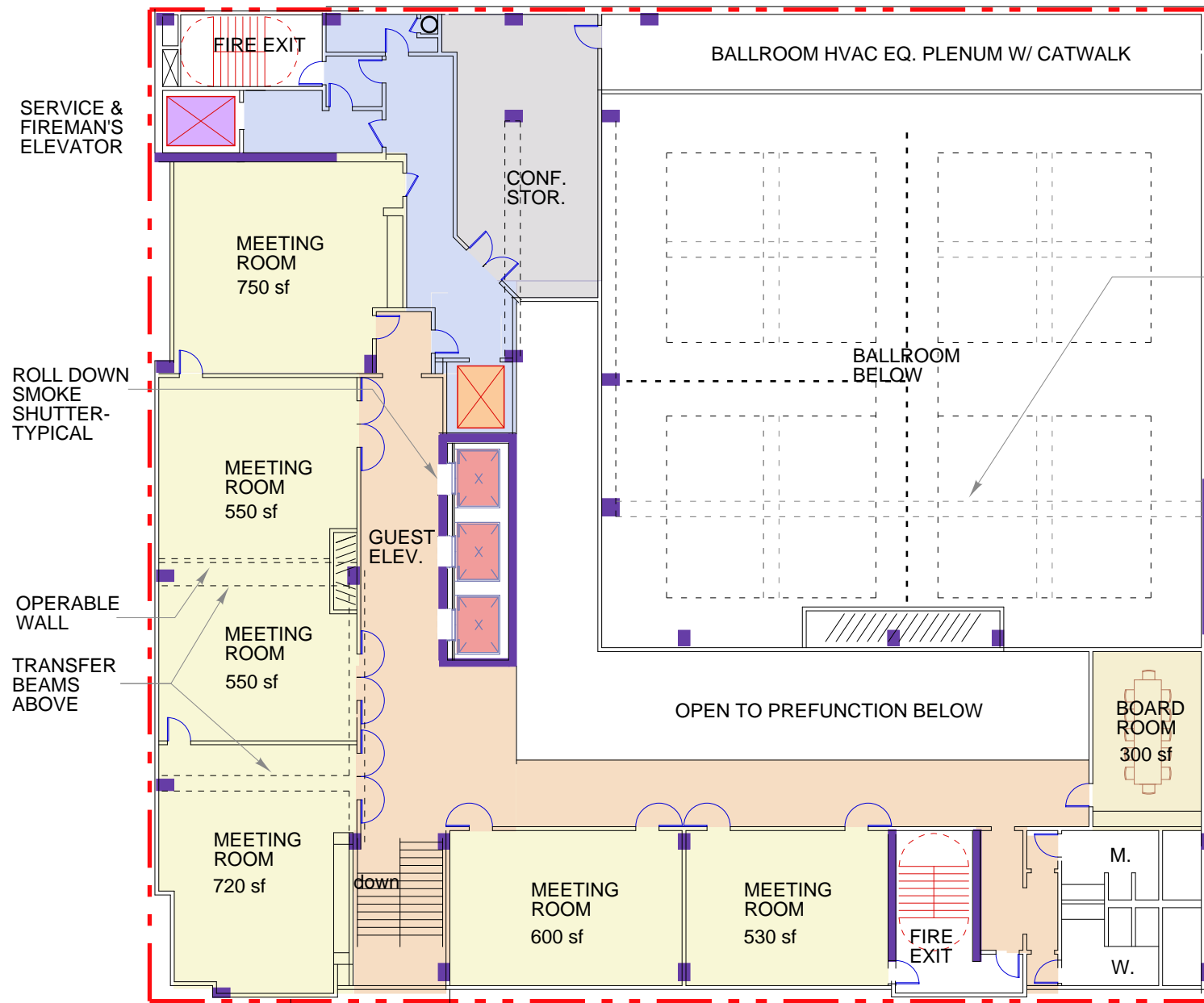






**LEVEL 6**  
14' FL. TO FL.  
28' AT BALLRM.





18' HIGH GRID (CONCEALING TRANSFER TRUSS)  
 NOTE: A 4,400 SF CLEAR BALLROOM IS POSSIBLE, WITH NO TRANSFER TRUSS, IF THE FRONT BALLROOM WALL IS PLACED HERE, IN LINE WITH THE GUEST TOWER STRUCTURE EDGE ABOVE.

4,000 sf NET MEETING AREA THIS LEVEL

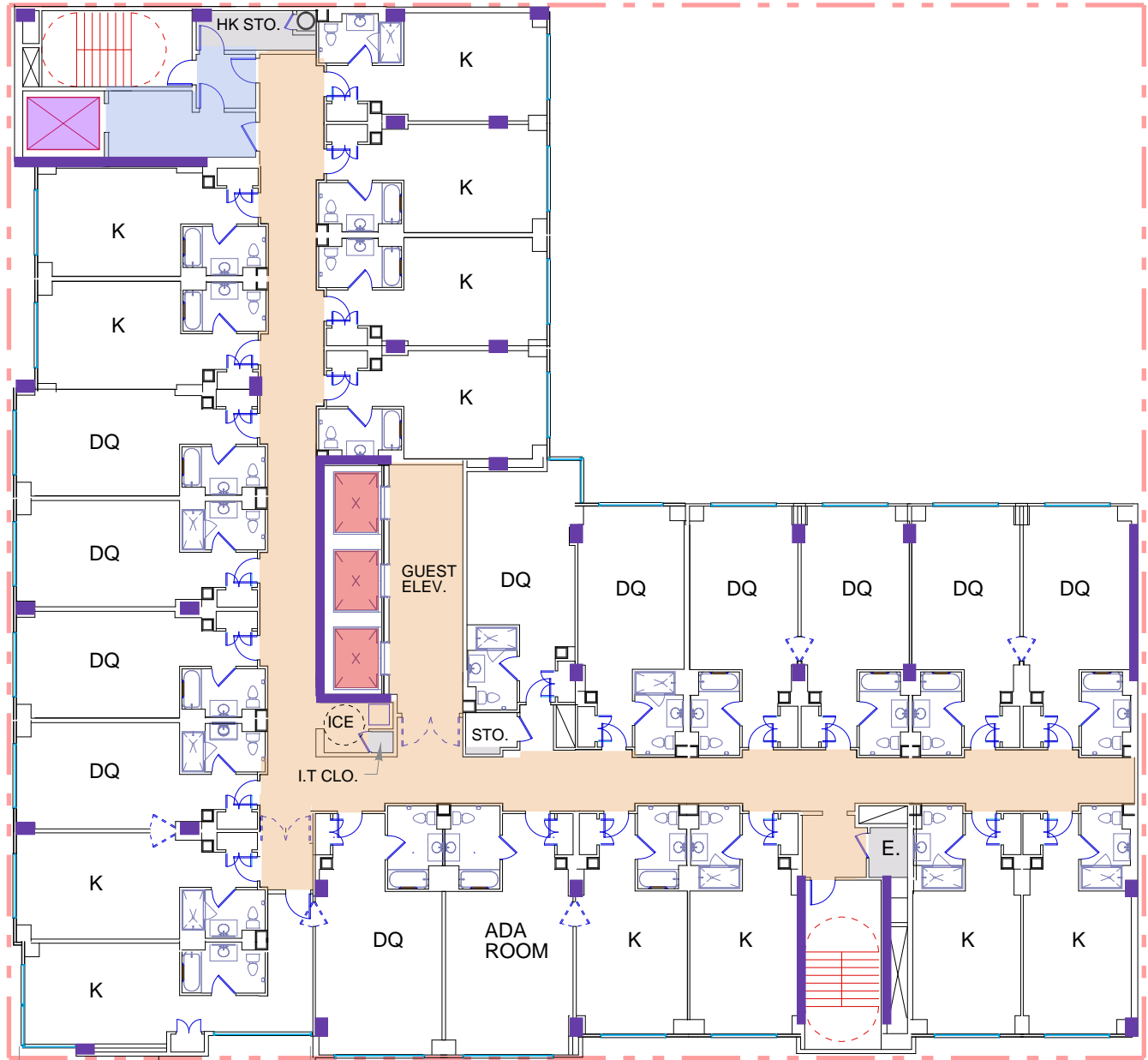
LEVEL 7  
 14' FL. TO FL.







SERVICE & FIREMAN'S ELEVATOR



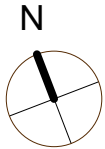
TWO BAY SUITES @  
LEVELS 19 & 20  
SUITE DESIGN T.B.D.

HOTEL & PARKING SUMMARY:

	HOTEL SF	PARKING SF	# KEYS
BASEMENT	See Below		-
1ST LEVEL	12,800	2,600	-
2ND LEV. PARKING	1,400	15,900	-
3RD LEV. PARKING	1,400	15,900	-
4TH LEV. PARKING	1,400	15,900	-
5TH LEV. PARKING	1,400	15,900	-
5.5 LEV. PARKING	1,400	8,000	-
6TH LEV. CONF.	16,700	-	-
7TH LEV. CONF.	9,100	-	-
8TH LEVEL	12,900	-	24
9TH LEVEL	12,900	-	24
10TH LEVEL	12,900	-	24
11TH LEVEL	12,900	-	24
12TH LEVEL	12,900	-	24
13TH LEVEL	12,900	-	24
14TH LEVEL	12,900	-	24
15TH LEVEL	12,900	-	24
16TH LEVEL	12,900	-	24
17TH LEVEL	12,900	-	24
18TH LEVEL	12,900	-	24
19TH LEVEL	12,900	-	23
20TH LEVEL	12,900	-	23
ROOF LEVEL	3,600	-	-
TOTALS:	215,500 Plus 10,000 SF BASEMENT	74,200	310 KEYS 695 SF / KEY NOT INCLUDING BASEMENT

F.A.R. 13 = 229,632 SF ALLOWED INCLUDING BASEMENT

TYPICAL  
LEVELS 9 - 20  
9'-4" FL. TO FL.  
15' FL. TO ROOF TOP LEV.



© DESIGN COPYRIGHT 2012

PROJECT # 12008

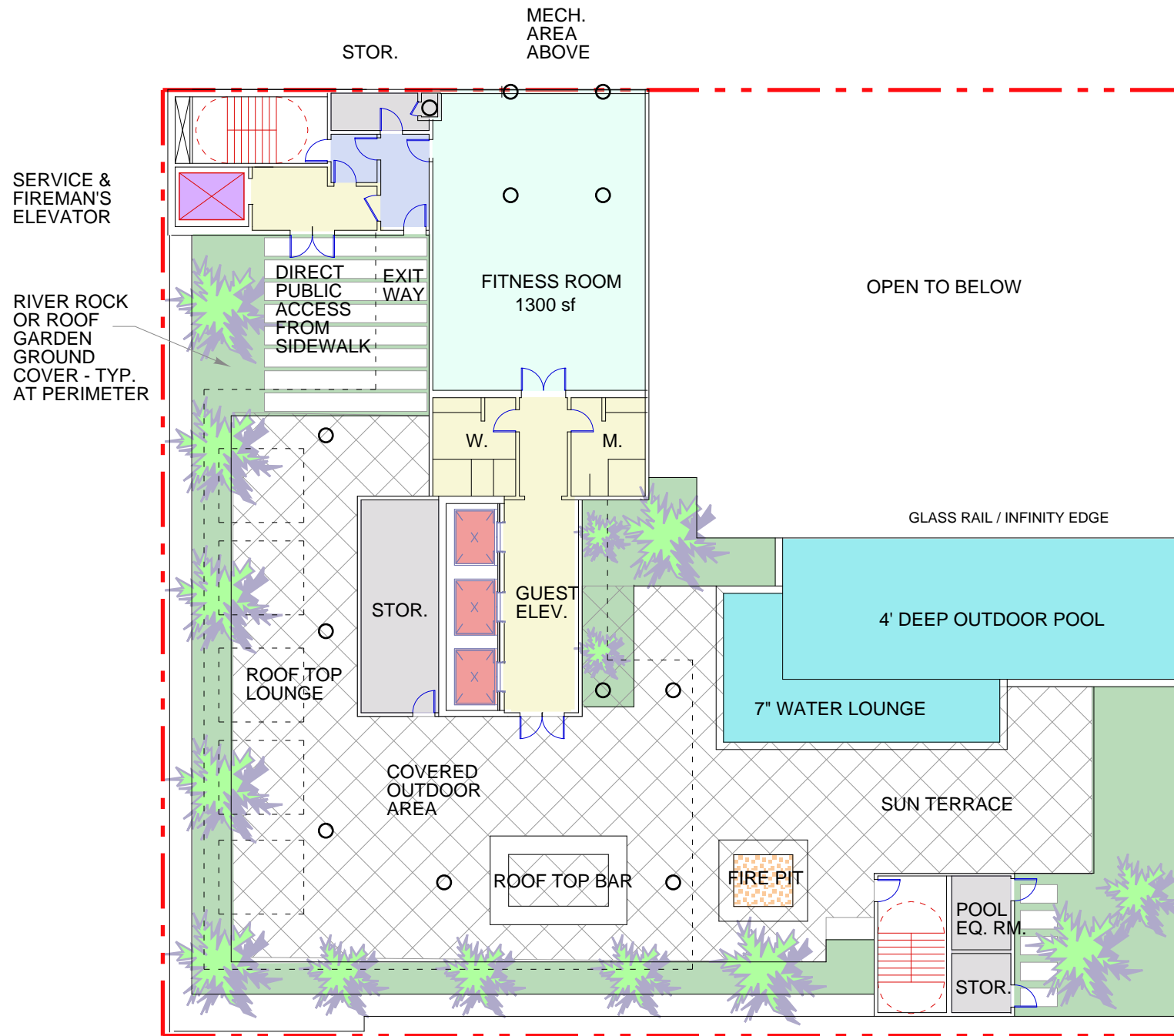
05 OCTOBER 2012



Proposed HOTEL in downtown AUSTIN, TX. East 5th Street / San Jacinto Street







NOTE: CALCULATIONS TO BE VERIFIED  
W/ THE CITY OF AUSTIN

OCCUPANT LOAD SUMMARY BASED ON 2009 IBC:

TERRACE AREA (CROSS HATCHED)

4250 SF @ 15 SF / PERSON = 284

POOL AREAS

1400 SF @ 50 SF / PERSON = 28

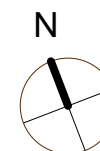
FITNESS ROOM

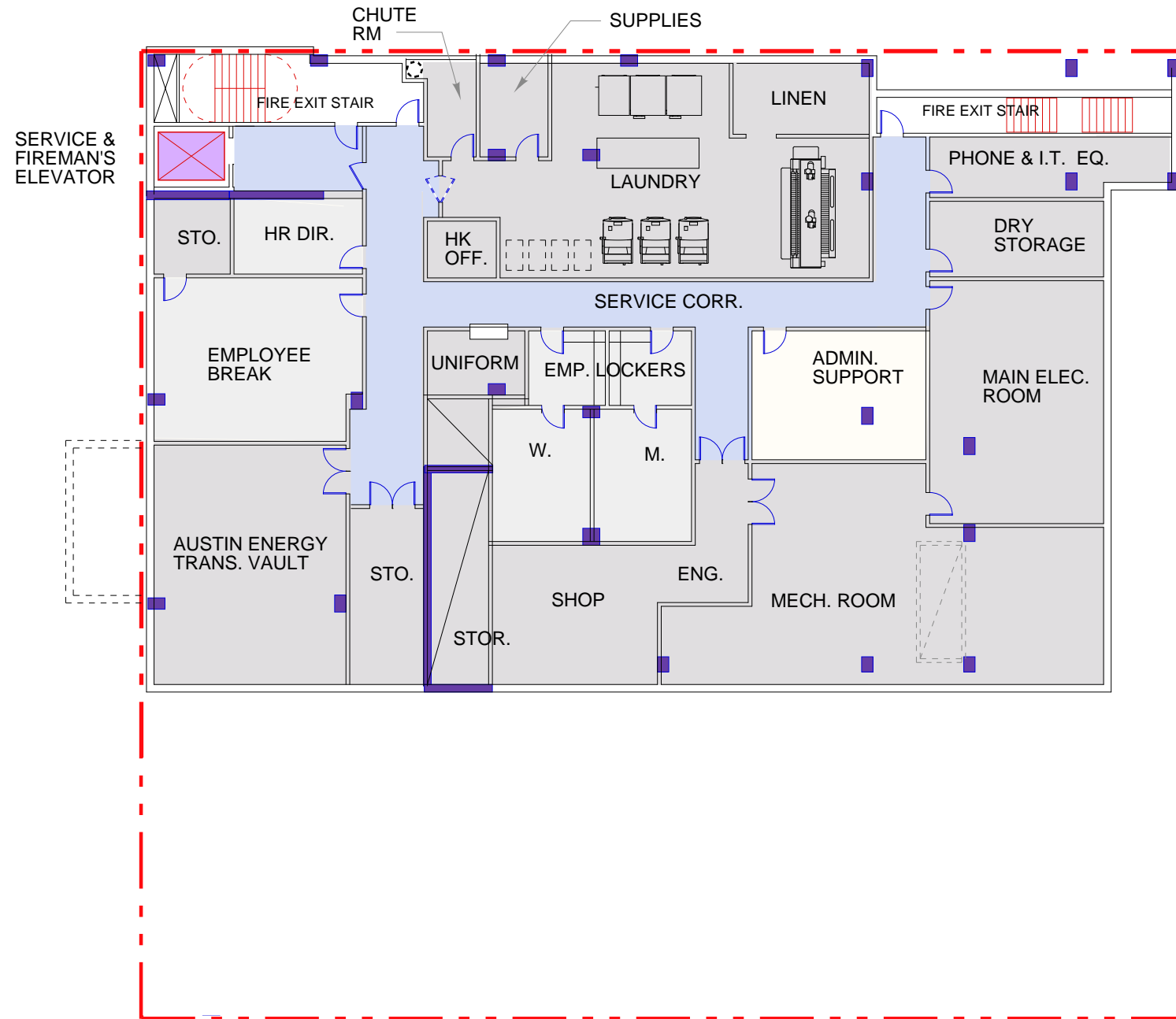
1300 SF @ 50 SF / PERSON = 26

338 TOAL OCCUPANTS

MAXIMUM PEOPLE FOR  
ROOF TERRACE LEVEL  
W/ EXITS & STAIR WIDTHS  
AS SHOWN = 340.

ROOF LEVEL





BASEMENT  
11' FL. TO FL.

