

CIVIL SERVICE COMMISSION PRESENTATION OF PROPOSED RULE REVISIONS

November 20, 2012

WHY WE ARE HERE

- ❖ In 2011, the Texas Legislature added Subchapter K to the Local Government Code Chapter 143 (Municipal Civil Service for Firefighters and Police Officers).
- ❖ Subchapter K provides:
 - ✓ A covered municipality may hold an election voting for or against: “Adoption of the emergency medical services personnel civil service law.”
 - ✓ If a majority of the votes favor adoption, each provision of Chapter 143 applies to covered emergency medical services personnel *“to the extent [Chapter 143] can be made applicable...”*
- ❖ On November 6, 2012, Austin voters favored adoption of Chapter 143 civil service for EMS personnel (Prop. 11).

WHY WE ARE HERE

- ❖ With the passage of Proposition 11, the existing City of Austin Fire Fighters' and Police Officers' Civil Service Commission also becomes the commission for EMS civil service, and will be renamed - -

The City of Austin Fire Fighters', Police Officers' and EMS Personnel Civil Service Commission

WHY WE ARE HERE

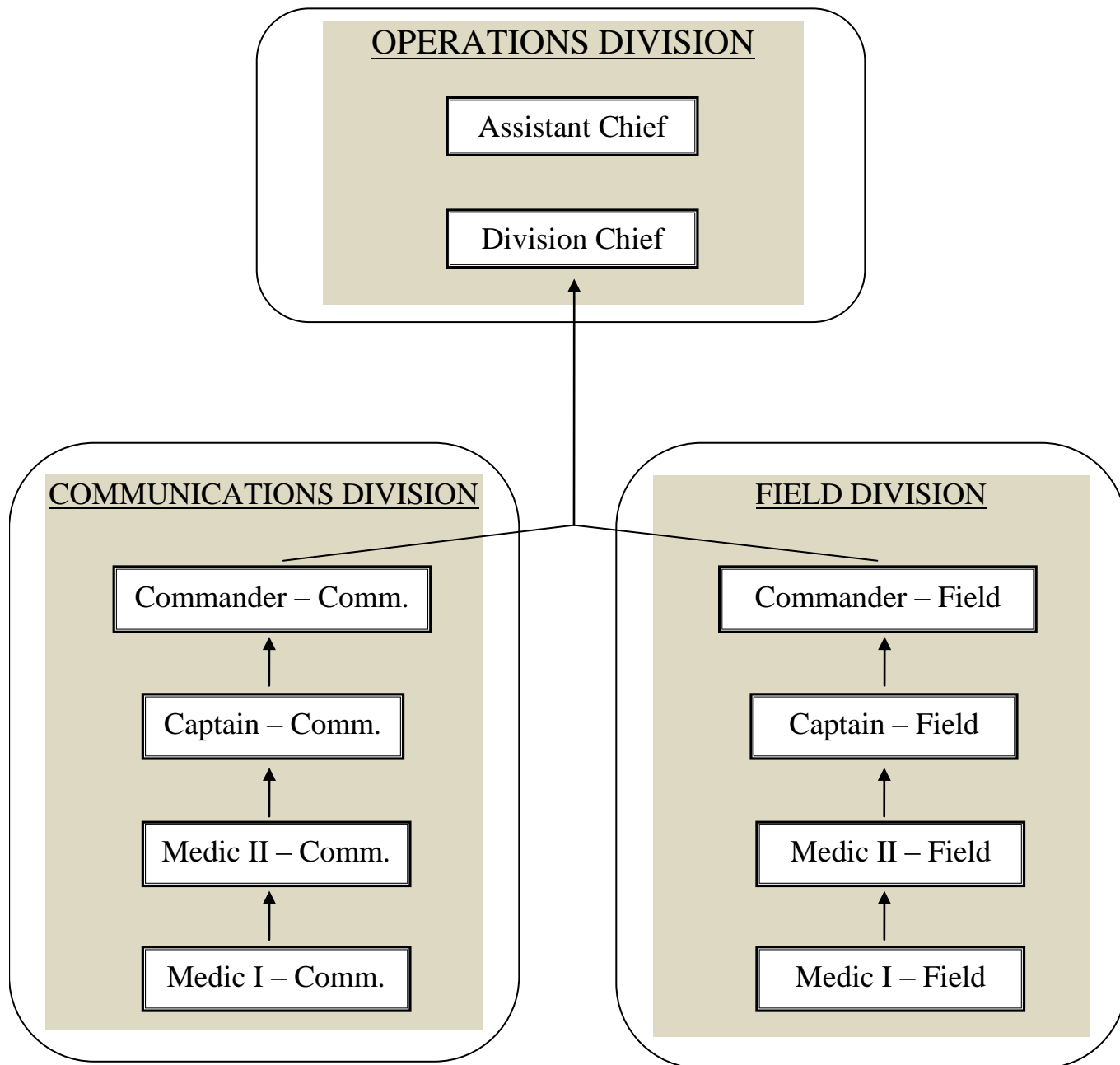
- ❖ The purpose of today's meeting:
 - ✓ Acquaint the Commission with who is now covered by EMS civil service.
 - ✓ Briefly introduce ATCEMS.
 - ✓ Present for consideration and possible action:
 - New rules for the administration of EMS civil service
 - Other rule revisions

WHO IS A COVERED EMPLOYEE

- ❖ Subchapter K applies to “emergency medical services personnel” employed in a municipal department other than the fire department.
 - ✓ Austin-Travis County EMS Department
- ❖ “Emergency medical services personnel” has the same meaning assigned by Section 773.003 of the Health and Safety Code.
 - ✓ Emergency care attendant;
 - ✓ Emergency medical technicians;
 - ✓ Emergency medical technicians--intermediate;
 - ✓ Emergency medical technicians--paramedic; or
 - ✓ Licensed paramedic.

THE ATCEMS DEPARTMENT

- ❖ The Chief of ATCEMS is Ernesto Rodriguez.
- ❖ ATCEMS has an authorized force of 475 emergency medical services (civil service) personnel.
- ❖ ATCEMS staffing model is in transition:
 - ✓ Past Model – Each ambulance staffed by 2 Advanced Providers (Paramedic or Licensed Paramedic)
 - ✓ New Model – Each ambulance staffed by 1 Advanced Provider and 1 Basic Provider (Emergency Medical Technician – EMT)
- ❖ EMS civil service staffing/classification will differ from Police and Fire, but is not unprecedented.



PROPOSED EMS RULES

THREE CATEGORY OF RULES

- ❖ General rules for the administration of EMS civil service.
- ❖ Rules which clarify between a “Fire” or “Police” provision.
- ❖ Rules to address issues unique to EMS.

NEXT STEPS

- ❖ *The Commission may move and vote to approve rule changes today*
- ❖ *The Commission may request additional work sessions to revise or update rule changes and approve changes at a later date*
- ❖ *The Commission may study the rule change proposal and discuss further at a later date*

**There is a Special Called Meeting scheduled 12/10/12 if needed*