

Exhibit A

RESOLUTION NO. _____

WHEREAS, the land management plan for the City's Water Quality Protection Lands was adopted in 2001 by City Council Resolution No. 011212-80; and

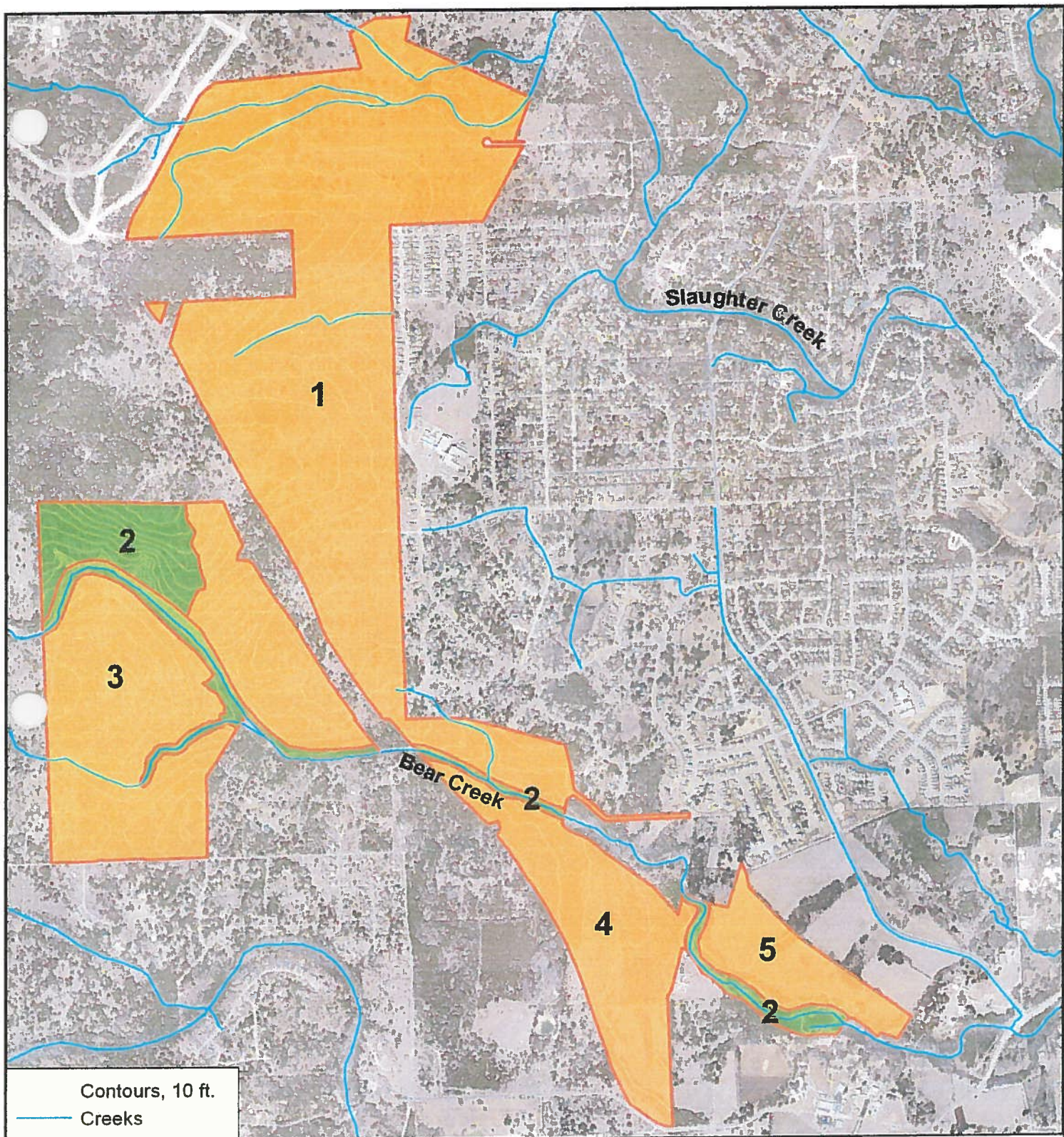
WHEREAS, since 2001 the City's Water Quality Protection Lands have increased substantially in size and the science of land management has progressed; **NOW THEREFORE**,

BE IT RESOLVED BY THE CITY COUNCIL OF THE CITY OF AUSTIN:


The City Council repeals Resolution No. 011213-80 and adopts a new land management plan for the Water Quality Protection Lands, attached and incorporated as **EXHIBIT A**.

ADOPTED: _____

ATTEST: _____
Shirley A. Gentry
City Clerk



Treatment Regimes

- | | |
|--|--|
|  High frequency fire |  Woodland health/riparian |
|  Low frequency fire | |
|  Moderate frequency fire | |

0 0.125 0.25 0.5 Miles



2010

**Recommended Land Management
for the
Water Quality Protection Lands
Austin, Texas**

**Book Two
Figures**

List of Figures

Figure	Page
1.1-1 Watershed Location Map	2
1.1-2 Edwards Aquifer Recharge Zone, Barton Springs Segment	3
2.1-1 Geology within the Recharge Zone, Barton Springs Segment	4
2.3-1 Bull Creek Soil Types	5
2.3-2 Upper Barton Creek Soil Types	6
2.3-3 Lower Barton Creek Soil Types	7
2.3-4 Slaughter Creek Soil Types	8
2.3-5 Bear Creek Soil Types	9
2.3-6 Little Bear Creek Soil Types, north	10
2.3-7 Little Bear Creek Soil Types, south	11
2.3-8 Onion Creek Soil Types	12
2.3-9 Shudde Fath Soil Types	13
2.3-10 Brodie Wild Soil Types	14
2.3-11 Bull Creek Ecological Sites	15
2.3-12 Upper Barton Creek Ecological Sites	16
2.3-13 Lower Barton Creek Ecological Sites	17
2.3-14 Slaughter Creek Ecological Sites	18
2.3-15 Bear Creek Ecological Sites	19
2.3-16 Bear Creek - Lancaster/Bliss Spillar Tracts- Ecological Sites	20
2.3-17 Lower Bear Creek Ecological Sites, north	21
2.3-18 Little Bear Creek Ecological Sites, south	22
2.3-19 Onion Creek Ecological Sites	23
2.3-20 Shudde Fath Ecological Sites	24
2.3-21 Brodie Wild Ecological Sites	25
2.3-22 Upper Barton Creek GCW Surveys	26
2.3-23 Lower Barton Creek GCW Surveys	27
2.3-24 Slaughter Creek GCW Surveys	28
2.3-25 Bear Creek GCW Surveys	29
2.3-26 Little Bear Creek GCW & BCV Surveys	30
2.3-27 Onion Creek GCW Surveys	31
2.3-28 Shudde Fath GCW Surveys	32
3.1-1 Common Historical Plant Communities and Transitional Pathways	33

Figure		Page
5.1-1	Potential GCW Habitat Overview	34
5.1-2	Overview of Vegetative Goals	35
5.1-3	Overview of General Treatment Regimes	36
5.2-1	Bull Creek Treatment Units	37
5.2-2	Upper Barton Creek Treatment Units	38
5.2-3	Lower Barton Creek Treatment Units	39
5.2-4	Slaughter Creek Treatment Units	40
5.2-5	Bear Creek Treatment Units	41
5.2-6	Little Bear Creek Treatment Units	42
5.2-7	Onion Creek Treatment Units	43
5.2-8	Shudde Fath Treatment Unit	44
5.2-9	Brodie Wild Treatment Unit	45

Figure 1.1.1 Watershed Location Map

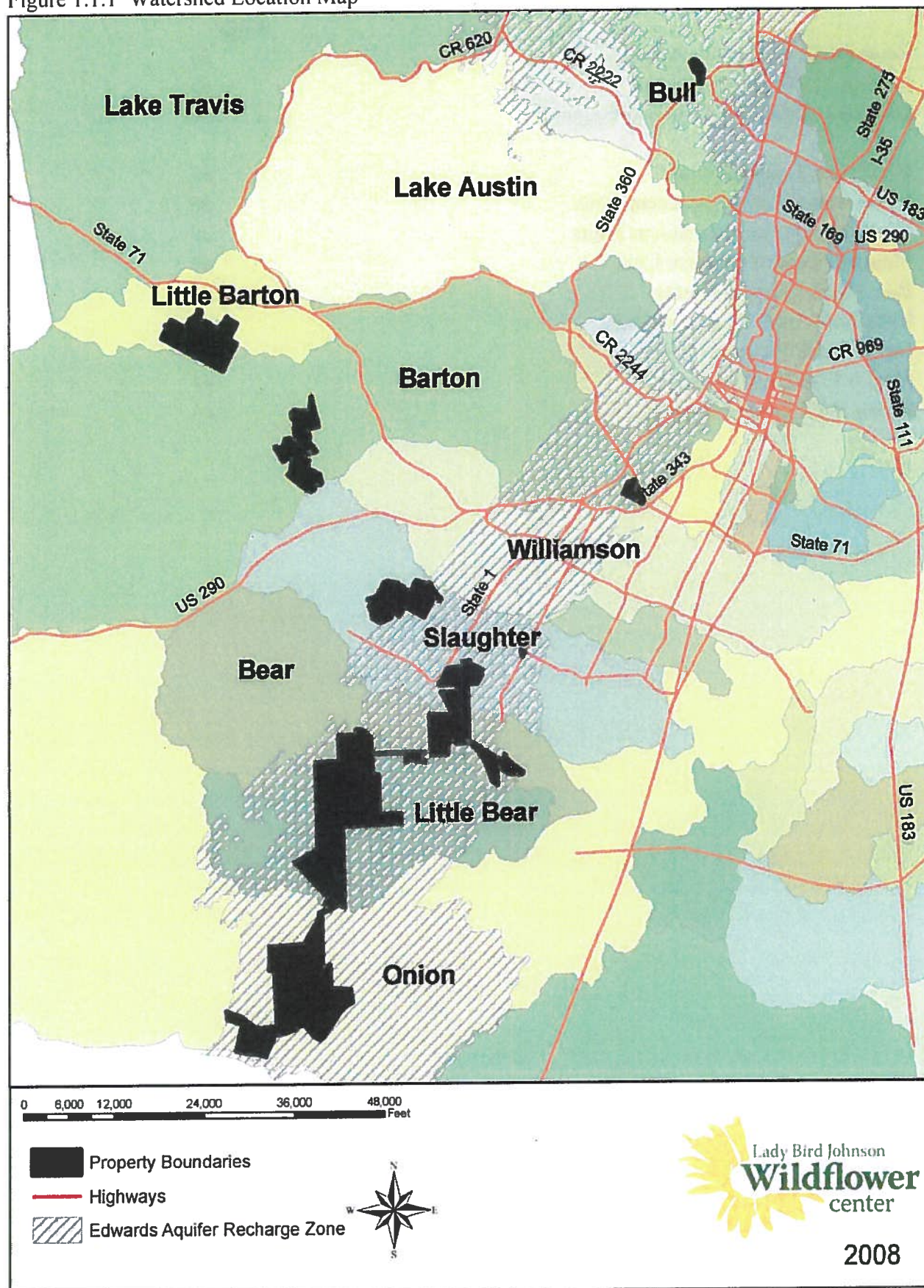


Figure 1.1-2 Edwards Aquifer Recharge Zone, Barton Springs Segment

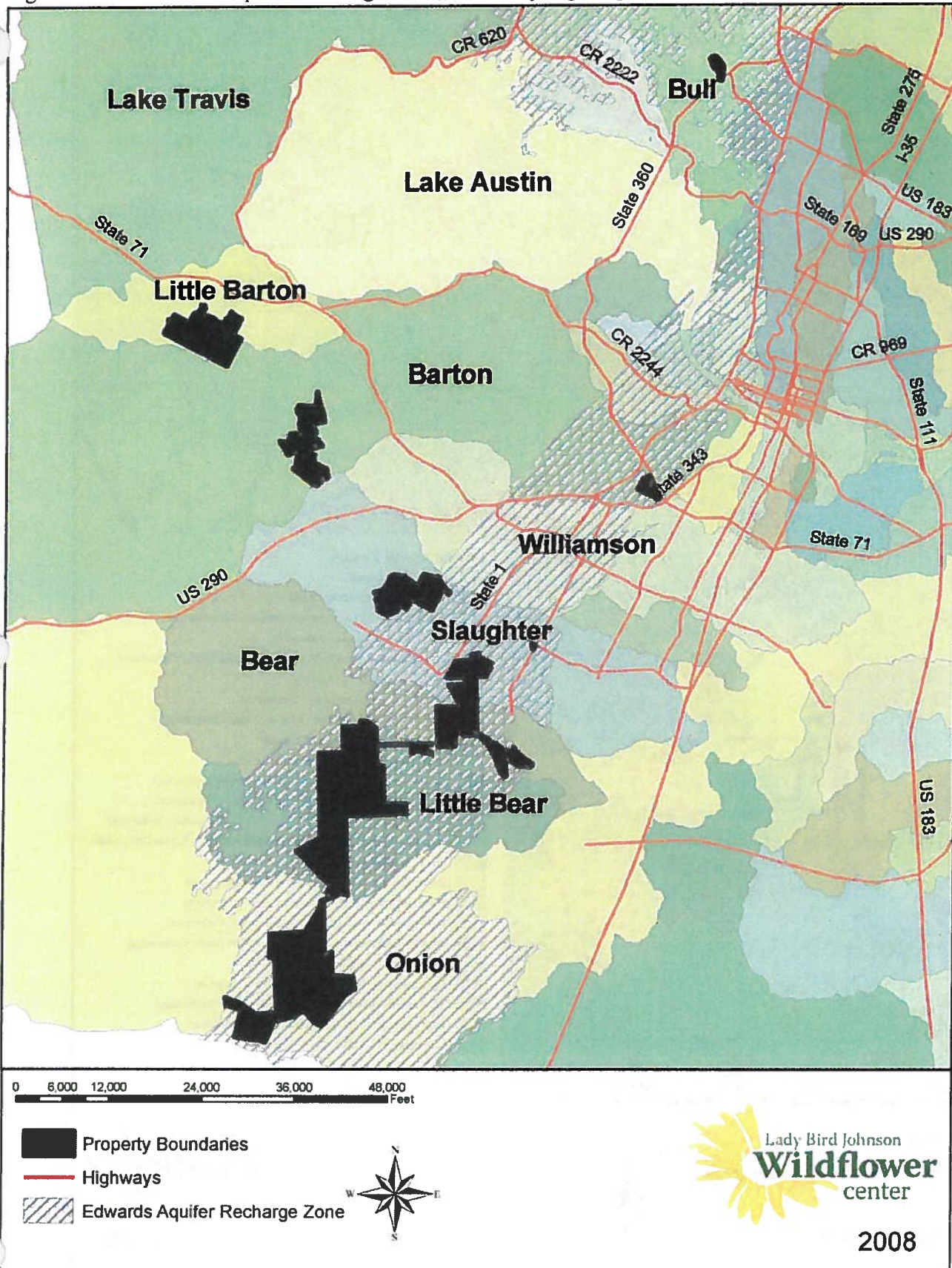


Figure 2.1-1 Geology

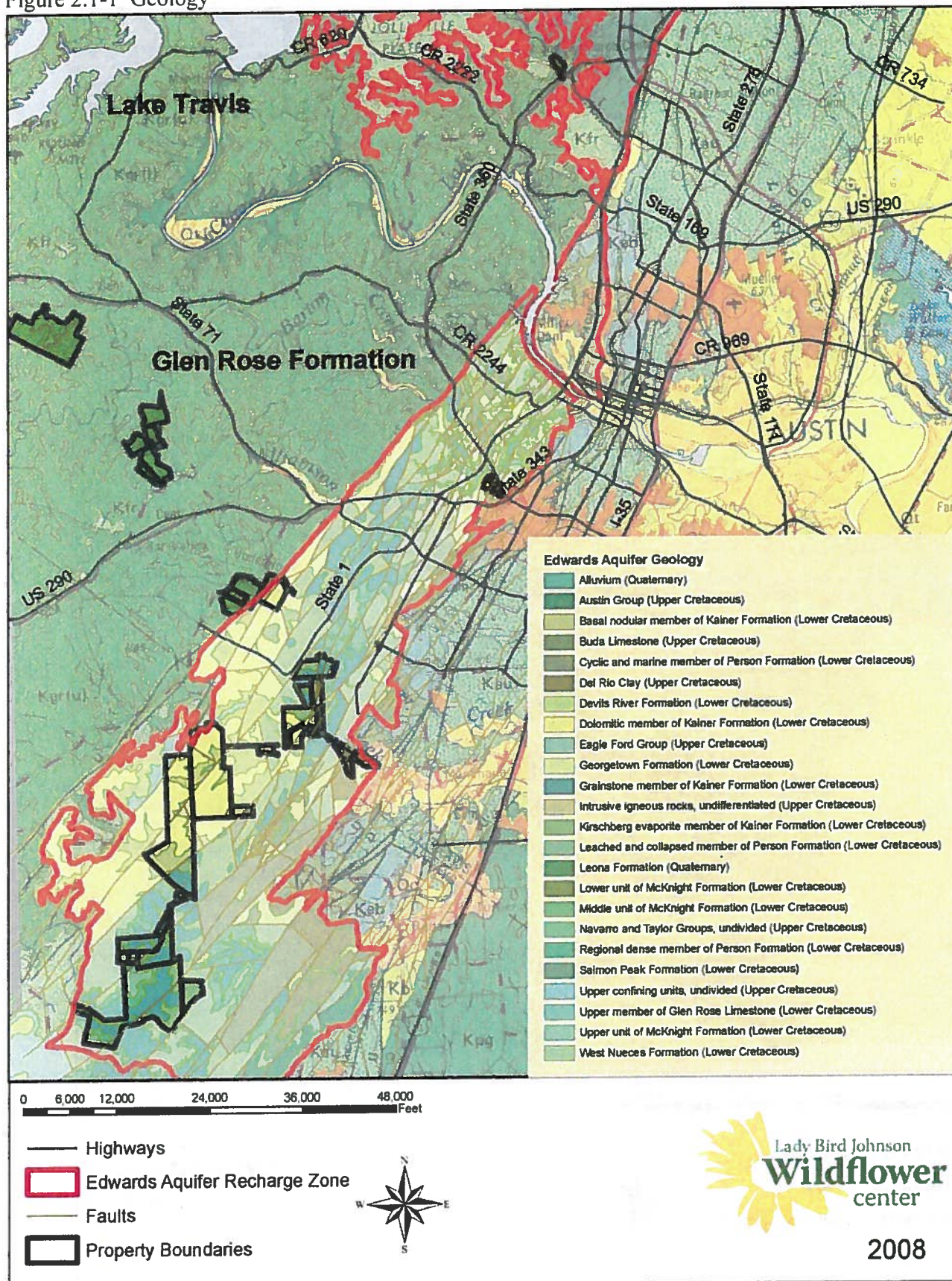


Figure 2.3-1 Bull Creek Soil Types

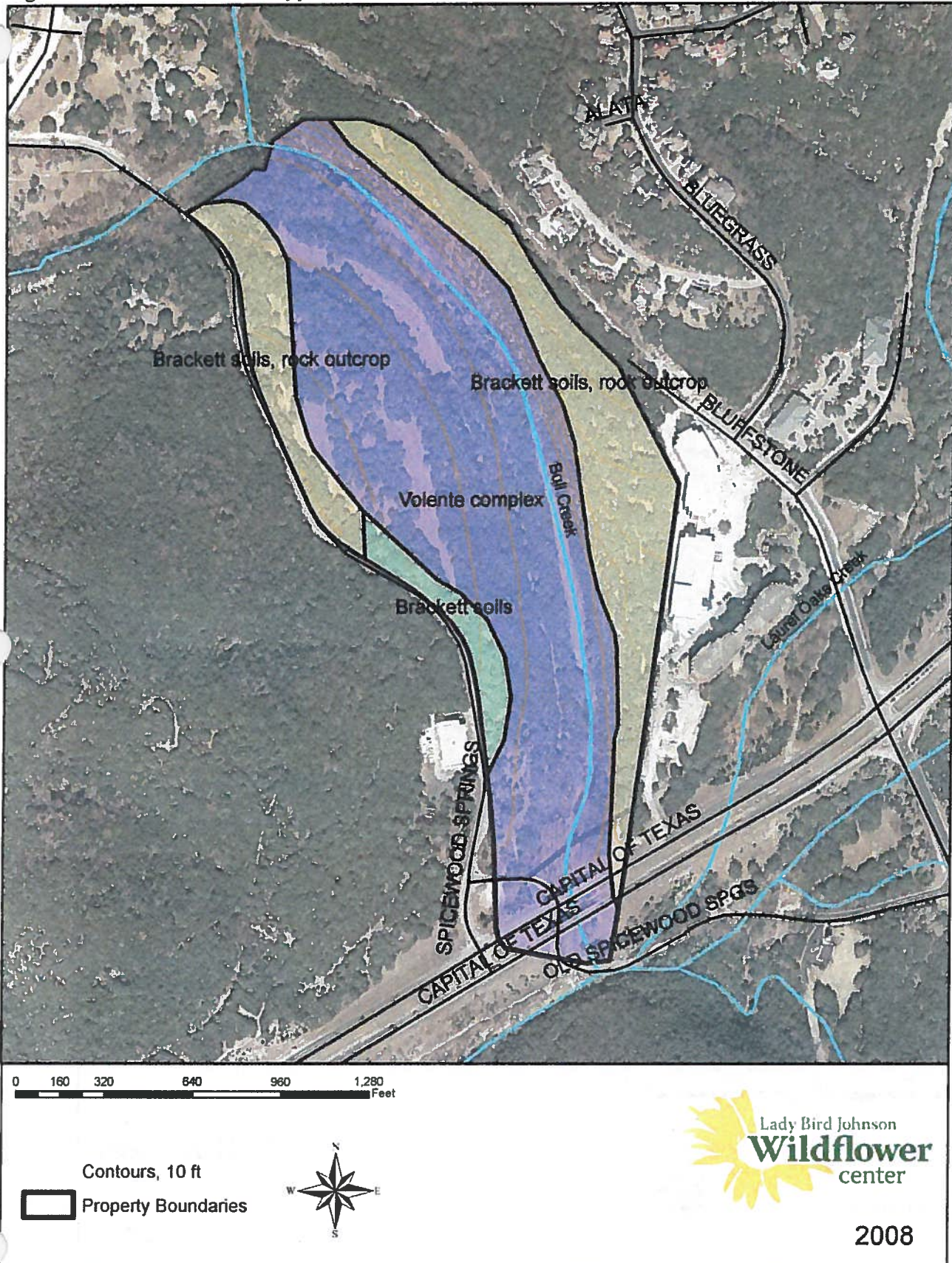


Figure 2.3-2 Upper Barton Creek Soil Types

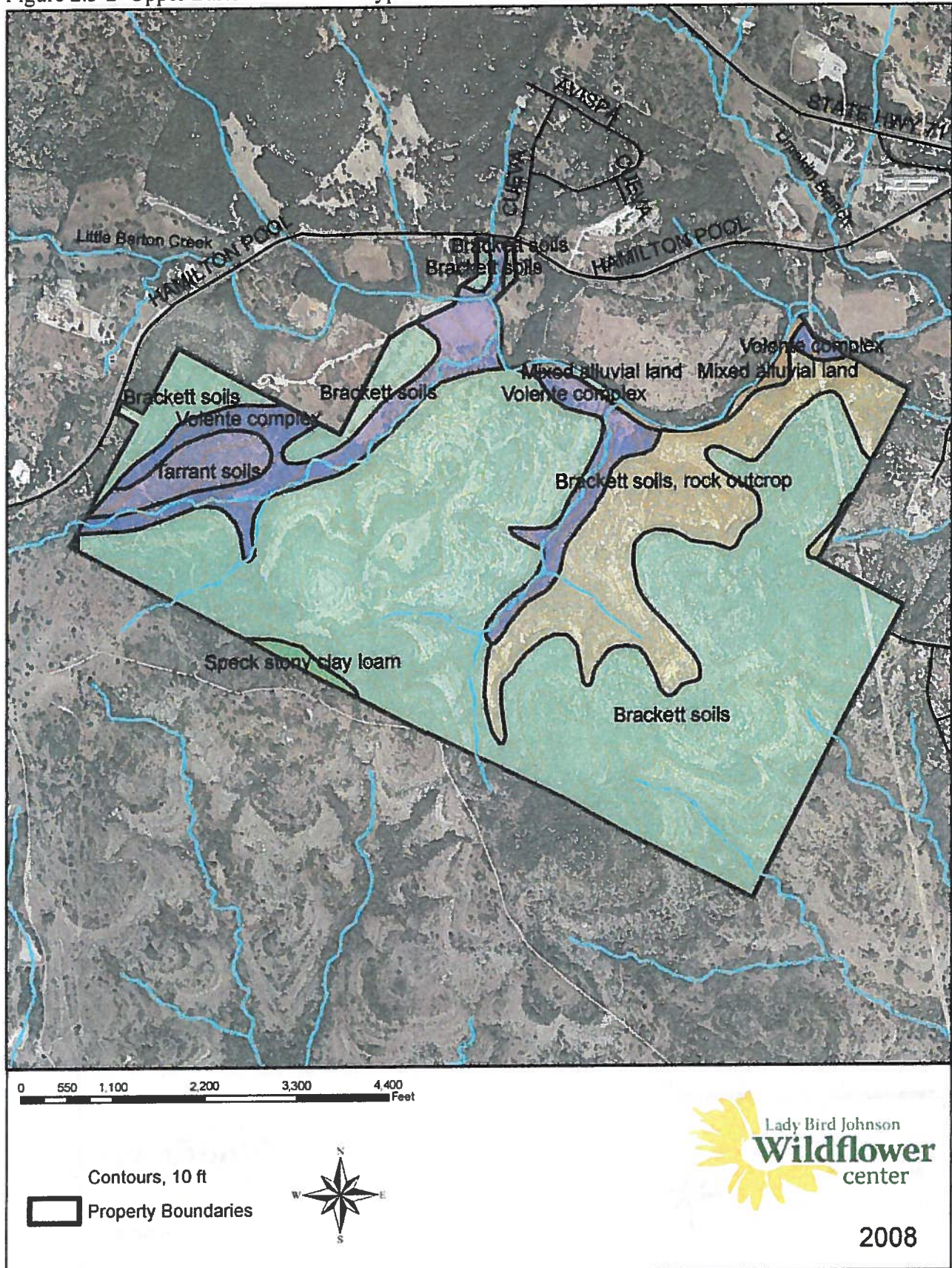


Figure 2.3-3 Lower Barton Creek Soil Types

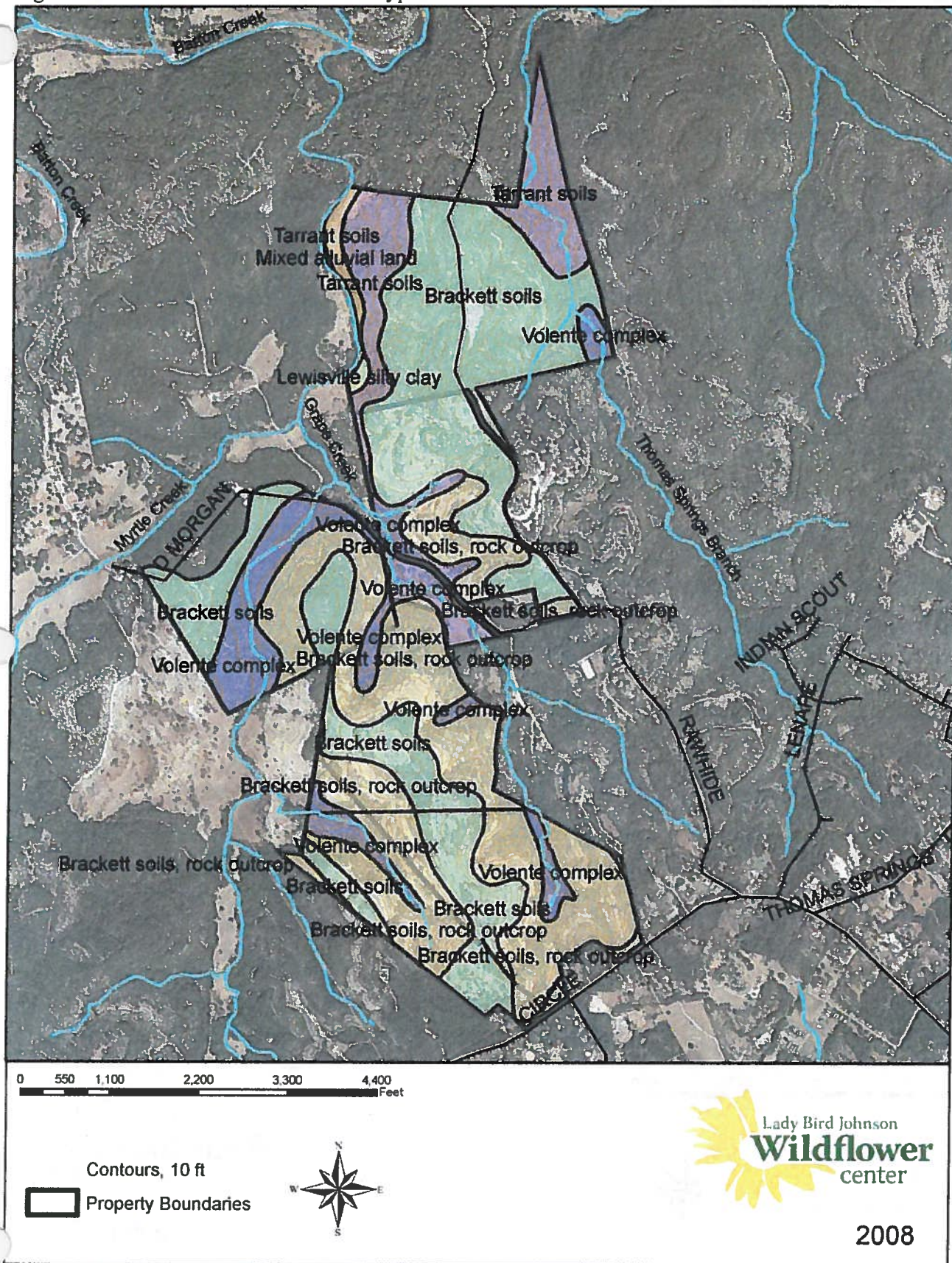


Figure 2.3-4 Slaughter Creek Soil Types

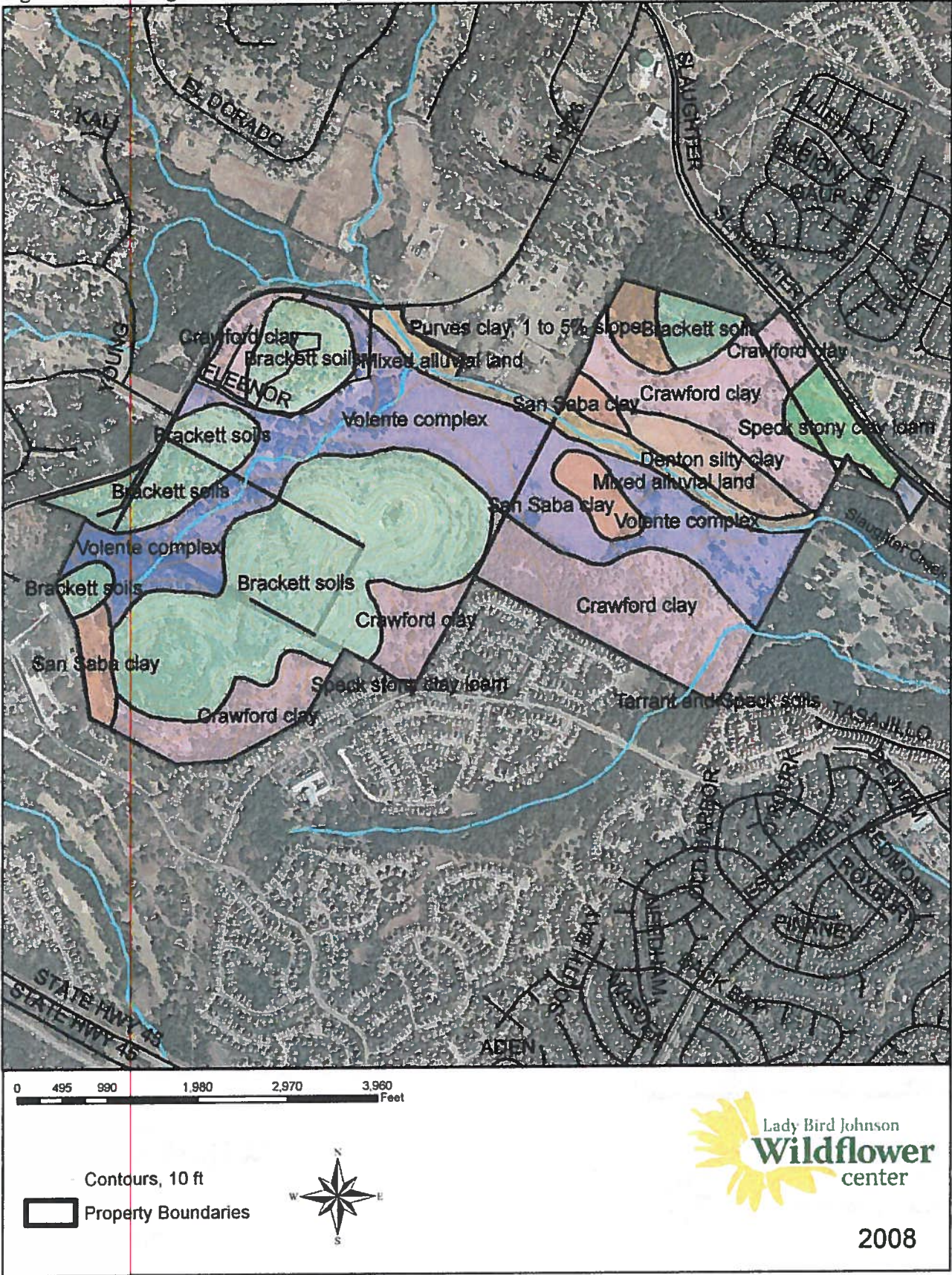


Figure 2.3-5 Bear Creek Soil Types

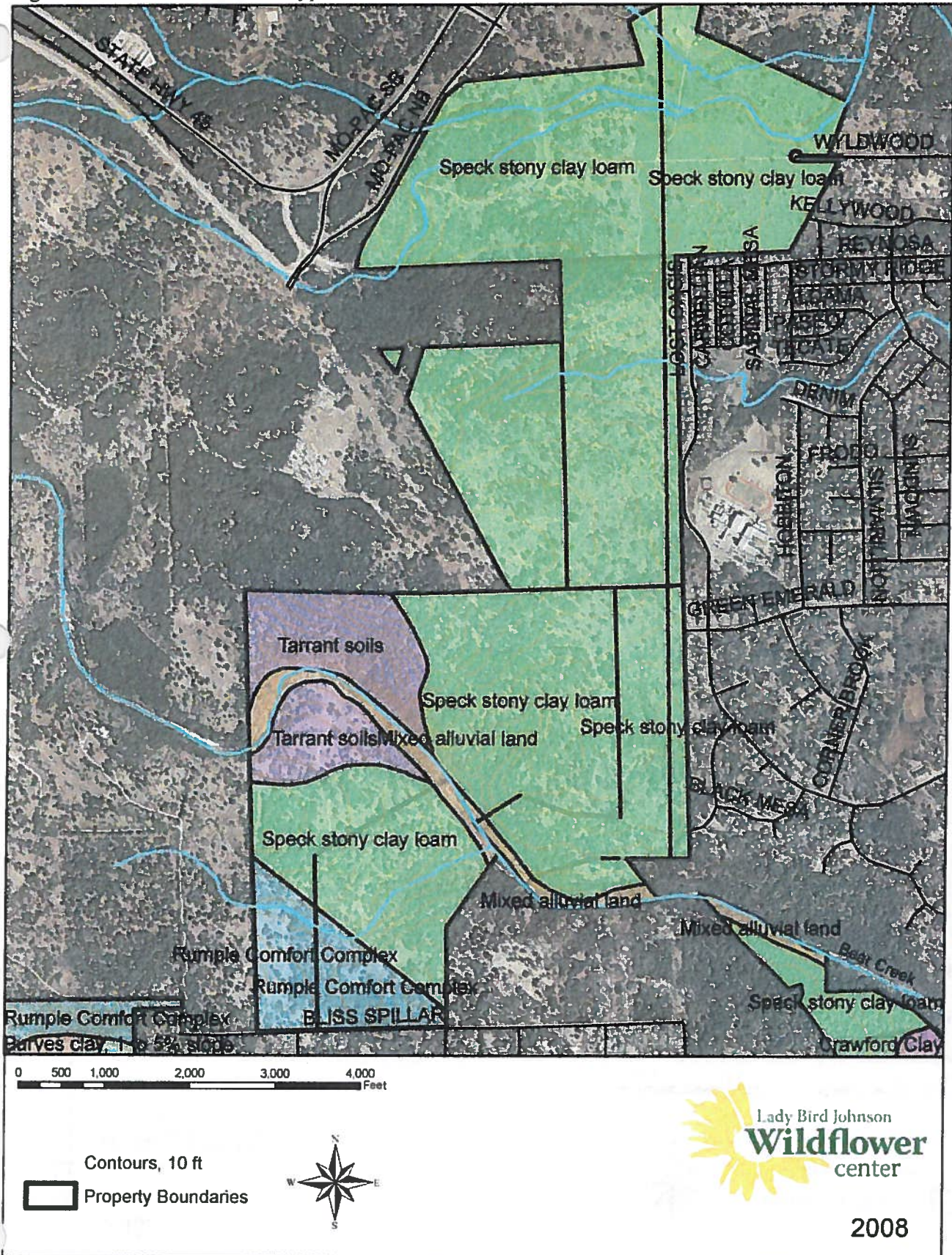


Figure 2.3-6 Little Bear Creek, north, Soil Types

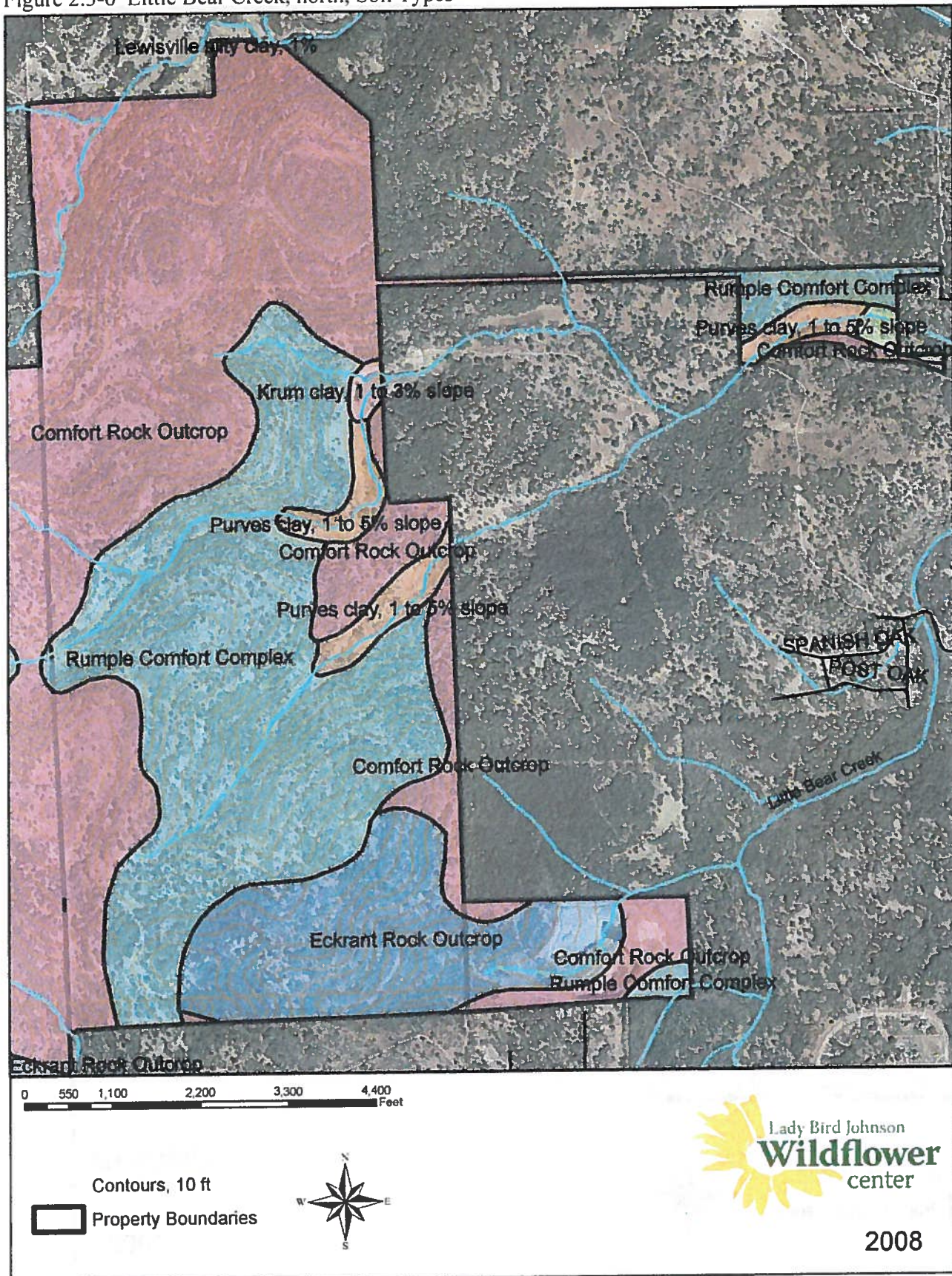


Figure 2.3-7 Little Bear Creek, south, Soil Types

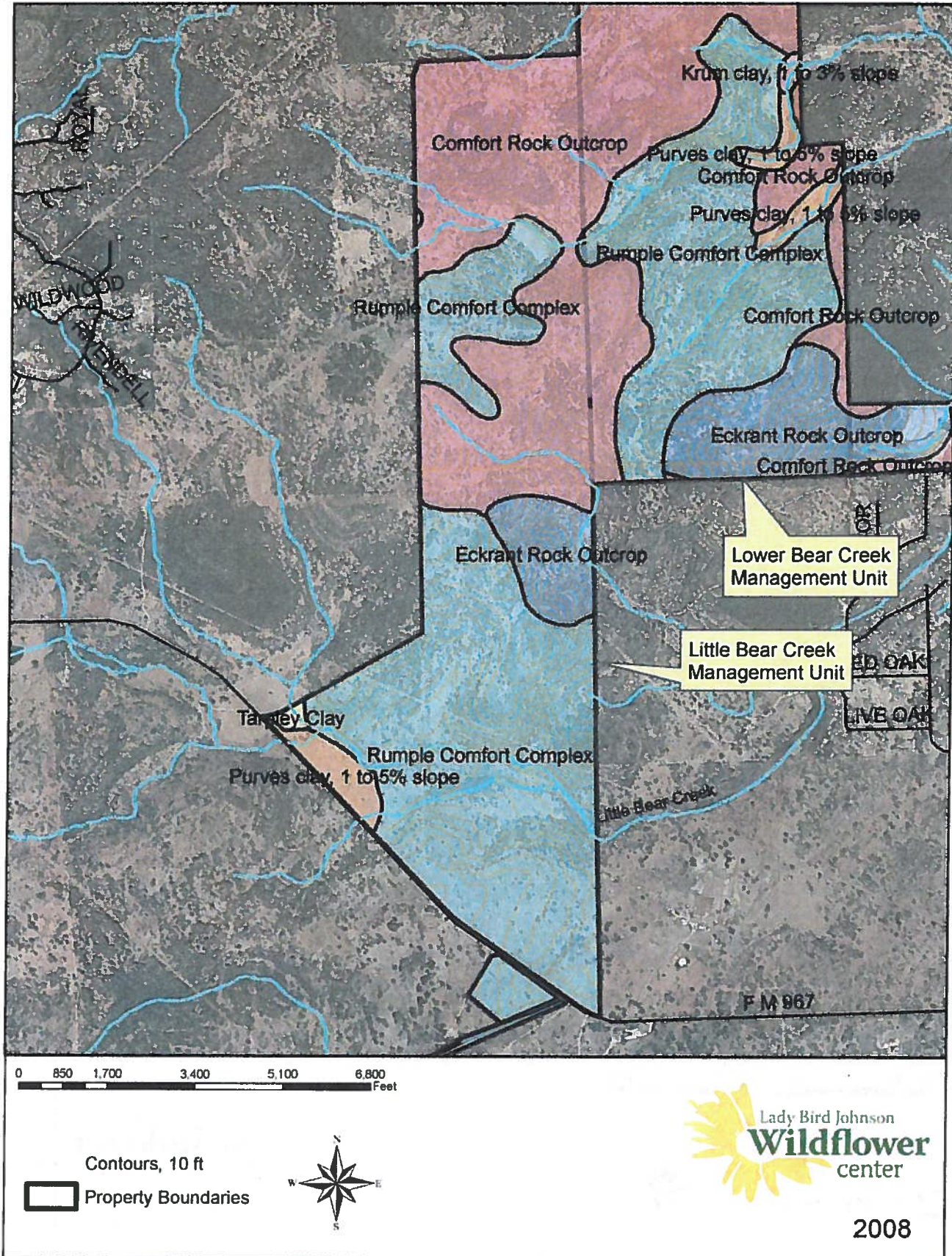


Figure 2.3-8 Onion Creek Soil Types

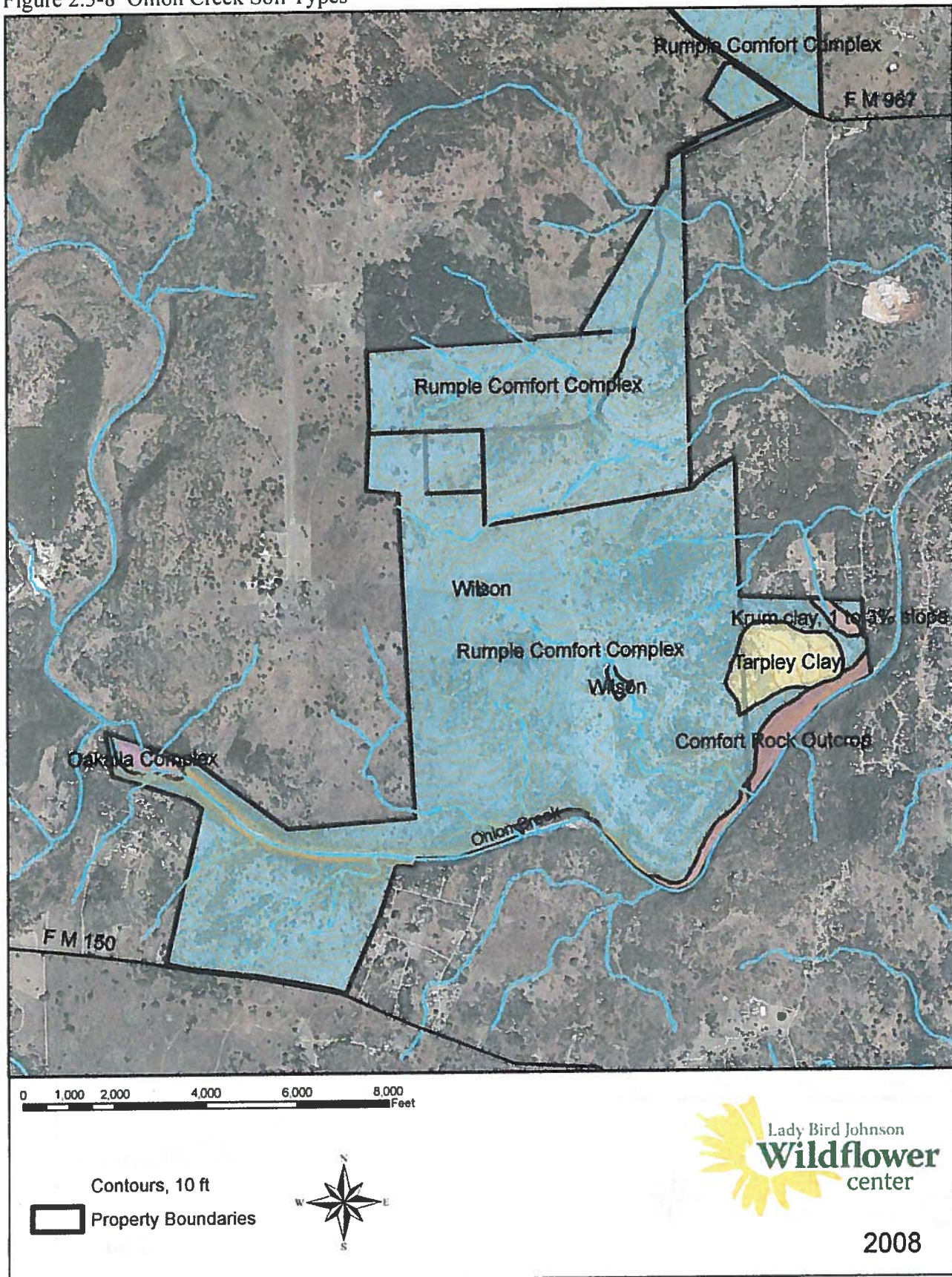


Figure 2.3-9 Shudde Fath Soil Types

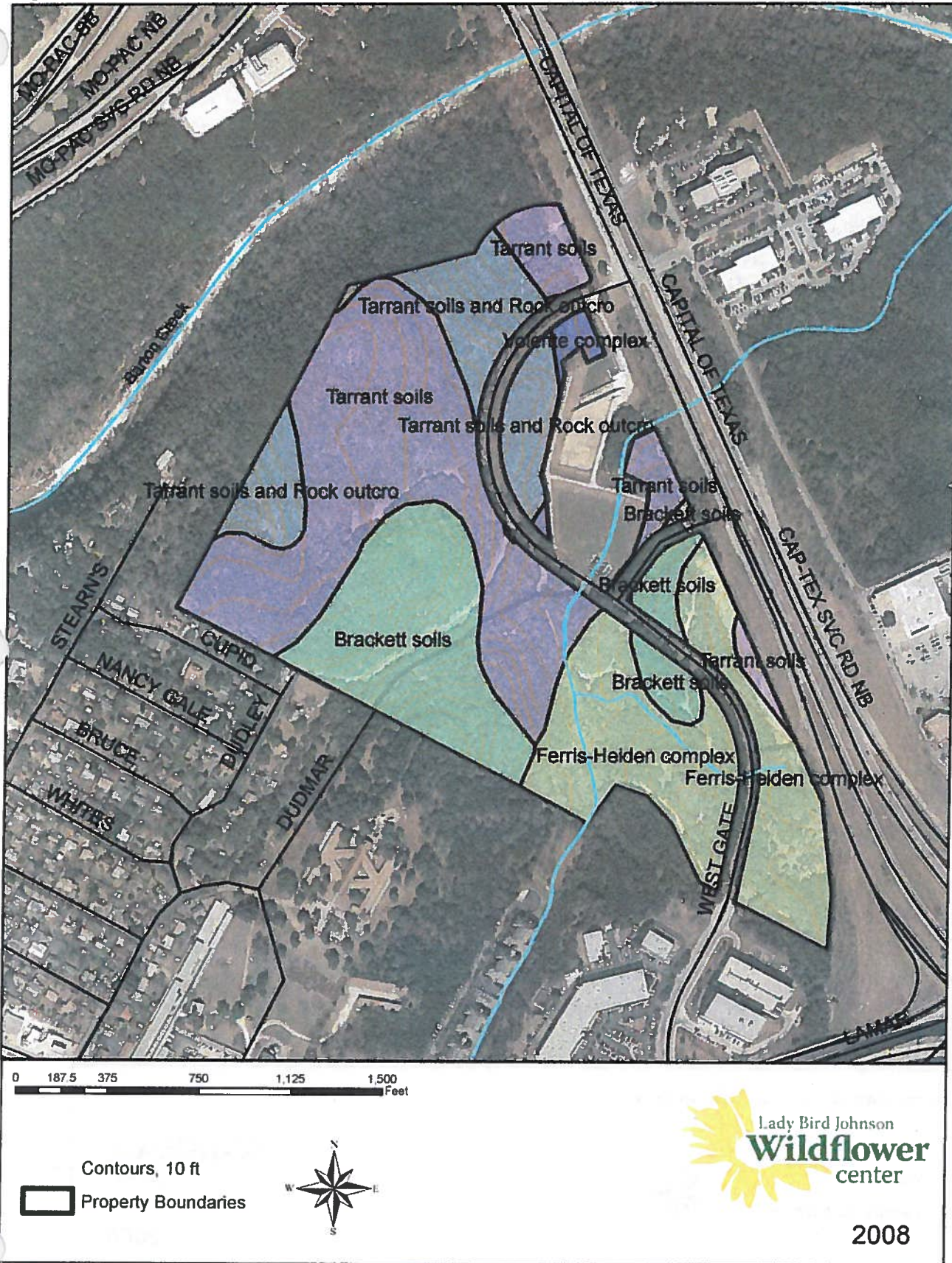


Figure 2.3-10 Brodie Wild Soil Types

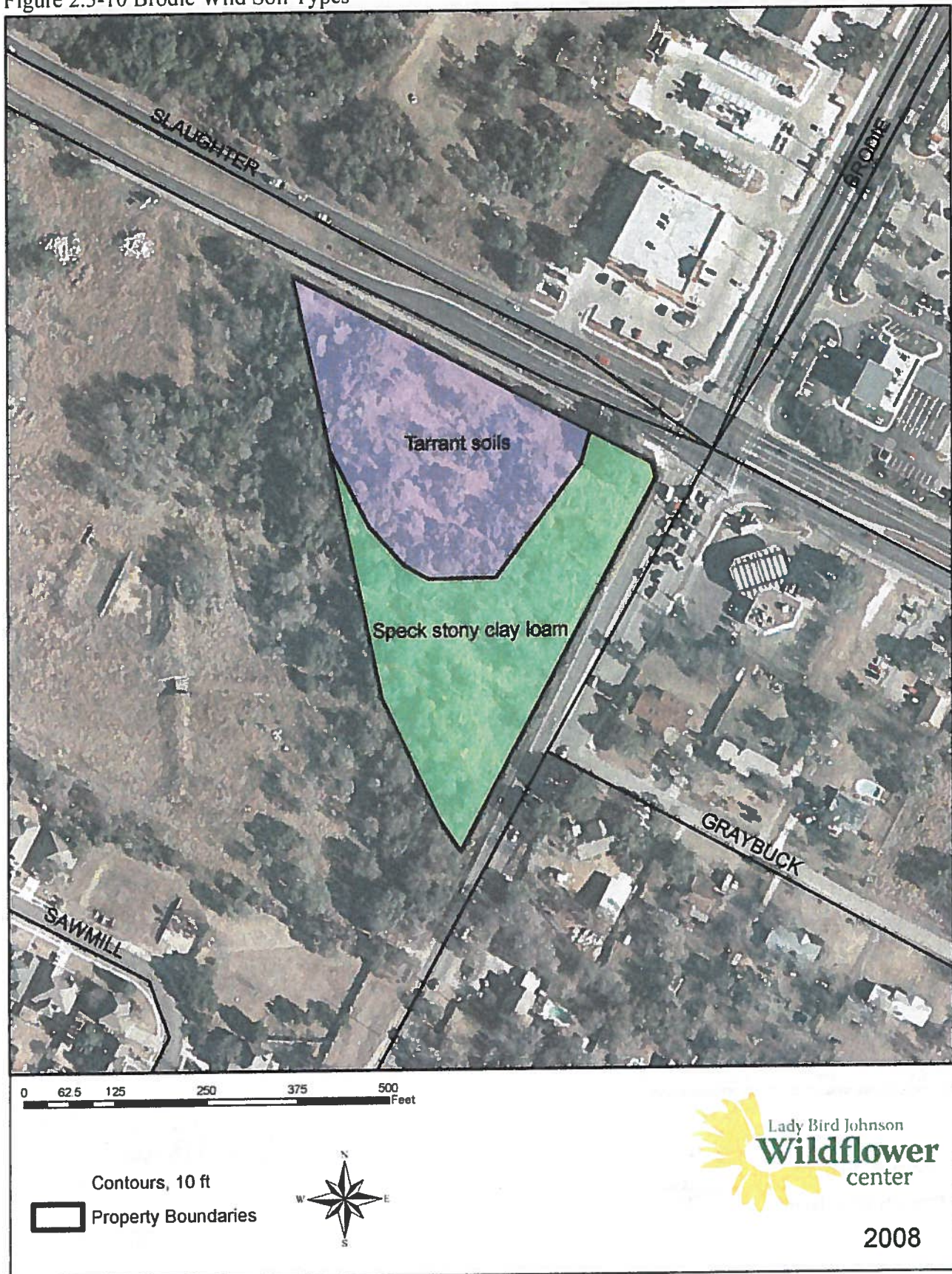


Figure 2.3-11 Bull Creek Ecological Sites

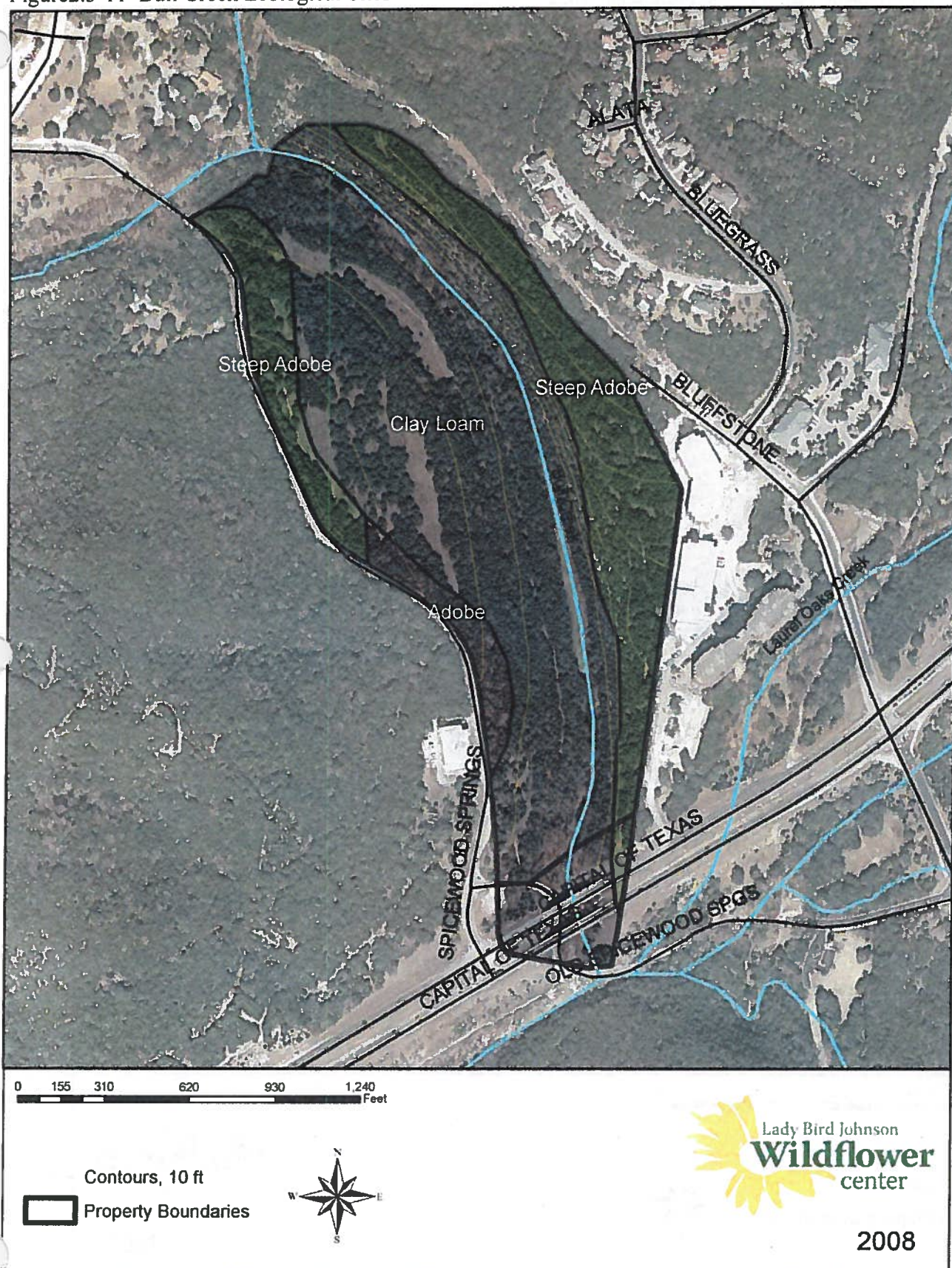


Figure 2.3-12 Upper Barton Creek Ecological Sites

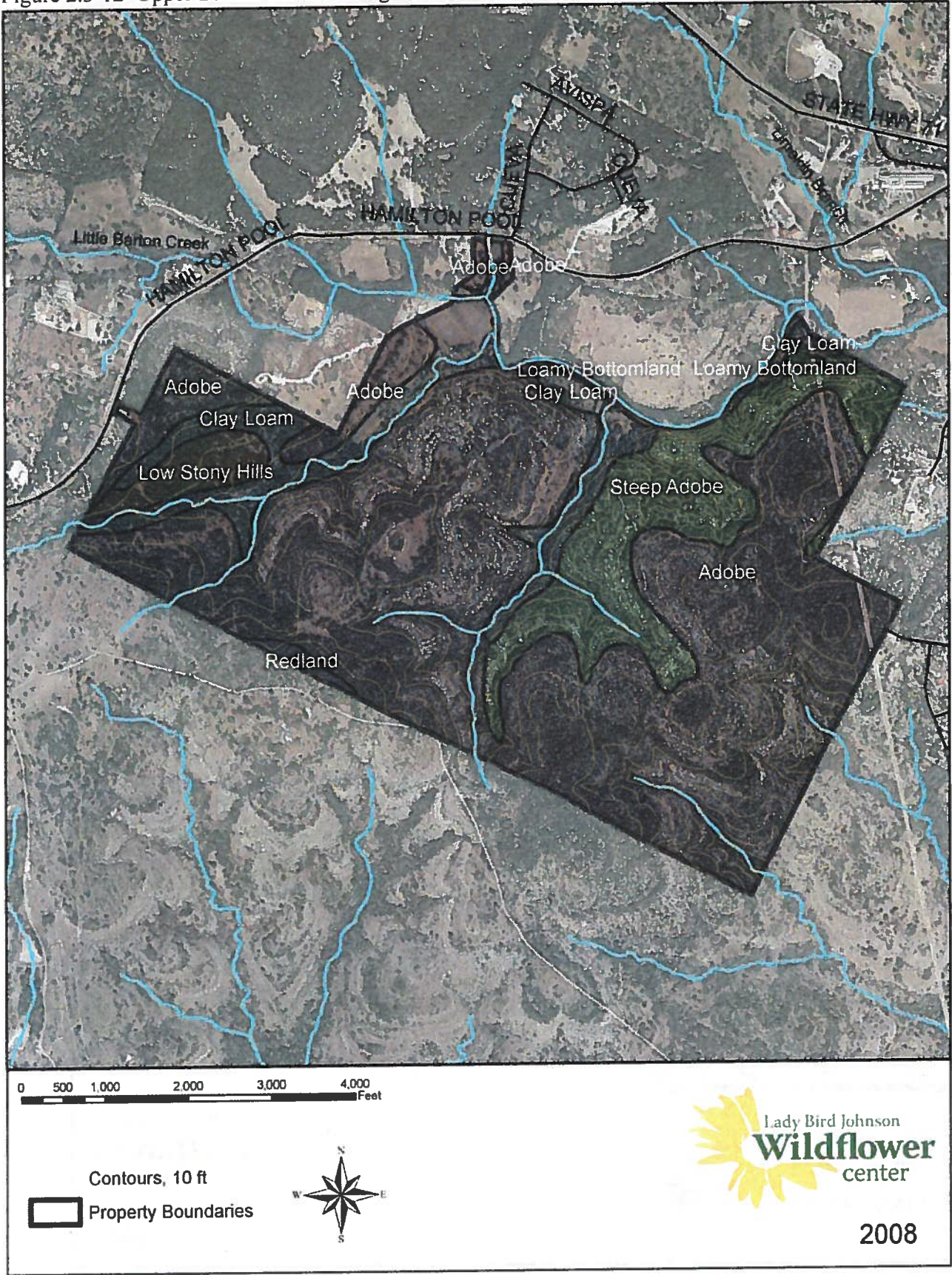


Figure 2.3-13 Lower Barton Creek Ecological Sites

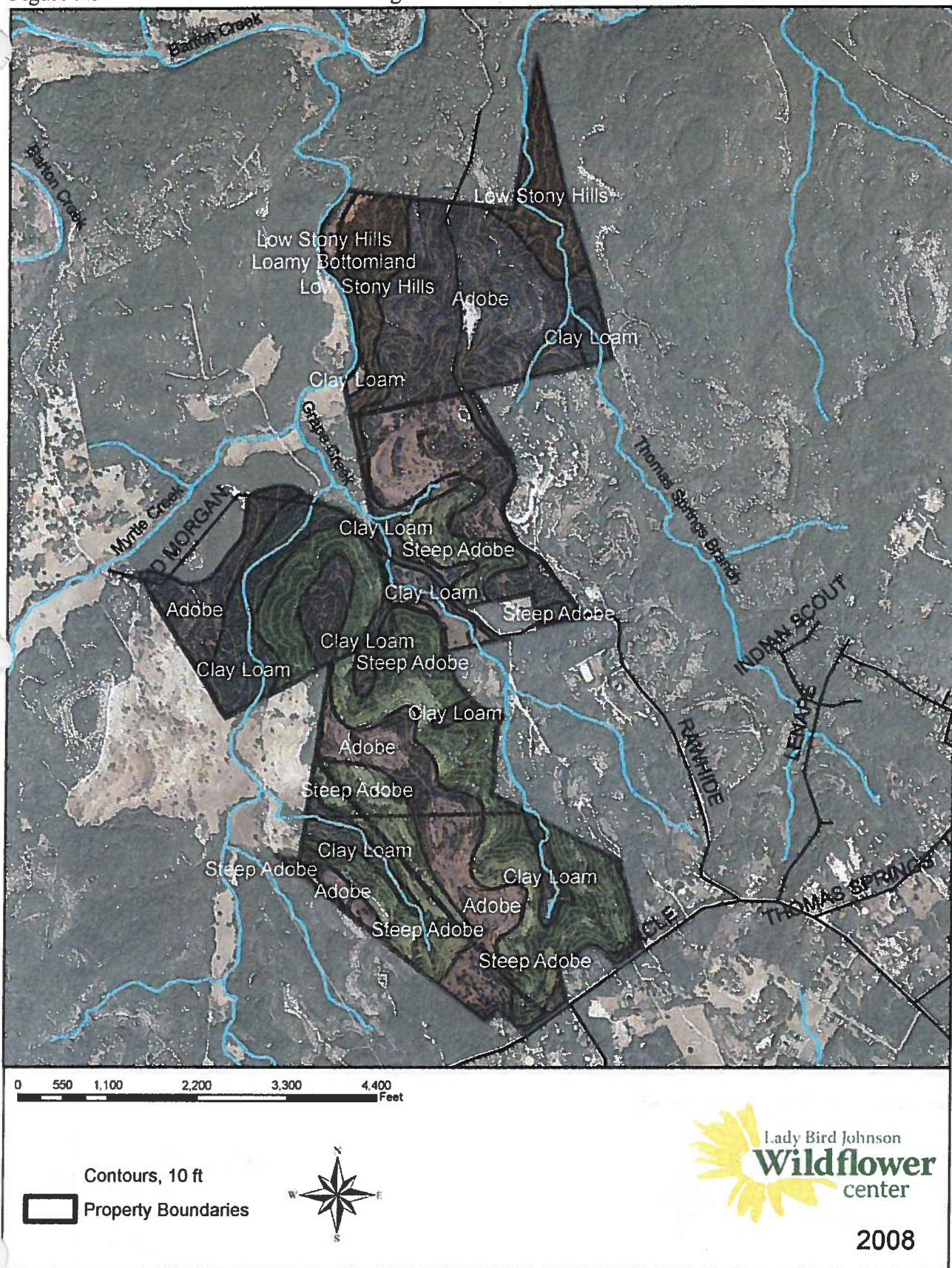


Figure 2.5.4. Slaughter Creek

0 500 1,000 2,000 3,000 4,000 Feet

Contours, 10 ft

Property Boundaries

Lady Bird Johnson
Wildflower
center

2008

This map illustrates the terrain and property boundaries of the Lady Bird Johnson Wildflower Center. Key features include:

- Topography:** Contours are shown at 10-foot intervals, with labels for 'Low Stony Hills' and 'Loamy Bottomland'.
- Soil Types:** Various soil classifications are marked, including 'Redland', 'Loamy Bottomland', 'Gravelly Redland', and 'Deep Redland'.
- Water Features:** 'Bear Creek' and 'Sage Creek' are depicted as blue lines winding through the landscape.
- Property Boundaries:** Solid black lines delineate individual property parcels.
- Infrastructure:** Roads such as 'STATE HWY 46', 'MOBILE SB', and 'MOBILE NB' are shown.
- Scale and Orientation:** A scale bar at the bottom measures distances from 0 to 4,400 feet. A north arrow is positioned in the lower-left corner.
- Map Title and Date:** The map is titled 'Lady Bird Johnson Wildflower Center' and dated '2008'.

Figure 2.3-16 Bear Creek – Lancaster/Bliss Spillar Tracts Ecological Sites

