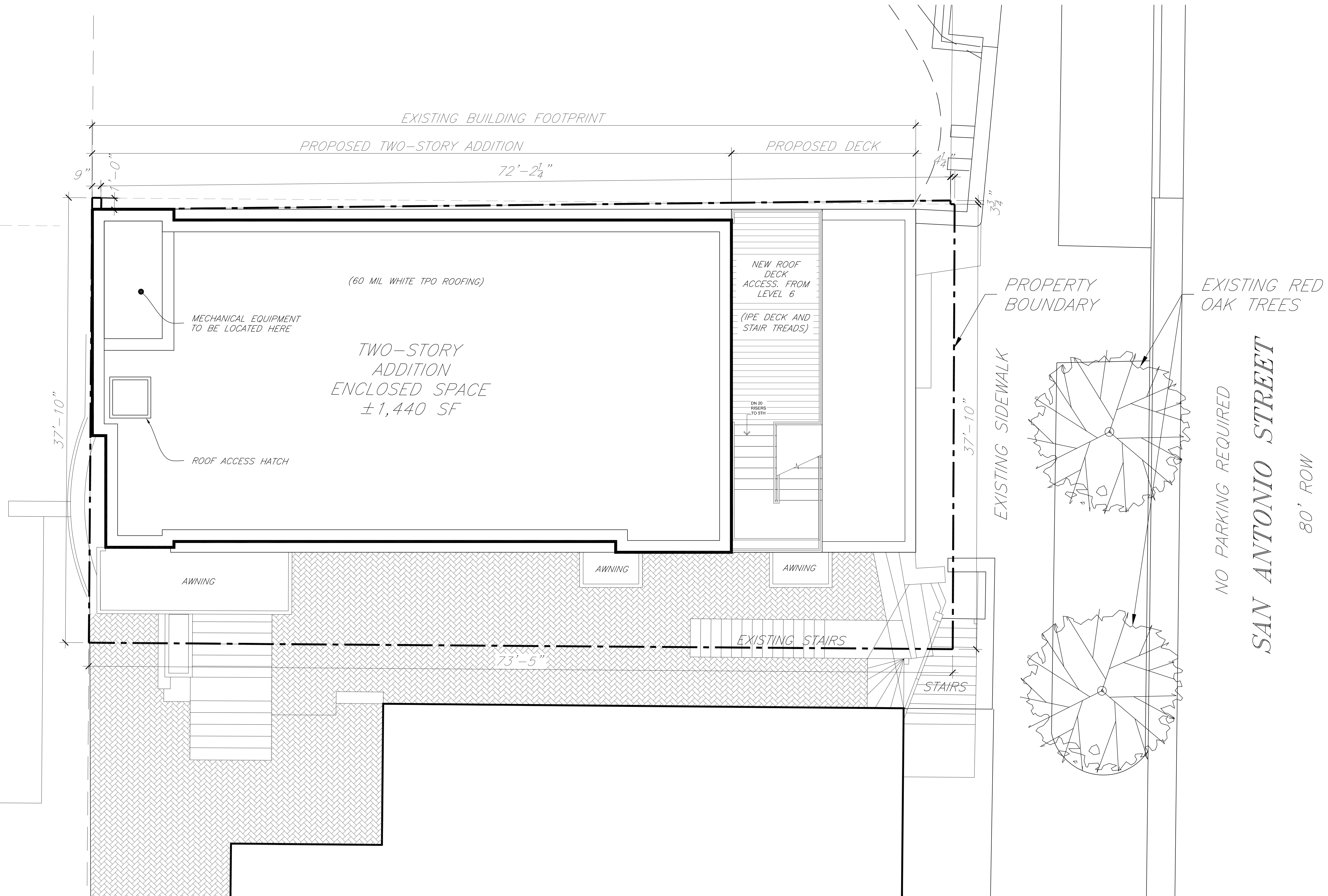


ABBREVIATIONS

% Percent	GALV Galvanized	PVD Plating
& And	GB Grab Bar	PVMT Pavement
@ At	GC General Contractor	PWR Power
ACC Air Conditioning	GEN General	QCTY Quality
AB Anchor Bolt	GFRC Glass Fiber Reinforced Concrete	QTY Quantity
ACFL Access Floor	GRFG Glass Fiber Reinforced Gypsum	QTY Quarry Tile
ACFP Acoustic Ceiling Panel	GI Galvanized Iron	QTB Quarry Tile Base
ACPL Acoustic Panel	GL Glass, Glazed	QTY Quarry Tile Floor
ACT Acoustic Ceiling Tile	GLBLK Glass Block	QTR Quarter
AD Area Drain	GLONG Glass Opening	QTY Quantity
ADO Addendum	GOVT Government	R Radius, River
ADJ Adjustable	GPM Gallons per Minute	RAG Return Air Grill
ADMIN Administration, Administrator	GR Grade	RAI Return Air Inlets
AE Architect/Engineer	GRDG Grading	RB Rubber Base
AFJ Above Finished Floor	GST Gypsum Structural Tile	RCP Reinforced Concrete Pipe
AHJ Air Handling Unit	GWB Gypsum Wall Board	RD Road Drain
AJ Alteration	HC Handicapped	RE Refer, Reference
ALUM Aluminum	H2O Water	RECR Recirculate
ANCH Anchorage	HB Hose HBA	RECP Recredate
AND And/and	HC Hollow Core	RECT Rectangle
ANCH Anchorage	HOB Hard Board	RED Reducer
APPROX Approximate	HONR Hardner	REFG Refrigerator
ARCH Architectural	HDR Header	REG Register, Regulator
ASPH Asphalt	HDLR Hand Rail	RENF Reinforce
ASPM Asphaltnite	HDWR Hardware	REPR Repair
AT Asphalt Tile	HEX Hexagonal	REPR Reproduce
AUTO Automatic	HJT Head Joint	REOD Reorder
AV Audiovisual	HLV Handicapped Lavatory	REOR Requirements
AVG Average	HKL Hollow Metal	RESB Resistant
AVP Acoustic-Wall Panel	HORZ Horizontal	RESB Resistant
B Bathroom	HP Horse Power	RET Return
BATT Battery	HPT High Point	RETO Retaining
BBD Bulletin Board	HR Hour	REV Revers, Reelion
BCAB Base Cabinet	HT Height	RFG Roofing
BD Board	HTG Heating	RFL Reflective (die, or)
BL Blumens	HTR Heater	RFS Room Finish Schedule
BLD Building	HVAC Heating, Ventilating & Air Condition	RH Right Hand
BLDG Building	HVY Heavy	RHR Right Hand Reverse
BLDG Building	HVY Heavy	RM Room
BM Beam	HWD Hardwood	RND Round
BMR Beam & Map Holder	HWM Hot Water Heater	RO Rough Opening
BMS Benchmark	HVY Highway	ROW Right of Way
BOT Bottom	ID Inside Diameter	RR Railroad
BR Bearing	IMP Impregnate	RTG Rating
BRGP, Boring Plate	IN Inch, Inches	RV Riser
BRK Brick	INC Incorporated	RVS Riser
BRKT Bracket	IND Industrial	RWL Rainwater Leader
BRZ Bronze	INFO Information	S South
BS Both Sides	INSUL Insulate, Insulation	SAS Stained & Sealed
BSMT Basement	INT Interior, Internal	SAB Sound Absorption Fire Blanket
BTWN Between	INV Invert	SC Solid Core
BUR Built-up Roof	IPS Inside Pipe Size	SCHD Schedule
BWD Bowed	ISOL Isolation	SCHL School
BY Both Ways	JAN Janitor	SCHN Screen
C to C Center to Center	JCT Junction	SD Storm Drain
CALK Caulking	JST Jolt	SEBP Soap Dispenser
CB Cable Basin	JT Joint	SEC Second
CBQ Chalk Board	KO Knock Out	SECT Section
CEM Cement	KD Knock Down	SEP Separate
CEC Ceramic	KIT Kitchen	SEPP Service
CF/CI Contractor Furnish/Contractor Install	KPL Kick Plate	SF SFT Square Foot
CFR Cable Feet per Minute	L Length	SFTY Safety
CG Corner Guard	LAB Laboratory	SH Shelf, Shelves, Shelving
CHD Chisel	LAM Laminated	SHT Sheet
CHAM Chamber	LAT Lateral, Latrude	SHVD Shaving
CHAN Channel	LAV Lavatory	SHVR Shower
CI Cast Iron	LB Load	SIM Similar
CR Circle, Circular, Circumference	LBK Lumber	SKLT Skylit
CJ Control Joint	LCC Lead Coated Copper	SLNT Sealant
CL Center Line	LFG Lining	SM Smooth
CLC Ceiling Line	LF Linear Foot	SND Sanitary Napkin Dispenser
CLC Contact Limit Line	LQ Liquid	SP Stand Pipe
CLC Closet	LQ Liquid Glaze Coating	SPEC(S) Specification(s)
CLC Clear Clearance	LH Left Hand	SPEC(S) Specified
CM Concrete Masonry Unit	LIR Left Hand Reverse	SPEK Speaker
CMR Counter	LNFT Linear Feet	SQ Square
CO Clear Out	LQ Liquid	SS Standing Seam
CO Carbon Dioxide	LKR Locker	SSR Service Sink
COL Column	LL Line Load	SSMH Sanitary Sewer Man Hole
COMP Company	LP Liquid Propane	ST Steel
COMPT Compartment	LPT Low Point	STA Station
COMPR Compressed (CR), (CRN), (BLE)	LT Light	STD Standard
COND Condition	LTV Light	STD Standard
COND CT Conductive Vinyl Tile	LTV Lightweight	STR Structure
CONN Connection	LVR Louver	STG Sealing
CONSTR Construction	LWC Light Weight Concrete	STF Sifter
CONT Contain, Continuous	M Thousand	STL Steel
CONTR Contractor	MC Machine Cabinet	STOR Storage
CONV Conveyance	MCW Metal Casework	STR Structure
COR Corner	MECH Mechanical	STR Strip
CORR Corridor	MED Medium	SUB Substrate
CPR Copper	MEMO Memorandum	SUP Supply, Support
CPT Carpet	MEZ Mezzanine	SUPP Supplement
CR Cold Rolled	MFG Manufacturing	SUPP Supplement
CR Cold Rolled Sheet	MFR Manufacturer	SUR Surface
CSG Coating	MG Motor Generator	SUR Suspended
CSG Coating	MR Main Hole	SVN Sheet Vinyl
CSG Coating	MIN Minimum	SW Switch
CSG Coating	MIR Mirror	SWBD Switch Board
CSG Coating	MIRSH Mirror with Shelf	SWK Skewer
CSG Coating	MISC Miscellaneous	SYM Symmetrical
CSG Coating	MTR Mirror	SYS System
CSG Coating	MK Mark	T Thread
CSG Coating	ML Metal Lath	T&B Top and Bottom
CSG Coating	MLO Making	T&G Tongue and Groove
CSG Coating	MO Masonry Opening	TANG Tangent
CSG Coating	MOD Model, Module	TB Towel Bar
CSG Coating	MODBT Modified Blum	TC Terra Cotta
CSG Coating	MPTN Movable Partitions	TD Towel Dispenser
CSG Coating	MS Map Sink	TDI Technical
CSG Coating	MTD Mounted	TECHS Technicians
CSG Coating	MTG Mounting	TEL Telephone
CSG Coating	MTL Metal	TEMP Temporary, Temperature
CSG Coating	MUL Mult	TECHS Technicians
CSG Coating	MULT Multiple	THD Thread
CSG Coating	MUR Mirror	THERMO Thermostat
CSG Coating	MURSH Mirror with Shelf	THR Thru
CSG Coating	MISC Miscellaneous	THR Thru
CSG Coating	MTR Mirror	THRU Through
CSG Coating	MK Mark	TKBD Task Board
CSG Coating	ML Metal Lath	TKPN Task Panel
CSG Coating	MLO Making	TLC Top of Concrete Deck
CSG Coating	MO Masonry Opening	TOL Toler
CSG Coating	MOD Model, Module	TOL Tolerance
CSG Coating	MODBT Modified Blum	TOP Top of Masonry
CSG Coating	MPTN Movable Partitions	TOP Top of Plate
CSG Coating	MS Map Sink	TOP Top of Slab
CSG Coating	MTD Mounted	TOPT Top of Steel
CSG Coating	MTG Mounting	TOPT Top of Wall
CSG Coating	MTL Metal	TP Yield Point
CSG Coating	MUL Mult	TPD Toilet Paper Dispenser
CSG Coating	MULT Multiple	TPD Toilet Paper Hanger
CSG Coating	MUR Mirror	TPN Toilet Partition
CSG Coating	MURSH Mirror with Shelf	TR Transformer
CSG Coating	MISC Miscellaneous	TREAT Treatment
CSG Coating	MTR Mirror	TRMT Template
CSG Coating	MK Mark	TRM Terrace
CSG Coating	ML Metal Lath	TRTD Treated
CSG Coating	MLO Making	TV Television
CSG Coating	MO Masonry Opening	TX Textured
CSG Coating	MOD Model, Module	TX Typical
CSG Coating	MODBT Modified Blum	UC Under Cut
CSG Coating	MPTN Movable Partitions	UC Under Counter
CSG Coating	MS Map Sink	UGRD Underground
CSG Coating	MTD Mounted	UH Unit Heater
CSG Coating	MTG Mounting	UL Underlens Laboratories, Inc.
CSG Coating	MTL Metal	ULT Ultimate
CSG Coating	MUL Mult	UNEN Unfinished
CSG Coating	MULT Multiple	UNI Unlabeled
CSG Coating	MUR Mirror	UNO Unless Noted Otherwise
CSG Coating	MURSH Mirror with Shelf	UR Unlabeled
CSG Coating	MISC Miscellaneous	UTL Utility
CSG Coating	MTR Mirror	V Value
CSG Coating	MK Mark	VAR Variable
CSG Coating	ML Metal Lath	VB Vapor Barrier
CSG Coating	MLO Making	VBT Valve Box
CSG Coating	MO Masonry Opening	VCT Vinyl Composition Tile
CSG Coating	MOD Model, Module	VERT Vertical
CSG Coating	MODBT Modified Blum	VEST Vestibule
CSG Coating	MPTN Movable Partitions	VF Verify in Field
CSG Coating	MS Map Sink	VIN Vinyl
CSG Coating	MTD Mounted	VT Vitrified
CSG Coating	MTG Mounting	VJ V-Jointed
CSG Coating	MTL Metal	VNR Vaneer
CSG Coating	MUL Mult	VOL Volume
CSG Coating	MULT Multiple	VP Veneer Plaster
CSG Coating	MUR Mirror	VTR Vent Thru Roof
CSG Coating	MURSH Mirror with Shelf	VWC Vinyl Wall Covering
CSG Coating	MISC Miscellaneous	W West, Width
CSG Coating	MTR Mirror	W Without
CSG Coating	MK Mark	WB Wood Base
CSG Coating	ML Metal Lath	WC Water Closet
CSG Coating	MLO Making	WCAB Wall Cabinet
CSG Coating	MO Masonry Opening	WCD Wheelchair
CSG Coating	MOD Model, Module	WD Wood
CSG Coating	MODBT Modified Blum	WG Wire Glass
CSG Coating	MPTN Movable Partitions	WH Water Heater
CSG Coating	MS Map Sink	WHC Warehouse
CSG Coating	MTD Mounted	WIN Window
CSG Coating	MTG Mounting	WL Water Line
CSG Coating	MTL Metal	WM Wire Mesh
CSG Coating	MUL Mult	WP Waterproofing
CSG Coating	MULT Multiple	WPT Working Part
CSG Coating	MUR Mirror	WR Waste Recycle
CSG Coating	MURSH Mirror with Shelf	WRT Water Resistant
CSG Coating	MISC Miscellaneous	WS Weather Stripping
CSG Coating	MTR Mirror	WSC Water
CSG Coating	MK Mark	
CSG Coating	ML Metal Lath	
CSG Coating	MLO Making	
CSG Coating	MO Masonry Opening	
CSG Coating	MOD Model, Module	
CSG Coating	MODBT Modified Blum	
CSG Coating	MPTN Movable Partitions	
CSG Coating	MS Map Sink	
CSG Coating	MTD Mounted	
CSG Coating	MTG Mounting	
CSG Coating	MTL Metal	
CSG Coating	MUL Mult	
CSG Coating	MULT Multiple	
CSG Coating	MUR Mirror	
CSG Coating	MURSH Mirror with Shelf	
CSG Coating	MISC Miscellaneous	
CSG Coating	MTR Mirror	
CSG Coating	MK Mark	
CSG Coating	ML Metal Lath	
CSG Coating	MLO Making	
CSG Coating	MO Masonry Opening	
CSG Coating	MOD Model, Module	
CSG Coating	MODBT Modified Blum	
CSG Coating	MPTN Movable Partitions	
CSG Coating	MS Map Sink	
CSG Coating	MTD Mounted	
CSG Coating	MTG Mounting	
CSG Coating	MTL Metal	
CSG Coating	MUL Mult	
CSG Coating	MULT Multiple	
CSG Coating	MUR Mirror	
CSG Coating	MURSH Mirror with Shelf	
CSG Coating	MISC Miscellaneous	
CSG Coating	MTR Mirror	
CSG Coating	MK Mark	
CSG Coating	ML Metal Lath	
CSG Coating	MLO Making	
CSG Coating	MO Masonry Opening	
CSG Coating	MOD Model, Module	
CSG Coating	MODBT Modified Blum	
CSG Coating	MPTN Movable Partitions	
CSG Coating	MS Map Sink	
CSG Coating	MTD Mounted	
CSG Coating	MTG Mounting	
CSG Coating	MTL Metal	
CSG Coating	MUL Mult	
CSG Coating	MULT Multiple	
CSG Coating	MUR Mirror	
CSG Coating	MURSH Mirror with Shelf	
CSG Coating	MISC Miscellaneous	
CSG Coating	MTR Mirror	
CSG Coating	MK Mark	
CSG Coating	ML Metal Lath	
CSG Coating	MLO Making	
CSG Coating	MO Masonry Opening	
CSG Coating	MOD Model, Module	
CSG Coating	MODBT Modified Blum	
CSG Coating	MPTN Movable Partitions	
CSG Coating	MS Map Sink	
CSG Coating	MTD Mounted	
CSG Coating	MTG Mounting	
CSG Coating	MTL Metal	
CSG Coating	MUL Mult	
CSG Coating	MULT Multiple	
CSG Coating	MUR Mirror	
CSG Coating	MURSH Mirror with Shelf	
CSG Coating	MISC Miscellaneous	
CSG Coating	MTR Mirror	
CSG Coating	MK Mark	
CSG Coating	ML Metal Lath	
CSG Coating	MLO Making	
CSG Coating	MO Masonry Opening	
CSG Coating	MOD Model, Module	
CSG Coating	MODBT Modified Blum	
CSG Coating	MPTN Movable Partitions	
CSG Coating	MS Map Sink	
CSG Coating	MTD Mounted	
CSG Coating	MTG Mounting	
CSG Coating	MTL Metal	
CSG Coating	MUL Mult	
CSG Coating	MULT Multiple	
CSG Coating	MUR Mirror	
CSG Coating	MURSH Mirror with Shelf	
CSG Coating	MISC Miscellaneous	
CSG Coating	MTR Mirror	
CSG Coating	MK Mark	
CSG Coating	ML Metal Lath	
CSG Coating	MLO Making	
CSG Coating	MO Masonry Opening	
CSG Coating	MOD Model, Module	
CSG Coating	MODBT Modified Blum	
CSG Coating	MPTN Movable Partitions	
CSG Coating	MS Map Sink	
CSG Coating	MTD Mounted	
CSG Coating	MTG Mounting	
CSG Coating	MTL Metal	
CSG Coating	MUL Mult	
CSG Coating	MULT Multiple	
CSG Coating	MUR Mirror	
CSG Coating	MURSH Mirror with Shelf	
CSG Coating	MISC Miscellaneous	
CSG Coating	MTR Mirror	
CSG Coating	MK Mark	
CSG Coating	ML Metal Lath	
CSG Coating	MLO Making	
CSG Coating	MO Masonry Opening	
CSG Coating	MOD Model, Module	
CSG Coating	MODBT Modified Blum	
CSG Coating	MPTN Movable Partitions	
CSG Coating	MS Map Sink	
CSG Coating	MTD Mounted	
CSG Coating	MTG Mounting	
CSG Coating	MTL Metal	
CSG Coating	MUL Mult	
CSG Coating	MULT Multiple	
CSG Coating	MUR Mirror	
CSG Coating	MURSH Mirror with Shelf	
CSG Coating	MISC Miscellaneous	
CSG Coating	MTR Mirror	
CSG Coating	MK Mark	
CSG Coating	ML Metal Lath	
CSG Coating	MLO Making	
CSG Coating	MO Masonry Opening	
CSG Coating	MOD Model, Module	
CSG Coating	MODBT Modified Blum	
CSG Coating	MPTN Movable Partitions	
CSG Coating	MS Map Sink	
CSG Coating	MTD Mounted	
CSG Coating	MTG Mounting	
CSG Coating	MTL Metal	
CSG Coating	MUL Mult	
CSG Coating	MULT Multiple	
CSG Coating	MUR Mirror	
CSG Coating	MURSH Mirror with Shelf	
CSG Coating	MISC Miscellaneous	
CSG Coating	MTR Mirror	
CSG Coating	MK Mark	
CSG Coating	ML Metal Lath	
CSG Coating	MLO Making	
CSG Coating	MO Masonry Opening	
CSG Coating	MOD Model, Module	
CSG Coating	MODBT Modified Blum	
CSG Coating	MPTN Movable Partitions	
CSG Coating	MS Map Sink	
CSG Coating	MTD Mounted	
CSG Coating	MTG Mounting	
CSG Coating	MTL Metal	
CSG Coating	MUL Mult	
CSG Coating	MULT Multiple	
CSG Coating	MUR Mirror	
CSG Coating	MURSH Mirror with Shelf	
CSG Coating	MISC Miscellaneous	
CSG Coating	MTR Mirror	
CSG Coating	MK Mark	
CSG Coating	ML Metal Lath	
CSG Coating	MLO Making	
CSG Coating	MO Masonry Opening	
CSG Coating	MOD Model, Module	
CSG Coating	MODBT Modified Blum	
CSG Coating	MPTN Movable Partitions	
CSG Coating	MS Map Sink	
CSG Coating	MTD Mounted	
CSG Coating	MTG Mounting	
CSG Coating	MTL Metal	
CSG Coating	MUL Mult	
CSG Coating	MULT Multiple	
CSG Coating	MUR Mirror	
CSG Coating	MURSH Mirror with Shelf	
CSG Coating	MISC Miscellaneous	
CSG Coating	MTR Mirror	
CSG Coating	MK Mark	
CSG Coating	ML Metal Lath	
CSG Coating	MLO Making	
CSG Coating	MO Masonry Opening	
CSG Coating	MOD Model, Module	
CSG Coating	MODBT Modified Blum	
CSG Coating	MPTN Movable Partitions	
CSG Coating	MS Map Sink	
CSG Coating	MTD Mounted	
CSG Coating	MTG Mounting	
CSG Coating	MTL Metal	
CSG Coating	MUL Mult	
CSG Coating	MULT Multiple	
CSG Coating	MUR Mirror	
CSG Coating	MURSH Mirror with Shelf	
CSG Coating	MISC Miscellaneous	
CSG Coating	MTR Mirror	
CSG Coating	MK Mark	
CSG Coating	ML Metal Lath	
CSG Coating	MLO Making	
CSG Coating	MO Masonry Opening	
CSG Coating	MOD Model, Module	
CSG Coating	MODBT Modified Blum	
CSG Coating	MPTN Movable Partitions	
CSG Coating	MS Map Sink	
CSG Coating	MTD Mounted	
CSG Coating	MTG Mounting	
CSG Coating	MTL Metal	
CSG Coating	MUL Mult	
CSG Coating	MULT Multiple	
CSG Coating	MUR Mirror	
CSG Coating	MURSH Mirror with Shelf	
CSG Coating	MISC Miscellaneous	
CSG Coating	MTR Mirror	
CSG Coating	MK Mark	
CSG Coating	ML Metal Lath	
CSG Coating	MLO Making	
CSG Coating	MO Masonry Opening	
CSG Coating	MOD Model, Module	
CSG Coating	MODBT Modified Blum	
CSG Coating	MPTN Movable Partitions	
CSG Coating	MS Map Sink	
CSG Coating	MTD Mounted	
CSG Coating	MTG Mounting	
CSG Coating	MTL Metal	
CSG Coating	MUL Mult	
CSG Coating	MULT Multiple	
CSG Coating	MUR Mirror	
CSG Coating	MURSH Mirror with Shelf	
CSG Coating	MISC Miscellaneous	
CSG Coating	MTR Mirror	
CSG Coating	MK Mark	
CSG Coating	ML Metal Lath	
CSG Coating	MLO Making	
CSG Coating	MO Masonry Opening	
CSG Coating	MOD Model, Module	
CSG Coating	MODBT Modified Blum	
CSG Coating	MPTN Movable Partitions	
CSG Coating	MS Map Sink	
CSG Coating	MTD Mounted	
CSG Coating	MTG Mounting	
CSG Coating	MTL Metal	
CSG Coating	MUL Mult	
CSG Coating	MULT Multiple	
CSG Coating	MUR Mirror	
CSG Coating	MURSH Mirror with Shelf	
CSG Coating	MISC Miscellaneous	
CSG Coating	MTR Mirror	
CSG Coating	MK Mark	
CSG Coating	ML Metal Lath	
CSG Coating	MLO Making	
CSG Coating	MO Masonry Opening	
CSG Coating	MOD Model, Module	
CSG Coating	MODBT Modified Blum	
CSG Coating	MPTN Movable Partitions	
CSG Coating	MS Map Sink	
CSG Coating	MTD Mounted	
CSG Coating	MTG Mounting	
CSG Coating	MTL Metal	
CSG Coating	MUL Mult	
CSG Coating	MULT Multiple	
CSG Coating	MUR Mirror	
CSG Coating	MURSH Mirror with Shelf	
CSG Coating	MISC Miscellaneous	
CSG Coating	MTR Mirror	
CSG Coating	MK Mark	
CSG Coating	ML Metal Lath	
CSG Coating	MLO Making	
CSG Coating	MO Masonry Opening	
CSG Coating	MOD Model, Module	
CSG Coating	MODBT Modified Blum	
CSG Coating	MPTN Movable Partitions	
CSG Coating	MS Map Sink	
CSG Coating	MTD Mounted	
CSG Coating	MTG Mounting	
CSG Coating	MTL Metal	
CSG Coating	MUL Mult	
CSG Coating	MULT Multiple	
CSG Coating		





hatch+ulland owen  
architects

702 San Antonio Street  
Austin, Texas 78701  
T: 512.474.8548  
F: 512.474.8643  
www.huarchitects.com

Civil Engineer:  
Chan & Partners Engineering, LLC  
4319 James Casey St., Ste. 300  
Austin, TX 78745  
(512) 480-8155

Structural Engineer:  
Structures  
1018 West 11th St., Ste. 100  
Austin, TX 78703  
(512) 499-0919

Mechanical, Electrical  
and Plumbing Engineer:  
AYS Engineering, LLC  
203 East Main Street, Ste. 204  
Round Rock, TX 78664  
(512) 961-6835

Consultant:  
.....  
.....  
.....

The Murphy Hotel

702 San Antonio Street  
Austin, TX 78701

A 24-unit hotel in the heart of  
Downtown Austin.

NOTE: This document, the ideas and design  
incorporated herein are and shall remain the  
property of hatch+ulland owen architects. These documents  
are not to be used or altered, in whole or in part,  
for other than the original intended use, nor are  
they to be assigned to any third party without  
written permission from hatch+ulland owen architects.

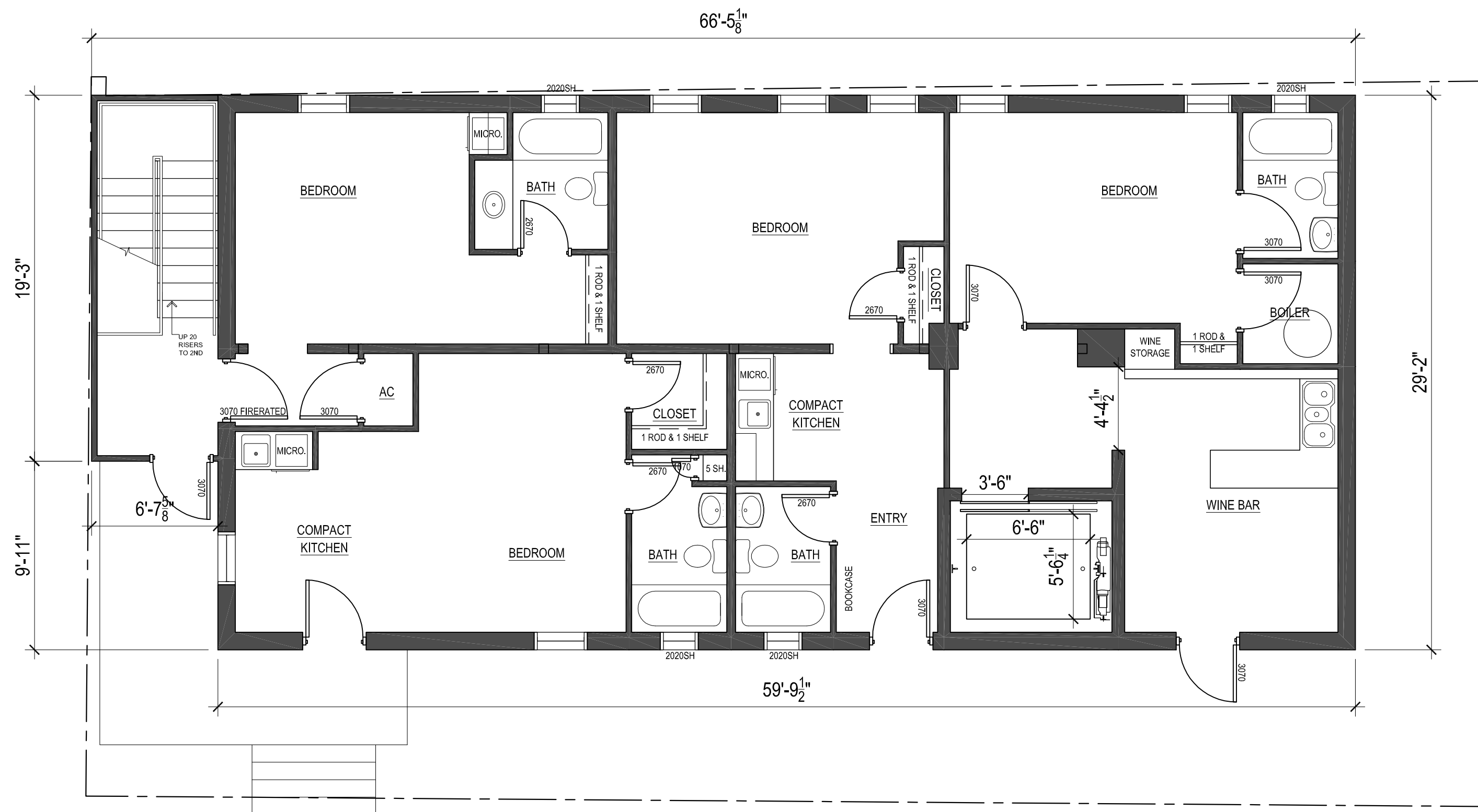
NOTE: By act of submitting a bid for the  
proposed contract, the bidder warrants that the  
bidder, and all subcontractors and material  
suppliers he intends to use have carefully and  
thoroughly reviewed the drawings and  
specifications and other construction documents  
and have found them complete and free from any  
ambiguities and sufficient for the purpose  
intended. The bidder further warrants that to the  
best of their or their subcontractors' and material  
suppliers' knowledge all materials and products  
specified or indicated herein are acceptable for all  
applicable codes and authorities.

NOT FOR REGULATORY APPROVAL,  
PERMITTING OR CONSTRUCTION

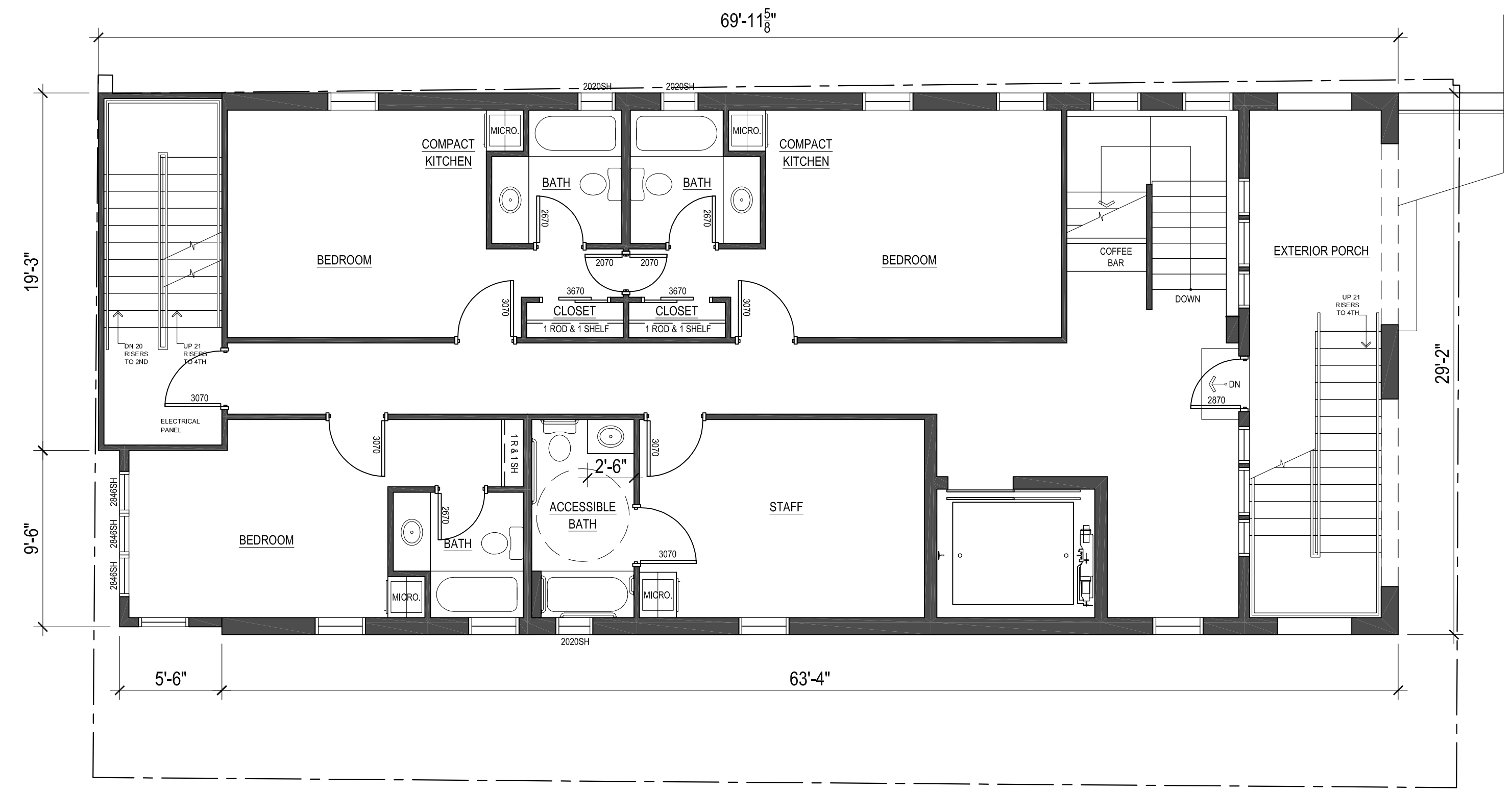
△	ISSUE DATES:
.....	12/03/12 Cert. of Appr.
.....	.....
.....	.....
.....	.....
.....	.....
.....	.....
.....	.....
.....	.....

THE MURPHY HOTEL  
SITE PLAN

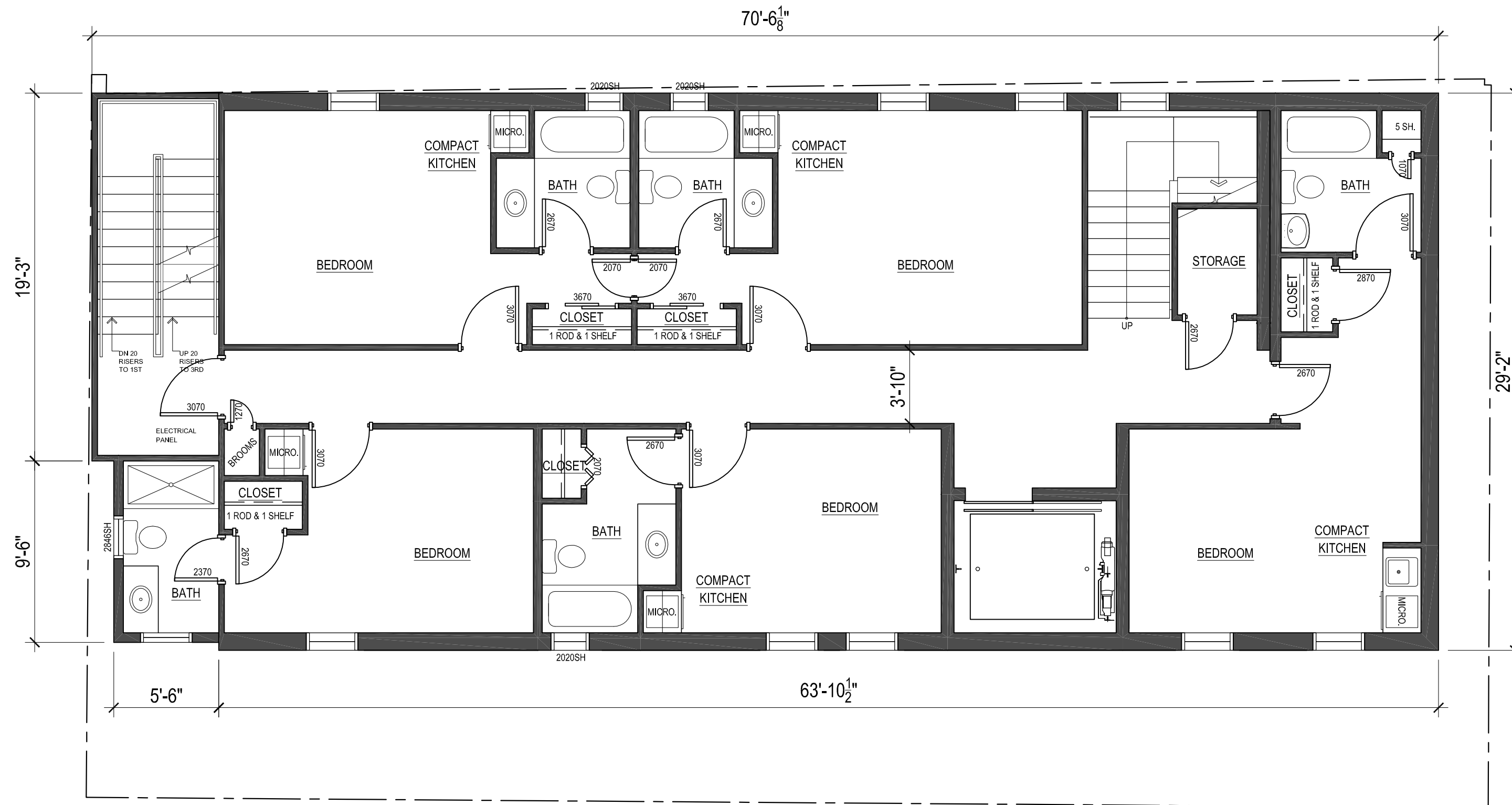
A1.1



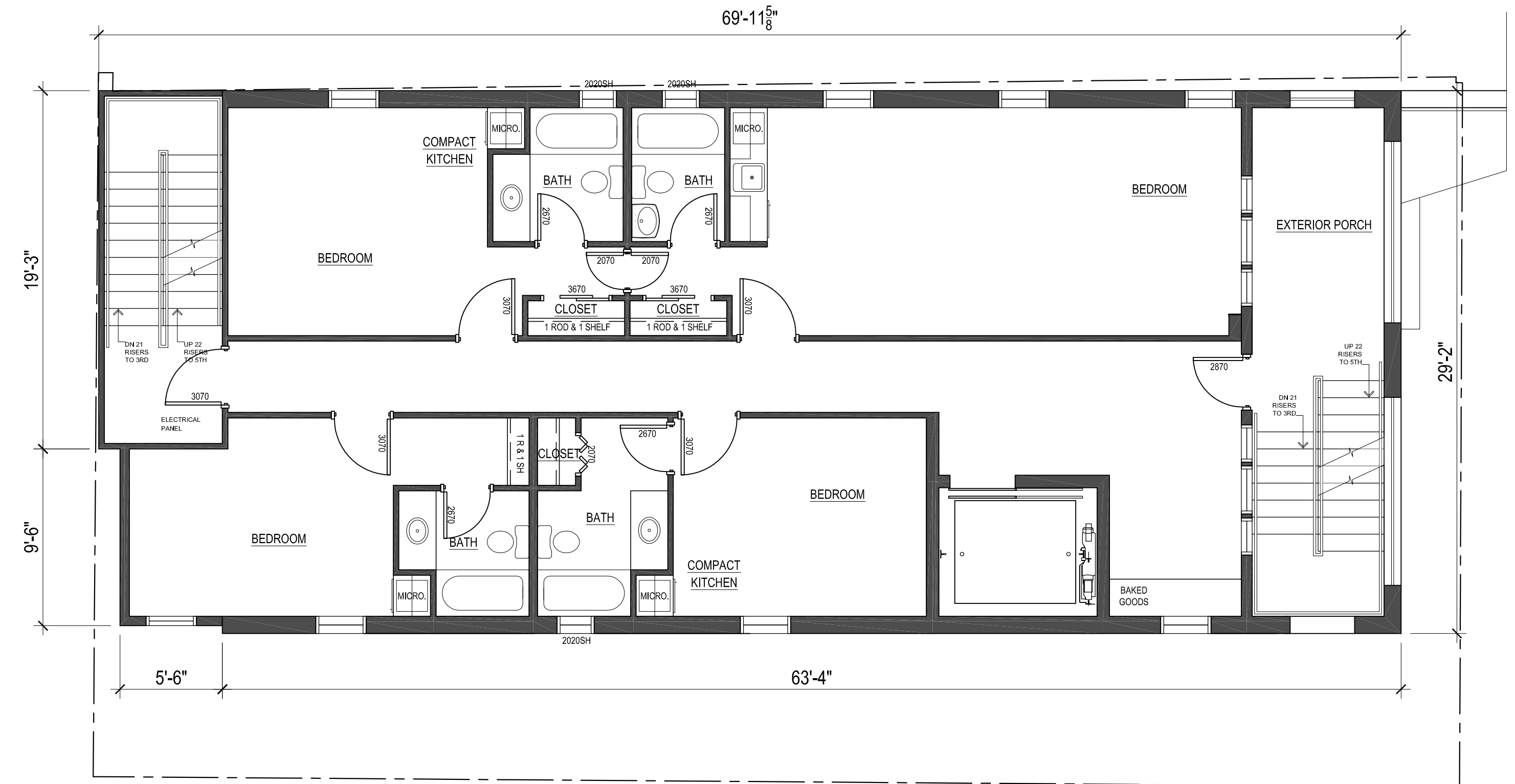
01 FIRST FLOOR PLAN  
SCALE: 3/16" = 1'-0"



03 THIRD FLOOR PLAN  
SCALE: 3/16" = 1'-0"



02 SECOND FLOOR PLAN  
SCALE: 3/16" = 1'-0"



04 FOURTH FLOOR PLAN  
SCALE: 3/16" = 1'-0"



hatch+ulland owen  
architects

702 San Antonio Street  
Austin, Texas 78701  
T: 512.474.8548  
F: 512.474.8643

www.huarchitects.com

Civil Engineer:  
Chan & Partners Engineering, LLC  
4319 James Casey St., Ste. 300  
Austin, TX 78745  
(512) 480-8155

Structural Engineer:  
Structures  
1018 West 11th St., Ste. 100  
Austin, TX 78703  
(512) 499-0919

Mechanical, Electrical  
and Plumbing Engineer:  
AYS Engineering, LLC  
203 East Main Street, Ste. 204  
Round Rock, TX 78664  
(512) 961-6835

Consultant:  
.....  
.....  
.....

The Murphy Hotel  
702 San Antonio Street  
Austin, TX 78701  
A 24-unit hotel in the heart of  
Downtown Austin.

NOTE: This document, the ideas and design incorporated herein are and shall remain the property of hu+o architects. These documents are not to be used or altered, in whole or in part, for other than the original intended use, nor are they to be assigned to any third party without written permission from hu+o architects.

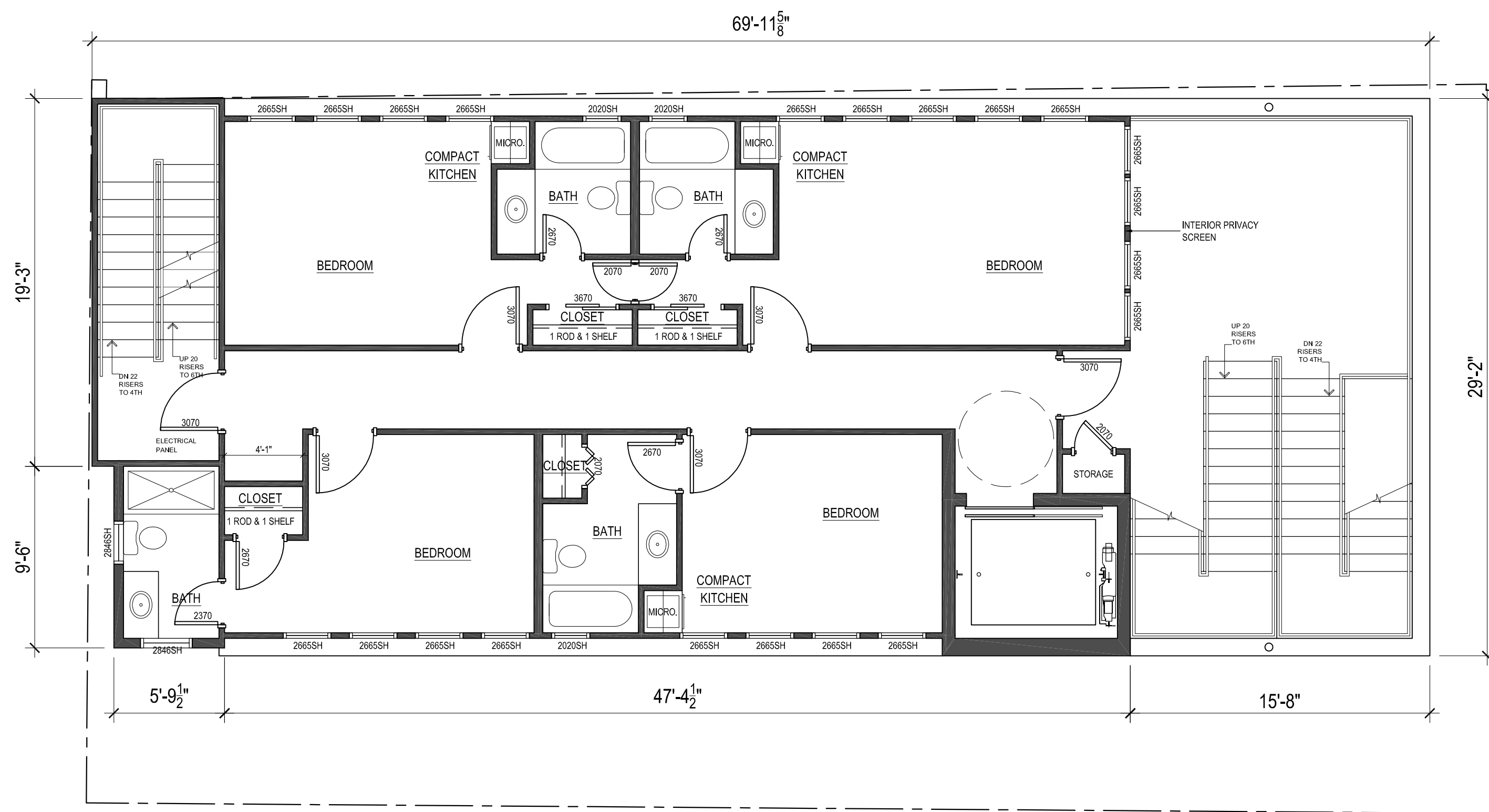
NOTE: By act of submitting a bid for the proposed contract, the bidder warrants that the bidder, and all subcontractors and material suppliers he intends to use have carefully and thoroughly reviewed the drawings and specifications and other construction documents and have found them complete and free from any ambiguities and sufficient for the purpose intended. The bidder further warrants that to the best of their or their subcontractors' and material suppliers' knowledge all materials and products specified or indicated herein are acceptable for all applicable codes and authorities.

NOT FOR REGULATORY APPROVAL,  
PERMITTING OR CONSTRUCTION

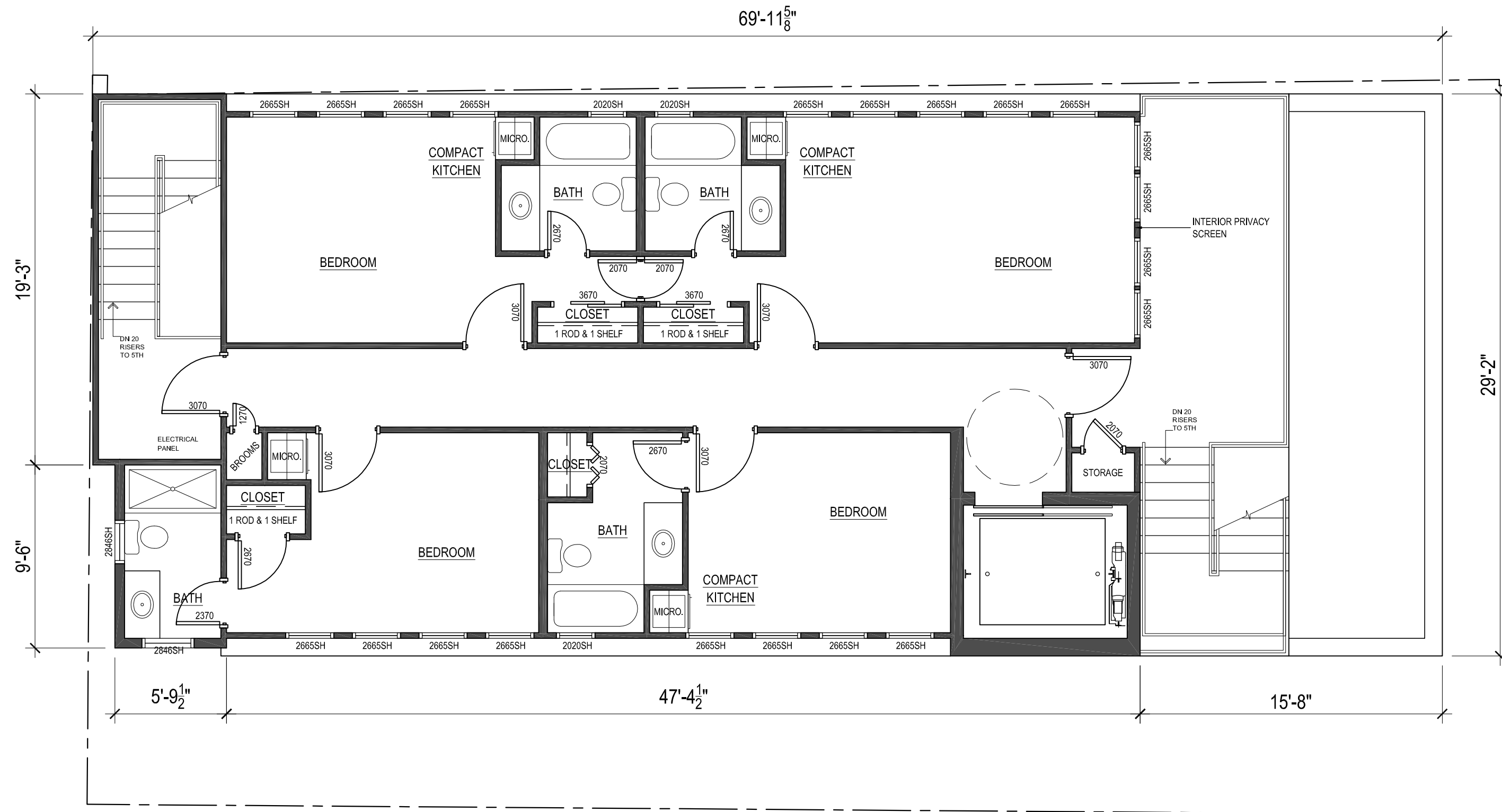
ISSUE DATES:	
12/03/12	Cert. of Appr.
.....	.....
.....	.....
.....	.....
.....	.....
.....	.....
.....	.....
.....	.....

THE MURPHY HOTEL  
FLOOR PLAN - LVLS 1-4

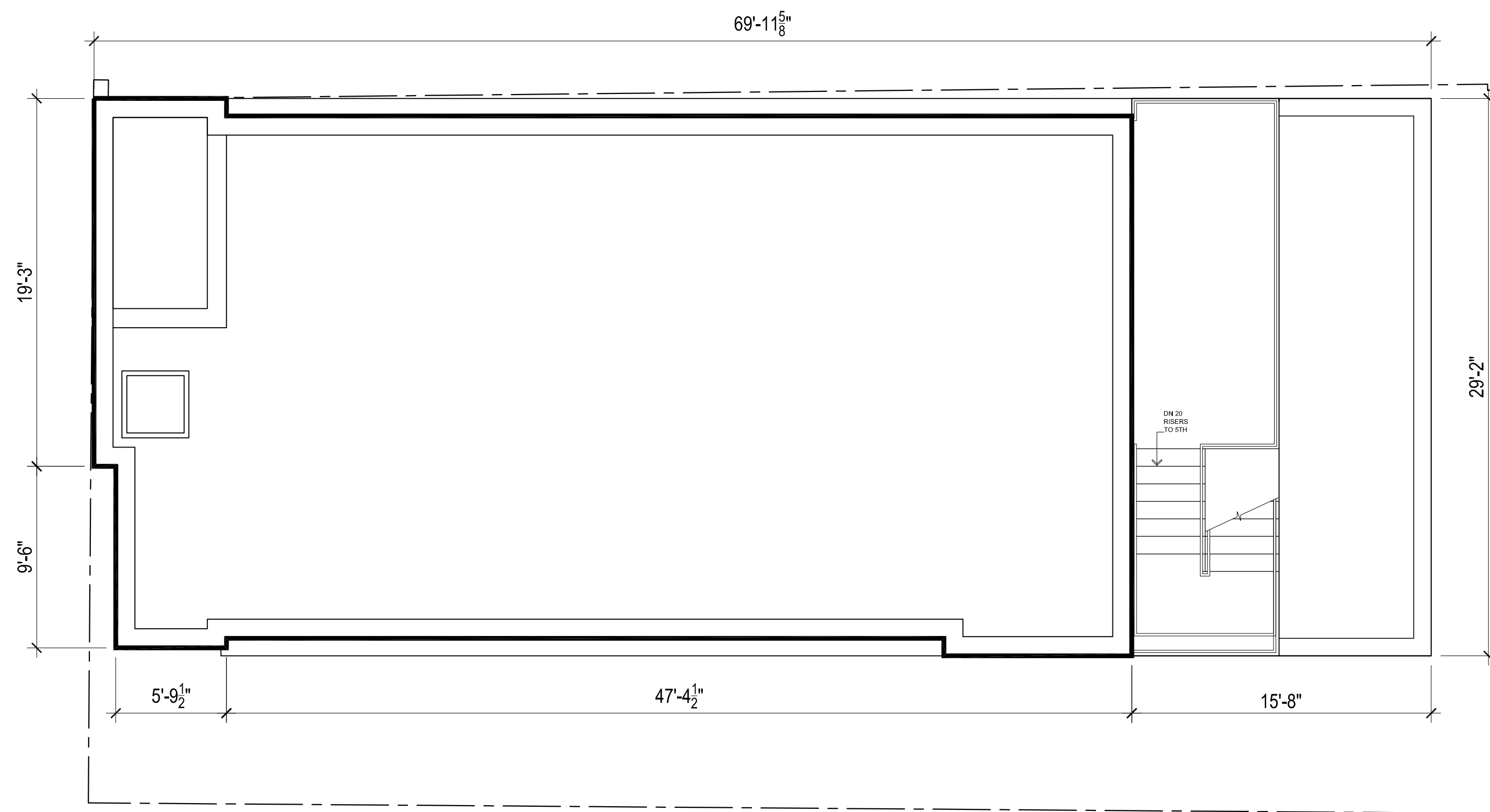
A2.1



01 FIFTH FLOOR PLAN  
SCALE: 3/16" = 1'-0"



02 SIXTH FLOOR PLAN  
SCALE: 3/16" = 1'-0"



03 ROOF PLAN  
SCALE: 3/16" = 1'-0"



hatch+ulland owen  
architects

702 San Antonio Street  
Austin, Texas 78701  
T: 512.474.8548  
F: 512.474.8643  
www.huoaarchitects.com

Civil Engineer:  
Chan & Partners Engineering, LLC  
4319 James Casey St., Ste. 300  
Austin, TX 78745  
(512) 480-8155

Structural Engineer:  
Structures  
1018 West 11th St., Ste. 100  
Austin, TX 78703  
(512) 499-0919

Mechanical, Electrical  
and Plumbing Engineer:  
AYS Engineering, LLC  
203 East Main Street, Ste. 204  
Round Rock, TX 78664  
(512) 961-6835

Consultant:  
.....  
.....  
.....  
.....

The Murphy Hotel

702 San Antonio Street  
Austin, TX 78701

A 24-unit hotel in the heart of  
Downtown Austin.

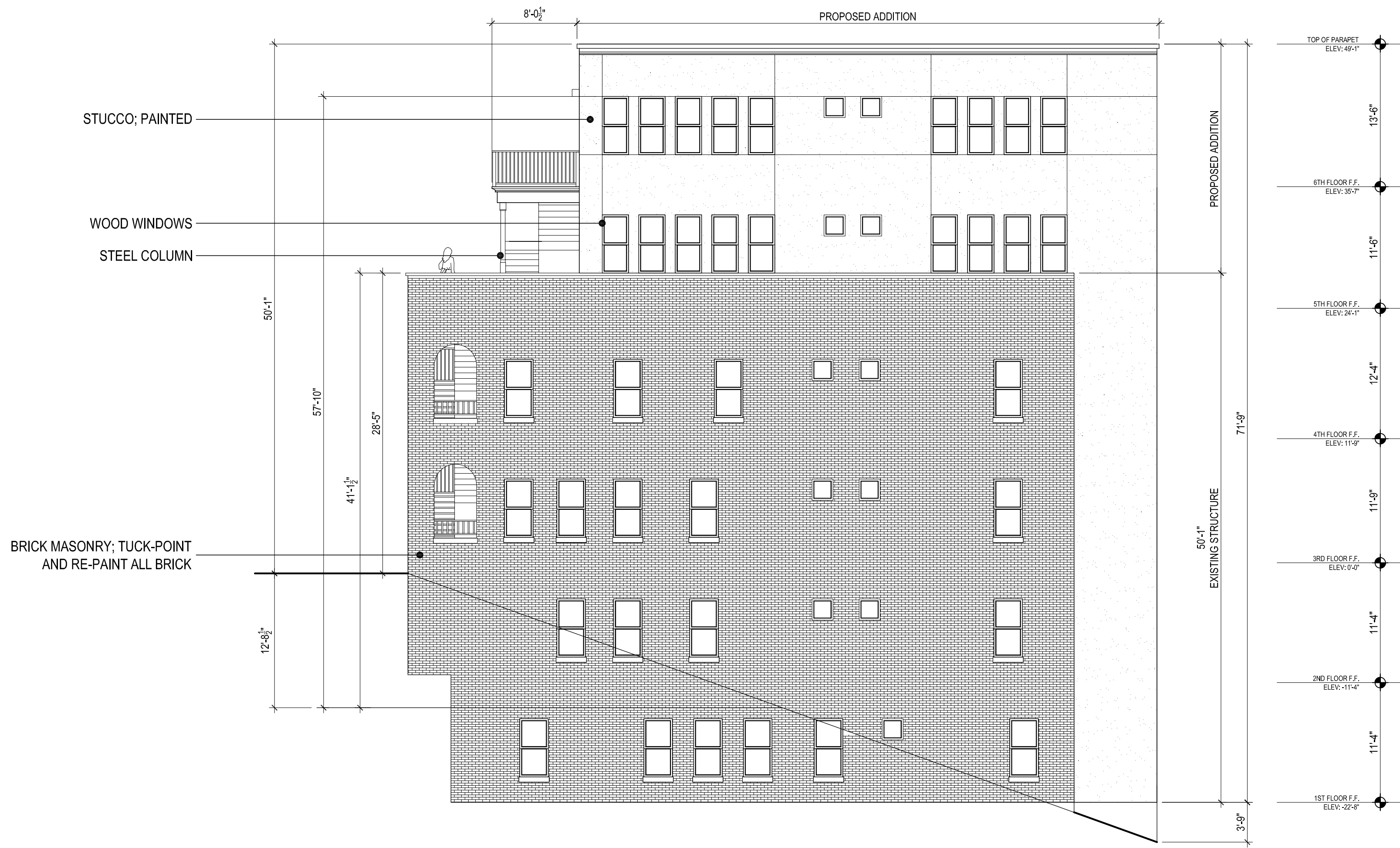
NOTE: This document, the ideas and design incorporated herein are and shall remain the property of hu+o architects. These documents are not to be used or altered, in whole or in part, for other than the original intended use, nor are they to be assigned to any third party without written permission from hu+o architects.

NOTE: By act of submitting a bid for the proposed contract, the bidder warrants that the bidder, and all subcontractors and material suppliers he intends to use have carefully and thoroughly reviewed the drawings and specifications and other construction documents and have found them complete and free from any ambiguities and sufficient for the purpose intended. The bidder further warrants that to the best of their or their subcontractors' and material suppliers' knowledge all materials and products specified or indicated herein are acceptable for all applicable codes and authorities.

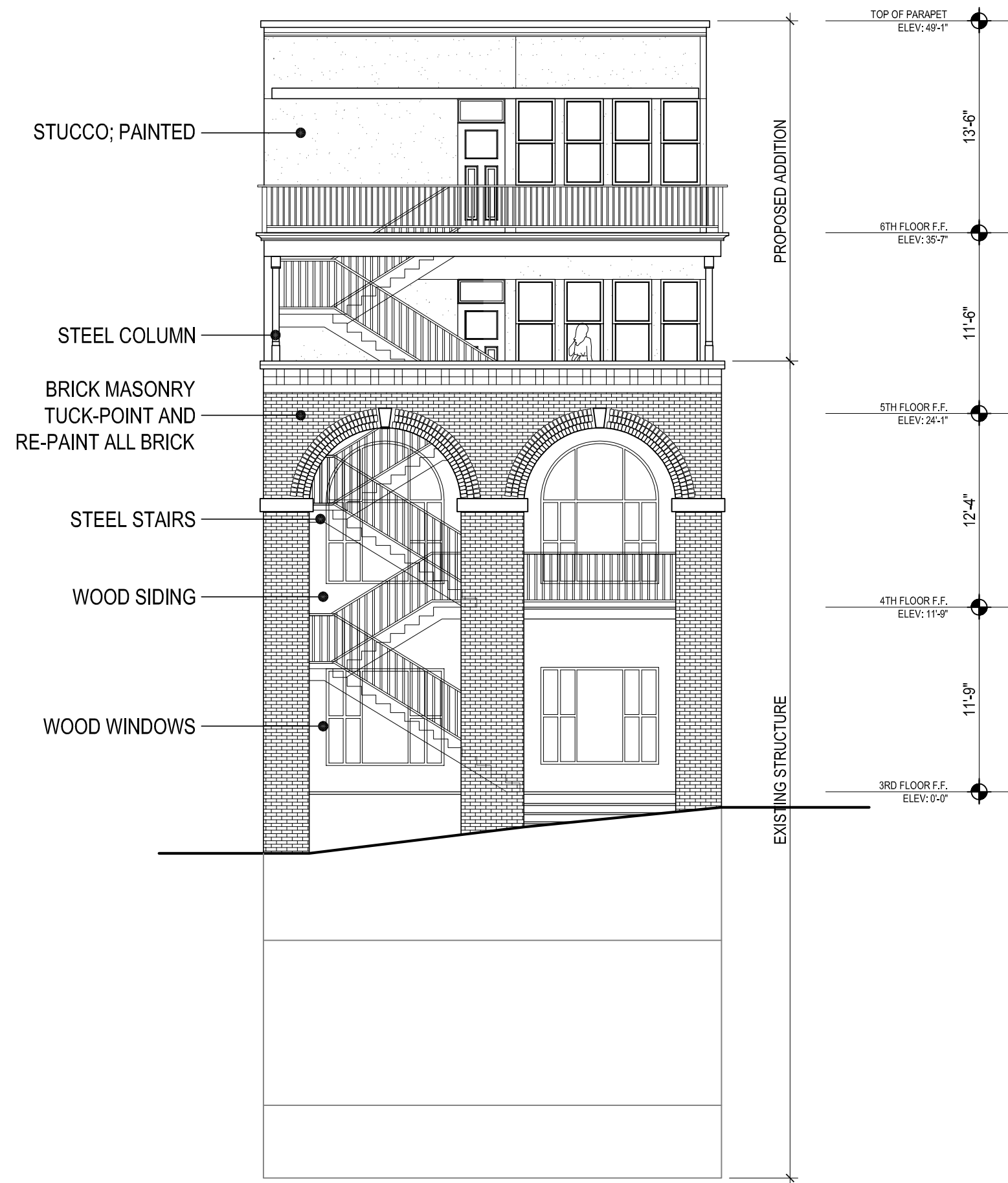
NOT FOR REGULATORY APPROVAL,  
PERMITTING OR CONSTRUCTION.

ISSUE DATES:	
12/03/12	Cert. of Appr.
.....	.....
.....	.....
.....	.....
.....	.....
.....	.....
.....	.....
.....	.....





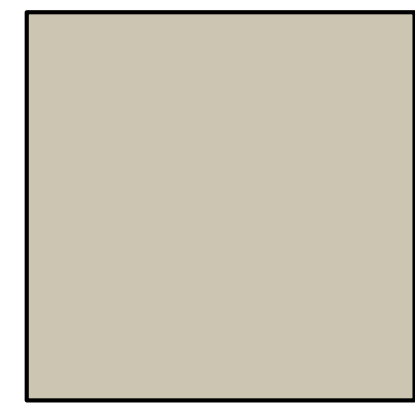
01 NORTH ELEVATION (SIDE)  
SCALE: 1/8" = 1'-0"



02 EAST ELEVATION (FRONT)  
SCALE: 1/8" = 1'-0"



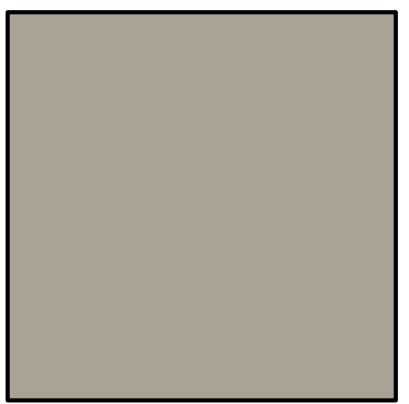
03 ENLARGED FRONT ELEVATION  
SCALE: 1/4" = 1'-0"



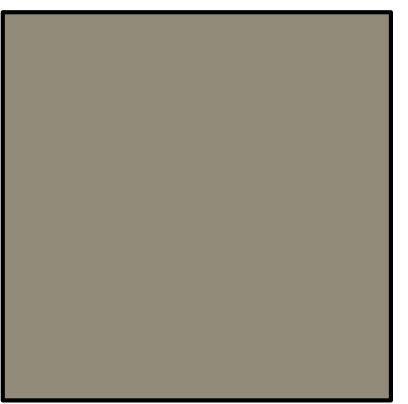
Windows: Coastal Fog 976



Doors: Black Forest Green PM-12

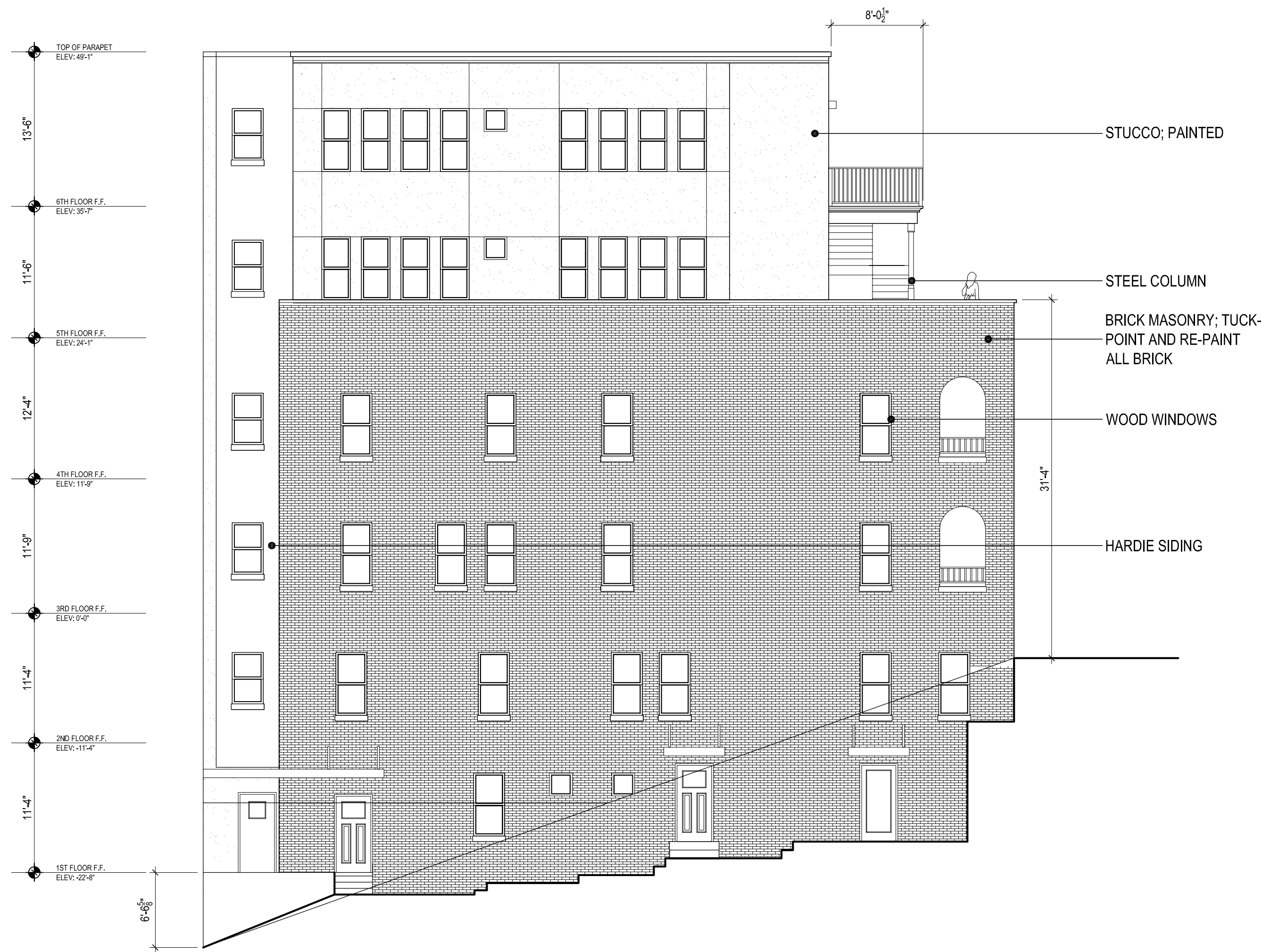


Stucco: Rockport Gray HC-105

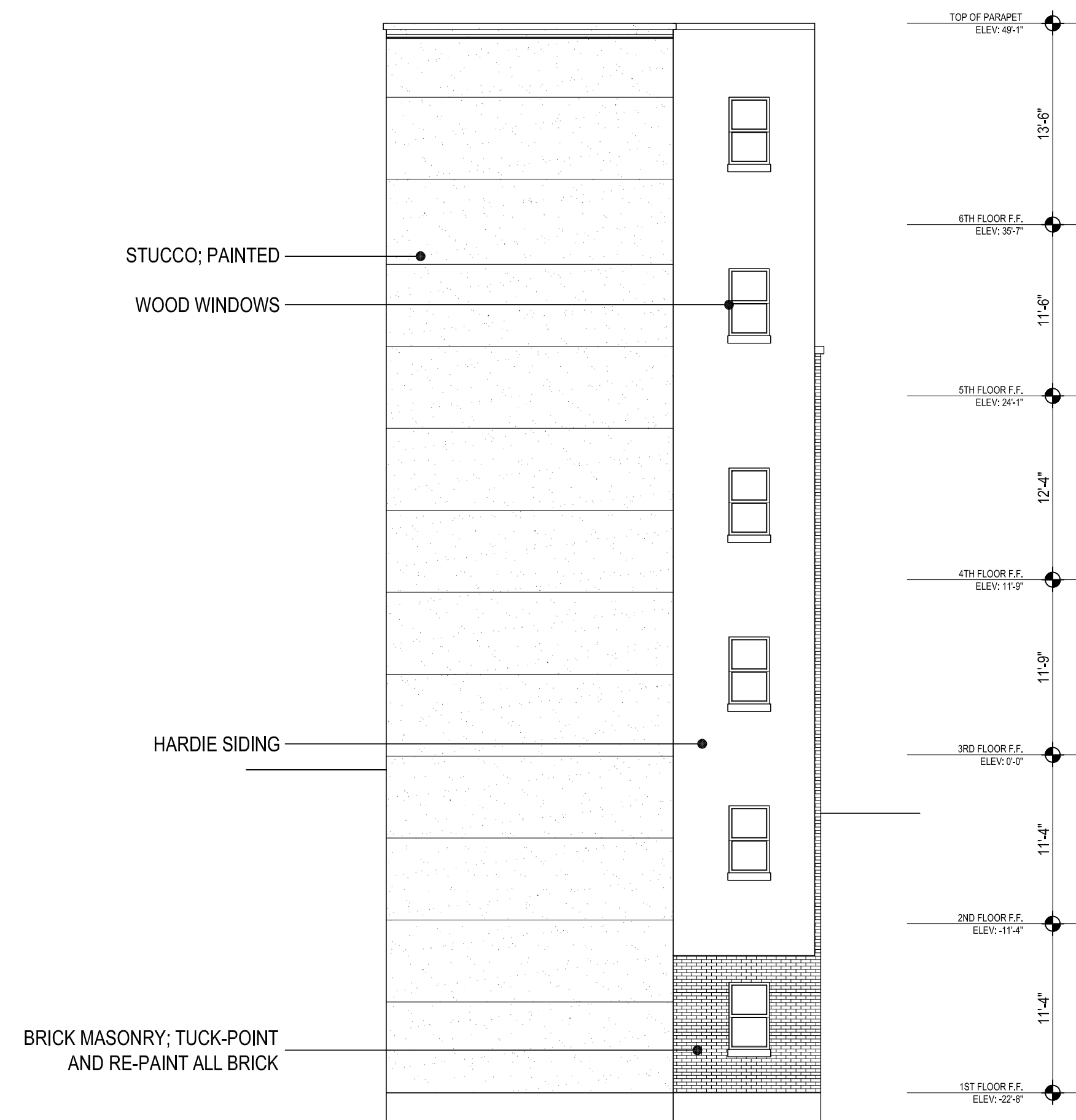


Brick: Copley Gray HC-104





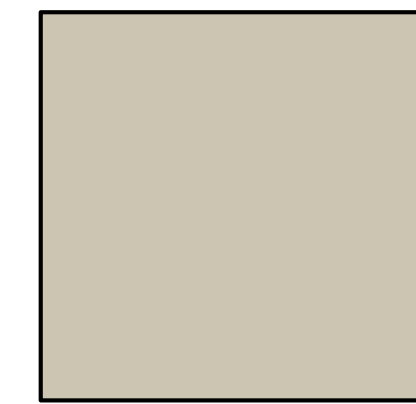
01 SOUTH ELEVATION (SIDE)  
SCALE: 1/8" = 1'-0"



02 WEST ELEVATION (REAR)  
SCALE: 1/8" = 1'-0"



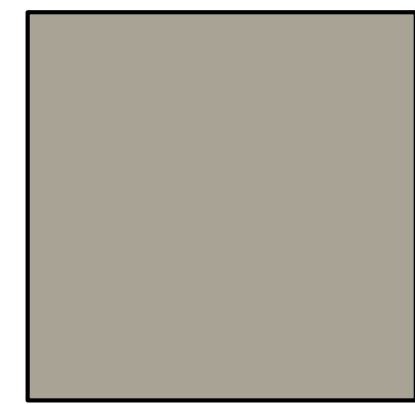
03 ENLARGED SIDE ELEVATION  
SCALE: 1/4" = 1'-0"



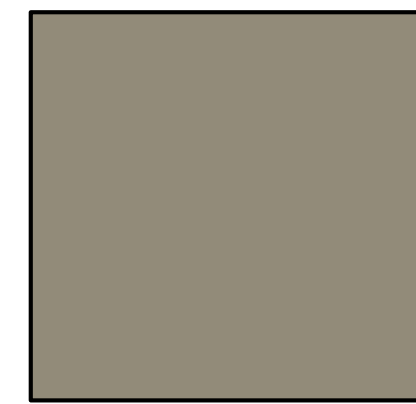
Windows: Coastal Fog 976



Doors: Black Forest Green PM-12

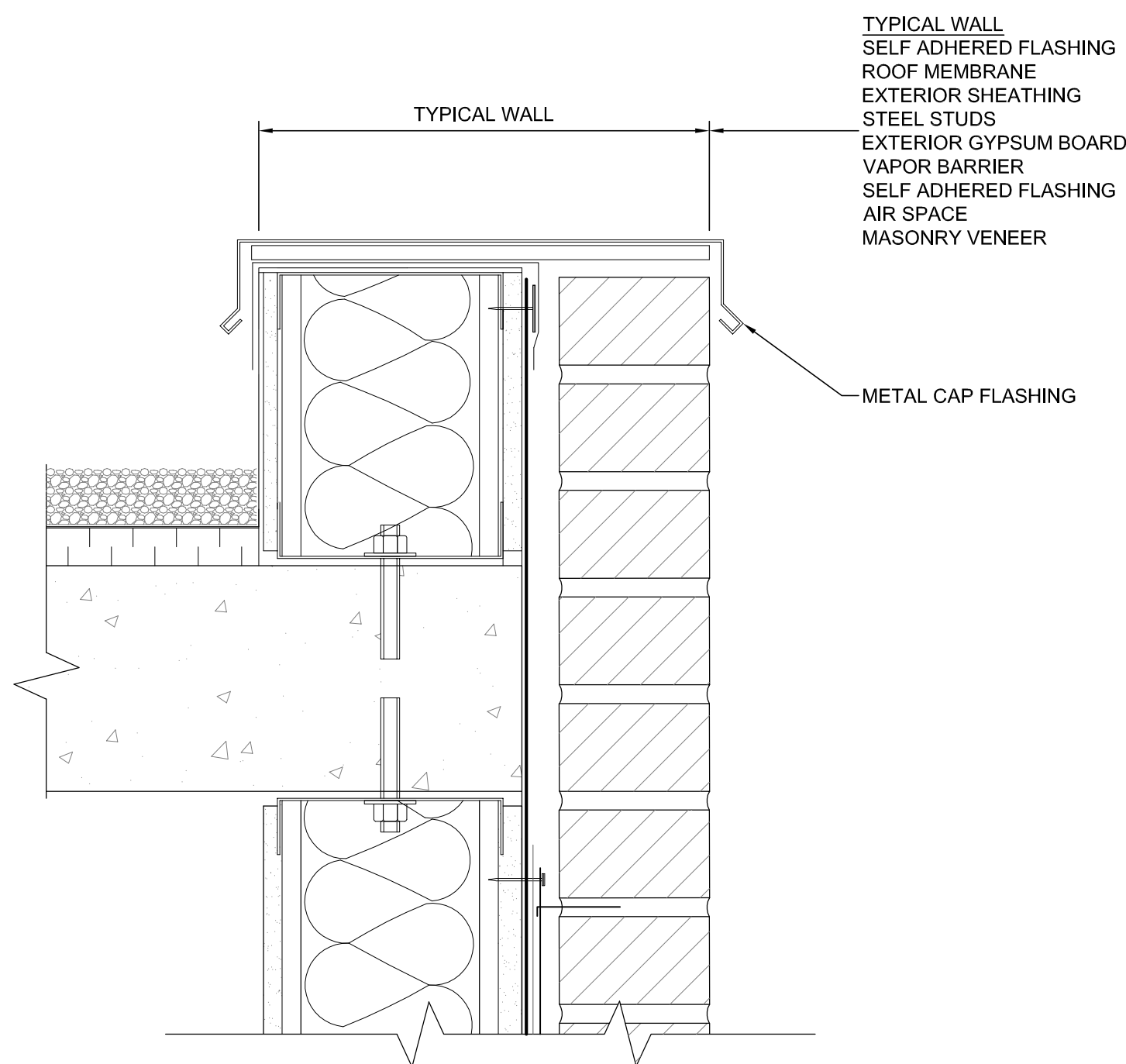


Stucco: Rockport Gray HC-105

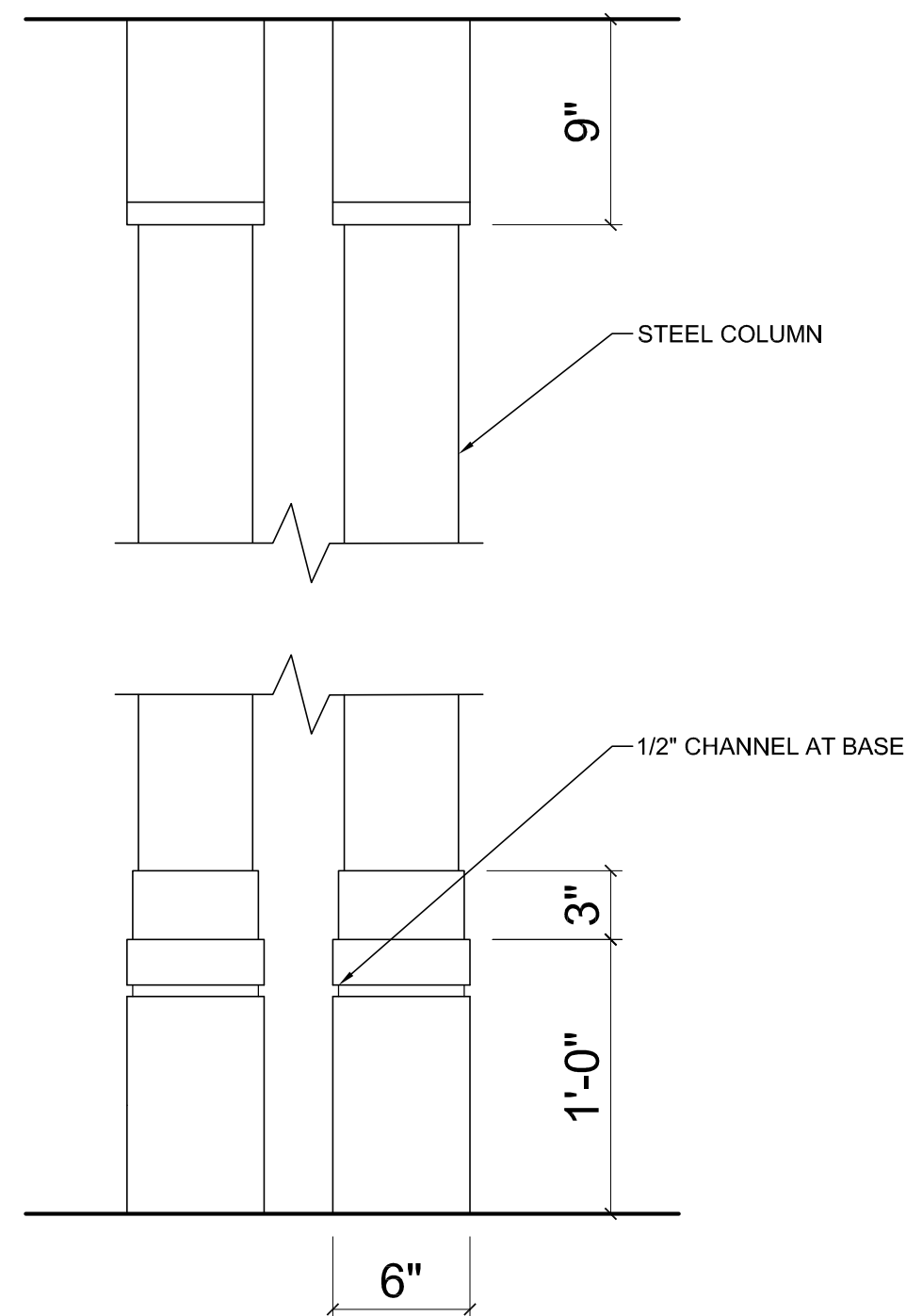


Brick: Copley Gray HC-104

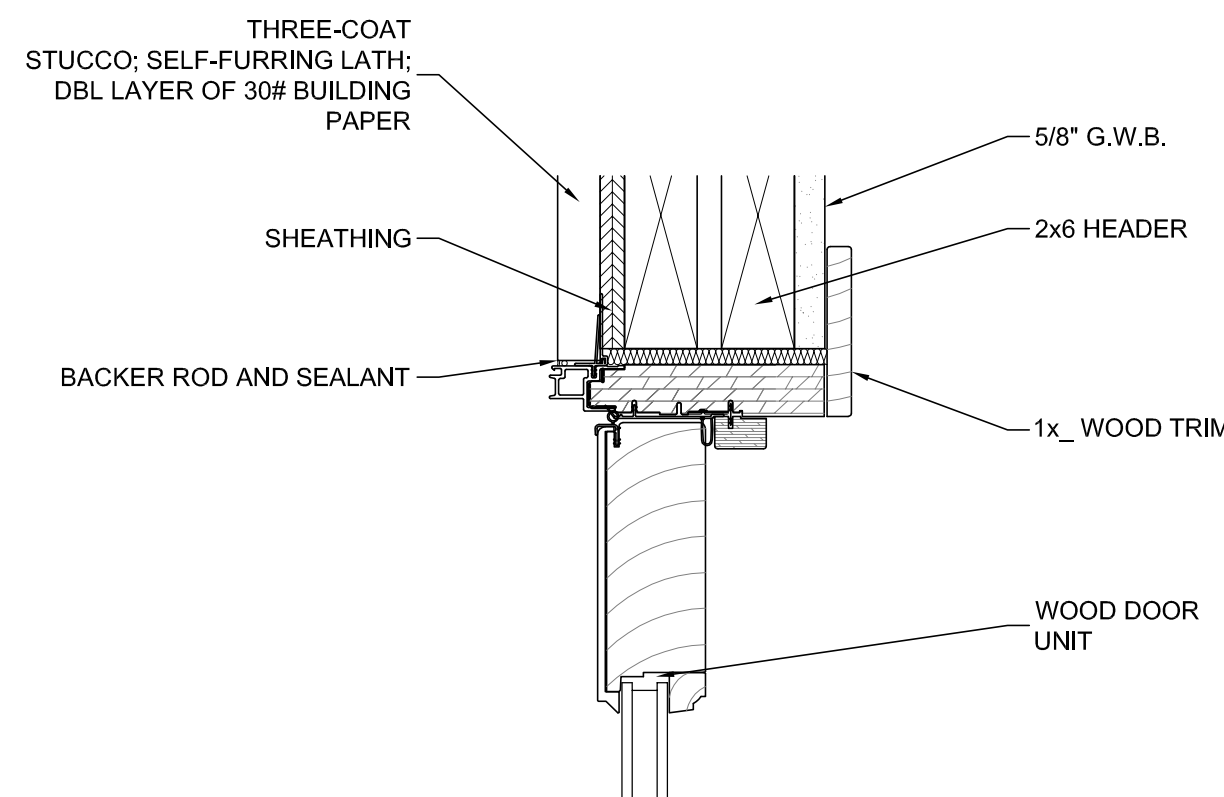




01 | **DETAIL AT PARAPET**  
SCALE: 3" = 1'-0"

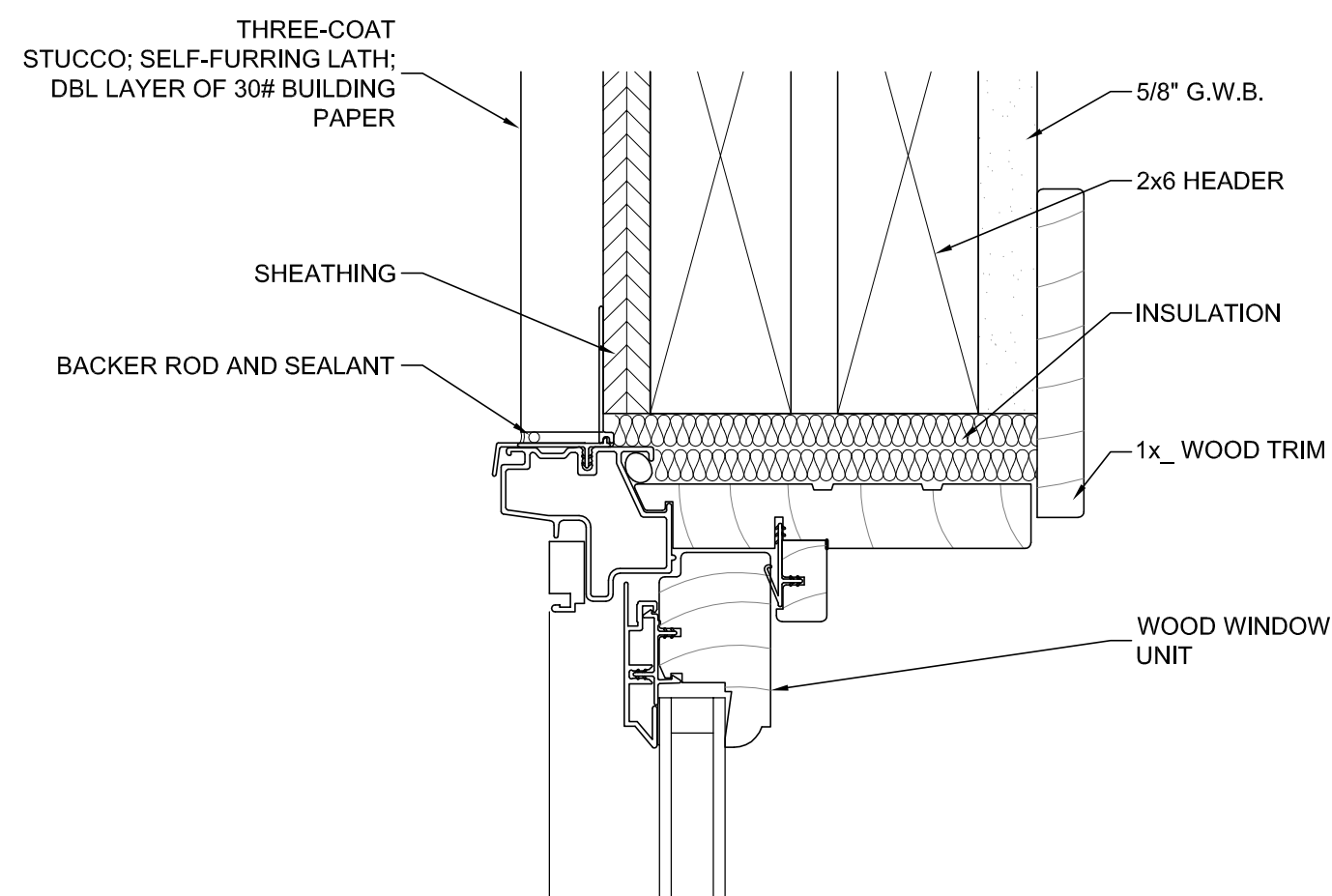


04 | **DETAIL AT COLUMN, TYP.**  
SCALE: 1 1/2" = 1'-0"

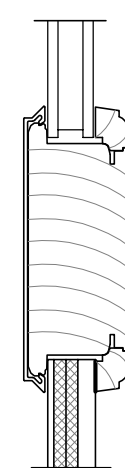


06 | **DETAIL AT DOOR HEAD, TYP.**  
SCALE: 3" = 1'-0"

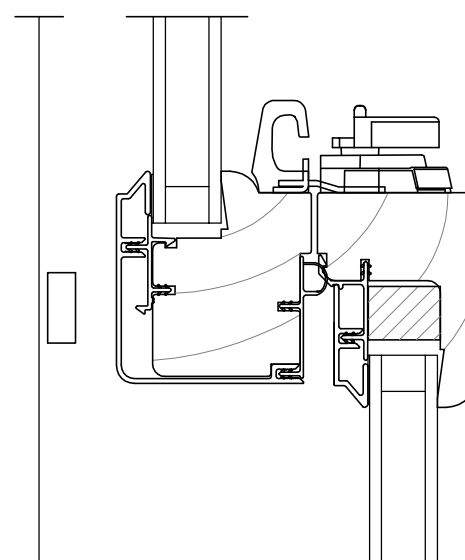
ALL DOOR AND WINDOW DETAILS  
TAKEN AT EXTERIOR STUCCO  
WALL



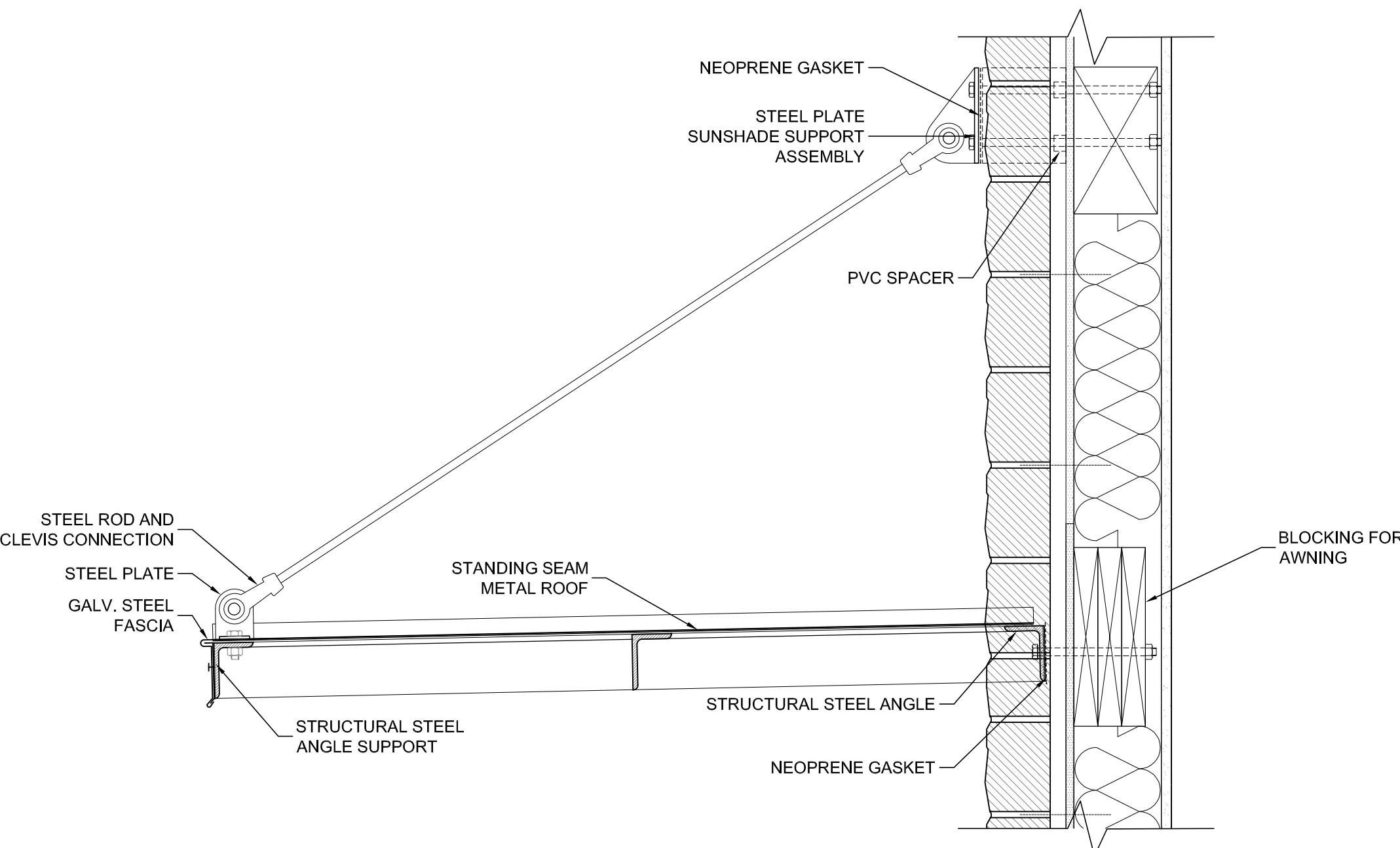
10 | **DETAIL AT WNDW HEAD, TYP.**  
SCALE: 6" = 1'-0"



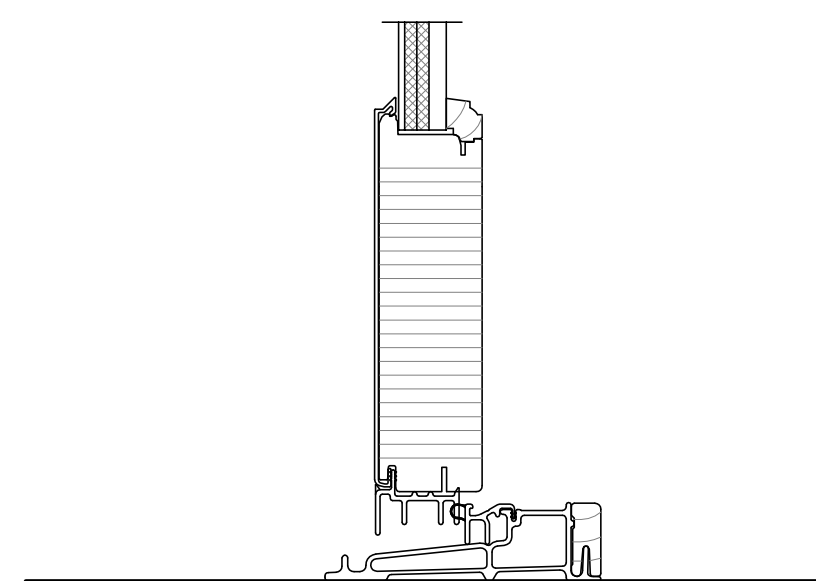
07 | **DETAIL AT INT. DOOR RAIL, TYP.**  
SCALE: 3" = 1'-0"



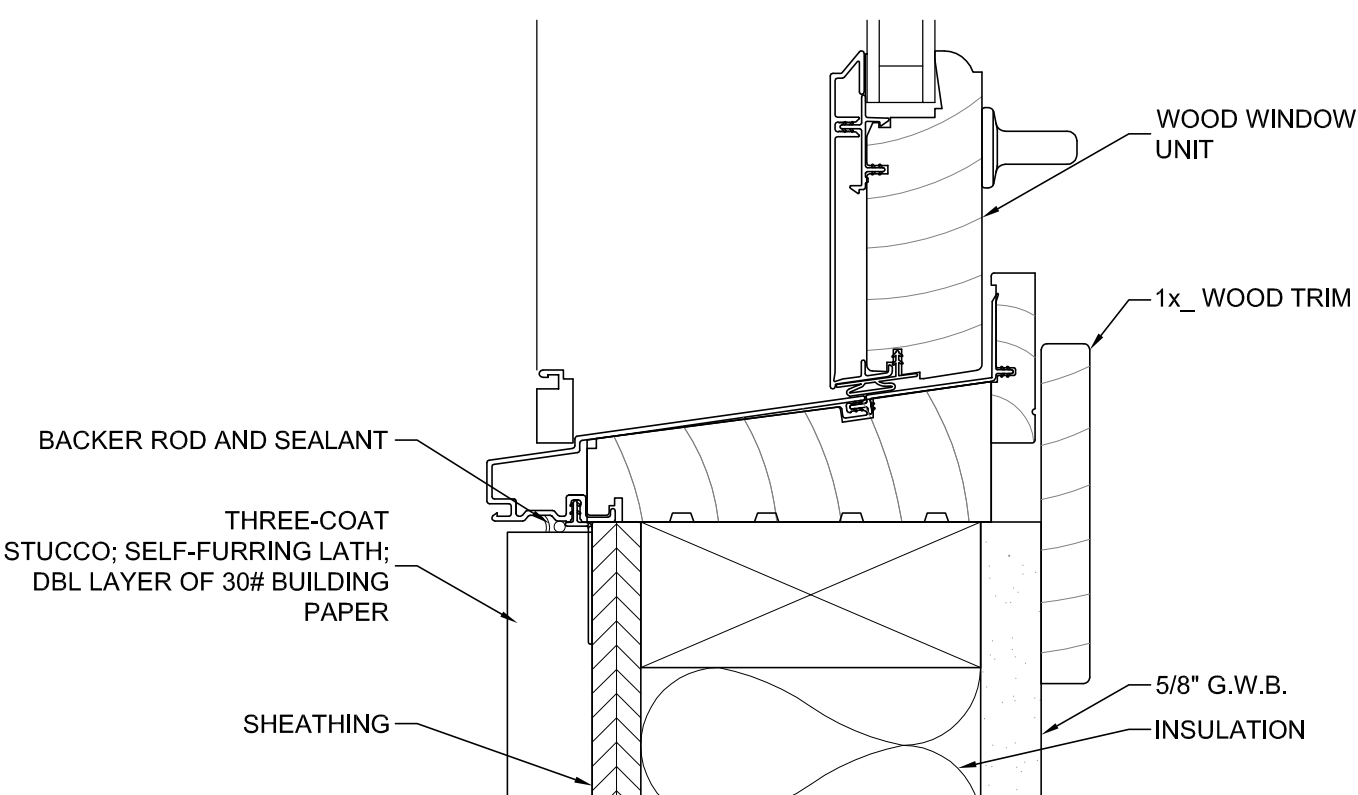
11 | **DETAIL AT WNDW CHECKRAIL, TYP.**  
SCALE: 6" = 1'-0"



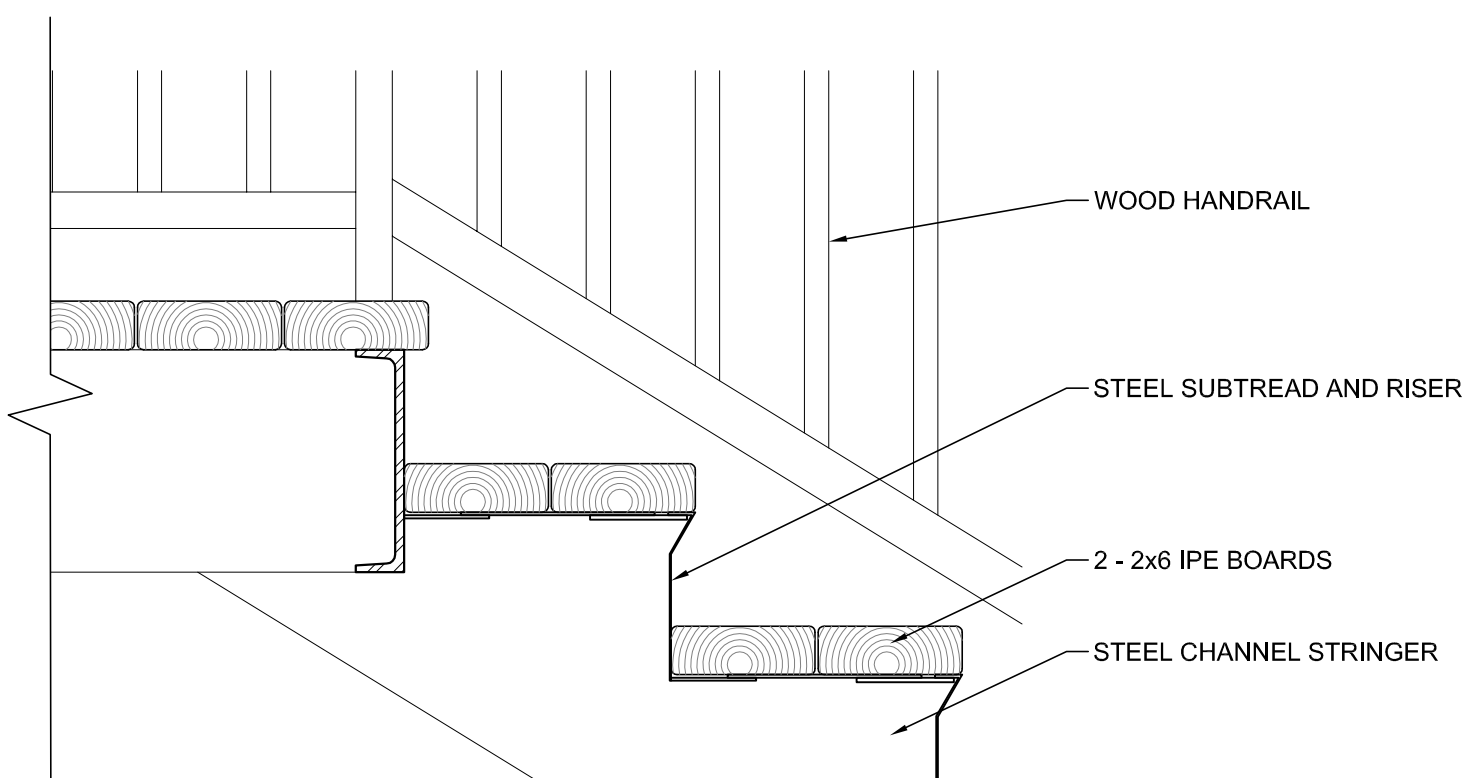
02 | **DETAIL AT AWNING**  
SCALE: 1 1/2" = 1'-0"



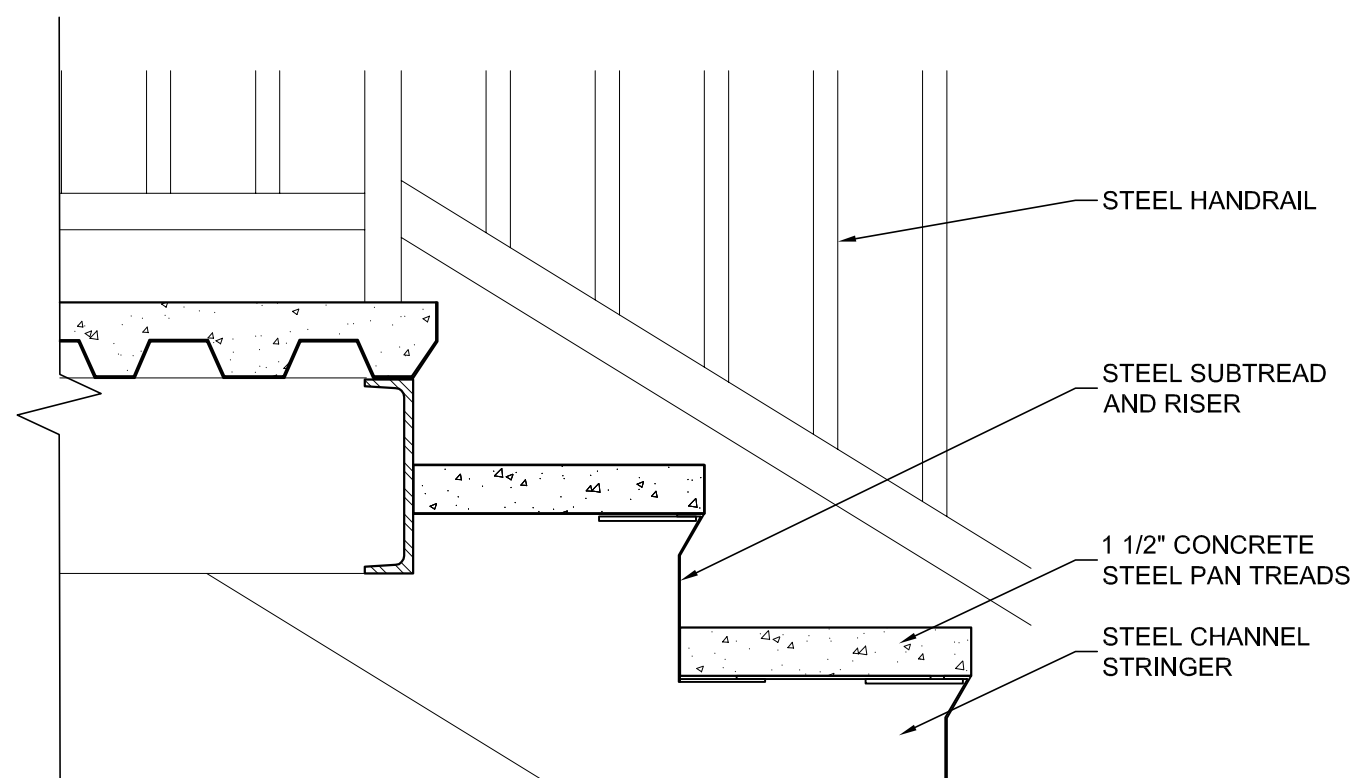
08 | **DETAIL AT DOOR SILL, TYP.**  
SCALE: 3" = 1'-0"



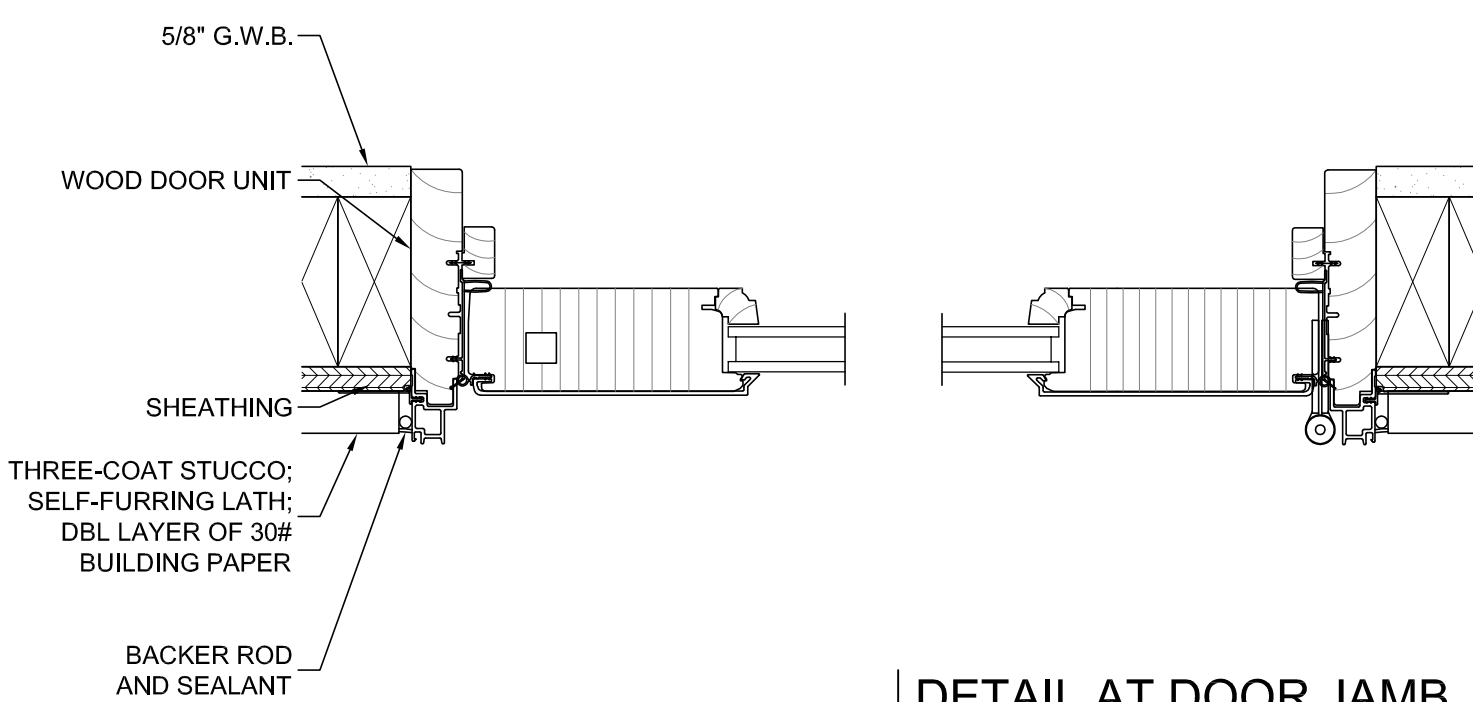
12 | **DETAIL OF WNDW SILL, TYP.**  
SCALE: 6" = 1'-0"



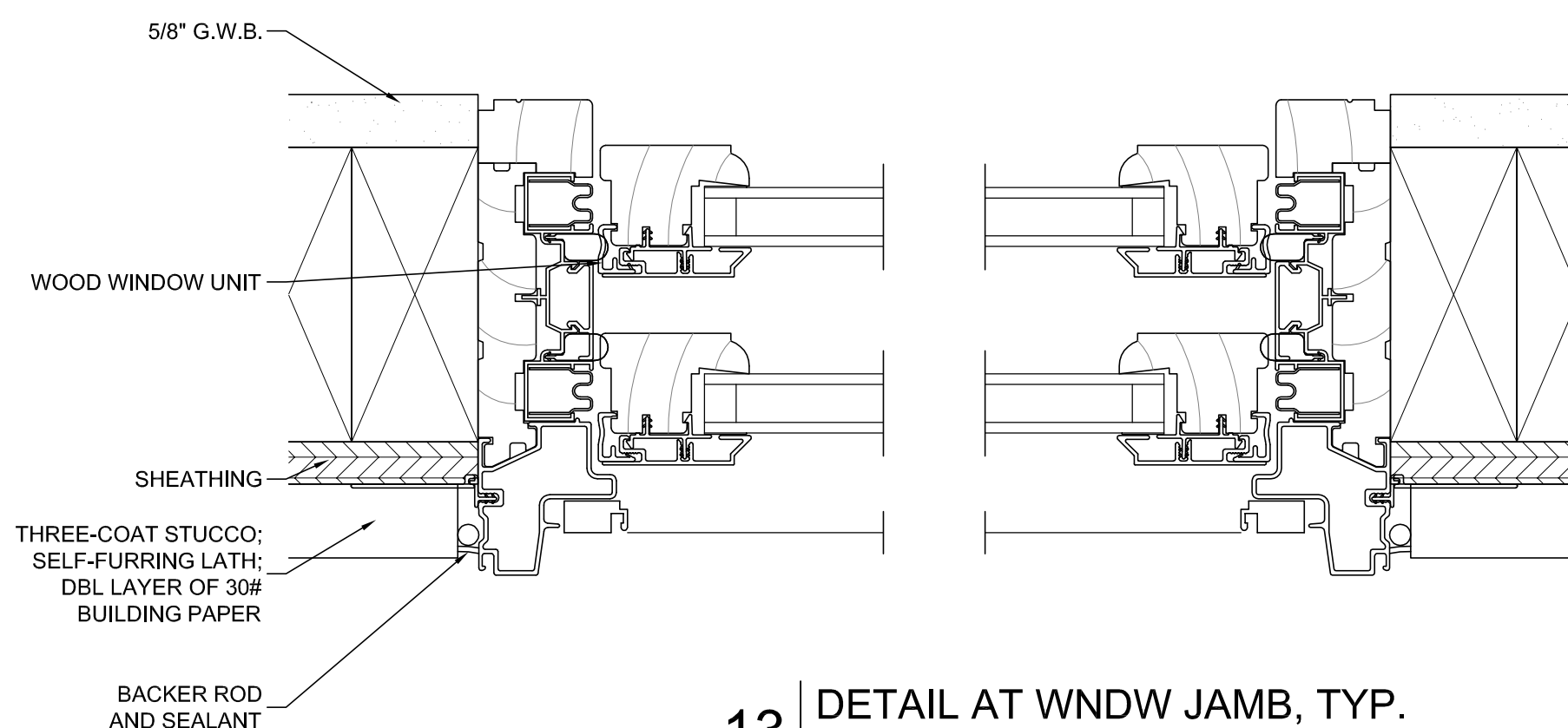
03 | **DETAIL AT FRONT STAIRS, TYP.**  
SCALE: 1 1/2" = 1'-0"




05 | **DETAIL AT REAR STAIRS, TYP.**  
SCALE: 1 1/2" = 1'-0"



09 | **DETAIL AT DOOR JAMB, TYP.**  
SCALE: 3" = 1'-0"



13 | **DETAIL AT WNDW JAMB, TYP.**  
SCALE: 6" = 1'-0"



hatch + ulland owen  
architects

702 San Antonio Street  
Austin, Texas 78701  
T: 512.474.8548  
F: 512.474.8643  
www.huarchitects.com

Civil Engineer:  
Chan & Partners Engineering, LLC  
4319 James Casey St., Ste. 300  
Austin, TX 78745  
(512) 480-8155

Structural Engineer:  
Structures  
1018 West 11th St., Ste. 100  
Austin, TX 78703  
(512) 499-0919

Mechanical, Electrical  
and Plumbing Engineer:  
AYS Engineering, LLC  
203 East Main Street, Ste. 204  
Round Rock, TX 78664  
(512) 961-6835

Consultant:  
.....  
.....  
.....  
.....

The Murphy Hotel

702 San Antonio Street  
Austin, TX 78701

A 24-unit hotel in the heart of  
Downtown Austin.

NOTE: This document, the ideas and design incorporated herein are and shall remain the property of h+u architects. These documents are not to be used or altered, in whole or in part, for other than the original intended use, nor are they to be assigned to any third party without written permission from h+u architects.

NOTE: By act of submitting a bid for the proposed contract, the bidder warrants that the bidder, and all subcontractors and material suppliers he intends to use have carefully and thoroughly reviewed the drawings and specifications and other construction documents and have found them complete and free from any ambiguities and sufficient for the purpose intended. The bidder further warrants that to the best of their or their subcontractors' and material suppliers' knowledge all materials and products specified or indicated herein are acceptable for all applicable codes and authorities.

NOT FOR REGULATORY APPROVAL,  
PERMITTING OR CONSTRUCTION

ISSUE DATES:

DATE	DESCRIPTION
12/03/12	Cert. of Appr.
.....	.....
.....	.....
.....	.....
.....	.....
.....	.....
.....	.....
.....	.....
.....	.....
.....	.....

THE MURPHY HOTEL  
DETAILS

A4.1





Image: San Antonio Street Neighbor



Image: San Antonio Street Neighbor



Image: San Antonio Street Neighbor



Image: San Antonio Street Neighbor



Image: Southern Facade



Image: Eastern Facade (Front)



Image: Northern Facade



Image: Southwestern corner, view from W 7th Street



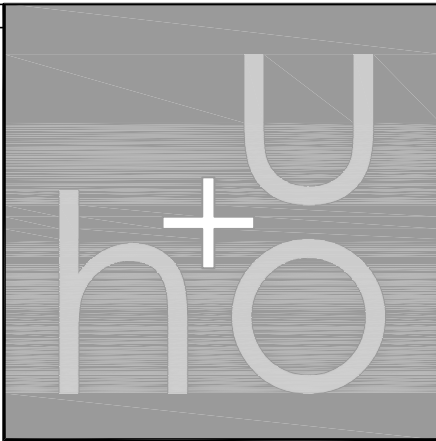
Image: Proposed Addition - Southwestern corner, view from W 7th Street



Image: Proposed Addition from San Antonio Street



Image: Existing Rooftop



hatch+ulland owen  
architects

702 San Antonio Street  
Austin, Texas 78701  
T: 512.474.8548  
F: 512.474.8643

www.huoaarchitects.com

Civil Engineer:  
Chan & Partners Engineering, LLC  
4319 James Casey St., Ste. 300  
Austin, TX 78745  
(512) 480-8155

Structural Engineer:  
Structures  
1018 West 11th St., Ste. 100  
Austin, TX 78703  
(512) 499-0919

Mechanical, Electrical  
and Plumbing Engineer:  
AYS Engineering, LLC  
203 East Main Street, Ste. 204  
Round Rock, TX 78664  
(512) 961-6835

Consultant:

.....  
.....  
.....  
.....

The Murphy Hotel

702 San Antonio Street  
Austin, TX 78701

A 24-unit hotel in the heart of  
Downtown Austin.

NOTE: This document, the ideas and design incorporated herein are and shall remain the property of the architect. These documents are not to be used or altered, in whole or in part, for other than the original intended use, nor are they to be assigned to any third party without written permission from the architect.

NOTE: By act of submitting a bid for the proposed contract, the bidder warrants that the bidder, and all subcontractors and material suppliers he intends to use have carefully and thoroughly reviewed the drawings and specifications and other construction documents and have found them complete and free from any ambiguities and sufficient for the purpose intended. The bidder further warrants that to the best of their or their subcontractors' and material suppliers' knowledge all materials and products specified or indicated herein are acceptable for all applicable codes and authorities.

NOT FOR REGULATORY APPROVAL,  
PERMITTING OR CONSTRUCTION

ISSUE DATES:	
12/03/12	Cert. of Appr.
.....	.....
.....	.....
.....	.....
.....	.....
.....	.....
.....	.....
.....	.....
.....	.....

THE MURPHY HOTEL  
PHOTOGRAPHS

A5.1