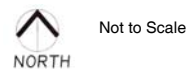
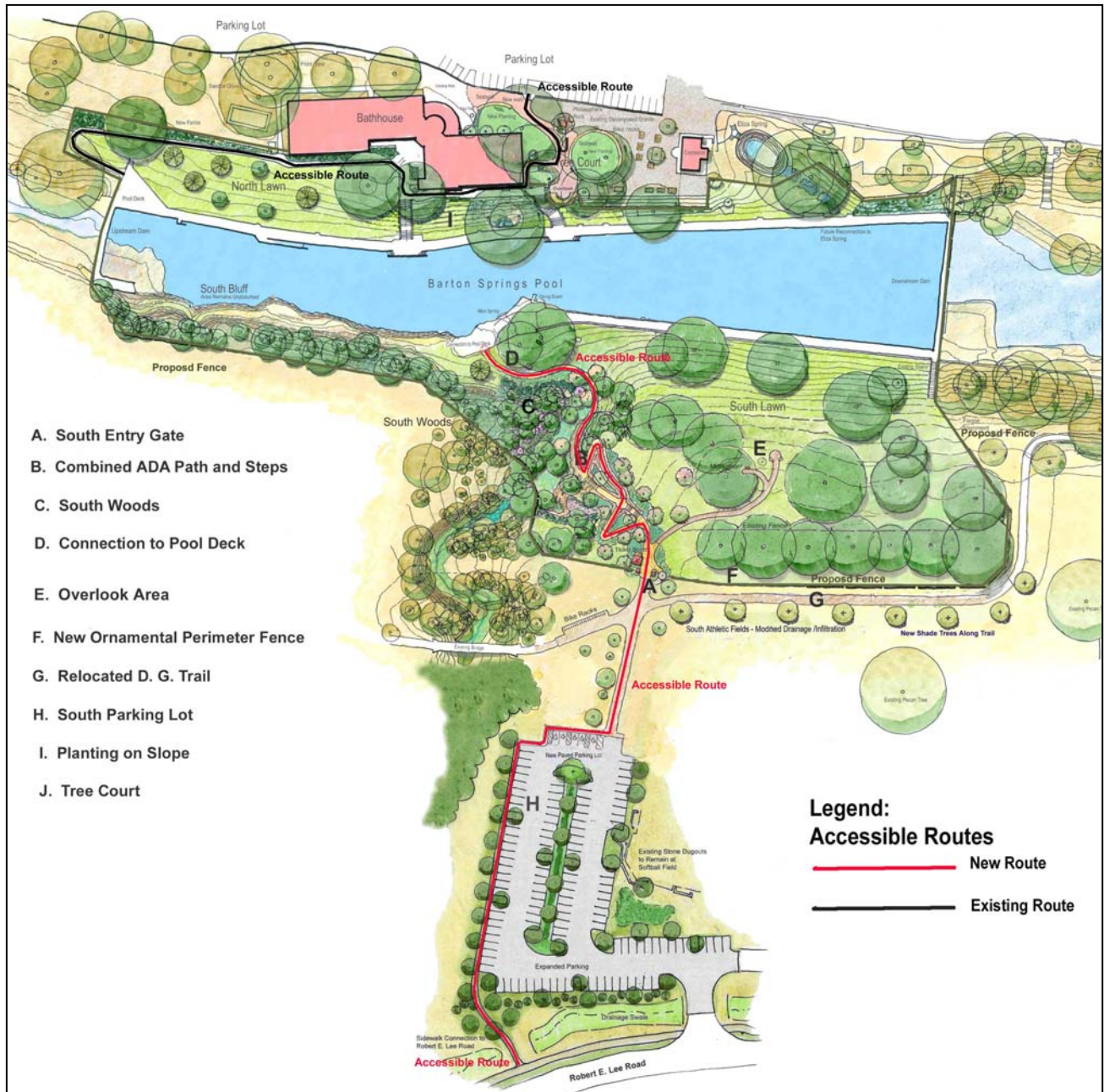


Exhibit A

North and South Sidewalk Improvements



Plan of Sidewalk Improvements and Accessible Route

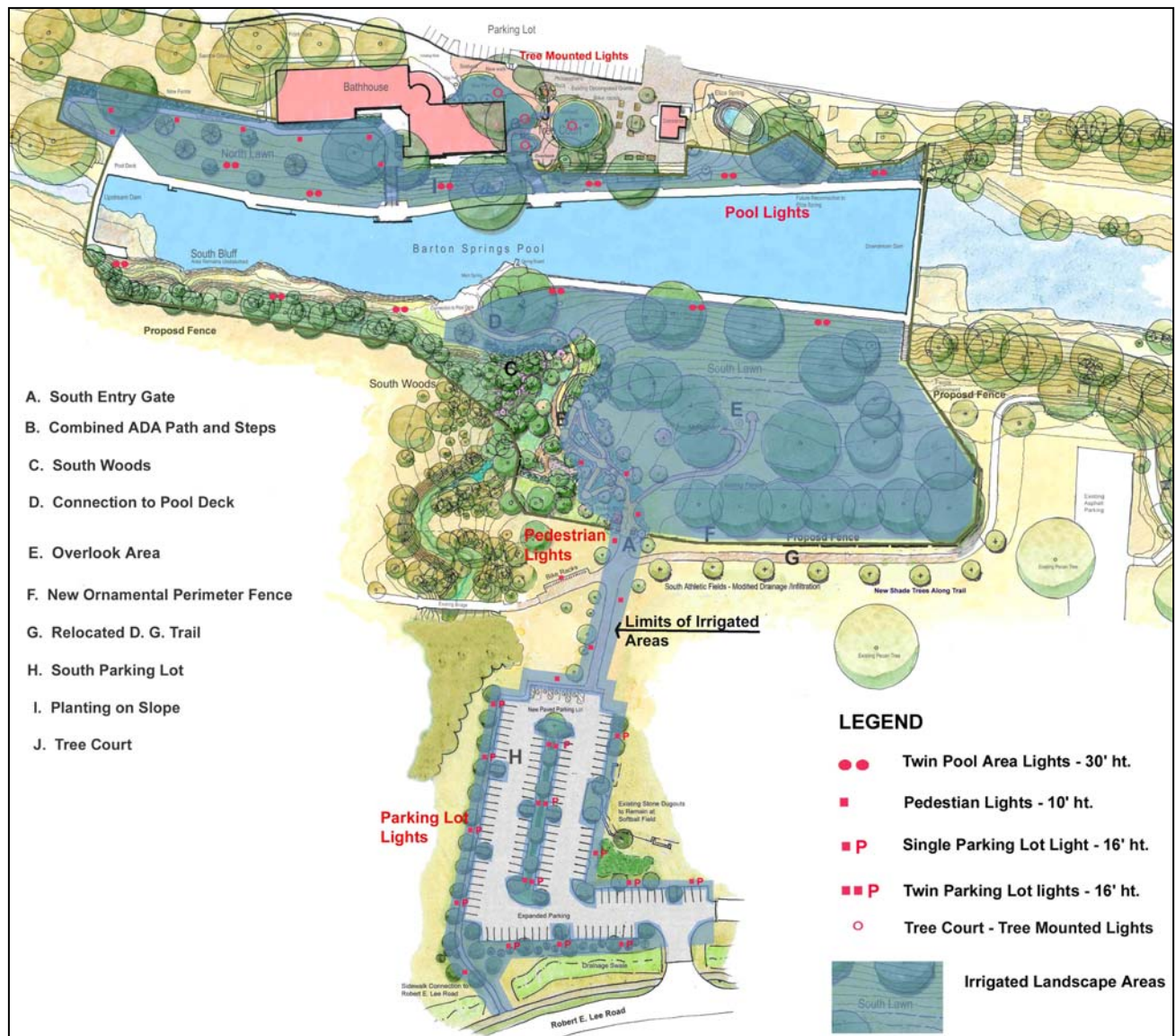
Barton Springs Pool – General Grounds Improvements
 SPC-2012-0104D


Stansberry Engineering Co. *Civil Engineers*
 Larson Burns & Smith, Inc. *Landscape Architects / Planners*

December 6, 2012

Exhibit B

Irrigation and Electrical Improvements




 Not to Scale
 NORTH

Plan of Irrigated Area and Lighting Layout

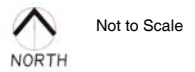
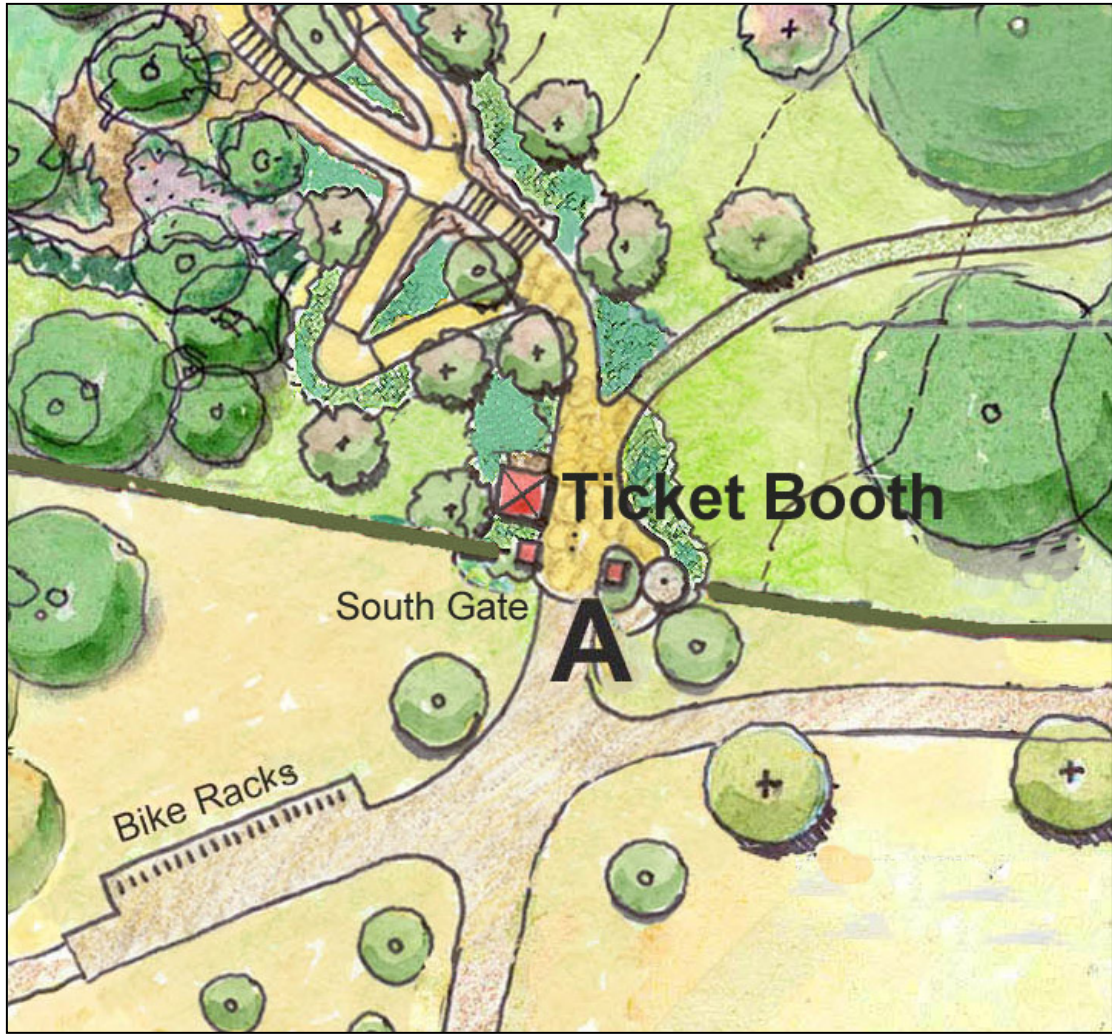
Barton Springs Pool – General Grounds Improvements
 SPC-2012-0104D

Stansberry Engineering Co. *Civil Engineers*
 Larson Burns & Smith, Inc. *Landscape Architects / Planners*

December 6, 2012

Exhibit C

South Gate Ticket Booth Improvements



Plan of Ticket Booth at South Entry Gate



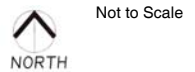
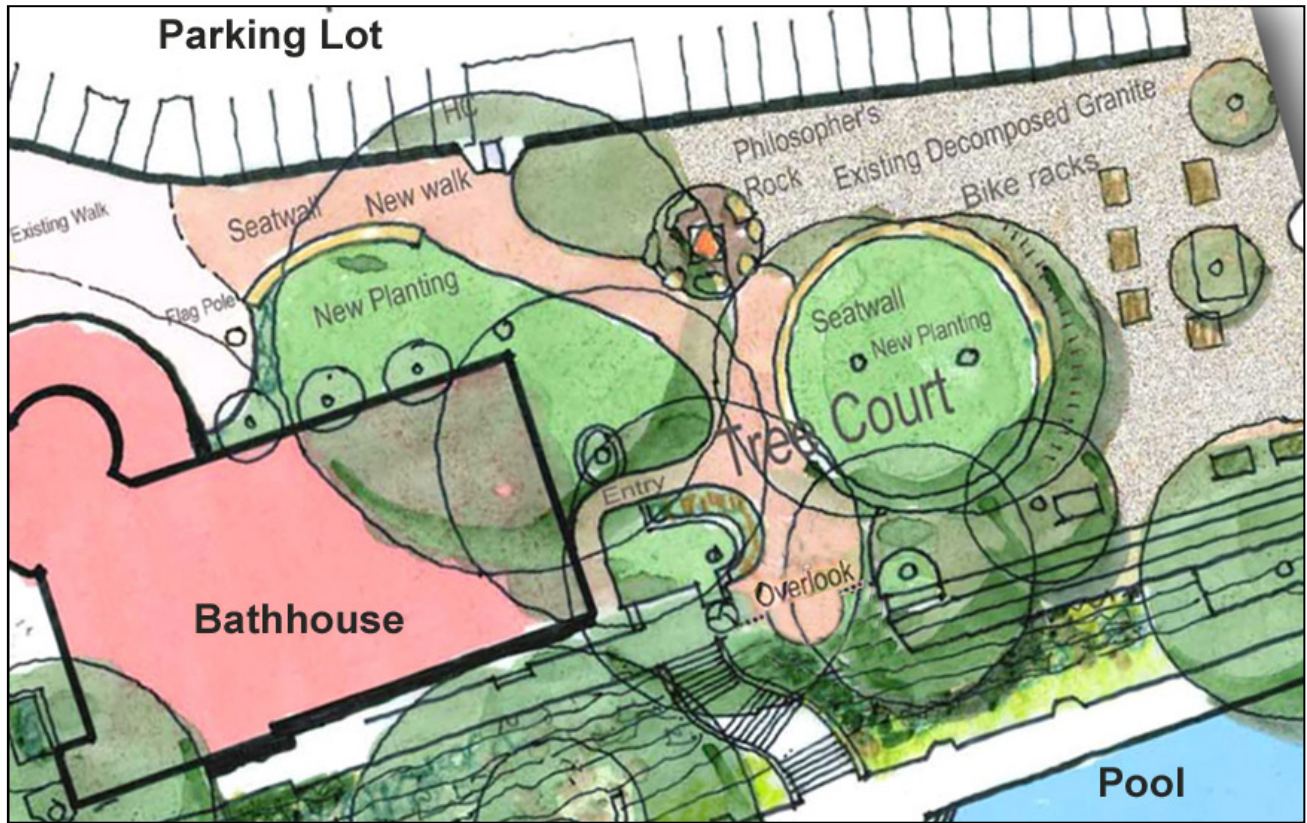
Barton Springs Pool – General Grounds Improvements
SPC-2012-0104D

Stansberry Engineering Co. *Civil Engineers*
Larson Burns & Smith, Inc. *Landscape Architects / Planners*

December 4, 2012

Exhibit D

Tree Court Improvements



Tree Court Plan



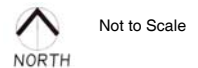
Barton Springs Pool – General Grounds Improvements
SPC-2012-0104D

Stansberry Engineering Co. *Civil Engineers*
Larson Burns & Smith, Inc. *Landscape Architects / Planners*

December 4, 2012

Exhibit E

South Parking Lot Water Quality Improvements



Plan of Vegetated Filter Strip Area

Barton Springs Pool – General Grounds Improvements
SPC-2012-0104D

Stansberry Engineering Co. *Civil Engineers*
Larson Burns & Smith, Inc. *Landscape Architects / Planners*

December 4, 2012

**Barton Springs Pool - General Grounds Improvements
Codes & Ordinances Subcommittee
December 18, 2012**

Ordinance Amendment Request

Site Specific Amendment to Section 25-8-514 (*Pollution Prevention Required*) to allow construction in the critical water quality zone of:

- A. Sidewalks located along the eastern edge of the south lawn of the pool to provide an accessible route to the pool. Reference EXHIBIT A.
- B. Construction of underground irrigation and electrical utilities. Reference EXHIBIT B.
- C. A ticket booth at the south entry gate. Reference EXHIBIT C.
- D. An overlook deck, new sidewalk and hardscape within the “tree court” area adjacent to the existing bathhouse to improve the soil conditions for the health of the heritage pecan trees. Reference EXHIBIT D.
- E. A portion of a vegetated filter strip located east of the existing gravel parking lot on the south side of the pool providing water quality for the expanded parking lot. Reference EXHIBIT E.

Site specific amendment to Section 25-8-514 (*Pollution Prevention Required*) to allow impervious cover in excess of 15 percent.

- A. The existing impervious cover within the Barton Creek watershed of Zilker Park is 44.42 percent which exceeds the maximum allowed of 15 percent. The proposed improvements described above will increase the impervious cover by 0.91 percent creating a total impervious cover of 45.33 percent.

Variance Request (The following items require a variance and are listed for reference only.)

Variance from Section 25-8-482 (*Critical Water Quality Zone*) to allow construction in the critical water quality zone of:

- A. Sidewalks located along the eastern edge of the south lawn of the pool to provide an accessible route to the pool. Reference EXHIBIT A.
- B. Construction of underground irrigation and electrical utilities. Reference EXHIBIT B.
- C. A ticket booth at the south entry gate. Reference EXHIBIT C.
- D. An overlook deck, new sidewalk and hardscape within the “tree court” area adjacent to the existing bathhouse to improve the soil conditions for the health of the heritage pecan trees. Reference EXHIBIT D.
- E. A portion of a vegetated filter strip located east of the existing gravel parking lot on the south side of the pool providing water quality for the expanded parking lot. Reference EXHIBIT E.

Variance from Section 25-8-483 (*Water Quality Transition Zone*) to allow construction in the water quality transition zone of:

- A. Concrete parking facility to improve and expand the existing gravel parking lot located on the south side of Barton Springs pool. Reference EXHIBIT E.
- B. Sidewalk providing an accessible route from the Robert E. Lee Right of Way and the parking lot on the south side of Barton Springs pool to the south entry to the pool. Reference EXHIBIT E.