

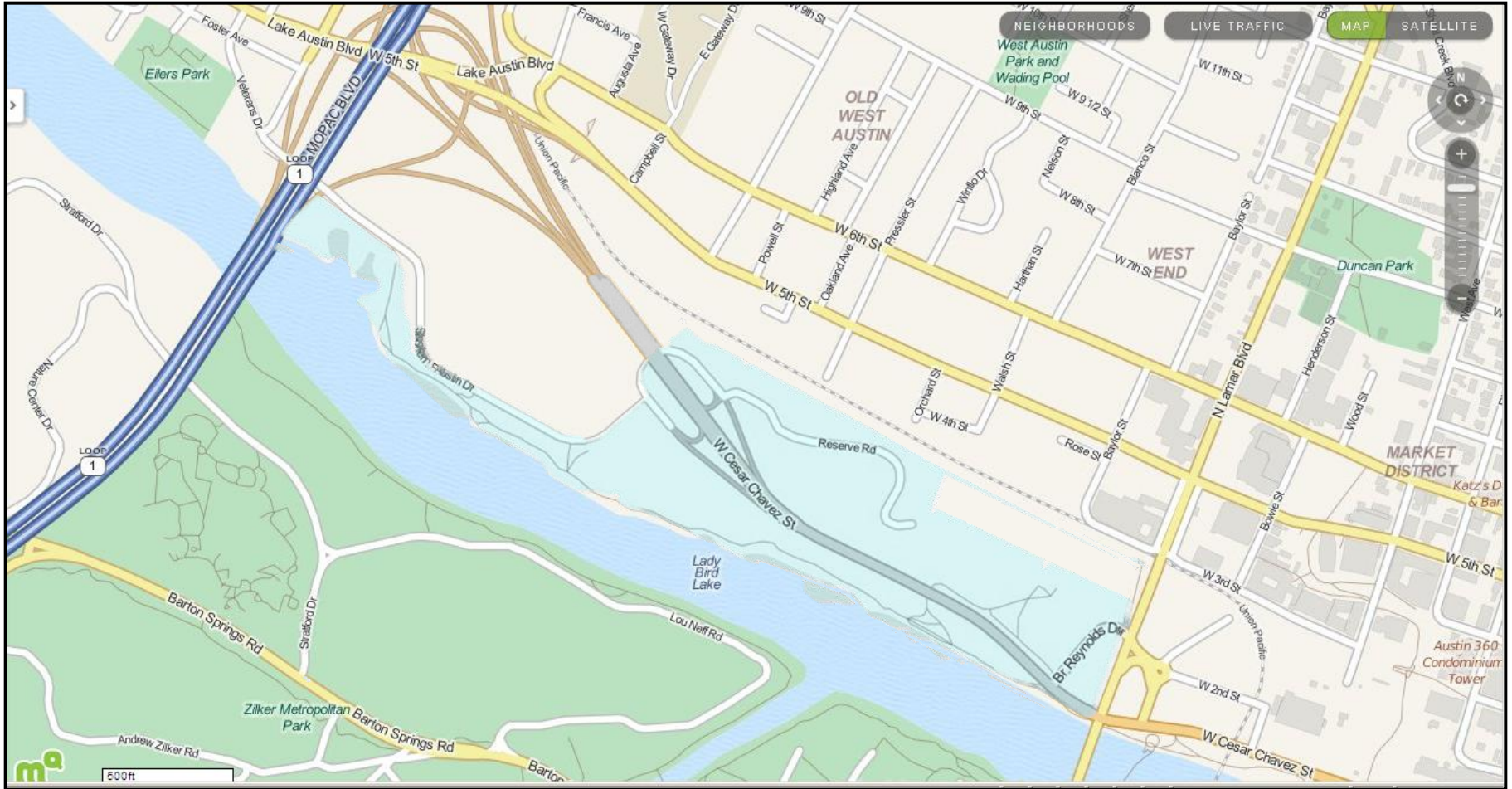
# Concepts for Pressler Road Extension

## Parks & Recreation Board



Gary W. Schatz, P.E., PTOE  
Austin Transportation Department  
January 22, 2013

# Project Area



(Image from MapQuest)

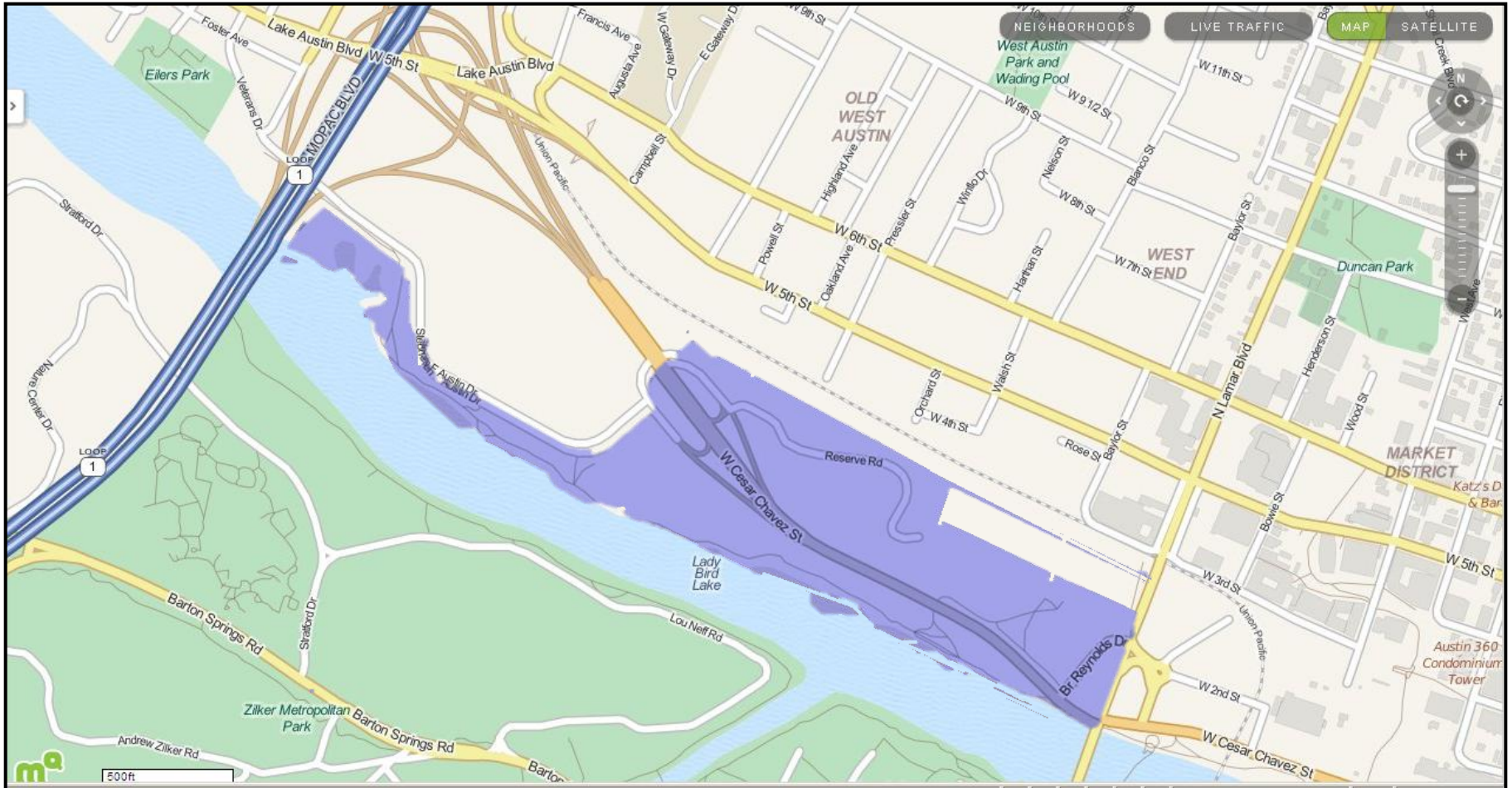
# Issues

- Lamar Beach
  - Isolated from the community
  - Need for Master Planning
  - Lack of parking
- Area Connectivity
  - Bicyclists & Pedestrians
  - MoPac Managed Lanes
- Community
  - Train Horns
  - Proposed development isolated
  - Need for context sensitive designs

# Improvement Concepts

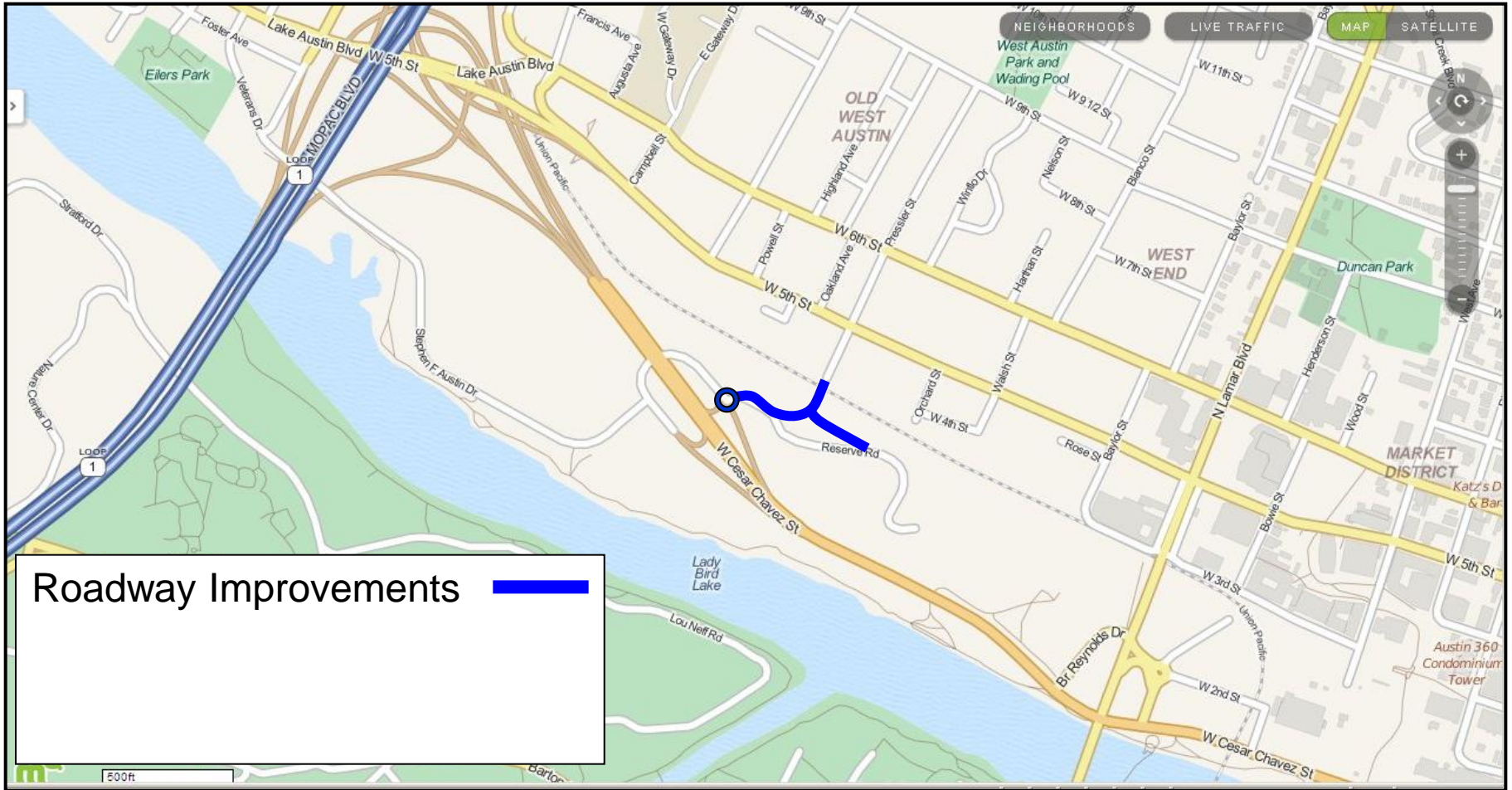
- Pressler Road Extension
  - Context-sensitive design
  - Serves all roadway users
  - Provides area connectivity
  - Allows for creation of railroad quiet zone
  - Complimentary to future master planning efforts
  - Supports partnership with future development
  - Enables future parking management strategies

# Pressler Road Improvements



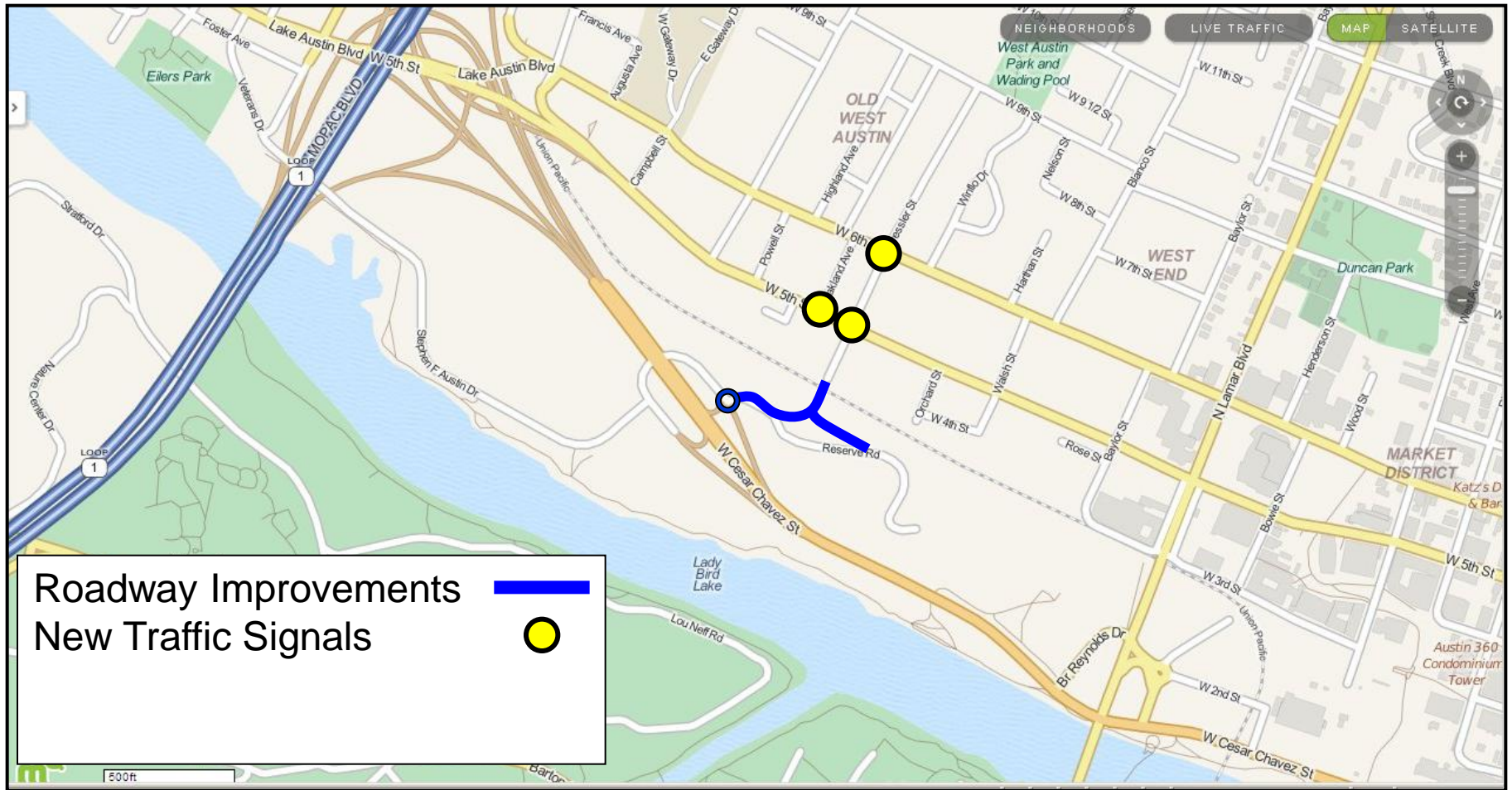
(Image from MapQuest)

# Pressler Road Improvements



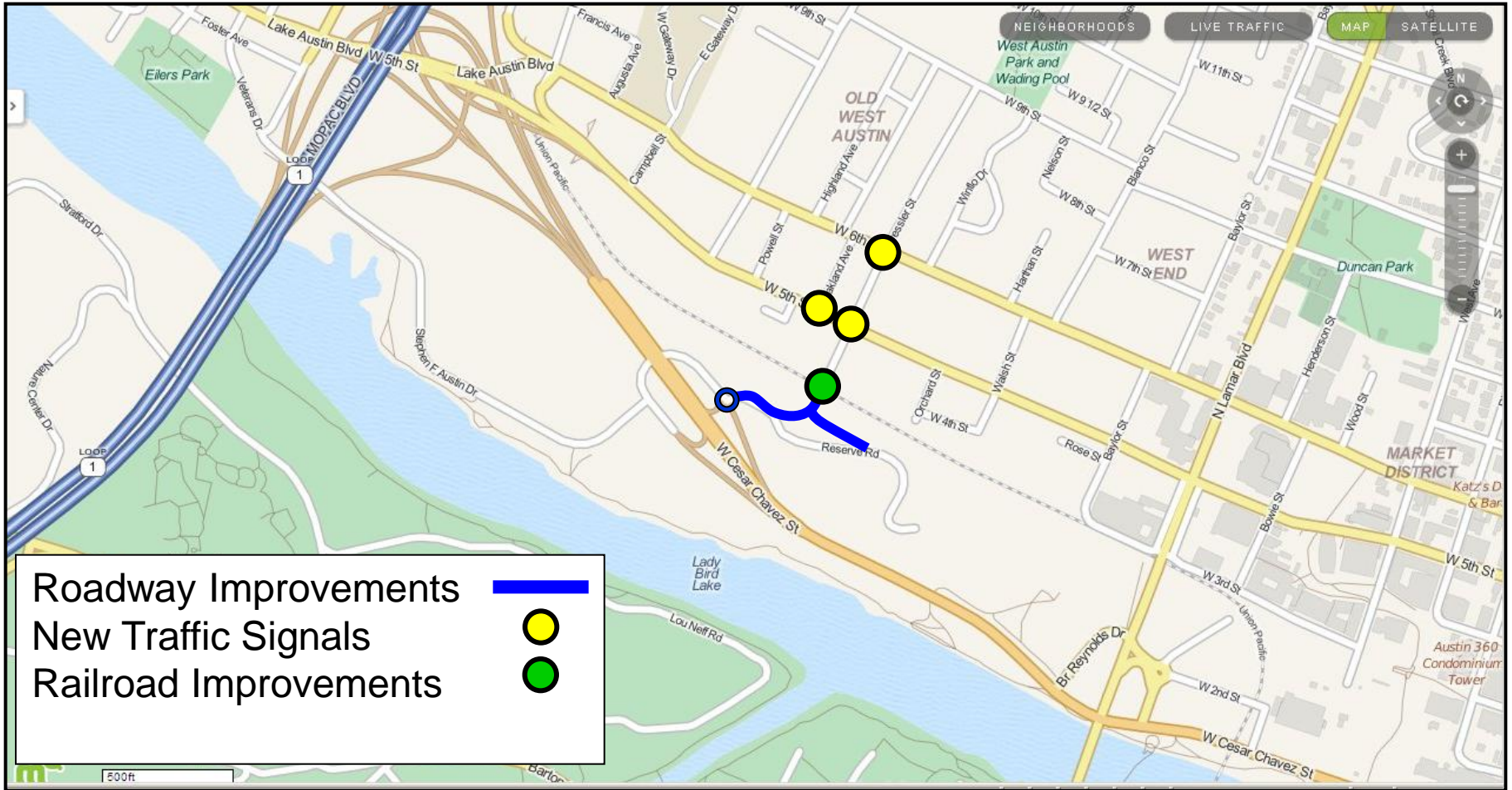
(Image from MapQuest)

# Pressler Road Improvements



(Image from MapQuest)

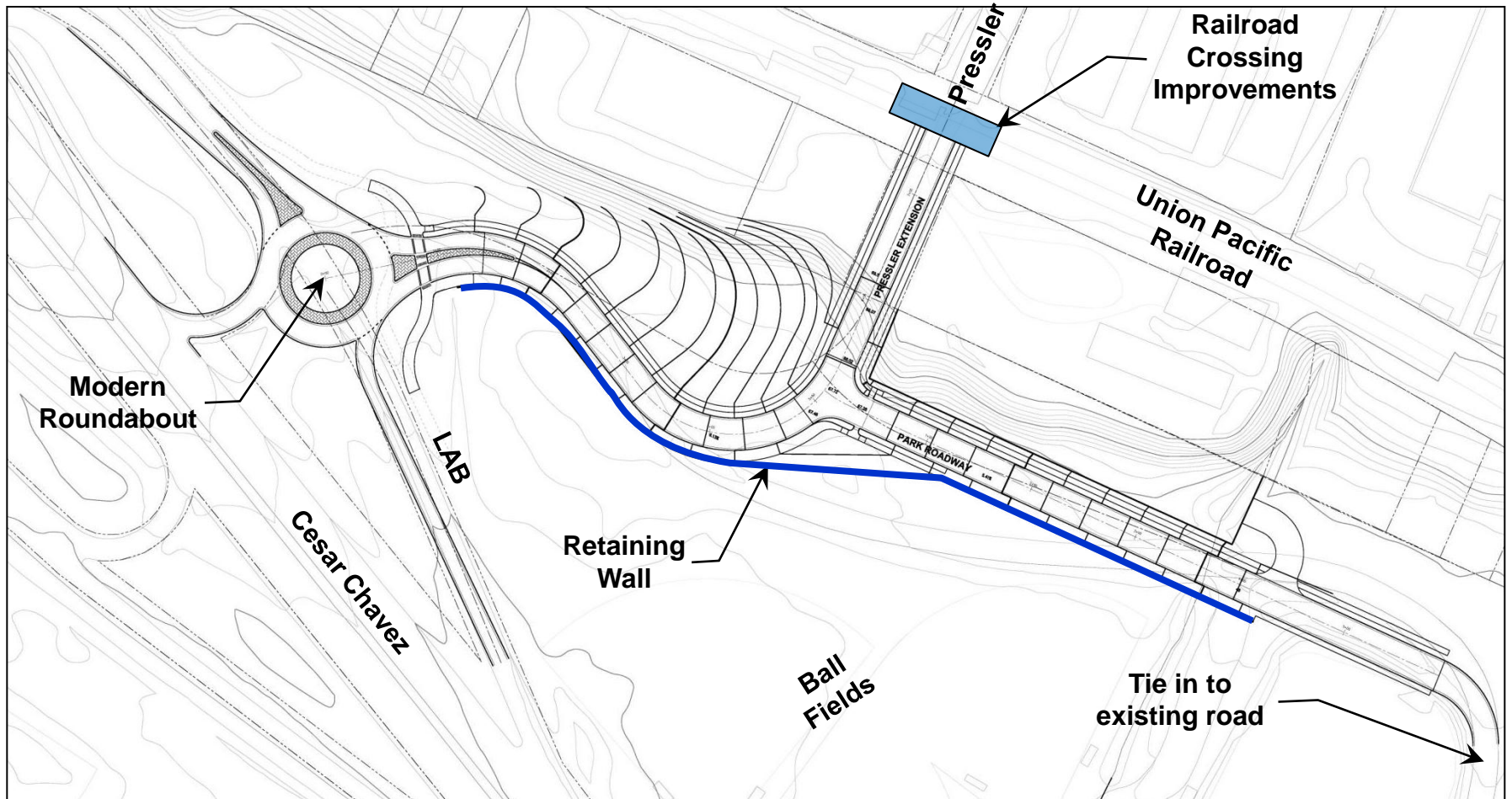
# Pressler Road Improvements



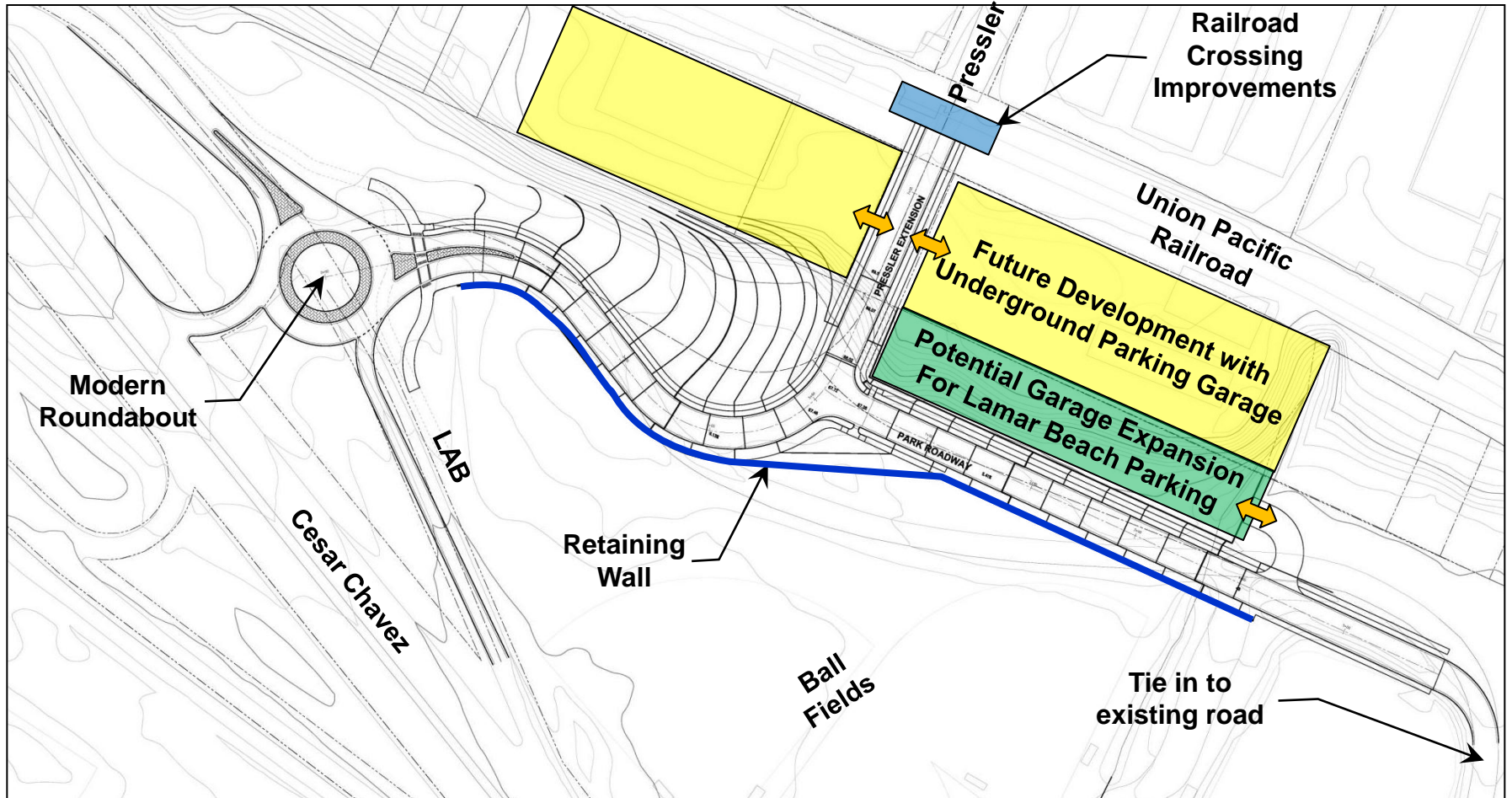
(Image from MapQuest)



# Pressler Road Improvements



# Pressler Road Improvements

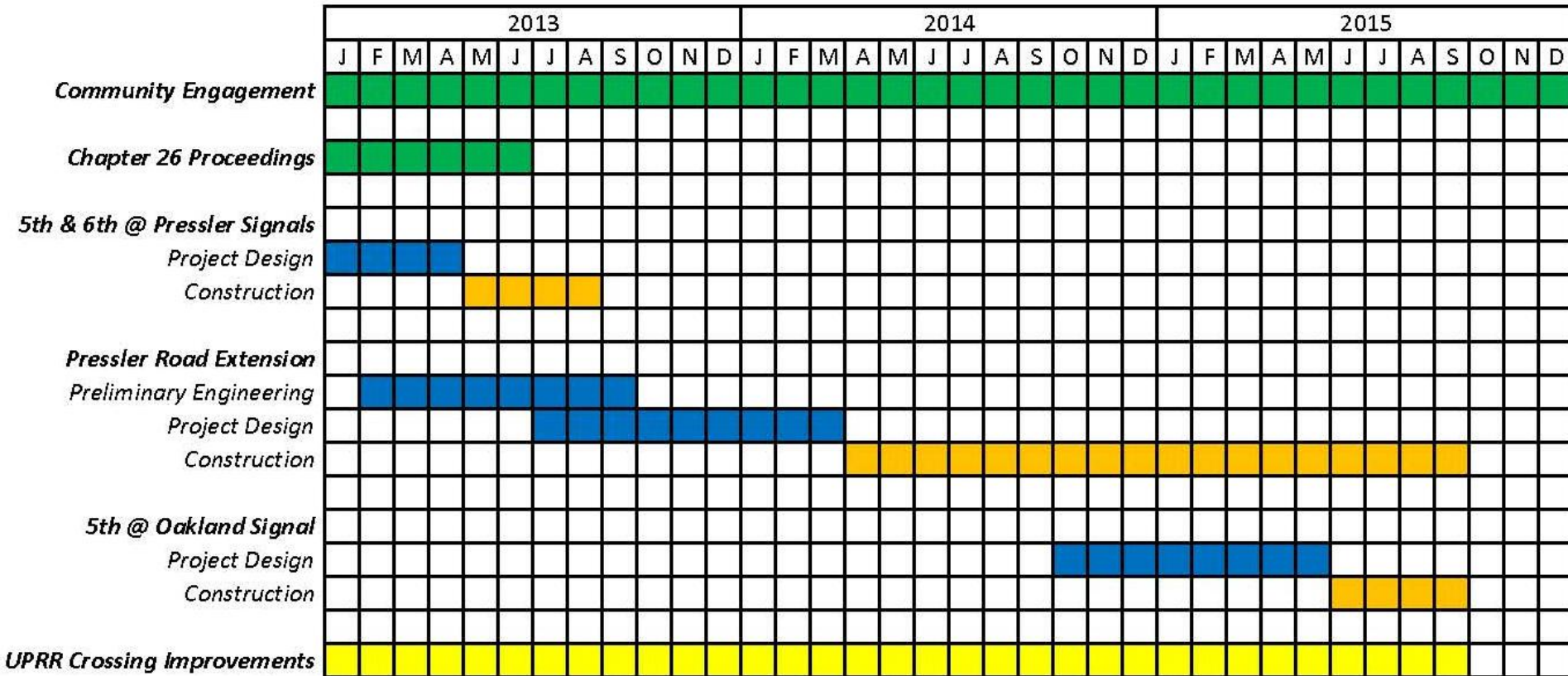


# Implementation Strategy

- Funding
  - 5<sup>th</sup> & 6<sup>th</sup> @ Pressler Signals \$0.2M (2010 Bond)
  - Pressler Extension \$3.0M (2012 Bond)
  - 5<sup>th</sup> @ Oakland Signal \$0.1M (2012 Bond)
  - UPRR Crossing \$0.5M (2012 Bond)
- Total Budget \$3.7M

# Implementation Strategy

- Preliminary Timelines



# Implementation Strategy

- Next Steps
  - Continue Chapter 26 process
  - Continue refining implementation strategy
  - Engage design engineer
  - Engage UPRR for crossing improvements
  - Presentation to UTC 2/12/13
  - Meetings with stakeholders at milestones/upon request

# Pressler Road Extension Benefits

- Lamar Beach
  - Connection to the community
  - Complimentary to future master planning efforts
  - Enables future parking management strategies
- Area Connectivity
  - Bicyclists & Pedestrians
  - MoPac Managed Lanes
- Community
  - Allows for future Railroad Quiet Zone
  - Supports partnership with future development
  - Context sensitive designs

# Concepts for Pressler Road Extension

## Parks & Recreation Board



Gary W. Schatz, P.E., PTOE  
Austin Transportation Department  
January 22, 2013