



---

# Land, Facilities and Programs Committee Parks and Recreation Board Stephen F. Austin Statue

---

City of Austin

Parks and Recreation Department

February 11, 2013





# PARD Donation Policy

- Donation Policy followed: *AIPP Projects, Donations, Commissions and Temporary Exhibitions of Outdoor Visual Art Work on Austin Parks and Recreation Property* adopted in April 18, 2003
- States PARD policy and procedures for
  - CIP Projects
  - Donations
  - Commissions
  - Temporary Exhibitions
- Donation Policy Followed
- Conducted departmental review per policy with South Austin Civic Club (donor)



# Departmental Committee Considerations



- Appropriateness
- Safety and controls
- Security of artwork
- Installation and maintenance
- Provides tangible benefit (education, aesthetic, etc.)
- COA revising policy to address Artwork Donation Policy:
  - Artwork Donation Review Process
  - Artwork Donation Review Criteria
  - Exceptions to this Policy
  - Commissioning New Works of Art for Town Lake Park and Trail
- Revised policy to incorporate PARD Policy and Procedures for donated artwork and to provide a city-wide comprehensive strategy for donated art work





# History

- Per Policy assembled review committee
- Met with the South Austin Civic Club on May 24, 2012 to review donation and provide response
- Considerations provided to donor
  - Town Lake Metro Park currently in Master Plan process
  - 'City of Austin Artwork Donation Policy and Application' states that all artwork on Town Lake Metro Park must be commissioned
- Donation as provided prohibited due to established policy
- Alternate locations provided to donor, locations where not acceptable to the South Austin Civic Club





# Original Staff Proposed Location



Site 1: Original Location at South Austin Island



Site 2: The Old Bakery and Emporium



# Original Staff Proposed Location



Site 3: South Austin Activity Center



Site 4: Mary Moore Searight Park





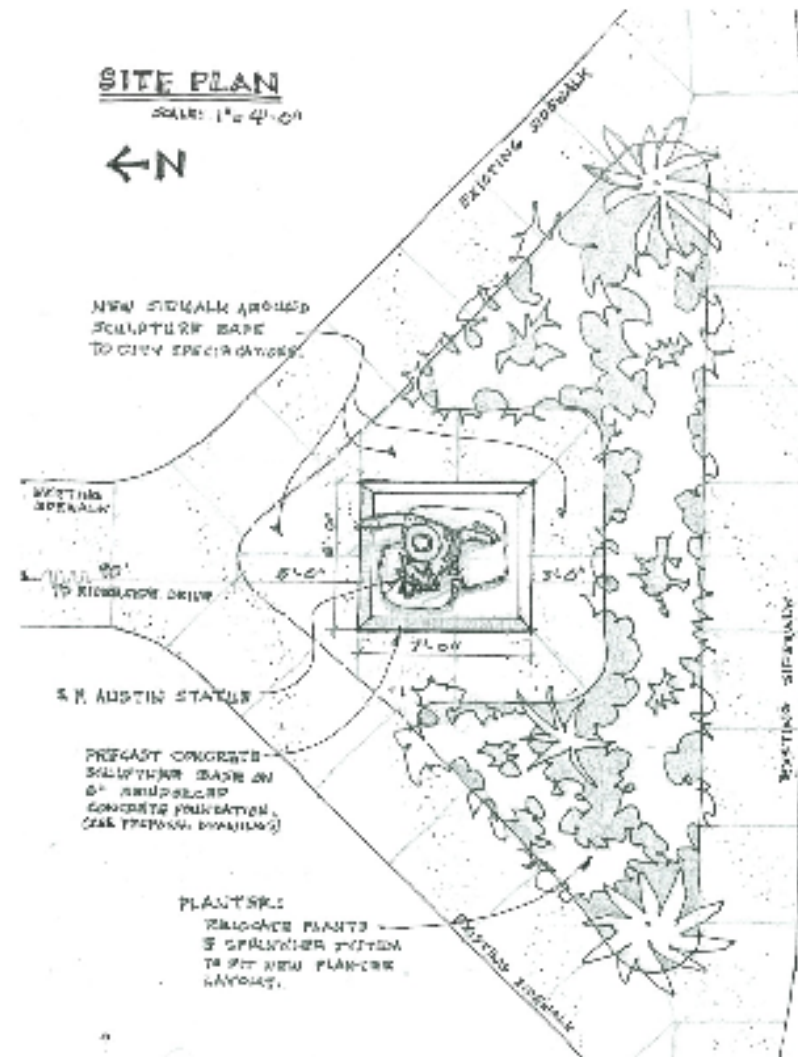


# Proposed Master Plan Elements



★ Proposed location from South Austin Civic Club



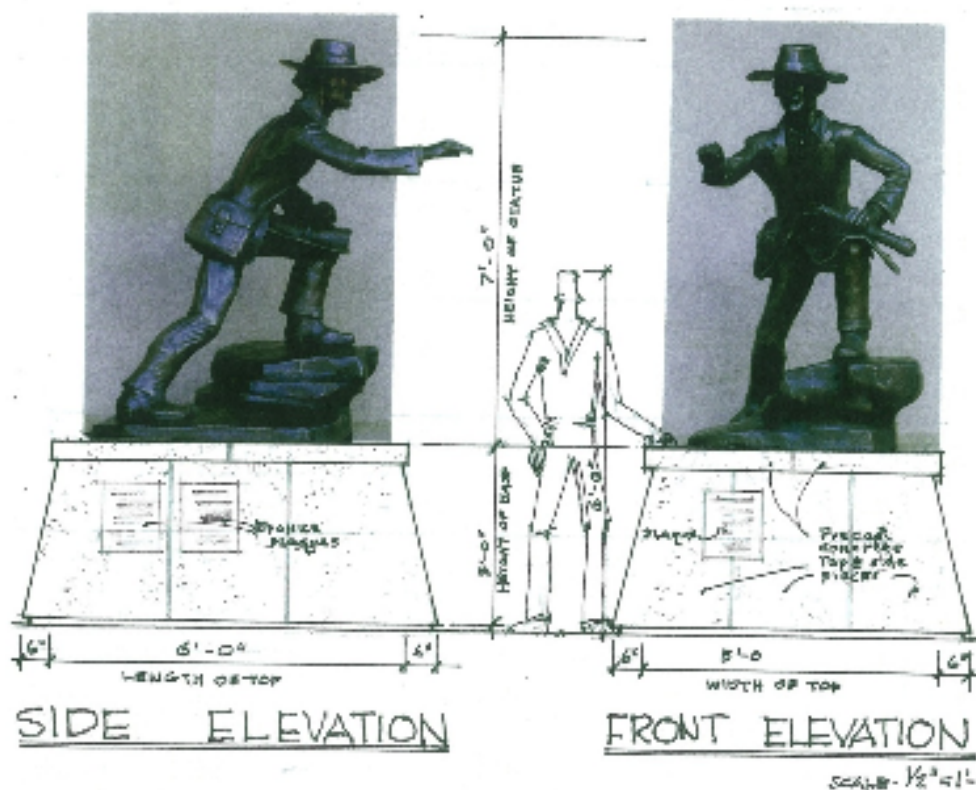






# Statue Images

As provided by the South Austin Civic Club



## Project Data:

### Production Process :

- (1) Maquette enlarged in styrofoam to size desired.
- (2) Artist refines blow-up and sculpts final statue.
- (3) Foundry makes molds & wax patterns; casts, & finishes statue.
- (4) Bronze base fabricated. (5) Statue delivered and set.

### Materials :

- (1) Statue cast in allacon bronze.
- (2) Masonry base with cast concrete top and sides.

**Finish:** Statue - "Statuary Green". Statue sealed and waxed.

**Bronze Plaque:** Text to be furnished. Foundry to cast.

### Foundry Work:

- (1) Maquette production - Hall's Studio Foundry, Driftwood, Texas.
- (2) Statue production - Deep in the Heart Foundry, Bastrop, Texas.

**Shipping & Installation:** Deep in the Heart Foundry.





# CIP Staff Proposed Location

## Option 1



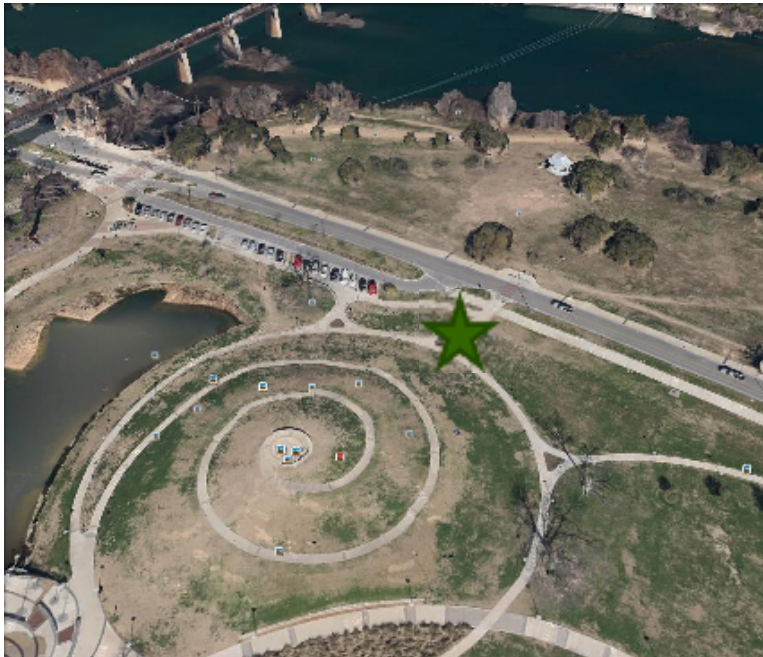
Adjacent to Trail east of 1<sup>st</sup> Street Bridge







# CIP Staff Proposed Location Option 2



At the base of 'Doug Sahm Hill'





# CIP Staff Proposed Location Option 3



Near the entrance to Pfluger Bridge







## Next Steps

- ❑ Provide recommendations to Parks and Recreation Board for proposed location of donated art piece
- ❑ Forward donation to Arts Commission for presentation and action

