

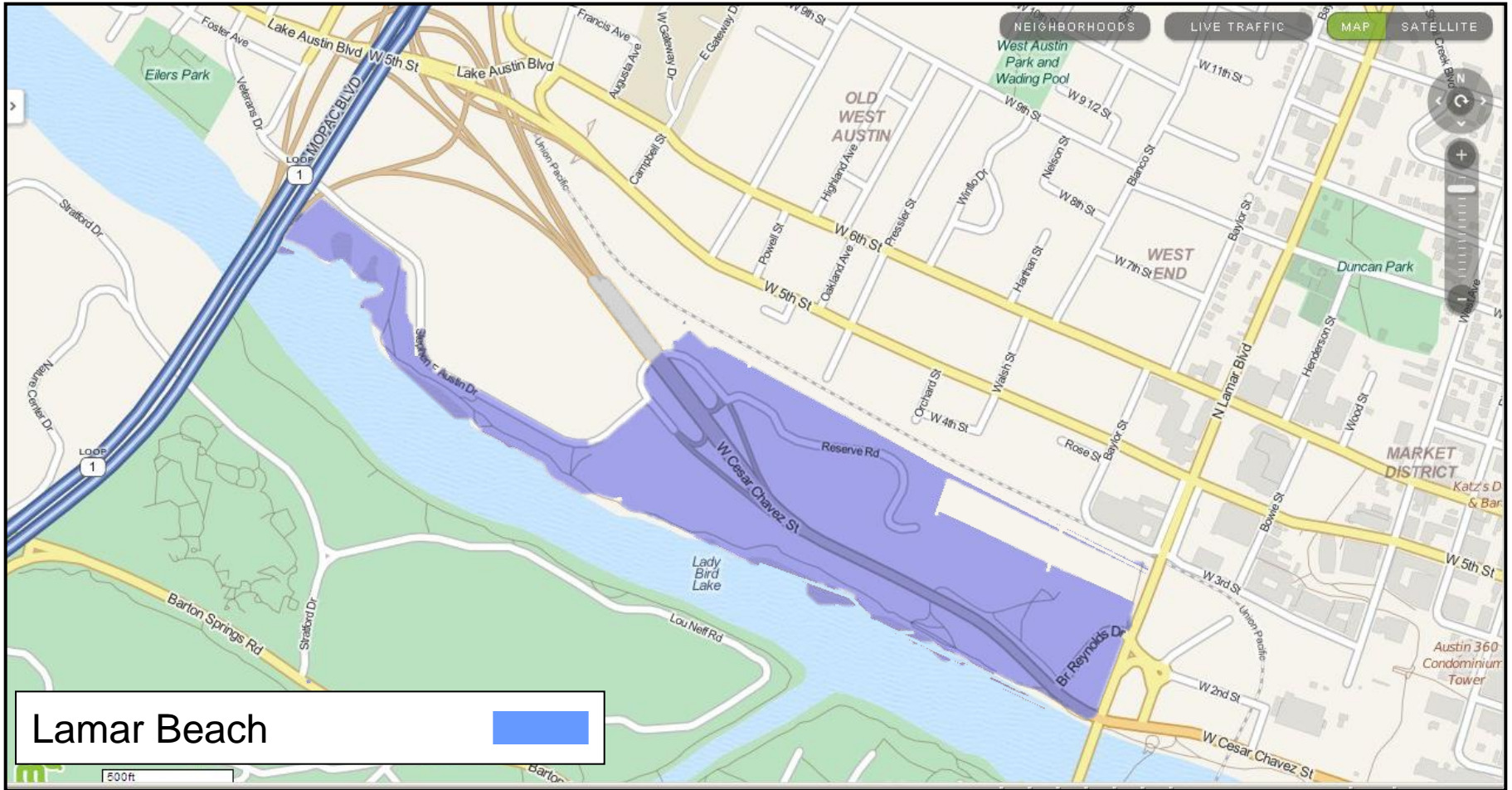
Concepts for Pressler Road Extension

Parks & Recreation Board



Gary W. Schatz, P.E., PTOE
Austin Transportation Department
January 22, 2013

Project Area



(Image from MapQuest)

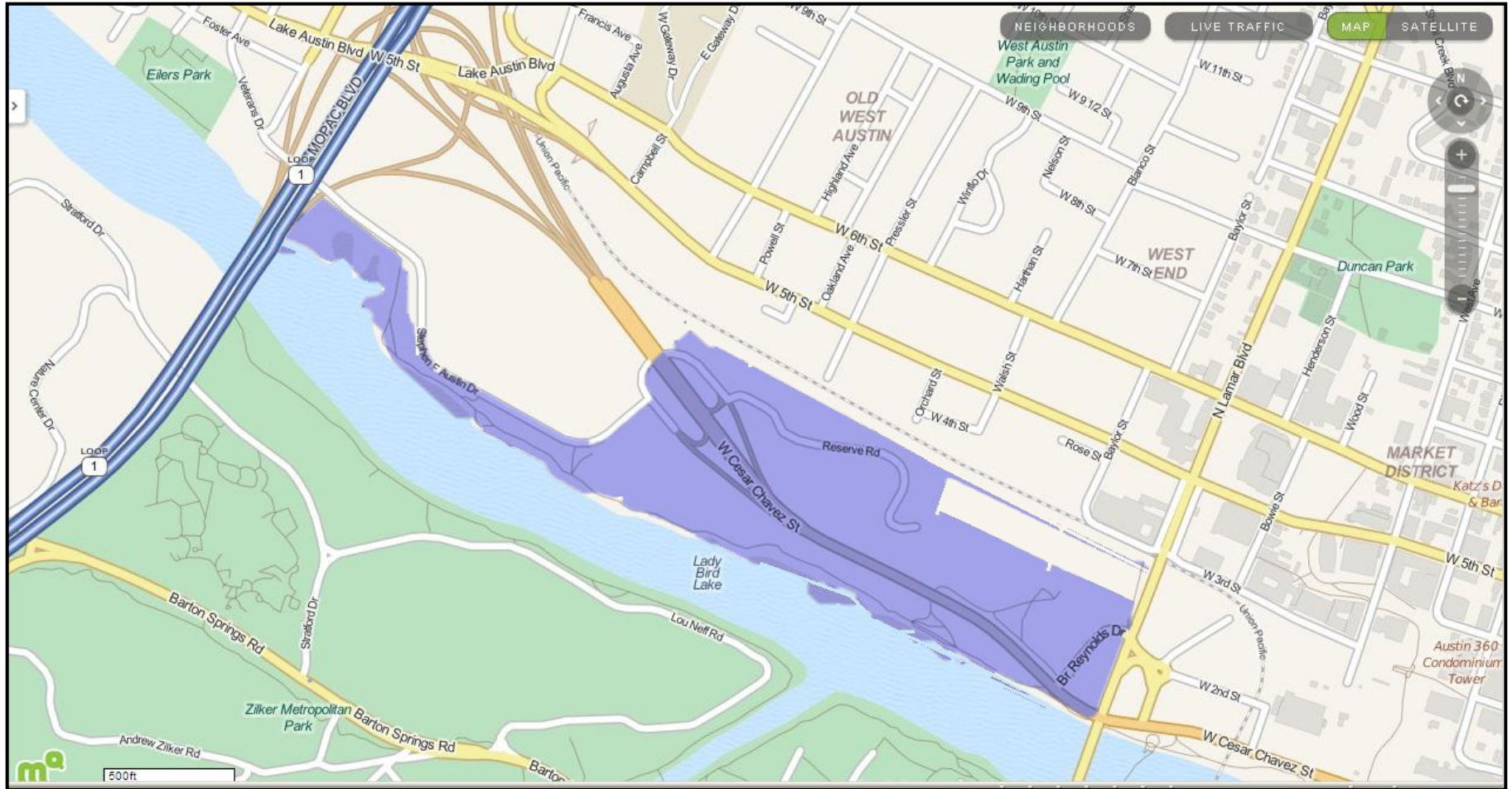
Issues

- Lamar Beach
 - Isolated from the community
 - Need for Master Planning
 - Lack of parking
- Area Connectivity
 - Bicyclists & Pedestrians
 - MoPac Managed Lanes
- Community
 - Train Horns
 - Proposed development isolated
 - Need for context sensitive designs

Improvement Concepts

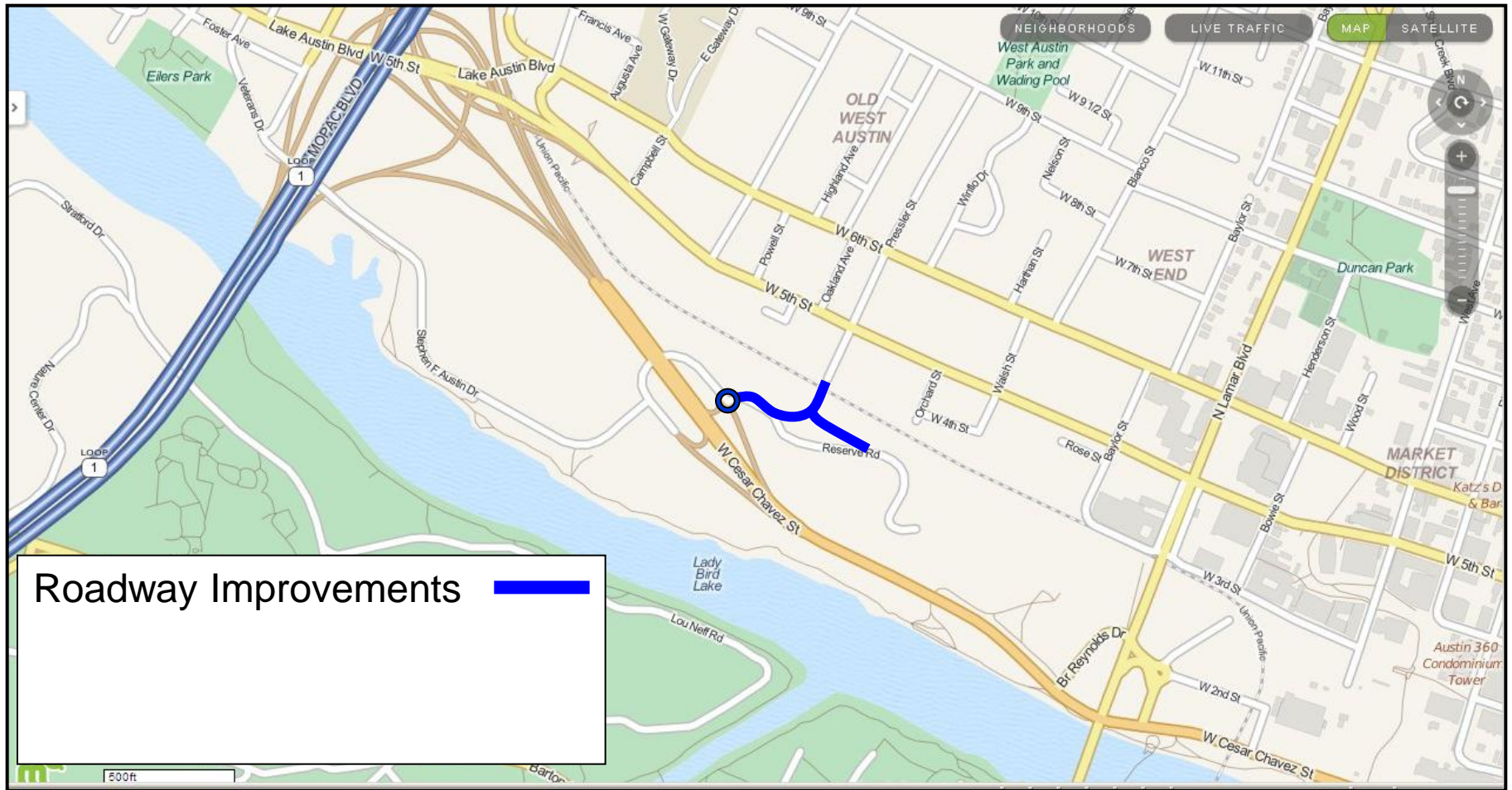
- Pressler Road Extension
 - Context-sensitive design
 - Serves all roadway users
 - Provides area connectivity
 - Allows for creation of railroad quiet zone
 - Complimentary to future master planning efforts
 - Supports partnership with future development
 - Enables future parking management strategies

Pressler Road Improvements



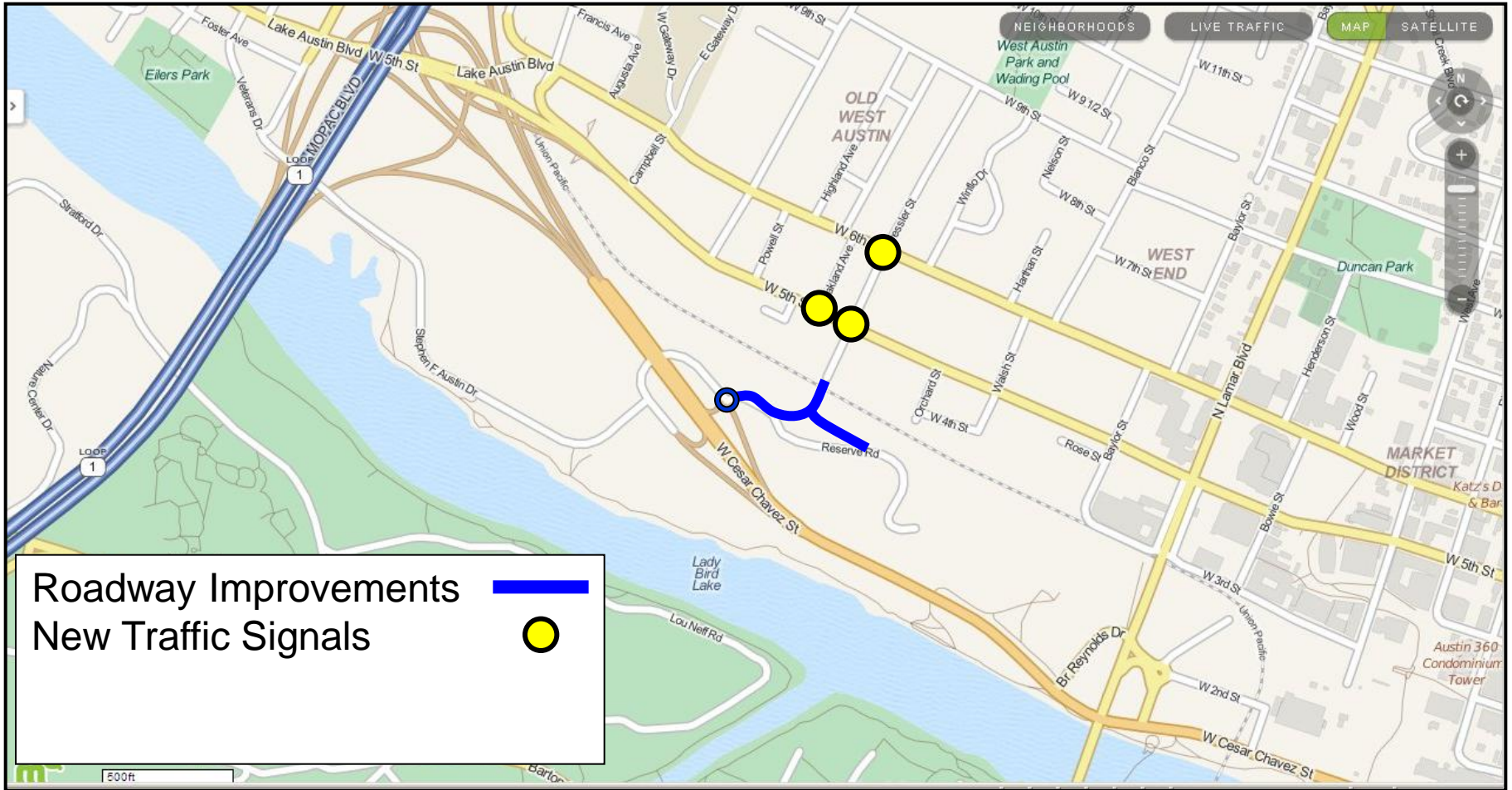
(Image from MapQuest)

Pressler Road Improvements



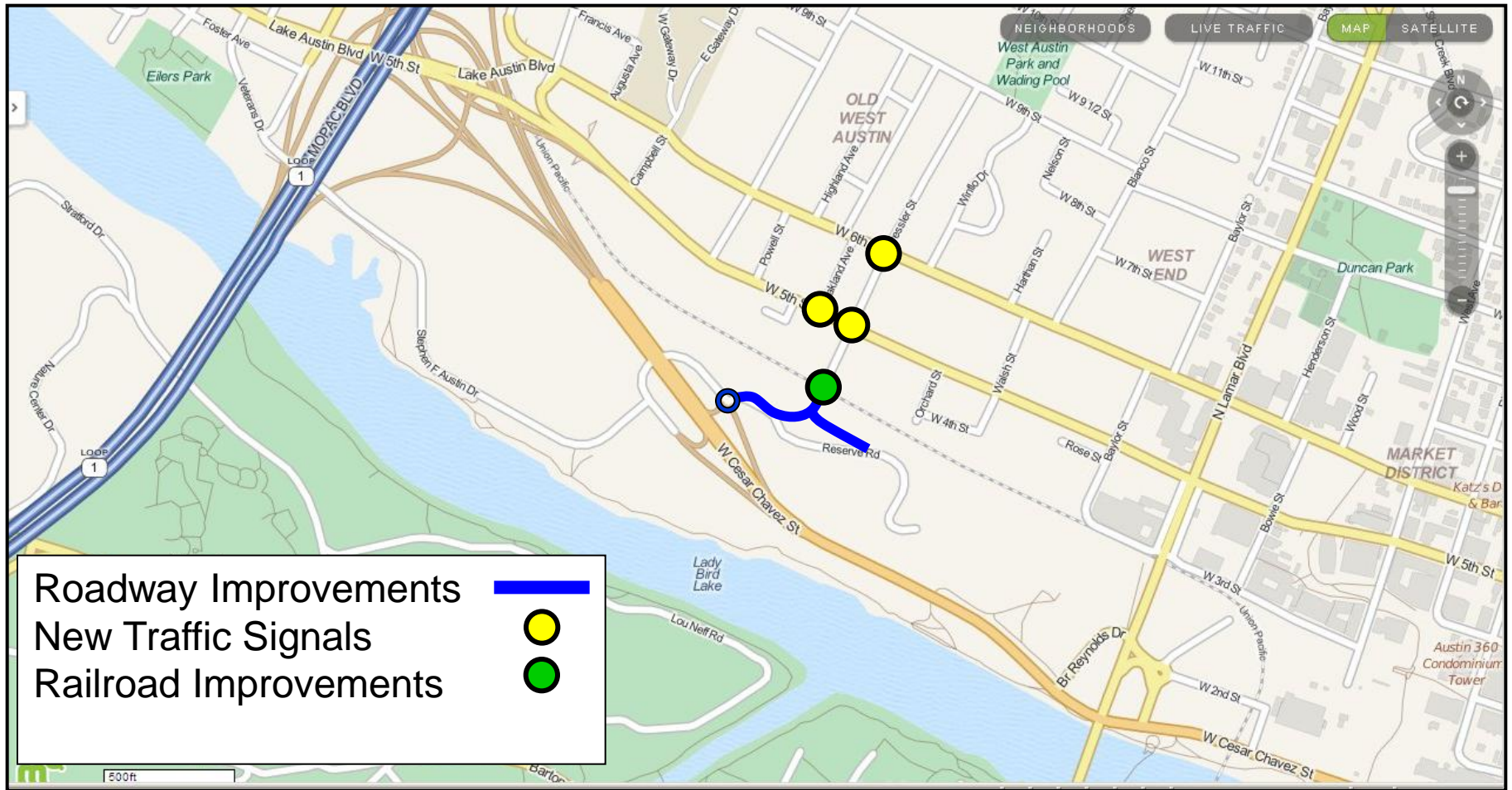
(Image from MapQuest)

Pressler Road Improvements



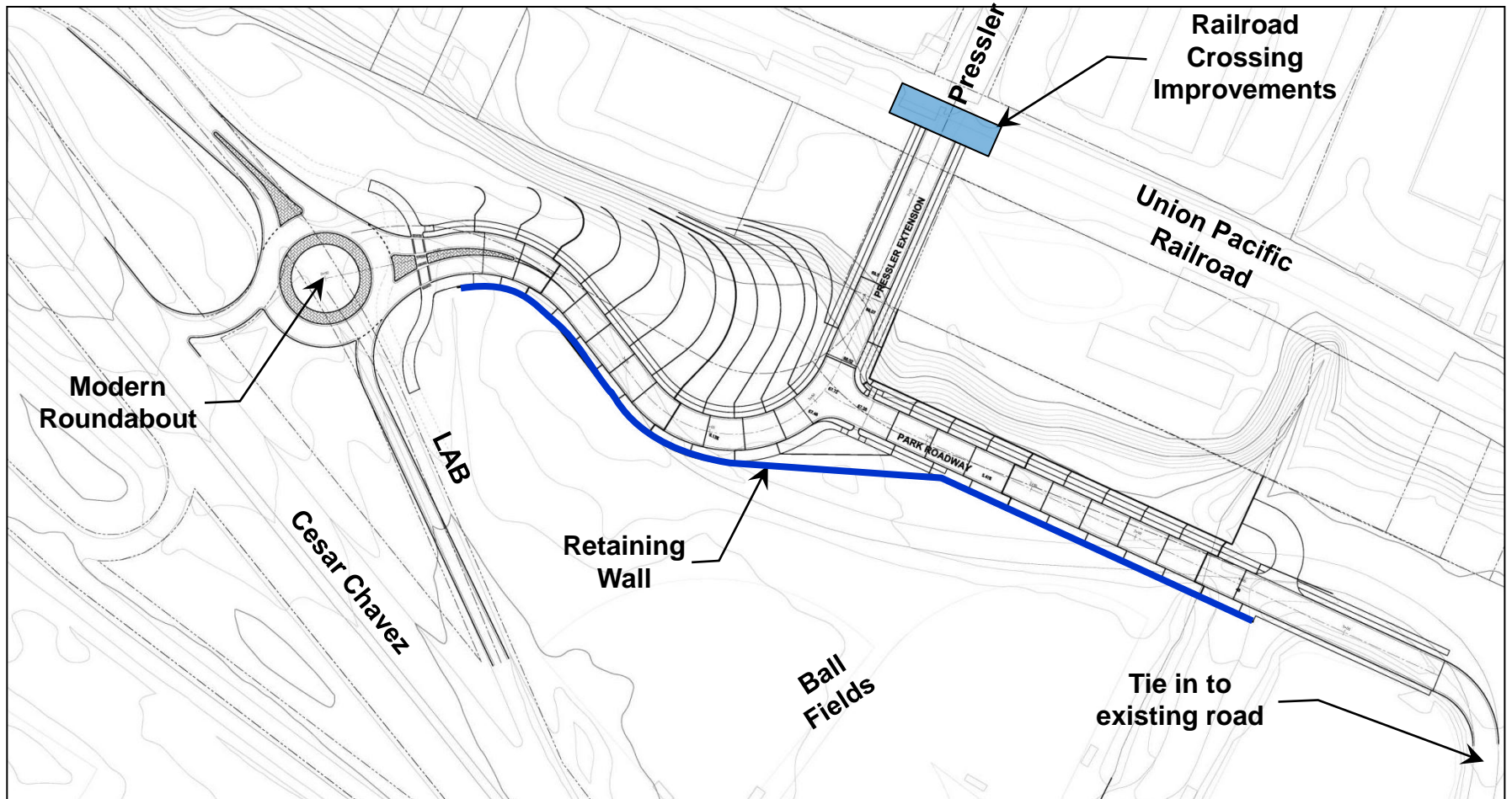
(Image from MapQuest)

Pressler Road Improvements

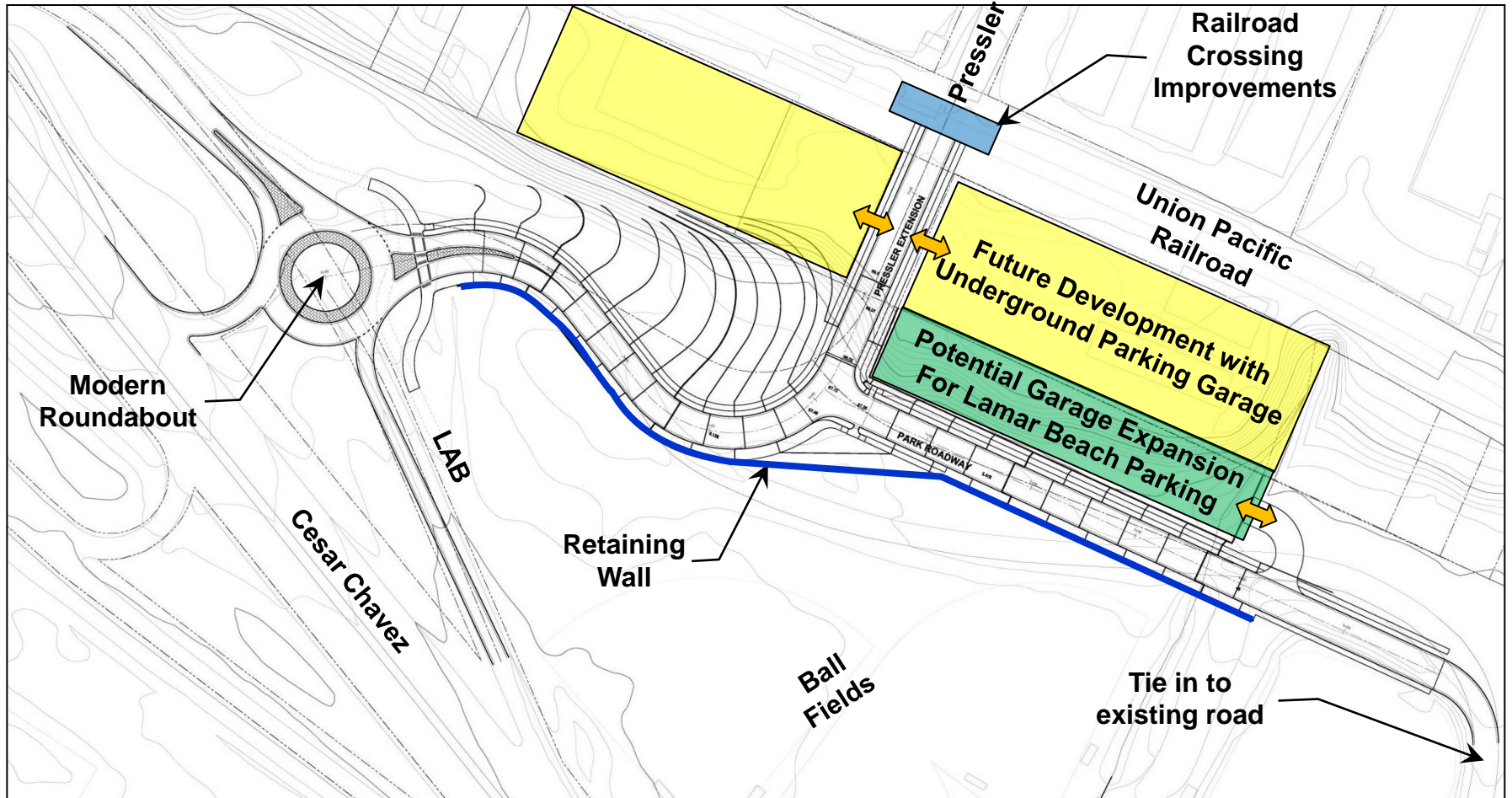


(Image from MapQuest)

Pressler Road Improvements



Pressler Road Improvements

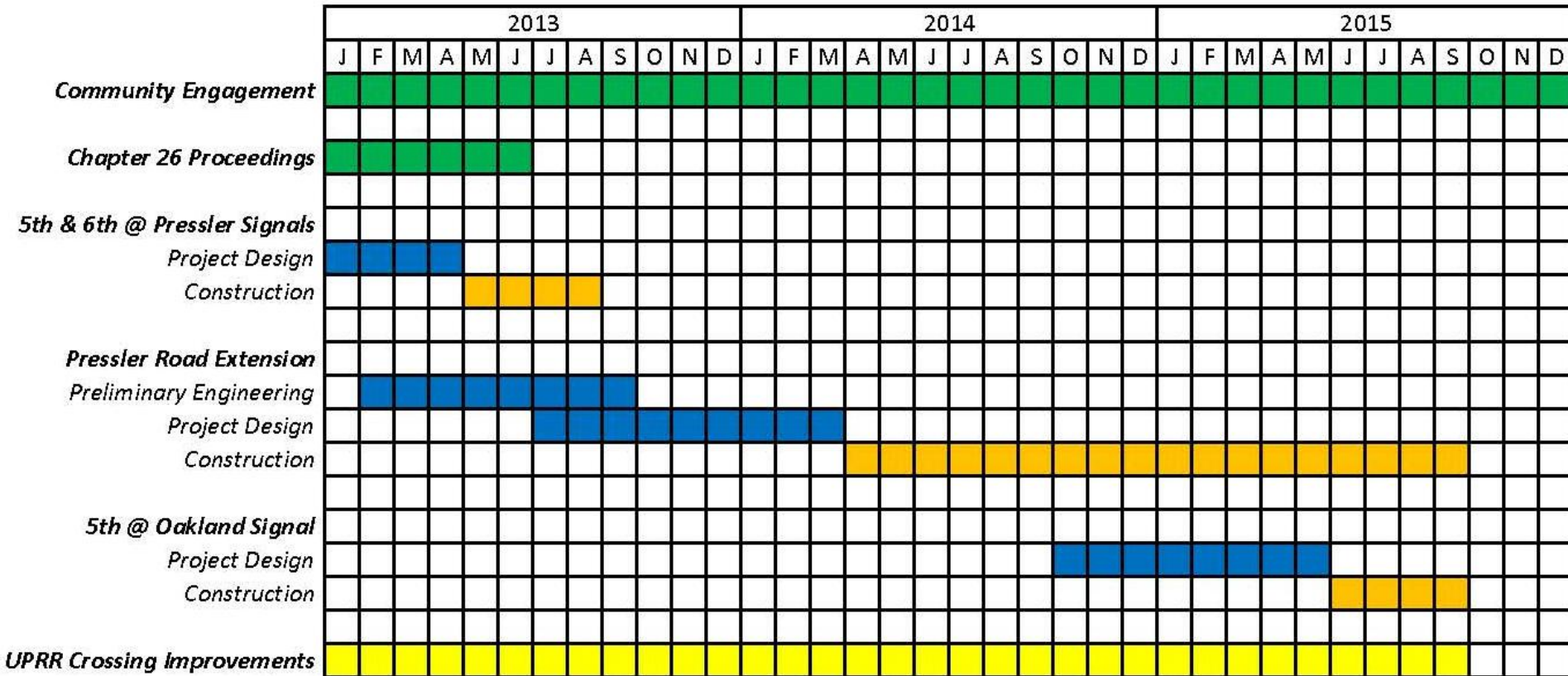


Implementation Strategy

- Funding
 - 5th & 6th @ Pressler Signals \$0.2M (2010 Bond)
 - Pressler Extension \$3.0M (2012 Bond)
 - 5th @ Oakland Signal \$0.1M (2012 Bond)
 - UPRR Crossing \$0.5M (2012 Bond)
- Total Budget \$3.7M

Implementation Strategy

- Preliminary Timelines



Implementation Strategy

- Next Steps
 - Continue Chapter 26 process
 - Continue refining implementation strategy
 - Engage design engineer
 - Engage UPRR for crossing improvements
 - Presentation to UTC 2/12/13
 - Meetings with stakeholders at milestones/upon request

Pressler Road Extension Benefits

- Lamar Beach
 - Connection to the community
 - Complimentary to future master planning efforts
 - Enables future parking management strategies
- Area Connectivity
 - Bicyclists & Pedestrians
 - MoPac Managed Lanes
- Community
 - Allows for future Railroad Quiet Zone
 - Supports partnership with future development
 - Context sensitive designs

Concepts for Pressler Road Extension

Parks & Recreation Board



Gary W. Schatz, P.E., PTOE
Austin Transportation Department
January 22, 2013