



---

# Parks and Recreation Board

## Stephen F. Austin Statue

---

City of Austin

Parks and Recreation Department

February 26, 2013



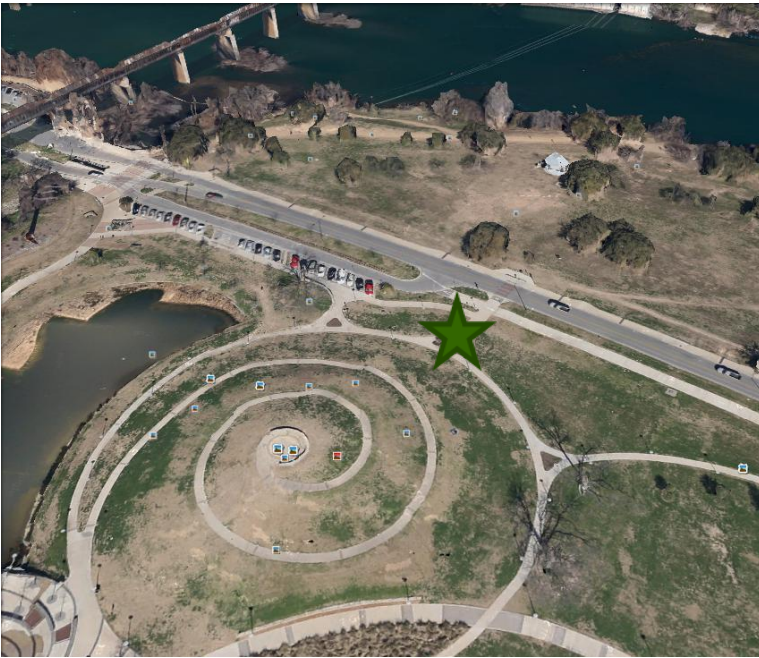
# Recent Events



- Per Policy, reviewed donation, and assembled review committee including the South Austin Civic Club on May 24, 2012
- South Austin Civic Club views piece as a donation for replacement
- Considerations provided to donor
  - Town Lake Metro Park currently in Master Plan process
  - 'City of Austin Artwork Donation Policy and Application' states that all artwork on Town Lake Metro Park must be commissioned
  - Acceptance of gifts of pre-existing art work is strongly discouraged
- Presented to the Land, Facilities and Planning Commission on Feb. 11, 2013
- Donation found to be not consistent with policy, however it is not prohibited based on policy



# CIP Staff Recommended Location

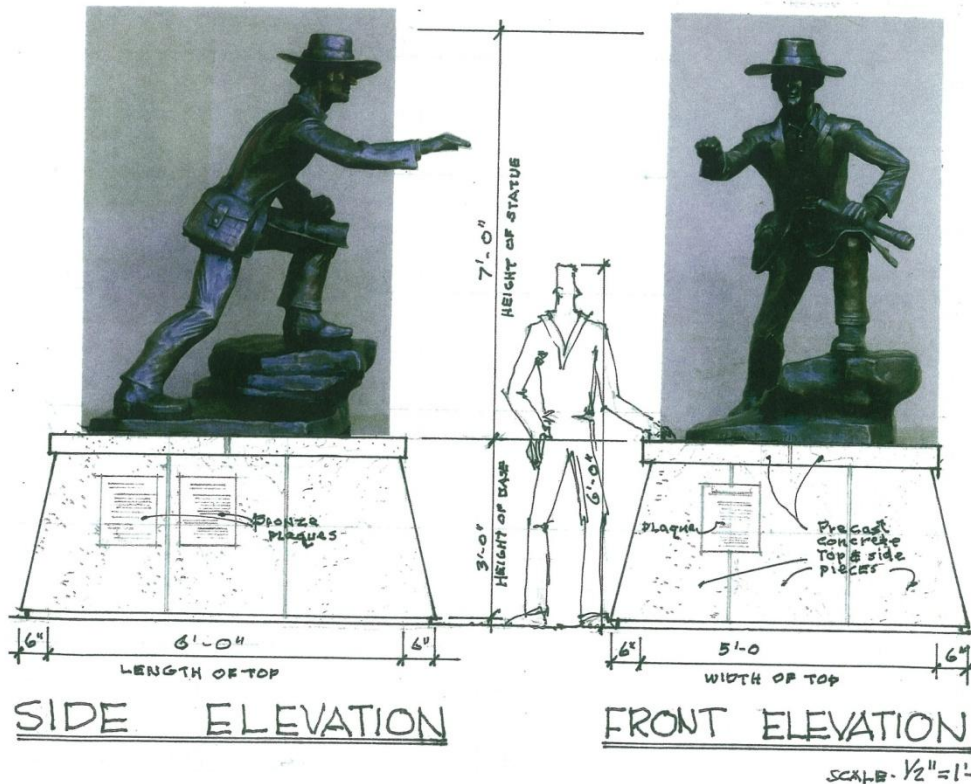


At the base of 'Doug Sahm Hill'



# Statue Images

As provided by the South Austin Civic Club



## Project Data:

### **Production Process :**

- (1) Maquette enlarged in styrofoam to size desired.
- (2) Artist refines blow-up and sculpts final statue..
- (3) Foundry makes molds & wax patterns; casts, & finishes statue.
- (4) Bronze base fabricated. (5) Statue delivered and set.

### **Materials :**

- (1) Statue cast in silica bronze.
- (2) Masonry base with cast concrete top and sides.

**Finish:** Statue - "Statuary Green". Statue sealed and waxed.

**Bronze Plaque:** Text to be furnished. Foundry to cast.

### **Foundry Work:**

- (1) Maquette production - Hall's Studio Foundry, Driftwood, Texas.
- (2) Statue production - Deep in the Heart Foundry, Bastrop, Texas.

**Shipping & Installation:** Deep in the Heart Foundry.

# Next Steps



- ❑ Provide recommendation on the placement of the Stephen F. Austin Statue
- ❑ Forward Stephen F. Austin Statue and preferred location with Land, Facilities and PARK's Board recommendations to Arts Commission
- ❑ Defer to Council for action as appropriate through memo or Request for Council Action (RCA)

