

C81

## ZONING CHANGE REVIEW SHEET

**CASE:** C14-2012-0083 Cirrus Rezoning

**P.C. DATE:** 12/11/12, 01/22/13, 02/12/13  
02/26/12, 03/26/13, 04/09/13

**ADDRESS:** 602 – 702 West Avenue  
& 800 West 6th Street

**AREA:** 1.839 Acres

**APPLICANT:** Cirrus Logic, Inc.  
(Thurman Case)

**AGENT:** Armbrust & Brown, P.L.L.C.  
(Richard Suttle)

**NEIGHBORHOOD PLAN AREA:** Downtown

**CAPITOL VIEW:** Yes

**T.I.A.** Yes

**HILL COUNTRY ROADWAY:** No

**WATERSHED:** Shoal Creek

**DESIRED DEVELOPMENT ZONE:** Yes

**ZONING FROM:** DMU-CO-CURE, Downtown Mixed Use, Conditional Overlay, Central Urban Redevelopment District for Tract 1 and LO & GO, Limited Office and General Office for Tract 2.

**ZONING TO:** DMU-CURE, Downtown Mixed Use, Central Urban Renewal District for Tract 1 and DMU, Downtown Mixed Use for Tract 2.

### **SUMMARY STAFF RECOMMENDATION:**

Staff recommends DMU-CURE, Downtown Mixed Use, Central Urban Redevelopment District for Tract 1 and DMU-CO, Downtown Mixed Use, Conditional Overlay for Tract 2. The Conditional Overlay would limit the height to ninety feet (90').

### **PLANNING COMMISSION RECOMMENDATION:**

### **DOWNTOWN COMMISSION RECOMMENDATION:**

The Downtown Commission at their regularly scheduled meeting on February 20<sup>th</sup> took the following actions: Voted 9-0-1 to delete the 2,000 vehicle trip limit. This motion passed.

Voted 4-6 for DMU-CURE zoning with a height of 90 feet. This motion failed due to a lack of a majority vote.

Voted 2-8 for DMU-CURE zoning with a height of 60 feet. This motion failed due to a lack of a majority vote.

### **DEPARTMENT COMMENTS:**

The property is currently developed with a six story office building and parking garage. The applicant, Cirrus Logic, Inc. has recently finished construction of a multi-story office building on property that it owns on the Northwest corner of West Avenue and 6<sup>th</sup> Street which was granted DMU-CURE zoning with ordinance number 20050728 in 2005. The new facility is approximately 135,000 square feet and can accommodate up to 500 employees at full capacity. The building was finished and ready for occupancy at the end of summer 2012. The property, Tract 1, was granted CURE which increased the permitted height on the property to one hundred thirty six feet (136'). The height of the current

C8/p

structure is approximately ninety feet (90'). The applicant has indicated that they would like to expand the current structure on Tract 1 onto Tract 2. The applicant has requested a height of ninety feet (90') on Tract 2 to ensure that the existing and proposed new structure will have a homogenous look and feel. The Conditional Overlay on Tract 1 is a vehicle trip limit. With the inclusion of Tract 2 into the development plan the applicant had to conduct a Traffic Impact Analysis (TIA). Therefore the zone change request on Tract 1 is to remove the 2,000 vehicle trip limit. The TIA recommendations will be included in a Public Restrictive Covenant that the applicant will execute with the City. The subject property is located on the Northwest corner of 6<sup>th</sup> Street and West Avenue. Tract 1 is located in the Lower Shoal Creek District and Tract 2 is located in the both the Northwest District and the Lower Shoal Creek district of the Downtown Austin Plan. The Lower Shoal Creek District of the Downtown Austin Plan has not been finished yet and therefore makes no recommendations for the south portion of Tract 2. The Downtown Plan calls for the north half of Tract 2 to convert to Downtown Mixed Use with a sixty foot height limit (DMU-60). The applicant has been meeting with the neighborhoods, Original Austin Neighborhood Association and West Avenue Home Owners Association, to work out an agreement that would satisfy both parties. To date the neighborhoods have issued a joint letter stating their positions and it is included in your back up. Note: Single family, multifamily and commercial uses on properties zoned CBD or DMU are required to meet a 1-star rating under Austin Energy's Green Building Program.

**BASIS FOR RECOMMENDATION:**

1. *Zoning should allow for reasonable use of the property.*

Granting the requested zoning, as stated in the staff recommendation, would result in a land use that would be no more intense than what would be granted in the Downtown Austin Plan.

**EXISTING ZONING AND LAND USES:**

	<b>ZONING</b>	<b>LAND USES</b>
<b>SITE</b>	DMU-CO-CURE & LO & GO	
<b>NORTH</b>	GO	Office building
<b>SOUTH</b>	DMU	Condominiums
<b>EAST</b>	CBD	Restaurant
<b>WEST</b>	DMU	Retail/Office
		Office/parking lot

**CASE HISTORIES:**

<b>CASE NUMBER</b>	<b>REQUEST</b>	<b>PLANNING COMMISSION</b>	<b>CITY COUNCIL</b>
C14-05-0040	From GO to DMU-CURE-CO	Approved DMU-CURE-CO [Vote: 7-0]	Approved DMU-CURE-CO [Vote: 7-0]
C14-06-0007	From CS to CBD-CO	Approved CBD-CO [Vote: 7-0]	Approved CBD-CO [Vote: 5-0]
C14-06-0183	From GR to CBD-CURE-CO	Approved CBD-CO-CURE [Vote: 7-0]	Approved CBD-CO-CURE [Vote: 7-0]

C8/3

**NEIGHBORHOOD ORGANIZATION:**

- Downtown Austin Neighborhood Coalition
- Pecan Street Owner's Association
- Downtown Austin Alliance
- Austin Warehouse District Association
- Old Pecan Street Association
- Sentral Plus East Austin Koalition
- Austin Neighborhood Council
- Downtown Austin Neighborhood Association
- Austin City Lofts HOA
- West End Austin Alliance
- Original Austin Neighborhood Assoc.

**SCHOOLS:**

Matthews Elementary School, O' Henry Middle School, Austin High School

**SITE PLAN:**

SP1. Any new development is subject to Subchapter E. Design Standards and Mixed Use. Additional comments will be made when the site plan is submitted.

SP2. There is a site plan currently approved for this property (SP-2008-0514C) which provides for office, restaurant, and research services uses, along with associated parking garage and drainage facilities.

SP3. The site is within a TWO Capitol View Corridor from the Barton Creek Pedestrian Bridge; height restrictions are strictly enforced.

SP 4. This site is within the Criminal Justice and the Downtown Creek Overlays.

SP 5. This site is within the Downtown area (boundaries are MLK, Lamar, Town Lake and IH35), it is recommended you contact the Design Commission to discuss your project. For more information regarding the Design Commission, please contact Jorge Rousselin, with Urban Design Division of Neighborhood Planning and Zoning, at 974-2975.

SP 6. FYI – Any new development must be compliance with Green Building standards of ONE Star is required for all buildings constructed on this site. Contact the Green Building Program at 482-5300 for further information.

**ENVIRONMENTAL:**

1. The site is not located over the Edwards Aquifer Recharge Zone. The site is located in the Shoal Creek Watershed of the Colorado River Basin, which is classified as an Urban Watershed by Chapter 25-8 of the City's Land Development Code. It is in the Desired Development Zone.
2. Impervious cover is not limited in this watershed class; therefore the zoning district impervious cover limits will apply.

C8/4 4

3. This site is required to provide on-site structural water quality controls (or payment in lieu of) for all development and/or redevelopment when 5,000 s.f. cumulative is exceeded, and detention for the two-year storm. At this time, no information has been provided as to whether this property has any pre-existing approvals which would preempt current water quality or Code requirements.
4. According to floodplain maps there is a floodplain within the project area.
5. Trees will likely be impacted with a proposed development associated with this rezoning case. Please be aware that an approved rezoning status does not eliminate a proposed development's requirements to meet the intent of the tree ordinances. If further explanation or specificity is needed, please contact the City Arborist at 974-1876. At this time, site specific information is unavailable regarding other vegetation, areas of steep slope, or other environmental features such as bluffs, springs, canyon rimrock, caves, sinkholes, and wetlands.
6. Standard landscaping and tree protection will be required in accordance with LDC 25-2 and 25-8 for all development and/or redevelopment.

**TRANSPORTATION:**

TR1. No additional right-of-way is needed at this time.

TR2. A traffic impact analysis is required and has been received. Additional right-of-way, participation in roadway improvements, or limitations on development intensity may be recommended based on review of the TIA. [LDC, Sec. 25-6-142]. Staff will issue TIA review comments via a separate memo.

TR3. Existing Street Characteristics:

Name	ROW	Pavement	Classification	Sidewalks	Bike Route	Bus Route
West Avenue	80'	36'	Collector	Yes	Yes	Yes (within ¼ mile)
W. 6 <sup>th</sup> St.	80'	60'	Major Arterial	Yes	Yes	Yes

**CITY COUNCIL DATE:** January 17<sup>th</sup>, 2013  
February 14<sup>th</sup>, 2013  
February 28<sup>th</sup>, 2013

**ACTION:** Postponed to February 14<sup>th</sup>, 2013  
Postponed to February 28<sup>th</sup>, 2013  
Postponed to March 26<sup>th</sup>, 2013

**ORDINANCE READINGS:** 1<sup>ST</sup> 2<sup>ND</sup> 3<sup>RD</sup>

**ORDINANCE NUMBER:**

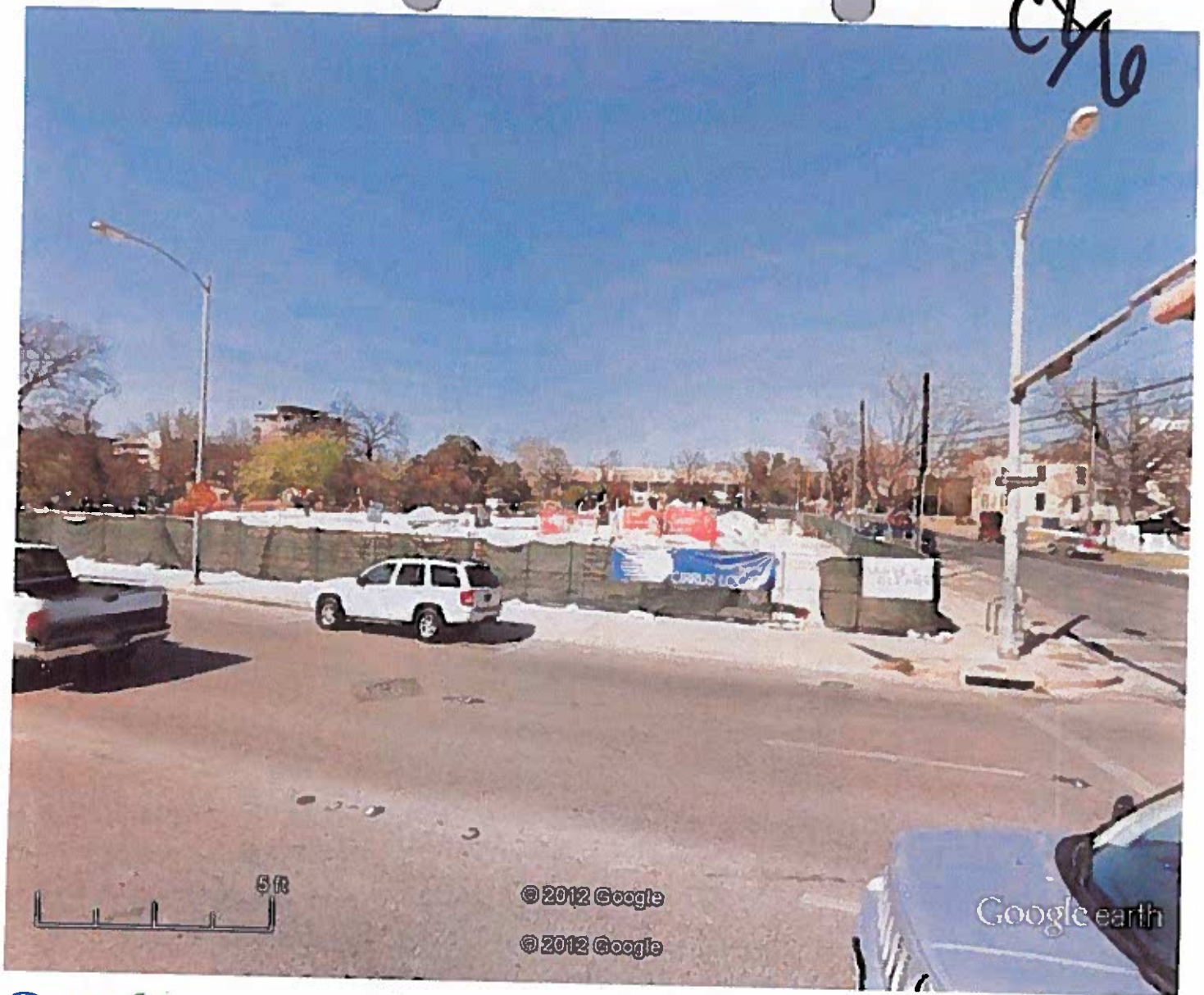
**CASE MANAGER:** Clark Patterson  
[Clark.patterson@ci.austin.tx.us](mailto:Clark.patterson@ci.austin.tx.us)

**PHONE:** 974-7691





C8/6



© 2012 Google

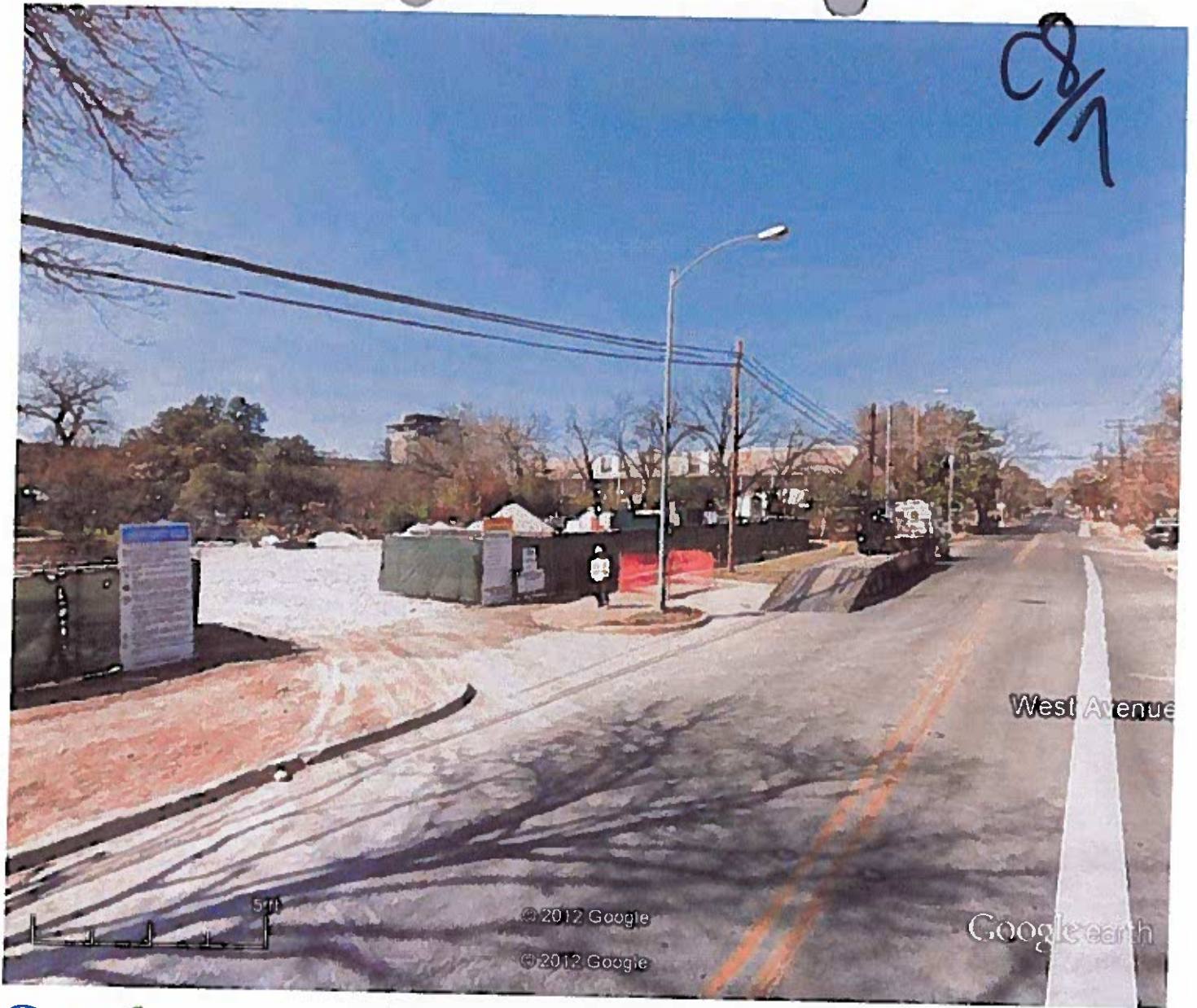
© 2012 Google

Google earth

Google earth



8/1



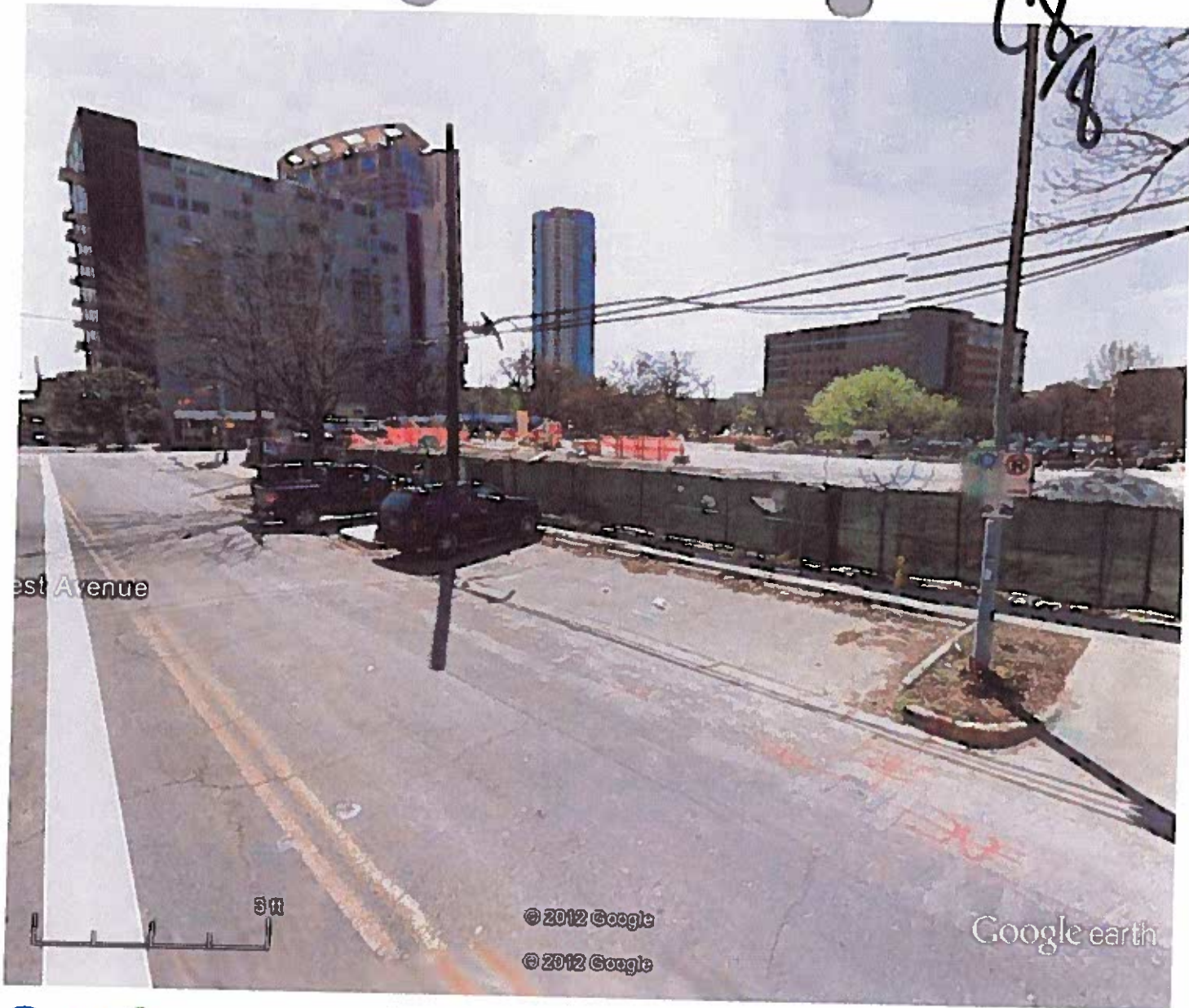
Google earth

feet 10  
meters 3





C8  
8



est Avenue

5 ft

© 2012 Google

© 2012 Google

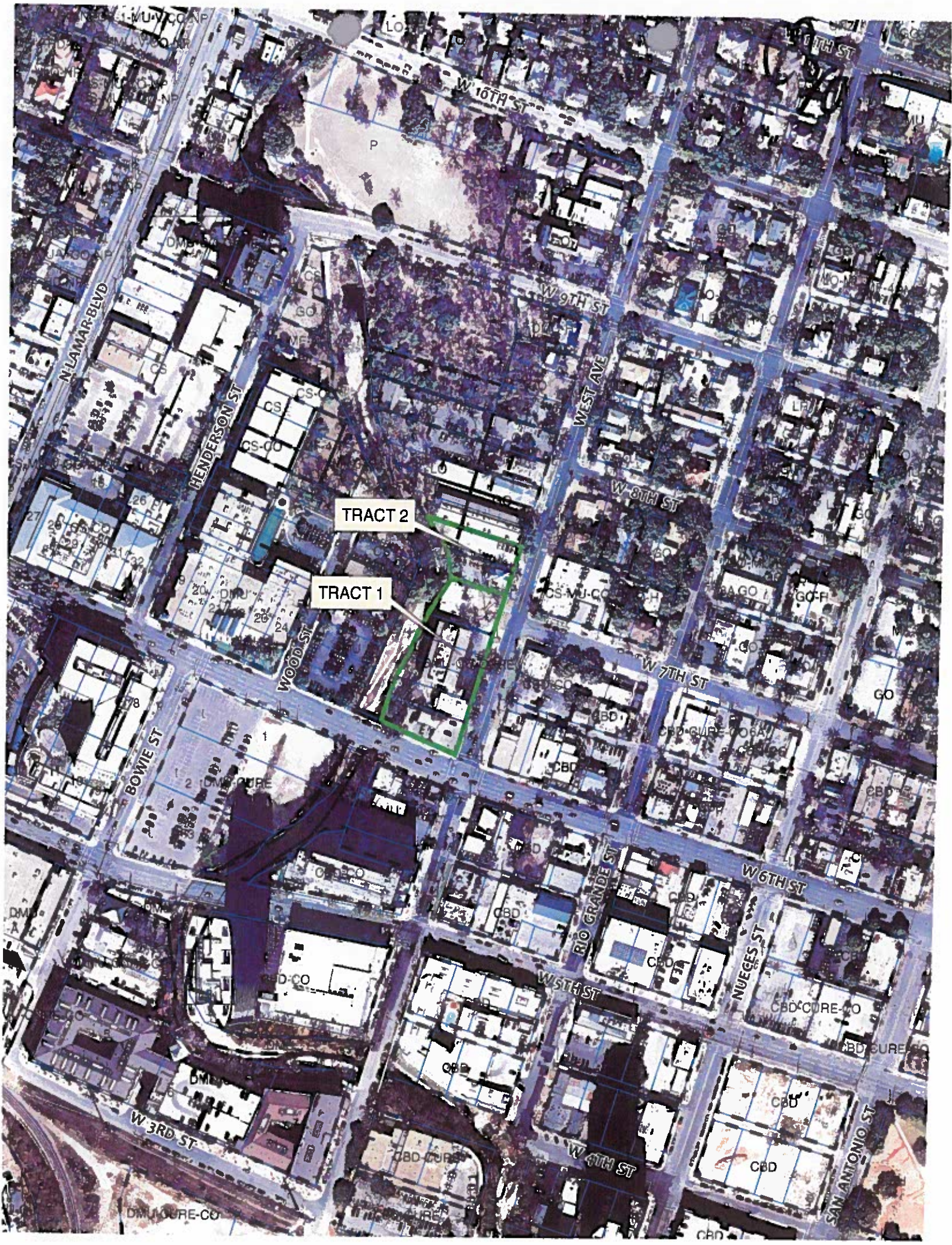
Google earth

Google earth

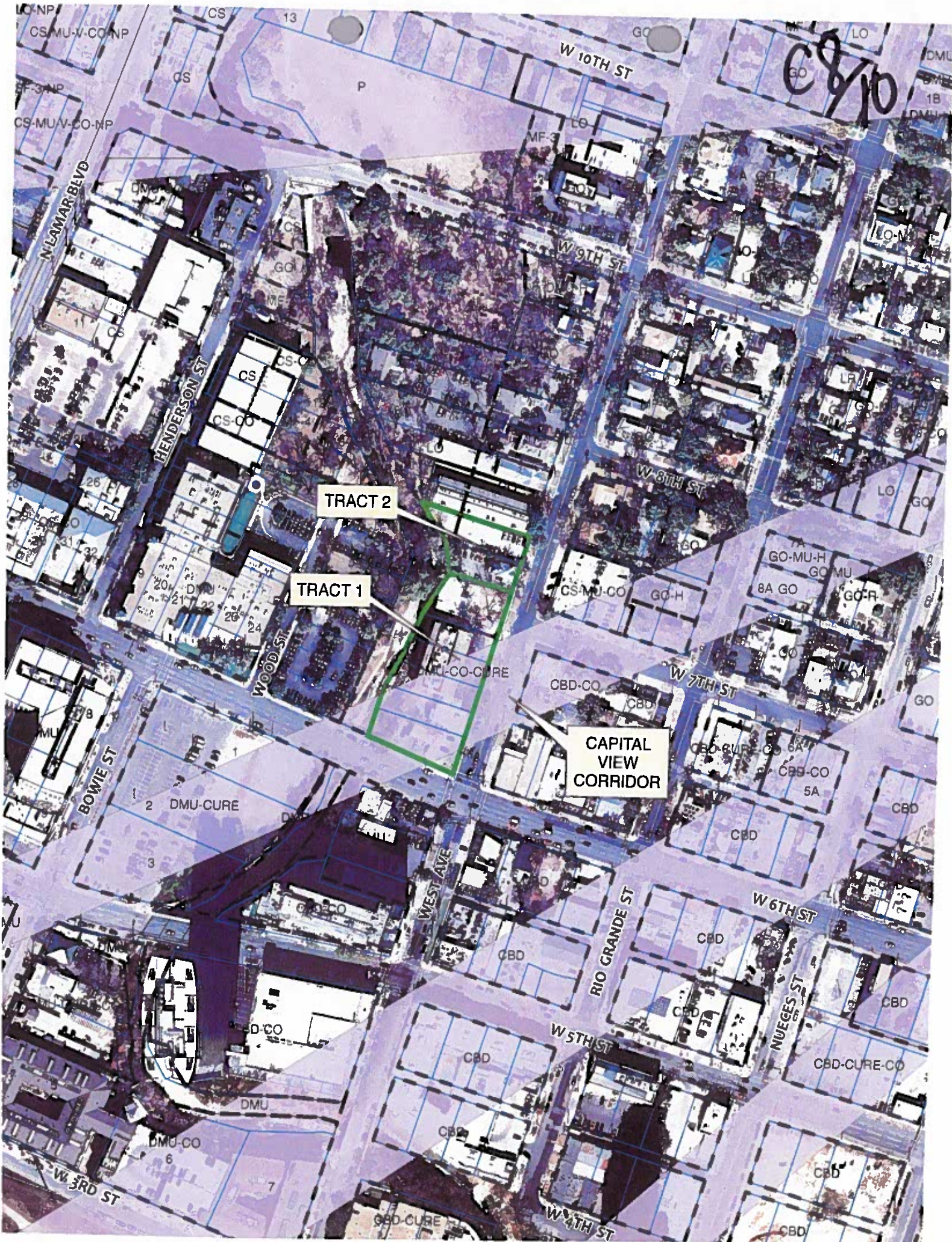
feet  
meters











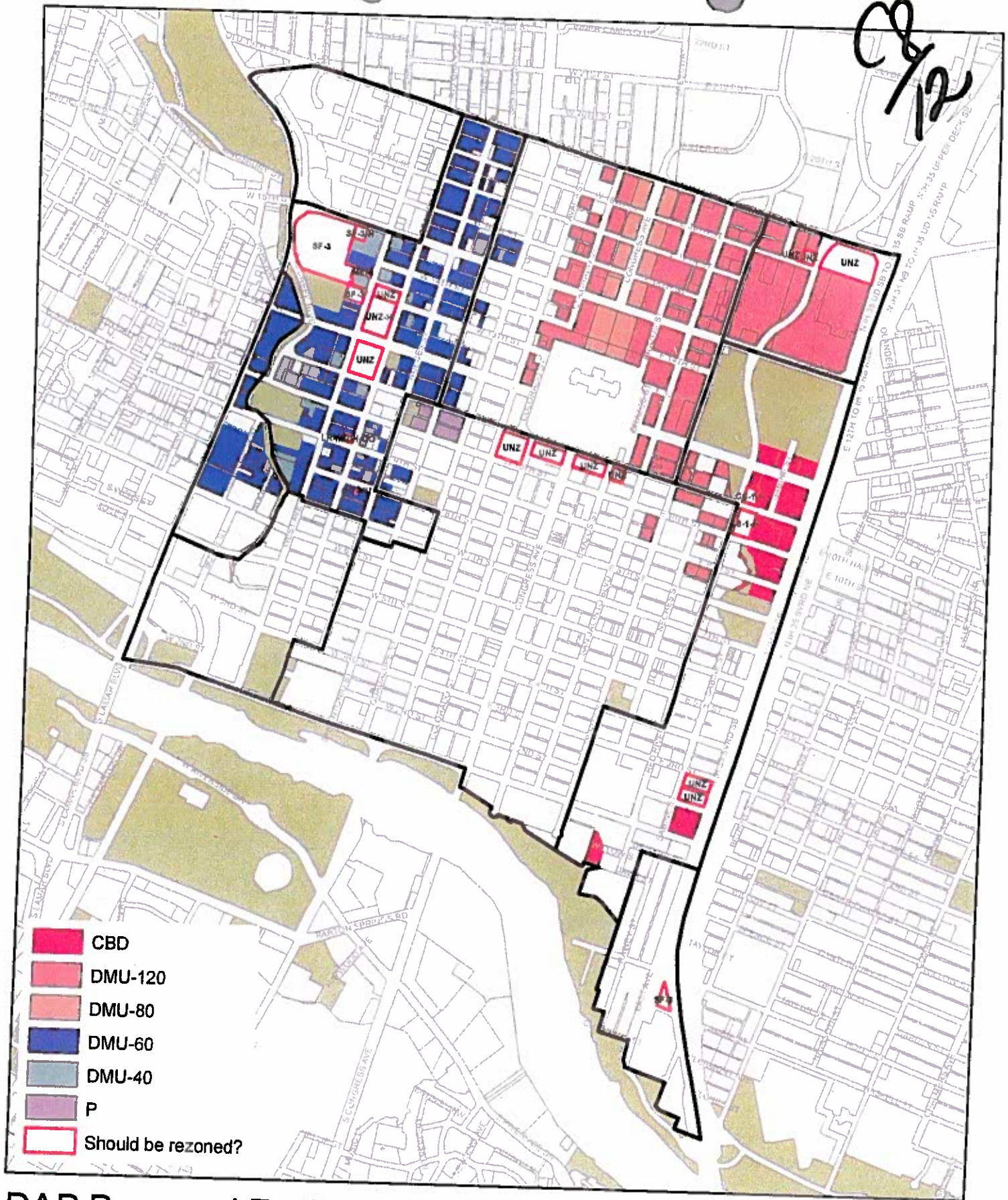


# Height Determination Worksheet

Important: Select the Viewpoint/Corridor Name (below) FIRST.

Viewpoint/Corridor Name	Review Site	VP Elevation	Distance from Cap to Review Site Point	RS Elevation (approx.)	a 653 - VP Elev.	b Distance VP to Cap	$\tan \theta$ a/b	b' Distance VP to RS	a' $\tan \theta$ times b'	Max. Elev. VP Elev. + a'	h Max. Elev. - RS Elev. (approx.)
Barton Creek Pedestrian Bridge - 1	a	445	3350	472	208	8465	0.0246	5115	125.83	570.53	96.83
Barton Creek Pedestrian Bridge - 1	b	445	3600	460	208	8465	0.0246	4865	119.68	564.68	104.08

C8/11



# DAP Proposed Zoning Changes



PLANNING AND  
DEVELOPMENT REVIEW  
DEPARTMENT

*This product is for informational purposes and may not have been prepared for or be suitable for legal, engineering, or surveying purposes. It does not represent an on-the-ground survey and represents only the approximate relative location of property boundaries. It has been produced by the Planning and Development Review Department for the sole purpose of geographic reference. No warranty is made by the City of Austin regarding specific accuracy or completeness.*

9/10/2012





C8/14

[Twitter](#)[RSS Feeds](#)[Profile](#)[Company](#)[Investors](#)[Careers](#)[Quality](#)[Contacts](#)[Home](#)[Products](#)[Applications](#)[Support](#)

Keyword Search

## Company

[View Mobile Version](#)[About Cirrus Logic](#)[Locations](#)[Press Room](#)[Home](#) [Company](#)[Print This Page](#)

## Company Information



Cirrus Logic, Inc. is a premier supplier of high-precision analog and digital signal processing components for audio and energy markets.

Founded in 1984, Cirrus Logic excels at developing complex chip designs where feature integration and innovation is a premium. Cirrus Logic has more than 1,000 patents that are key to

our more than 700 products serving more than 2,500 end customers globally, through both direct and distributor-based channel sales.

The company's headquarters are in Austin, Texas, with international locations in Europe, China and Japan. In June 2012 Cirrus Logic relocated to our [new headquarters building](#) at 800 West 6th Street in downtown Austin.

## Current News

November 20, 2012

**[Cirrus Logic Announces \\$200 Million Share Repurchase Program](#)**

November 7, 2012

**[Cirrus Logic To Move Motor Control IC Team to Austin Headquarters](#)**

October 31, 2012

**[Cirrus Logic Reports September Quarter Revenue Up 91 Percent Year-Over-Year to \\$194 Million](#)****[Company Guides December Quarter Revenue Up More than 120 Percent Year-Over-Year](#)**

October 29, 2012

**[Cirrus Logic Reschedules Q2 Earnings Release to Oct. 31 Due to Severe Weather](#)**

October 25, 2012

**[Cirrus Logic Named One of Best Companies to Work for in America for Second Consecutive Year](#)****[Austin-Based Semiconductor Company on Nationally Recognized List by Great Place to Work Institute](#)**Visit our [News Archive](#)

**Please note:** Cirrus Logic routinely posts all important information on its website, including financial results and projections on its investor site. Many of the materials available are dated materials that reflect Cirrus Logic's thoughts as of that date. Cirrus Logic undertakes no obligation to update or revise these materials.

## National Awards



FORTUNE



## State Awards



## Local Awards

[Home](#)[Products](#)[Applications](#)[Support](#)[Company](#)[Investors](#)[Careers](#)[Quality](#)[Contacts](#)



[Twitter](#)[RSS Feeds](#)[Profile](#)[Company](#)[Investors](#)[Careers](#)[Quality](#)[Contacts](#)[Home](#)[Products](#)[Applications](#)[Support](#)

Keyword Search

## Company

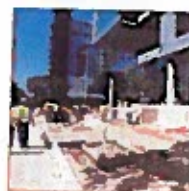
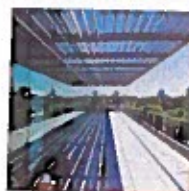
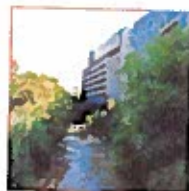
[Home](#) [Company](#) [Locations](#) [New Headquarters Building](#)[Print This Page](#)[About Cirrus Logic](#)[Locations](#)[Map and Directions](#)[International Sites](#)[Cirrus Logic  
Headquarters](#)[Press Room](#)

### New Headquarters Building



In January 2011, Cirrus Logic began construction on its new corporate headquarters in downtown Austin at 800 West 8th Street, intersecting West Avenue. The new facility is approximately 135,000 square feet and accommodates up to 500 employees at full capacity. The building was certified for occupancy and headquarters staff were transitioned to their new offices in June 2012.

#### Week of May 14, 2012

**Week of April 2, 2012****Week of February 27, 2012****Week of December 26, 2011**

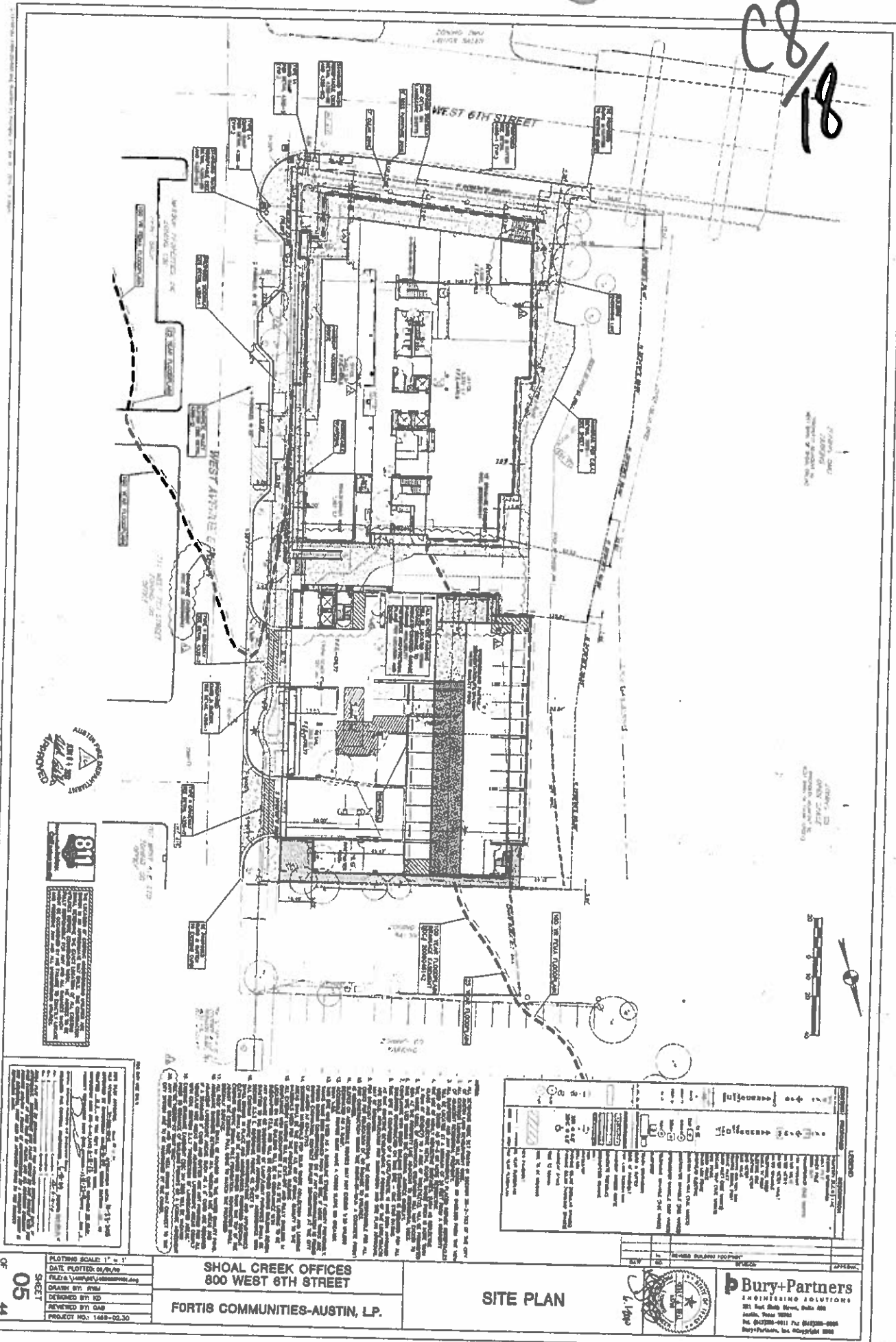
*CS/He*





C8/17



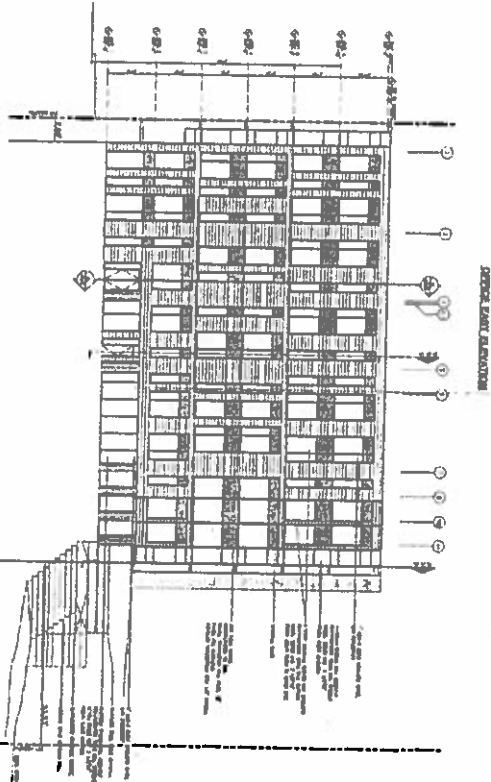
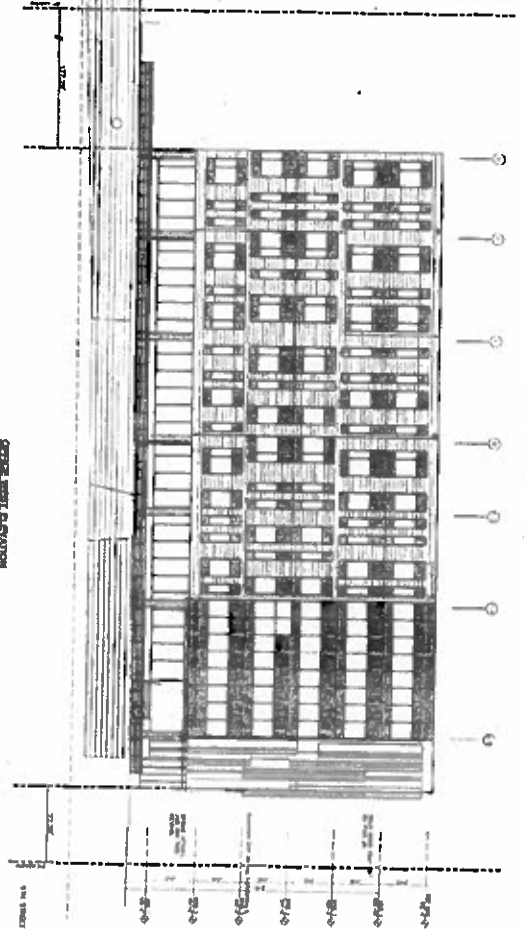
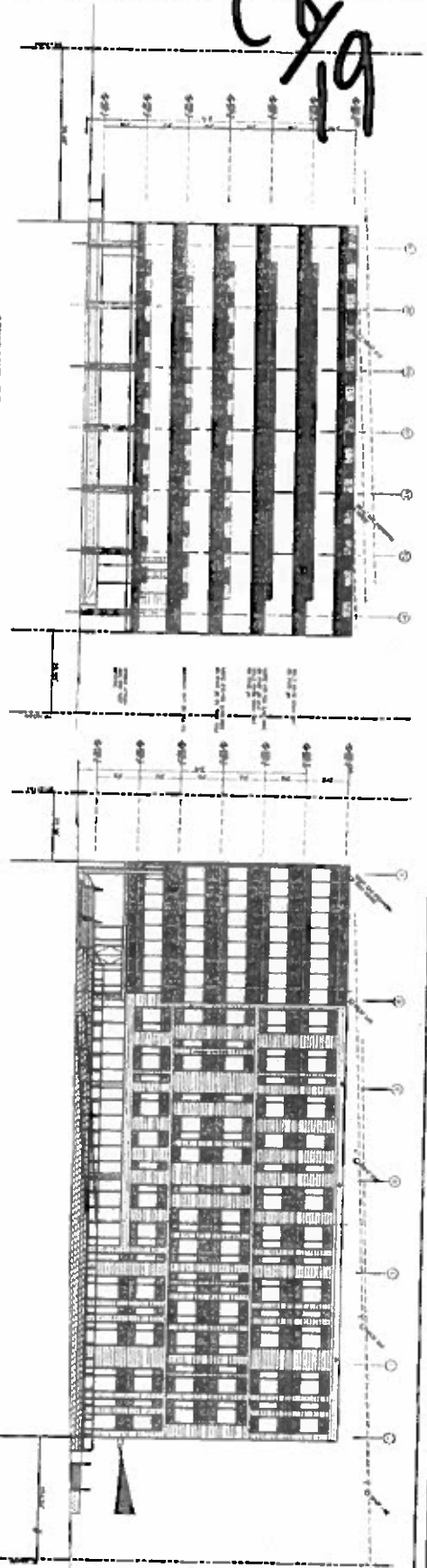


**SHOAL CREEK OFFICES  
800 WEST 8TH STREET  
FORTIS COMMUNITIES-AUSTIN, LP**

## SITE PLAN

**Bury+Partners**  
ENGINEERING SOLUTIONS  
321 East 32nd Street, Suite 400  
Austin, Texas 78701  
Tel. (512) 338-0011 Fax (512) 338-0005  
Bury+Partners, Inc. © Copyright 1998

C8/19



NOTES:  
1. SEE EXISTING LAYOUT FOR DIMENSIONS OF EXISTING BUILDING.  
2. DIMENSIONS ARE GIVEN IN FEET AND INCHES.  
3. DIMENSIONS ARE GIVEN IN FEET AND INCHES.  
4. DIMENSIONS ARE GIVEN IN FEET AND INCHES.

DATE PLOTTED: 10/10/2008  
FILE: C:\Users\jw\Documents\Bury+Partners\Projects\Shoal Creek Offices\Shoal Creek Offices.dwg  
DRAWN BY: JWM  
DESIGNED BY: JWM  
REVIEWED BY: GAB  
PROJECT NO.: 1488-00-00

SHOAL CREEK OFFICES  
800 WEST 6TH STREET  
FORTIS COMMUNITIES-AUSTIN, LP.

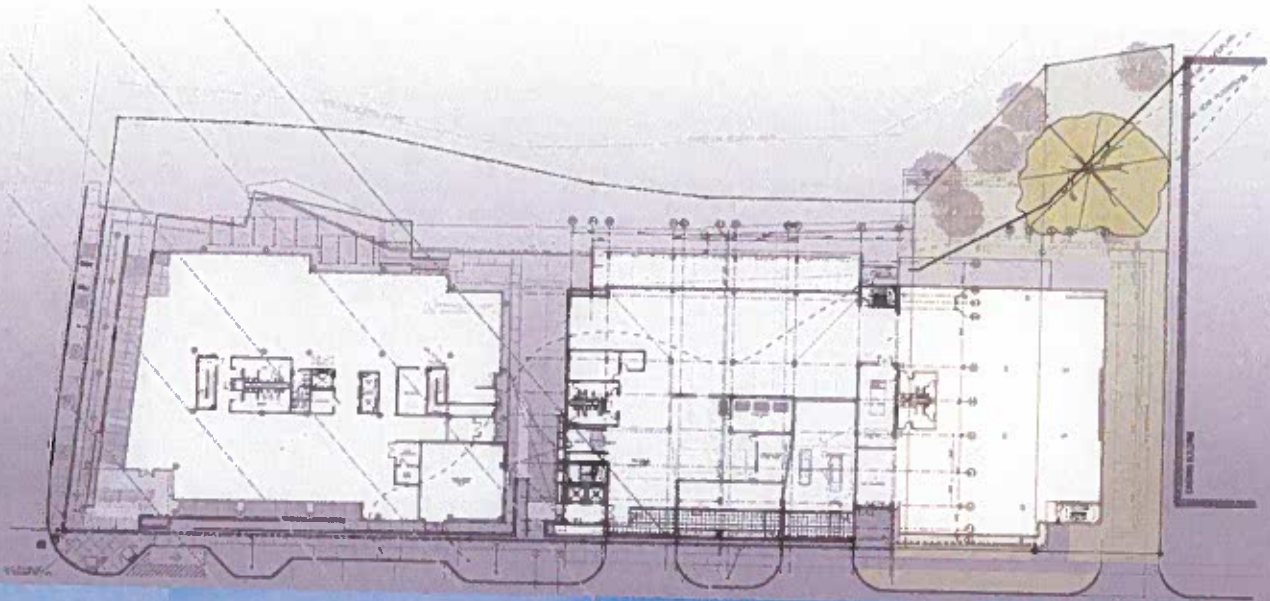
ARCHITECTURAL  
ELEVATIONS

**Bury+Partners**  
ENGINEERING SOLUTIONS  
800 West 6th Street, Suite 400  
Austin, Texas 78704  
Tel: (512) 225-0001 Fax: (512) 225-0005  
Bury+Partners, Inc. © Copyright 2008



08/20

# CIRRUS LOGIC II



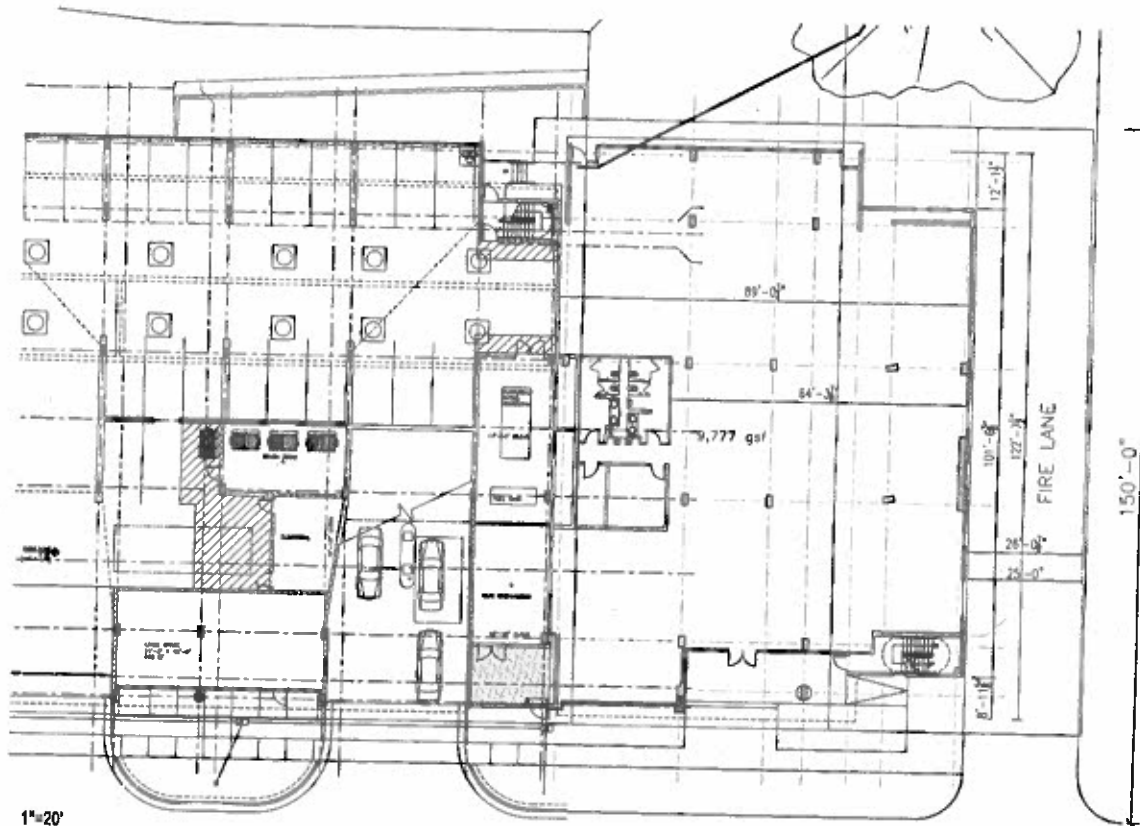
muno  
albin

HOUSE

CIRRUS LOGIC  
LOT 782 / PM  
Feb. 14, 2013



C8/21



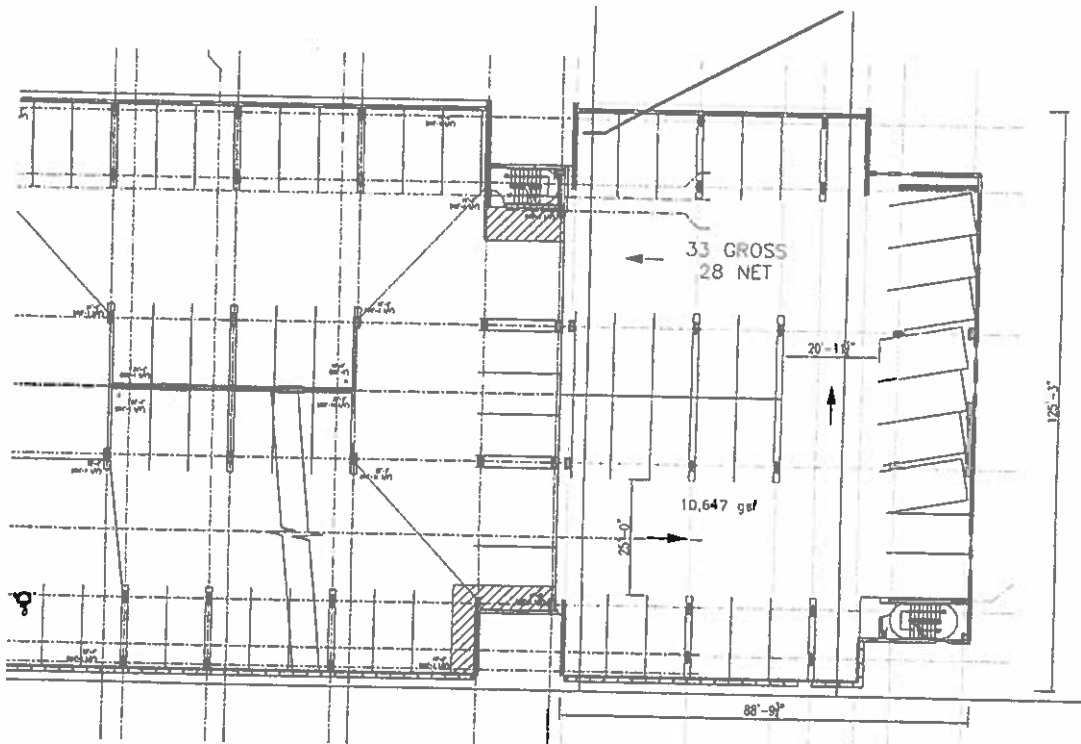
	GSF	PARKING SPACES	
		GROSS	NET
Level 8	9,293		
Level 7	6,775	18	16
Level 6	9,584	26	22
Level 5	10,647	33	28
Level 4	10,647	33	28
Level 3	10,647	33	28
Level 2	10,647	33	28
Level 1	9,777		
TOTAL:	78,017	176	150

GROUND FLOOR  
CIRRUS LOGIC PHASE 2



DATE: 02/14/2013 10:11 AM PROJECT: CIRRUS LOGIC PHASE 2 176 SPACES 150 SPACES

C8/22



1"=20'

TYPICAL FLOOR PLAN LEVELS 2 - 5  
CIRRUS LOGIC PHASE 2



Revisions	
NO.	DESCRIPTION
001	February 14, 2013
002	February 14, 2013
003	February 14, 2013
004	February 14, 2013
005	February 14, 2013
006	February 14, 2013
007	February 14, 2013
008	February 14, 2013
009	February 14, 2013
010	February 14, 2013
011	February 14, 2013
012	February 14, 2013
013	February 14, 2013
014	February 14, 2013
015	February 14, 2013
016	February 14, 2013
017	February 14, 2013
018	February 14, 2013
019	February 14, 2013
020	February 14, 2013
021	February 14, 2013
022	February 14, 2013
023	February 14, 2013
024	February 14, 2013
025	February 14, 2013
026	February 14, 2013
027	February 14, 2013
028	February 14, 2013
029	February 14, 2013
030	February 14, 2013
031	February 14, 2013
032	February 14, 2013
033	February 14, 2013
034	February 14, 2013
035	February 14, 2013
036	February 14, 2013
037	February 14, 2013
038	February 14, 2013
039	February 14, 2013
040	February 14, 2013
041	February 14, 2013
042	February 14, 2013
043	February 14, 2013
044	February 14, 2013
045	February 14, 2013
046	February 14, 2013
047	February 14, 2013
048	February 14, 2013
049	February 14, 2013
050	February 14, 2013
051	February 14, 2013
052	February 14, 2013
053	February 14, 2013
054	February 14, 2013
055	February 14, 2013
056	February 14, 2013
057	February 14, 2013
058	February 14, 2013
059	February 14, 2013
060	February 14, 2013
061	February 14, 2013
062	February 14, 2013
063	February 14, 2013
064	February 14, 2013
065	February 14, 2013
066	February 14, 2013
067	February 14, 2013
068	February 14, 2013
069	February 14, 2013
070	February 14, 2013
071	February 14, 2013
072	February 14, 2013
073	February 14, 2013
074	February 14, 2013
075	February 14, 2013
076	February 14, 2013
077	February 14, 2013
078	February 14, 2013
079	February 14, 2013
080	February 14, 2013
081	February 14, 2013
082	February 14, 2013
083	February 14, 2013
084	February 14, 2013
085	February 14, 2013
086	February 14, 2013
087	February 14, 2013
088	February 14, 2013
089	February 14, 2013
090	February 14, 2013
091	February 14, 2013
092	February 14, 2013
093	February 14, 2013
094	February 14, 2013
095	February 14, 2013
096	February 14, 2013
097	February 14, 2013
098	February 14, 2013
099	February 14, 2013
100	February 14, 2013

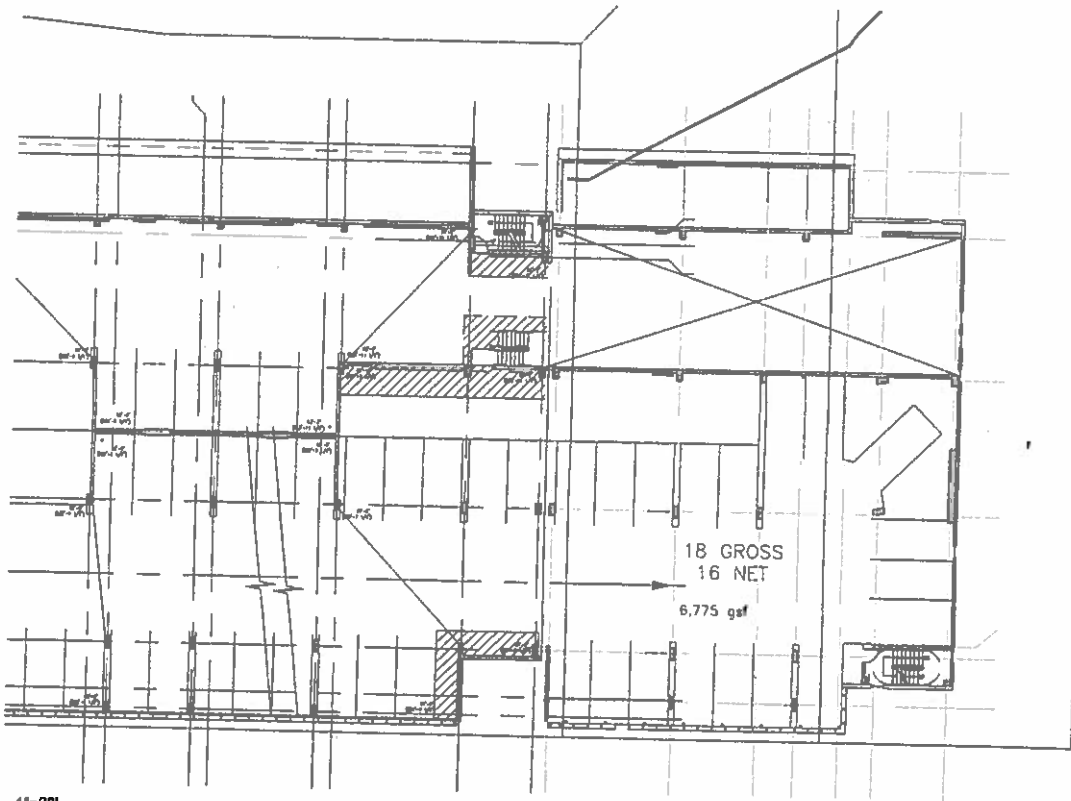
DATE & DESCRIPTION: DATE: 02/14/2013 BY: JMM/110.000.000 000 000000000000

[illegible]

WFO		February 14, 2003	
A	FP	003	000

© 2000 Blackwell Science Ltd *Journal of Internal Medicine* 247: 399–406

C8/24



1"=20'

LEVEL 7

CIRRUS LOGIC PHASE 2



REVISIONS			
NO.	DATE	DESCRIPTION	BY
1	February 14, 2003	ISSUED FOR PERMIT	ALB
A	FP	004	000

PRINTED ON 100% RECYCLED PAPER (50% POST CONSUMER WASTE) 11x17 INCHES 1/16" THICK 100% RECYCLED PAPER



Office  
9,293 sqf

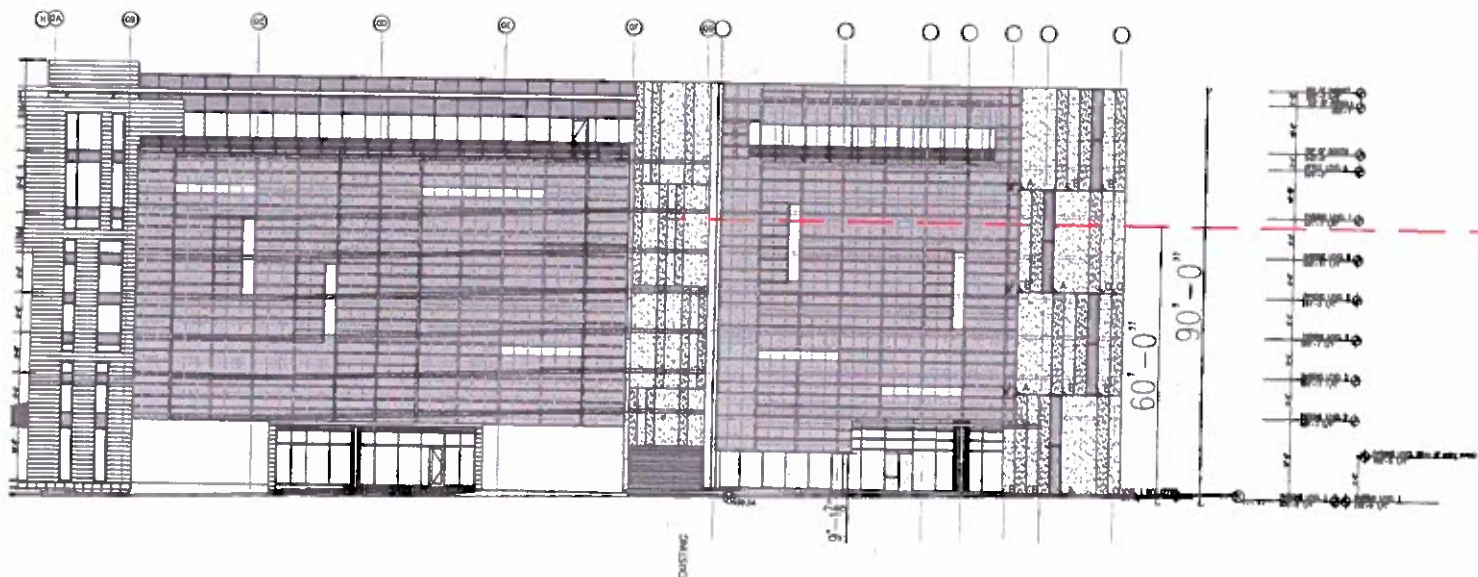
## CIRRUS LOGIC PHASE 2



February 14, 2013			
A	FP	005	000

Steve H. Jorgensen (Hans N.) | 604-1100 72 17000 / 140,000 1100 mod possible for 100

CS  
2/6



EAST ELEVATION

CIRRUS LOGIC PHASE 2

**HOUSE**  
+ partners

**muno**  
**albin**

PROJECT: CIRRUS LOGIC PHASE 2		DATE: February 14, 2013
A	EL	001   000

NOTES: 1. ALL DIMENSIONS ARE IN FEET AND INCHES. 2. ALL DIMENSIONS ARE TO FACE UNLESS NOTED OTHERWISE. 3. SEE OTHER SHEETS FOR DETAILS.

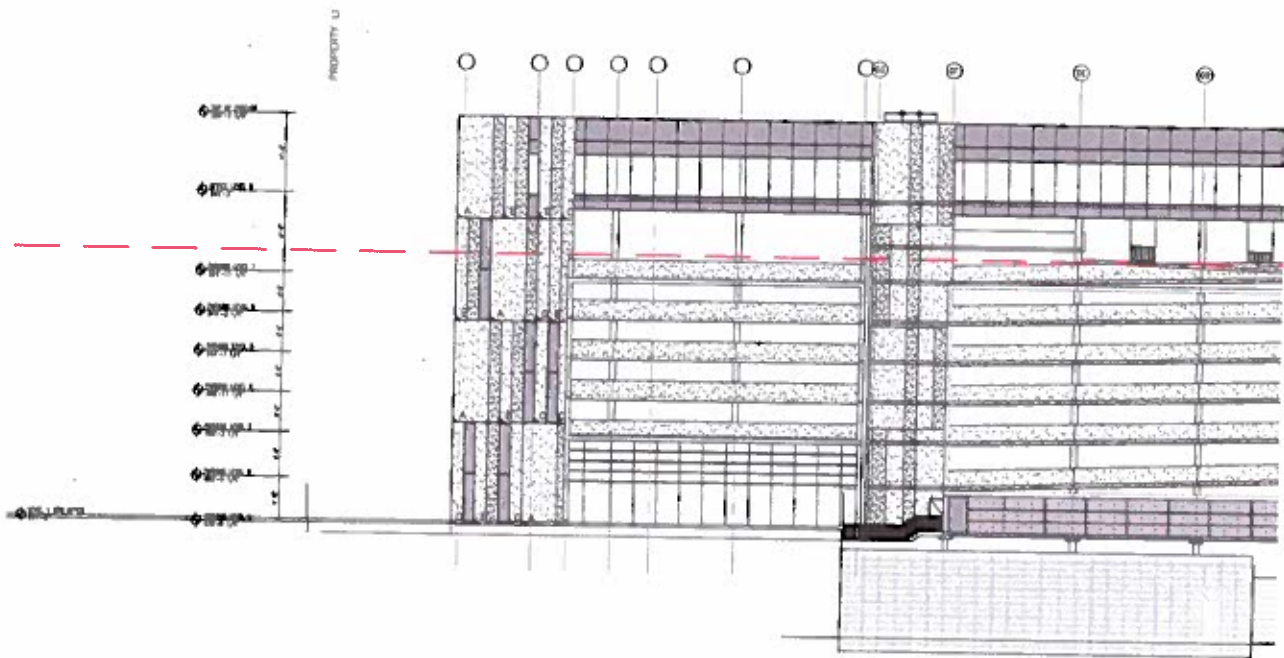
## CIRRUS LOGIC PHASE 2



February 10, 2002			
A EL		002 000	

TABLE 2. *Estimated total number of birds killed by collisions with power lines in the United States, 1999-2000*

C8/28



WEST ELEVATION  
CIRRUS LOGIC PHASE 2



REVISIONS		DATE	
1	EL	003	000

2010 © MUNOZ ALBIN (2010) ALL RIGHTS RESERVED BY MUNOZ ALBIN. HOUSE + PARTNERS (2010) ALL RIGHTS RESERVED BY HOUSE + PARTNERS.



C8/g  
29

**ORDINANCE NO. 20050728-Z021**

**AN ORDINANCE REZONING AND CHANGING THE ZONING MAP FOR THE PROPERTY LOCATED AT 800 WEST 6<sup>TH</sup> STREET, 602, 606, AND 700 WEST AVENUE FROM GENERAL OFFICE (GO) DISTRICT AND DOWNTOWN MIXED USE (DMU) DISTRICT TO DOWNTOWN MIXED USE- CONDITIONAL OVERLAY-CENTRAL URBAN REDEVELOPMENT DISTRICT (DMU-CO-CURE) COMBINING DISTRICT.**

**BE IT ORDAINED BY THE CITY COUNCIL OF THE CITY OF AUSTIN:**

**PART 1.** The zoning map established by Section 25-2-191 of the City Code is amended to change the base district from general office (GO) district and downtown mixed use (DMU) district to downtown mixed use-conditional overlay-central urban redevelopment district (DMU-CO-CURE) combining district on the property described in Zoning Case No. C14-05-0040, on file at the Neighborhood Planning and Zoning Department, as follows:

Lots 1-6, Outlot 1, Division E, J.H. Robinson Subdivision, a subdivision in the City of Austin, Travis County, Texas, according to the map or plat of record in Plat Book 1, Page 28, of the Plat Records of Travis County, Texas (the "Property"),

locally known as 800 West 6<sup>th</sup> Street, 602, 606, and 700 West Avenue, in the City of Austin, Travis County, Texas, and generally identified in the map attached as Exhibit "A".

**PART 2.** The regulations for the Property within the boundaries of the CURE combining district established by this ordinance are modified as follows:

The maximum height of a building or structure or portion of a building or structure is 136 feet.

**PART 3.** The Property within the boundaries of the conditional overlay combining district established by this ordinance is subject to the following conditions:

A site plan or building permit for the Property may not be approved, released, or issued, if the completed development or uses of the Property, considered cumulatively with all existing or previously authorized development and uses, generate traffic that exceeds 2,000 trips per day.

C8/30

Except as specifically restricted under this ordinance, the Property may be developed and used in accordance with the regulations established for the downtown mixed use (DMU) base district and other applicable requirements of the City Code.

**PART 4.** This ordinance takes effect on August 8, 2005.

**PASSED AND APPROVED**

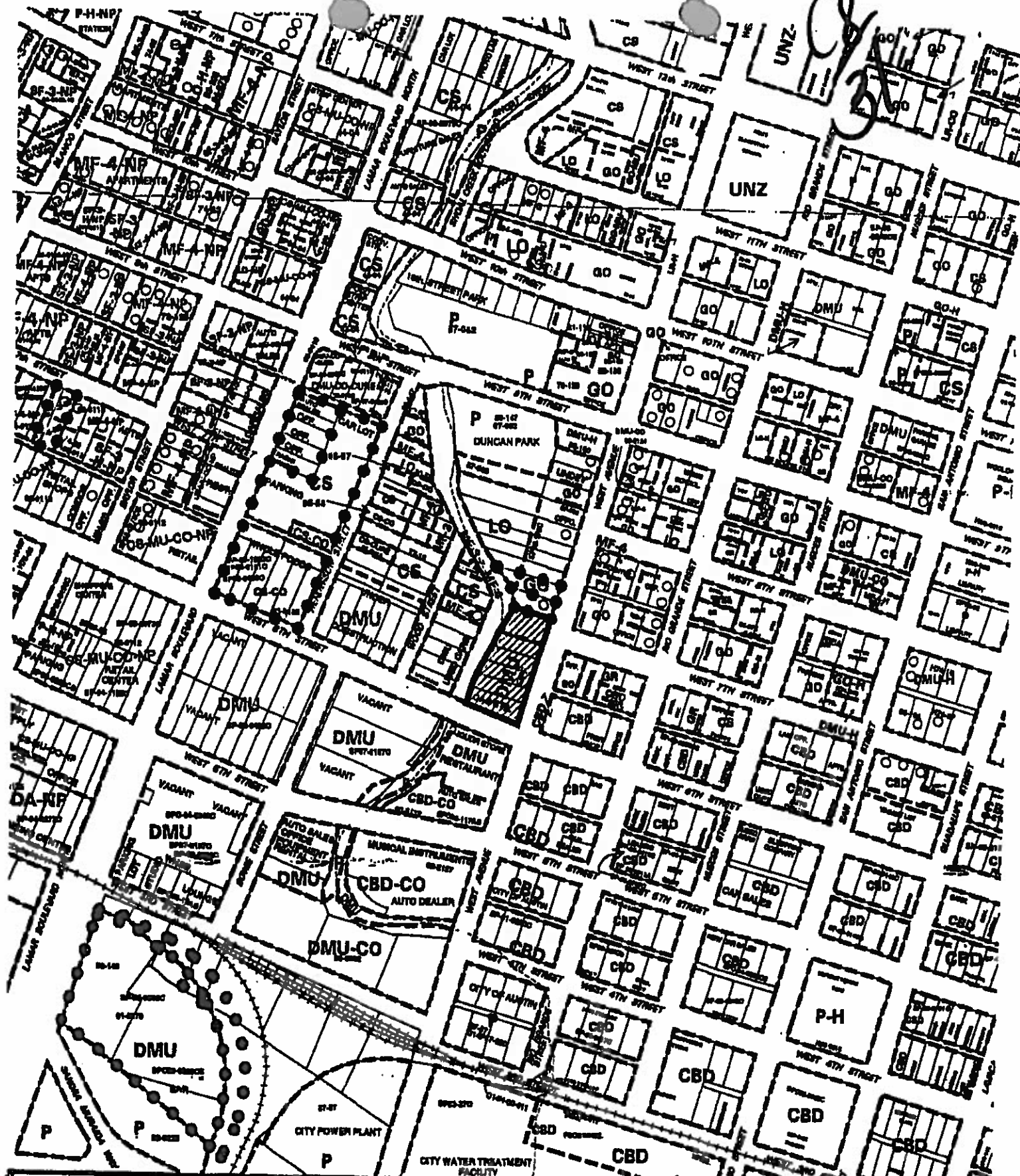
\_\_\_\_\_  
July 28, 2005

§  
§  
§

\_\_\_\_\_  
Will Wynn  
Mayor

**APPROVED:** \_\_\_\_\_  
David Allan Smith  
City Attorney

**ATTEST:** \_\_\_\_\_  
Shirley A. Brown  
City Clerk



	SUBJECT TRACT		<b>ZONING EXHIBIT A</b>  CASE #: C14-05-0040 ADDRESS: 800 W 8TH ST SUBJECT AREA (acres): 1.337 INTL: SM	CITY GRID REFERENCE NUMBER  H22
	PENDING CASE			
	ZONING BOUNDARY			
	CASE MGR: T. BOLT			



C8/32

**Date:** Feb 1, 2013  
**To:** Clark Patterson, Case Manager  
**CC:** Alex Reyna, P.E., PTOE | Bury+Partners  
**Reference:** TIA Final Memo C14-2012-0083 (Cirrus Logic)

Cirrus Logic development is located at the northwest corner of 6<sup>th</sup> Street and West Avenue in Austin, Texas. The development will include additional Single Tenant Office Building Space to existing land uses (currently under construction). The existing uses include Single Tenant Office, a Research and Development Center, and a Quality Restaurant. Access to the development will be provided by previously approved driveways on West Avenue. The proposed development is anticipated to be completed by 2013.

The Transportation Review Section has reviewed the Traffic Impact Analysis for the Cirrus Logic dated June, 2012 and revised in October, 2012, prepared by Alex Reyna, P.E. of Bury and Partners and offer following comments:

### TRIP GENERATION

Based on the standard trip generation rates established by the Institute of Transportation Engineers (ITE), the development will generate approximately 3,124 unadjusted average daily trips (ADT) and 2,812 adjusted ADT upon build out. The table below shows the adjusted trip generation by land uses for the proposed development.

SUMMARY OF ADJUSTED DAILY AND PEAK HOUR TRIPS						
Proposed Land Use	Size (SF)	24-Hour Volume	AM Peak Hour		PM Peak Hour	
			Enter	Exit	Enter	Exit
Single Tenant Office	60,977	635	88	11	14	81
Research & Development Center	70,133	512	64	14	10	58
Quality Restaurant	10,394	842	0	0	47	23
Phase I Total		1,989	152	25	71	162
Single Tenant Office	79,023	823	113	14	19	104
Phase II Totals		823	113	14	19	104
Project Total		2,812	265	39	90	266



## ASSUMPTIONS

1. A transit reduction of ten percent was assumed for all site-generated trips, during each peak period.
2. A 2% annual growth rate was assumed for this project.

## EXISTING AND PLANNED ROADWAYS

**6<sup>th</sup> Street:** 6<sup>th</sup> Street is currently classified as a 4-lane one-way arterial which provides westbound movements in the vicinity of the project. There are no planned improvements for 6<sup>th</sup> Street. City of Austin traffic counts (2009) on 6<sup>th</sup> Street, west of Baylor Street (west of the project), recorded approximately 21,319 vehicles per day (vpd).

**5<sup>th</sup> Street:** 5<sup>th</sup> Street is currently classified as a 4-lane one-way arterial which provides eastbound movements in the vicinity of the project. There are no planned improvements for 5<sup>th</sup> Street. City of Austin 2011 traffic counts on 5<sup>th</sup> Street, west of Rio Grande Street, recorded approximately 19,492 vpd.

**West Avenue:** West Avenue is currently classified as a 2-lane undivided collector providing north-south movements in the vicinity of the project. Based on 24-hour bi-directional tube counts obtained by Bury in May 2012, the estimated average daily traffic (ADT) along West Avenue is 1,889 vpd.

## INTERSECTION LEVEL OF SERVICE (LOS)

The TIA analyzed the five (5) existing intersections and two (2) Proposed Site Driveways (Driveway B being the fourth approach to an existing intersection at 7<sup>th</sup> Street and West Avenue). The results are summarized in the table below:

INTERSECTION LEVEL OF SERVICE						
Intersection	2012 Existing LOS		2013 Forecasted LOS		2013 Site+ Forecasted LOS	
	AM	PM	AM	PM	AM	PM
5th Street and West Avenue	B	B	B	B	B	B
6th Street and West Avenue	B	B	B	B	B	C
7th Street/Driveway B and West Avenue	A	A	A	A	A	A
8th Street and West Avenue	A	A	A	A	A	A
9th Street and West Avenue	A	B	B	B	B	C
Driveway A and West Avenue					A	A

## RECOMMENDATIONS

C8/34

The intersection operates at an acceptable level of service upon build-out, therefore no improvements are recommended at this time.

1. City of Austin Transportation Department Signals Division has approved the TIA.
2. Development of this property should be limited to uses and intensities which will not exceed or vary from the projected traffic conditions assumed in the TIA, including peak hour trip generations, traffic distribution, roadway conditions, and other traffic related characteristics.

If you have any questions or require additional information, please contact me at 974-2219.



Sangeeta Jain, AICP  
Development Services Process Coordinator  
LUR Division, Planning and Development Review Dept.

**Patterson, Clark**

**From:** Ted Siff <[REDACTED]>  
**Sent:** Wednesday, January 16, 2013 10:23 PM  
**To:** Patterson, Clark  
**Cc:** Wesley Shackelford  
**Subject:** C14-2012-0083 - OANA & 706 West Ave HOA joint letter  
**Attachments:** Jt OANA West Ave HOA ltr re 602-702 West 1.16.13.pdf; Amanda Morrow 7.10.2012 ltr to Planning re zoning of Tract 1 and 2 to add 80m of office etc.pdf

C8/35

Dear Clark,

We have attached a joint letter from OANA and 706 West Ave HOA, as well as the July 10, 2012 letter from Armbrust & Brown which describes the applicant's original intended uses that generated this zoning request.

We respectfully request that you make both of the attached letters as well as this email message part of the backup for this Planning Commission agenda item.

The joint letter supersedes all previous communication our organizations have had with your office on this zoning case.

Please contact either of us if you have any questions.

**Ted Siff, President**  
**Original Austin Neighborhood Assn. (OANA)**  
[www.originalaustin.org](http://www.originalaustin.org)  
512-657-5414

and

**Wesley Shackelford, President**  
**706 West Avenue Association (706 West Ave HOA)**  
(512) 699-6683

**706 West Avenue Association**

**&**



C8  
36

**January 16, 2013**

Clark Patterson, Case Manager  
Planning & Development Review Department, City of Austin

RE: C14-2012-0083 - 800 W. 6th Street, 602, 604, 606, 700 and 702 West Avenue ("Property")  
Existing Zoning: DMU-CO-CURE & LO-GO  
Proposed Zoning: DMU-CURE & DMU

Dear Mr. Patterson, CoA Case Manager:

The boards of the directors of the 706 West Avenue Association (West Ave HOA) and the Original Austin Neighborhood Association (OANA) jointly submit this letter. Our organizations have met with the applicant's representatives numerous times since August of 2012 in an effort to come to a mutual agreement. We ask that this case be postponed because the applicant's intended uses for the Property relate to and anticipate the applicant's larger campus plan, which will involve other nearby properties that are not today a part of this current zoning case.

The applicant's initially requested us to support its plans to build a 79,133 square foot office building on this property (see attached July 10, 2012 letter from Armbrust & Brown), which uses we supported. However, the applicant's plans have evolved into a larger concept. They now desire rezoning in order to build a large central parking garage intended to serve several existing and future office buildings apparently. The applicant has acquired at least two other properties nearby and has expressed its desire to plan a campus for its employees as close to its existing office headquarters building as possible.

We believe the proposed rezoning for the applicant's current intended use should be evaluated along with applicant's additional planned developments nearby in order to fairly evaluate this rezoning request. West Ave HOA and OANA share common goals in this respect and want to forge a collaborative relationship with the applicant that will lead to a greater common outcome ([click here to view the OANA goals](#)).

Therefore, West Ave HOA and OANA respectfully request that the Planning Commission direct the applicant, West Ave HOA and OANA to defer action on this current zoning request, and ask that the applicant meet and aggressively explore a campus plan concept that meets the applicant's objectives while preserving and enhancing our neighborhood's objectives, and reschedule this agenda item to be considered substantively at its February 12<sup>th</sup> meeting.

Sincerely,

and

Ted Siff, OANA President

**OANA Board of Directors**

**Ted Siff, President, Albert Stowell, Treasurer**  
**Blake Tollett, Secretary, Karen Armstrong, Tom Borders**  
**Ray Canfield, Rick Hardin, John Horton, Paul Isham**  
**Perry Lorenz, Bill Schnell**

**Post Office Box 1282**

**Austin, TX 78767**

**[www.originalaustin.org](http://www.originalaustin.org)**

Wesley Shackelford, West Ave HOA, President

**West Ave HOA Board of Directors**

**Wesley Shackelford, President, Mark Holzbach,**  
**Treasurer & Secretary, Karen Armstrong,**  
**Joe Bryson, Darren & Michelle Crystal,**  
**Dana Friis-Hansen, John McCall**

**706 West Avenue**  
**Austin, TX 78701**





C8/A  
3

SOCIAL  
KNOWLEDGEABLE  
INFLUENTIAL

March 6, 2013

Mitchell McGovern  
President

Pamela Power  
Vice President

Amber Gugino  
Secretary

Jacob Dirr  
Treasurer

Matt Easterling

Cid Galindo

Jude Galligan

Warren James

Barry C. Lewis

Diana Nogueira

Fred Schmidt

Meredith Powell

Kristina Witt

Clark Patterson and Michael Knox  
Planning & Development Review  
City of Austin

**RE: Cirrus Logic – Rezoning Item C14-2012-0083**

Dear Mr. Patterson:

The Downtown Austin Neighborhood Association ("DANA") addresses you to express its support for the position of the Original Austin Neighborhood Association ("OANA") regarding this requested rezoning.

DANA acknowledges Cirrus Logic's past support of efforts to reclaim and beautify Shoal Creek and wishes Cirrus every success. We urge Cirrus to continue to work closely with the leadership of OANA.

However, in light of the acquisition by Cirrus of multiple parcels within and adjacent to OANA, we respectfully urge the City to accede to OANA's request and require Cirrus to create a comprehensive plan for the development of the Cirrus parcels.

Sincerely,

Mitchell McGovern  
President  
Downtown Austin Neighborhood Association

cc: City of Austin Planning Commission  
City of Austin Downtown Commission  
Mr. Ted Siff, President, OANA

## PUBLIC HEARING INFORMATION

This zoning/rezoning request will be reviewed and acted upon at two public hearings: before the Land Use Commission and the City Council. Although applicants and/or their agent(s) are expected to attend a public hearing, you are not required to attend. However, if you do attend, you have the opportunity to speak FOR or AGAINST the proposed development or change. You may also contact a neighborhood or environmental organization that has expressed an interest in an application affecting your neighborhood.

During its public hearing, the board or commission may postpone or continue an application's hearing to a later date, or may evaluate the City staff's recommendation and public input forwarding its own recommendation to the City Council. If the board or commission announces a specific date and time for a postponement or continuation that is not later than 60 days from the announcement, no further notice is required.

During its public hearing, the City Council may grant or deny a zoning request, or rezone the land to a less intensive zoning than requested but in no case will it grant a more intensive zoning.

However, in order to allow for mixed use development, the Council may add the MIXED USE (MU) COMBINING DISTRICT to certain commercial districts. The MU Combining District simply allows residential uses in addition to those uses already allowed in the seven commercial zoning districts. As a result, the MU Combining District allows the combination of office, retail, commercial, and residential uses within a single development.

For additional information on the City of Austin's land development process, visit our website:

[www.austintexas.gov](http://www.austintexas.gov)

Written comments must be submitted to the board or commission (or the contact person listed on the notice) before or at a public hearing. Your comments should include the board or commission's name, the scheduled date of the public hearing, and the Case Number and the contact person listed on the notice.

Case Number: C14-2012-0083

Contact: Clark Patterson, 512-974-7691

Public Hearing: Dec 11, 2012, Planning Commission

Jan 17, 2013, City Council

BEN PROCTOR

Your Name (please print)

705 W. 8th

Your address(es) affected by this application

Ben Proctor

Signature

Daytime Telephone: 294-9712

12/4/12

Date

☐ I am in favor  
☒ I object

Comments: Applicant is seeking to vacate existing CDS. COS) WERE INSTITUTED, HOWEVER FOR A PURPOSE. MY CONCERNS ARE: 1) What SPECIFICALLY ARE THE COS, 2) WERE COS KNOWN AT TIME OF PROPERTY PURCHASE, 3) WHY ARE COS NOW UNACCEPTABLE AND 4) What IS IMPACT TO NEARBY PROPERTIES.

If you use this form to comment, it may be returned to:

City of Austin

Planning & Development Review Department

Clark Patterson

P. O. Box 1088

Austin, TX 78767-8810

CP  
38

## PUBLIC HEARING INFORMATION

This zoning/rezoning request will be reviewed and acted upon at two public hearings: before the Land Use Commission and the City Council. Although applicants and/or their agent(s) are expected to attend a public hearing, you are not required to attend. However, if you do attend, you have the opportunity to speak FOR or AGAINST the proposed development or change. You may also contact a neighborhood or environmental organization that has expressed an interest in an application affecting your neighborhood.

During its public hearing, the board or commission may postpone or continue an application's hearing to a later date, or may evaluate the City staff's recommendation and public input forwarding its own recommendation to the City Council. If the board or commission announces a specific date and time for a postponement or continuation that is not later than 60 days from the announcement, no further notice is required.

During its public hearing, the City Council may grant or deny a zoning request, or rezone the land to a less intensive zoning than requested but in no case will it grant a more intensive zoning.

However, in order to allow for mixed use development, the Council may add the MIXED USE (MU) COMBINING DISTRICT to certain commercial districts. The MU Combining District simply allows residential uses in addition to those uses already allowed in the seven commercial zoning districts. As a result, the MU Combining District allows the combination of office, retail, commercial, and residential uses within a single development.

For additional information on the City of Austin's land development process, visit our website:

[www.austintexas.gov](http://www.austintexas.gov)

Written comments must be submitted to the board or commission (or the contact person listed on the notice) before or at a public hearing. Your comments should include the board or commission's name, the scheduled date of the public hearing, and the Case Number and the contact person listed on the notice.

Case Number: C14-2012-0083

Contact: Clark Patterson, 512-974-7691

Public Hearing: Dec 11, 2012, Planning Commission

Jan 17, 2013, City Council

Your Name (please print) James Powell

☐ I am in favor  
☒ I object

Your address(es) affected by this application 115 West Ave; 117 West Ave

Signature DEC 11, 2012 Date

Daytime Telephone: 477-9939

Comments: I object

If you use this form to comment, it may be returned to:

City of Austin

Planning & Development Review Department

Clark Patterson

P. O. Box 1088

Austin, TX 78767-8810

C8  
39



## PUBLIC HEARING INFORMATION

This zoning/rezoning request will be reviewed and acted upon at two public hearings: before the Land Use Commission and the City Council. Although applicants and/or their agent(s) are expected to attend a public hearing, you are not required to attend. However, if you do attend, you have the opportunity to speak FOR or AGAINST the proposed development or change. You may also contact a neighborhood or environmental organization that has expressed an interest in an application affecting your neighborhood.

During its public hearing, the board or commission may postpone or continue an application's hearing to a later date, or may evaluate the City staff's recommendation and public input forwarding its own recommendation to the City Council. If the board or commission announces a specific date and time for a postponement or continuation that is not later than 60 days from the announcement, no further notice is required.

During its public hearing, the City Council may grant or deny a zoning request, or rezone the land to a less intensive zoning than requested but in no case will it grant a more intensive zoning.

However, in order to allow for mixed use development, the Council may add the MIXED USE (MU) COMBINING DISTRICT to certain commercial districts. The MU Combining District simply allows residential uses in addition to those uses already allowed in the seven commercial zoning districts. As a result, the MU Combining District allows the combination of office, retail, commercial, and residential uses within a single development.

For additional information on the City of Austin's land development process, visit our website:

[www.austintexas.gov](http://www.austintexas.gov)

Written comments must be submitted to the board or commission (or the contact person listed on the notice) before or at a public hearing. Your comments should include the board or commission's name, the scheduled date of the public hearing, and the Case Number and the contact person listed on the notice.

Case Number: C14-2012-0083

Contact: Clark Patterson, 512-974-7691

Public Hearing: Dec 11, 2012, Planning Commission  
Jan 17, 2013, City Council

Karen L. Armstrong  
Your Name (please print)

706 B West Ave

Your address(es) affected by this application

Karen L. Armstrong

Signature

12-1-2012

Date

Daytime Telephone: 512-762-0966

Comments: We did not object to Carrishley's first change zone request b/c they PROMISED Not to build what they plan to now! My condo has already suffered cracks, dust, shifting, noise & lack of view & sunlight. This new bldg will block 100% of the daylight from my unit & significantly reduce the value of this once prime residential location. All the items promised by Carrishley's logic have been cancelled. They do not need to further degrade the neighborhood for longtime residence!

If you use this form to comment, it may be returned to:

City of Austin

Planning & Development Review Department

Clark Patterson

P. O. Box 1088

Austin, TX 78767-8810

*CP*  
*HO*

Austin, 10, Dec, 2012

I object to cure on the land currently zoned  
LO and GO ("Track 2" in the city notice)  
because I object to any new construction there  
that would exceed 60 feet in height.

C8  
H1

Don Dixon