

# City of Austin Transportation Fatalities in 2012

## *Final Report*

Austin City Council  
Comprehensive Planning & Transportation Committee

Austin Transportation Department  
Austin Police Department  
Public Works Department

May 6, 2013



# Report Timeline

---

- January 17, 2013:

Council Resolution to prepare fatality report

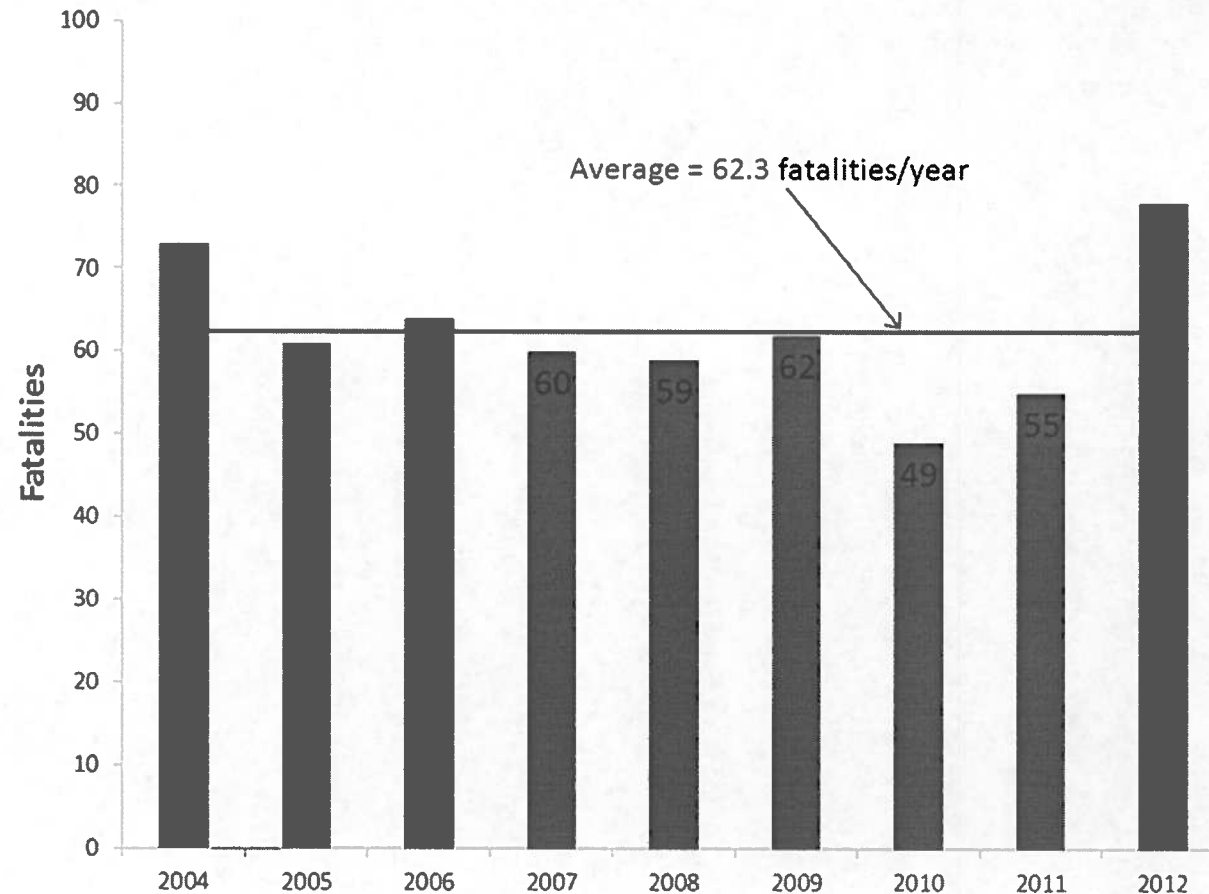
- March 4, 2013:

Submitted Interim Status Report to Council

- April 15, 2013:

Submitted Final Report to Council

# Austin Transportation Fatality Trends

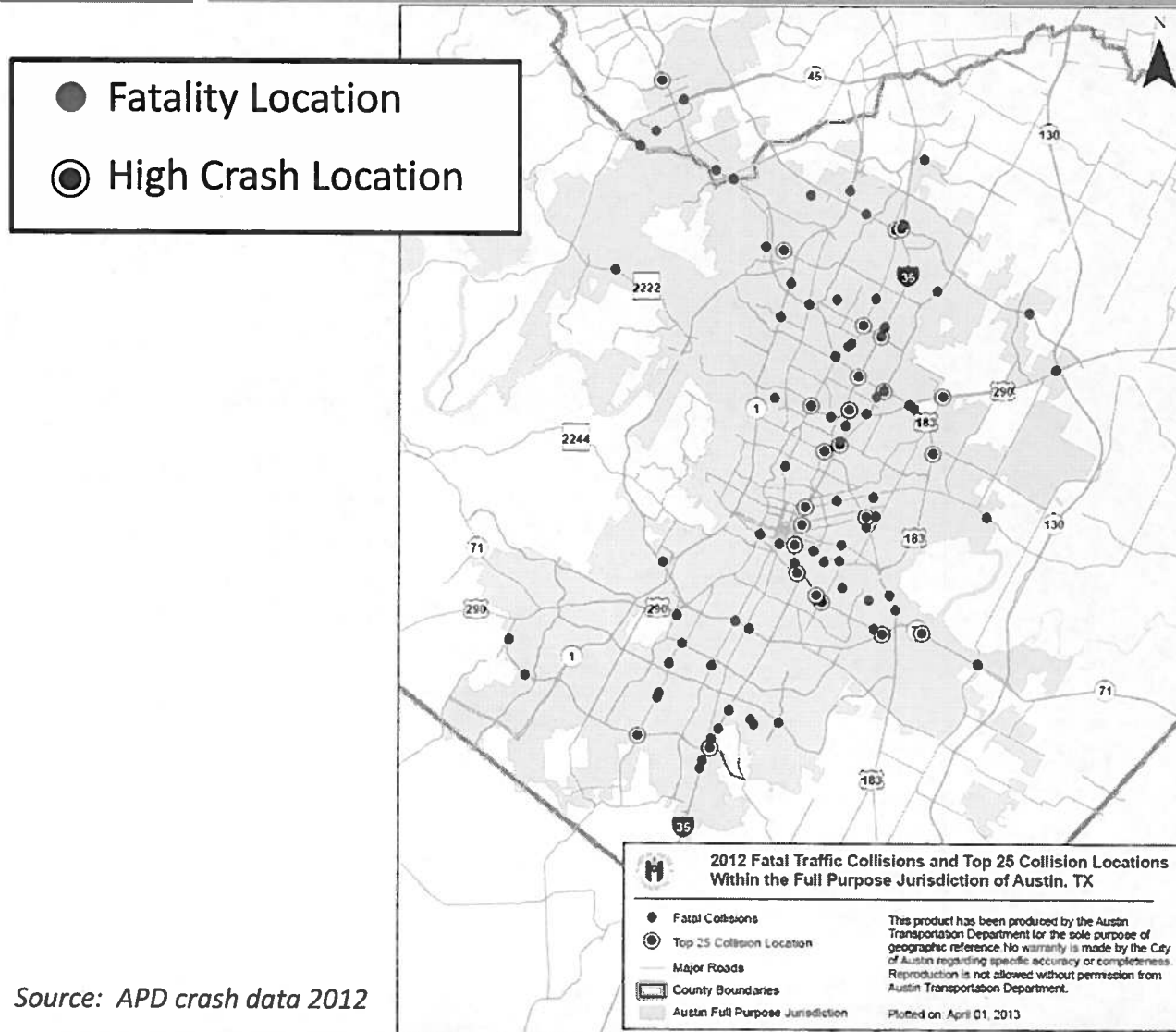


## Fatalities

- 78 transportation fatalities in 2012
- 42% increase from 2011 to 2012

Source: APD crash data 2012

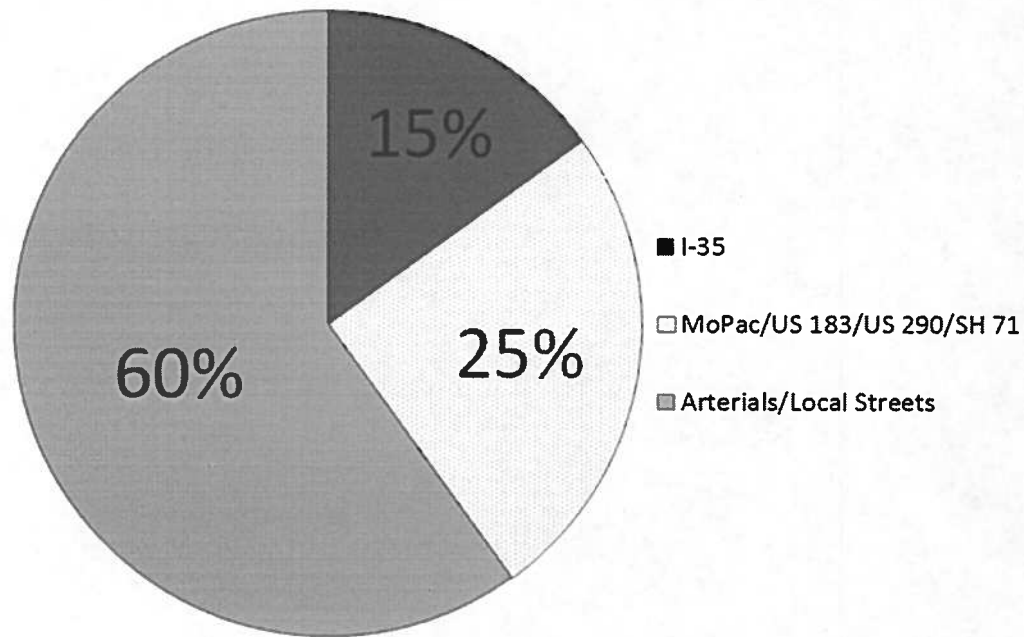
# Where



Source: APD crash data 2012

- Fatalities distributed across Austin
- Top crash locations:
  - I-35
  - US 183
  - Lamar Blvd.
  - Riverside Dr.
  - SH 71

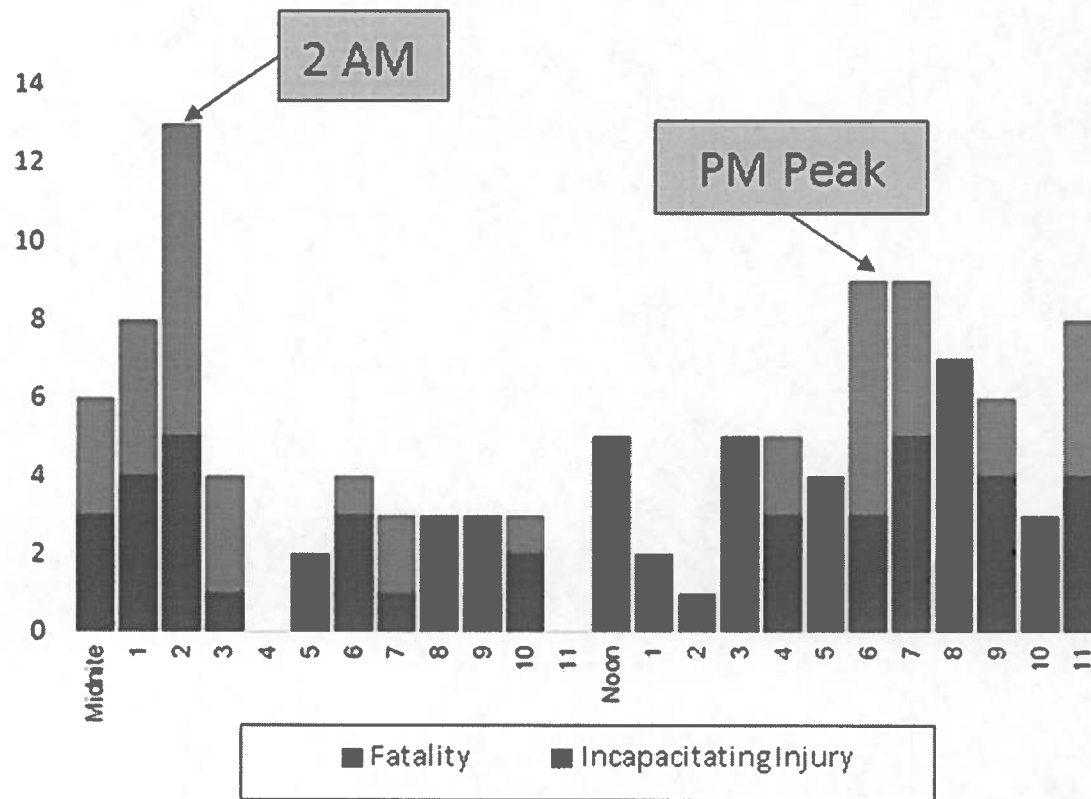
# Where – Roadway Type



- 60% on arterial streets
- 40% on freeways/highways

Source: APD crash data 2012

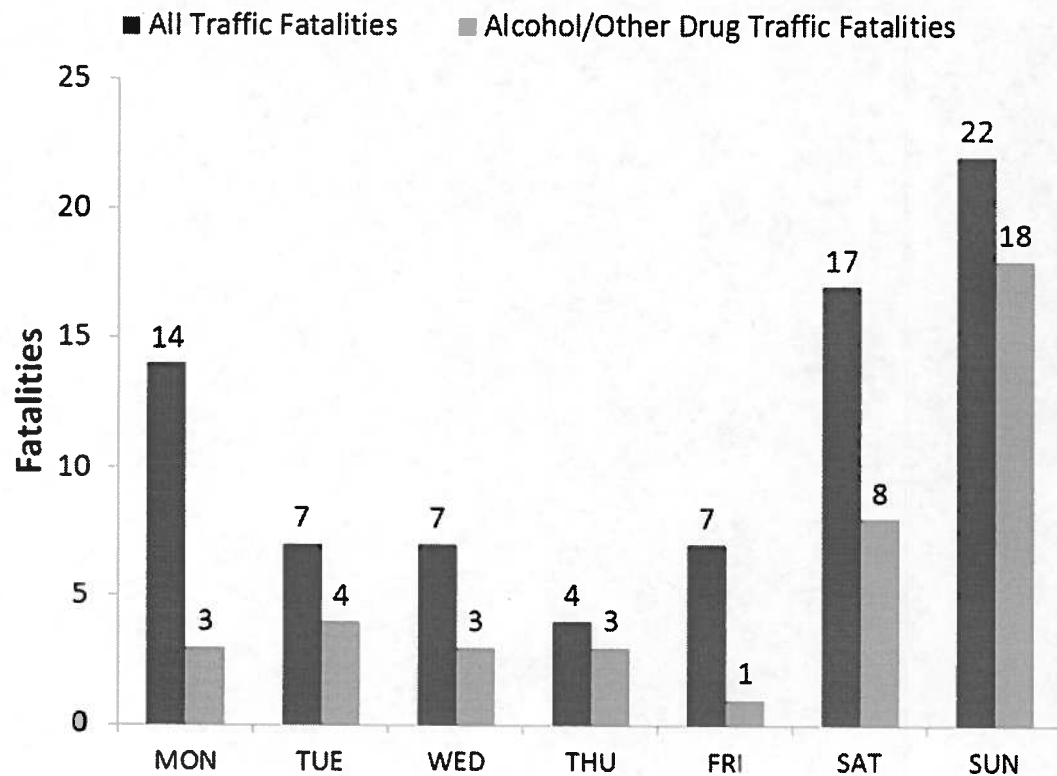
# When – Time of Day



- Crash severity began to increase during evening drive time and into early morning hours

Source: APD, 2012 Safety Summit, data for January – August 2012

# When – Day of Week



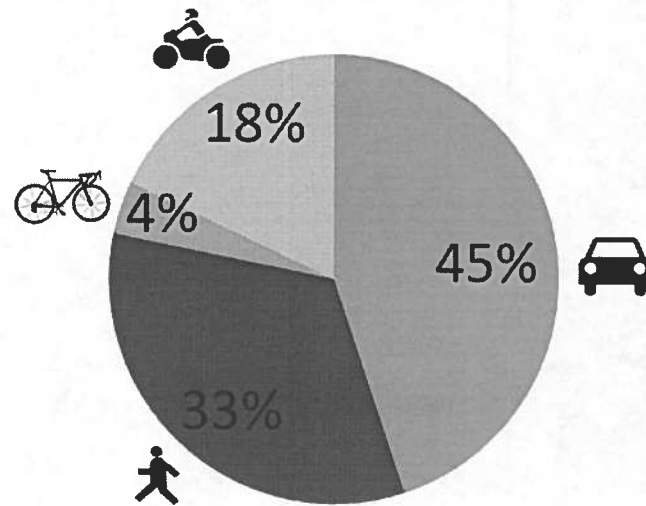
- Weekends were when most fatalities occurred

AND

- When most were due to impairment (*alcohol + other drugs*)

Source: APD crash data 2012

# Who

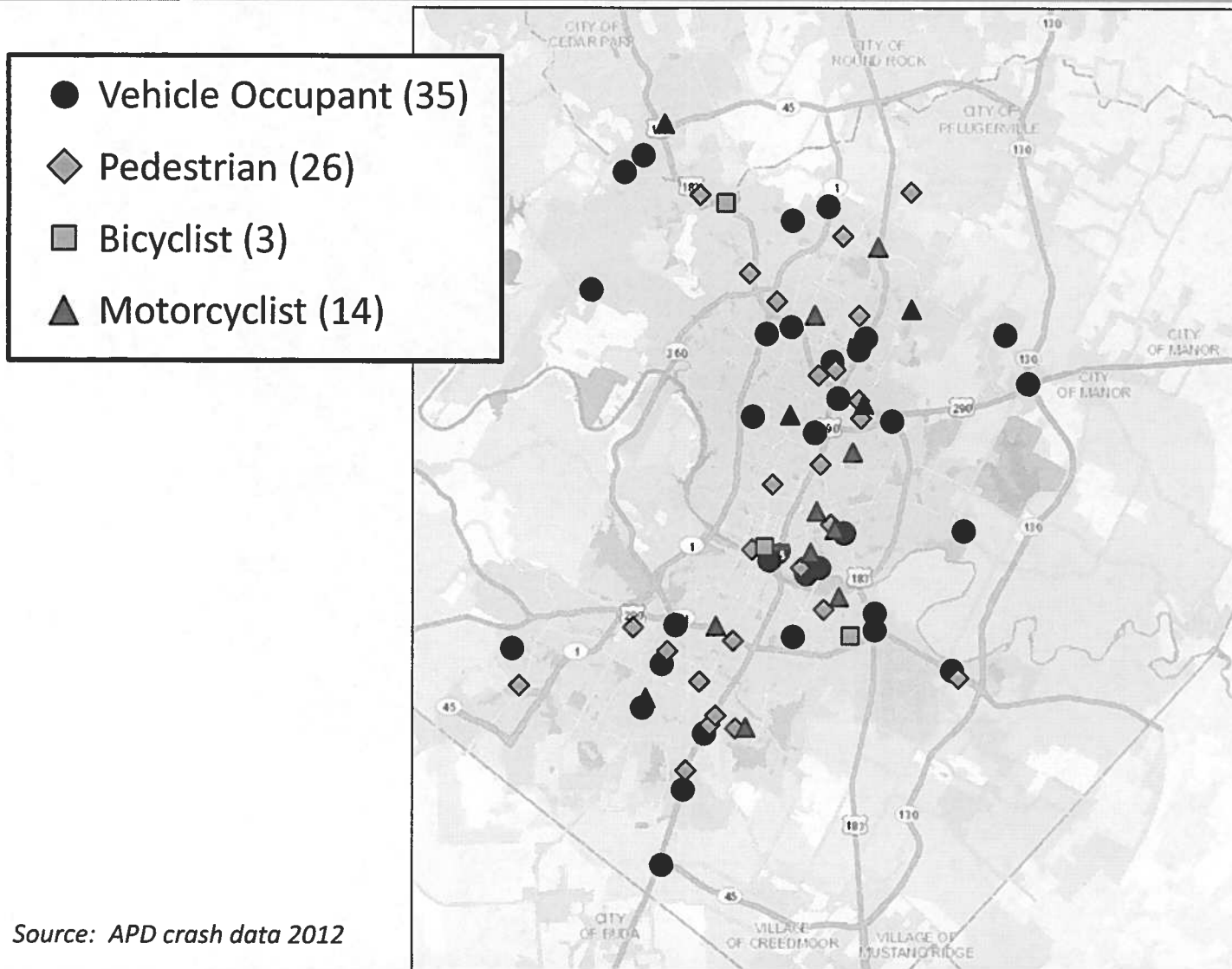


- Fatalities occurred across modes
- 1 out of 3 fatalities involved a pedestrian

Transportation System Users	2012 Fatalities
Motor Vehicle Occupants	35
Pedestrians	26
Motorcyclists	14
Bicyclists	3
<b>Total</b>	<b>78</b>

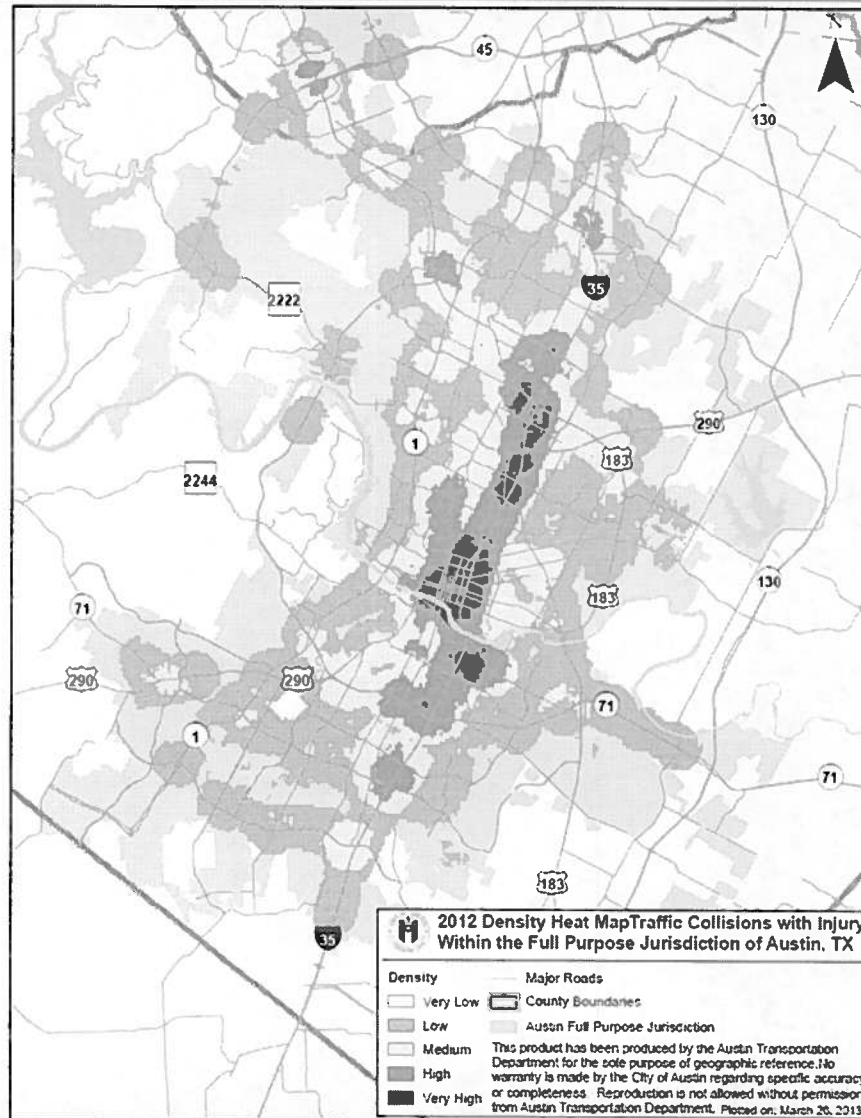
Source: APD crash data 2012

# Who – Fatality Locations



Source: APD crash data 2012

# Challenges: I-35

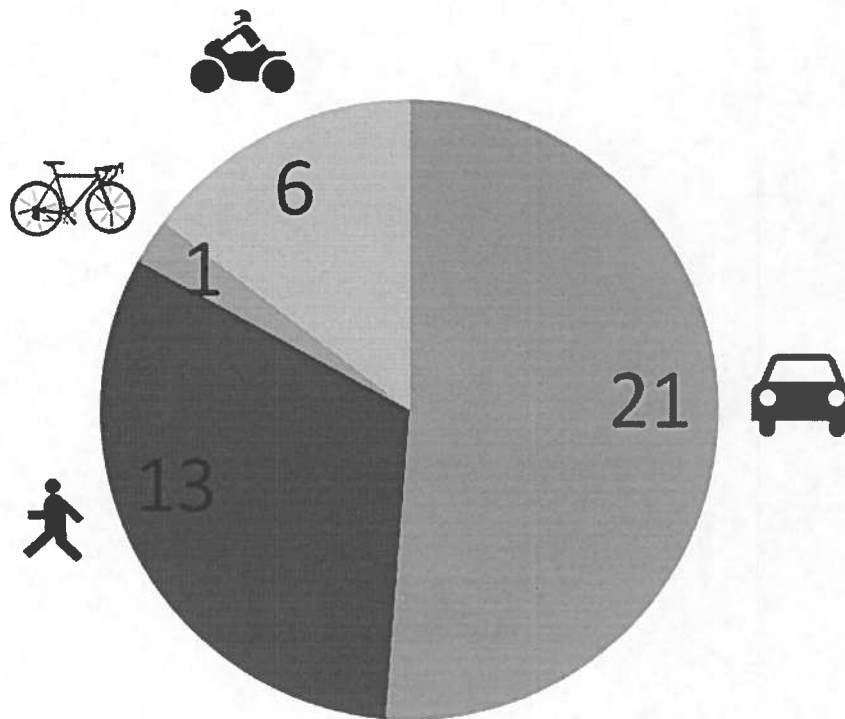


- Higher severity crash locations:
  - I-35
  - Downtown
  - US 183

Source: APD crash data 2012

# Challenges: Impaired Traveling

## Who Was Impaired in the Fatality



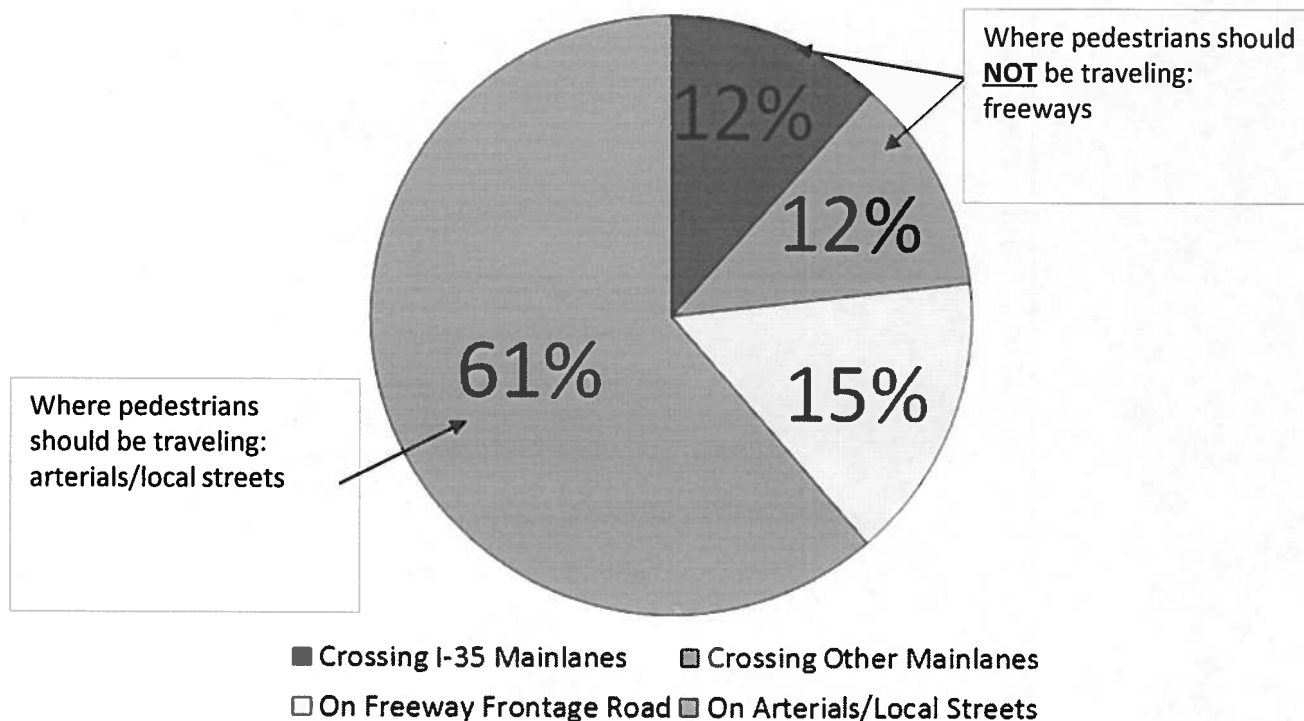
- 51% of all traffic fatalities involved alcohol or drugs
- 93% increase in impaired fatalities from 2011 to 2012
- 50% of the pedestrians killed were impaired

Source: APD crash data 2012

# Challenges:

## Pedestrians Crossing Freeway Mainlanes

### Pedestrian Fatalities by Roadway Type



- 6 (~25%) pedestrian fatalities occurred while attempting to cross freeway mainlanes
- 3 occurred while attempting to cross I-35
- 5 were impaired

Source: APD crash data 2012

# Existing Transportation Safety Initiatives

Engineering	Enforcement	Education	Encouragement	Evaluation
Fatality Studies	Increase Law Enforcement	Safe Routes to Schools	Safe Walk & Safe Bicycle Campaign	E Crash Software
FHWA Safety Countermeasures: Roundabouts, Corridor Access Management, Backplates w/Retro-reflective Borders, Enhanced Delineation + Friction for Horizontal Curves, Medians + Pedestrian Crossing Islands, Pedestrian Hybrid Beacons, Road Diets	No Refusal Initiatives	Child Safety Program	Safety Messages on Dynamic Message Signs	CAMPO Safety Study
	Increased Highway Enforcement	Car Seat Checks		Transportation Safety Summit
Annual Service Plan for Pavement Preventative Maintenance	Red Light Cameras	Safe Bicycling and Walking Campaign		Crossroads Coalition
School Safety	Traffic Enforcement Initiative	Traffic Skills 101 (for bicyclists)		Emergency Response
Accessible Pedestrian Signals		Defensive Cycling Course		AIMHigh Team
Sidewalk Construction		Austin Bright Cyclist Grant		
Pedestrian Focus City		Bicycle Map (safety info)		
Bicycle Facilities		Response to Citizen Requests for Traffic Control Devices		
311 Customer Service Requests				
Local Area Traffic Management				
Transportation Criteria Manual Revisions				

- The City is actively involved in more than 35 transportation safety initiatives

# Recommendations

---

1. Develop a Consolidated Mobility Safety Plan for the City of Austin
2. Pursue strategies to reduce impaired traveling in Austin
3. Continue support of the I-35 Corridor Development Program to address transportation safety along I-35
4. Increase access to crash data and crash analysis capabilities of City departments
5. Continue implementing the Existing Transportation Safety Initiatives
6. Prepare an annual transportation safety report to Council

# Next Steps

---

- Incorporate feedback from the Comprehensive Planning & Transportation Committee
- Move forward with recommendations based on feedback
- Continue coordinating with partners



# For More Information:

Karla Villalon, Public Information Manager

Austin Transportation Department

Office: (512) 974-7246

[Karla.Villalon@austintexas.gov](mailto:Karla.Villalon@austintexas.gov)