

United States Department of the Interior  
National Park Service

## National Register of Historic Places Continuation Sheet

Section PHOTO Page 34

Seaholm Plant  
Austin, Travis County, Texas

### PHOTO INVENTORY

#### SEAHOLM PLANT

800 WEST CESAR CHAVEZ STREET

AUSTIN, TRAVIS COUNTY, TEXAS

SASHA BERGHAUSEN—PHOTOGRAPHER (EXCEPT AS NOTED)

APRIL 2000 (EXCEPT AS NOTED)

ORIGINAL NEGATIVES ON FILE WITH THE TEXAS HISTORICAL COMMISSION (EXCEPT AS NOTED)

PHOTO 1 – Turbine Generator Building, principal façade (south elevation), camera facing north

PHOTO 2 – Water Intake Structure, south elevation, camera facing north from across Town Lake

PHOTO 3 – Oil Heating Plant, south elevation, camera facing north

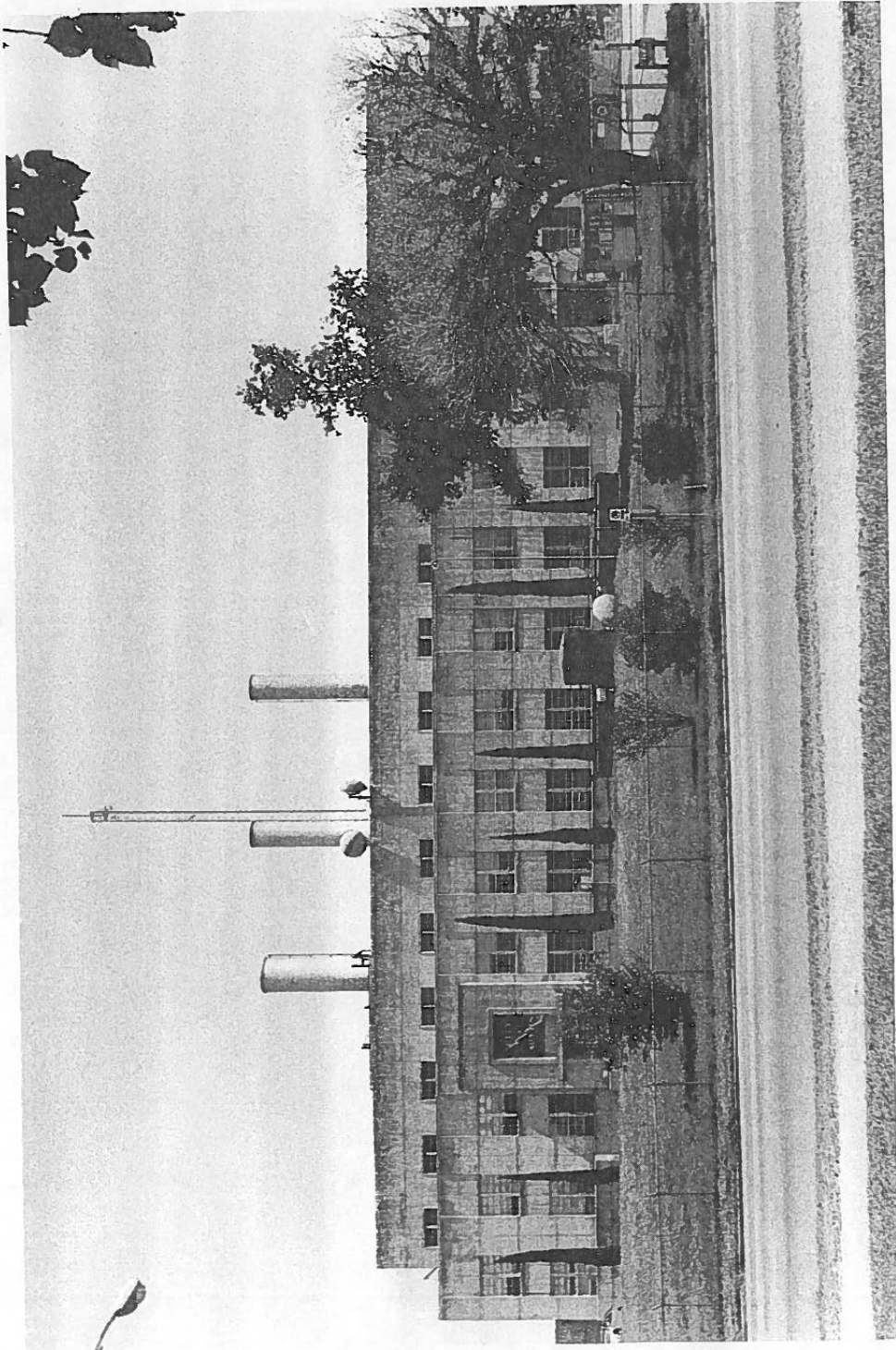
PHOTO 4 – Turbine Generator Building, detail of eastern entry into principal elevation, camera facing north

PHOTO 5 – Historic photo (unknown photographer), c. 1955, PICA 20128, Austin History Center, Austin Public Library

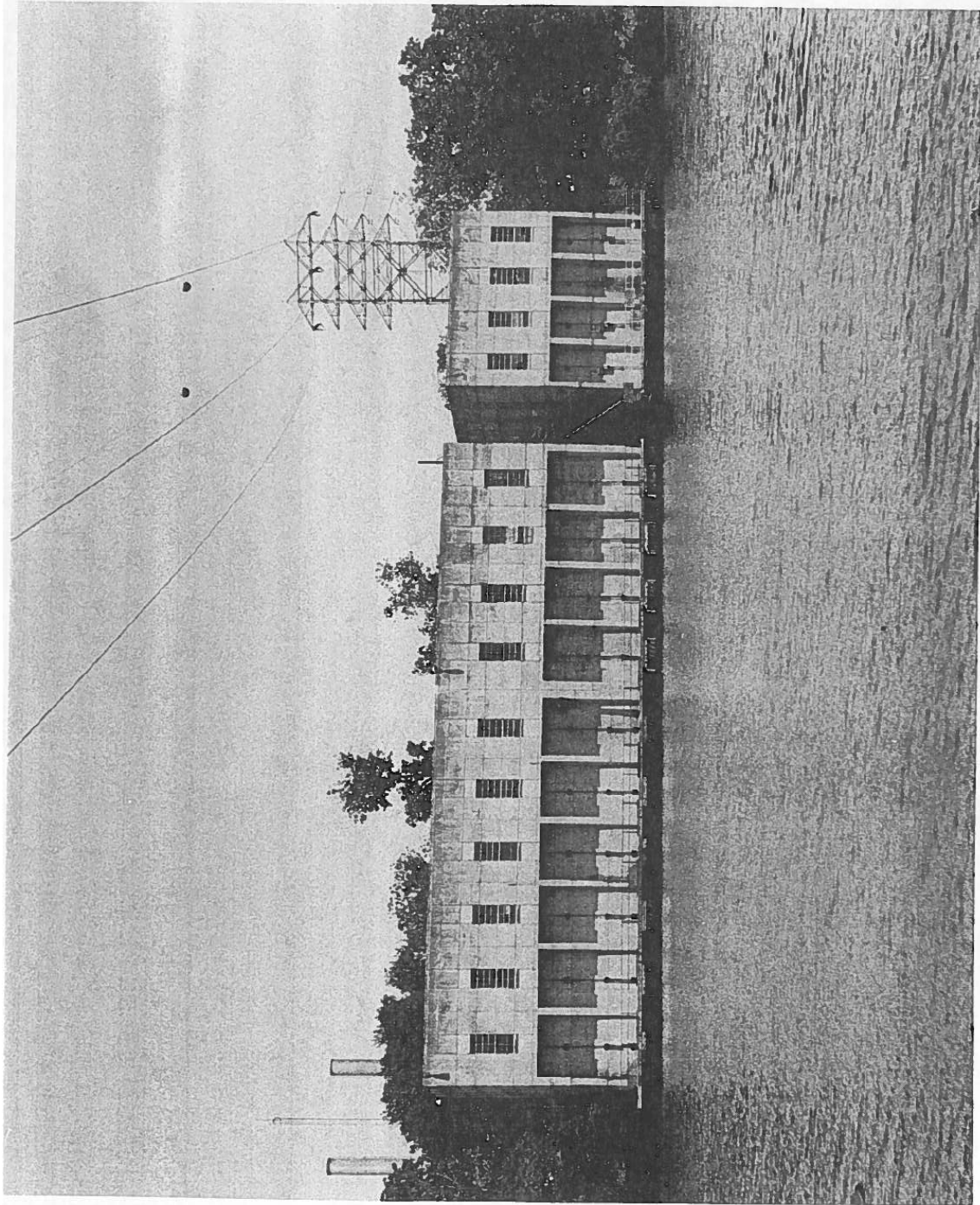
PHOTO 6 – Turbine Generator Building, oblique view of north and west elevations, camera facing southeast

PHOTO 7 – Turbine Generator Building, oblique view of south and east elevations, camera facing northwest

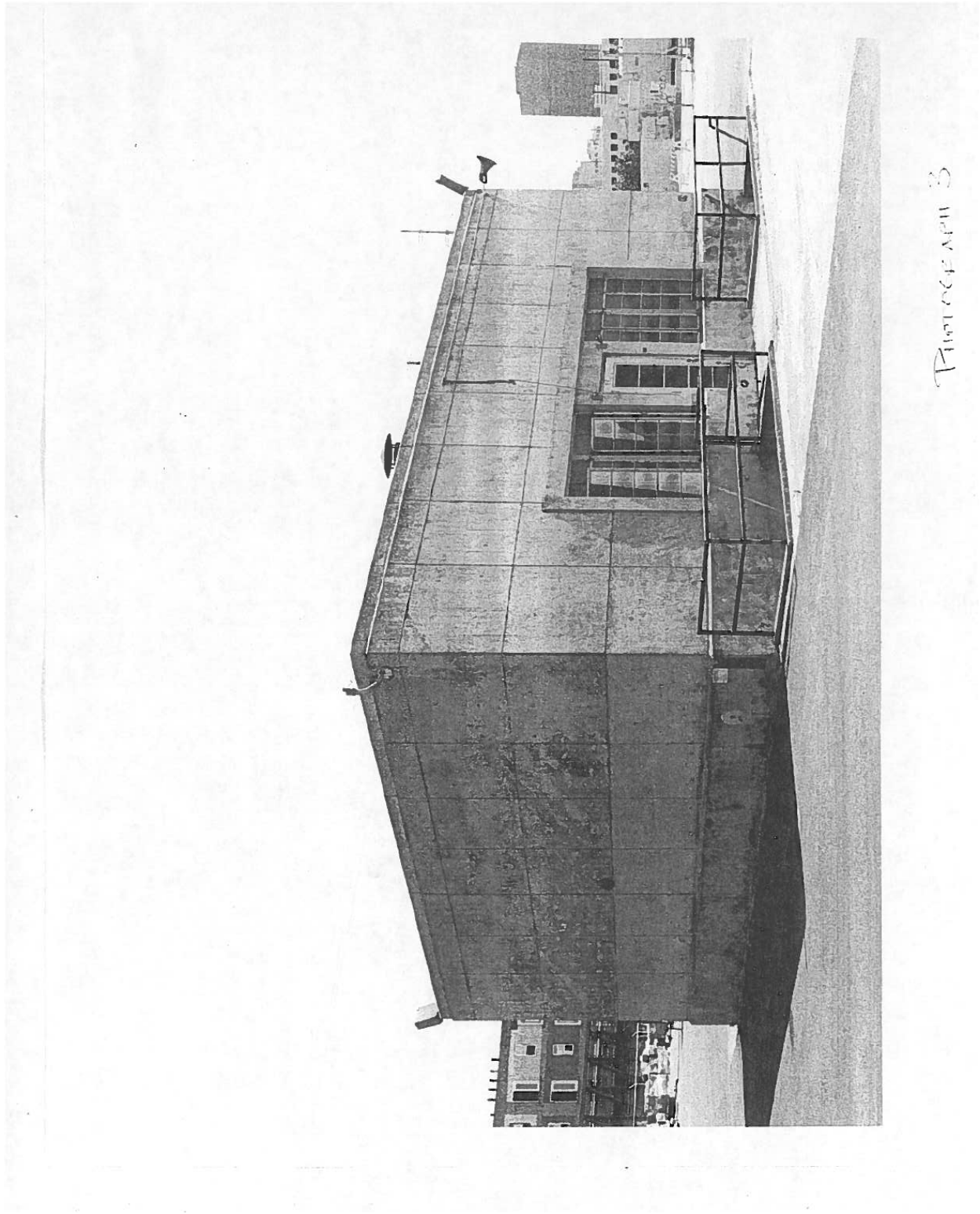
PHOTO 8 – Turbine Generator Building, Turbine Room interior, camera at west end looking east



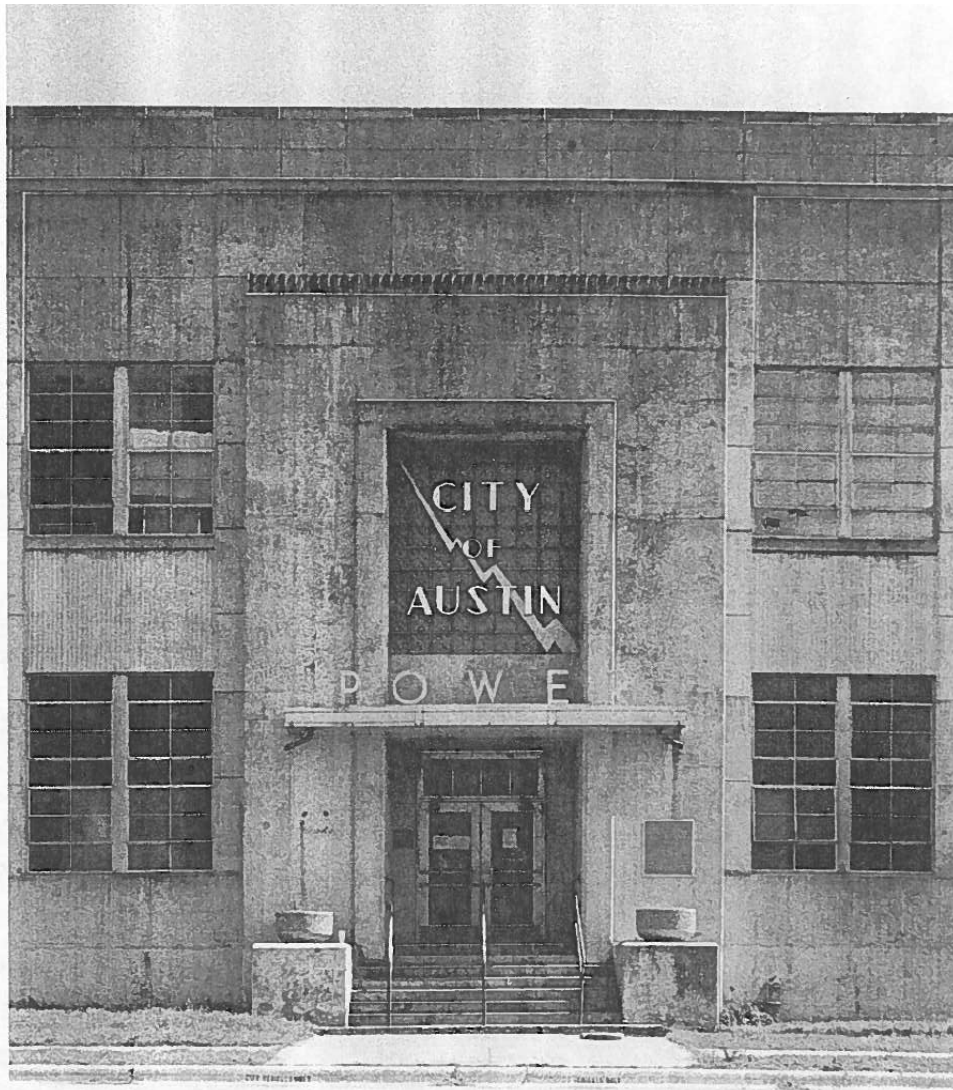
PHOTOGRAPH 1



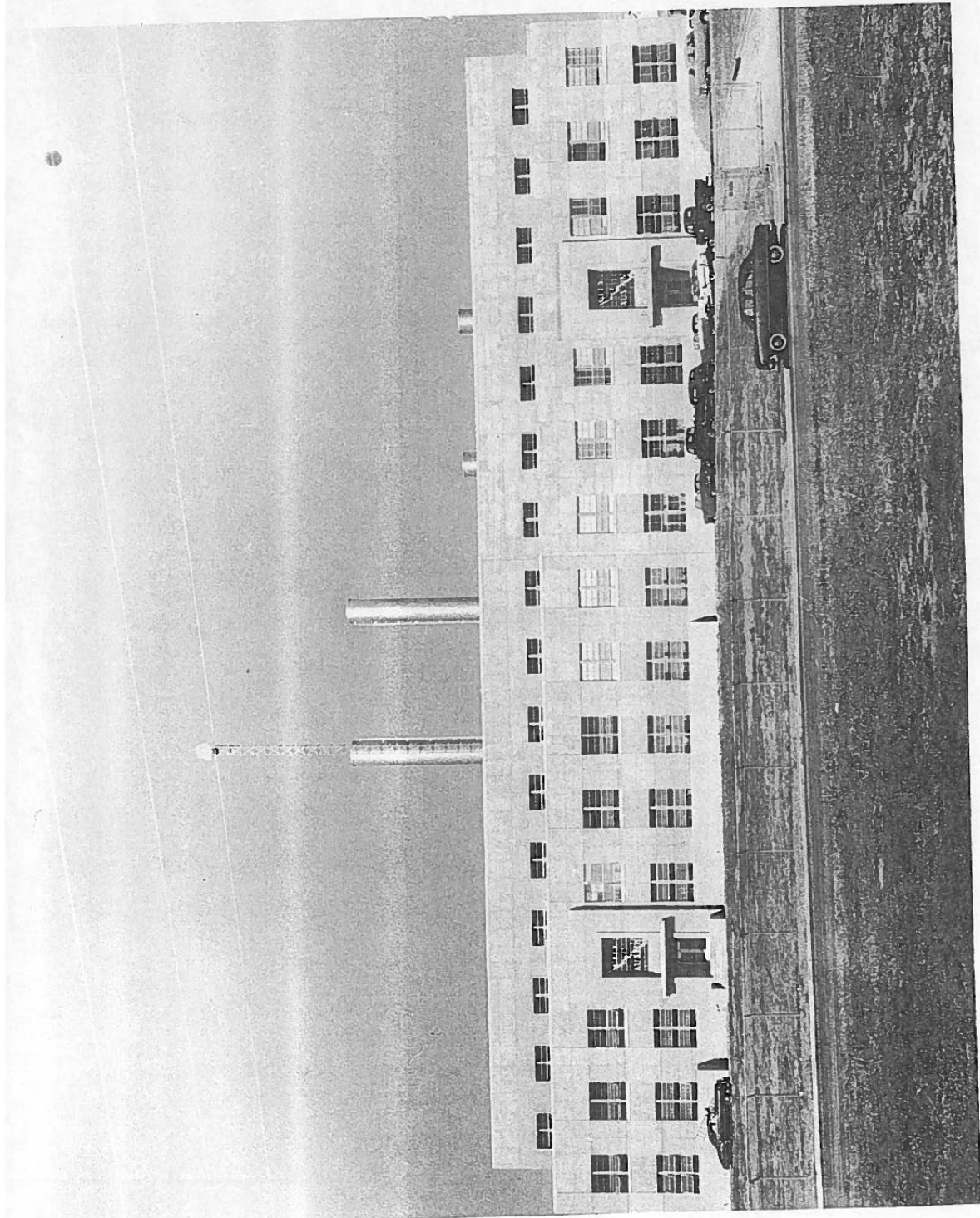
PIMOSECH 2



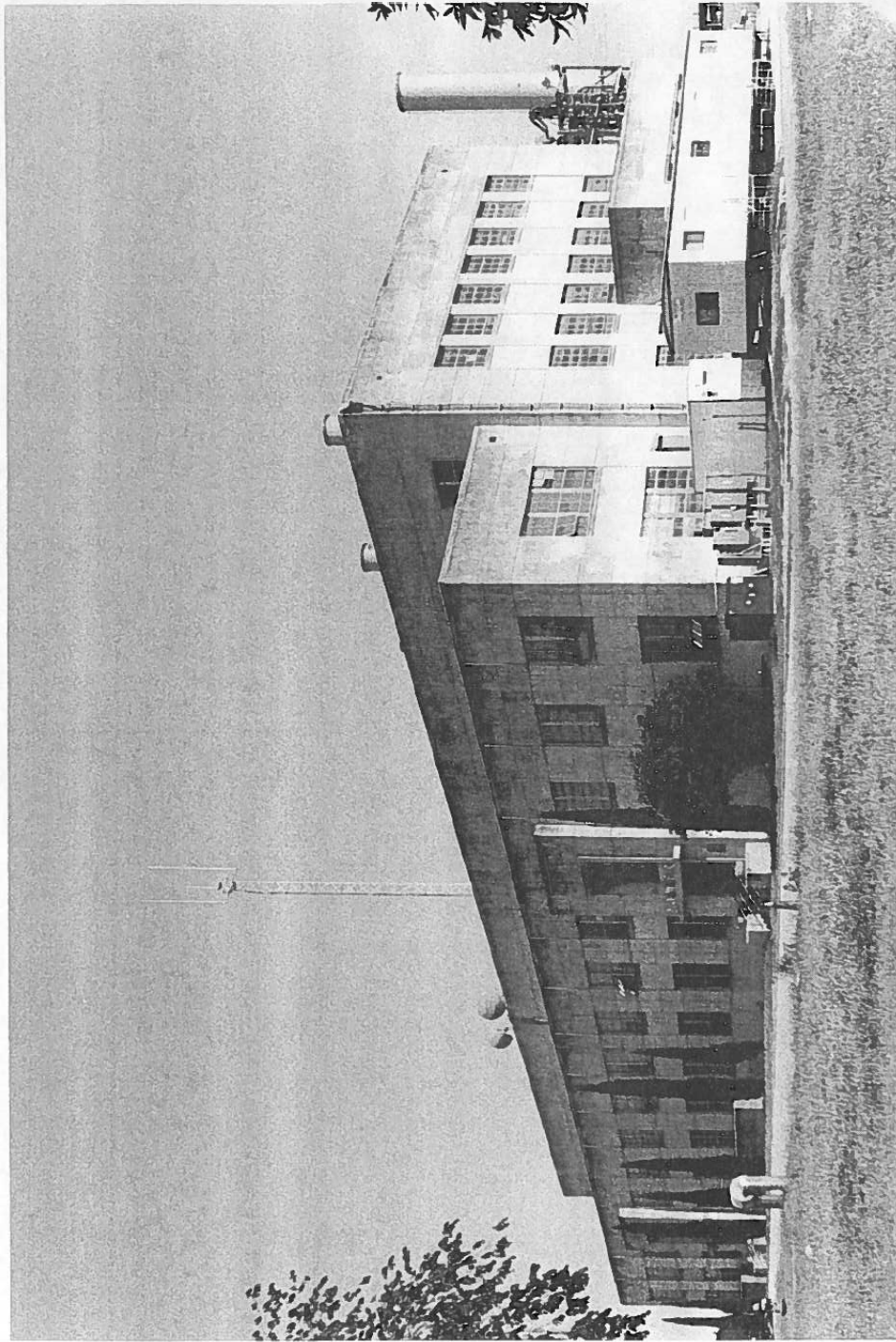




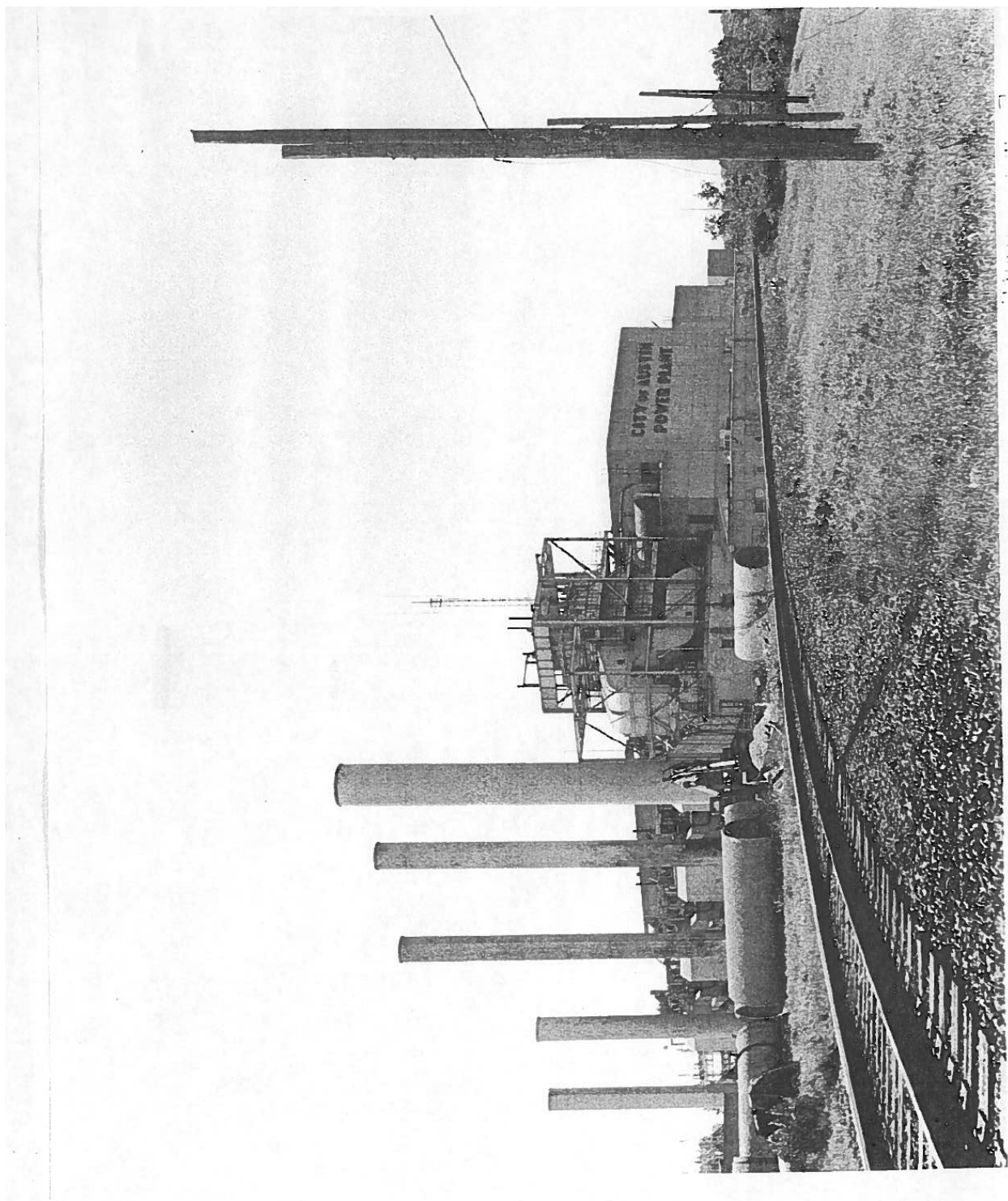
Panorama A



Thompson 5



Plant 6





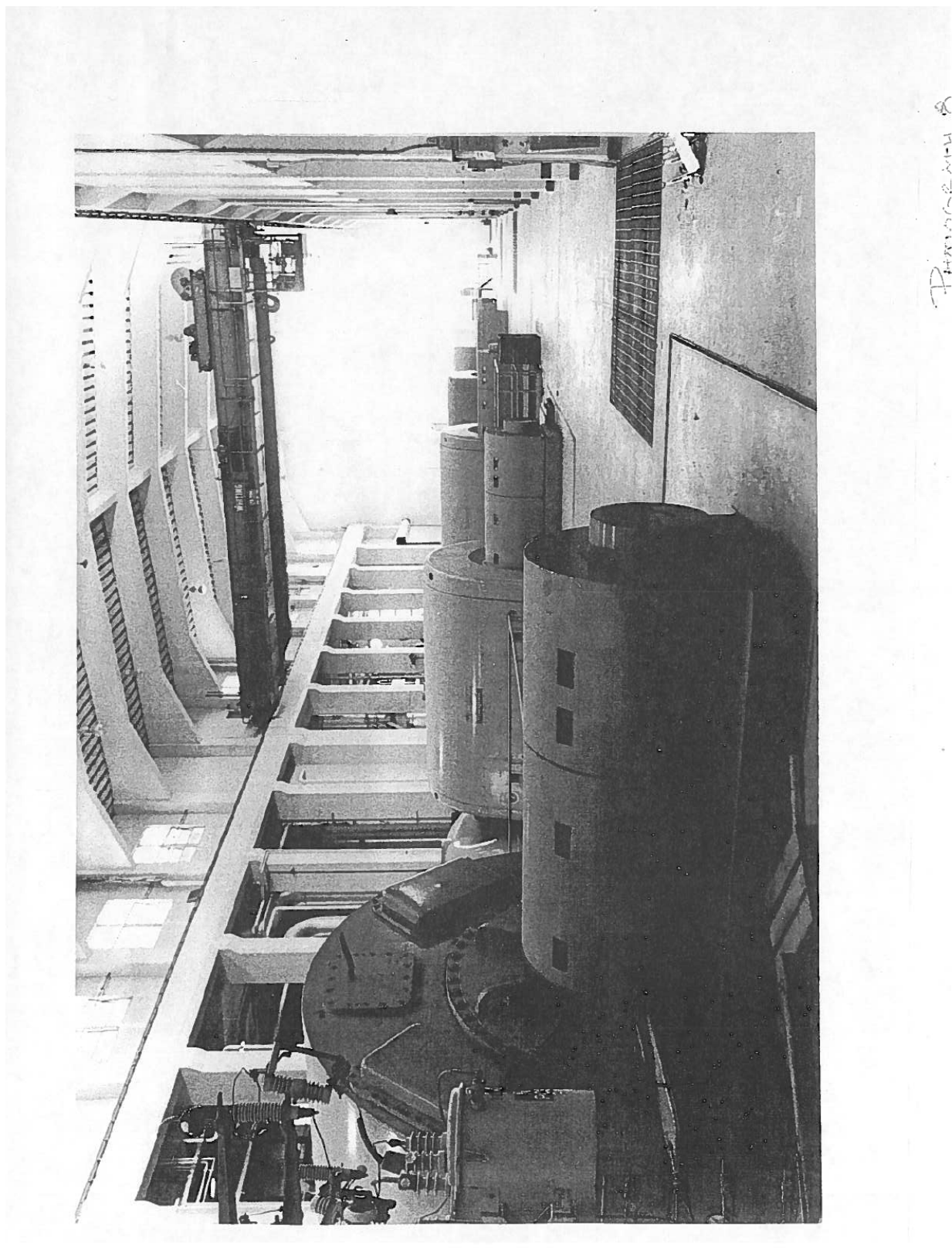


Figure 2.11.1