



# Auditorium Shores Improvements

City Council Briefing

Parks and Recreation Department

Jesse Vargas, Assistant Director

May 23, 2013



# Downtown View of Auditorium Shores and Butler Park







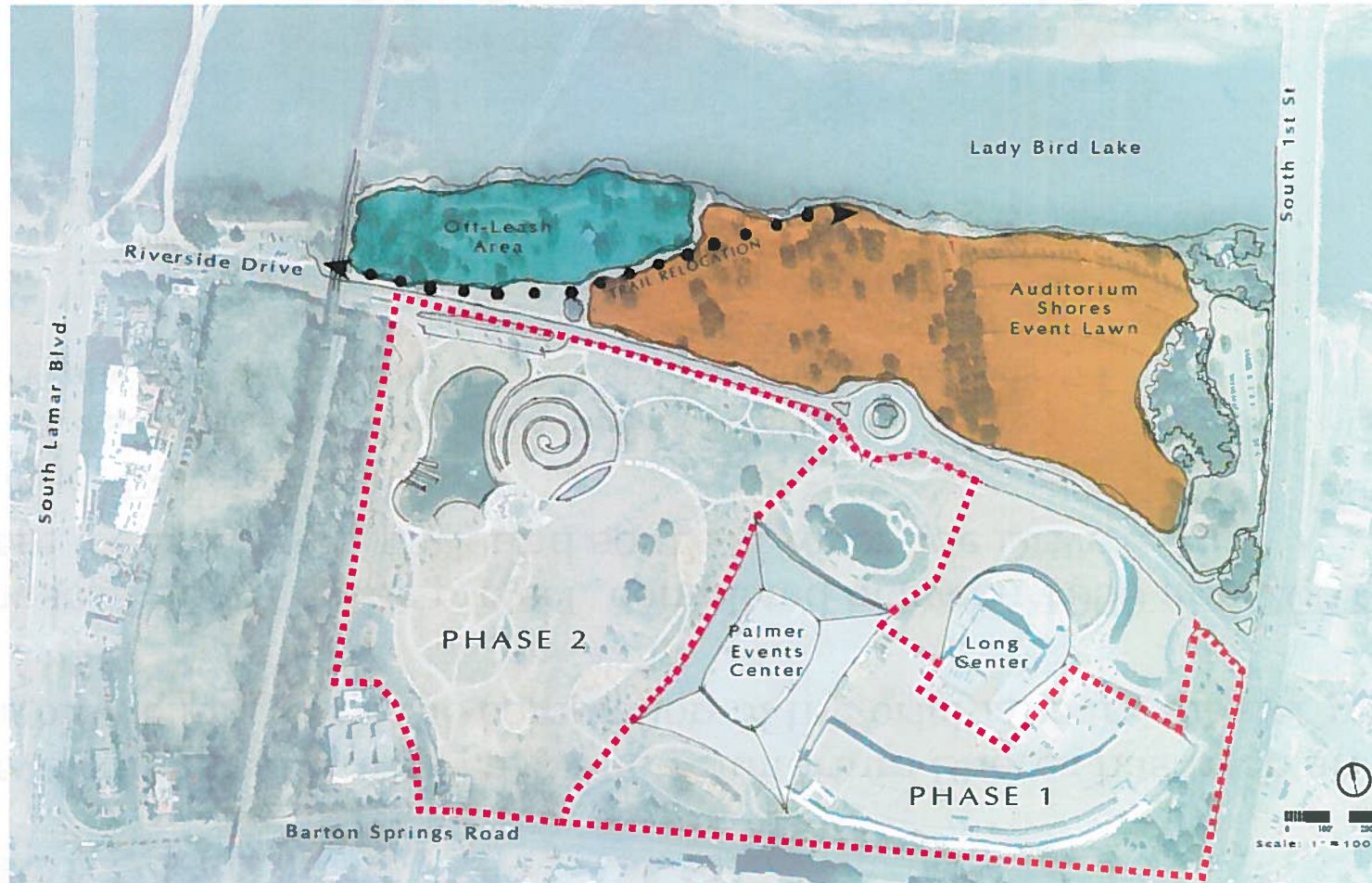
# Background

- Development of Butler Park and Auditorium Shores has been an ongoing effort since the completion of the original park master plan in 1999
- Phases I and II of the project, completed between 1999 and 2007, were focused upon parkland south of Riverside Drive
- Project Considerations
  - Riverside Drive and the Festival Street concepts
  - Venue Boundary (Rental Car Tax) and Funding Implications





# Auditorium Shores Improvements







# The Gain vs. The Give

Park Users	The Gain	The Give
Daily Park User	<ul style="list-style-type: none"> <li>• \$3.5M investment for Auditorium Shores</li> <li>• Restore balance</li> <li>• Sustainable Landscape</li> </ul>	<ul style="list-style-type: none"> <li>• Temporary park closure during construction</li> </ul>
Dog Community	<ul style="list-style-type: none"> <li>• Significant investment for state-of-the-art Off-leash Area</li> <li>• 365 day access</li> <li>• Dedicated shoreline access</li> <li>• Reduced trail/dog conflict of use</li> </ul>	<ul style="list-style-type: none"> <li>• On-leash activities on the middle lawn</li> <li>• No access to the event lawn</li> </ul>
Event Participants	<ul style="list-style-type: none"> <li>• High durability, High traffic turfgrass</li> <li>• Enhanced irrigation to provide dust suppression</li> </ul>	<ul style="list-style-type: none"> <li>• Temporary relocation of events</li> </ul>
Trail Users	<ul style="list-style-type: none"> <li>• Trail remains open with re-routes</li> <li>• Better connectivity</li> <li>• Reduced trail/dog conflict of use</li> </ul>	<ul style="list-style-type: none"> <li>• Slight reduction of shoreline experience</li> <li>• Trail detour during construction</li> </ul>



# Partnership Opportunity

- COA-PARD, Austin Parks Foundation and C3 Presents
- Collectively enhance parkland to sustainably accommodate special events, outdoor concerts and community gatherings
- Project will include \$3.5M for design and construction:
  - ❑ Newly designed and developed off-leash area, with dedicated water front access - \$1.1M
  - ❑ Expanded irrigation and turfgrass for the event lawn and remaining portions of Auditorium Shores - \$1.625M
  - ❑ Realignment of the trail

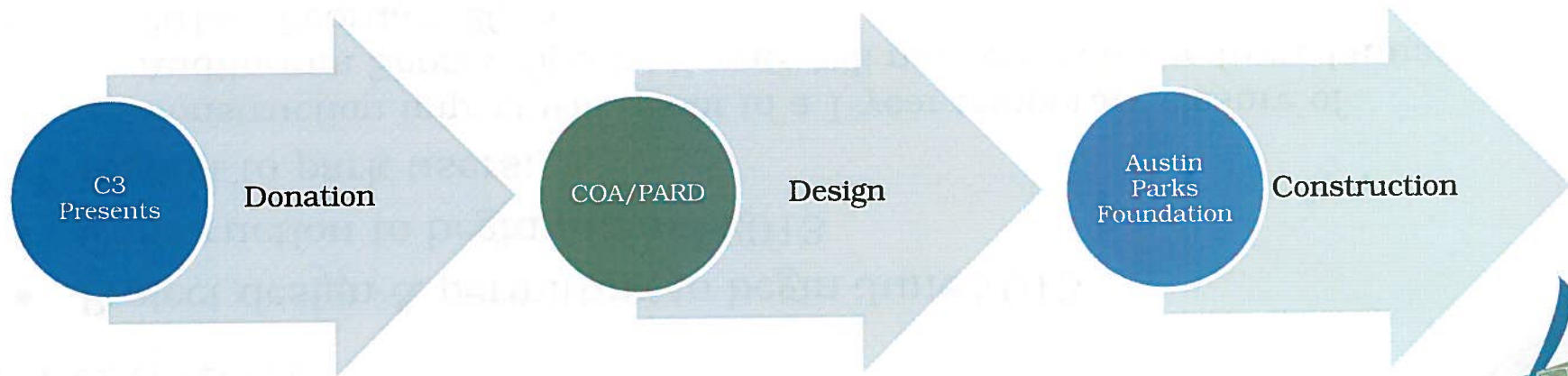




# Parkland Improvement Agreement

## Payment Methodology

- The City appropriates \$3.5M as an FY13 PARD-CIP budget amendment
- C3 Presents donates \$3.5M via annualized donation to the City over a 5-year period
- COA Project Team provides oversight during construction

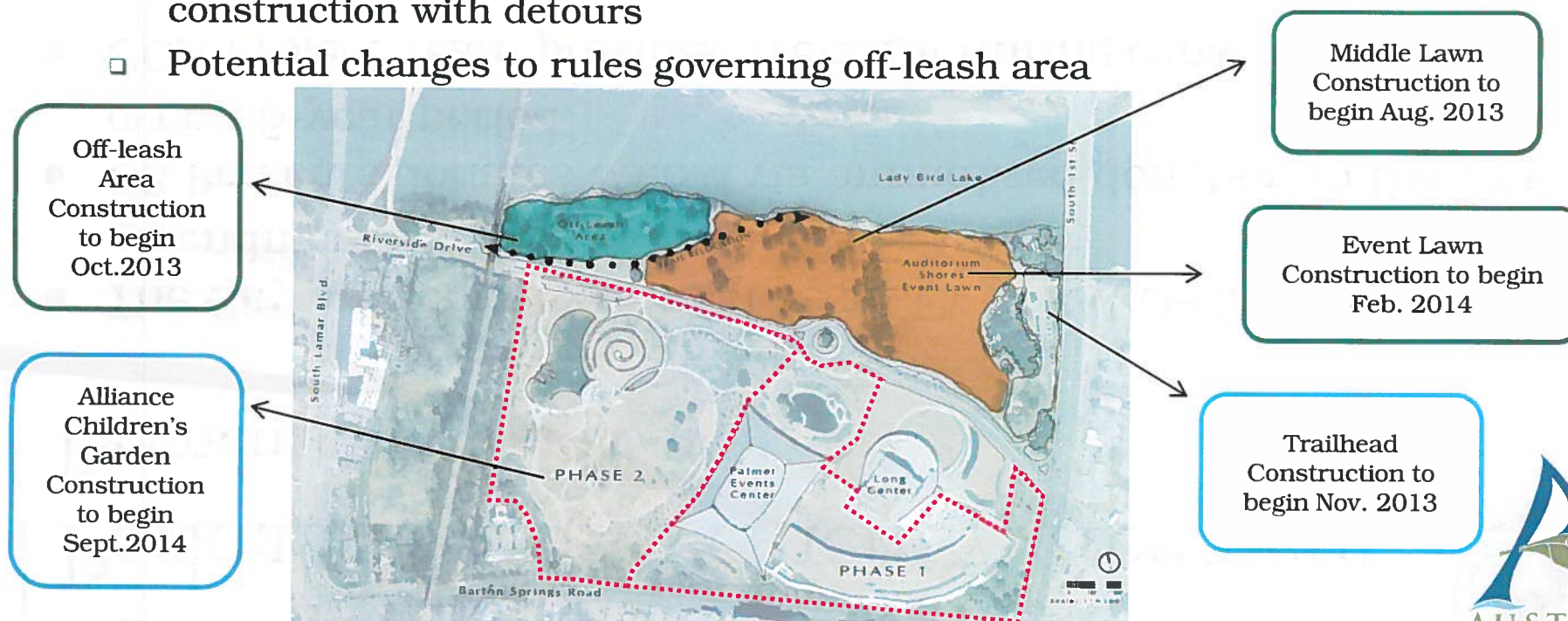






# Impact

- Project design & permitting to begin June 2013
- Construction to begin August 2013
- Impact to park users:
  - Construction impact will result in a 1-year temporary closure of Auditorium Shores: Special Events will not occur on site from January 2014 – February 2015
  - Ann and Roy Butler Hike & Bike Trail will remain open during construction with detours
  - Potential changes to rules governing off-leash area





# Next Steps



- Council Authorization June 6
  - Parkland Improvement Agreement with Austin Parks Foundation and C3 Presents
  - Amend design contract to increase scope
  - Code Amendment to modify Auditorium Shores off-leash area
- Continued Public Outreach

