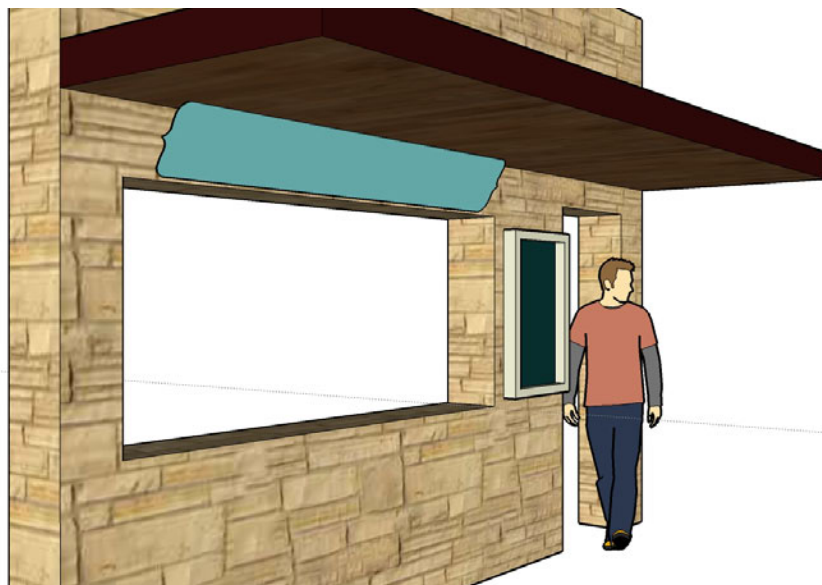
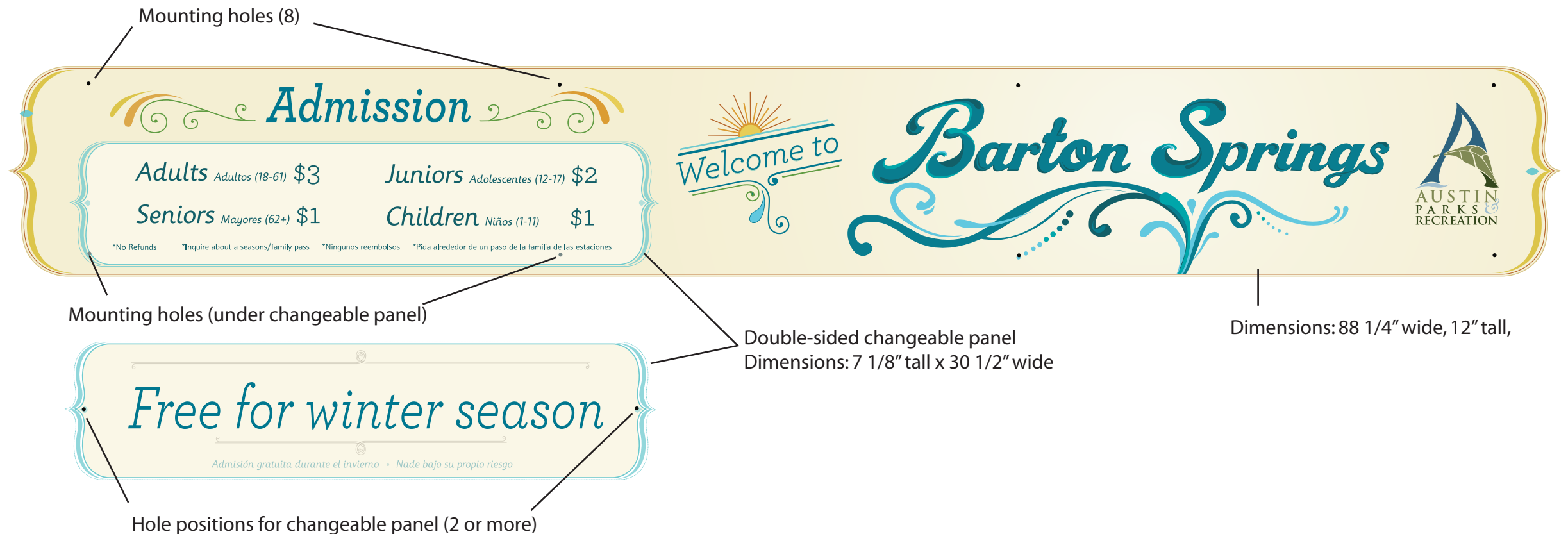


# Admission sign

Dimensions: 88 1/4" wide, 12" tall (with mounting holes)

## Double-sided changeable panel

Dimensions: 7 1/8" tall x 30 1/2" wide (with mounting holes)



This sign will be installed above the cashier's window at the main entrance to the pool. It will be secured at an angle so that it is easy to read standing at the window. It will be secured with angled brackets.

# Hours Sign (with cut-out areas)

Dimensions: 20 1/4 x 32 3/4

The sign template features a light beige background with a decorative green and orange border. At the top, a dark green arched banner contains the text "Hours of Operation" in white serif font, with "Horas de Operación" in a smaller, lighter green script font below it. Below this is a large white rectangular area for text, with a decorative green border. Underneath this area is a horizontal band with the text "News & Messages" in green script font, and "Noticias y Mensajes" in a smaller, lighter green script font below it. Below this band is another large white rectangular area for text, also with a decorative green border. At the bottom of the sign, there are three logos: the City of Austin logo on the left, the Austin Parks & Recreation logo in the center, and the CAPRA logo on the right. Below the logos, there are two ADA statements of commitment, one in English and one in Spanish, both in small black text.

**Hours of Operation**  
*Horas de Operación*

**News & Messages**  
*Noticias y Mensajes*

**ADA Statement of Commitment**  
The City of Austin is committed to compliance with the Americans with Disabilities Act. If you require special assistance to use this facility please call (512) 974-6700, or simply ask a member the Barton Springs staff for assistance.

**ADA Declaración de Compromiso**  
La Ciudad de Austin se mantiene dentro del Acto para Americanos con Deshabilitades. Si usted requiere ayuda especial para el uso de esta alberca por favor llame al (512) 974-6700 o simplemente pida ayuda a cualquier miembro del personal de Barton Springs.

cut-out areas