

Concepts for Pressler Road Extension

Land & Facilities Committee
Parks & Recreation Board



Gary W. Schatz, P.E., PTOE
Austin Transportation Department
April 8, 2013

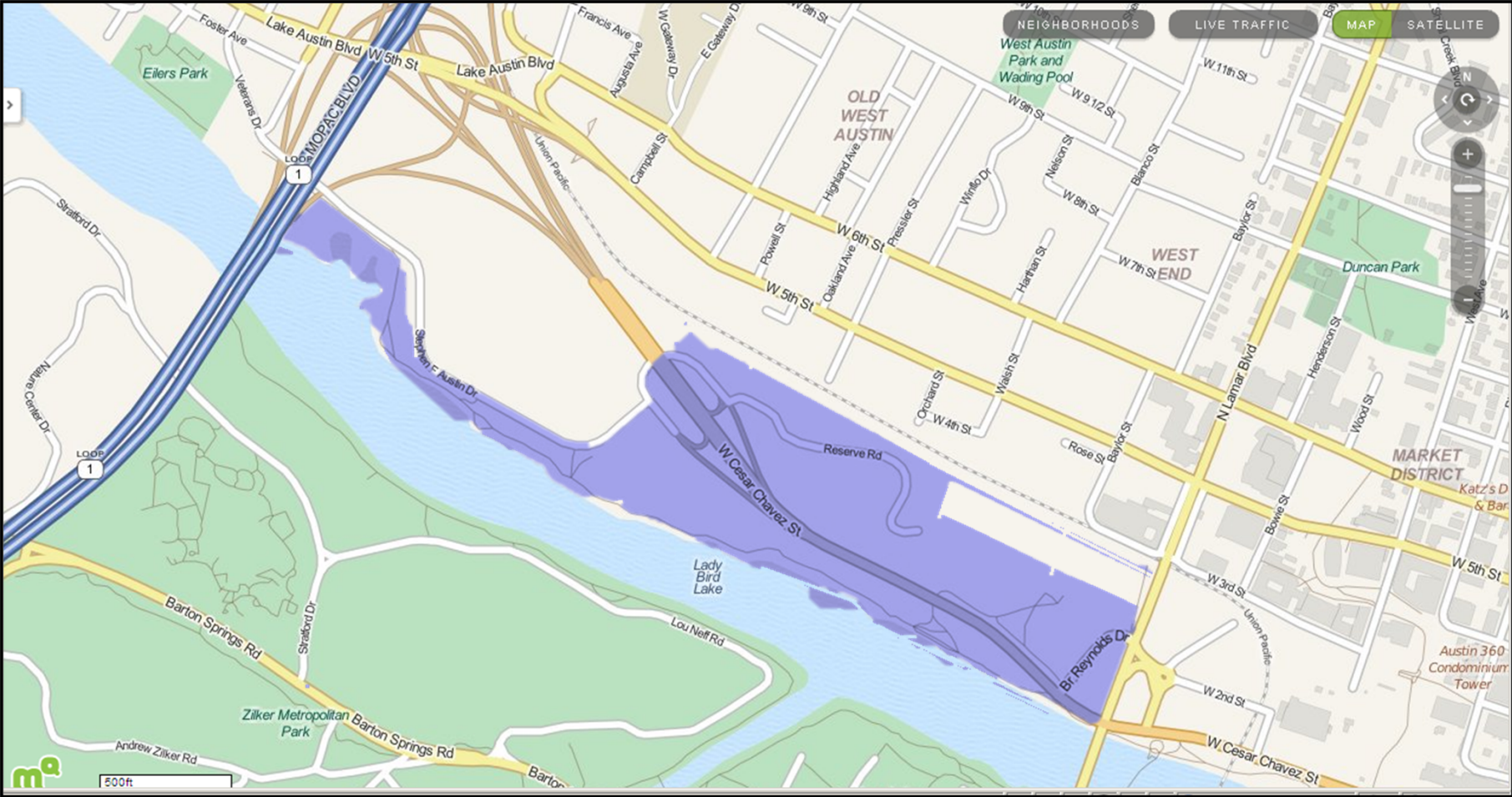
Issues

- Lamar Beach
 - Isolated from the community
 - Need for Master Planning
 - Lack of parking
- Area Connectivity
 - Bicyclists & Pedestrians
 - MoPac Managed Lanes
- Community
 - Train Horns
 - Proposed development isolated
 - Need for context sensitive designs

Improvement Concepts

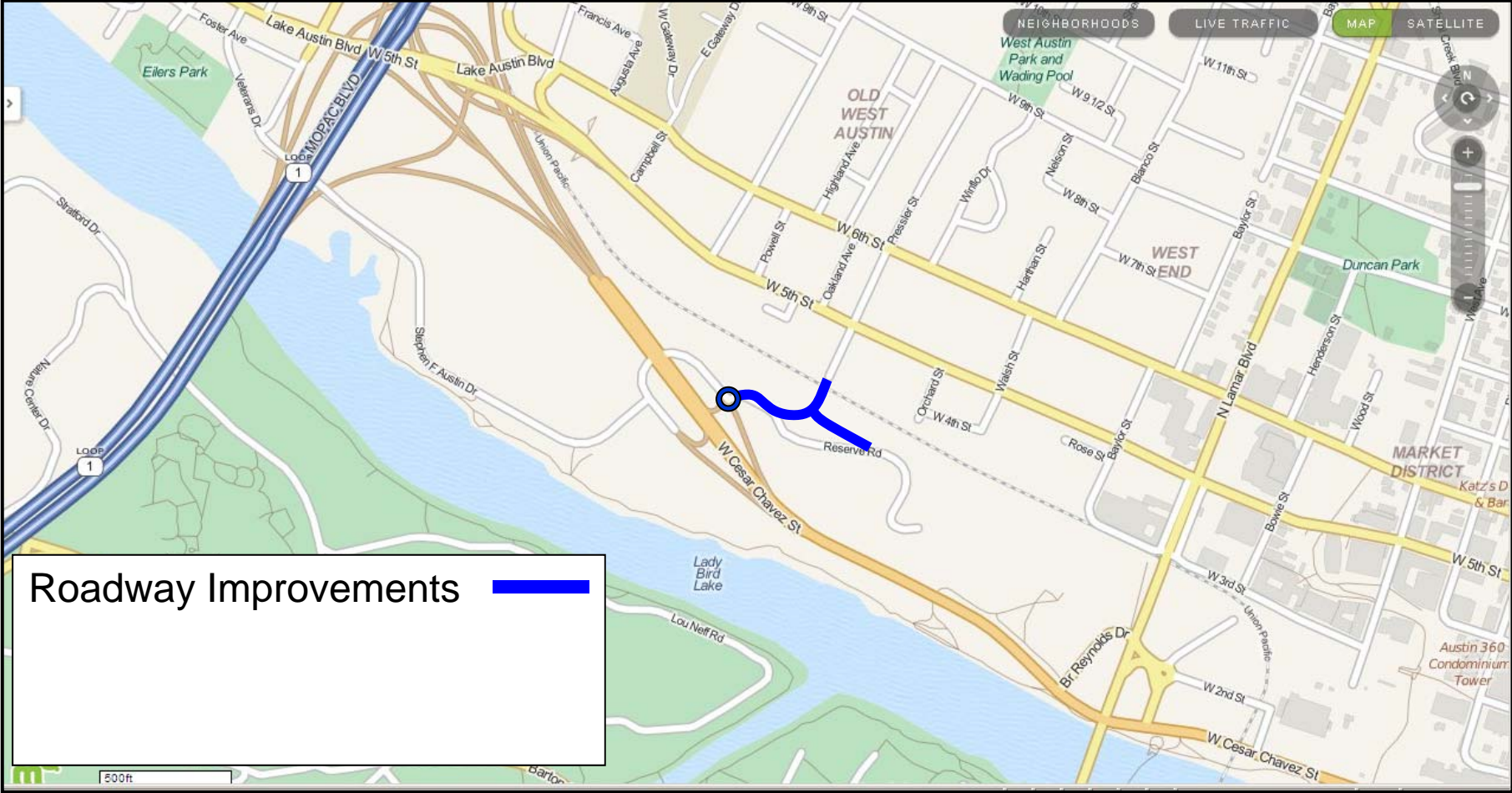
- Pressler Road Extension
 - Context-sensitive design
 - Serves all roadway users
 - Provides area connectivity
 - Allows for creation of railroad quiet zone
 - Complimentary to future master planning efforts
 - Supports partnership with future development
 - Enables future parking management strategies

Pressler Road Improvements



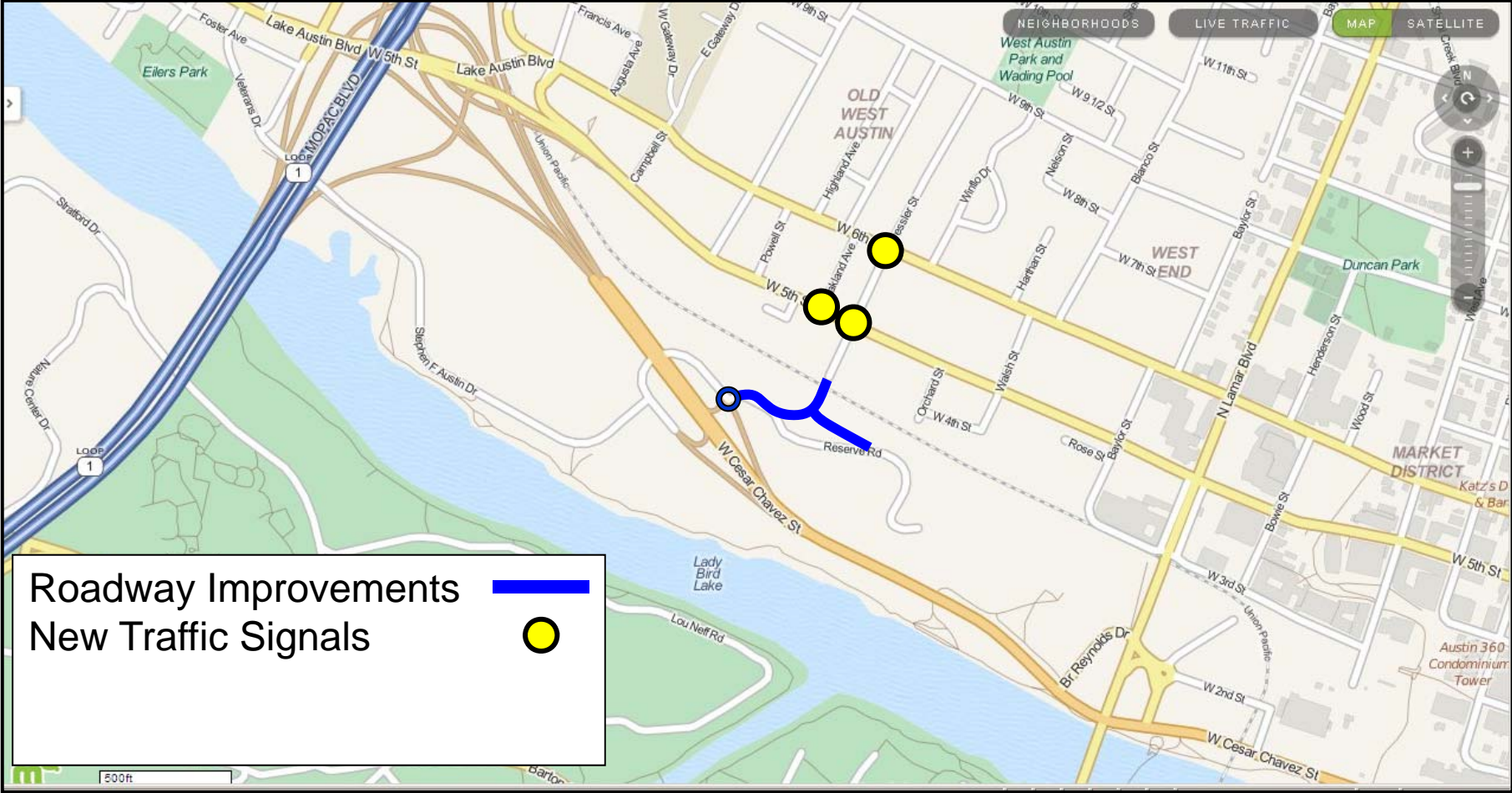
(Image from MapQuest)

Pressler Road Improvements



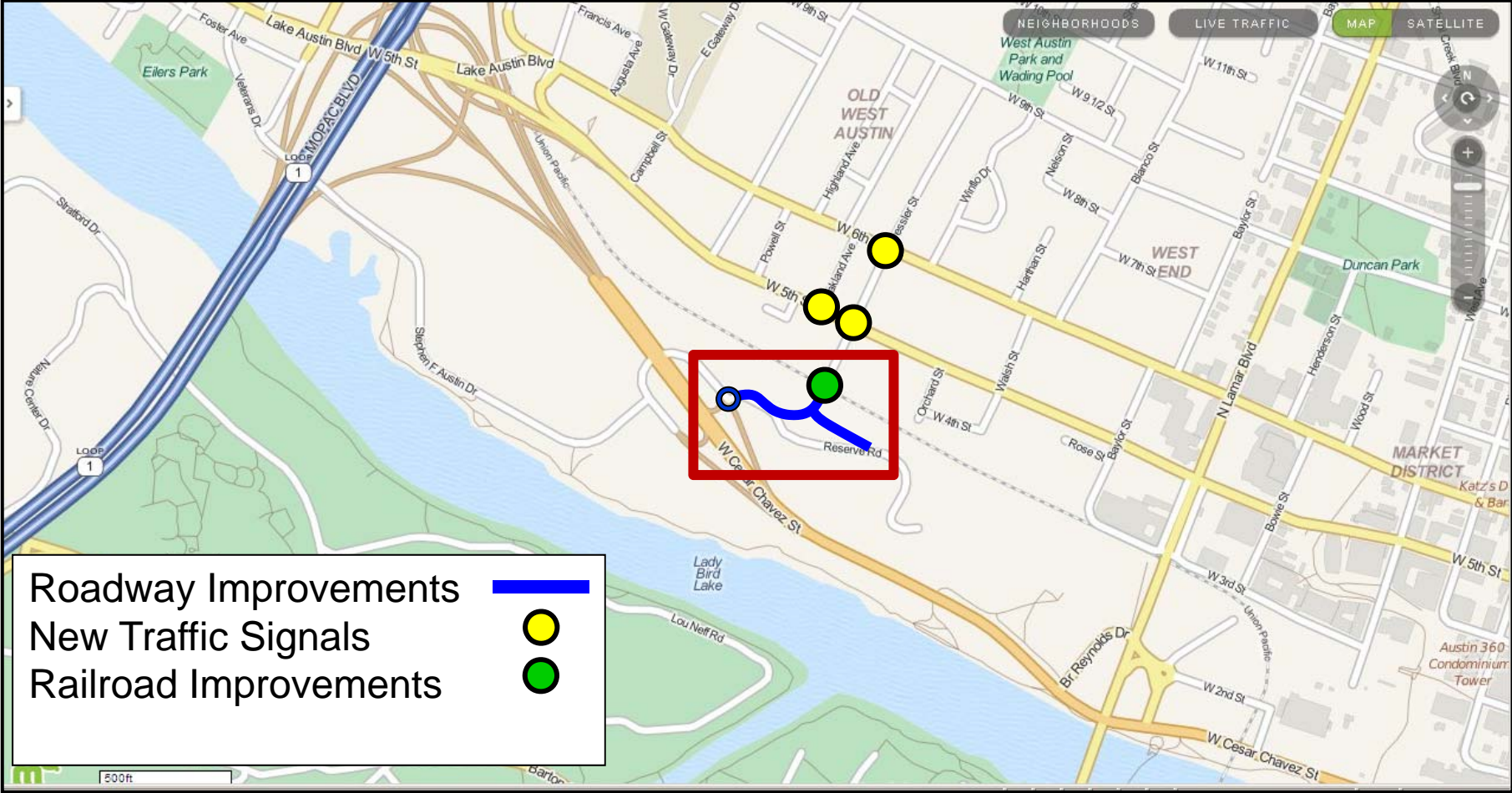
(Image from MapQuest)

Pressler Road Improvements



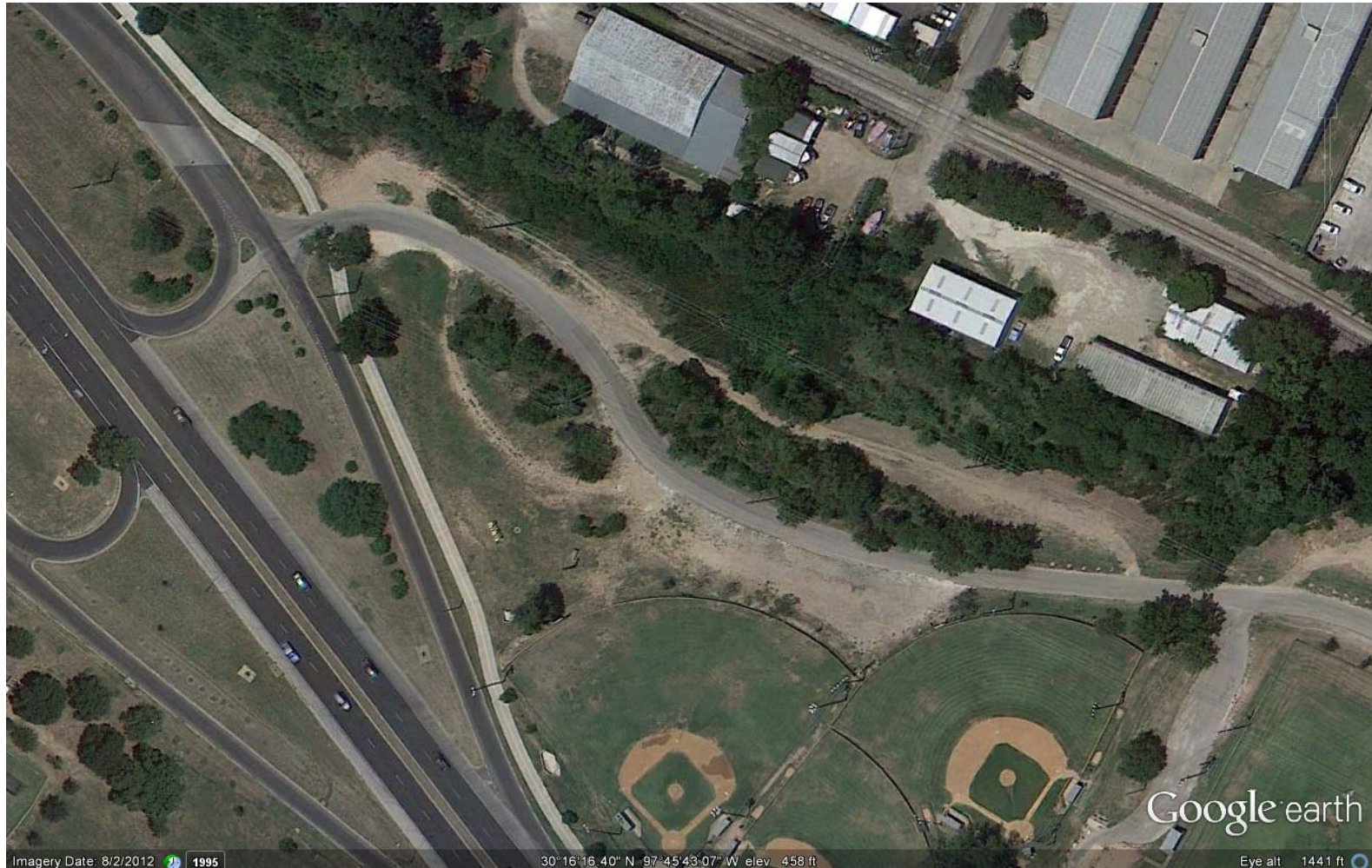
(Image from MapQuest)

Pressler Road Improvements

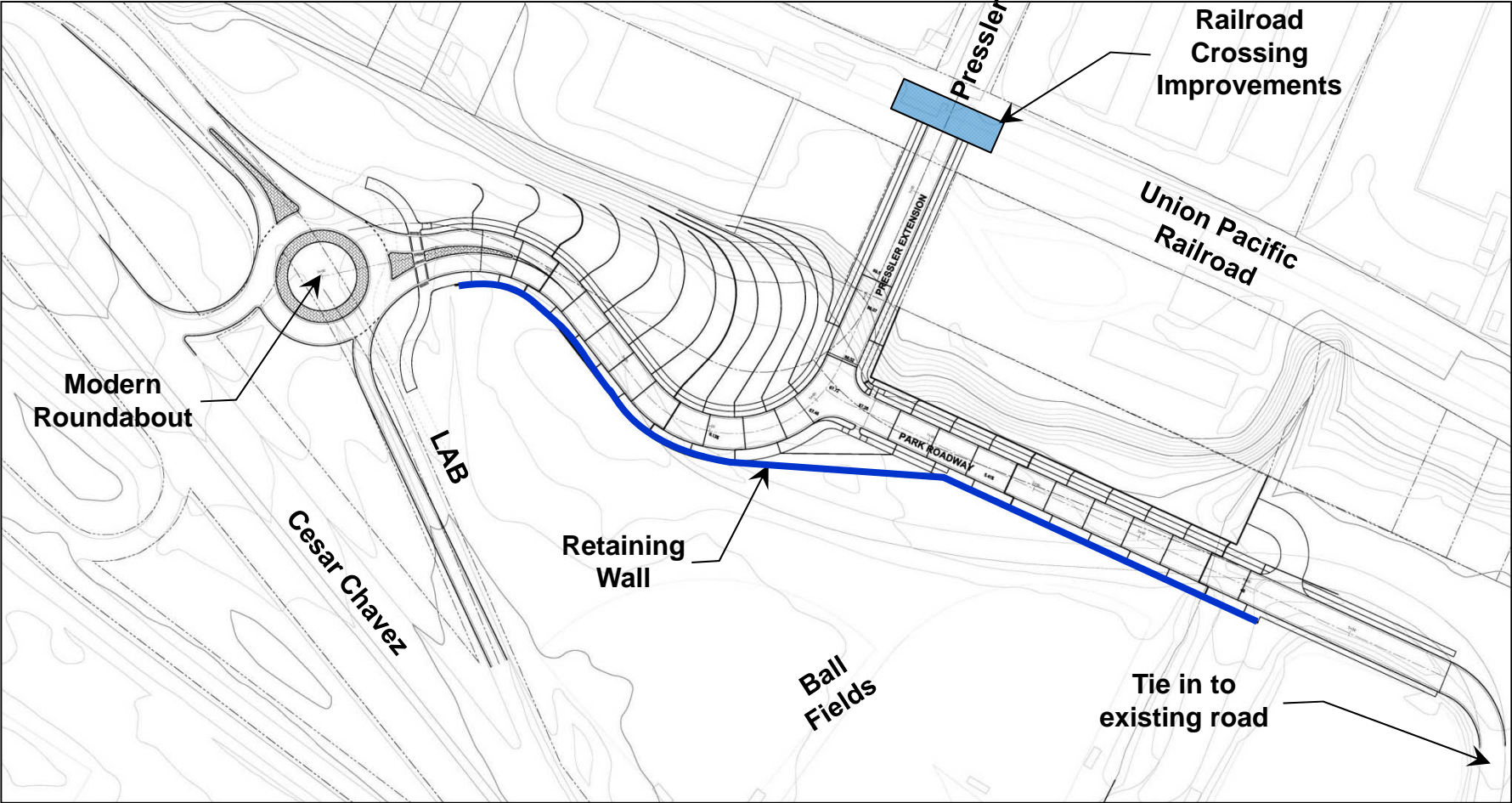


(Image from MapQuest)

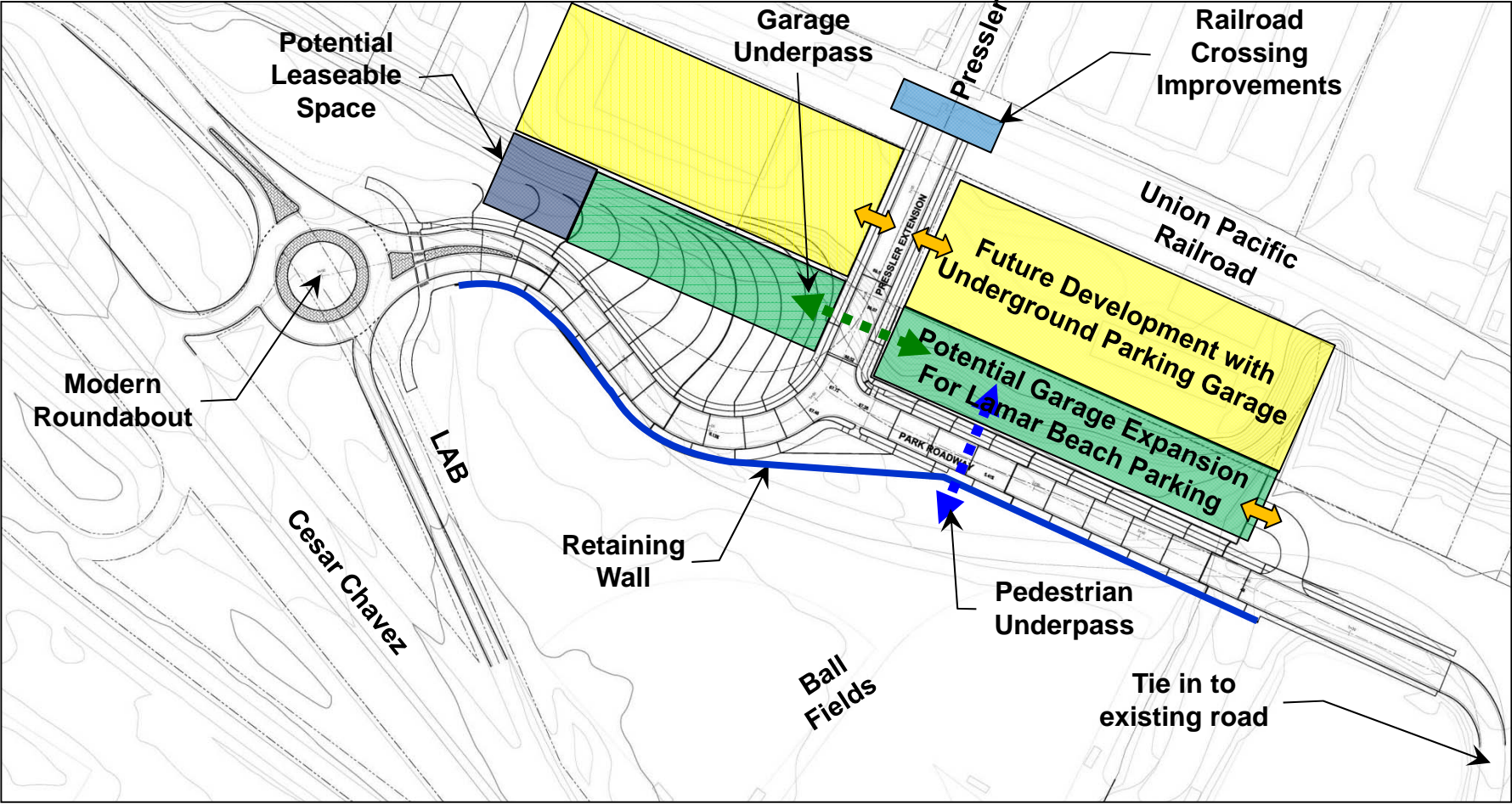
Pressler Road Improvements



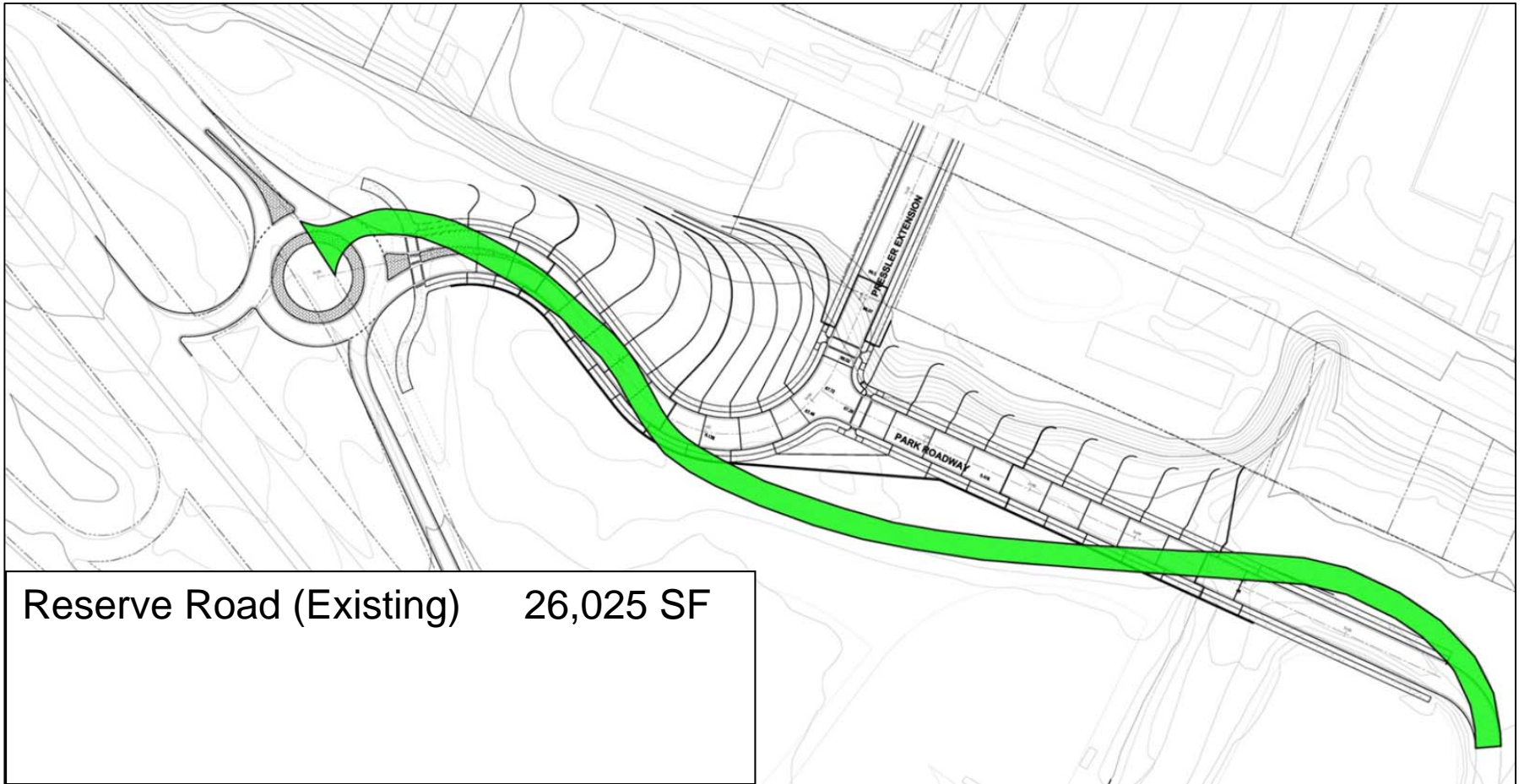
Pressler Road Improvements



Pressler Road Improvements



Pressler Road Improvements



Pressler Road Improvements



Mitigation Strategies

- Shared Values
 - Serves all roadway users
 - Pedestrians
 - Bicyclists
 - Transit riders
 - Motorists
 - Used by travelers and park patrons
 - Travelers during hours of park closure
 - Mostly travelers during weekday peak commute periods
 - Mostly park patrons on weekends
 - Split between travelers and park patrons other times

Mitigation Strategies

- Funding of Lamar Beach Park Improvements
 - Climbing wall included in the retaining wall
 - Trails and educational stations in the rain garden
 - Pedestrian underpass beneath Reserve Road
 - Vehicular underpass beneath Pressler Road
 - Permeable parking area for ball fields
 - Bouldering field west of Pressler Road (Optional)

Mitigation Strategies

- Features with Intrinsic Value to Lamar Beach Park
 - Future opportunity for structured parking
 - Opportunity for railroad quiet zone
 - Opportunities for AIPP
 - Retaining wall/climbing wall - “vertical canvas”
 - Educational stations in the rain garden
 - People-centric connection to adjacent neighborhoods
 - Modern roundabout
 - Safer and more efficient ingress and egress
 - Allows for future driveway for western end of park
 - Gateway or community focal point

Mitigation Strategies

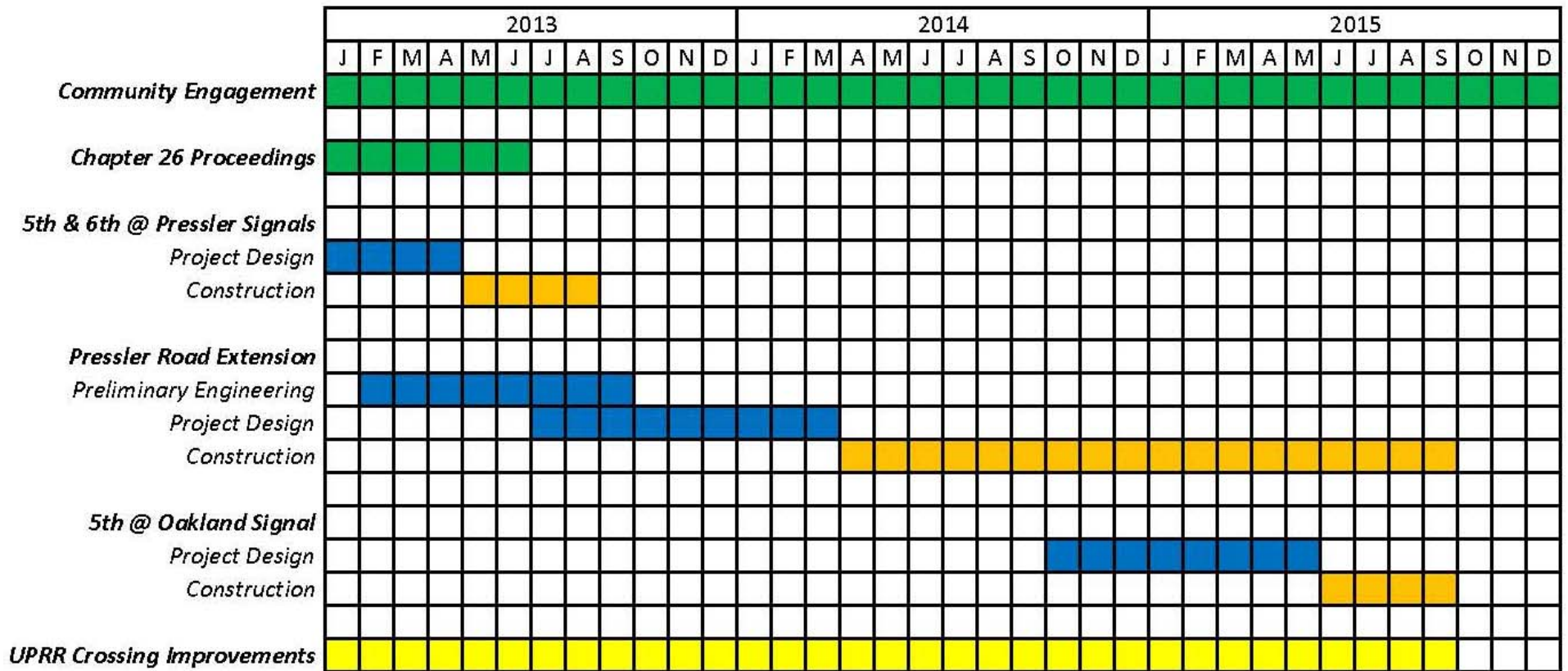
- Features with Intrinsic Value to Lamar Beach Park
 - Pedestrian underpass improves safety
 - Vehicular underpass supports future structured parking
 - “Green roof” opportunity for future structured parking
 - Symbiotic relationship with Pressler Park development

Implementation Strategy

- Funding
 - 5th & 6th @ Pressler Signals \$0.2M (2010 Bond)
 - Pressler Extension \$3.0M (2012 Bond)
 - 5th @ Oakland Signal \$0.1M (2012 Bond)
 - UPRR Crossing \$0.5M (2012 Bond)
- Total Budget \$3.7M

Implementation Strategy

- Preliminary Timelines



Implementation Strategy

- Next Steps
 - Continue Chapter 26 process
 - Continue refining implementation strategy
 - Develop preliminary designs (In process)
 - Engage UPRR for crossing improvements (In process)
 - Meetings with stakeholders at milestones/upon request

Pressler Road Extension Benefits

- Lamar Beach
 - Connection to the community
 - Complimentary to future master planning efforts
 - Enables future parking management strategies
- Area Connectivity
 - Bicyclists & Pedestrians
 - MoPac Managed Lanes
- Community
 - Allows for future Railroad Quiet Zone
 - Supports partnership with future development
 - Context sensitive designs

Concepts for Pressler Road Extension

Land & Facilities Committee
Parks & Recreation Board



Gary W. Schatz, P.E., PTOE
Austin Transportation Department
April 8, 2013