



Presentation of Concept
to the
City of Austin Historic Landmark Commission

July 22, 2013

schematic design

916 CONGRESS



Presentation of Concept
to the

City of Austin Historic Landmark Commission

July 22, 2013

916 CONGRESS



916 Congress



Congress Avenue – Larmour Block, ca.1880

916 CONGRESS

916 Congress



Congress Avenue – Larmour Block, ca.1950

916 CONGRESS



Congress Avenue – Larmour Block

916 CONGRESS



Sixthriver Architects



Congress Avenue – Larmour Block... Today

916 CONGRESS



Congress Avenue – Larmour Block... Today



Congress Avenue – Larmour Block...



Proposed Concept



Congress Avenue – Larmour Block...

Proposed Concept – entrance at street

916 CONGRESS



Congress Avenue – Larmour Block...

Proposed Concept - looking southeast from street



Congress Avenue – Larmour Block...

Proposed Concept - front elevation

916 CONGRESS



Congress Avenue – Larmour Block...

Proposed Concept - looking northeast from street

916 CONGRESS



Congress Avenue – Larmour Block...

Proposed Concept - looking southeast

916 CONGRESS



Proposed Concept...

Street front

916 CONGRESS



Proposed Concept...

Street front

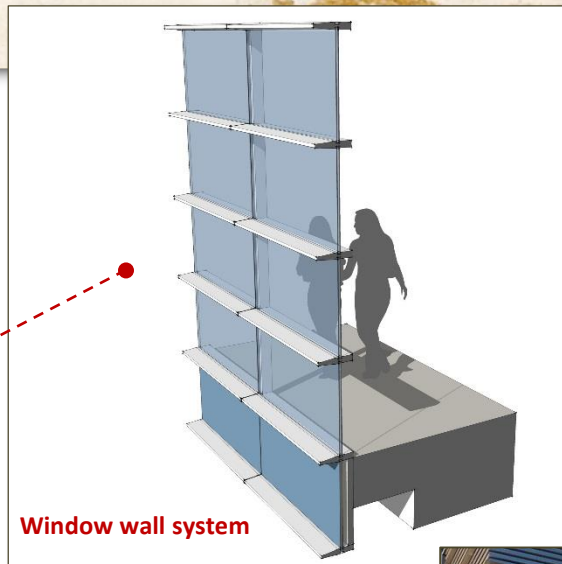
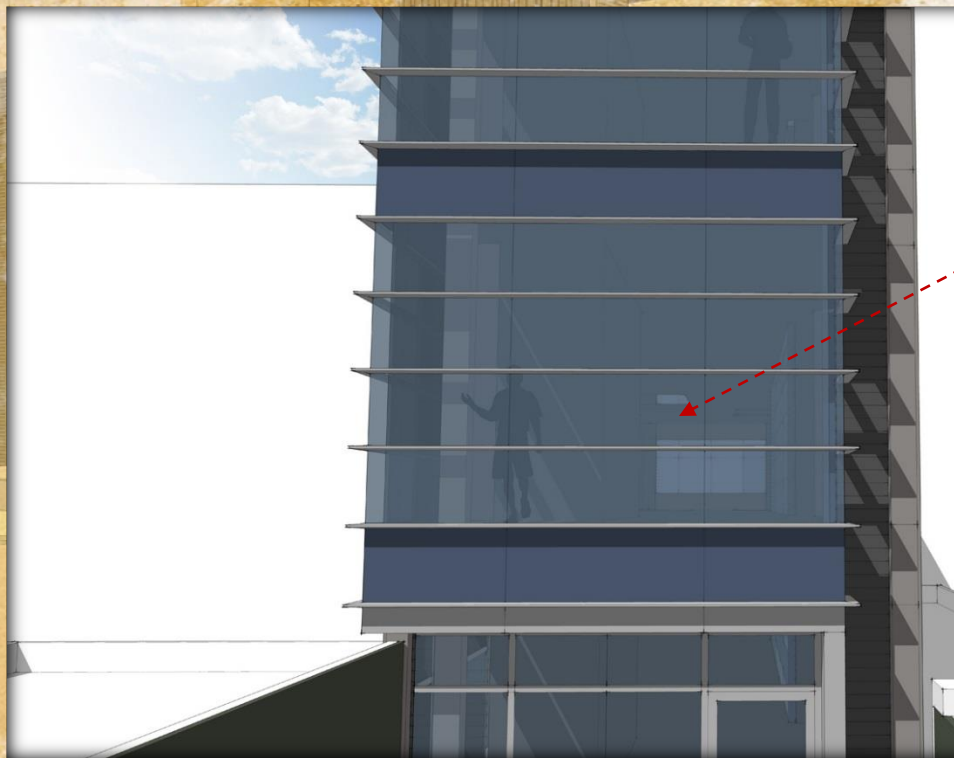
916 CONGRESS



Proposed Concept...

Detail at front glass

916 CONGRESS



Window wall system



Proposed Concept...

Detail at front glass

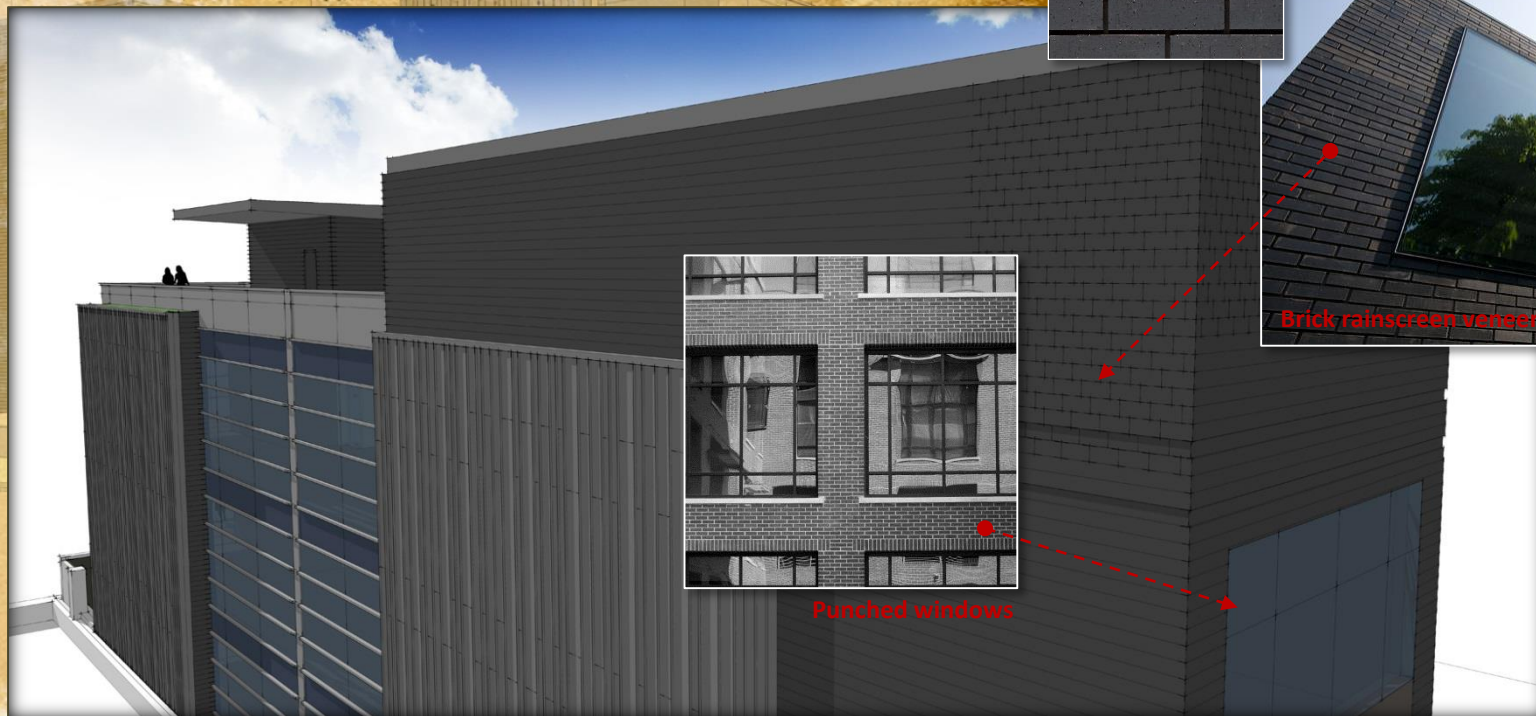
916 CONGRESS



Proposed Concept...

Detail at rear

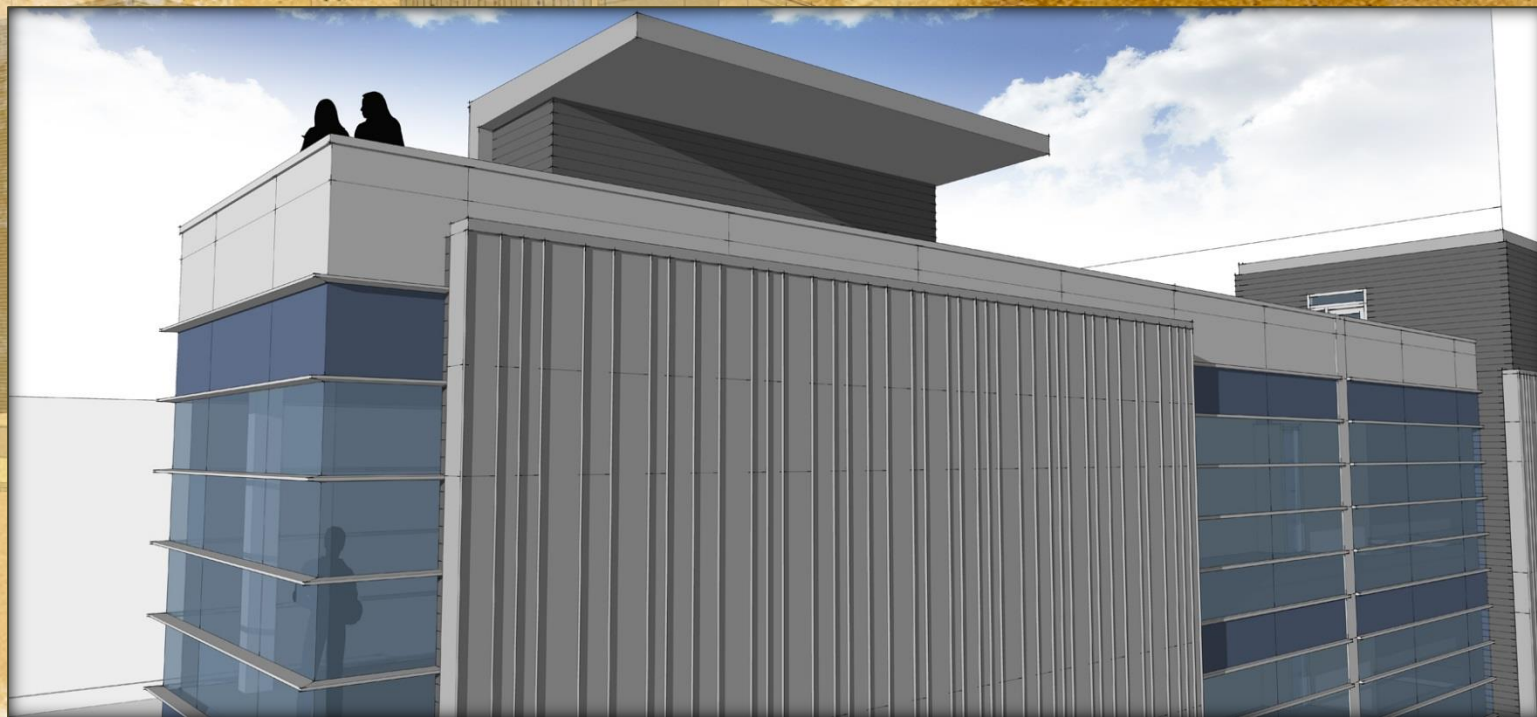
916 CONGRESS



Proposed Concept...

Detail at rear

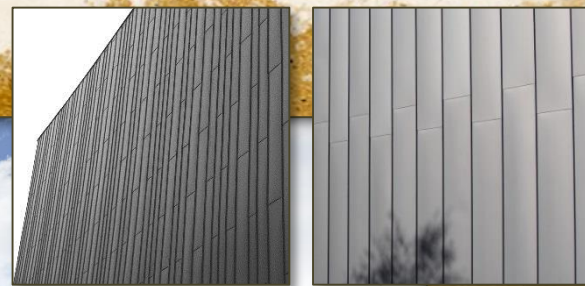
916 CONGRESS



Proposed Concept...

Detail at side

916 CONGRESS



● Standing Seam Metal Panel



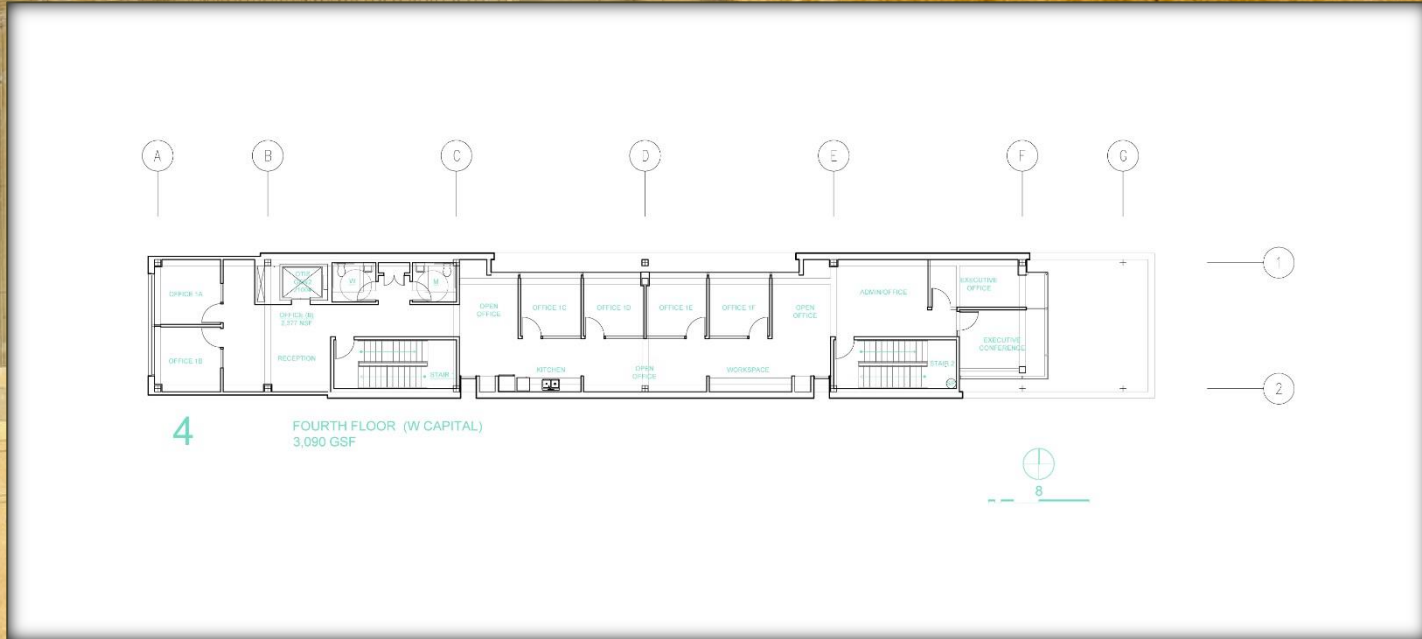
Proposed Concept...

Detail at side

916 CONGRESS



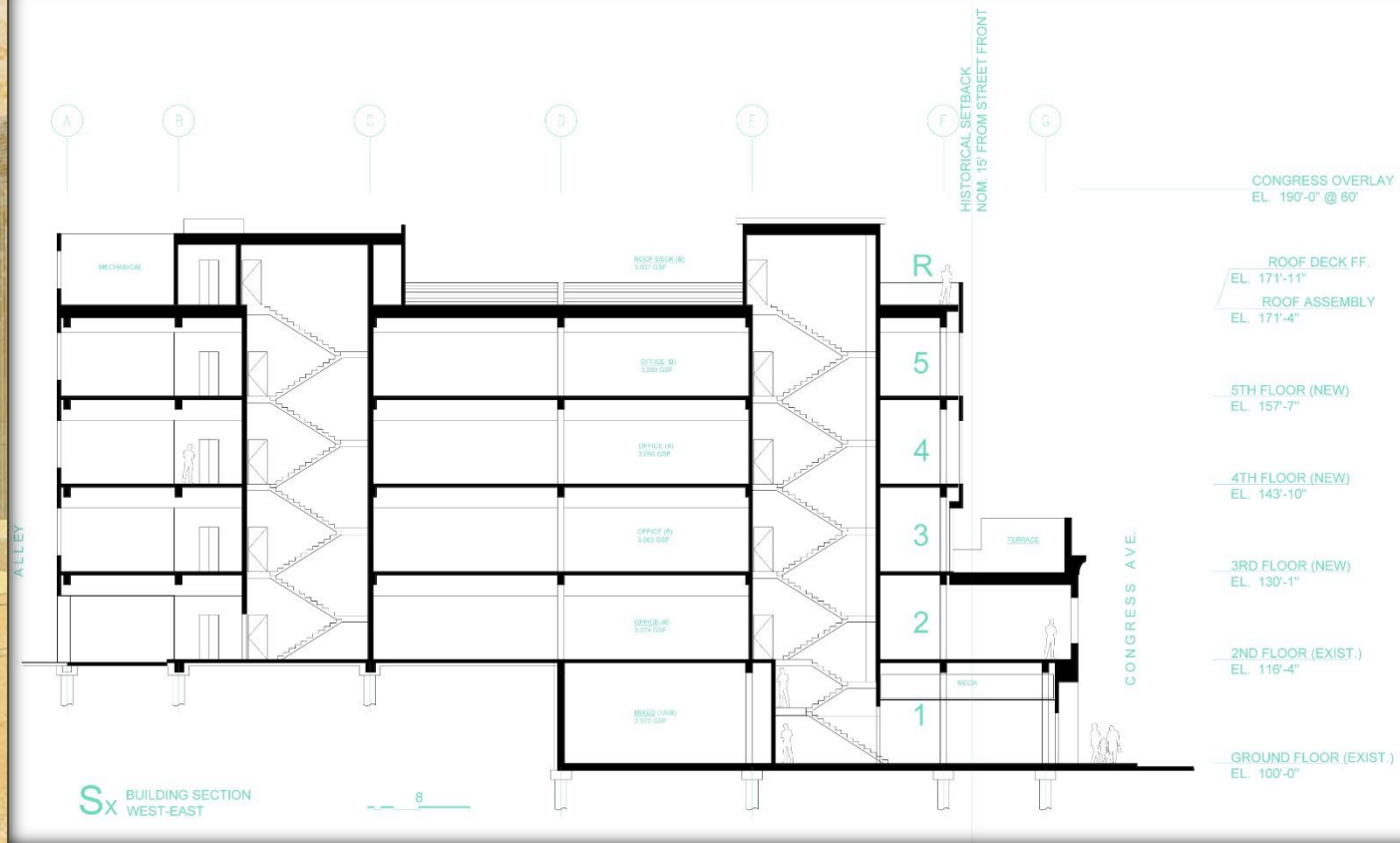




Congress Avenue – Larmour Block...

Typical floor

916 CONGRESS



Congress Avenue – Larmour Block...

Building section

916 CONGRESS



End of Presentation

If you have questions or require additional materials,
please contact ...

Thomas Boes
Sixthriver Architects
512.993.7943
tboes@sixthriver.com

schematic design

916 CONGRESS