






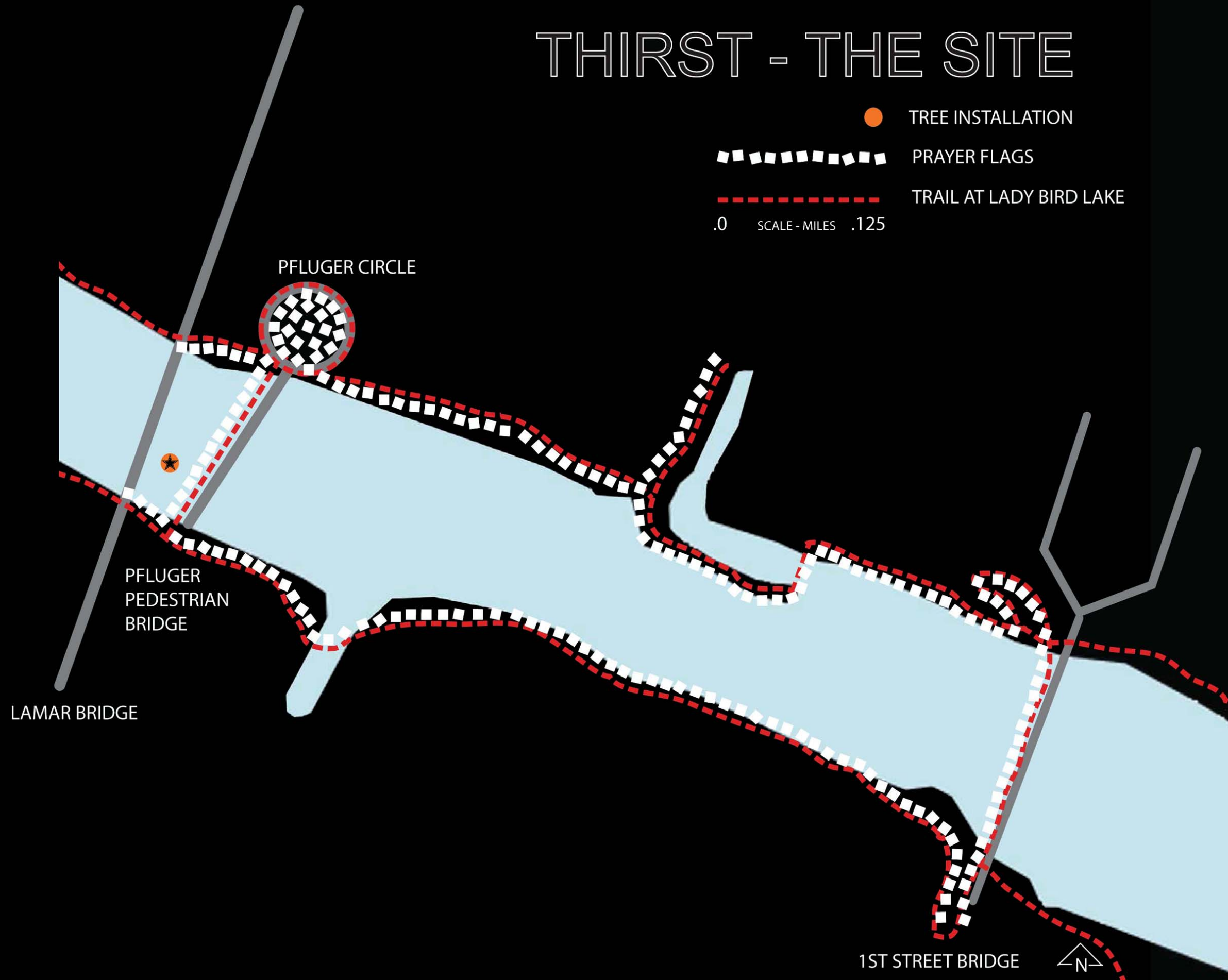
PRESENTATION TO PARKS BOARD - 7.23.13

thirst

women & their work 

THIRST - THE SITE

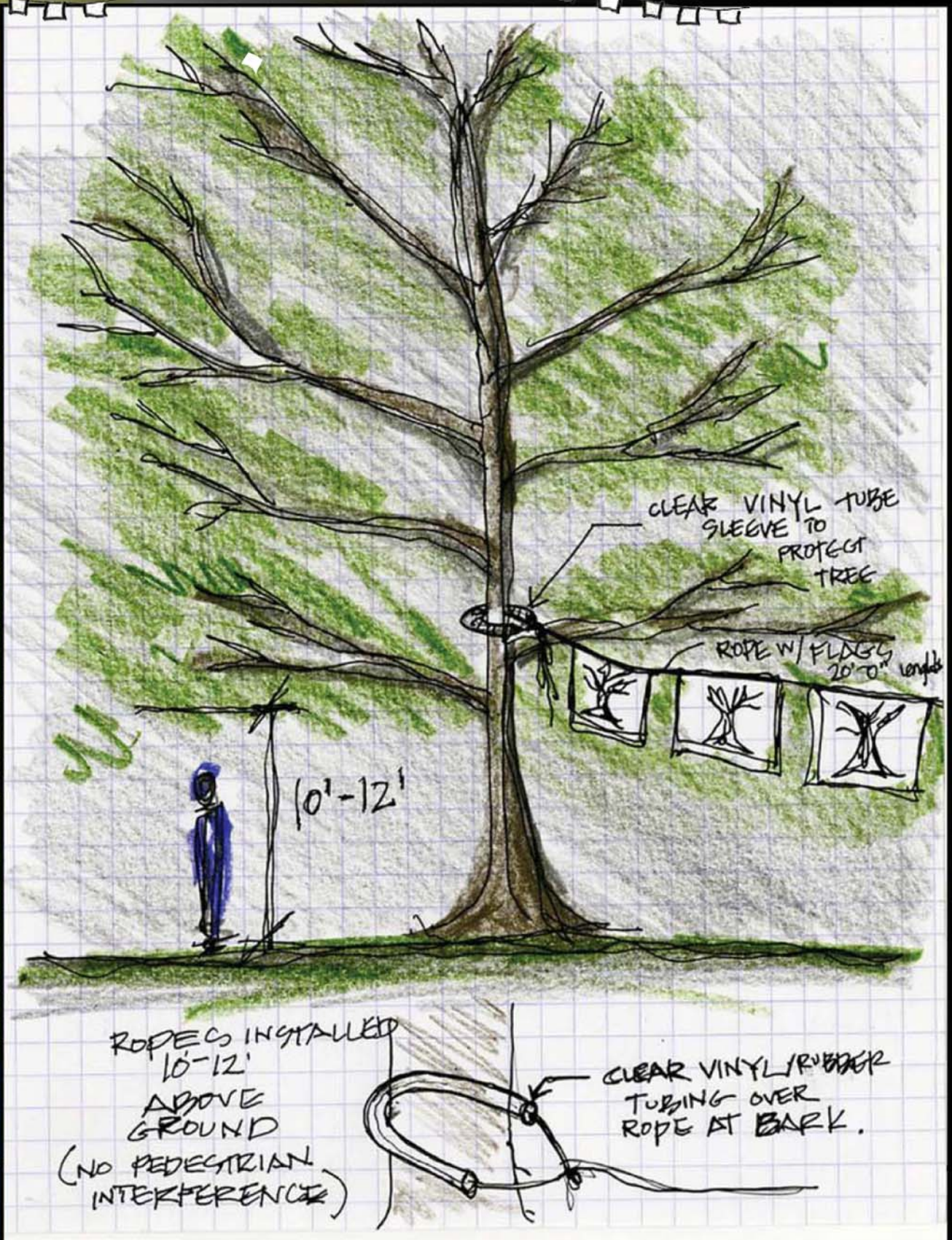
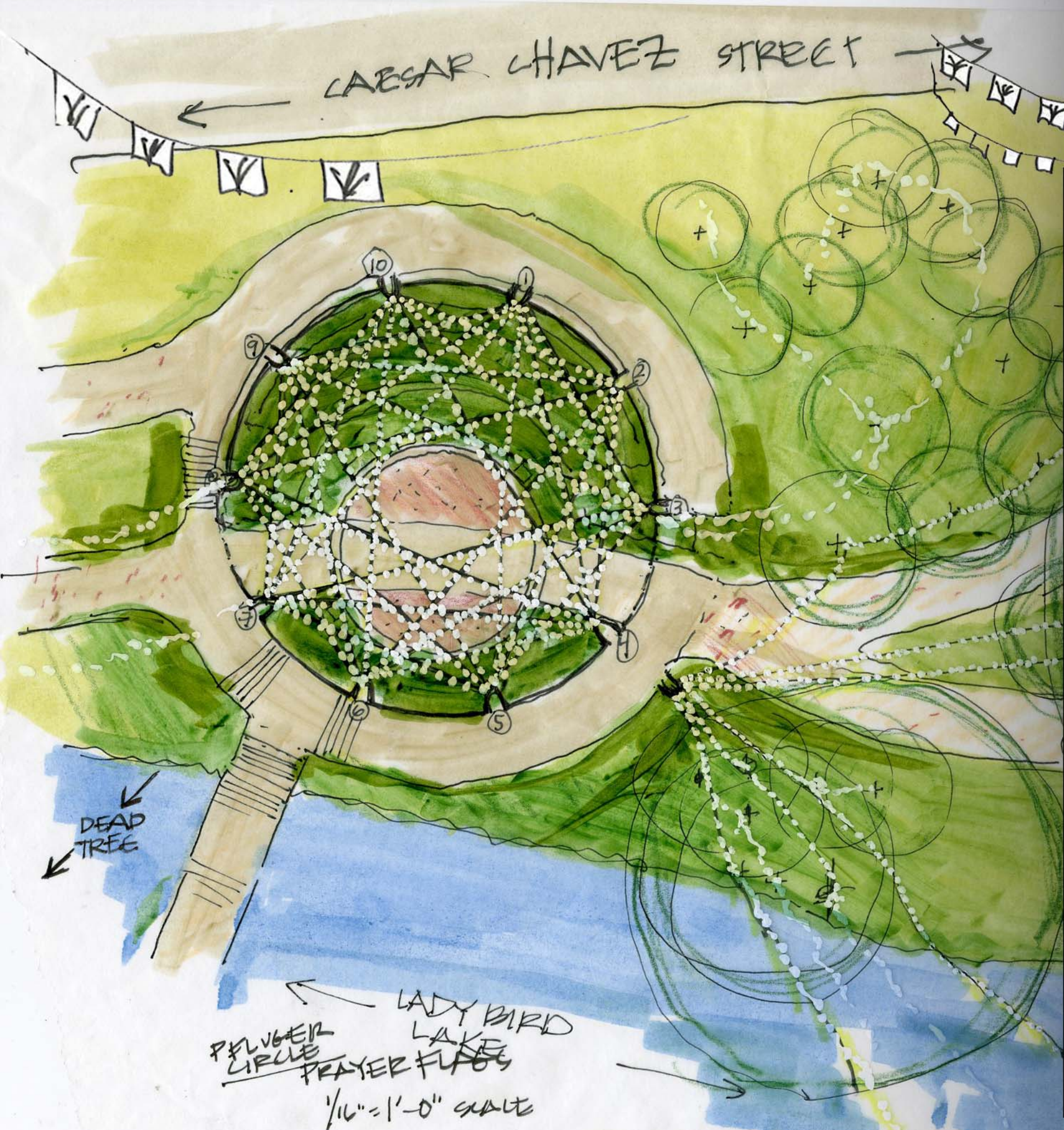
-  TREE INSTALLATION
 -  PRAYER FLAGS
 -  TRAIL AT LADY BIRD LAKE
- .0 SCALE - MILES .125



PRAYER FLAG PROTOTYPE: 12" X 16"

1ST STREET BRIDGE





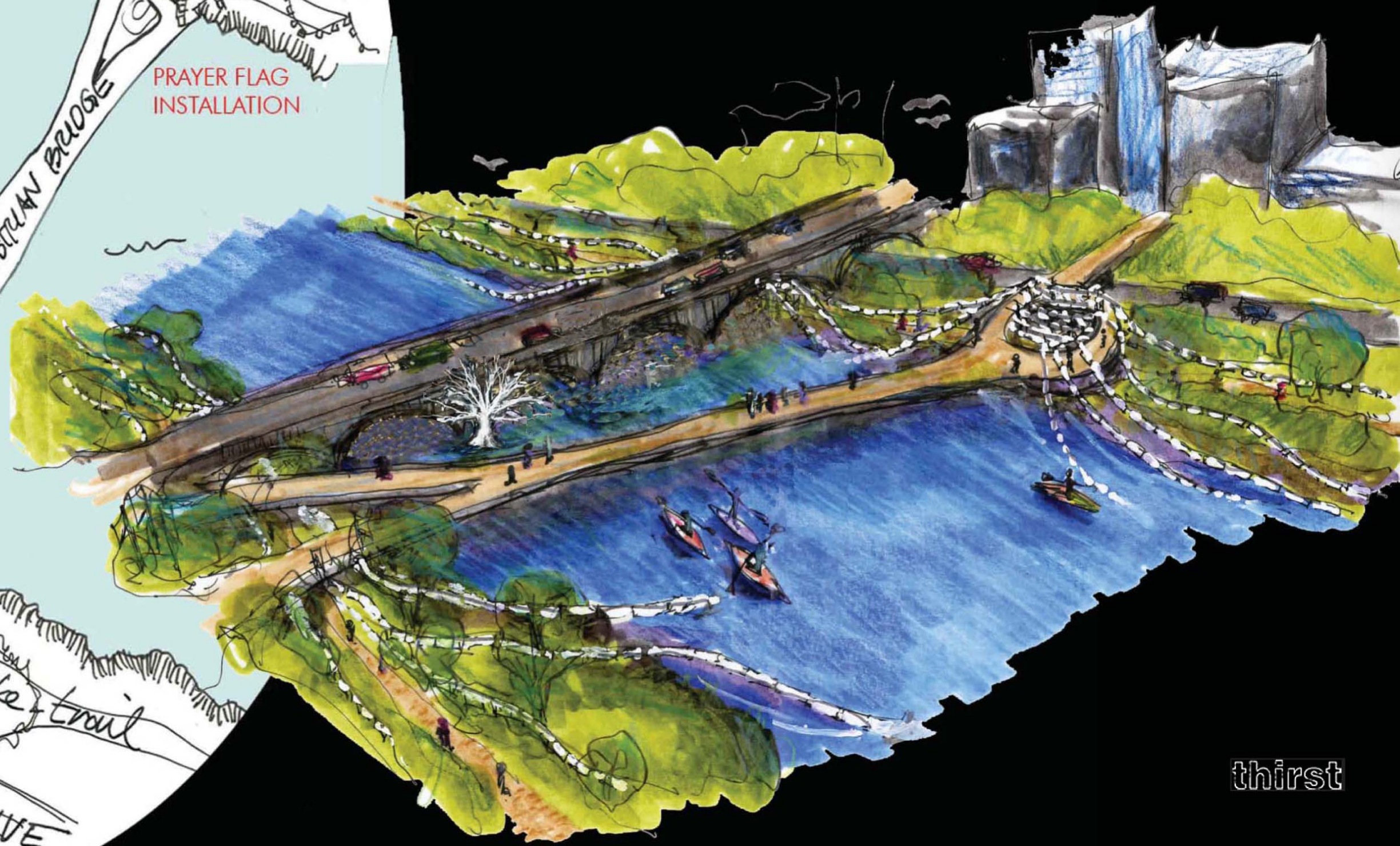
LADY BIRD
LAKE
PRAYER FLAGS
1/16" = 1'-0" SCALE

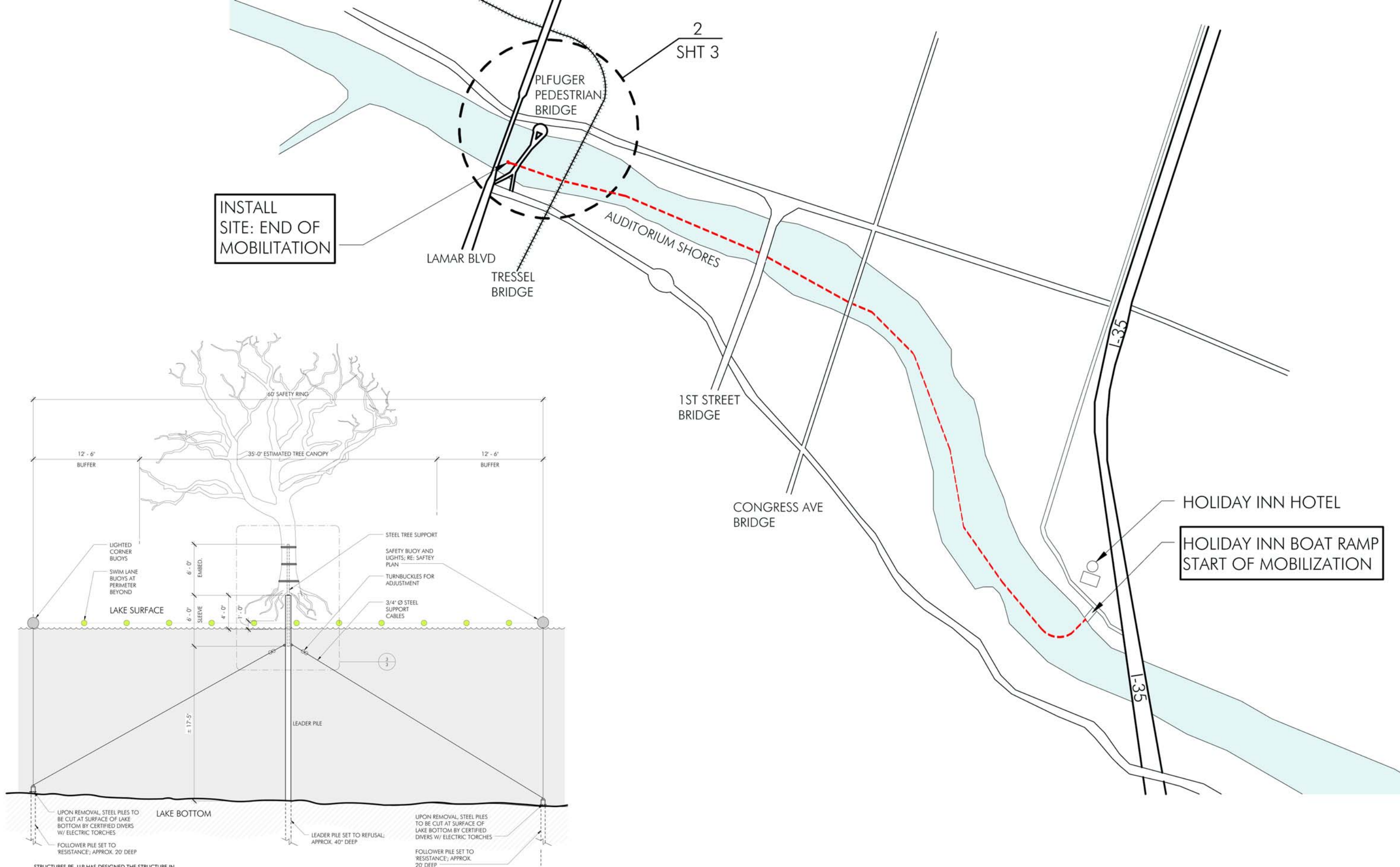
ROPE IS INSTALLED
10'-12'
ABOVE
GROUND
(NO PEDESTRIAN
INTERFERENCE)

CLEAR VINYL/RUBBER
TUBING OVER
ROPE AT BARK.



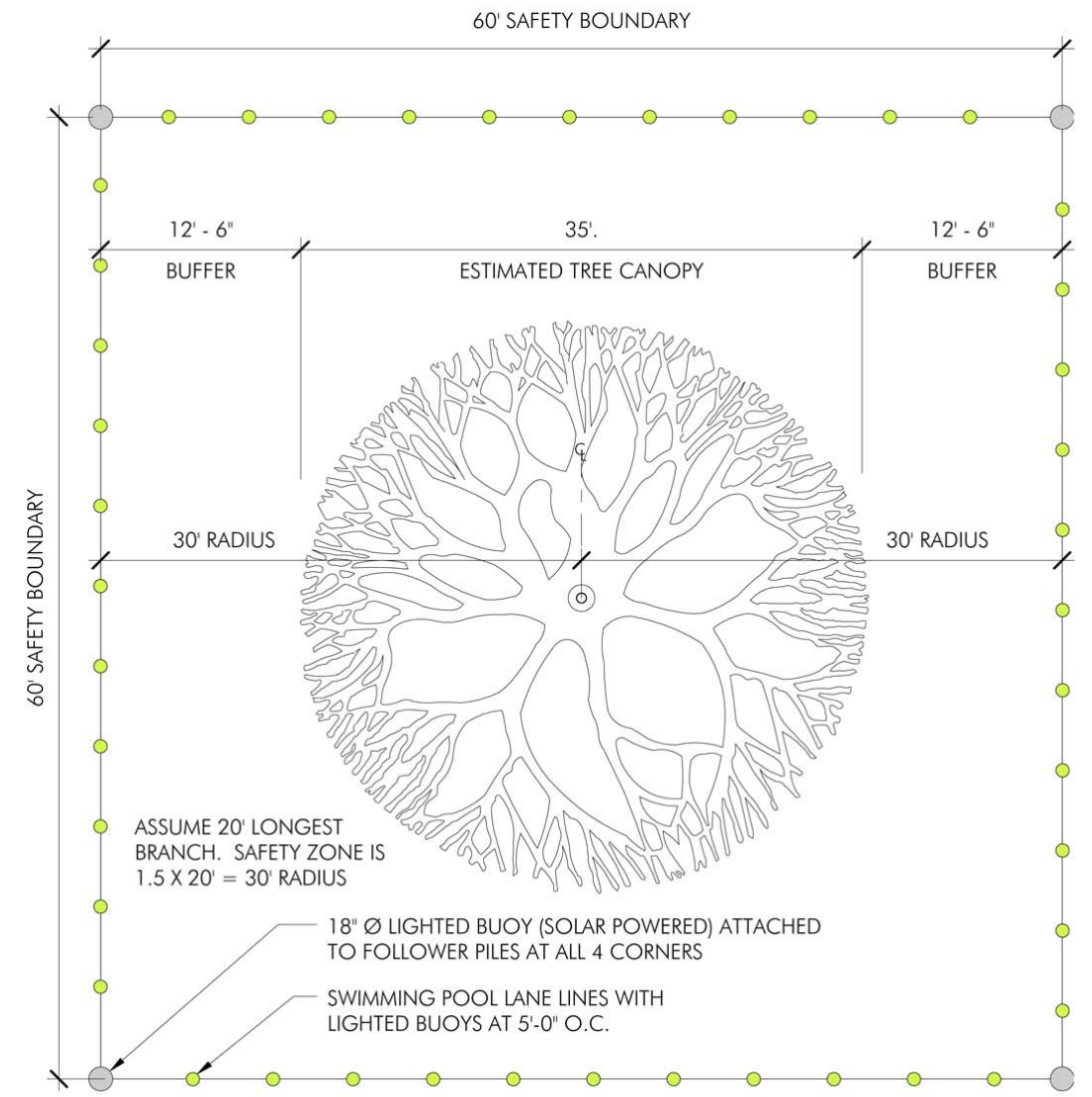
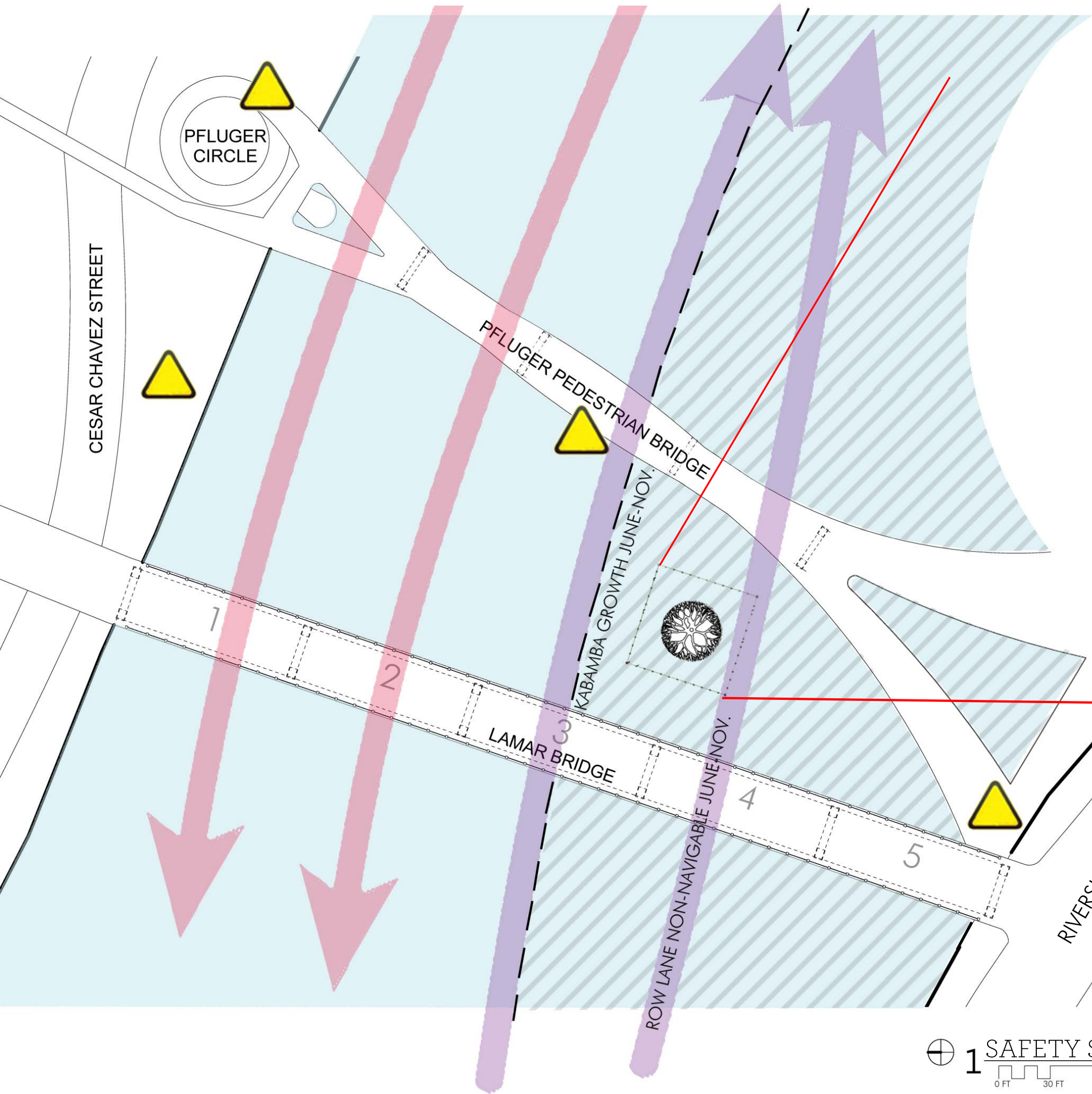
PRAYER FLAG
INSTALLATION





2 PILE INSTALLATION - SECTION VIEW
SCALE: 1/4" = 1'-0"

1 MOBILIZATION DIAGRAM
N.T.S.



1 SAFETY BOUNDARY - PLAN VIEW

1 SAFETY SITE PLAN

0 FT 30 FT 60 FT

15"

21"

Women & Their Work presents:
thirst
 This temporary installation memorializes the loss of 300 million trees that died in the Texas drought of 2011 and encourages us all to consider our relationship to water, our most precious resource.

In collaboration with Baoli Liu, visual artist
 Emily Little and Norma Yancy of Dayton & Little Architects
 Cassie Bergstrom and Daniel Woodruffe of dwg. urban landscape architecture
 This iconic tree on Lady Bird Lake and the 14,000 prayer flag meditation walk on the trail acknowledges the devastating impact of drought in Austin. It is the goal of THIRST to make the horrific loss visible while encouraging us all to consider conservation and sustainability.

Supported in part by the Robert Rauschenberg Foundation
 TREE EMERGENCIES DIAL 311



women & their work 

thirst

PARD STAFF RECOMMENDATION

Accept donation with the following modification(s):

Exhibition period of THIRST in City Parks will be reviewed after 6 weeks and PARD will determine if the installation can continue for another 6 weeks.

PARD received a much more complete proposal answering many of the outstanding questions. To complete the application, the donor must still provide:

- a lighting plan (to include the route and specs for the up lighting of the tree) ,
- letter from Kourtney DeHaas, and
- provide a map of the load-in route of the tree.

For contract stipulations requested by PARD staff, see attachment A.