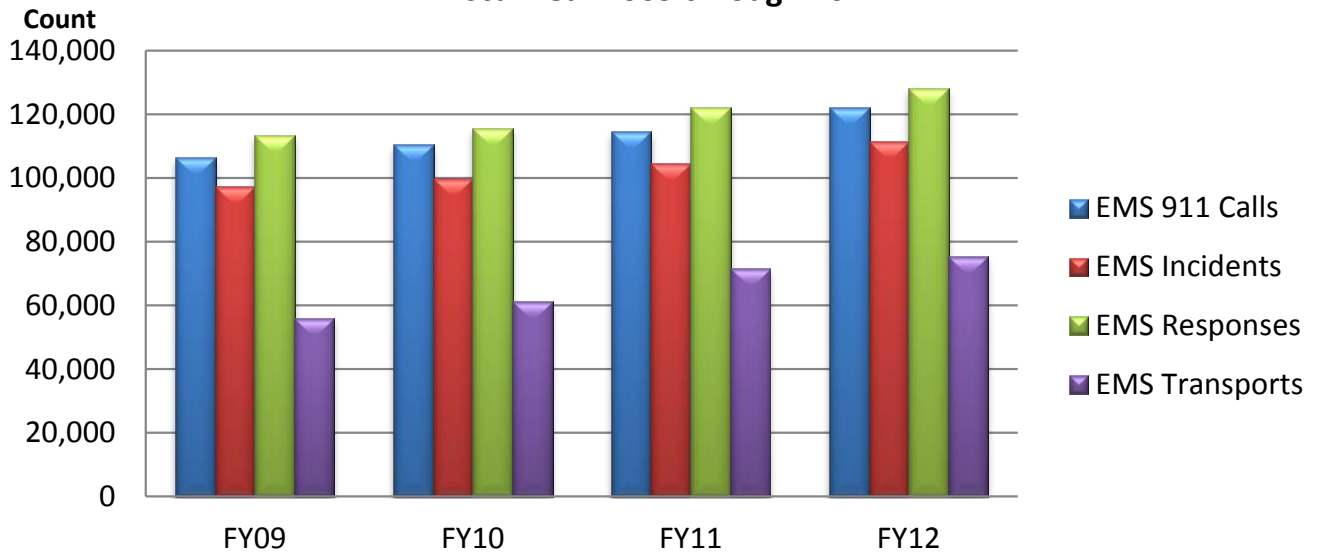


ATCEMS Workload Stats

Fiscal Year 2009 through 2012



	FY09	FY10	FY11	FY12
EMS 911 Calls	106,477	110,703	114,625	122,049
EMS Incidents	97,389	99,889	104,569	111,327
EMS Responses	113,410	115,637	122,071	128,334
EMS Transports	56,127	61,267	71,577	75,510