

# Austin-Bergstrom International Airport Terminal East Infill Project (TEIP)



City of Austin City Council Work Session  
August 6th, 2013



# Presentation Contents

Project Overview

Prior Council Actions

Airport Growth Performance

East Infill Project Details

Project Schedule

Costs for Construction Services

Next Steps and Council Actions



# Project Overview

- The TEIP is an airport terminal expansion project and the overall objective for the TEIP is to substantially increase the passenger processing capacity of ABIA by expanding the airport terminal to the East for the following airport elements:
  - Additional TSA passenger security screening lanes (reduce wait times)
  - Expansion Federal Inspection Services (meet new space standards)
  - Add additional inbound and outbound baggage devices (baggage carousels)
  - Add additional concession space
  - Replace TSA explosive detection machines that have met their useful lifecycle and improvements to secondary checked baggage resolution space.





## Prior Council Actions

### December 15, 2011-

Council authorized use of the Design-Build delivery method in accordance with Texas Government Code Section 2267, Subchapter G.

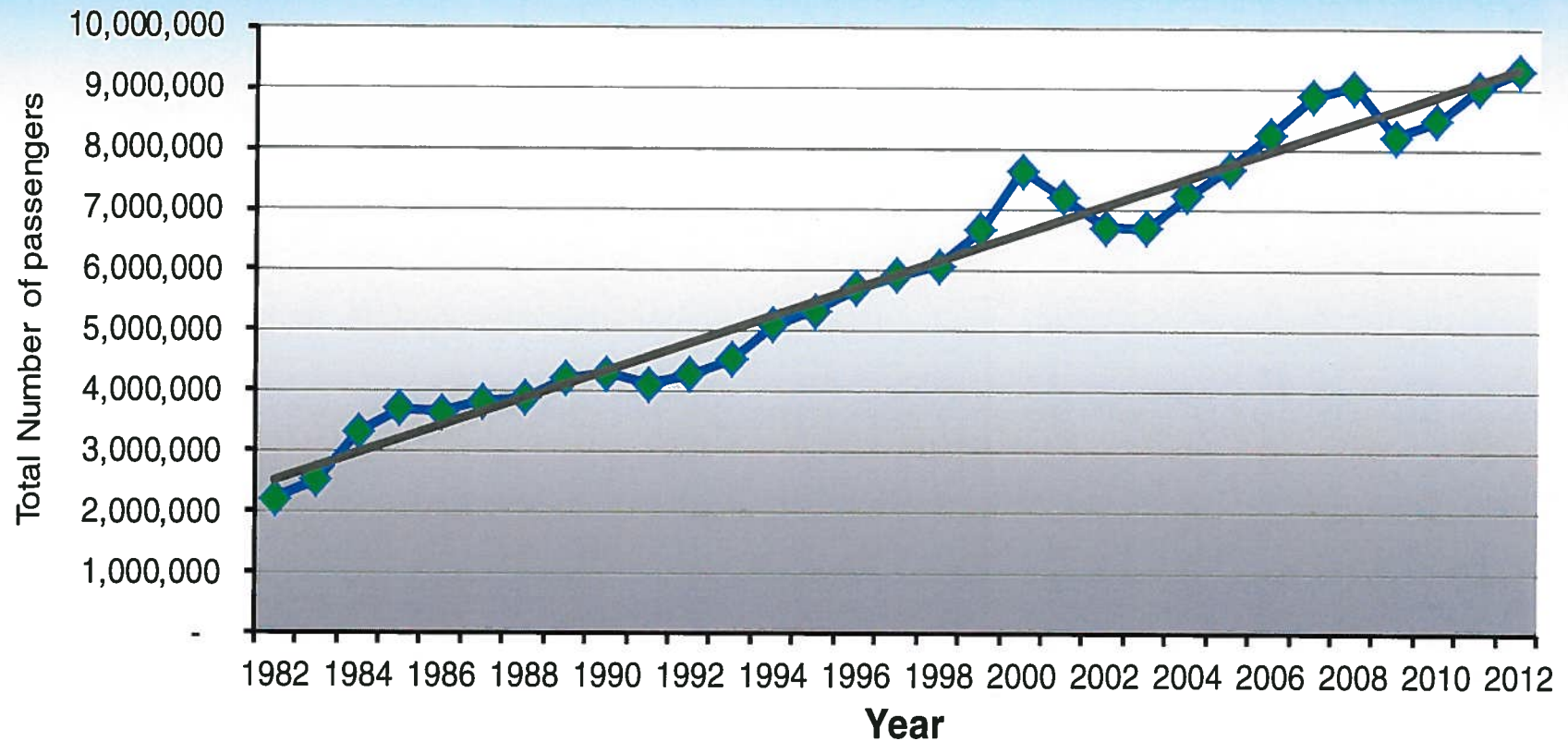
### October 18, 2012-

Approval to authorize negotiation and execution of a Design-Build Agreement with Hensel-Phelps Construction Company, Austin, TX for the Austin-Bergstrom International Airport (ABIA Terminal East Infill Project) preconstruction phase services in an amount not to exceed \$6,000,000.00; plus a \$300,000 Owner's Contingency.



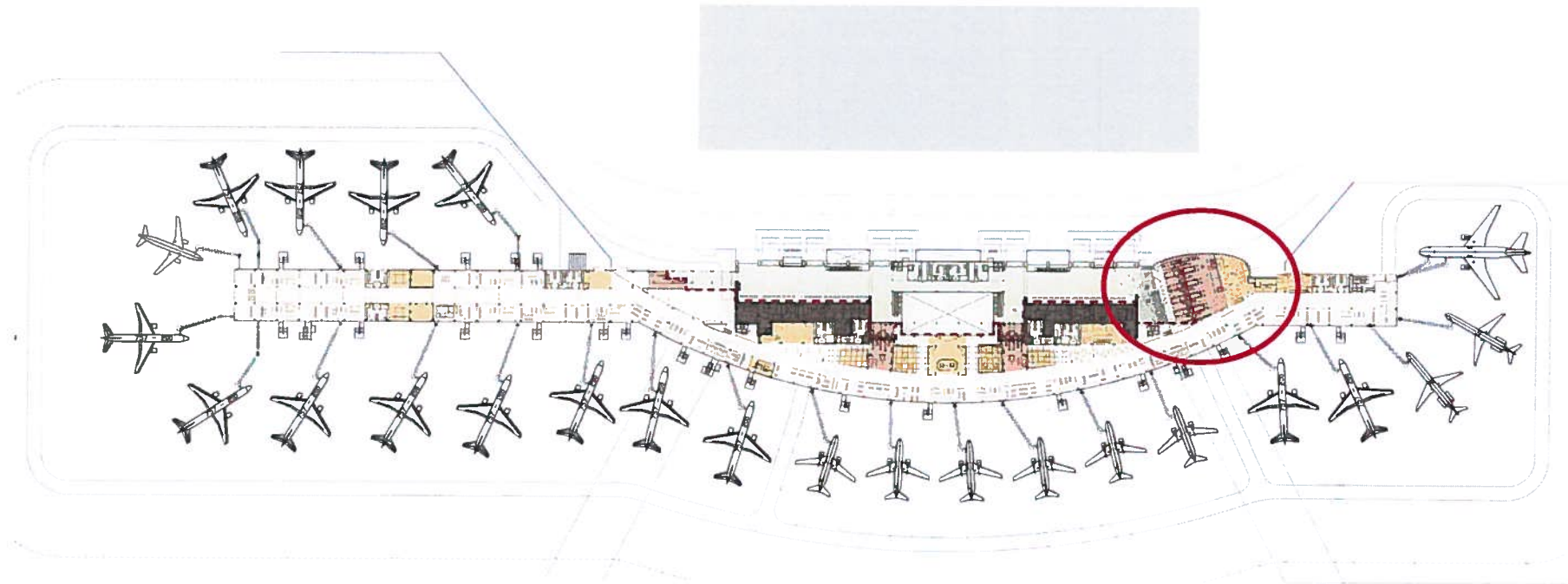
# Austin Total Passenger Growth

Since 1981 – 5.4% Average Growth





# Terminal Layout with East Infill Project



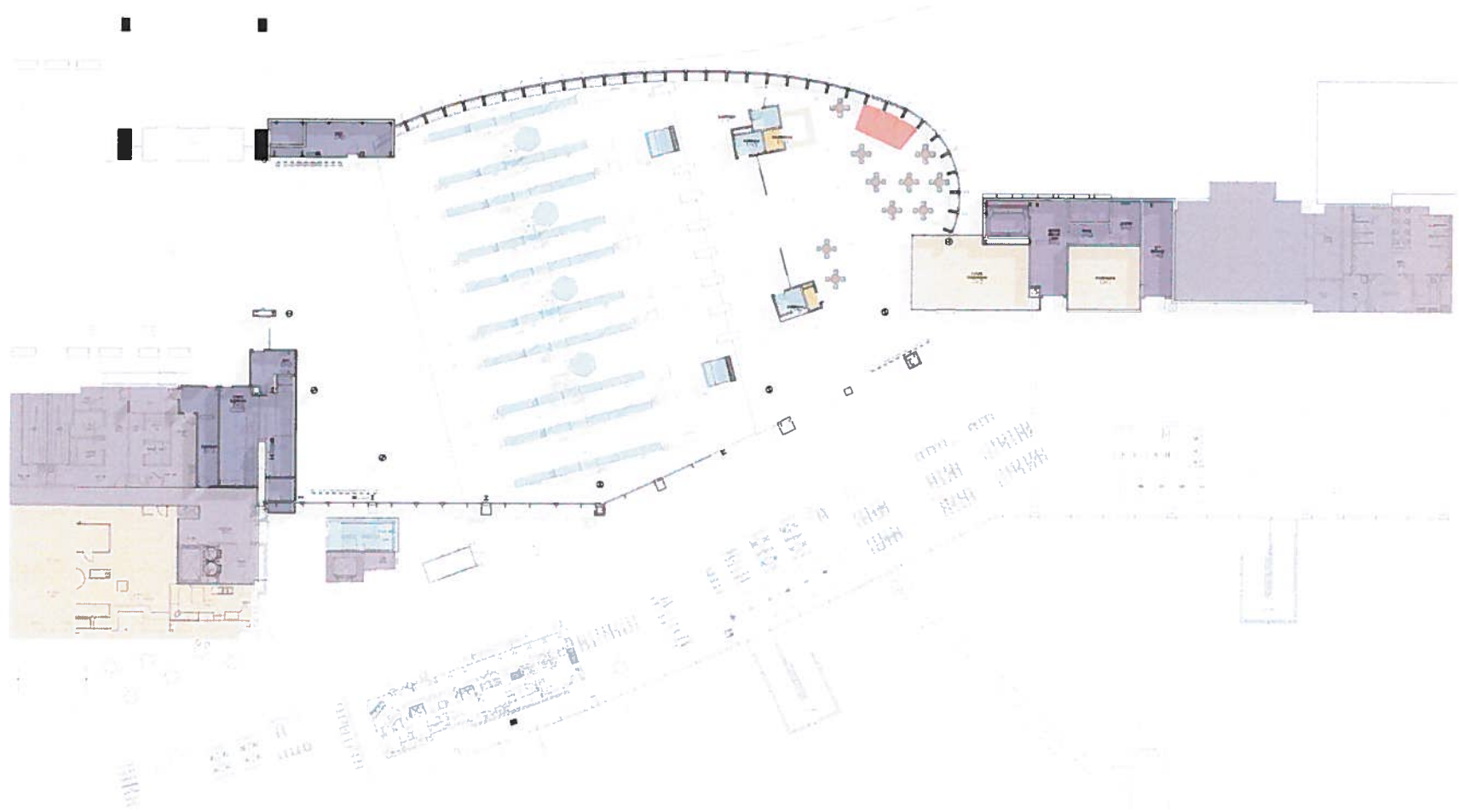
AUSTIN BERGSTROM INTERNATIONAL AIRPORT  
TERMINAL EAST INFILL PROJECT  
DESIGN DEVELOPMENT PRESENTATION  
JULY 8, 2013

FLOOR PLAN - CONCOURSE OVERALL 1" = 50'

- SECURITY LANES
- CONCESSION/RETAIL AREAS
- AIRSIDE CIRCULATION
- LANDSIDE CIRCULATION
- BACK OF HOUSE AREAS



# Concourse Level TSA Screening



AUSTIN BERGSTROM INTERNATIONAL AIRPORT  
TERMINAL EAST INFILL PROJECT  
DESIGN DEVELOPMENT PRESENTATION  
JULY 8, 2013

FLOOR PLAN - CONCOURSE 1/8" = 1'

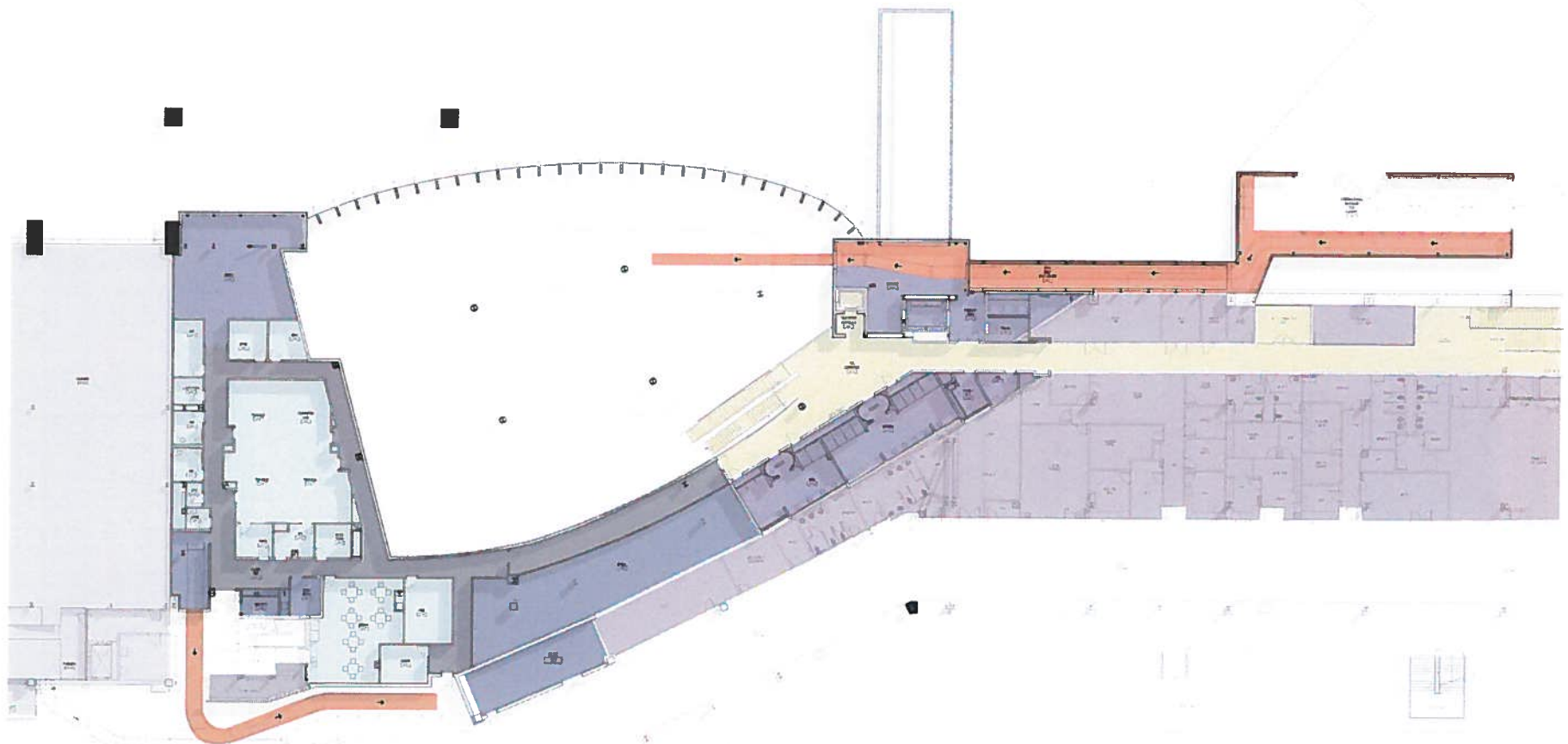
TSA AREAS  
NEW BACK OF HOUSE AREAS  
BACK OF HOUSE AREAS

CONCESSION AREAS  
ENTERTAINMENT AREAS

PageSouthernlandPage



# International Corridor



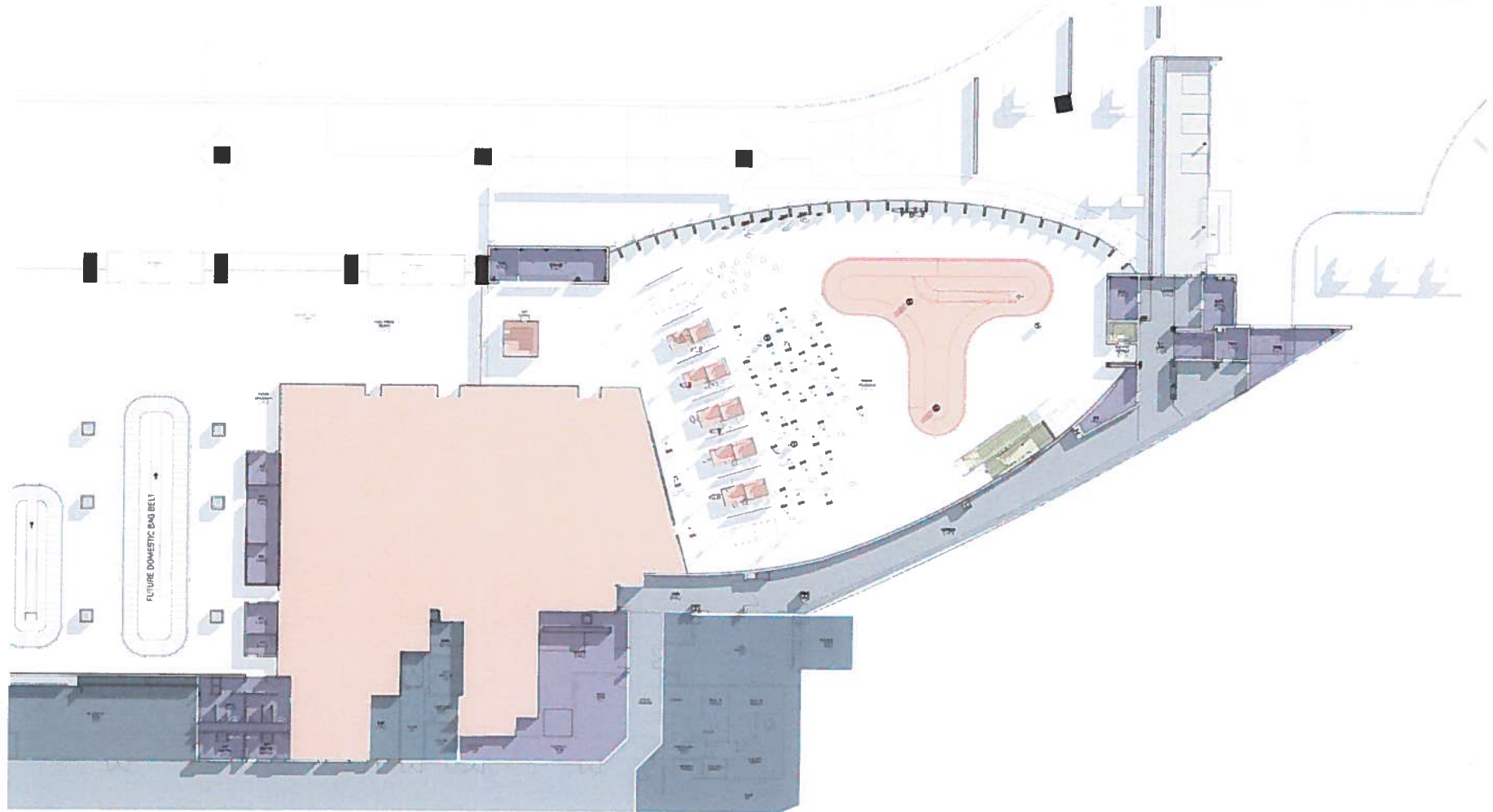
AUSTIN BERGSTROM INTERNATIONAL AIRPORT  
TERMINAL EAST INFILL PROJECT  
DESIGN DEVELOPMENT PRESENTATION  
JULY 8, 2013

FLOOR PLAN - APRON 1/8" = 1'

- CUSTOMS ADMINISTRATIVE AREAS (SECURE)
- CUSTOMS PASSENGER CIRCULATION
- TSA
- EXISTING BACK OF HOUSE AREAS
- NEW BACK OF HOUSE AREAS



# New Federal Inspection Space



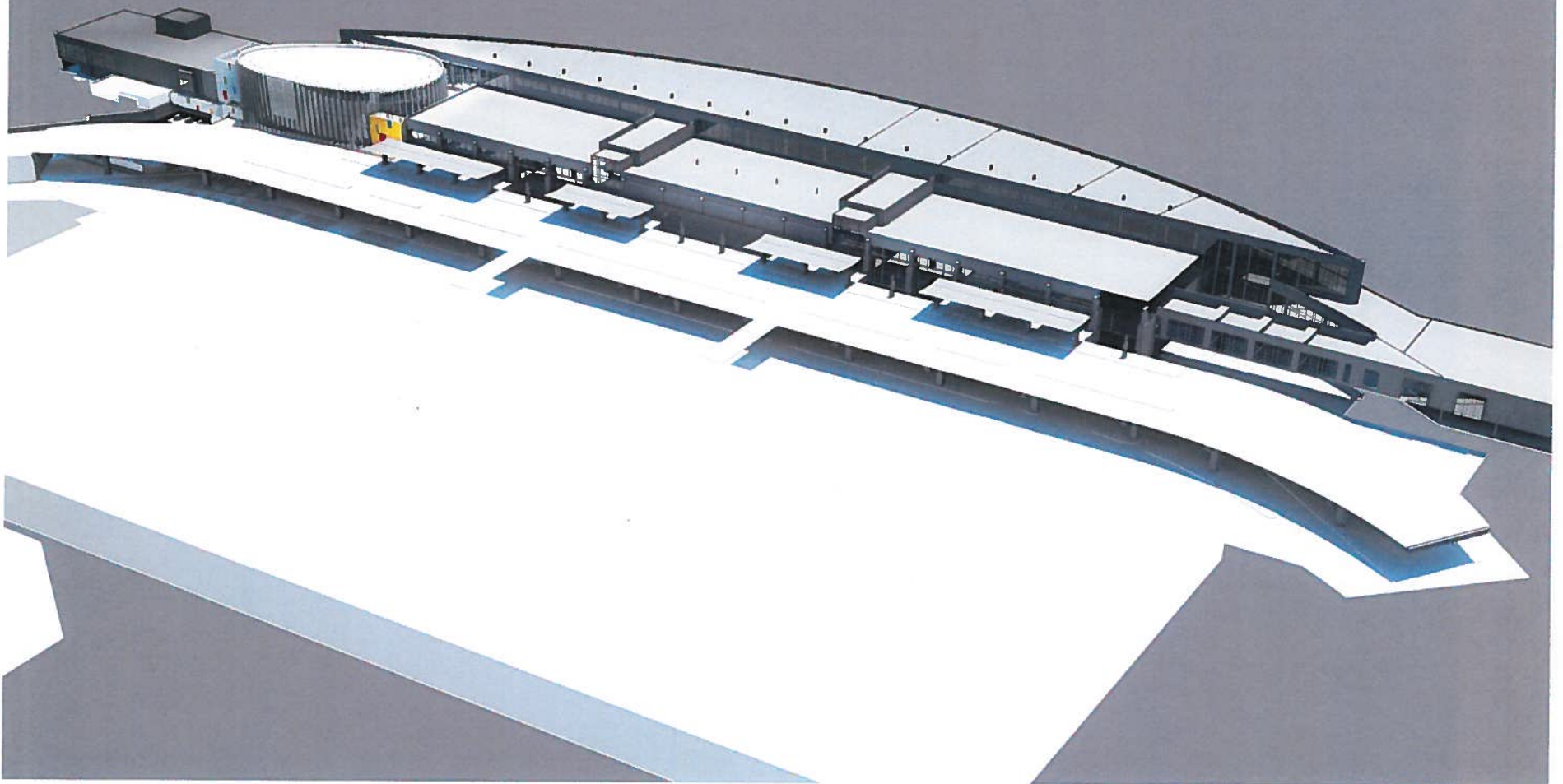
AUSTIN BERGSTROM INTERNATIONAL AIRPORT  
TERMINAL EAST INFILL PROJECT  
DESIGN DEVELOPMENT PRESENTATION  
JULY 8, 2013

FLOOR PLAN - BAGGAGE CLAIM 1/8" = 1'

- CUSTOMS ADMINISTRATIVE AREAS (SECURE)
- LOADING DOCK + SECURE CIRCULATION
- CUSTOMS PASSENGER CIRCULATION (VERTICAL)
- EXISTING BACK OF HOUSE AREAS
- NEW BACK OF HOUSE AREAS



# Terminal View



AUSTIN BERGSTROM INTERNATIONAL AIRPORT  
TERMINAL EAST INFILL PROJECT  
DESIGN DEVELOPMENT PRESENTATION  
JULY 8, 2013

AERIAL VIEW

PageSouthernlandPage



# Terminal Exterior View



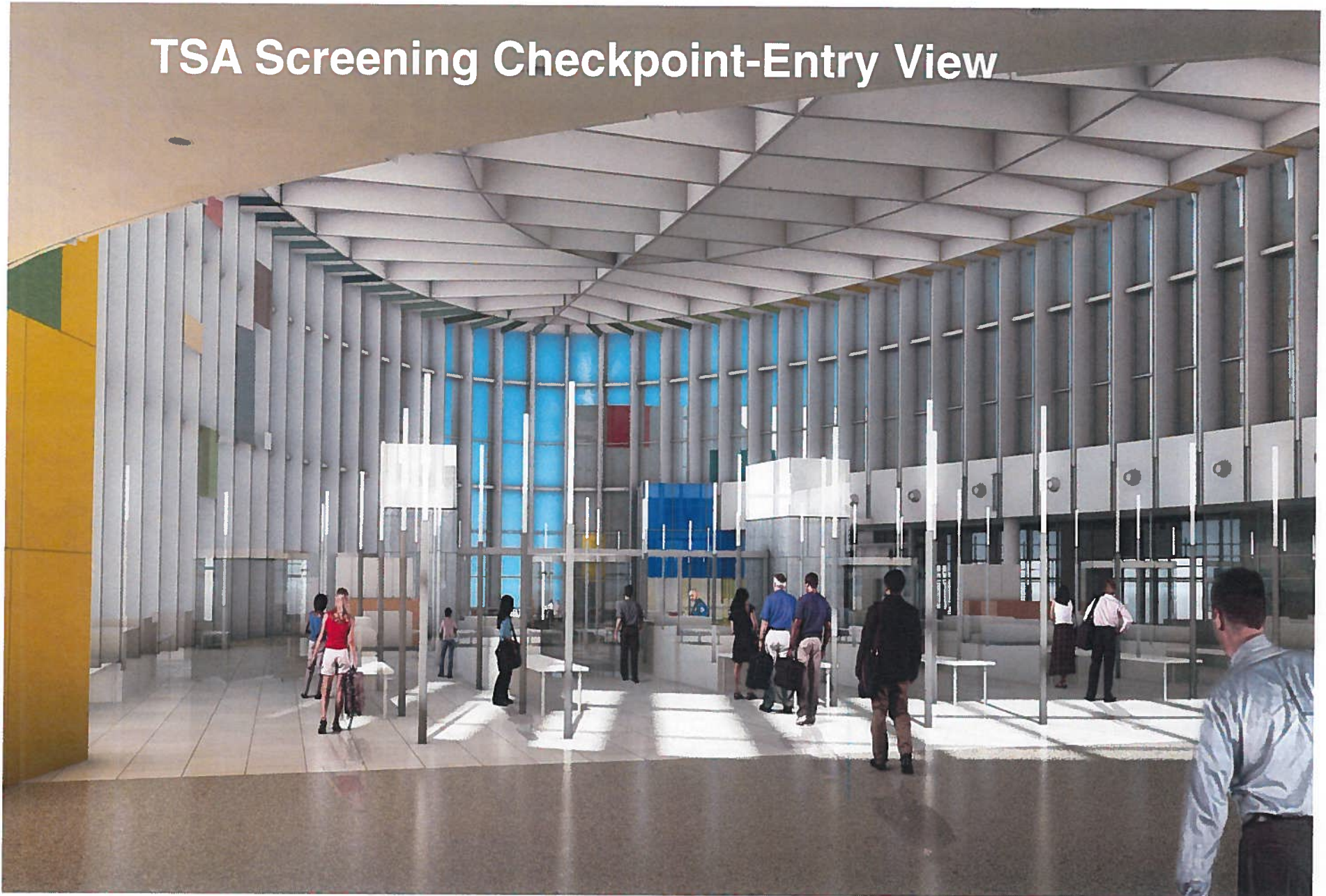
AUSTIN BERGSTROM INTERNATIONAL AIRPORT  
TERMINAL EAST INFILL PROJECT  
DESIGN DEVELOPMENT PRESENTATION  
JULY 8, 2013

GARAGE BRIDGE VIEW

PageSouthernlandPage



# TSA Screening Checkpoint-Entry View



AUSTIN BERGSTROM INTERNATIONAL AIRPORT  
TERMINAL EAST INFILL PROJECT  
DESIGN DEVELOPMENT PRESENTATION  
JULY 8, 2013

ENTRY VIEW

PageSouthernlandPage



# Checkpoint Recomposing Area



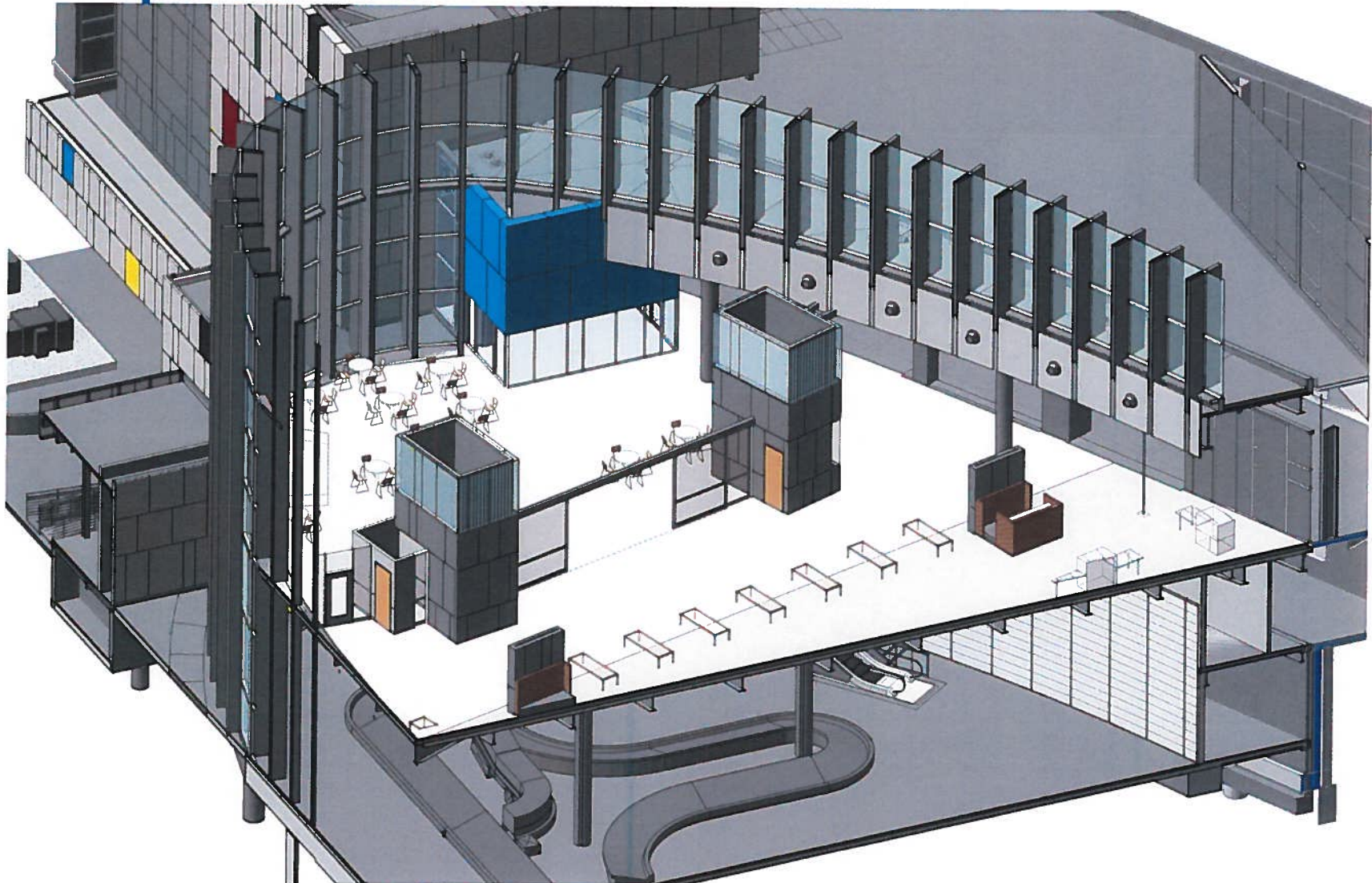
AUSTIN BERGSTROM INTERNATIONAL AIRPORT  
TERMINAL EAST INFILL PROJECT  
DESIGN DEVELOPMENT PRESENTATION  
JULY 8, 2013

POST-SSCP VIEW

PageSouthernlandPage



# Split Level View









# US Customs Primary Inspections



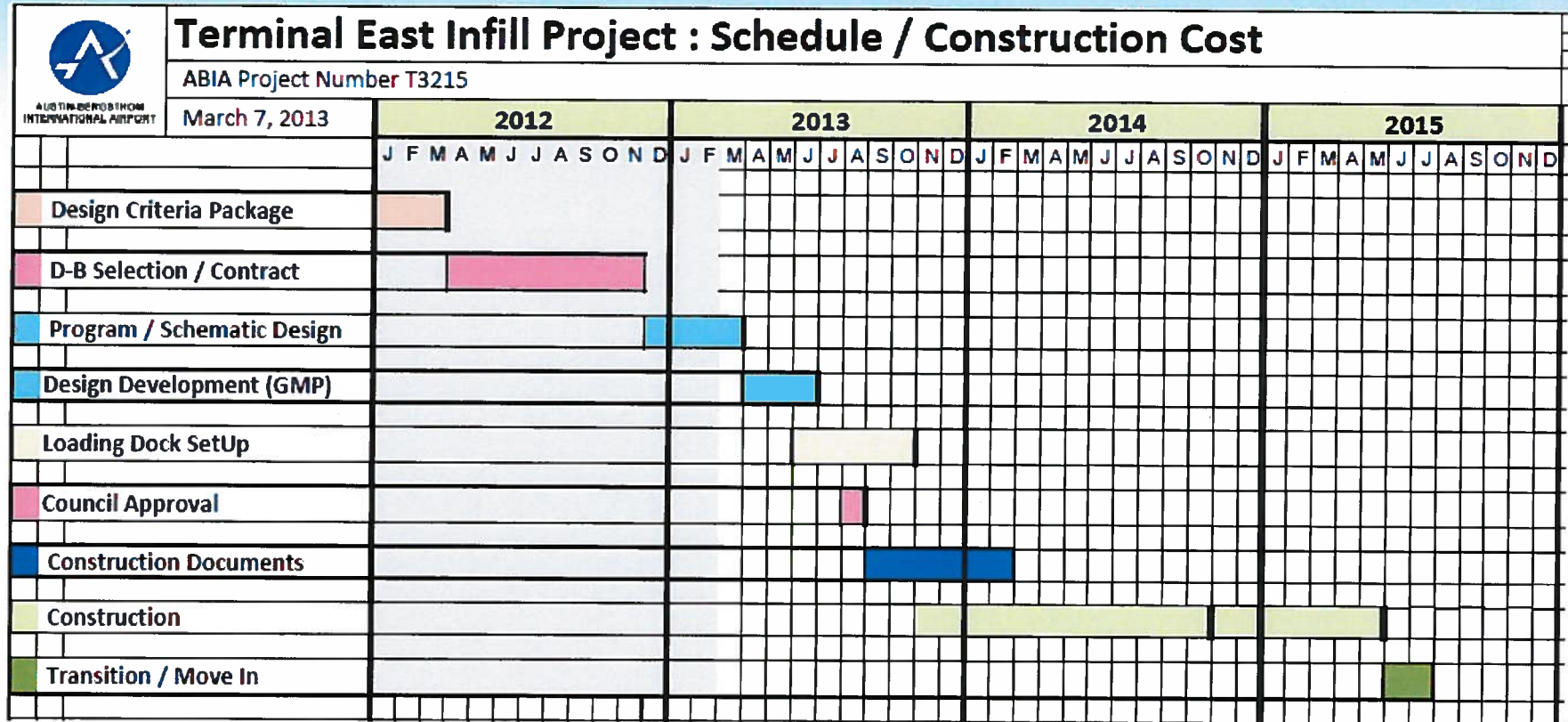
AUSTIN BERGSTROM INTERNATIONAL AIRPORT  
TERMINAL EAST INFILL PROJECT  
DESIGN DEVELOPMENT PRESENTATION  
JULY 8, 2013

BAGGAGE CLAIM VIEW

PageSouthernlandPage



# Project Schedule





## Construction Guaranteed Maximum Price (GMP)

Construction Services	\$59,450,000
<u>Owner Contingency</u>	<u>\$ 2,800,000</u>
GMP	\$62,250,000



# Project Finance Plan

- Issue Airport Revenue Bonds in Fall 2013
  - ✓ Bonds will be backed by Airport Revenues
  - ✓ Infill project is being financed initially with a temporary reimbursement or inducement resolution to fund the project in advance of an airport revenue bond issue planned for early 2014 (Jan, Feb.). Inducement resolution is on the August 8<sup>th</sup> City Council Agenda
  - ✓ We will start the bond issue process in November, 2013





## Next City Council Actions

- Council Action for GMP with the Design-Builder Aug 8<sup>th</sup>
- Inducement Resolution Aug 8<sup>th</sup>
- TEIP Project Bond Issuance Ordinance Jan/Feb 2014



- Questions