

## MEMORANDUM

**To:** Traffic Study Files

**From:** Austin Transportation Department

**Date:** June 28, 2013

**Subject:** Reduced Speed School Zone Investigation

**Location:** W. Longspur Boulevard

**Date(s) of Previous Investigation:** None

A traffic engineering investigation has been conducted to determine if reduced speed school zone is appropriate on W. Longspur Boulevard for students attending the Guerrero-Thompson Elementary School.

Austin Independent School District School (AISD) is constructing the new school scheduled to be open in 2013-2014 school year. This will increase pedestrian activity on W. Longspur Boulevard. Pedestrians including elementary students living in this residential area along W. Longspur Boulevard and surrounding residential streets are anticipated to cross this street if they choose to walk or bicycle between home and school.

The following information was collected and analyzed for this determination.

### **Proximity of the School Crossing to the School**

The proposed Guerrero-Thompson Elementary School is located in the southeast quadrant of Plover Drive and E. Pheasant Drive, south of W. Longspur Boulevard. The adjacent land uses are primarily residential including two large apartment complexes along W. Longspur Boulevard.

The City of Austin's Child Safety Program has committed an adult crossing guard at the intersection of W. Longspur Boulevard and Eastwend Drive to walk students to and from school and has requested a school zone along W. Longspur Boulevard to cover this intersection.

Eastwend Drive forms a 'T-intersection' at its intersection with W. Longspur Boulevard and is stop-controlled.

### **Pedestrian Count**

Because the 2013-2014 school year has not begun, no students have been counted crossing W. Longspur Boulevard. However, pedestrians from the surrounding neighbourhood including the two large apartment complexes along W. Longspur Boulevard are expected to cross as a part of their route to and from the school.

### **Existing Roadway Conditions**

Location	Number of Lanes	ADT: Two-Way	Posted Speed Limit	Street Width
W. Longspur Boulevard	2	3,031	30 MPH	40 feet
Eastwend Drive	2	-	30 MPH	30 feet

### **Presence of Adult Crossing Guard or Student Safety Patrol**

An adult crossing guard will be stationed at the intersection of W. Longspur Boulevard and Eastwend Drive to assist students with crossing W. Longspur Boulevard.

### **Crash History**

Austin Police Department's crash database was reviewed for crashes occurring between June 2012 and June 2013 on W. Longspur Boulevard. Six crashes were documented during this period.

### Crash History along W. Longspur Boulevard

Date / Time	Direction		Weather	Light	Road	Injury	Comments
	At Fault	Other					
12/21/12 6:25 PM	EB	WB	Clear	Dark	Dry	Minor	Unit 1 while making a U-turn struck Unit 2.
12/24/12 4:52 PM	SB	WB	Clear	Day	Dry	Minor	Unit 1 struck Unit 2 while going south from Plover Drive.
02/22/13 11:42 PM	WB	NB	Clear	Dark	Dry	Minor	Unit 1 struck a pedestrian crossing the W. Longspur Blvd from south to north approximately 75 feet east of 9800 Eastwend Drive.
03/16/13 7:42 AM	WB	WB	Clear	Dusk	Dry	Minor	Unit 1 struck 3 vehicles parked along W. Longspur Boulevard and 1 vehicle in the yard .
04/21/13 7:29 AM	WB	-	-	-	-	None	Unit 1 struck Unit 2 and 3. Unit 3 was pushed into Unit 4.
04/22/13 2:44 AM	EB	-	Clear	Dark	Dry	Serious	Unit 1 was driving EB on W. Longspur Blvd at high rate of speed and lost control and collided with a mailbox.

- Data not provided.

#### **Sight Distance**

The limits of the school zone are such that it negates the potential sight distance problems due to the curve on W. Longspur Boulevard, west of Eastwend Drive.

#### **Sidewalks and Ramps**

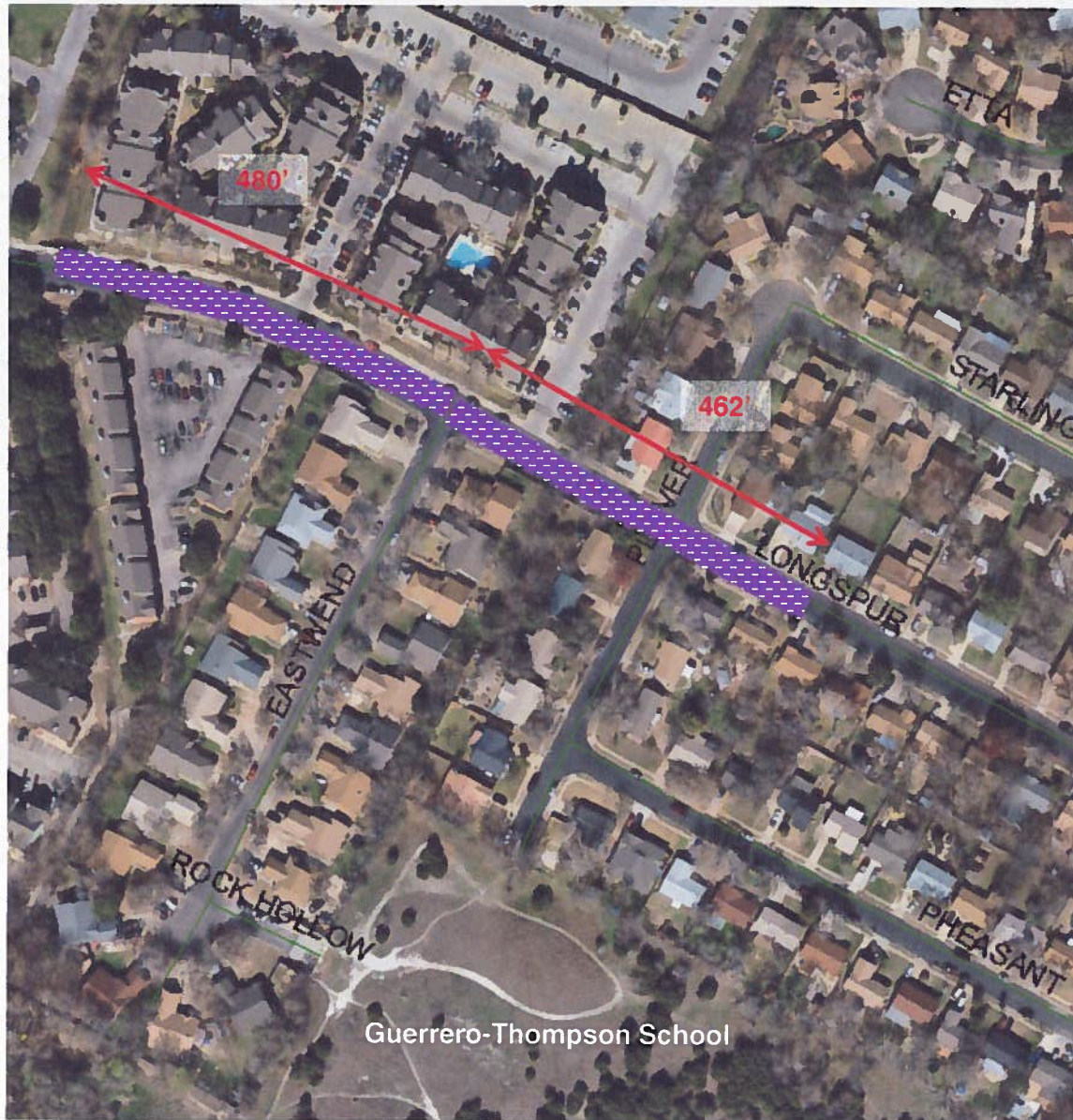
There are sidewalks on both sides of W. Longspur Drive. There is a sidewalk along the east side of Eastwend Drive. Pedestrian crosswalks are proposed to be striped across W. Longspur Boulevard (west of the intersection) and across Eastwend Drive (south of the intersection) once ADA compliant curb ramps are installed at the intersection.


**Recommendation**

Eastwend Drive forms a 'T-intersection' at its intersection with W. Longspur Boulevard and is stop-controlled. The City's Child Safety Program has committed an adult crossing guard at the intersection of W. Longspur Boulevard and Eastwend Drive to walk students to and from school and has requested a school zone along W. Longspur Boulevard to cover this intersection.

Based on the analysis of the information provided in the above sections, a reduced speed school zone of 20 miles per hour (mph) should be installed on W. Longspur Boulevard from 480 feet west of Eastwend Drive to 462 feet east of Eastwend Drive.

Figure 1 presents the study area and limits of proposed speed zones.



 Proposed 20 MPH School Zone (during peak school times)

**Figure 1: Study Area**