

**Austin Convention and Visitors Bureau/Historic Landmark Commission
Fall 2013 Grant Applicant Summary**

Grant Applicant: Friends of the Parks of Austin
City of Austin, PARD - Mayfield Park
Address: 2704 Macken Street, Austin, TX 78703

Project Summary: Mayfield Park Historic Landscape Master Plan

Creation of a master landscaping plan for Mayfield Park

Requested Grant Amount: \$ 18,335.00
Matching Funds/In-Kind: \$ 10,000.00

Previous Grants Received:	\$ 27,487.00	Fall 2006	Old Bakery and Emporium thru PARD
	\$ 42,255.00	FY 2010/2011	Swedish Cabin, Zilker Botanical Gardens**
	<u>\$ 69,742.00</u>		

Grant is outstanding.

Historical Significance Summary: Listed in on the National Register of Historic Places and is designated as a City of Austin Historic Landmark. The grounds are an example of a showcase garden of the 1920's and 1930's. The property was deeded to the COA after the death of Mary Mayfield Gutsch in 1971.

Tourism Impact: The guest register showed more than 4,000 people visited the park in 2011, with 2,000 of those coming from outside of Austin and guests representing 28 countries. The site hosted 67 events in 2011 with an attendance of 4,800. It is promoted on numerous tourist focused websites, such as, Trip Advisor, Celebrate Austin, Yelp and Guide to Outside Texas.

GRANT APPLICATION

Austin Convention and Visitors Bureau
Attn: Julie Hart, VP Finance & Operations
301 Congress Avenue, Suite 200
Austin, Texas 78701
Phone: 512-583-7205 Email: jhart@austintexas.org

DATE: July 12, 2013

HISTORIC PROPERTY AND ADDRESS:
Mayfield Park 3505 W. 35th Street, Austin, TX 78703

APPLICANT'S NAME: Friends of the Parks of Austin

APPLICANT'S ADDRESS: 2704 Macken Street, Austin, Texas 78703

NAME AND ADDRESS OF OWNER, IF DIFFERENT FROM APPLICANT:
City of Austin, PARD P.O. Box 1088 Austin, Texas 78767

TAX I.D. NUMBER/TAX STATUS: Employer ID # 742380174 Tax exempt # same. 501©(3)

PERSON PRESENTING REQUEST/CONTACT PERSON: Karen Cannatti

ADDRESS: 2704 Macken Street Austin, Texas 78703

TELEPHONE NO. 512-453-7074

E-MAIL: neenok@aol.com

FAX NUMBER: none

PROJECT NAME: Mayfield Park Historic Landscape Master Plan

DESCRIPTION OF PROJECT – PLEASE SUMMARIZE THE PROPOSED PROJECT. (IF DESIRED, APPLICANT MAY ALSO ATTACH AN ADDITIONAL SHEET MORE FULLY EXPLAINING THE PROJECT AND THE REASON FOR THE GRANT REQUEST.)

Mayfield Park Historic Landscape Master Plan will focus on the historic landscape of Mayfield Park Cottage and Gardens and its long-term preservation needs. The original Master Plan, commissioned in 1986, was significant in documenting specific landscape elements, particularly hardscape features. Additional research, analysis and documentation are required to address the larger site in development of a comprehensive landscape preservation approach that includes historic and existing circulation, vegetation, hardscape elements and topography, a plan that will assess and prioritize landscape preservation needs, interpretation goals, maintenance practices and establish a platform toward the development of sustainable practices.

PLEASE LIST HISTORIC DESIGNATIONS OF THE PROPERTY, AND IF LOCATED WITHIN A NATIONAL REGISTER OR LOCAL HISTORIC DISTRICT (PLEASE SPECIFY WHICH DISTRICT), AND IF THE PROPERTY IS CONTRIBUTING.

National Register of Historic Places (1994), City of Austin Historic Landmark

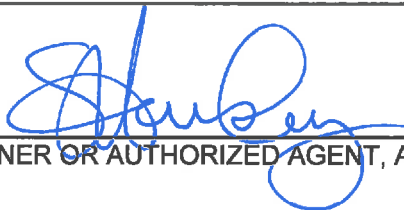
AMOUNT OF FUNDING REQUESTED: \$18,335.00

AMOUNT OF MATCH OR VALUE OF IN-KIND MATCH *** Please see comments below

DO LIENS EXIST AGAINST THE HISTORIC PROPERTY? () YES (X) NO

IF YES, DESCRIBE THE LIENS AND AMOUNTS

___N/A_____

 7/17/13

(OWNER OR AUTHORIZED AGENT, AND TENANT IF APPLICABLE)

*** As part of our commitment to appropriate and continuing sustainability of this historic site, Friends of the Parks of Austin has recently contracted with C'O Designs to restore the SE portion of Mayfield Gardens in a project that will implement necessary erosion control and wall stabilization in an area that has become hazardous to visitors and to the historic fabric of Mayfield Gardens. This project will begin in September, 2013. Although not included in this grant proposal, it is part of the overall historic landscape plan. The \$10,000.00 erosion control and wall stabilization project is funded by Friends of the Parks of Austin.

DESCRIPTION OF PROJECT.

Mayfield Park is a 23 acre wooded estate that was given to the City of Austin in 1971 by Mary Mayfield Gutsch, whose father, Allison Mayfield, was a prominent Texas political figure for over 26 years spanning the 1890's-1920's. The Mayfield Park/Community Project (MP/CP) was formed in 1986 to restore the deteriorating house, outbuildings, ponds and gardens in the two acres within rock walls. With community support, MP/CP commissioned and funded a master plan, developed by Gregory Free, which guides all restoration of Mayfield Park and was the foundational work for the park's nomination to the National Register of Historic Places. Since then, nearly \$400,000.00 in cash and more than \$500,000.00 in volunteer hours have been given by the community to restore the foundation, plumbing, house interior and exterior, two outbuildings, flower beds, rock garden, pigeon cote, iron gates and native trees. Also completed have been landscape lighting, irrigation, restoration of 6 ponds, and repair of rock terraces, walls and structures which had deteriorated since being built in the 1920's. Currently, MP/CP has commissioned and funded an Erosion Control and Wall Stabilization project that will stabilize an important part of the gardens area and create a walkway that is no longer a safety hazard to visitors. Its completion, while part of the original master plan, is also considered as the first phase of the **Mayfield Park Historic Landscape Plan**.

The **Mayfield Park Historic Landscape Master Plan** will focus on the historic landscape of Mayfield Park Cottage and Gardens and its long-term preservation needs. The existing Master Plan, commissioned in 1986, has guided the care and restoration of the cottage and gardens and was significant in documenting specific landscape elements, particularly hardscape elements, as well as cataloguing the various native and heirloom plants either existing in the gardens at that time or that were historically to be found there.

Since the era of its highest development, c. 1920's-1950's, the landscape has matured, necessitating an assessment of a comprehensive landscape preservation approach that will also preserve the authenticity of this historic site.

Friends of the Parks of Austin dba MP/CP has commissioned historic landscape architect, Catherine O'Connor, to develop the **Mayfield Park Historic Landscape Master Plan**. The areas of research, analysis and documentation will include historic and existing circulation, vegetation, hardscape elements and topography. The ultimate object is to develop a plan that will assess and prioritize landscape preservation needs, interpretative goals, maintenance practices and establish a platform toward the development of sustainable practices.

**Mayfield Park Historic Landscape
Master Plan Proposal**

The Historic Landscape Master Plan will focus on the historic landscape of Mayfield Park and its long-term preservation needs. To date, landscape preservation and care has been guided by a flexible framework established in the Gregory Free Master Plan. Though this work was significant in documenting specific landscape elements, particularly hardscape features, additional research, analysis and documentation is required to address the larger site toward the development of a comprehensive landscape preservation approach.

Areas of research, analysis, and documentation will include historic and existing circulation, vegetation, hardscape elements, and topography. The ultimate objective is to develop a plan that will assess and prioritize landscape preservation needs, interpretative goals, maintenance practices and establish a platform toward the development sustainable practices.

<u>Task</u>	<u>Estimated Cost</u>
Research (review of oral histories, plans and documents)	\$800
Historic Analysis and Plan	\$2000
Existing Conditions Tree and Topographic Survey (by Professional Surveyor)	\$3500
Existing Conditions Plan & Analysis	\$2000
Treatment Plan & Written Preservation Recommendations	\$3820
Interpretative Analysis and Recommendations	\$1200
Maintenance Analysis and Approach Recommendations (meetings with City Maintenance Staff & Volunteer Groups)	\$1200
Sustainability Analysis and Recommendations	\$800
Construction details & specifications (ie., for walls, paving, plantings, ponds)	\$2215
Meetings with Regulatory Commissions, Mayfield Council, and COA Parks and Recreation	\$800
TOTAL:	\$18,335

1) TOURISM JUSTIFICATION.

Mayfield Park is unique in Central Texas. No other site with the architectural and landscape features of this era is available to the public. According to Bruce Jensen, landscape historian with Texas Historic Commission, in his nomination of Mayfield Park to the National Register of Historic Places, "Few gardens in the state combined styles as fluidly as the Gutsches did at their estate." In citing other Austin gardens from that period that survived in some form, they "...didn't retain a high level of integrity" as they "...suffered intrusions and loss of historic fabric and plantings." ... "Using guidelines developed to restore historic plantings, volunteers at Mayfield Park tend beds in the Upper Garden, including the herbaceous garden, rock garden and rose garden. As a result, the property once again reflects the splendor of the estate's period of significance."

Mayfield cottage and gardens provide an indoor-outdoor setting for family gatherings, nature study, retreats and social events. It has been highly recommended as a destination for official visitors to the city. It is one of the most popular site for reservation requests for Parks and Recreation properties, often hosting guests from all over Texas and beyond.

Mayfield Park has been acclaimed as part of the tourist triangle that includes Laguna Gloria and Mount Bonnell. Visitor registration reflects that viewpoint. Visitors are attracted to Mayfield Park because of the beauty and peaceful respite it offers, as they meander through the cottage gardens and lily ponds and observe resident herons, colorful peafowl and other wildlife.

Although it receives little official publicity, some information sources mentioned by visitors are: word of mouth, tourist guidebooks and magazines, Austin Convention and Visitors Bureau, Texas Travel Guide, USA Guide Book internet, hotels, Austin Tour Company, Fromer's Guide to Austin, NPR radio, even people looking for Mount Bonnell! Tourists from nearly every state and 30-40 foreign countries sign the registration book each year. Although informal observations have noted that most visitors do not stop at the untended "sign in" mailbox, over 10,000 annual visitors, including those who attended events at Mayfield, were recently documented. Approximately 1/3 of walk-in visitors are from outside Austin.

Information about Mayfield Park is available on line, at Mayfieldpark.org. Garden tours are available by appointment. Brochures are available on site. Mayfield Park is listed on ACVB website.

2) HISTORIC DOCUMENTATION Please see 1920's-1950's photos of Mayfield cottage, ponds, rock gazebo and grounds.

3) CERTIFICATE OF APPROPRIATENESS FOR CITY DESIGNATED LANDMARKS. Received prior to Erosion/Wall Stabilization project.

4) PROJECT BUDGET. Please see accompanying estimated cost budget for **Mayfield Park Historic Landscape Master Plan**. Please see explanation for amount of match on p. 2 of application.

5)THREE COMPETITIVE BIDS

Nine months ago MP/CP volunteers recognized the need to address a major water flow problem in the SE quadrant of Mayfield Gardens. Erosion had undermined the landscaping and exposed underground rocks and tree roots, also threatening the foundation of the arched rock gazebo, site of numerous wedding ceremonies. We initially asked PARD landscape architects for an assessment, which they gave, but PARD funding was not available. Then, we researched three historic landscape architect firms for assessments of how to correct the erosion problems in a manner appropriate to the site. Besides PARD landscape architects, the following landscape architects specializing in historic properties were contacted for bids for an erosion and repair project in the SE quadrant of Mayfield Gardens

Bob Richardson, Architect . Bob Richardson referred me to another architect

John Volz & Assoc. John Volz declined but recommended C'O Designs

Catherine O'Connor of C'O Designs

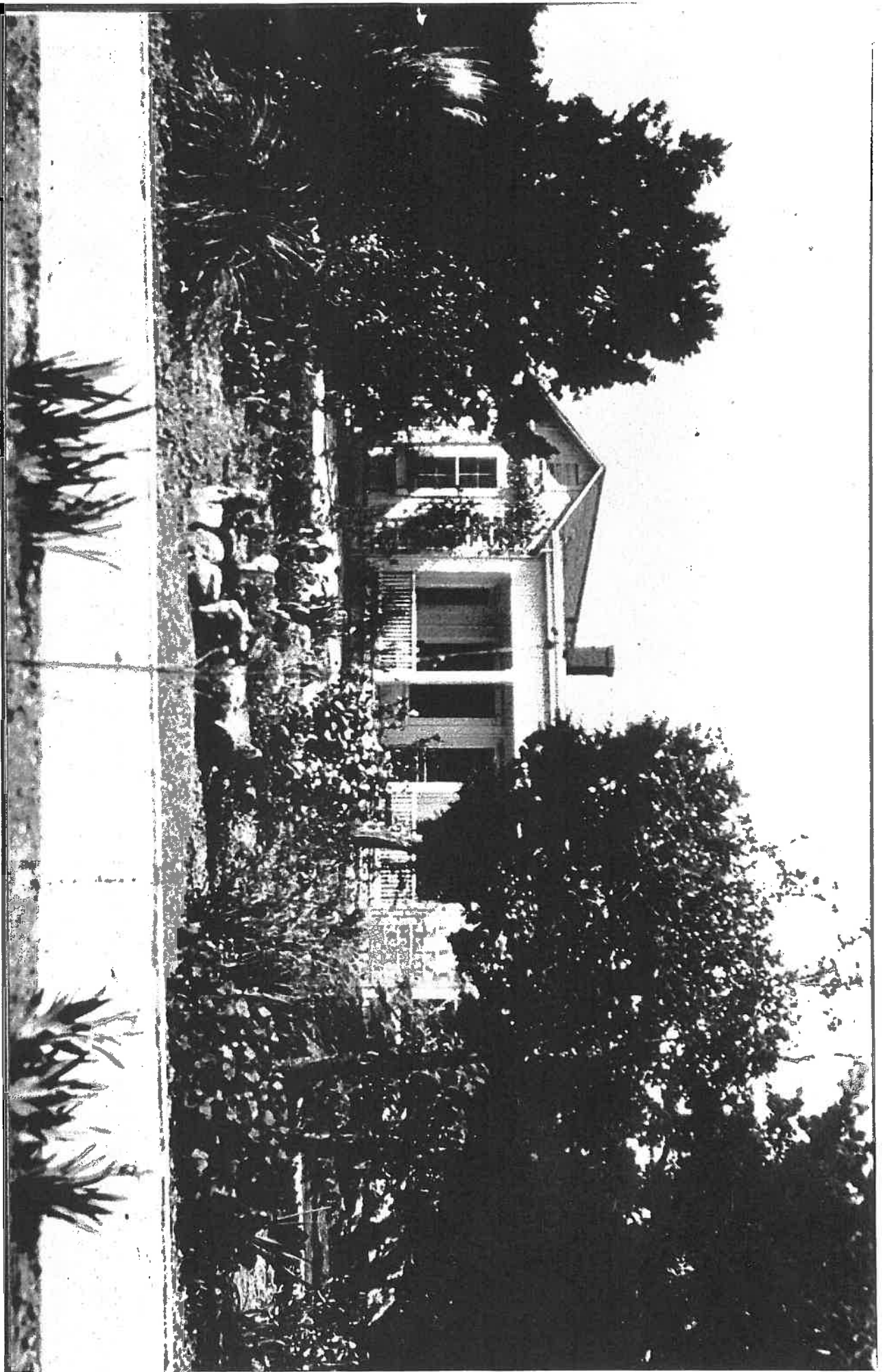
MP/CP accepted a bid from C'O Designs for design and implementation of Erosion Control and Wall Stabilization Plan, which has become the first phase of the **Mayfield Park Historic Landscape Master Plan**. MP/CP is funding the Erosion plan (\$10,000.00), to begin in September, 2013. MP/CP is requesting funds from ACVB/HLC to complete phase two, the Historic Landscape Master Plan.

6) PROJECT SCHEDULE Previously funded Erosion/Wall Stabilization project begins Sept., 2013. **Mayfield Park Historic Landscape Master Plan** will begin as soon as funding becomes available.

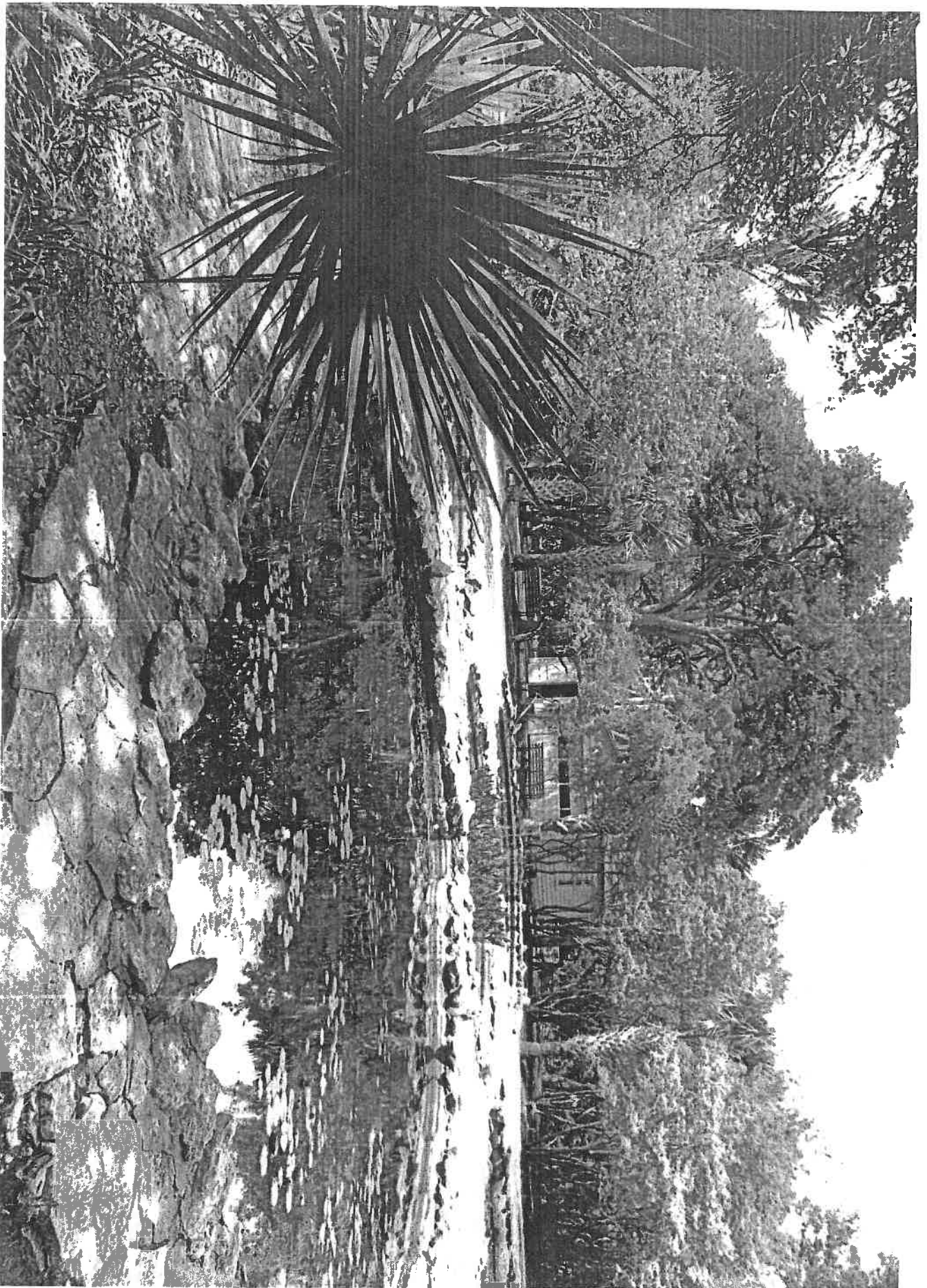
7) PROOF OF OWNERSHIP/AUTHORIZATION Please see p.2 of grant application

8) INSURANCE Not applicable

9) PLANS AND SPECIFICATION OF PROPOSED WORK Please see budget plan



AF - PARKS P1200(16)
Mayfield Park
P10A 28279







PICH 07731, Austin History Center, Austin Public Library