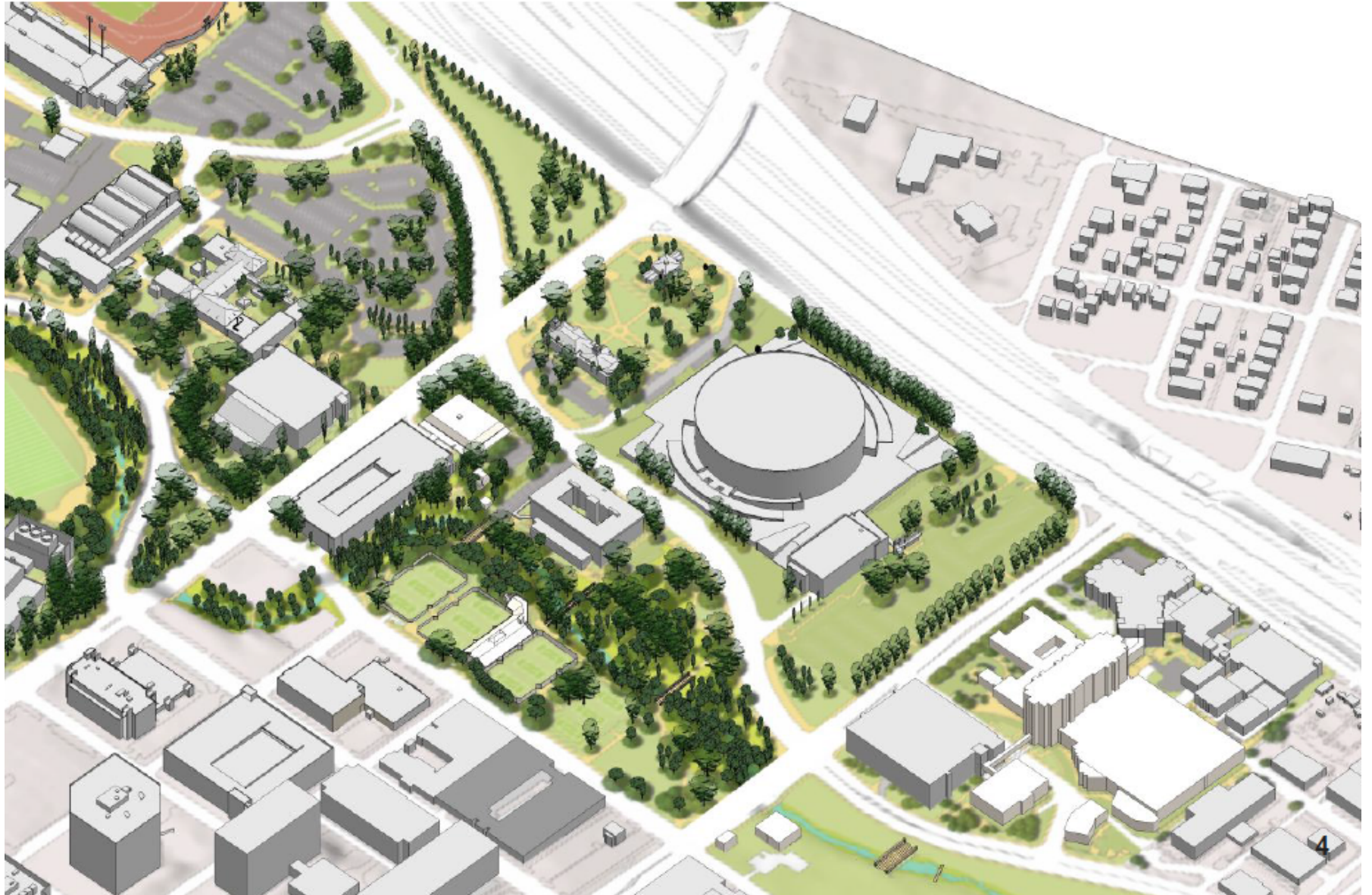


UT Medical School Master Plan



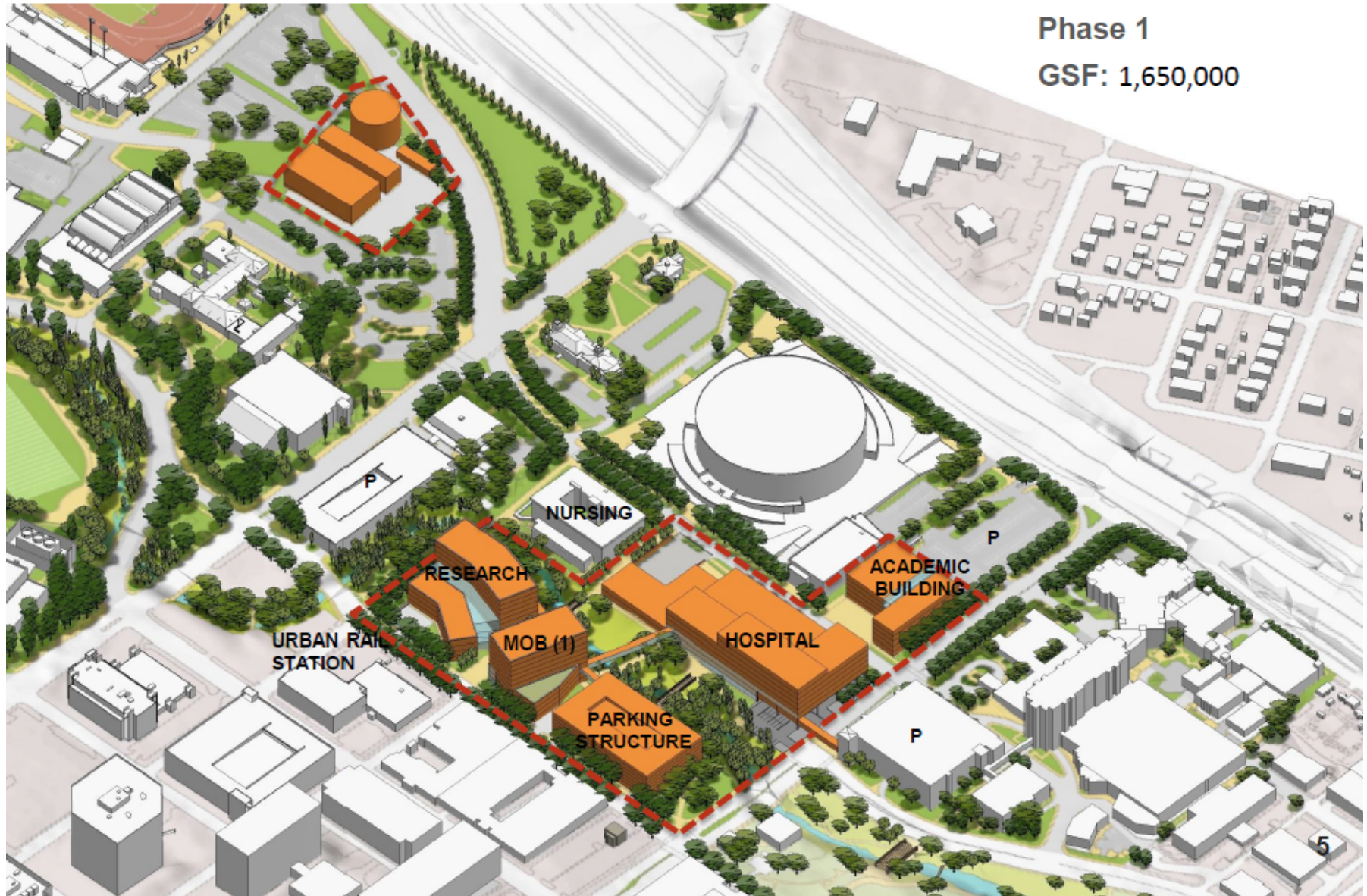
- Proposed realignment of Red River
 - Accommodate UT master plan
- Multi-phased grid realignment
 - Phase 1: MLK Jr. Blvd to 15th Street
 - Phase 2: 15th Street south

EXISTING



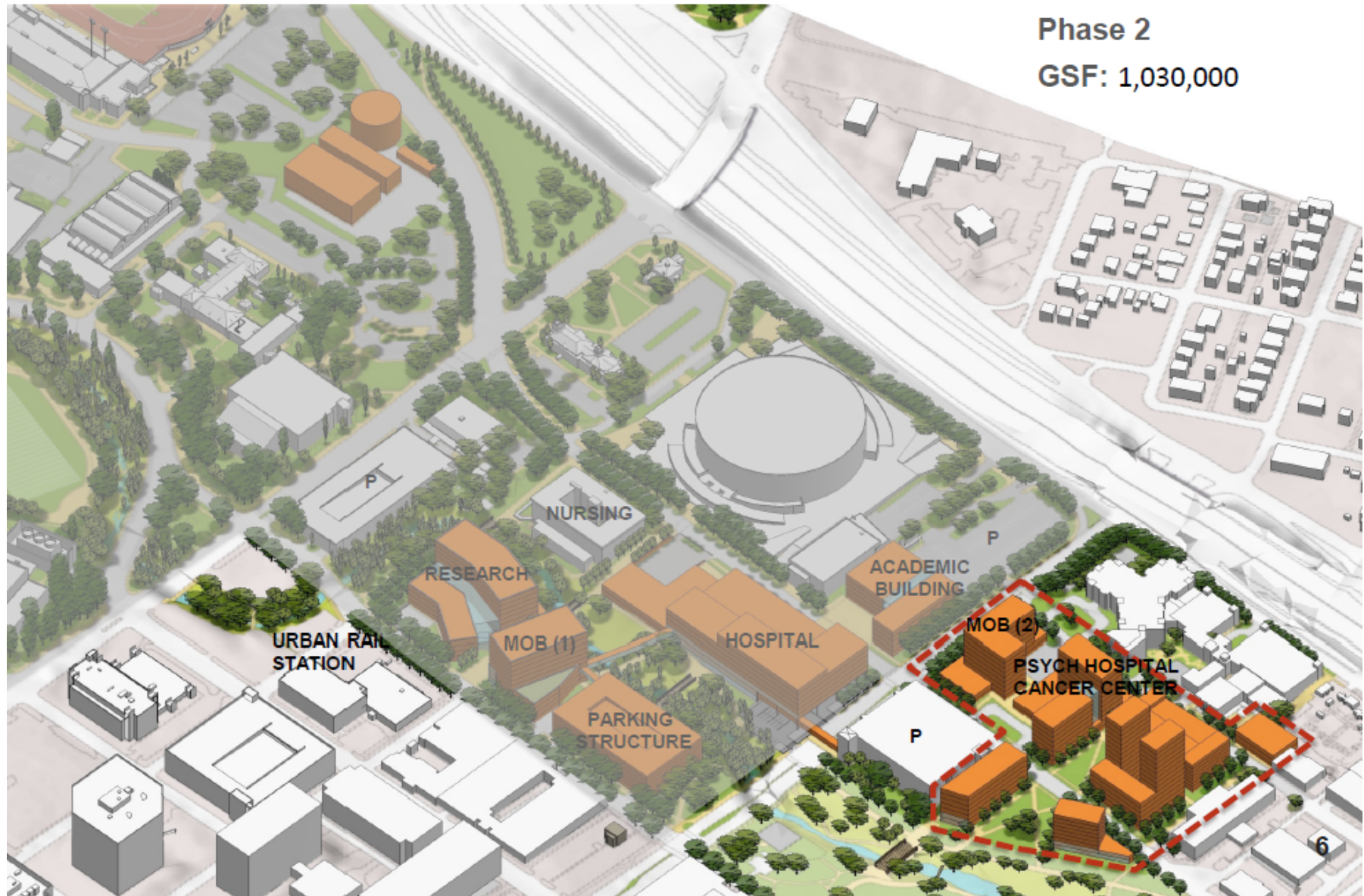
PHASE 1

Phase 1
GSF: 1,650,000



PHASE 2

Phase 2
GSF: 1,030,000



PHASE 3

15th Street



FULL BUILDOUT

15th Street

Full Build Out

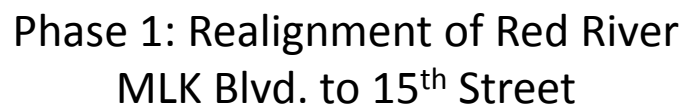
Total GSF: 4,540,000

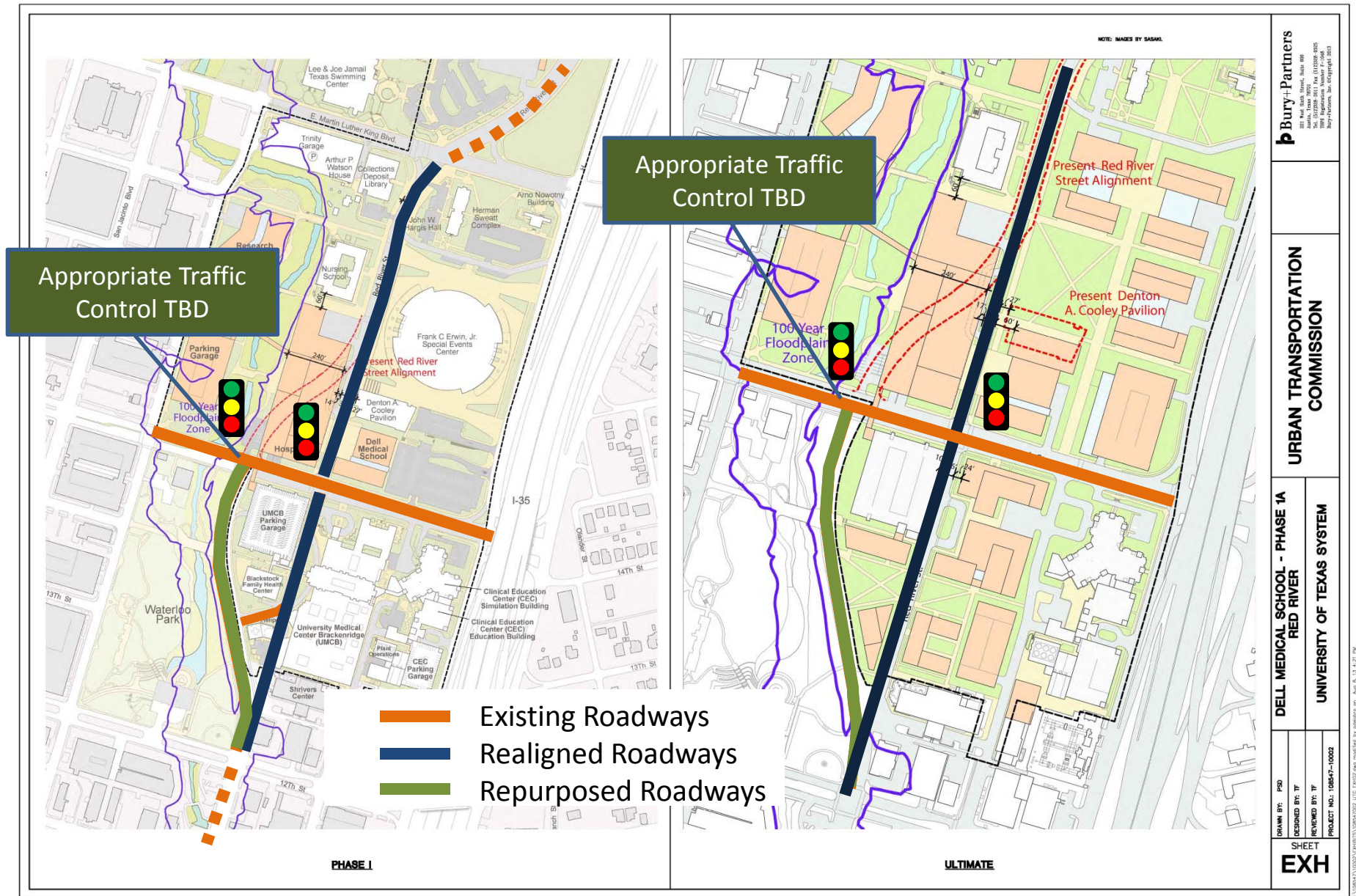
Phase 1 GSF: 1,650,000

Phase 2 GSF: 1,030,000

Phase 3 GSF: 1,860,000





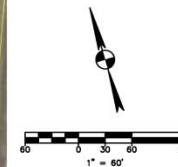


Phase 2: Realignment of Red River
South of 15th Street

Phase 2: Realignment of Red River
South of 15th Street

Phase 1: Realignment of Red River - MLK Blvd. to 15th Street

The map illustrates the proposed realignment of the Red River and MLK Blvd. from Trinity Street to East 15th Street. Key features include Trinity Street, Red River, MLK Blvd., East 15th Street, and the large circular stadium. Orange arrows indicate the river's path from Trinity Street to East 15th Street, and a blue arrow indicates the river's path from East 15th Street to the stadium area.



b Bury+Partners
221 West Sixth Street, Suite 600
Austin, Texas 78701
Tel. (512)259-0611 Fax (512)240-0325
TTYPE Registration Number F-1048
Bury+Partners, Inc. ©Copyright 2013

**URBAN TRANSPORTATION
COMMISSION**

DELL MEDICAL SCHOOL - PHASE 1A
RED RIVER

UNIVERSITY OF TEXAS SYSTEM

DRAWN BY: PSD
DESIGNED BY: TF
REVIEWED BY: TF
PROJECT NO.: 108547-10002

SHEET
EXH

New Red River Alignment

- Returns Red River to historic alignment in phases
- Ownership and operation of Red River remains City of Austin
- Utilities relocated and constructed by UT
- Contemplates a complete street design through medical campus, consistent with UT master plan
 - Transit (enhanced to accommodate future HC routes)
 - Pedestrian (enhanced)
 - Bikes (maintained)
 - Autos (emphasis reduced)

Staff Recommendation

- Staff recommends that the City Council approve City Manager to negotiate and execute an interlocal agreement between the City and the University of Texas to realign Red River between Martin Luther King Jr. Boulevard and E. 15th Street.
- Staff to continue to work with the University of Texas and Seton Hospital to provide the best possible facilities for pedestrians, cyclists and transit users.