

# Guadalupe MLK to 24<sup>th</sup> Interim Improvement Project – Lessons Learned

- We should bring these types of projects to the BAC
- The detour should have been handled proactively

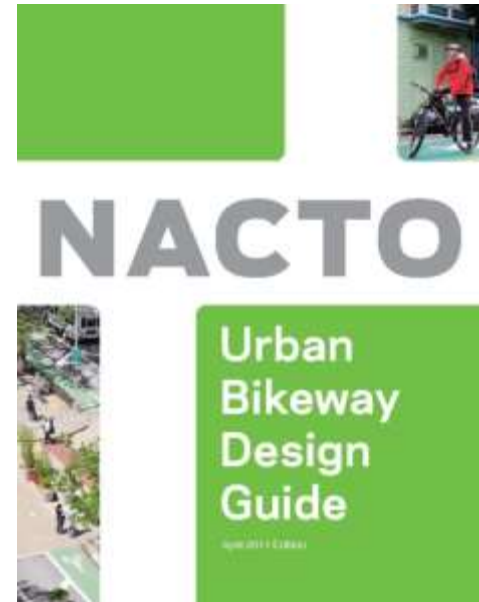
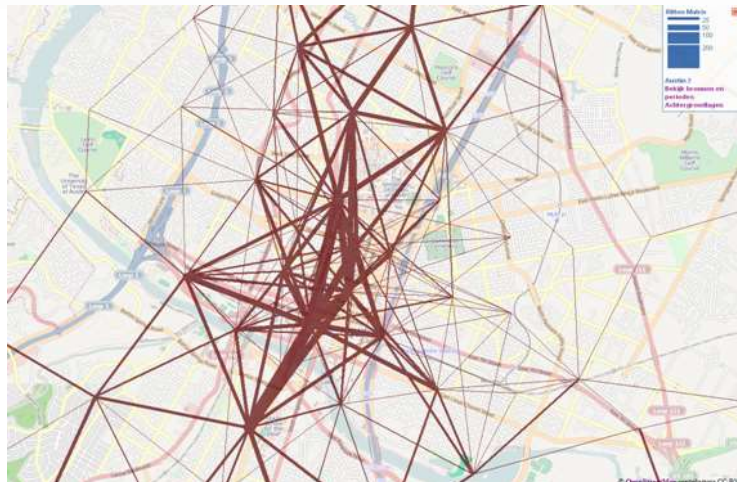
# New Directions in Bicycle Planning

Bicycle facility best practice has been rapidly evolving in the US with a focus on physically protected facilities, innovative treatments and short trip capture.

## Four Types of Transportation Cyclists in Portland By Proportion of Population



Short Trip Capture



# “Interested but Concerned”

## Four Types of Transportation Cyclists in Portland By Proportion of Population

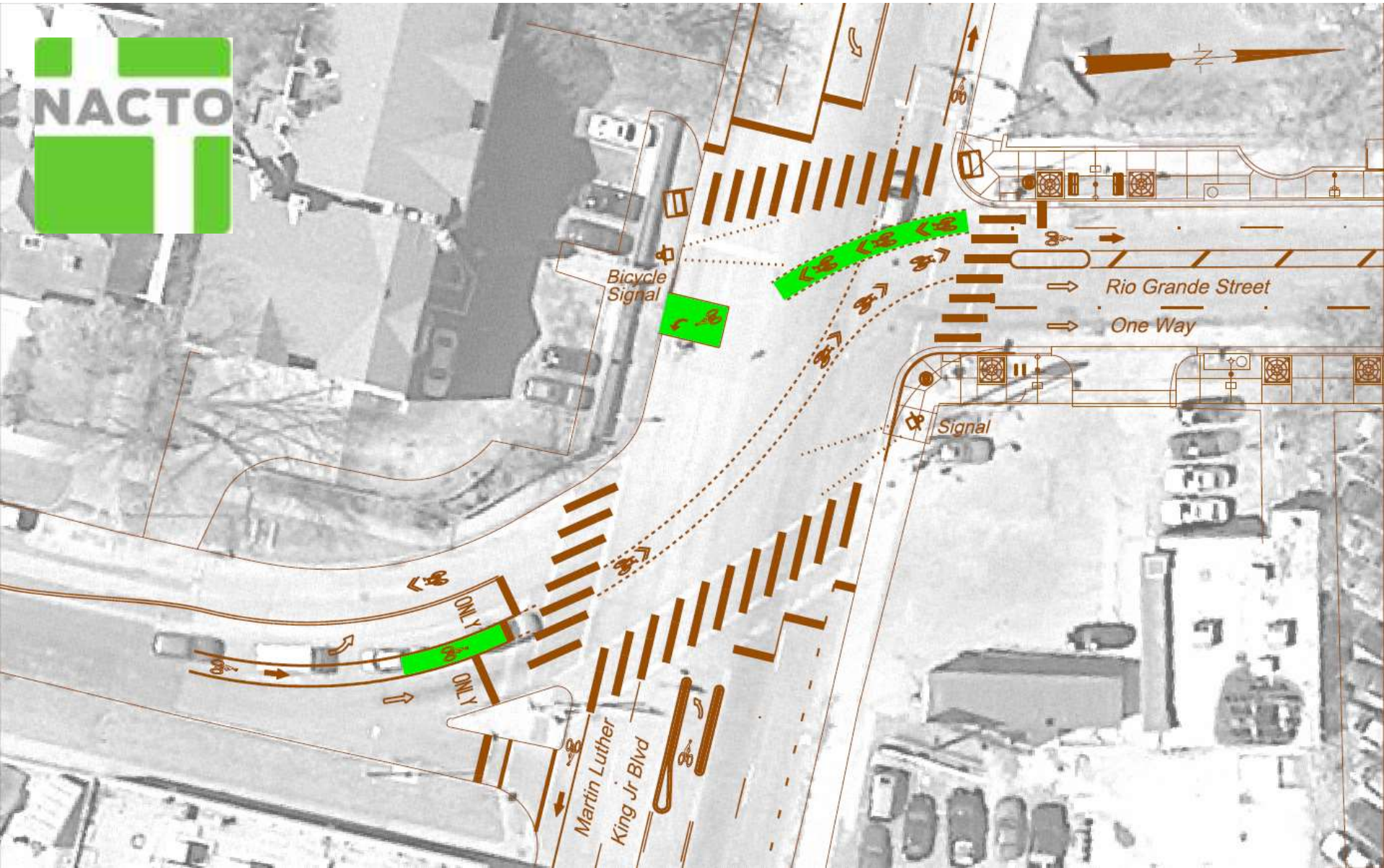


# Before the NACTO Guide

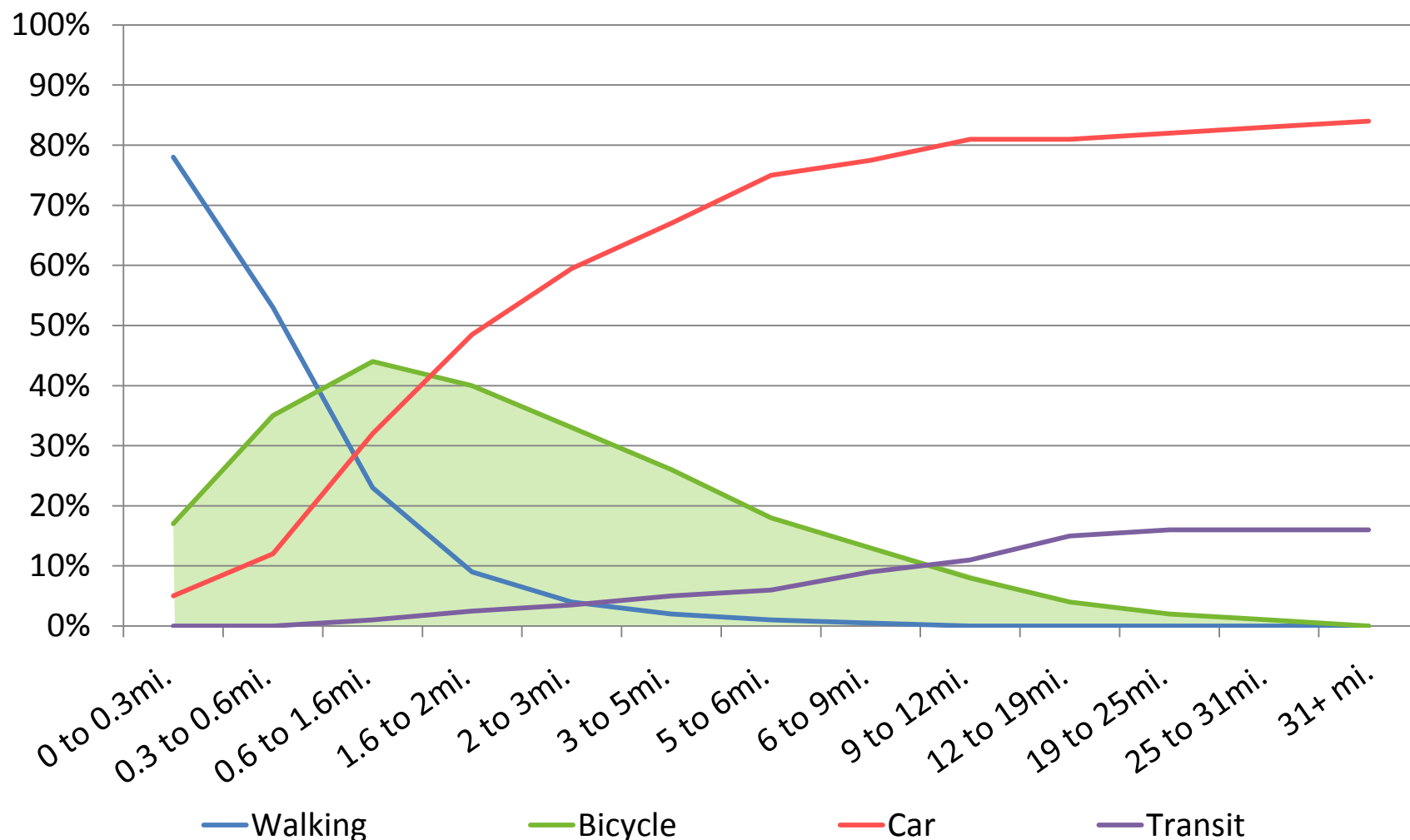


# With the NACTO Guide

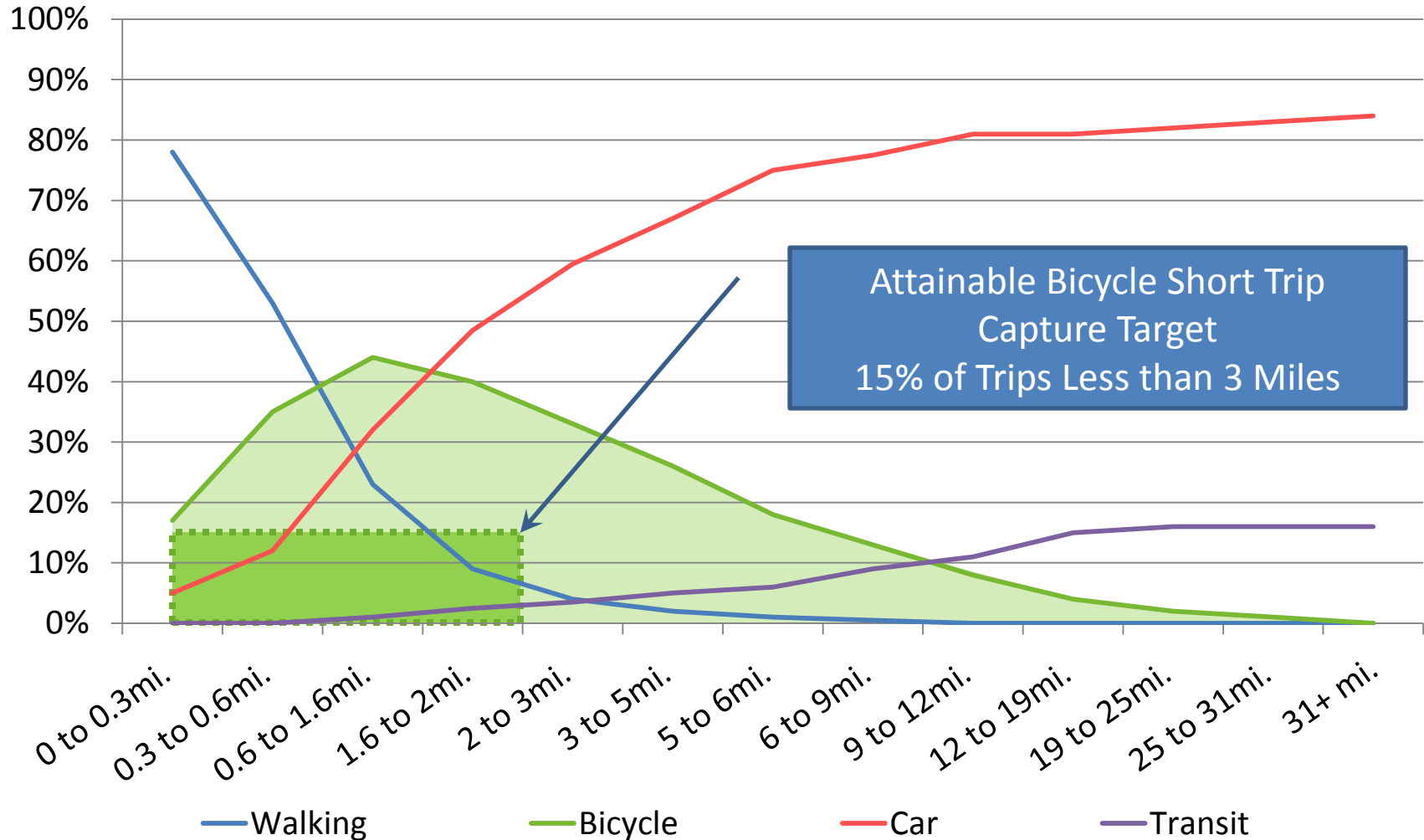
(City Council Endorsed)



# Dutch Modal Split According to Distances



# + Bicycle Short Trip Capture Target



# Spider Diagram of Short Car-Trips (0-3 mile)



# Short Term Network Criteria

## Short Term Network Criteria

- Short Trip Focus Area (Central City & TODs)
- Target Network Density
- Short Term Implementation Feasibility

### Legend

- Protected Bicycle Facilities
- Existing
- Near Term Planned
- Near Term Opportunities
- Long Term Opportunities



# Berkman Cycle Track



# Rio Grande Cycle Track



# Bluebonnet Cycle Track













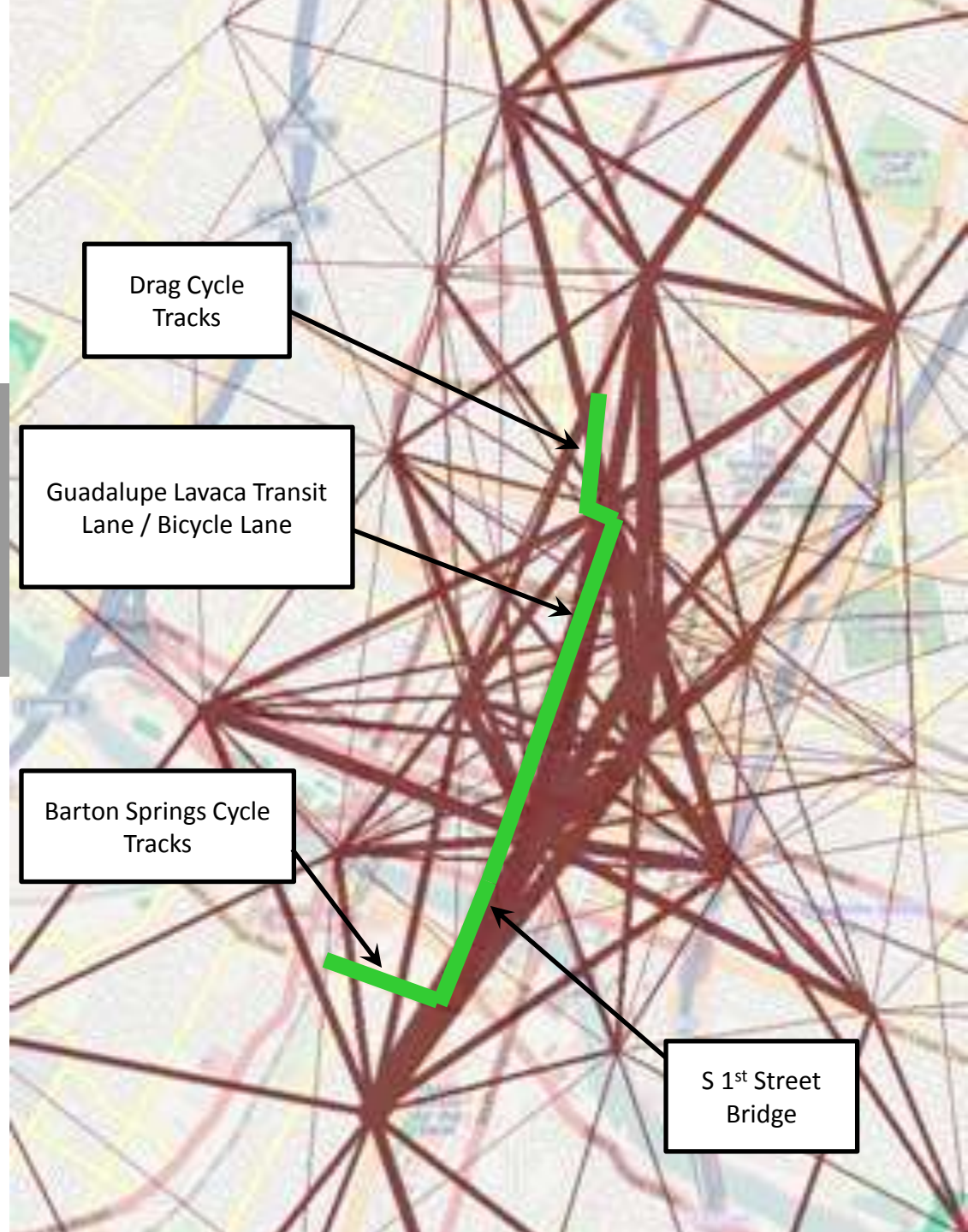
WATER OVER  
ROAD





# Guadalupe Lavaca Corridor

- The Guadalupe, Lavaca S1st Corridor will have significantly improved buffered and protected bicycle access in late 2013





NEWSLETTER SIGNUP

Email Address



[SUPPORT US](#) / [OUR WORK](#) / [EVENTS](#) / [RESOURCES](#) / [BLOG](#) / [ABOUT](#) / [SHOP](#) / [Q](#)

NEWS:

## BLUEPRINT

We've released our Blueprint for World-Class Bicycling, a guide to projects and principles that will transform our communities and create safe, streamlined streets and trails.