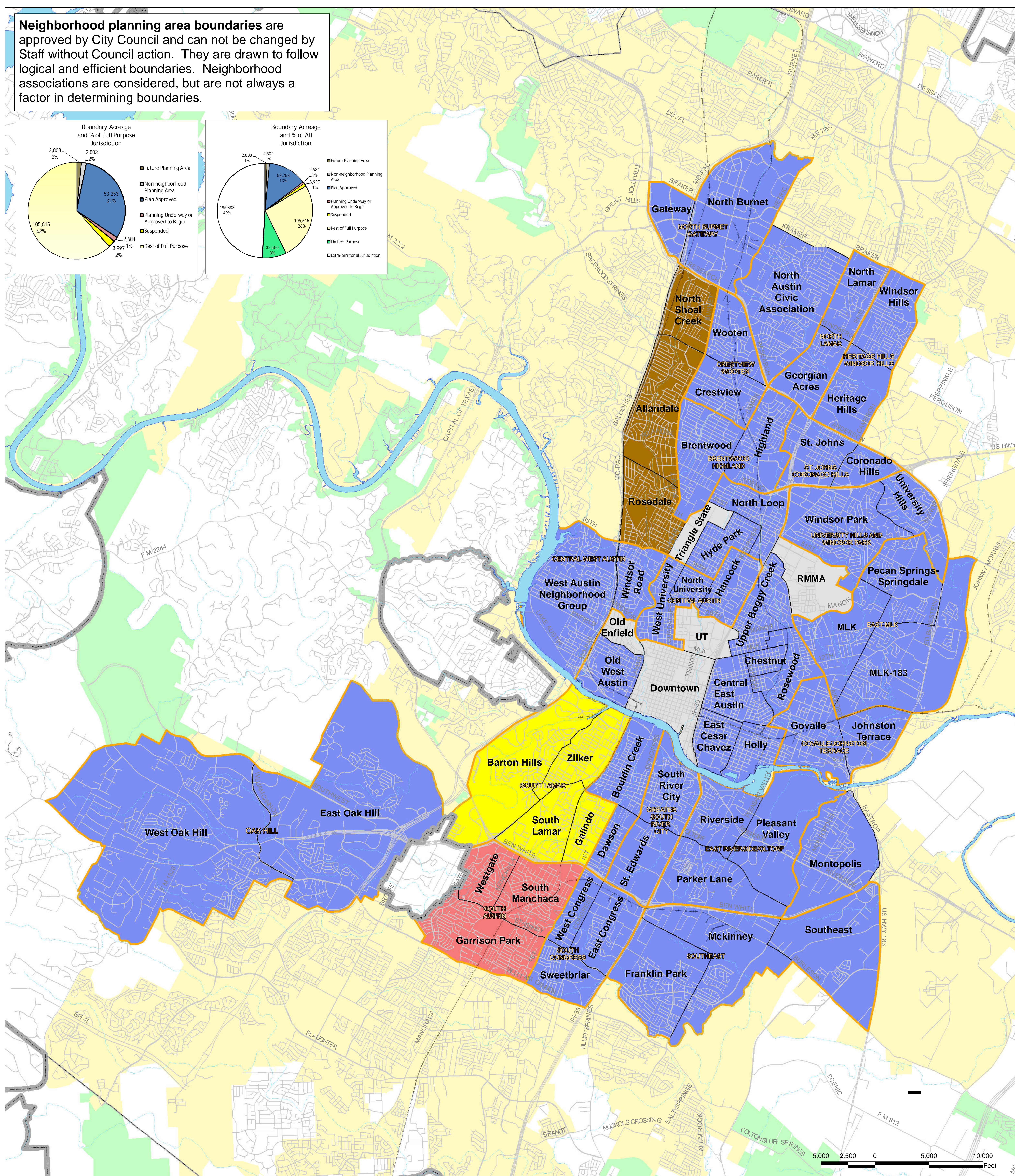
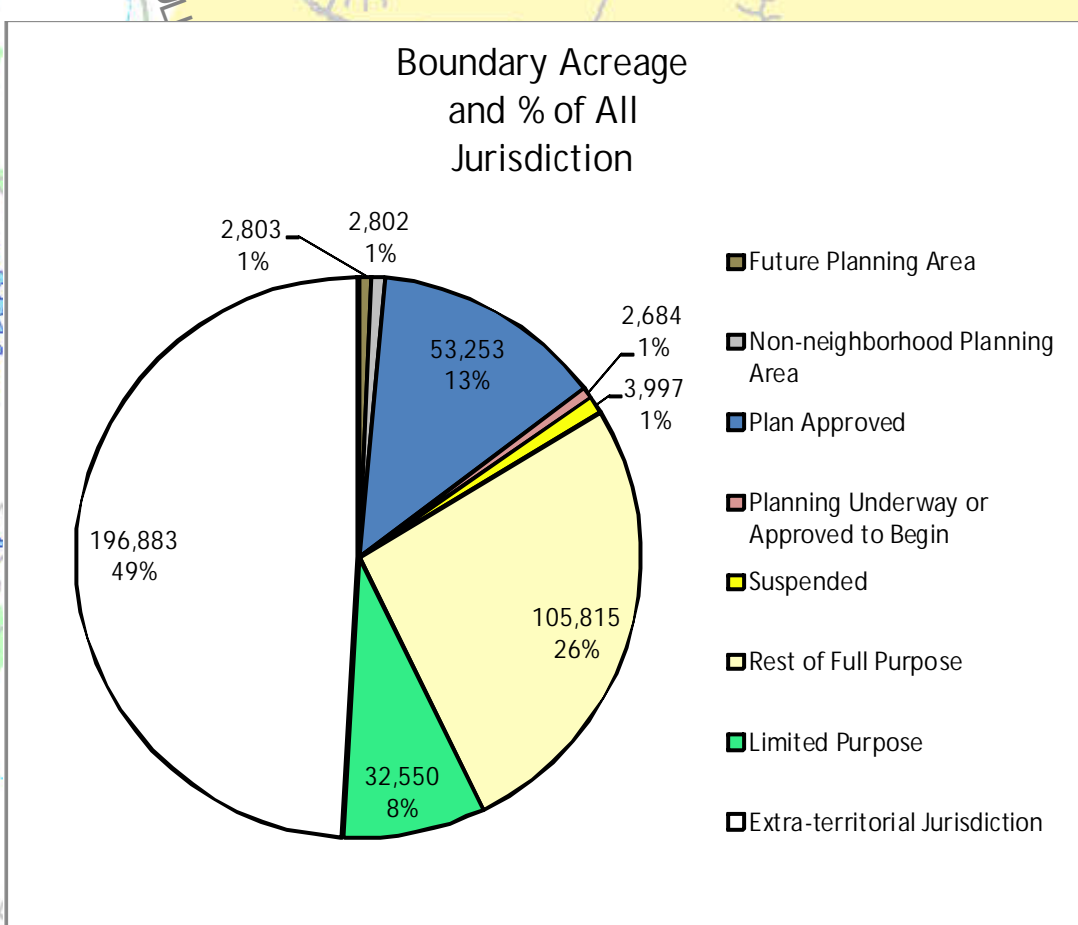



Boundary Acreage and % of Full Purpose Jurisdiction


Category	Percentage	Acreage
Future Planning Area	31%	53,263
Non-neighborhood Planning Area	2%	2,802
Plan Approved	2%	2,803
Planning Underway or Approved to Begin	1%	3,977
Suspended	2%	2,684
Rest of Full Purpose	62%	105,815




<http://www.austintexas.gov/departments/neighborhood-planning>



■	Plan Approved (n=50)
■	Planning Underway/Approved to Begin (3)
■	Suspended (4)
■	Future Planning Areas (3)
■	Non-neighborhood Planning Area (5)

 Combined Neighborhood Planning Areas

 Neighborhood Plan Boundary

This product is for informational purposes and may not have been prepared for or be suitable for legal, engineering, or surveying purposes. It does not represent an on-the-ground survey and represents only the approximate relative location of property boundaries.

This product has been produced by the Planning and Development Review Department for the sole purpose of geographic reference. No warranty is made by the City of Austin regarding specific accuracy or completeness.

```
filename: npstatus_tab
```