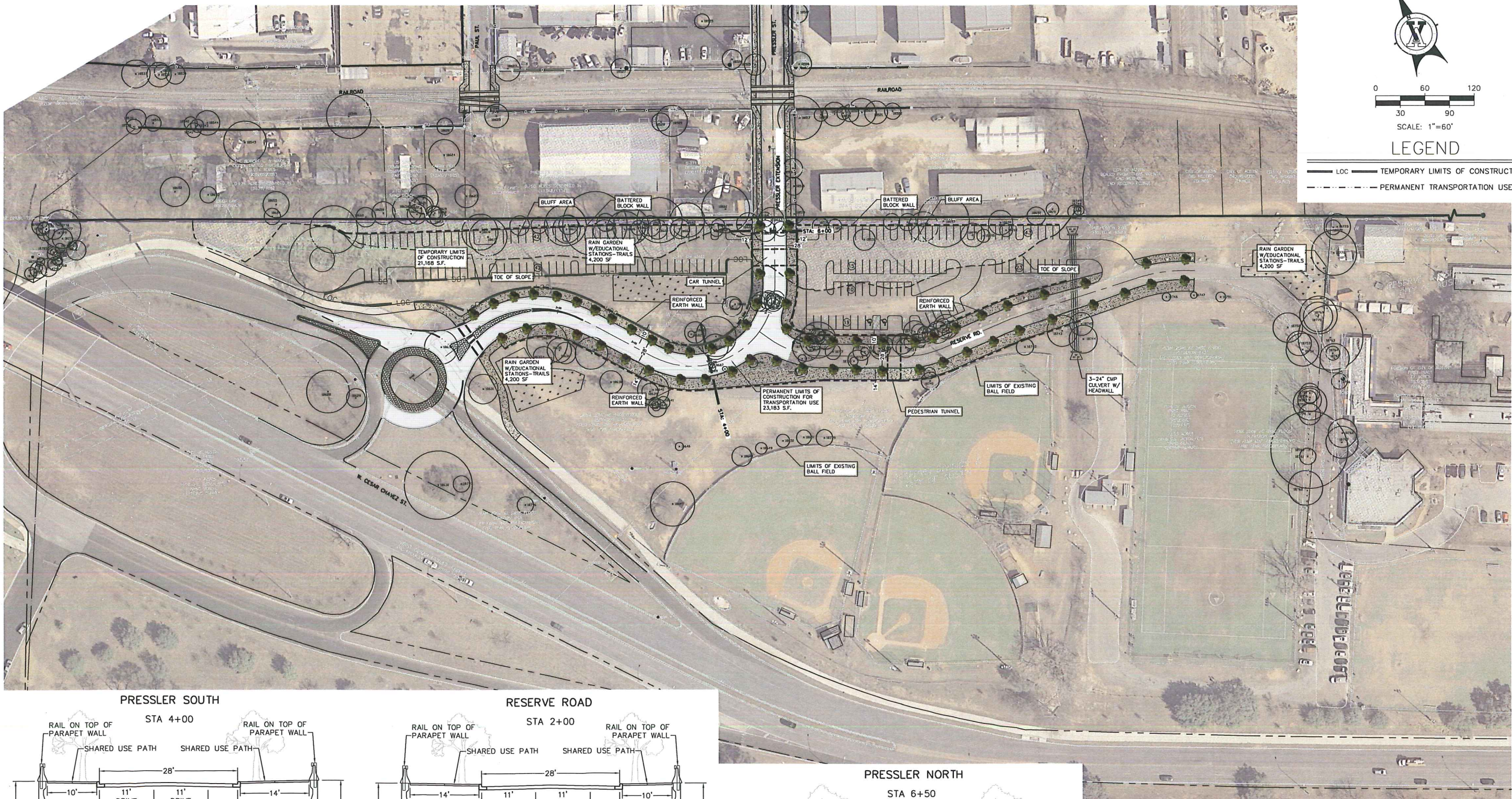


SCALE: 1"=60'

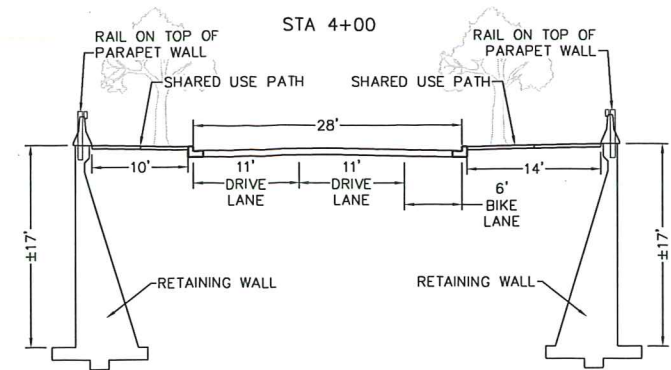
LEGEND

- LOC
- TEMPORARY LIMITS OF CONSTRUCTION
- PERMANENT LIMITS OF CONSTRUCTION FOR TRANSPORTATION USE



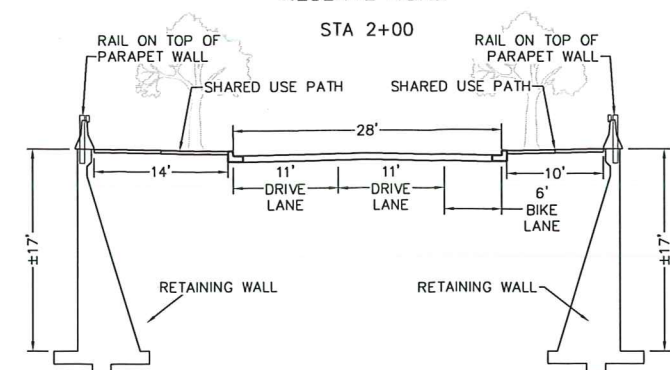
PRESSLER SOUTH

STA 4+00



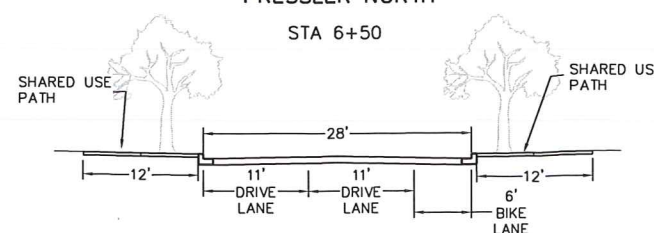
RESERVE ROAD

STA 2+00



PRESSLER NORTH

STA 6+50



OPTION 2

	AREA (S.F.)
TEMPORARY LIMITS OF CONSTRUCTION	21,168
PERMANENT LIMITS OF CONSTRUCTION FOR TRANSPORTATION USE	23,183

DESIGNER	DMG				
DRAFTER	DMG				
CHECKER	SGF				
APPROVED	SGF				
	NO.	DATE	REVISION	BY	APVD

VICKREY & ASSOCIATES, INC.
CONSULTING ENGINEERS
TEXAS BOARD OF PROFESSIONAL ENGINEERS REGISTRATION # F-0159
1717 West 6th Street, Suite 234
Austin, Texas 78703
Phone: (512) 494-8014 Fax: (512) 494-8054

VERIFY SCALES
BAR IS ONE INCH ON ORIGINAL DRAWING
0 1"
IF NOT ONE INCH ON THIS SHEET, ADJUST SCALES ACCORDINGLY.

OPTION 2
MOPAC IMPROVEMENTS/
PRESSLER ST. EXTENSION
CITY OF AUSTIN, TEXAS 78703
C.I.P. No. 9223.022

DRAWING	
PROJECT	2444-001
DATE	10/08/13
SHEET	OF 1

XX-XX-XXXX

Oct 08, 2013 - 4:02pm
W:\2444-001\Engineering\Drawings\2444-001.dwg - Overall 22x34