

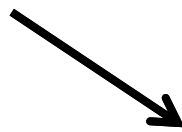
Drought Briefing

**Environmental Board
October 16, 2013**

**Daryl Slusher
Assistant Director, Environmental Affairs & Conservation
Austin Water**

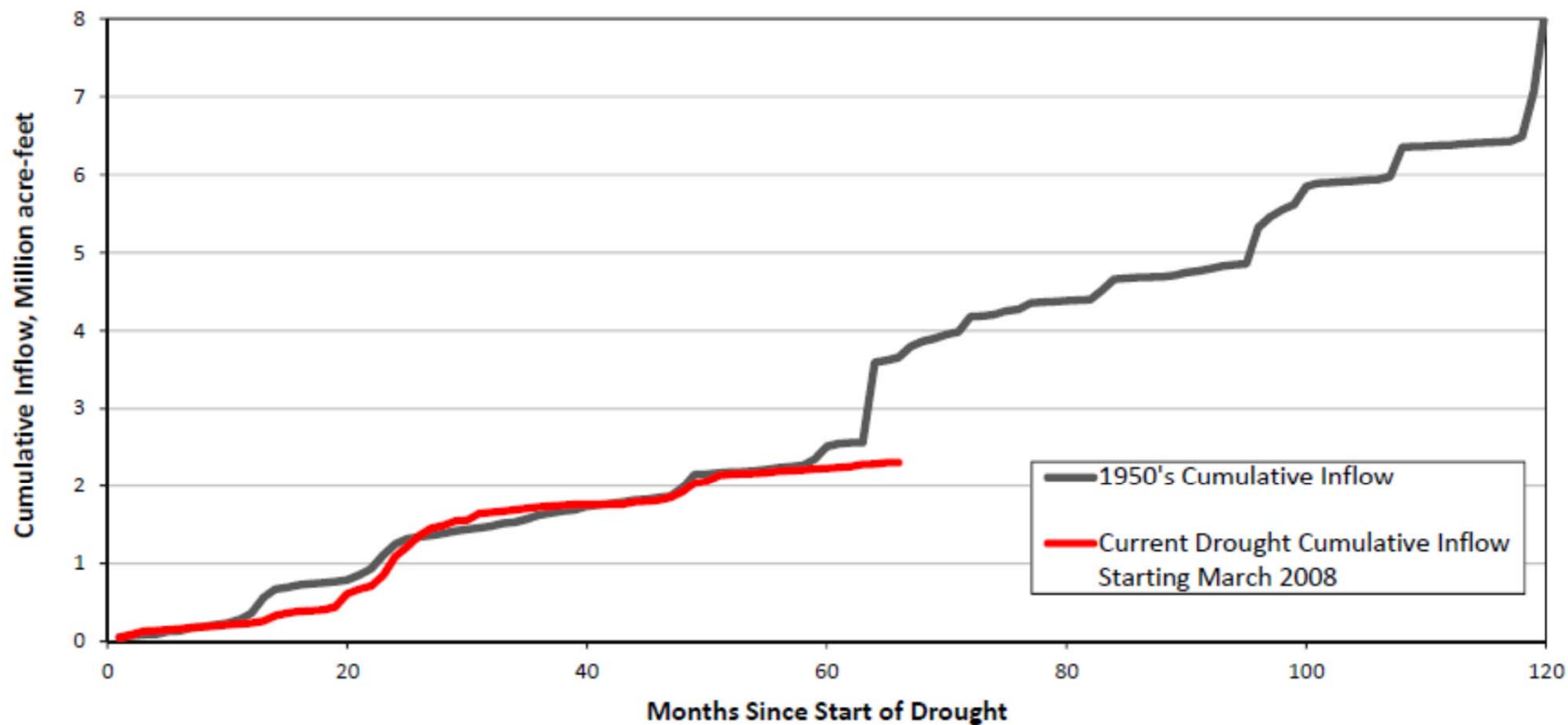
Water Supply Status

2013 likely to
be 2nd lowest
inflow year

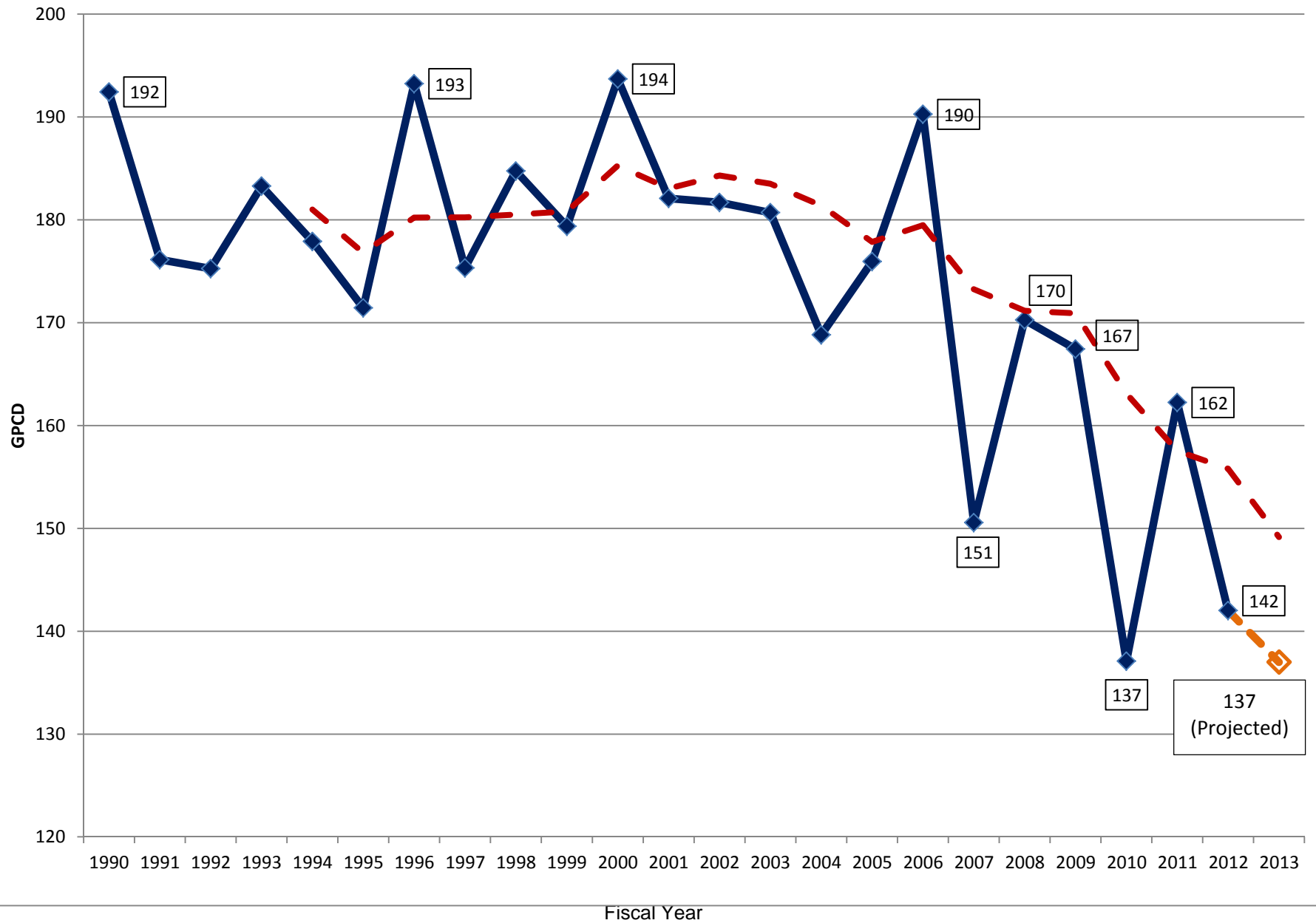


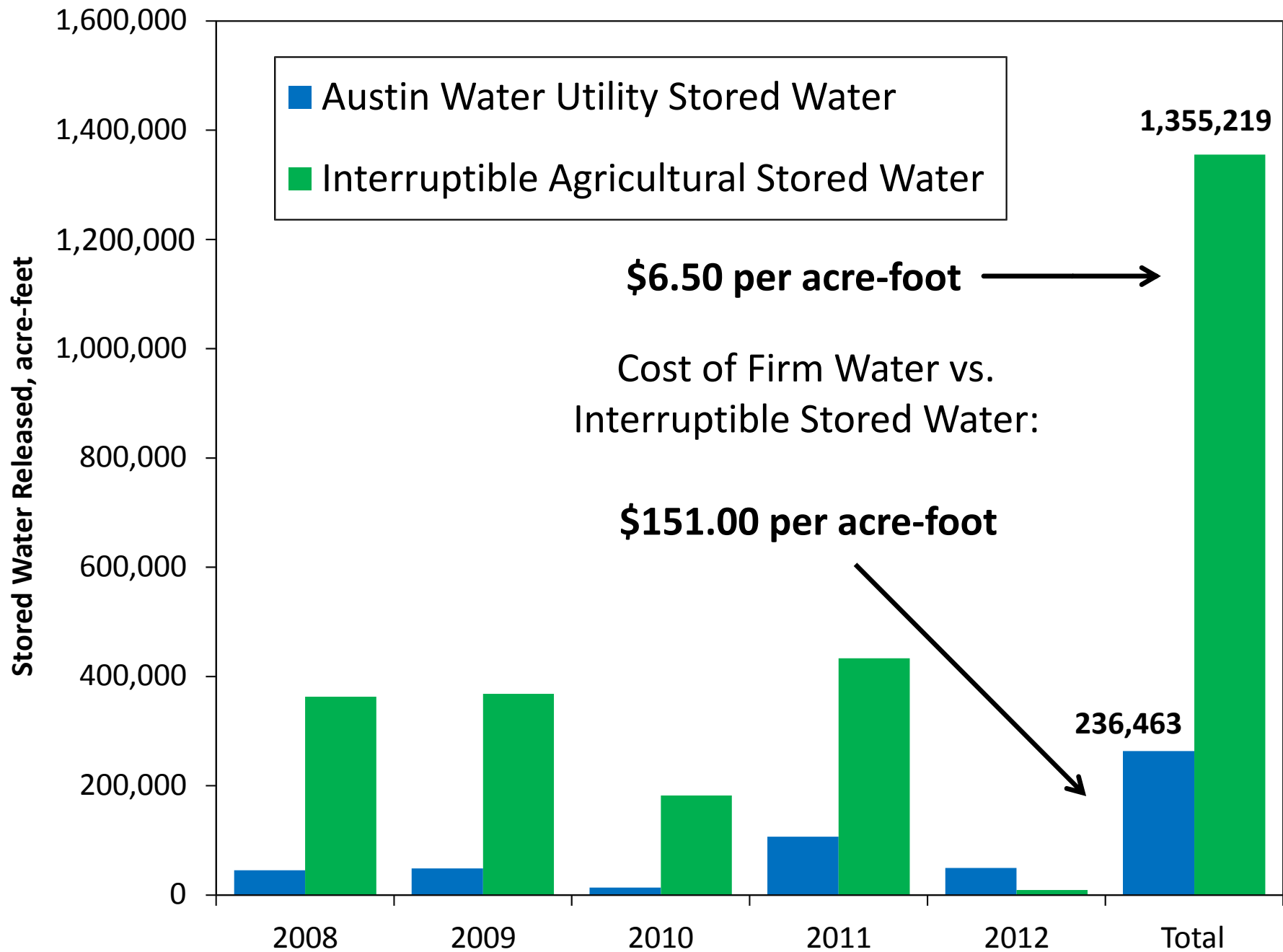
10 Lowest Annual Inflows on Record		
Rank	Year	Annual Total (in acre-feet)
1	2011	127,802
2	2008	284,462
3	2006	285,229
4	1963	392,589
5	2012	393,426
6	1983	433,312
7	1999	448,162
8	2009	499,732
9	1950	501,926
10	1967	503,572
Average	1942 – 2012	1,244,586

Cumulative Inflow to Lakes Buchanan and Travis



Austin Conservation History - GPCD Progress by Fiscal Year



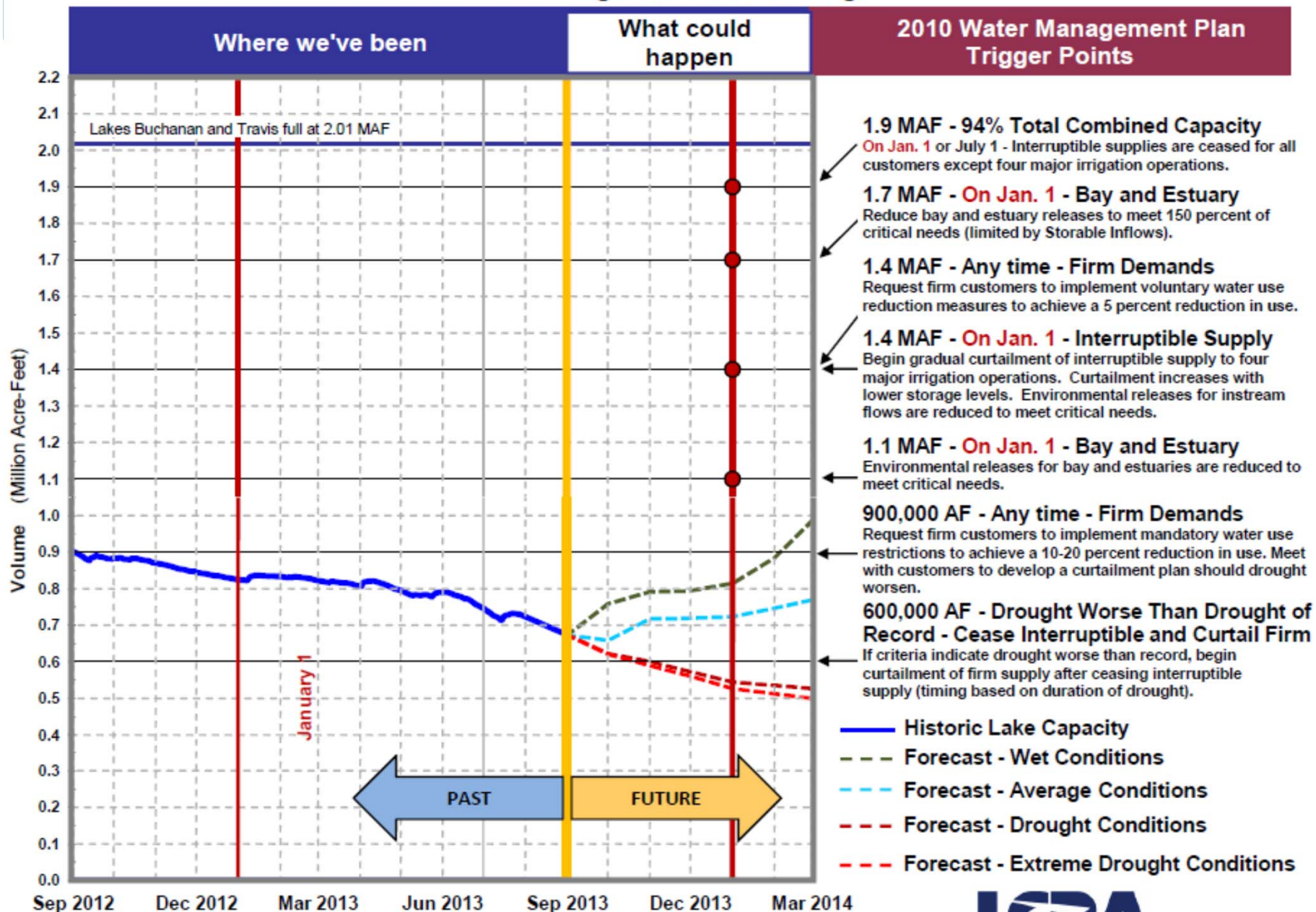




15 YEARS of stored water
released for
Austin Municipal:
428,841 acre-feet

1 YEAR of stored water
released for
Downstream Agriculture:
433,251 acre-feet

Highland Lakes Storage *



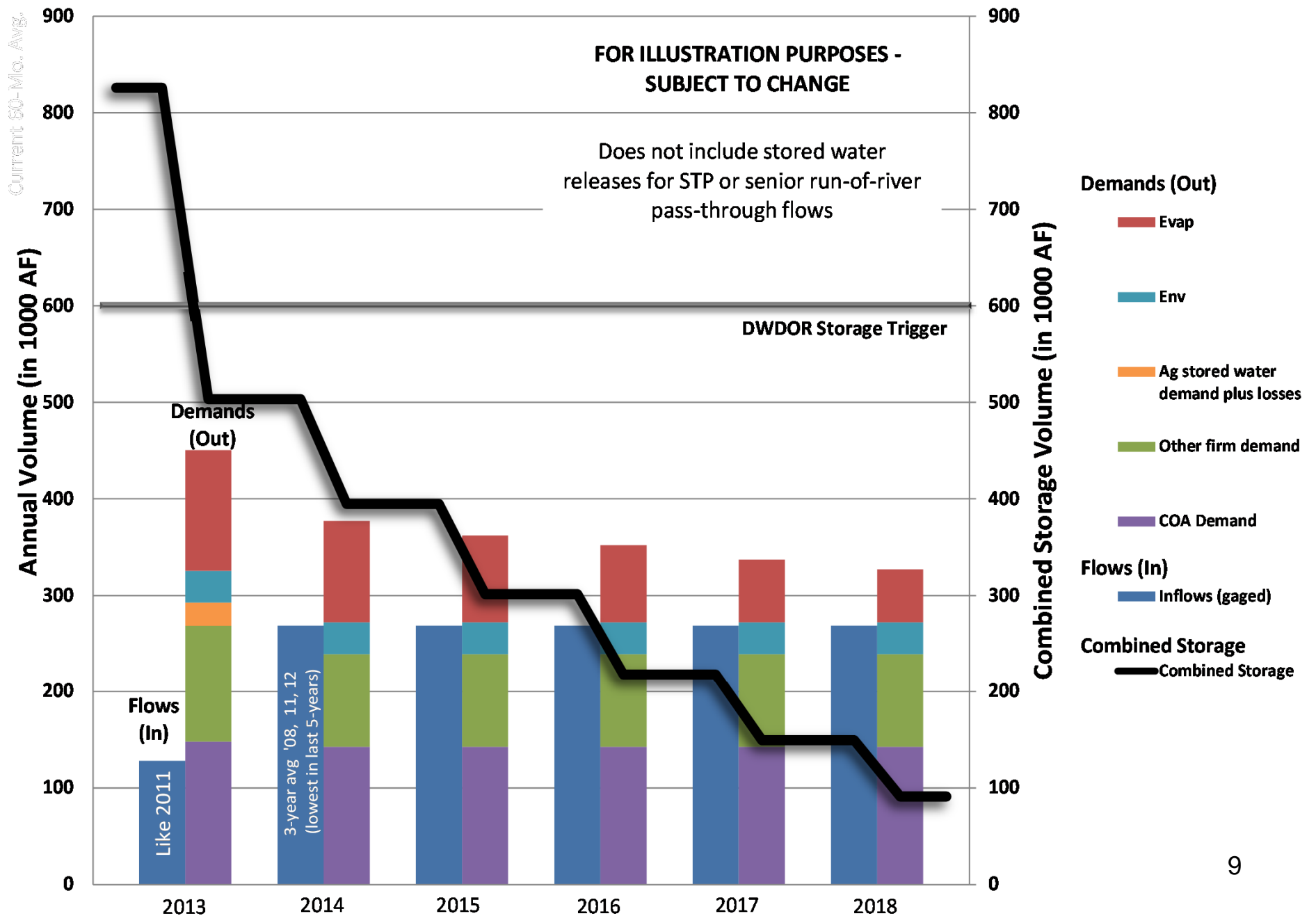
Note: MAF equals One Million Acre-Feet
One Acre-Foot (AF) equals 325,851 gallons.

Date: September 1, 2013

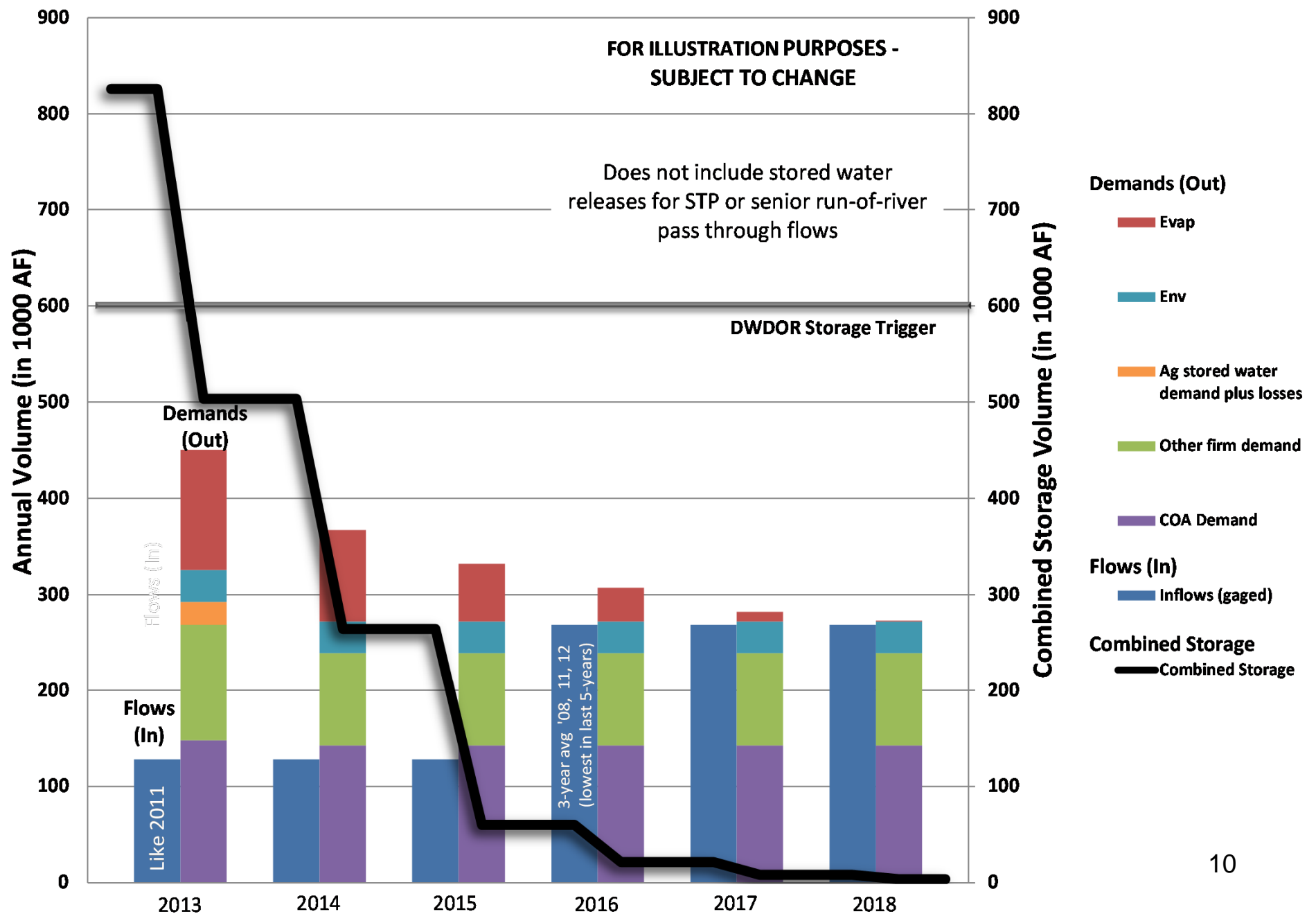
* Projections take into account emergency drought relief measures affirmed by TCEQ on February 13, 2013.



Combined Storage Extreme Drought Scenario 1



Combined Storage Extreme Drought Scenario 2



Drought Response Strategies

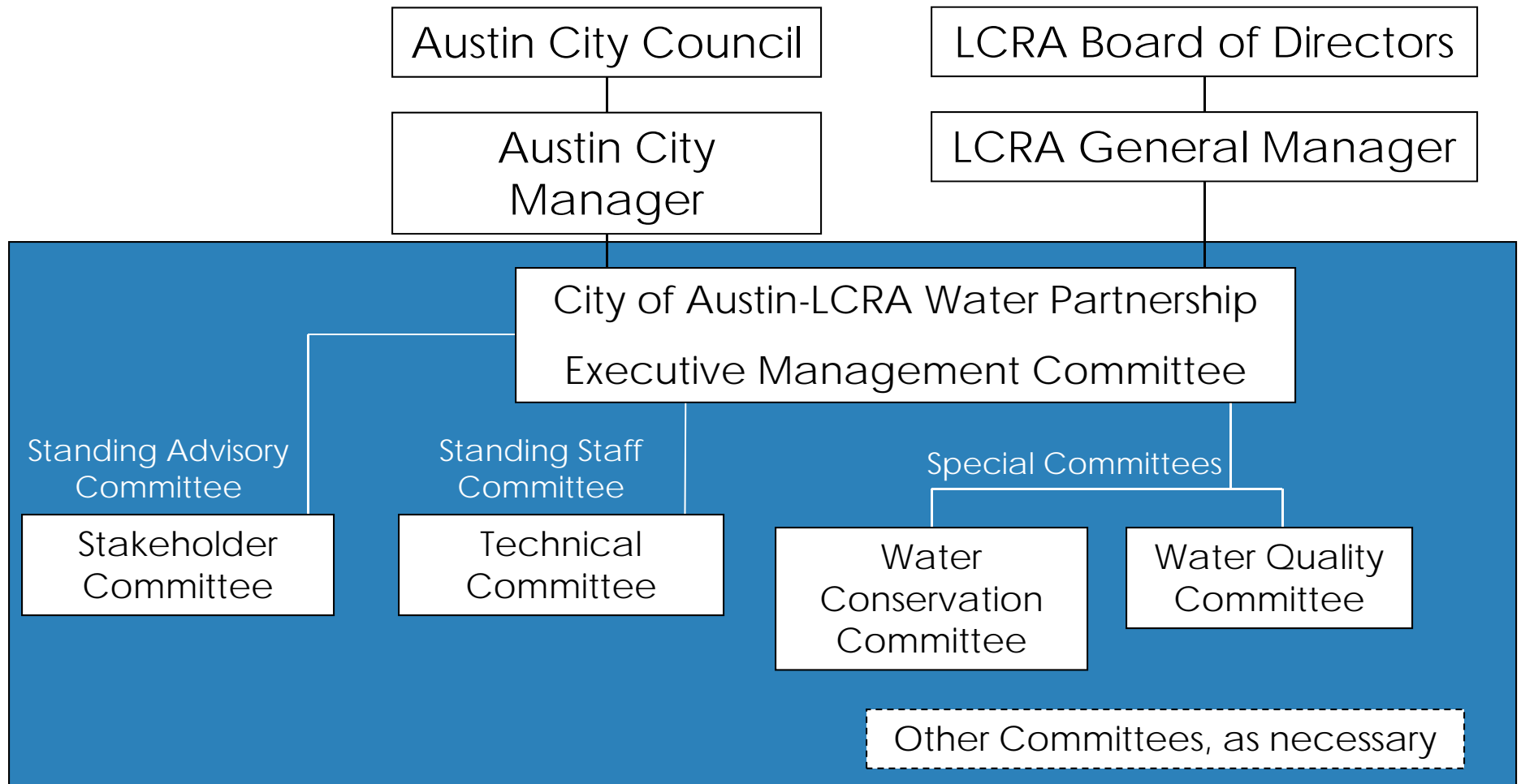
Drought Response

- Strategy 1: Austin Demand-Side Management
 - Required 20% Pro-rata curtailment at 600K acre/feet of combined storage
 - Austin already meets 20% goal but will implement Stage 3 restrictions when storage falls below 600K
 - AE has approved pro-rata curtailment plans for Decker Power Station and Fayette Power Project
 - Plan for additional water restrictions beyond Stage 3
 - Enhanced Stage 3 (example – only outdoor hand watering)
 - Stage 4 (No outdoor watering)

Drought Response

- Strategy 2: Protect Colorado River System Firm Water Interests
 - Emergency Orders to continue cut offs of interruptible (rice farming) water throughout the duration of the drought
 - Long term revisions to LCRA's Water Management Plan (WMP) to reduce firm water risks
 - Drought response is a key focus of COA/LCRA Water Partnership for 2012 and 2013

City of Austin and LCRA Water Partnership Organization



Drought Response

- Strategy 3: Investigate, evaluate and prioritize demands that can be met with alternative water sources:
 - Groundwater
 - Reclaimed water
 - Other sources

Drought Communication Plan

Marketing/Advertising

- Direct Mailer
- Austin Water Conservation Drought website
- Willie Nelson radio and TV ads
- Other advertising: Print, buses. . .
- Business & Restaurant outreach

Media Relations

- Meet with Media Managers
- Social Media

Public Involvement/Education

- Continue providing information about the drought and the move to Stage 3 through various community and business outlets
- City of Austin employee education: Drought and water conservation information to all employees. Emails to the workforce, City Source, internal departmental newsletters.

Conclusion

- Current drought is on a path to be worse than the 1950s drought of record
- Spring of 2014 key decision making point
 - Need for additional restrictions beyond Stage 3
 - Drought rate strategy
- Next Council Update – First Quarter 2014
 - Utility planning for regular Board & Commission updates

Questions?