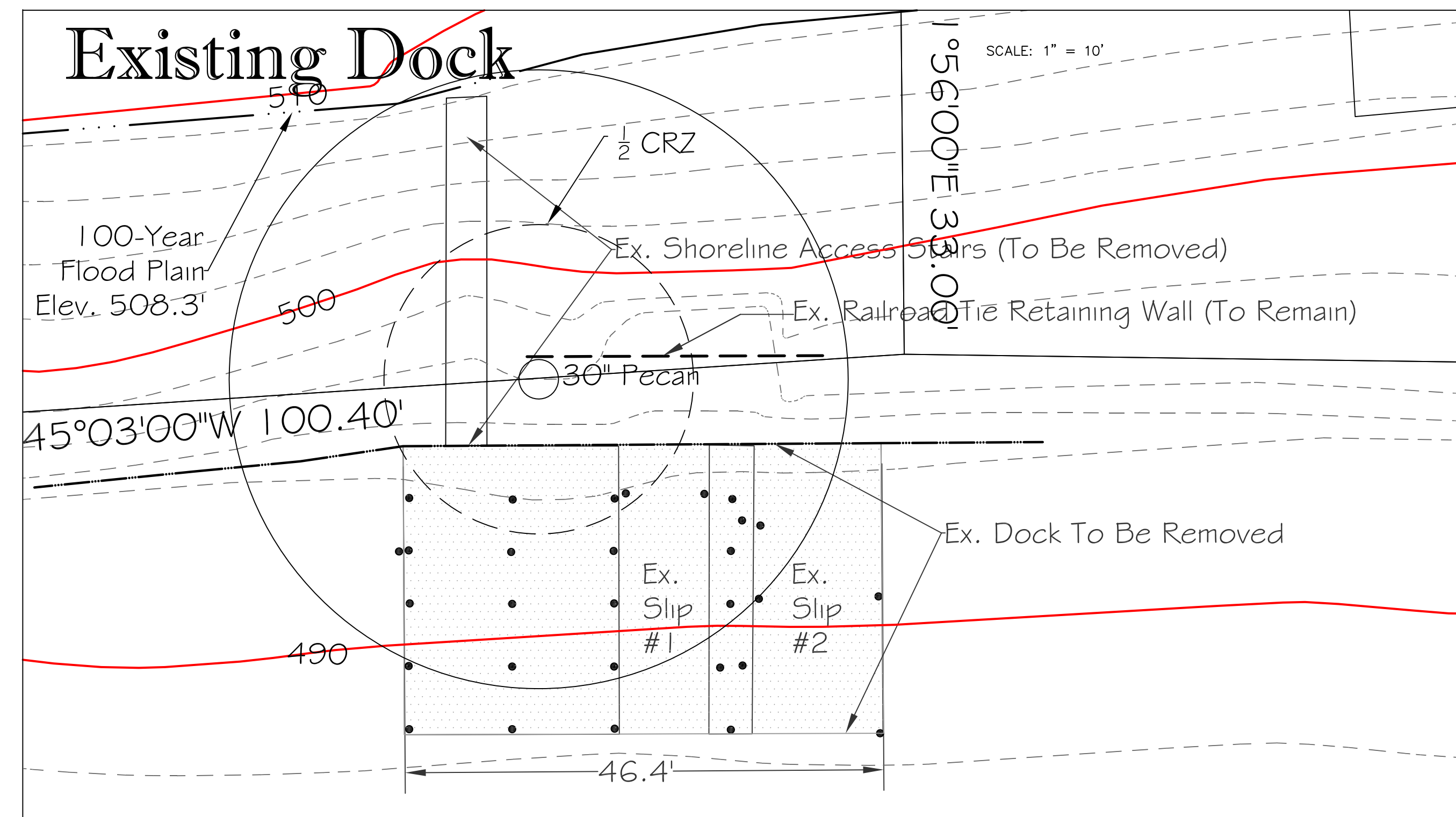
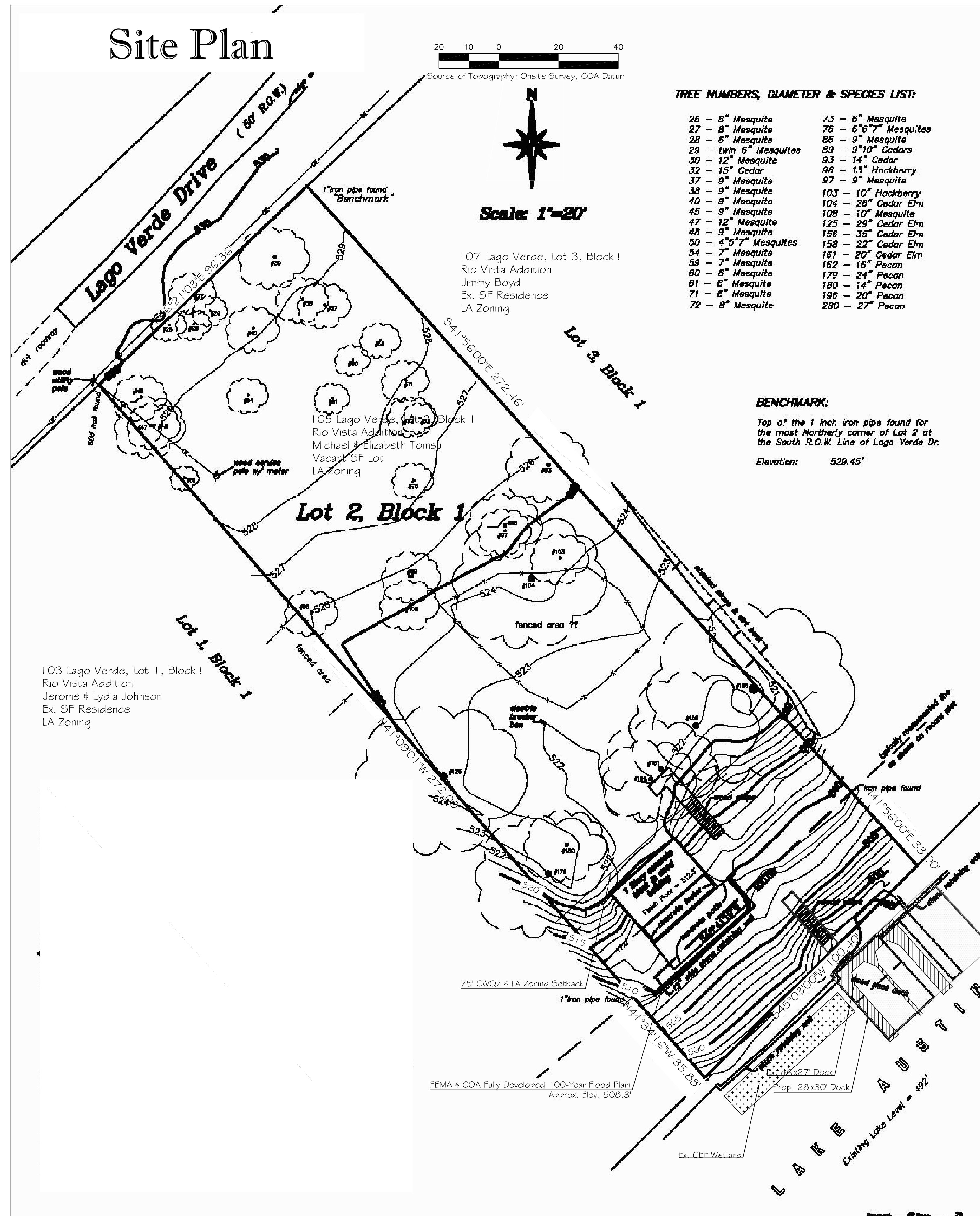


105 LAGO VERDE DRIVE

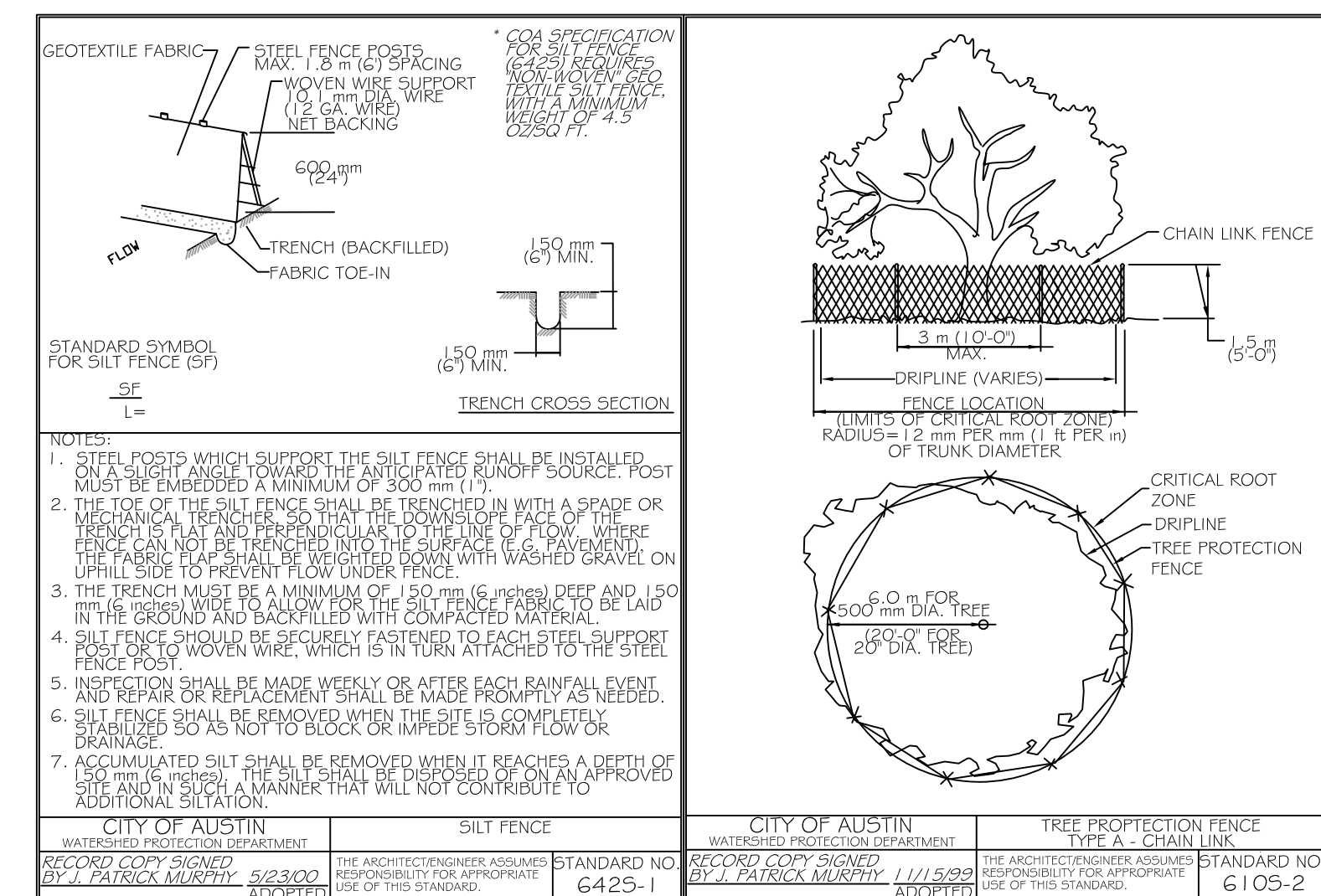
105 Lago Verde Road



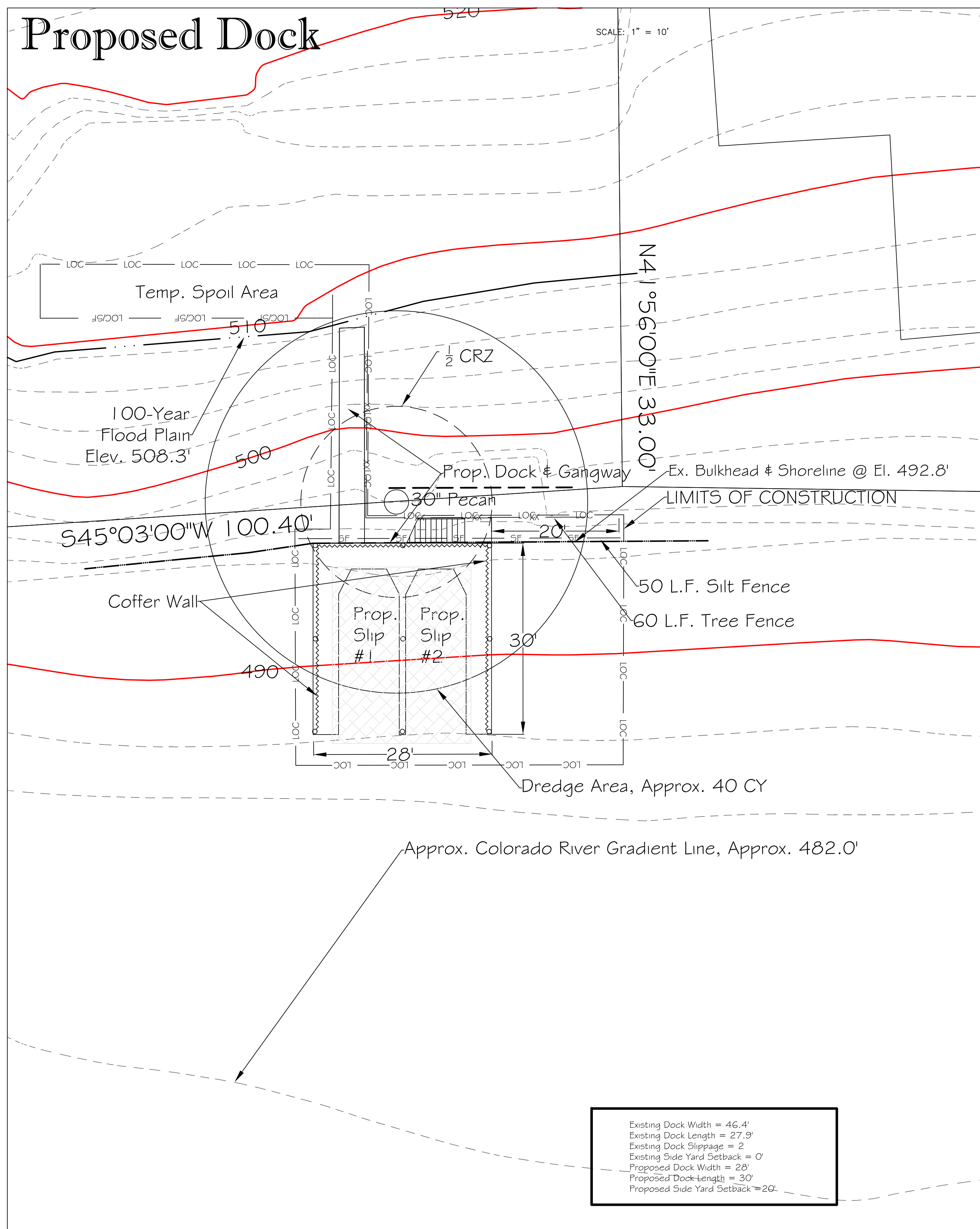
1. A DOCK MUST BE CONTINUOUSLY LIGHTED WITH AMBER LIGHTS BETWEEN SUNSET AND SUNRISE EACH DAY.
2. A DOCK MUST HAVE AT LEAST TWO LIGHT STATIONS. THE LIGHT STATION MUST BE LOCATED ON THE END OF THE DOCK AND ON THE SIDE THAT IS FARTHEST FROM AND PARALLEL TO THE SHORELINE. THE LIGHT MUST BE VISIBLE TO A PROPERLY APPROACHING WATERCRAFT.
3. NAVIGATION LIGHTS MUST HAVE A TWO-BULB FIXTURE, WITH TWO WORKING LIGHT BULBS RATED BETWEEN 7-1/2 AND 25 WATTS INCLUSIVE. LIGHT BULBS OR BULB COVERS MUST BE AMBER AND WHITE LIGHT MAY NOT RADIATE FROM THE FIXTURE. WEATHERPROOF LAMP HOLDERS AND JUNCTION BOXES ARE REQUIRED. EACH LIGHT FIXTURE MUST BE WIRED WITH A SWITCH OPERATED BY A PHOTOELECTRIC CELL SO THAT THE LIGHTS WILL OPERATE AUTOMATICALLY DURING THE HOURS THAT THE DOCK IS REQUIRED TO BE LIGHTED.
4. ALL WORK SHALL OCCUR WITHIN THE LIMITS OF CONSTRUCTION AS SHOWN ON THE PLAN, AND THAT NO MATERIALS OR EQUIPMENT WILL BE DELIVERED TO THE SITE FROM THE LANDWARD SIDE OF THIS PROJECT.
5. NO SHORELINE IMPROVEMENTS, EXCEPT GANGWAY & STAIR ACCESS OVER SHORELINE EDGE, ARE AUTHORIZED WITH THIS SITE PLAN. SHORELINE EDGE TO REMAIN UNDISTURBED.
6. NO TREES GREATER THAN 8" IN DIAMETER WILL BE IMPACTED BY THE PROPOSED DOCK CONSTRUCTION.
7. CONTAINERS OF HAZARDOUS MATERIALS, FUEL, OIL, HERBICIDES, INSECTICIDES, FERTILIZERS OR OTHER POLLUTANTS MAY NOT BE STORED ON DOCKS EXTENDING INTO OR ABOVE LAKE AUSTIN.
8. THE PROPOSED BOAT DOCK MUST COMPLY WITH ALL REQUIREMENTS OF LDC 25-2-1174 (STRUCTURAL REQUIREMENTS), AND MUST COMPLY WITH CHAPTER 25-12, ARTICLE 1 (UNIFORM BUILDING CODE) AND THE BUILDING CRITERIA MANUAL.
9. THE PROPOSED BOAT DOCK IS AN ACCESSORY USE TO THE PRINCIPAL SINGLE-FAMILY RESIDENCE AT 7605 NEWHALL LANE, AUSTIN TX, 78746.
10. PERMANENT IMPROVEMENTS ARE PROHIBITED WITHIN THE SHORELINE SETBACK AREA, EXCEPT FOR RETAINING WALLS, PIERS, WHARVES, BOATHOUSES, MARINAS OR A DRIVE TO ACCESS THE STRUCTURES (LDC 25-2-55 I (B)(2)).
11. DREDGING IS PROPOSED WITH THIS DEVELOPMENT, APPROXIMATELY 40 CY.
12. DREDGE MATERIAL WILL BE PERMANENTLY SPOILED AND STABILIZED ON SITE.
13. NO WATER AND WASTEWATER UTILITIES ARE PROPOSED WITH THIS DEVELOPMENT.

ATTENTION INSPECTOR NOTES:

1. COMPLIANCE WITH BUILDING CODE IS REQUIRED AND IS TO BE REVIEWED FOR COMPLIANCE DURING BUILDING CODE REVIEW.
2. FOR THE BUILDING PERMIT, A SIGNED AND SEALED LETTER SHALL BE SUBMITTED TO THE CITY OF AUSTIN, PER THE LAND DEVELOPMENT CODE, 25-12-2 .1612.4, CERTIFYING THAT THE STRUCTURE IS IN ACCORDANCE WITH THE AUSTIN BUILDING CODE, 2015 EDITION, CHAPTER 10, SECTION 10.05.01, 10.05.02, 10.05.03, 10.05.04, 10.05.05, 10.05.06, 10.05.07, 10.05.08, 10.05.09, 10.05.10, 10.05.11, 10.05.12, 10.05.13, 10.05.14, 10.05.15, 10.05.16, 10.05.17, 10.05.18, 10.05.19, 10.05.20, 10.05.21, 10.05.22, 10.05.23, 10.05.24, 10.05.25, 10.05.26, 10.05.27, 10.05.28, 10.05.29, 10.05.30, 10.05.31, 10.05.32, 10.05.33, 10.05.34, 10.05.35, 10.05.36, 10.05.37, 10.05.38, 10.05.39, 10.05.40, 10.05.41, 10.05.42, 10.05.43, 10.05.44, 10.05.45, 10.05.46, 10.05.47, 10.05.48, 10.05.49, 10.05.50, 10.05.51, 10.05.52, 10.05.53, 10.05.54, 10.05.55, 10.05.56, 10.05.57, 10.05.58, 10.05.59, 10.05.60, 10.05.61, 10.05.62, 10.05.63, 10.05.64, 10.05.65, 10.05.66, 10.05.67, 10.05.68, 10.05.69, 10.05.70, 10.05.71, 10.05.72, 10.05.73, 10.05.74, 10.05.75, 10.05.76, 10.05.77, 10.05.78, 10.05.79, 10.05.80, 10.05.81, 10.05.82, 10.05.83, 10.05.84, 10.05.85, 10.05.86, 10.05.87, 10.05.88, 10.05.89, 10.05.90, 10.05.91, 10.05.92, 10.05.93, 10.05.94, 10.05.95, 10.05.96, 10.05.97, 10.05.98, 10.05.99, 10.06.01, 10.06.02, 10.06.03, 10.06.04, 10.06.05, 10.06.06, 10.06.07, 10.06.08, 10.06.09, 10.06.10, 10.06.11, 10.06.12, 10.06.13, 10.06.14, 10.06.15, 10.06.16, 10.06.17, 10.06.18, 10.06.19, 10.06.20, 10.06.21, 10.06.22, 10.06.23, 10.06.24, 10.06.25, 10.06.26, 10.06.27, 10.06.28, 10.06.29, 10.06.30, 10.06.31, 10.06.32, 10.06.33, 10.06.34, 10.06.35, 10.06.36, 10.06.37, 10.06.38, 10.06.39, 10.06.40, 10.06.41, 10.06.42, 10.06.43, 10.06.44, 10.06.45, 10.06.46, 10.06.47, 10.06.48, 10.06.49, 10.06.50, 10.06.51, 10.06.52, 10.06.53, 10.06.54, 10.06.55, 10.06.56, 10.06.57, 10.06.58, 10.06.59, 10.06.60, 10.06.61, 10.06.62, 10.06.63, 10.06.64, 10.06.65, 10.06.66, 10.06.67, 10.06.68, 10.06.69, 10.06.70, 10.06.71, 10.06.72, 10.06.73, 10.06.74, 10.06.75, 10.06.76, 10.06.77, 10.06.78, 10.06.79, 10.06.80, 10.06.81, 10.06.82, 10.06.83, 10.06.84, 10.06.85, 10.06.86, 10.06.87, 10.06.88, 10.06.89, 10.06.90, 10.06.91, 10.06.92, 10.06.93, 10.06.94, 10.06.95, 10.06.96, 10.06.97, 10.06.98, 10.06.99, 10.07.01, 10.07.02, 10.07.03, 10.07.04, 10.07.05, 10.07.06, 10.07.07, 10.07.08, 10.07.09, 10.07.10, 10.07.11, 10.07.12, 10.07.13, 10.07.14, 10.07.15, 10.07.16, 10.07.17, 10.07.18, 10.07.19, 10.07.20, 10.07.21, 10.07.22, 10.07.23, 10.07.24, 10.07.25, 10.07.26, 10.07.27, 10.07.28, 10.07.29, 10.07.30, 10.07.31, 10.07.32, 10.07.33, 10.07.34, 10.07.35, 10.07.36, 10.07.37, 10.07.38, 10.07.39, 10.07.40, 10.07.41, 10.07.42, 10.07.43, 10.07.44, 10.07.45, 10.07.46, 10.07.47, 10.07.48, 10.07.49, 10.07.50, 10.07.51, 10.07.52, 10.07.53, 10.07.54, 10.07.55, 10.07.56, 10.07.57, 10.07.58, 10.07.59, 10.07.60, 10.07.61, 10.07.62, 10.07.63, 10.07.64, 10.07.65, 10.07.66, 10.07.67, 10.07.68, 10.07.69, 10.07.70, 10.07.71, 10.07.72, 10.07.73, 10.07.74, 10.07.75, 10.07.76, 10.07.77, 10.07.78, 10.07.79, 10.07.80, 10.07.81, 10.07.82, 10.07.83, 10.07.84, 10.07.85, 10.07.86, 10.07.87, 10.07.88, 10.07.89, 10.07.90, 10.07.91, 10.07.92, 10.07.93, 10.07.94, 10.07.95, 10.07.96, 10.07.97, 10.07.98, 10.07.99, 10.08.01, 10.08.02, 10.08.03, 10.08.04, 10.08.05, 10.08.06, 10.08.07, 10.08.08, 10.08.09, 10.08.10, 10.08.11, 10.08.12, 10.08.13, 10.08.14, 10.08.15, 10.08.16, 10.08.17, 10.08.18, 10.08.19, 10.08.20, 10.08.21, 10.08.22, 10.08.23, 10.08.24, 10.08.25, 10.08.26, 10.08.27, 10.08.28, 10.08.29, 10.08.30, 10.08.31, 10.08.32, 10.08.33, 10.08.34, 10.08.35, 10.08.36, 10.08.37, 10.08.38, 10.08.39, 10.08.40, 10.08.41, 10.08.42, 10.08.43, 10.08.44, 10.08.45, 10.08.46, 10.08.47, 10.08.48, 10.08.49, 10.08.50, 10.08.51, 10.08.52, 10.08.53, 10.08.54, 10.08.55, 10.08.56, 10.08.57, 10.08.58, 10.08.59, 10.08.60, 10.08.61, 10.08.62, 10.08.63, 10.08.64, 10.08.65, 10.08.66, 10.08.67, 10.08.68, 10.08.69, 10.08.70, 10.08.71, 10.08.72, 10.08.73, 10.08.74, 10.08.75, 10.08.76, 10.08.77, 10.08.78, 10.08.79, 10.08.80, 10.08.81, 10.08.82, 10.08.83, 10.08.84, 10.08.85, 10.08.86, 10.08.87, 10.08.88, 10.08.89, 10.08.90, 10.08.91, 10.08.92, 10.08.93, 10.08.94, 10.08.95, 10.08.96, 10.08.97, 10.08.98, 10.08.99, 10.09.01,



105 Lago Verde Road



Dock Plan & Elevations

