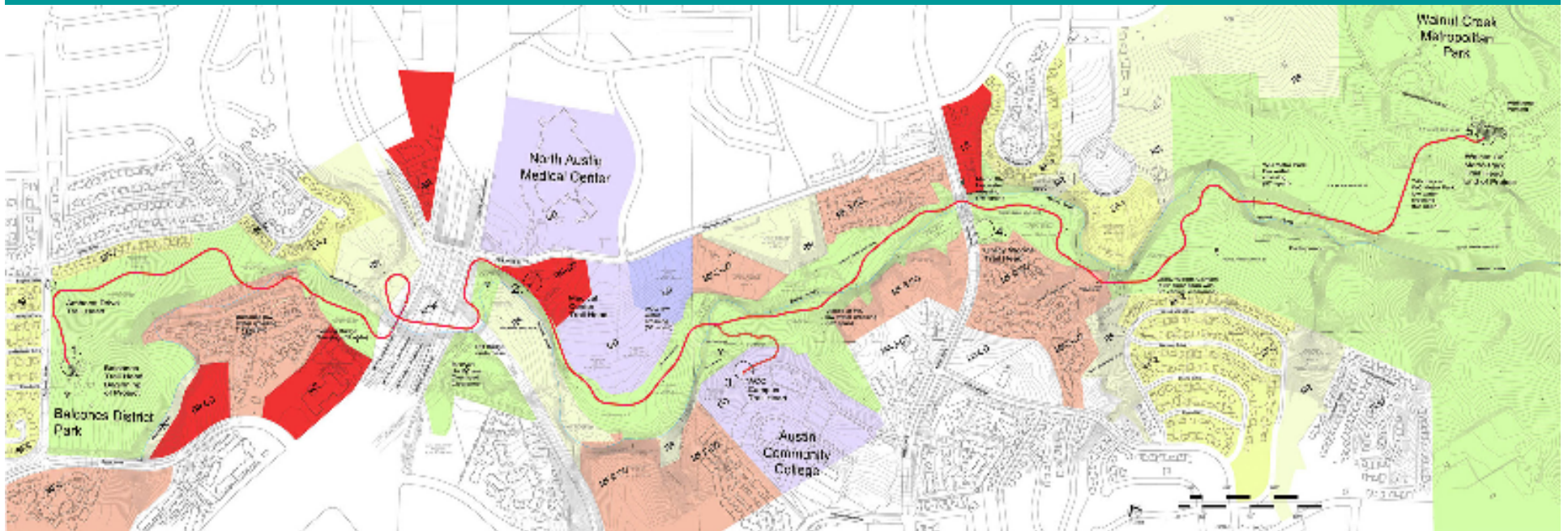


Walnut Creek Trail System

- **Trail projects:**
 - N. Walnut Phase I (3.2 miles) – \$5,600,000
 - Construction May 2013
 - N. Walnut Phase II (1.7 miles) - \$3,000,000
 - Grant for construction approved
 - Preliminary Design underway.
 - Southern Walnut (7.3 miles) - \$8,100,000
 - Construction March 2012
 - Total (12.25 miles) – \$16,100,000

Phase I Trail Alignment



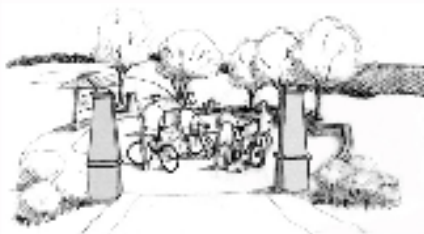
Length 3.2 Miles

Major Trail Head Plan Layout

TRAILHEAD DESIGN CHECKLIST

Trailheads should address:

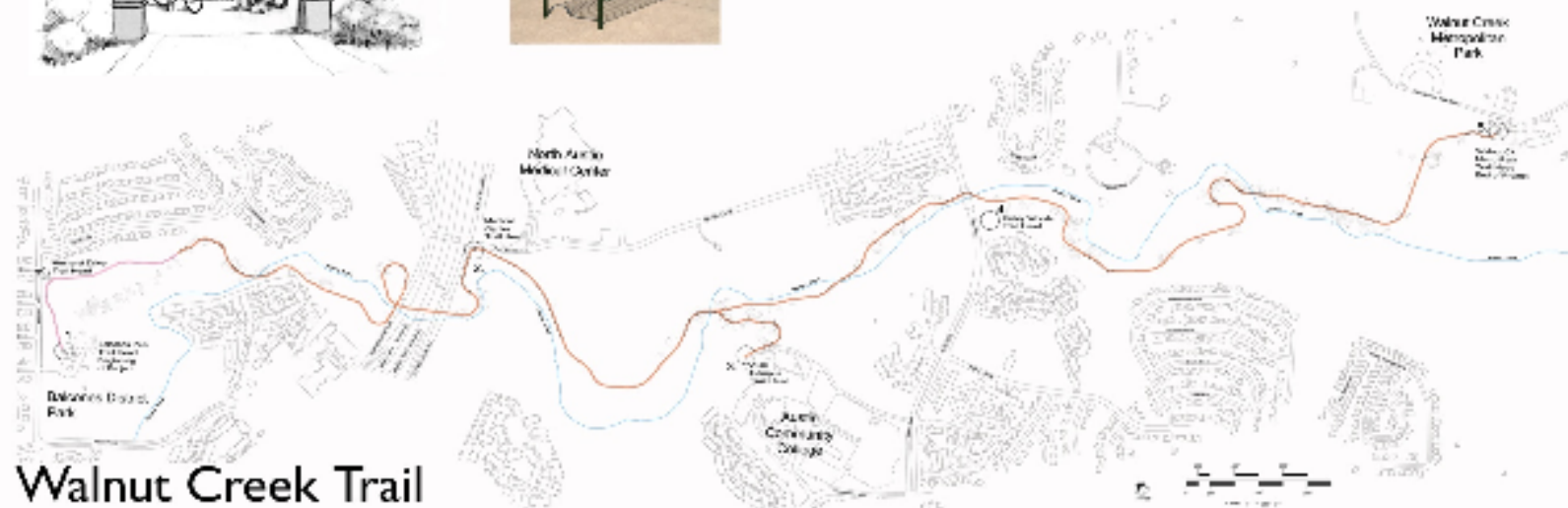
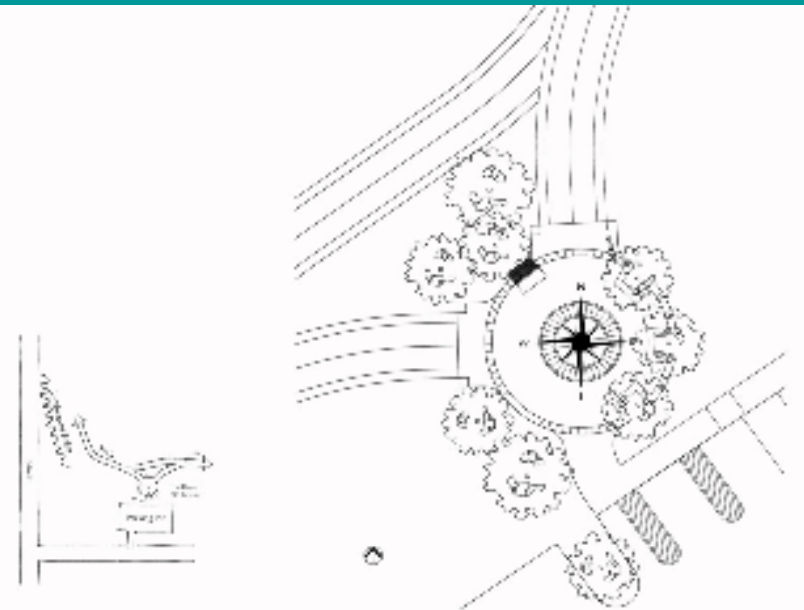
- Connection Node**
 - location adjacent to transit, transit stop, public transit, or other public transit
 - location adjacent to public transit
 - location adjacent to public transit
 - location adjacent to public transit
 - location adjacent to public transit
- Information Source**
 - location adjacent to public transit
 - location adjacent to public transit
 - location adjacent to public transit
 - location adjacent to public transit
 - location adjacent to public transit
- Information Source**
 - location adjacent to public transit
 - location adjacent to public transit
 - location adjacent to public transit
 - location adjacent to public transit
 - location adjacent to public transit



TRAILHEAD DESIGN CONCEPT

Design elements supporting the checklist are as follows:

- Connection Node**
 - location adjacent to transit, transit stop, public transit, or other public transit
 - location adjacent to public transit
 - location adjacent to public transit
 - location adjacent to public transit
 - location adjacent to public transit
- Information Source**
 - location adjacent to public transit
 - location adjacent to public transit
 - location adjacent to public transit
 - location adjacent to public transit
 - location adjacent to public transit
- Information Source**
 - location adjacent to public transit
 - location adjacent to public transit
 - location adjacent to public transit
 - location adjacent to public transit
 - location adjacent to public transit



Walnut Creek Trail

TRAILHEAD

Trailhead Design Concept

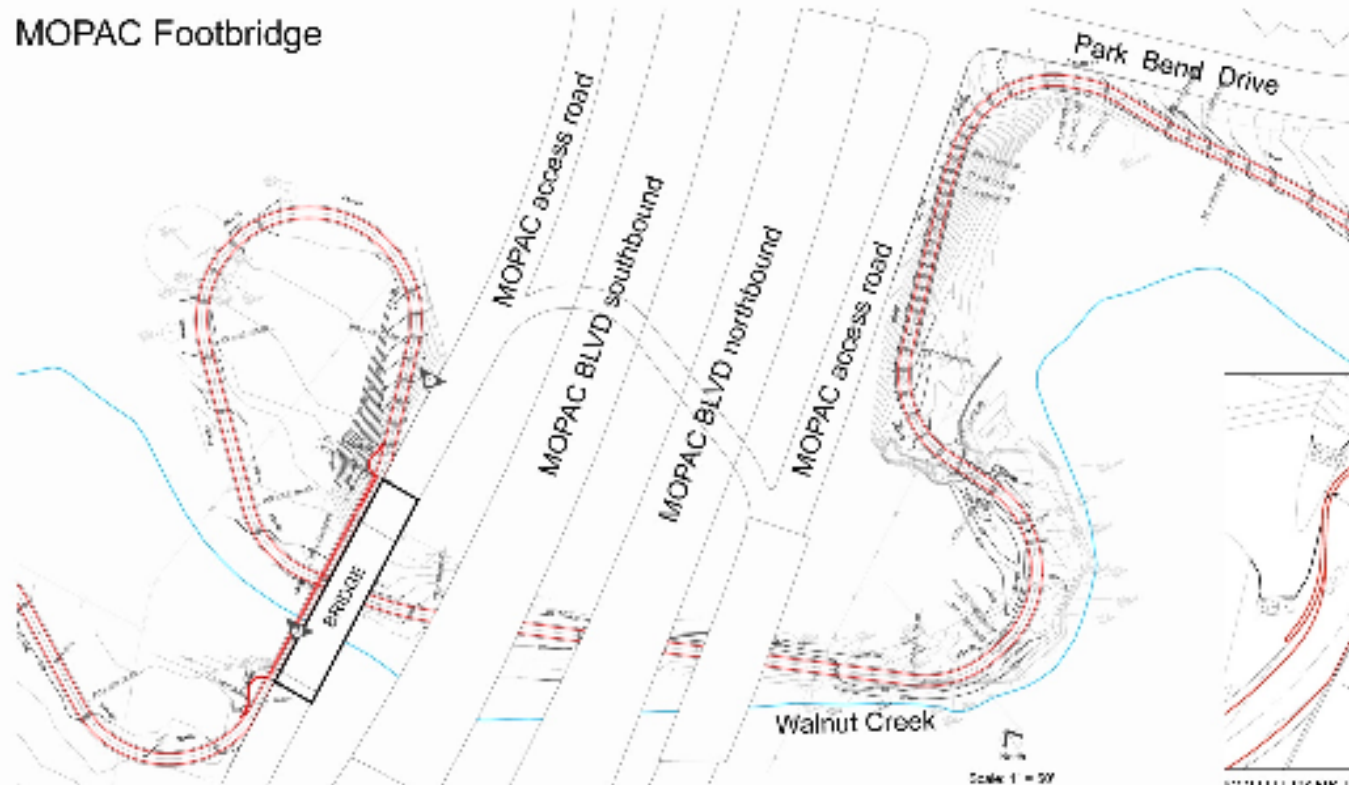


Walnut Creek Trail

August 20, 2004

Landscape Architecture
Planning
Urban Design
**LEWIS
BURNS
SMITH**
1108 West Avenue
Austin, Texas 78701
512.476.1558

MOPAC Footbridge



PROPOSED TRAIL ALIGNMENT

① North Bank Before



① North Bank After



② South Bank Before



② South Bank After



Notes: Areas of the existing creek bed are shown in blue. The proposed trail alignment is shown in red. The proposed trail alignment is shown in red. The proposed trail alignment is shown in red.

The proposed trail alignment is shown in red. The proposed trail alignment is shown in red. The proposed trail alignment is shown in red.

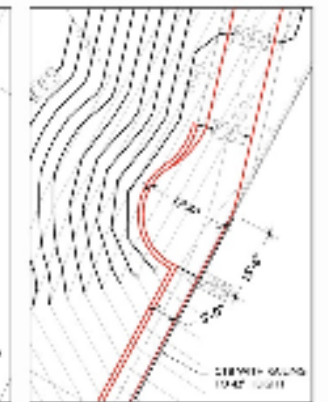
The proposed trail alignment is shown in red. The proposed trail alignment is shown in red. The proposed trail alignment is shown in red.

The proposed trail alignment is shown in red. The proposed trail alignment is shown in red. The proposed trail alignment is shown in red.

The proposed trail alignment is shown in red. The proposed trail alignment is shown in red. The proposed trail alignment is shown in red.



SOUTH BANK DISMOUNT AREA DETAIL



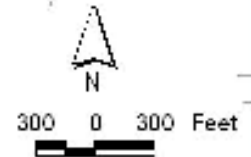
NORTH BANK DISMOUNT AREA DETAIL

Walnut Creek Trail

January 10, 2018

San Antonio Community College
Planning Office
1000 N. Loop West
San Antonio, TX 78207
(214) 748-1111

Walnut Creek Trail Phase II



Phase I Trail

Big Walnut Creek
Metro Park

Phase II Trail

TCEQ
Headquarters

Girl Scout
Headquarters

LEGEND

- Trail Heads
- Creeks
- City Parkland
- Legal Lots
- Trail Easement
- Walnut Creek Trail Phase II
- Bridges
- MF - Multi-Family

MF

MF

Summary

N. Walnut Phase I (3.2 miles)

\$5,000,000

- N. Walnut Phase II (1.7 miles)

\$3,000,000

- Southern Walnut (7.3 miles)

\$8,100,000

- **Total (12.25 miles) – \$13,100,000**