



Organized 1973

*"To preserve our
neighborhood
and protect it from
deterioration."*

OFFICERS

Catherine Kyle
President

August Harris
Past President

Michael Cannatti
Secretary

George Edwards
Treasurer

BOARD MEMBERS

Mary Arnold
Joyce Basciano
Joseph Bennett
Erik Cary
Gwen Jewiss
Haidar Khazan
Blake Tollett

WEST AUSTIN NEIGHBORHOOD GROUP

October 27, 2013

Magdalena Blanco (Chairwoman)
Independent Citizens Redistricting Commission (ICRC)
c/o Craig Tounget, Executive Director
811 Barton Springs Rd #425
Austin, Texas 78704
E-mail: icrc-craig.tounget@austintexas.gov

Re: Public Input and Map Proposal from West Austin Neighborhood Group

Dear Commissioners:

On behalf of the West Austin Neighborhood Group (WANG), I am writing to provide input concerning the Official Preliminary Map dated September 28, 2013.

Concerns About District 7: With all due respect for the work performed by the ICRC, we were concerned and dismayed to see our neighborhood included in District 7 which appears to be a bacon-shaped leftover district extending from Lady Bird Lake up a narrow strip along MoPac to the northeastern boundary with Pflugerville. Many folks on both ends of this elongated district wonder what "common social and economic interests" are shared by the "contiguous population" of District 7. However, we understand the challenges of drawing districts that will satisfy all parties, given the mapping criteria that you are required to meet. In addition, we have come to appreciate that there are a number of shared traits in District 7 since the population includes mostly single family neighborhoods located in the central city area that share similar concerns about interior land use patterns and development pressure (such as tear-downs and McMansions), traffic problems, rising property tax burdens, historical preservation, infill growth, short term rentals, and MoPac expansion, to name a few. However, we believe that the balance of the mapping criteria do not support the configuration of District 7 because it fails to account for the greater affinity of community interests, neighborhood regions, and geographic boundaries in the central and west parts of Austin.

Requested Boundary Tweaks To Prevent Neighborhood Division: At a minimum, we would request that the ICRC make two small adjustments to District 7 to respect the "geographic integrity" of our "neighborhood or local community of interest." In particular, we would request that the district boundaries be expanded to include West 35th Street and Mayfield Park (the portion of Precinct 266 below 35th Street) and to include Windsor Road just east of MoPac (the portion of Precinct 250 above Windsor). With these small changes, our neighborhood would no longer be divided across three separate districts, and the revised district would respect the boundaries of our neighborhood association as well as the Central West

Austin Combined Neighborhood Plan for our area. In addition to respecting our local neighborhood boundaries, these small extensions would comply with other mapping criteria, including encouraging geographical compactness, using geographically identifiable boundaries, and conforming to the census tract boundaries (Census Tracts 16.03 and 16.04) for our neighborhood.

Alternative Central West Austin Compact Map: We also request that the ICRC consider a more compact arrangement of the non-opportunity districts north of the river (namely Districts 6, 7, and 10). To this end, we have attached an Alternative Compact Map Proposal which uses the ICRC's population data to provide a more compact and reasonable allocation of districts that satisfies the various mapping criteria without changing or altering any opportunity district boundaries. The revised districts are shown in overlay over the Official Preliminary Map to show the relative changes which adjust only the boundaries between Districts 6, 7, and 10, leaving all other district boundaries in place. As you'll see, our Revised District 7 extends west out to Loop 360 and just past 183 to the north (but not all the way to Pflugerville), reflecting the development history in this area as well as other common social and economic interests shared by this area. As a consequence, Revised District 10 extends from 360 and north past 183 into some of the Williamson County precincts, and Revised District 6 takes over the northern portions of original District 7, again reflecting the development history here.

Compared to the Official Preliminary Map, the Alternative Compact Map Proposal makes Revised Districts 7 and 10 more compact, and Revised District 6 appears to be roughly as compact as before. By one calculation, Revised District 7 is 77% more compact, with the length shrinking from 15 miles to 10.5 miles. In addition, Revised District 10 is 68% more compact, with the width shrinking from 12.5 miles to 8.5 miles. Finally, Revised District 6 is only 18% larger due to the increases in length from 11 to 13 miles. The Alternative Compact Map Proposal also provides a more accurate reflection of Austin's development history which started from the center and extended outward. It is specifically noted that both sides of the 183 corridor are included in the Revised District 10, properly reflecting this historical community of interest which developed on both sides of 183. Finally, it is noted that the populations in Revised Districts 6, 7, and 10 of the Alternative Compact Map Proposal are closer to the target population than in the ICRC's Official Preliminary Map.

Thank you for your considering our request.

Sincerely,

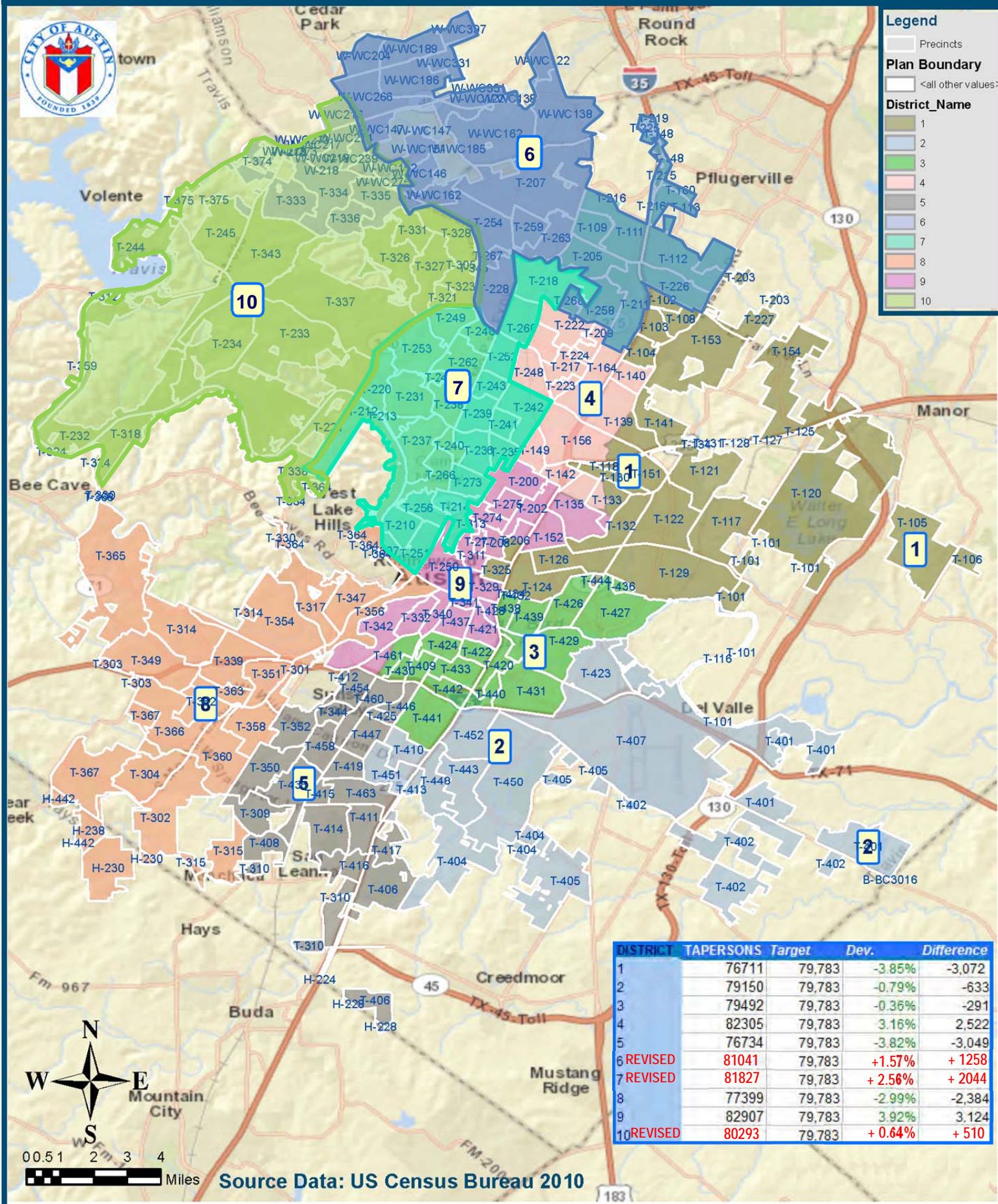

Catherine Kyle

President

West Austin Neighborhood Group

PS -- If there is any significant re-drawing of the districts to divide north and south Austin such as proposed by the Compact District Coalition map, we would request an extension of the scheduled implementation be provided to allow additional public comment.

Central West Austin Neighborhood District Map Proposal Based On ICRC Population Data (October 25, 2013)



POPULATION TOTALS FOR REVISED DISTRICTS 6, 7, AND 10 USING ICRC DATA
(Other District Boundaries Unchanged*)

District 7	TAPERSONS	District 6	TAPERSONS	District 10	TAPERSONS
T-210	2107	T-263	4235	T-221	1191
T-214	3474	T-259	3548	T-337	4941
T-218	7691	T-207	6335	T-338	801
T-235	3415	T-267	2502	T-364	108
T-236	3523	W-WC122	31	T-233	4342
T-239	2818	W-WC138	118	T-321	564
T-241	2058	W-WC146	4666	T-323	3293
T-242	5930	W-WC147	1676	T-345	3
T-243	2114	W-WC151	2848	T-305	9
T-251	4908	T-228	2536	T-326	3283
T-252	3471	W-WC185	55	T-327	3801
T-256	2542	W-WC186	4090	T-328	5710
T-260 (partial)**	0	W-WC189	3652	T-331	3608
T-273	3314	W-WC204	2101	T-234	3059
T-212	2996	W-WC266	624	T-343	4637
T-213	0	W-WC331	1843	T-244	953
T-266	626	W-WC397	2296	T-245	1850
T-237	2437	W-WC162	2577	T-375	60
T-238	3923	T-109	3862	T-312	1
T-240	1232	T-111	7383	T-359	197
T-262	7156	T-112	3239	T-232	1102
T-246	2233	T-113	1684	T-318	89
T-249	3447	T-148	53	T-324	38
T-253	4025	T-160	340	T-333	4882
T-231	3287	T-205	5590	T-334	3965
T-247	940	T-211	3170	T-335	3829
T-220	2160	T-215	53	T-336	2833
		T-216	107	T-374	171
		T-219	0	W-WC218	2876
		T-225	23	W-WC217	2146
		T-226	3286	W-WC216	0
		T-258	4040	W-WC274	1728
		T-268	2478	W-WC239	2508
				W-WC275	2427
				W-WC273	0
				W-218	0
				W-273	0
				W-WC152	3443
				T-254	5845
Rev. Dist. 7 Total	81827	Rev. Dist. 6 Total	81041	Rev. Dist. 10 Total	80293

* Tweaking District 7 to include remainder of Pemberton Neighborhood would add 529 to total population.

** Precinct T260 is split with District 4, but the portion in District 7 includes (roughly) 0 population.