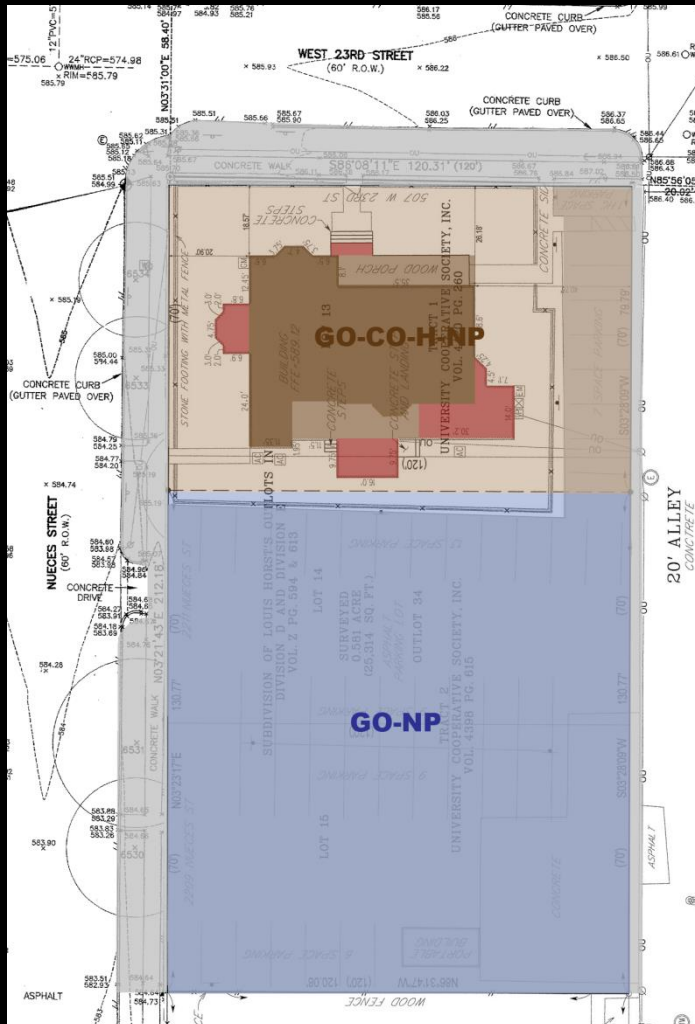




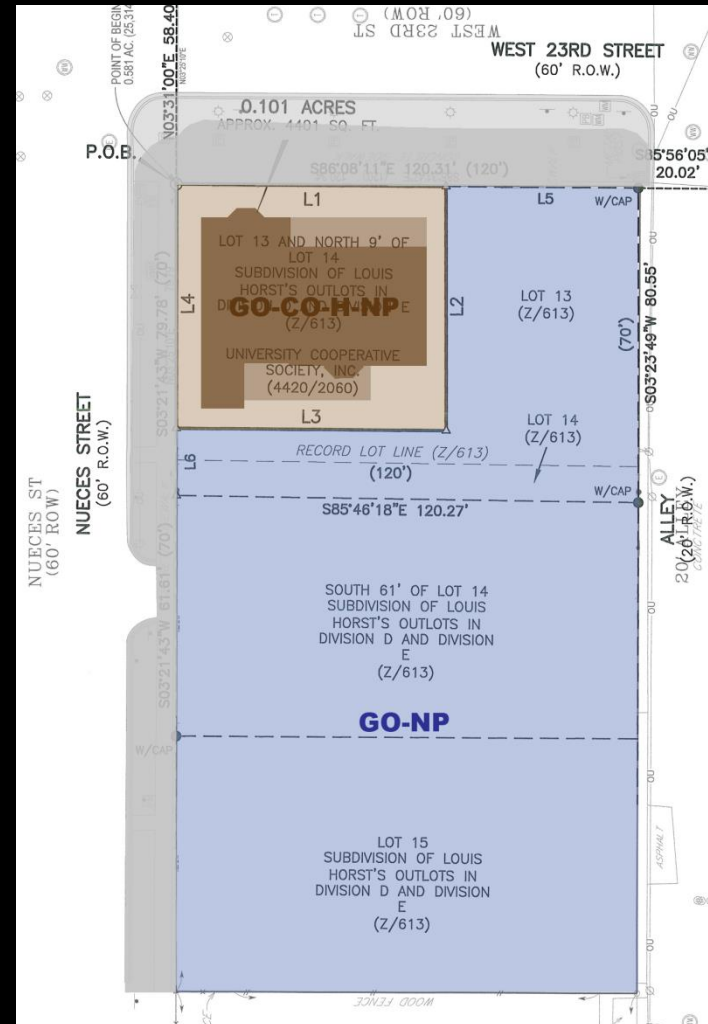
Requesting approval of:

- Revision to metes and bounds of current site with Historic zoning designation.
- Removal of additions to building in preparation for rehabilitation based on 1900s configuration.
- Relocation of historic building on current site.

Item 1: Zoning



HISTORICALLY ZONED SITE

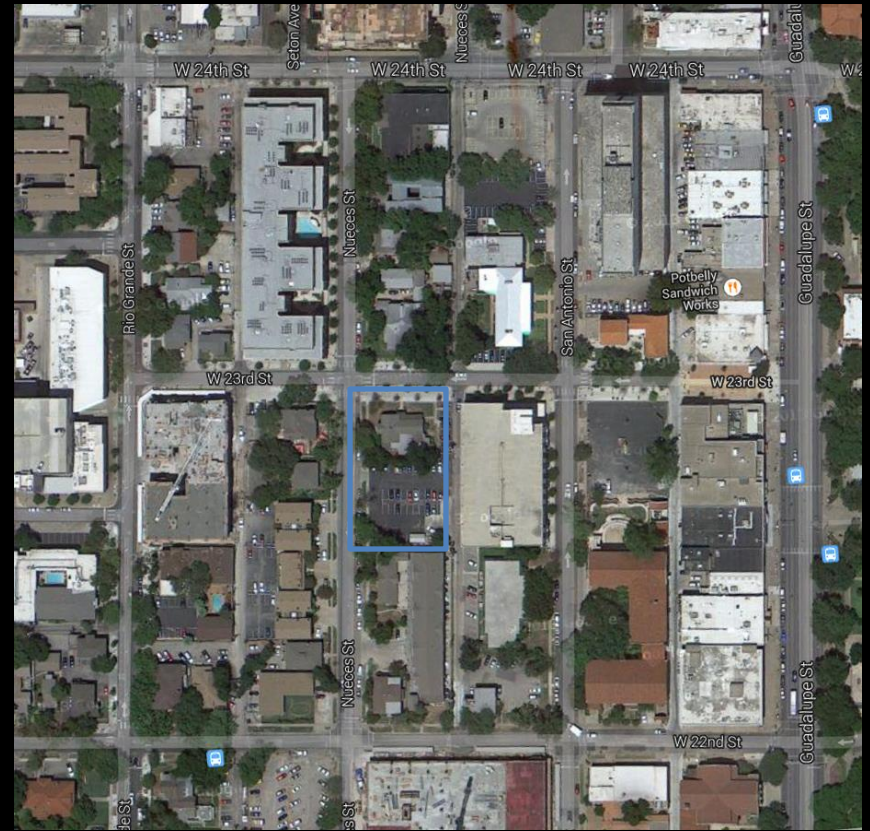


PROPOSED W/ CURRENT CURB

Item 1: Zoning

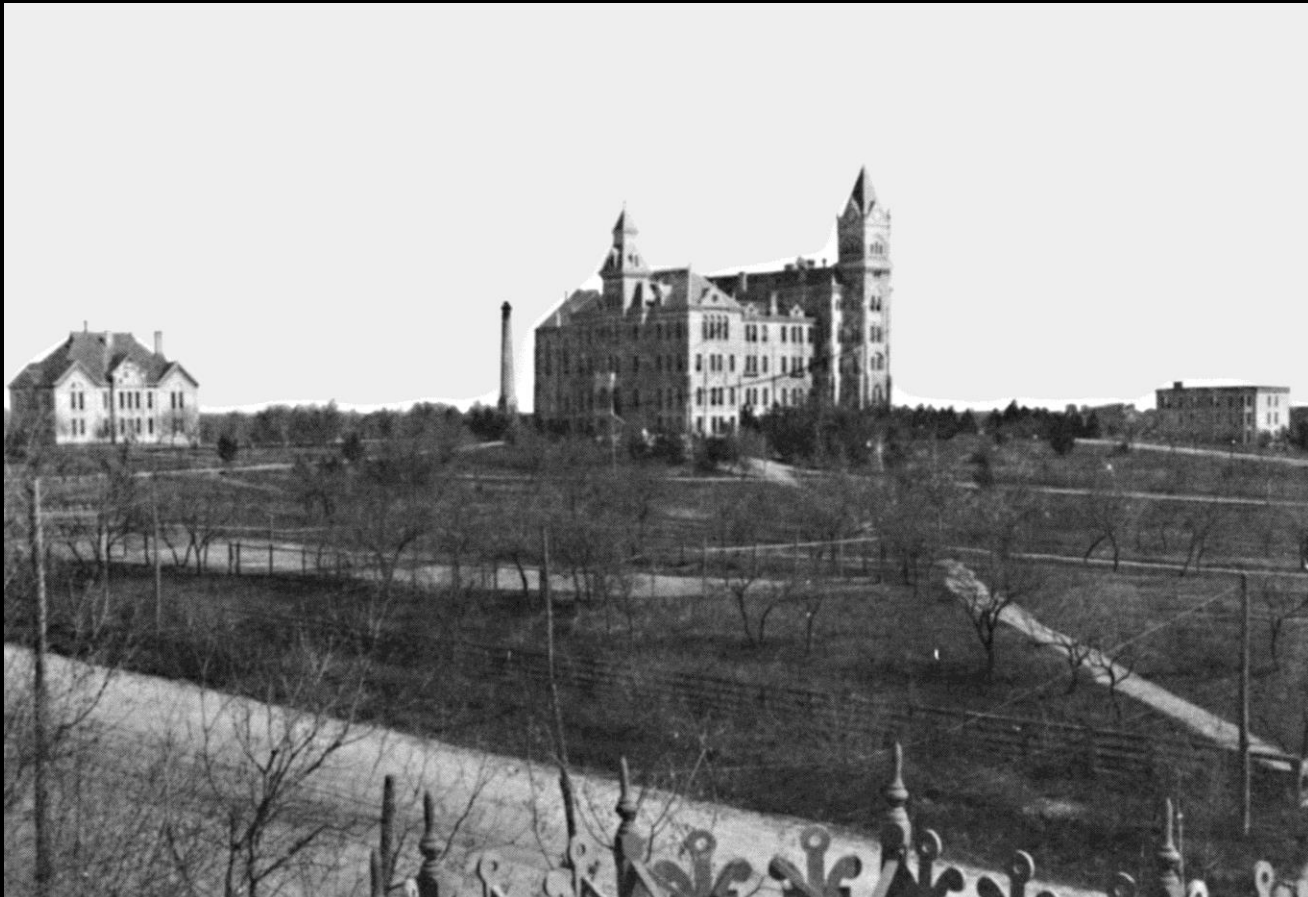


1900



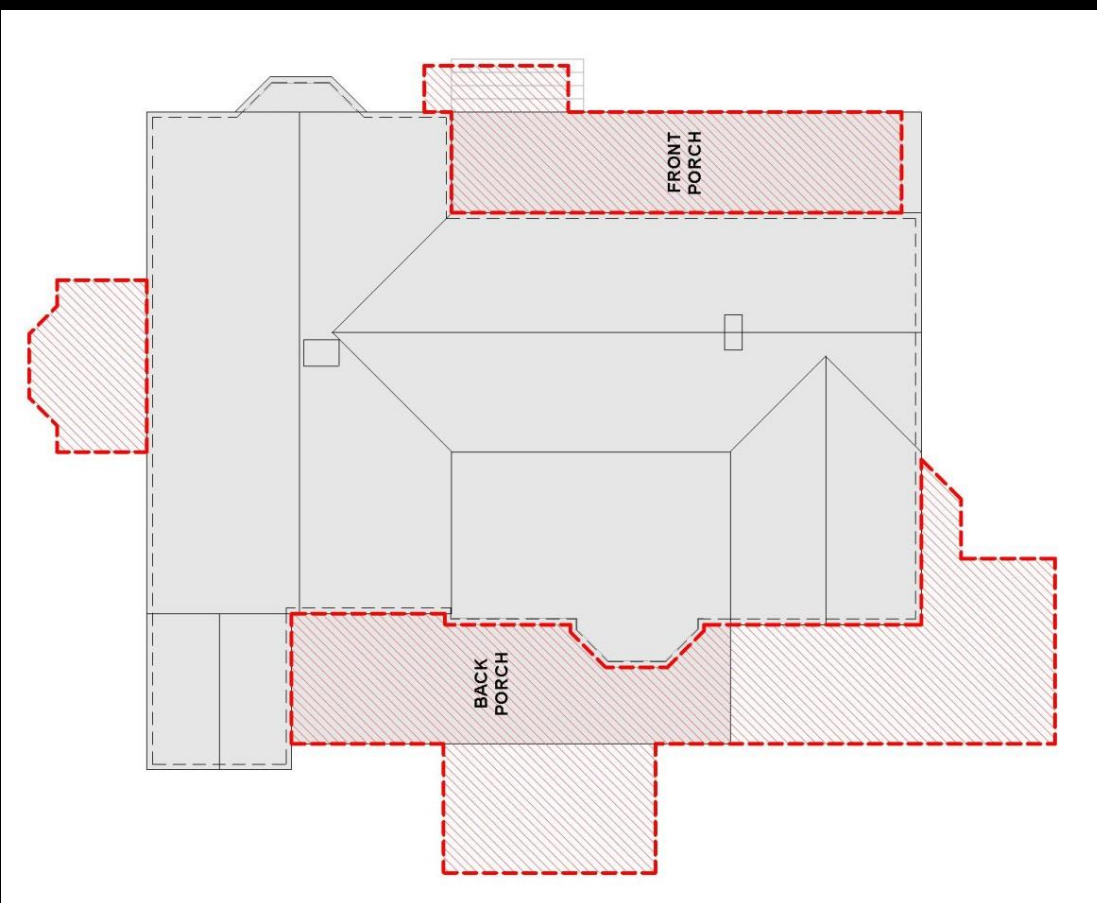
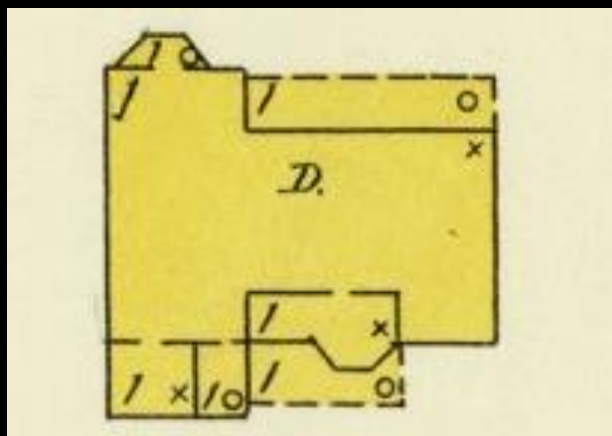
CURRENT

Item 2: Period of Significance 1900



The University of Texas at Austin campus 1900

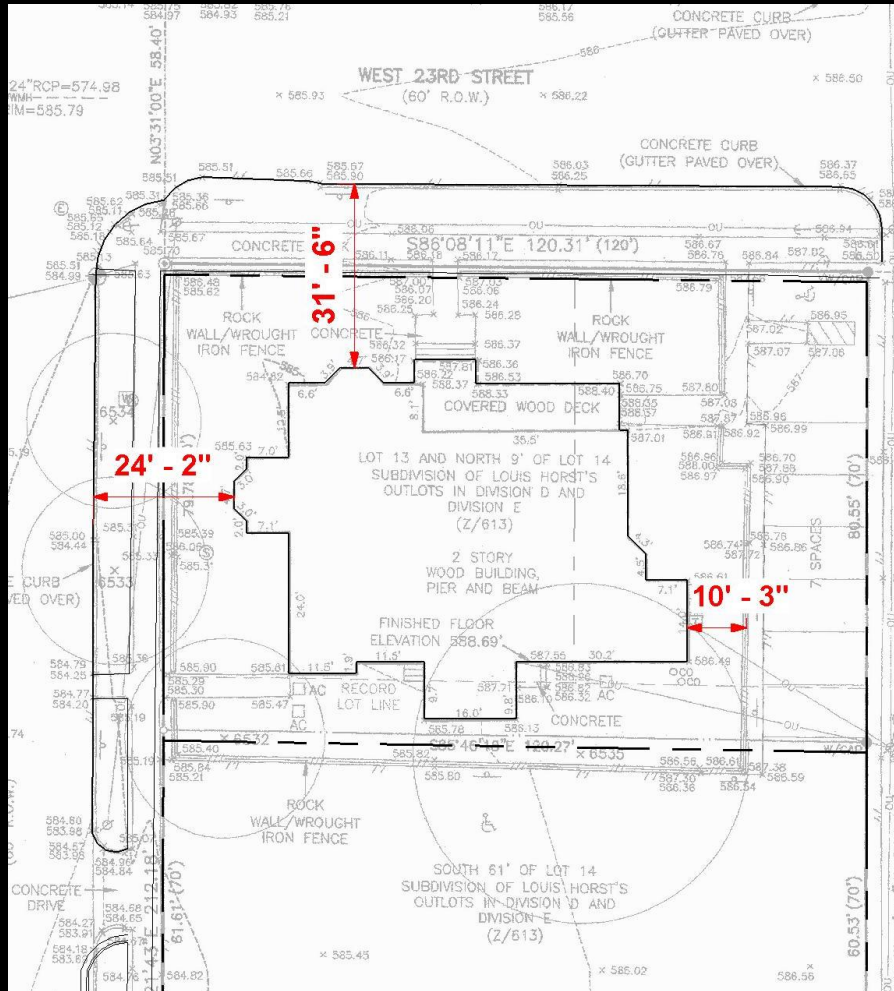
Item 2: Period of Significance 1900



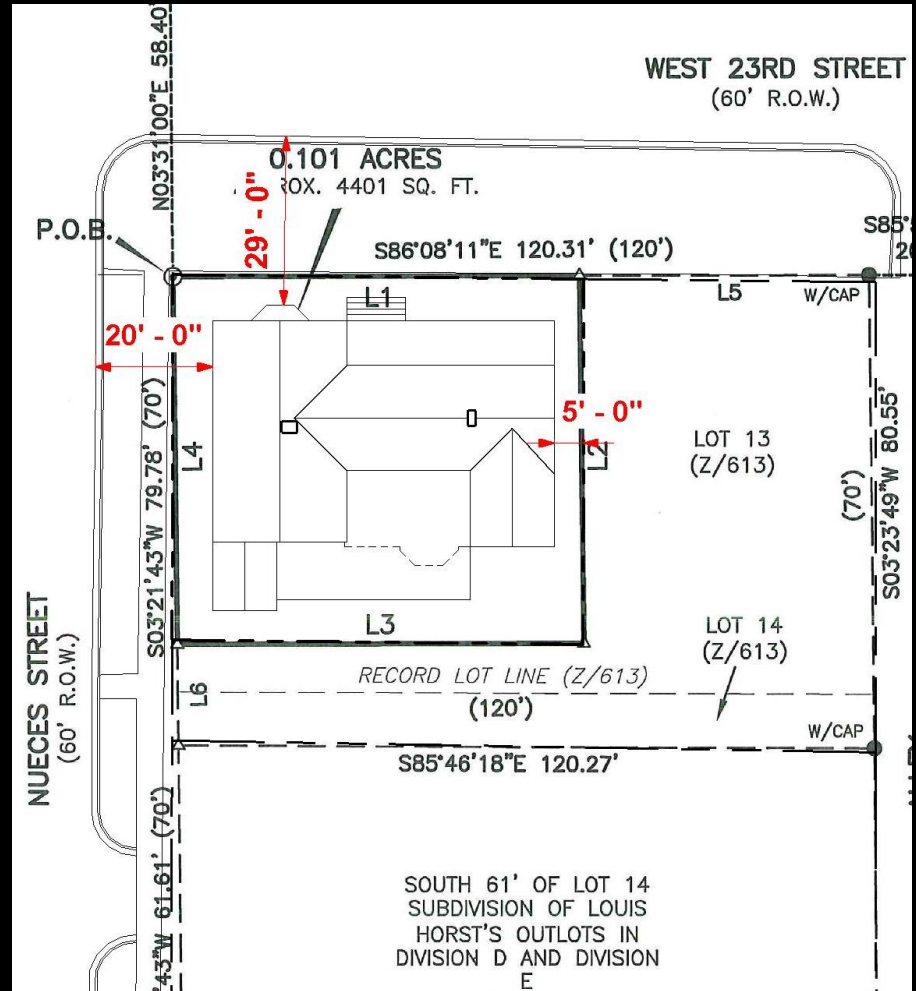
Item 3: Relocation within Site



Item 3: Relocation within Site



HISTORICALLY ZONED LOCATION



PROPOSED LOCATION

Item 3: Relocation within Site



23RD STREET



NUECES



175'

80'

65'

FOR REGULATORY REVIEW ONLY. IT MAY NOT BE USED FOR PERMIT
OR CONSTRUCTION. DONNA CARTER, TEXAS REGISTRATION #8207



23rd STREET ELEVATION



NUECES STREET ELEVATION

Requesting approval of:

- Revision to metes and bounds of Historic Site.
- Removal of additions to building in preparation for rehabilitation based on 1900s configuration.
- Relocation of historic building on current site.