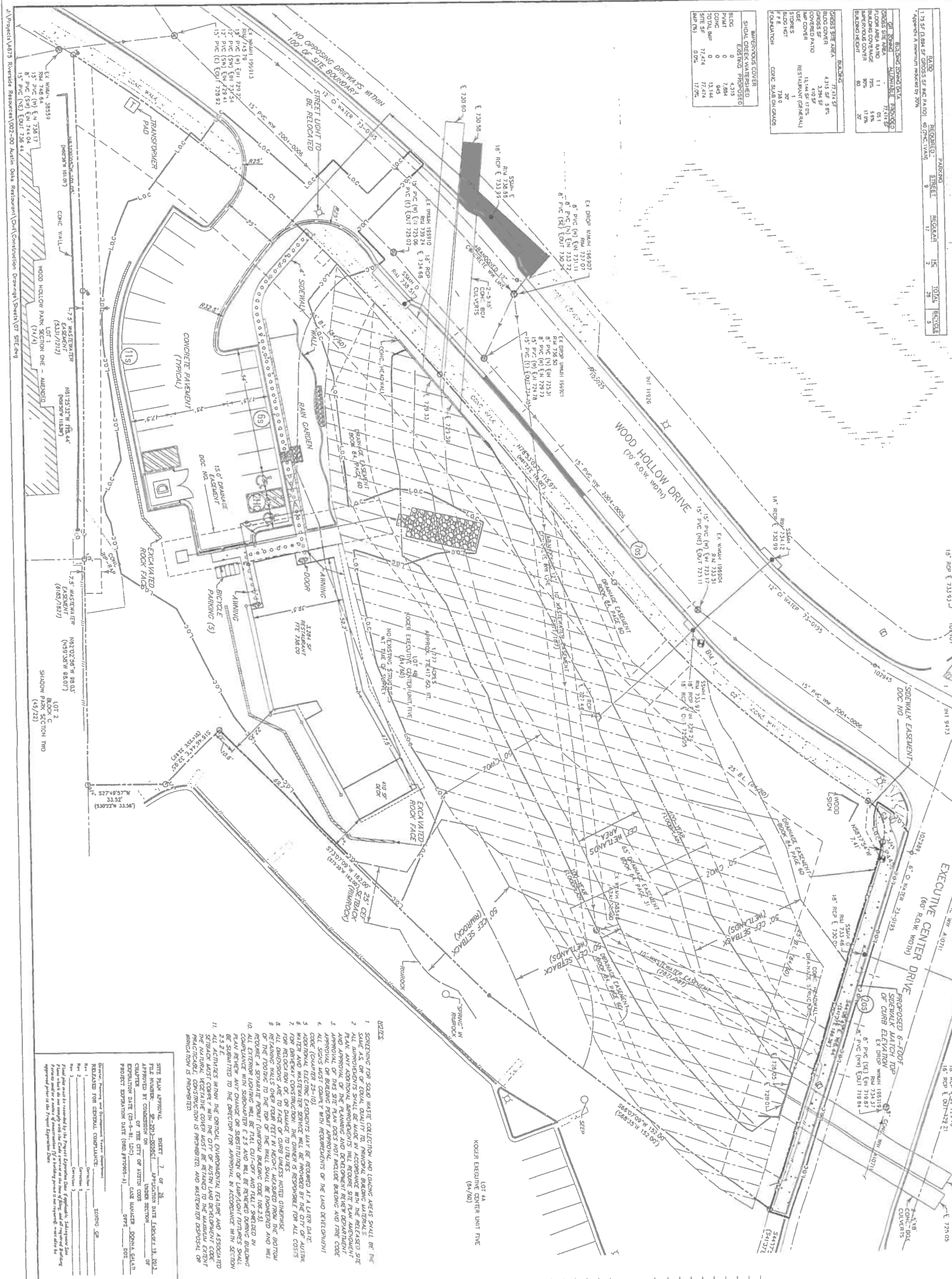
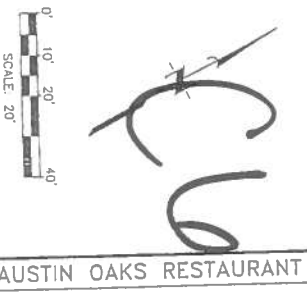


BLDG. AREA	4,315 SF
CONCRETE	0
WOOD	0
GLASS	0
STEEL	0
FOUNDATION	0
MECHANICAL	0
ELECTRICAL	0
PLUMBING	0
PAINT	0
CONCRETE	0
WOOD	0
GLASS	0
STEEL	0
FOUNDATION	0
MECHANICAL	0
ELECTRICAL	0
PLUMBING	0



- NOTES**
1. SCOURING FOR SOLID WASTE COLLECTION AND TACKLING AREAS SHALL BE THE SAME AS OR EQUAL QUALITY TO THE ADJACENT AREAS.
 2. ALL EXISTING UTILITIES SHALL BE MAINTAINED AND PROTECTED.
 3. ALL EXISTING UTILITIES SHALL BE MAINTAINED AND PROTECTED.
 4. ALL EXISTING UTILITIES SHALL BE MAINTAINED AND PROTECTED.
 5. ALL EXISTING UTILITIES SHALL BE MAINTAINED AND PROTECTED.
 6. ALL EXISTING UTILITIES SHALL BE MAINTAINED AND PROTECTED.
 7. ALL EXISTING UTILITIES SHALL BE MAINTAINED AND PROTECTED.
 8. ALL EXISTING UTILITIES SHALL BE MAINTAINED AND PROTECTED.
 9. ALL EXISTING UTILITIES SHALL BE MAINTAINED AND PROTECTED.
 10. ALL EXISTING UTILITIES SHALL BE MAINTAINED AND PROTECTED.
 11. ALL EXISTING UTILITIES SHALL BE MAINTAINED AND PROTECTED.
 12. ALL EXISTING UTILITIES SHALL BE MAINTAINED AND PROTECTED.
 13. ALL EXISTING UTILITIES SHALL BE MAINTAINED AND PROTECTED.
 14. ALL EXISTING UTILITIES SHALL BE MAINTAINED AND PROTECTED.
 15. ALL EXISTING UTILITIES SHALL BE MAINTAINED AND PROTECTED.



- EXISTING LEGEND**
- FIRE HYDRANT W/ GATE VALVE
 - WATERLINE W/ GATE VALVE
 - TAP & SLEEVE VALVE
 - WATERLINE W/ REDUCER
 - WATER METER
 - WATERMETER MANHOLE
 - WASTEWATER W/ CLEANOUT
 - STORM SEWER MANHOLE
 - STORM SEWER W/ INLET
 - GROUND CONTOUR

- PROPOSED LEGEND**
- FIRE HYDRANT W/ GATE VALVE
 - WATERLINE W/ GATE VALVE
 - TAP & SLEEVE VALVE
 - WATERLINE W/ REDUCER
 - WATER METER
 - WATERMETER MANHOLE
 - WASTEWATER W/ CLEANOUT
 - STORM SEWER MANHOLE
 - STORM SEWER W/ INLET
 - GROUND CONTOUR
 - EXCAVATED WALL FACE
 - NO ROUTE
 - LIMITS OF CONSTRUCTION
 - PRELIMINE

NO	DATE	REVISIONS
1	APR	

AUSTIN OAKS RESTAURANT
 2011 AUSTIN OAKS LTD.
 RIVERSIDE RESOURCES
 AUSTIN, TX
 7801 WOOD HOLLOW DRIVE

JONES & CARTER, INC.
 ENGINEERS-PLANNERS-ARCHITECTS
 1101 DAVENPORT BLVD., SUITE 400
 AUSTIN, TEXAS 78704 (512) 441-5800

SCALE: 1" = 20'
 DATE: FEBRUARY 2013
 JOB NO: A573-002
 SUBMITTED: DMC, BR, EX
 DRAWN BY: DMC, BR, EX
 CHECKED BY: DMC, BR, EX
 PROJECT EXPANSION DATE (SHEET NO. 1) _____ DATE: _____

RELEASED FOR PERMIT: _____ DATE: _____

AUSTIN OAKS RESTAURANT
 2011 AUSTIN OAKS LTD.
 RIVERSIDE RESOURCES
 AUSTIN, TX
 7801 WOOD HOLLOW DRIVE

SITE PLAN