



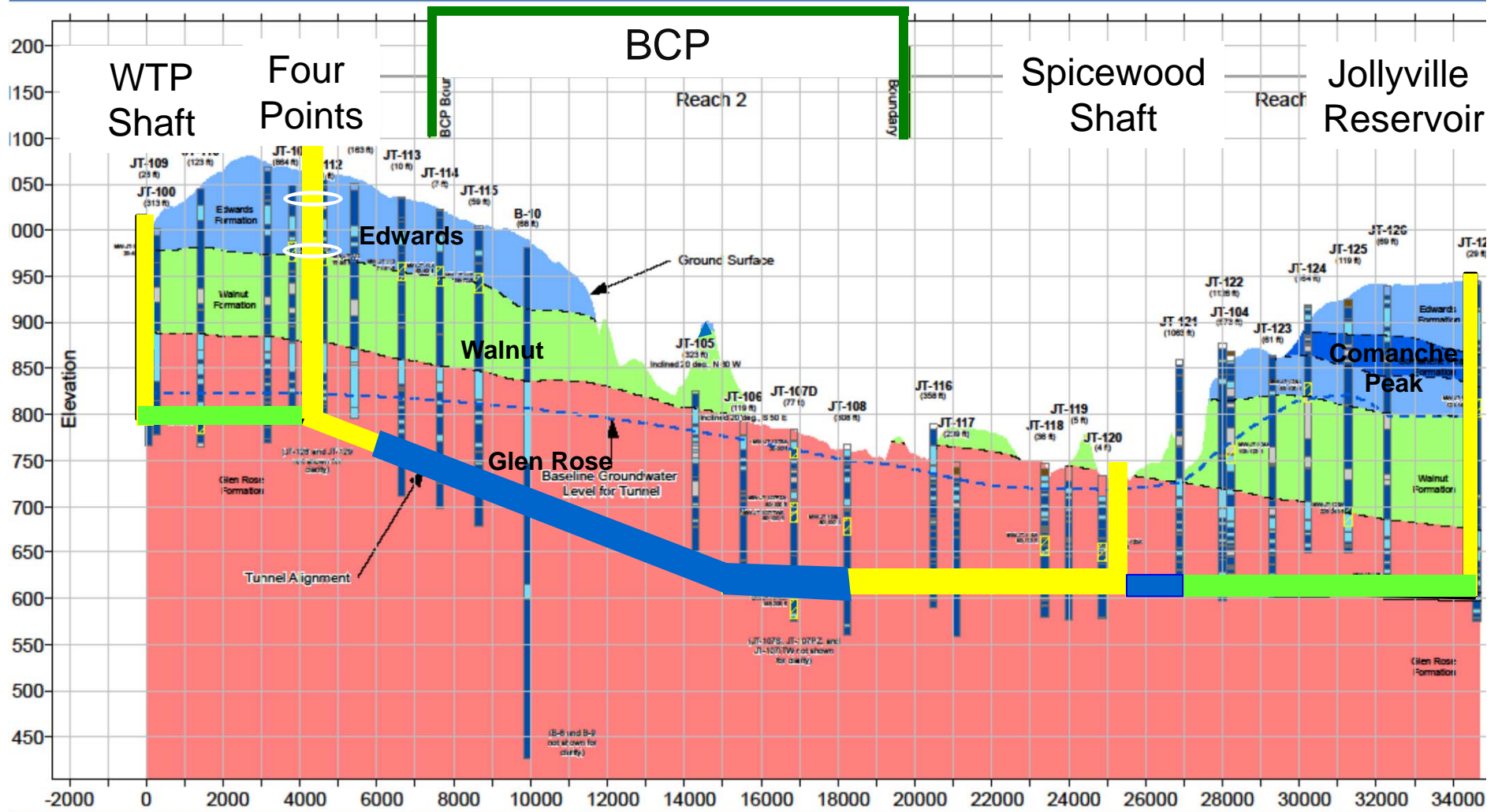
# **JOLLYVILLE TRANSMISSION MAIN: Environmental Commissioning Monthly Report**

Presented to the Austin Environmental Board  
January 15, 2014

Thais Perkins, Watershed Protection Department  
David Johns, Watershed Protection Department

# Jollyville Transmission Main Project as of 1/6/14

- = excavated
- = pipe laid
- = pipe laid & grouted





# Environmental Commissioning Activities - JVTM

- Monthly shaft site (surface) visits concurrent with plant site visits
- Excavation and tunnel mapping complete.
- Meetings of the Environmental Commissioning Coordination Group (ECCG) to as needed resolve potential issues
  - *Reviewed Water Management Plan*
  - *Reviewed shaft backfill requirements and shift to use of Controlled Low-Strength Material*
- Environmental Monitoring
  - *With exception of remotely monitored wells, most sites on a monthly monitoring interval (point data or continuous data)*
  - *Completed JVTM Monitoring report #5*

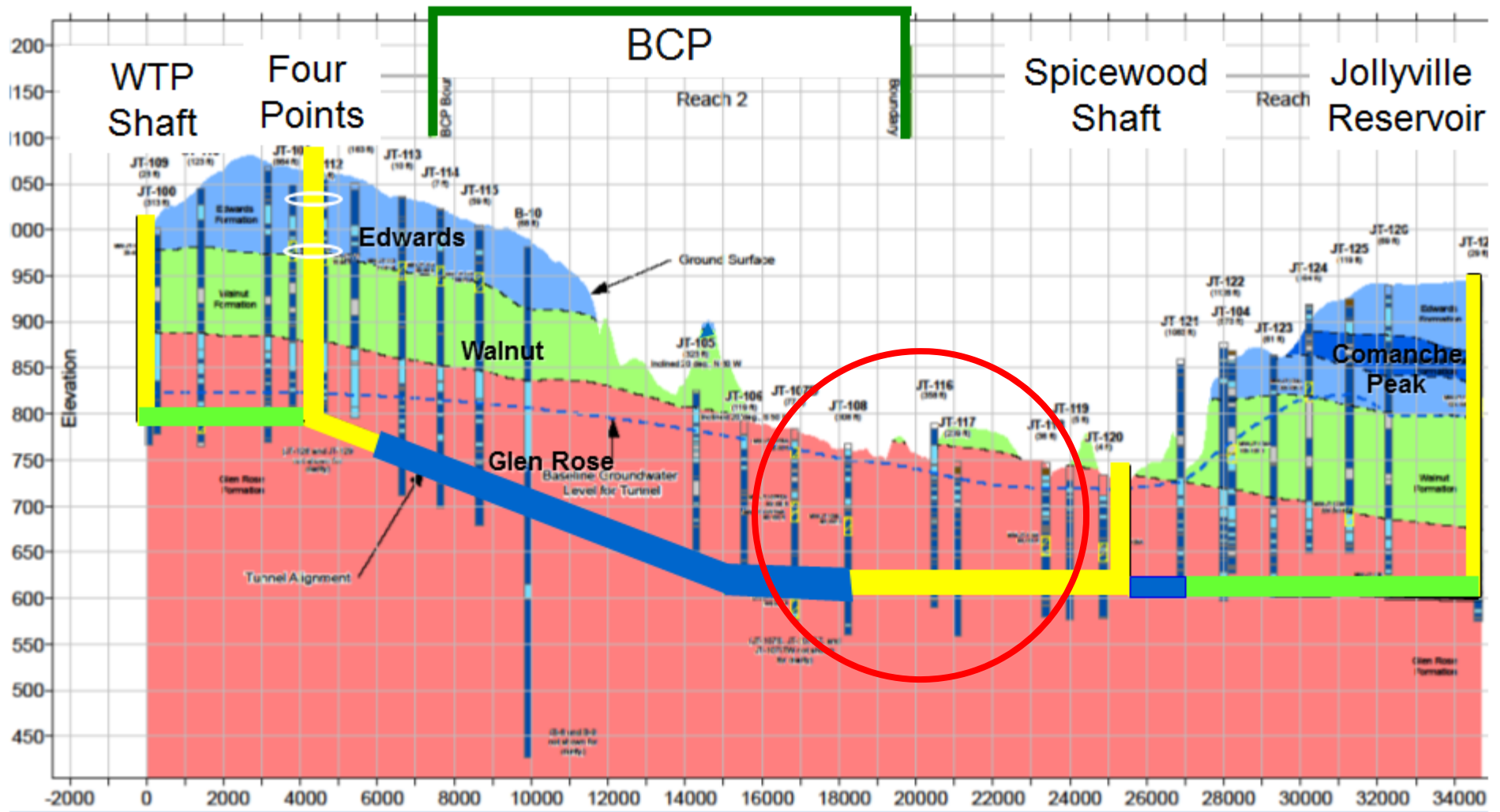


- Environmental Cost Summary

Initial INTERA Contract Amount	\$ 1,773,890
Total Amount Billed to Date (to October 2013)	\$ 1,424,962
<b>Total Remaining</b>	<b>\$ 324,624</b>

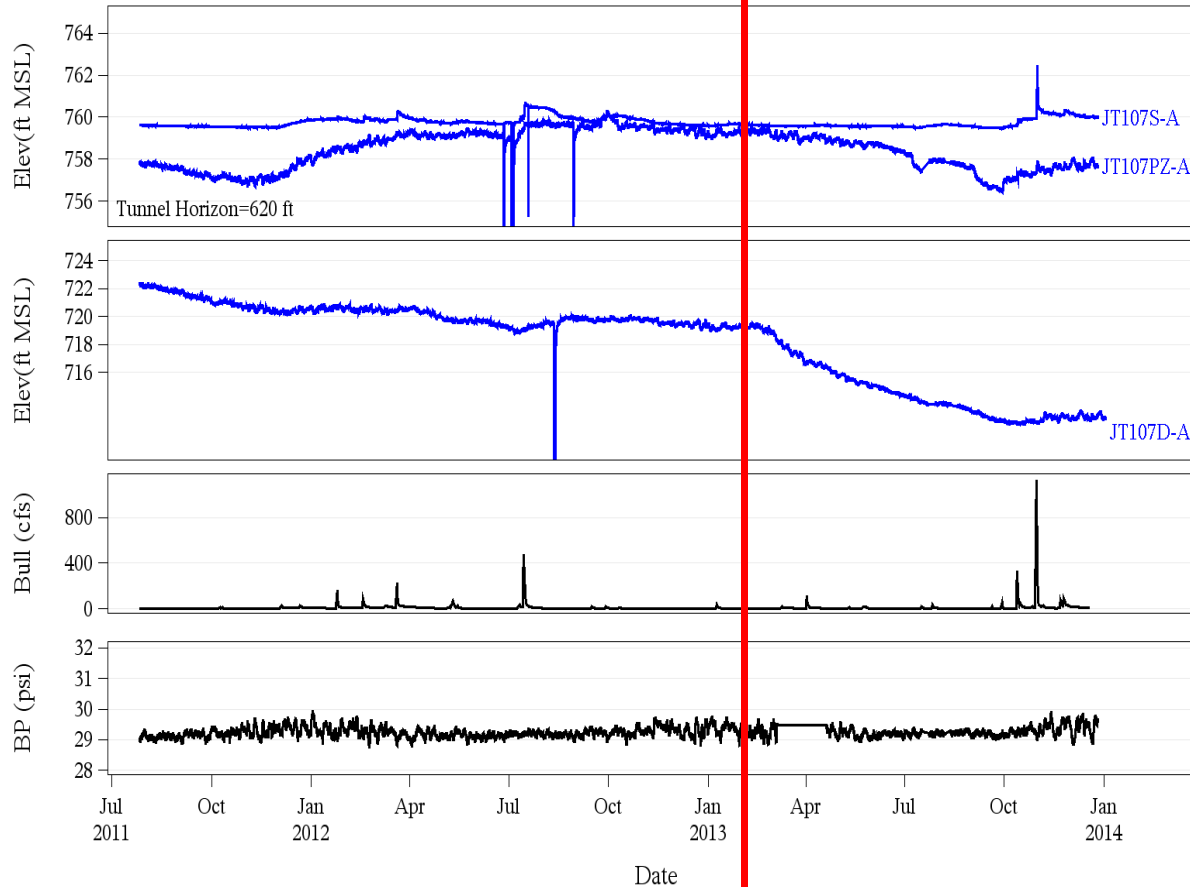
# BCP Wells

- = excavated
- = pipe laid
- = pipe laid & grouted

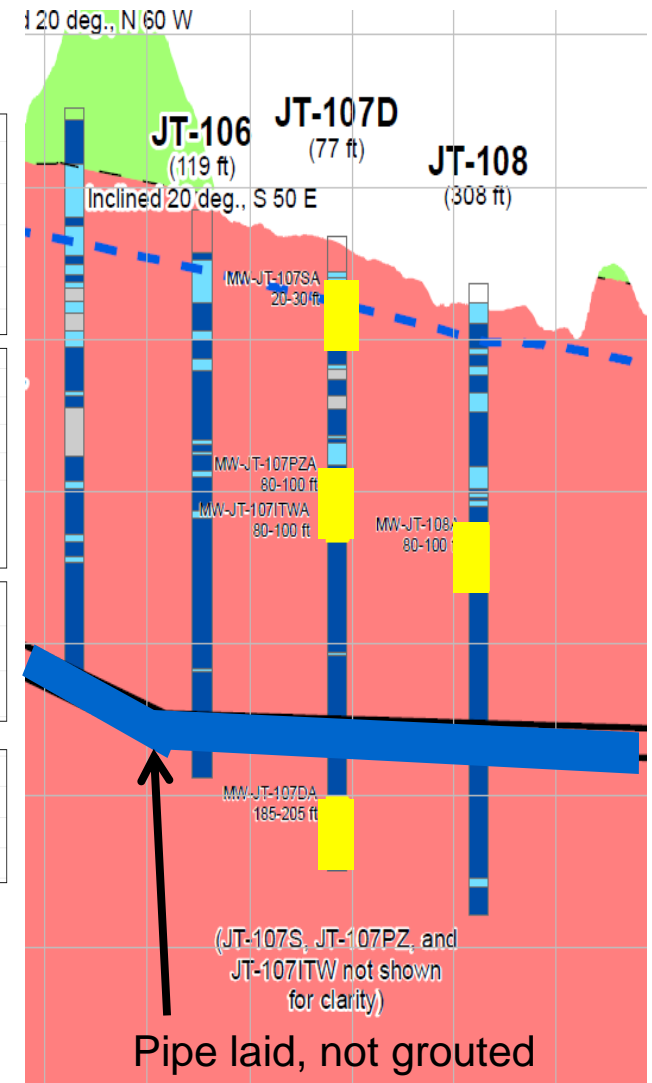


Tunnel passes 107 cluster  
2/13/13

JT-107 elevation, Bull flow and barometric pressure

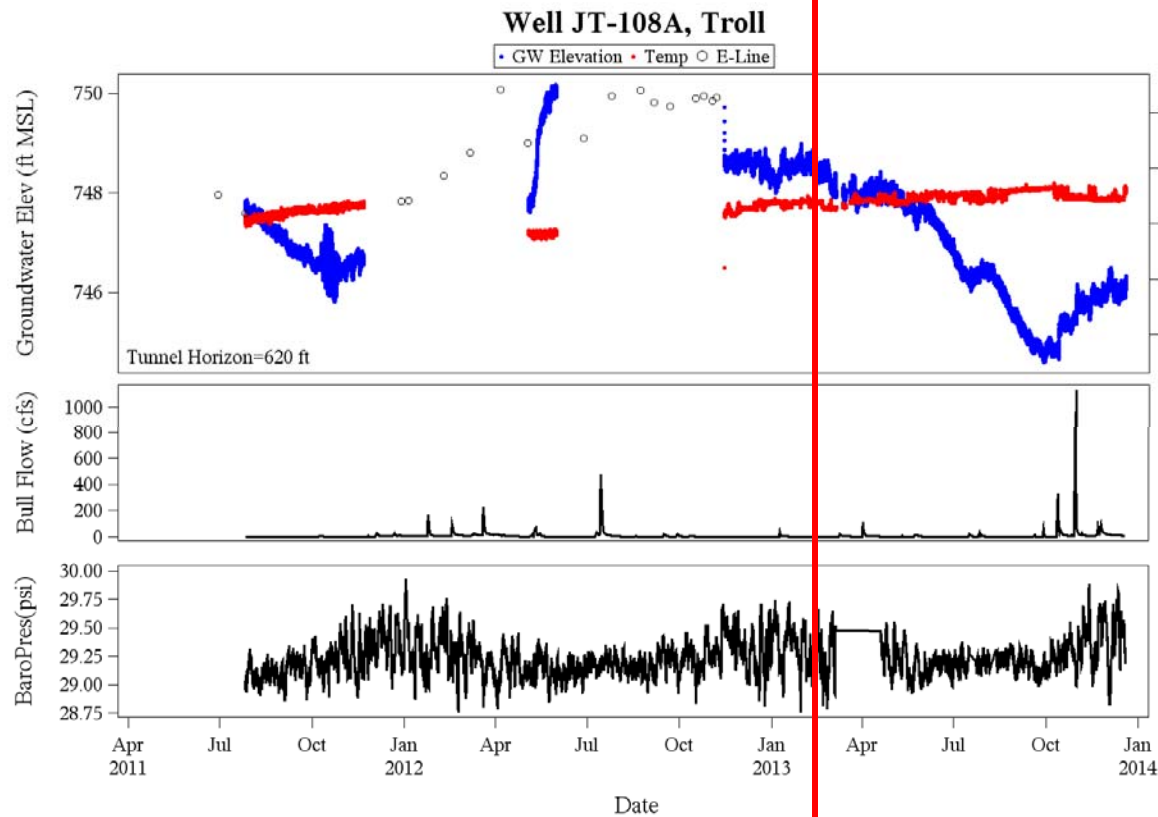


City of Austin DRAFT: QA/QC review pending

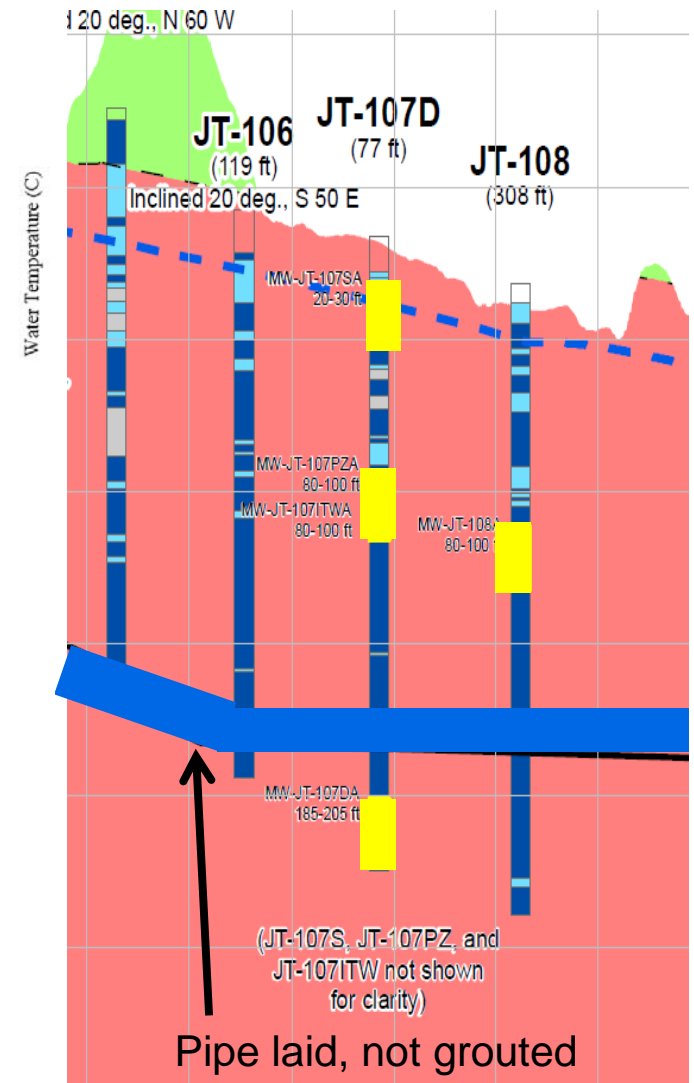


- decline (~8 feet) in deepest well as tunnel passes with some recovery after rain
- small decline in PZ-A (~3 ft) with some recovery after rain
- no decline in 107S-A.

Tunnel passes 108 well



City of Austin DRAFT: QA/QC review pending

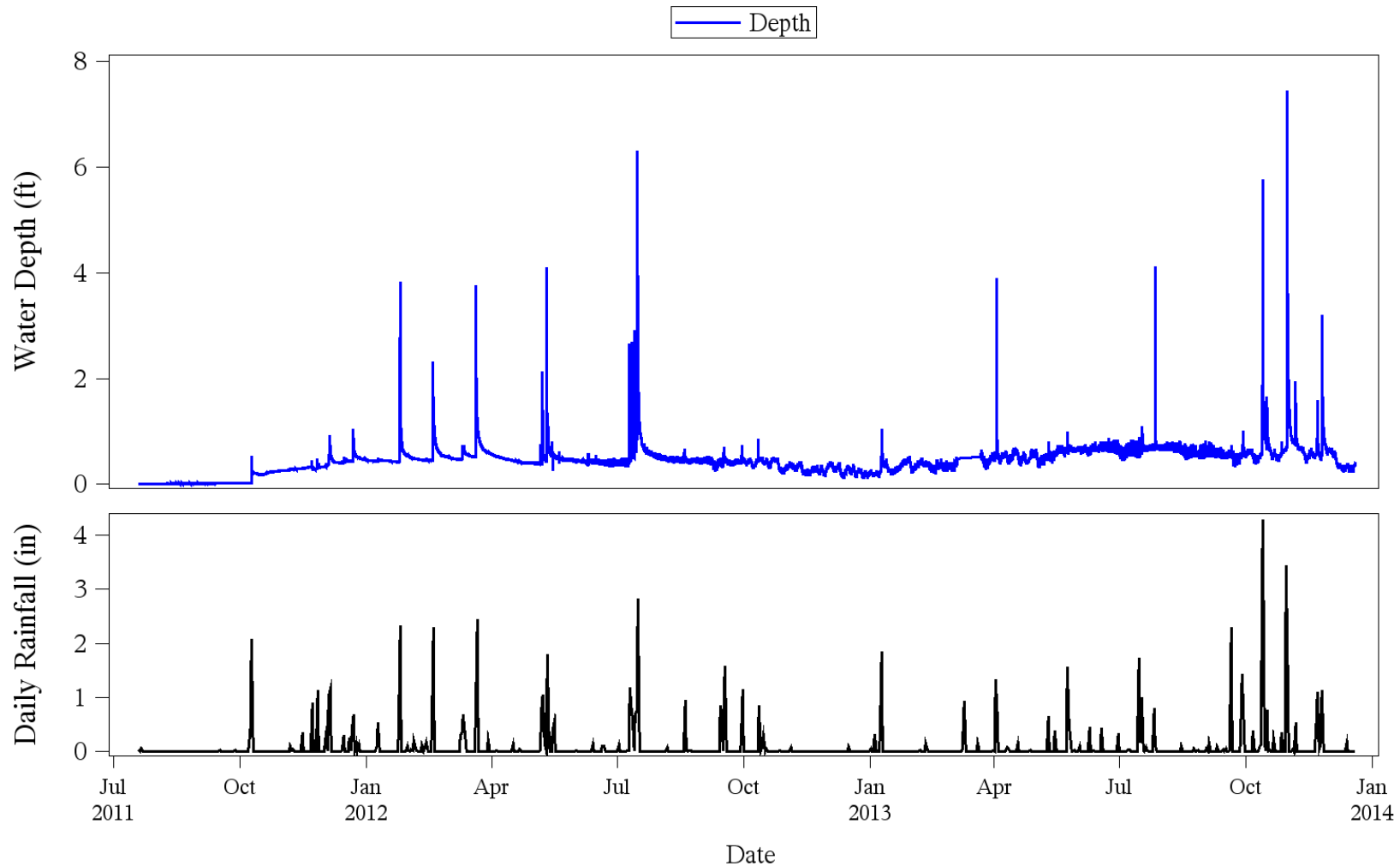


Decline seen in well after tunnel passes, dropped below 2011 minimum in September and then recovered with October rain events



# Bull Creek @ Trib 7 (Pit Spring proxy)

Bull Creek Spicewood Springs 7th Crossing, Troll

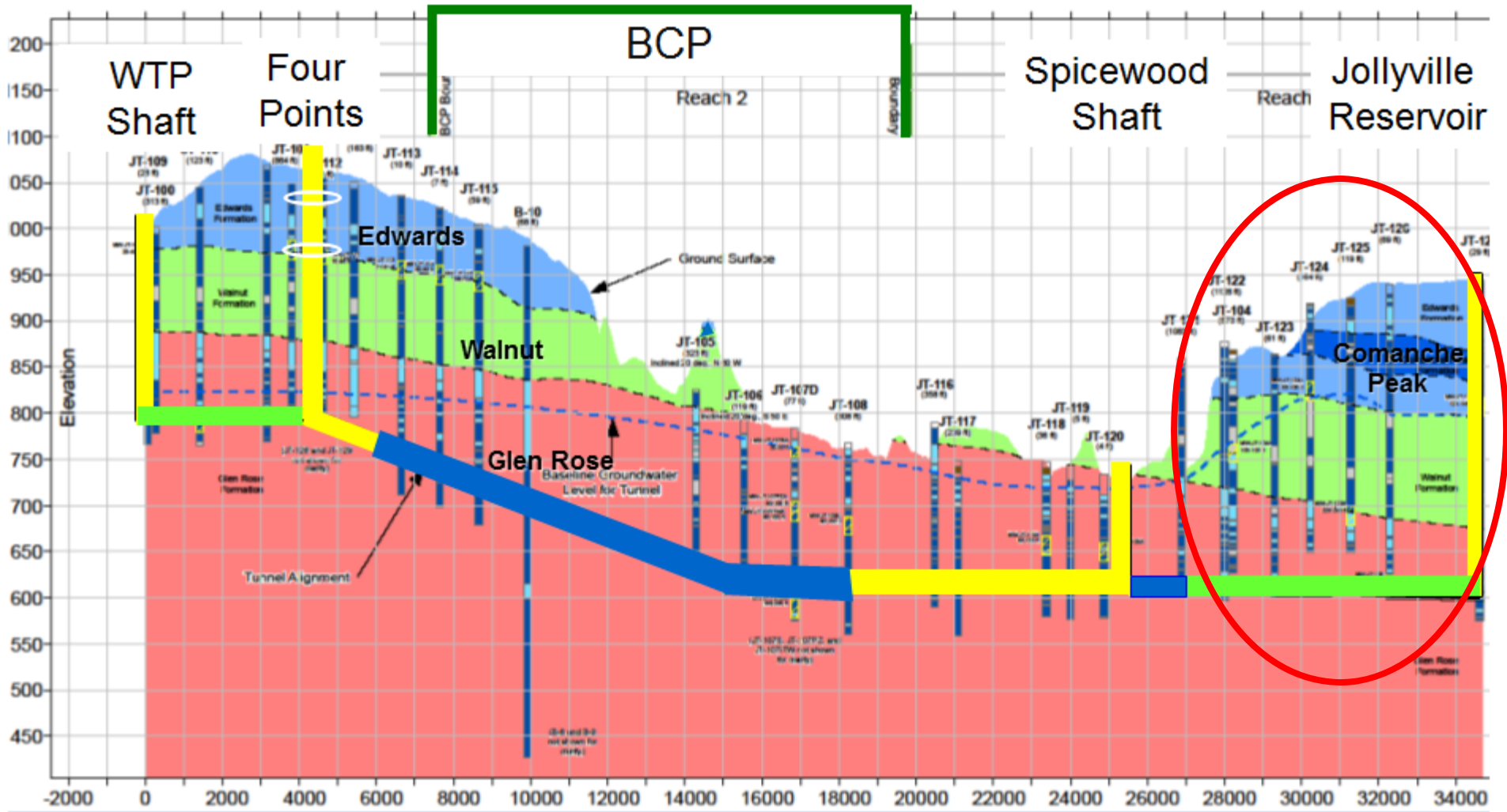


City of Austin DRAFT: QA/QC review pending

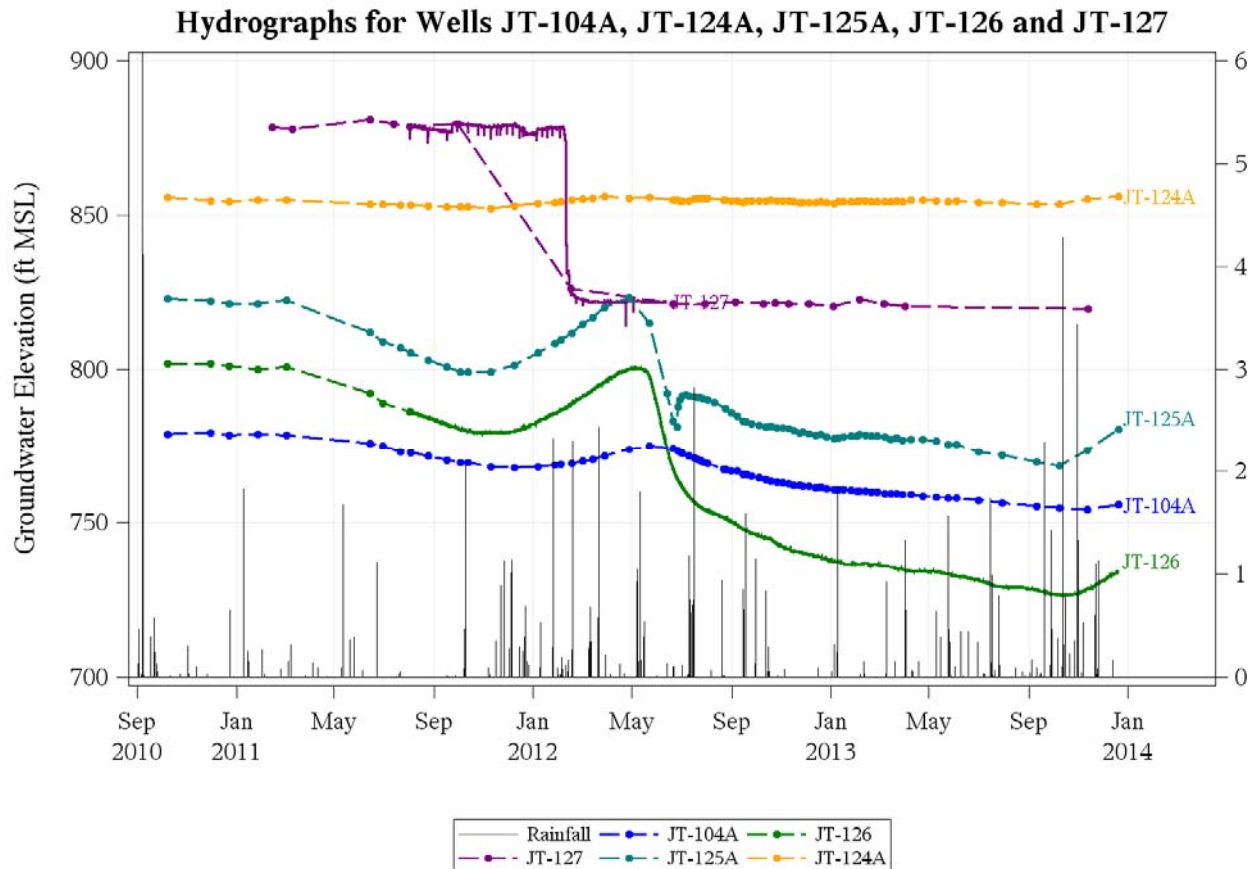


# West Side Wells

- = excavated
- = pipe laid
- = pipe laid & grouted

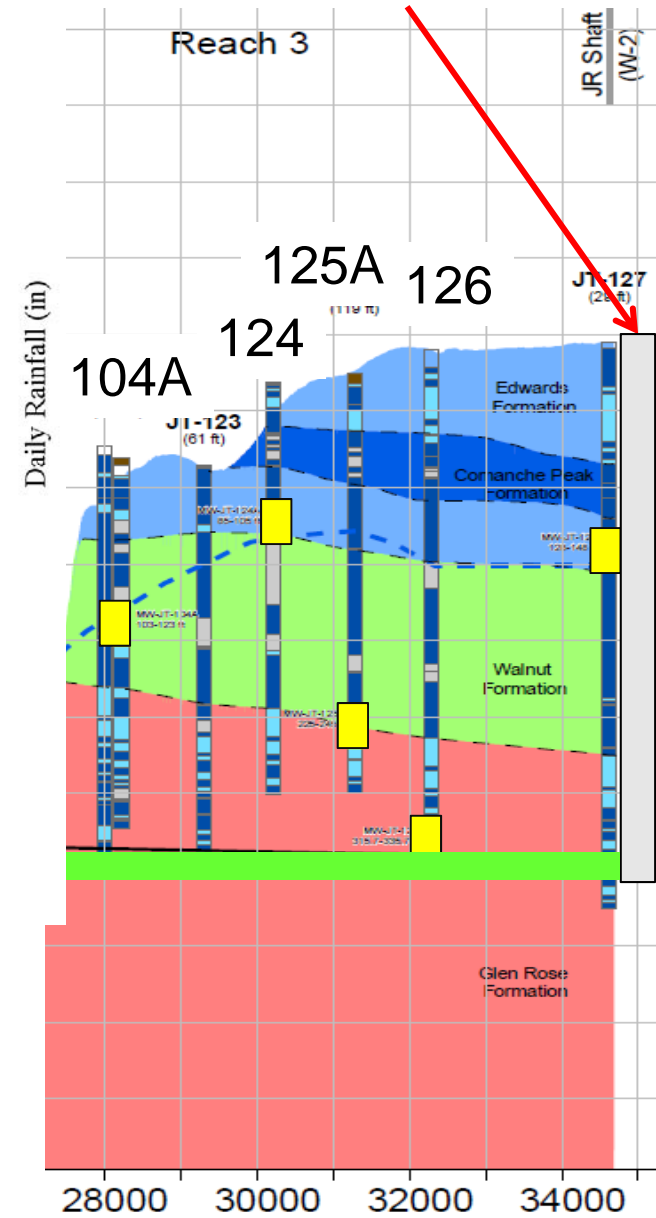


## East Side Wells

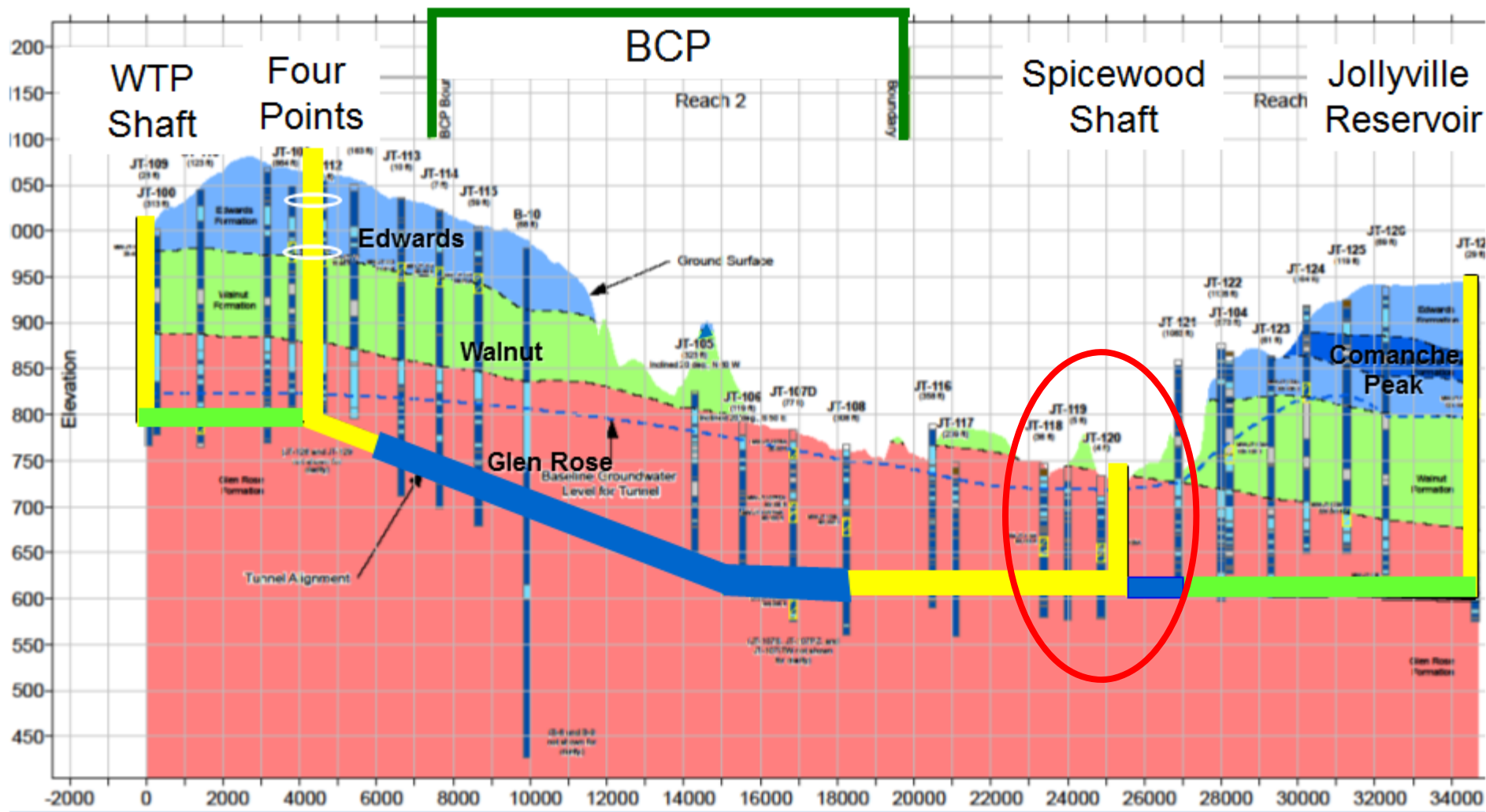


City of Austin DRAFT: QA/QC review pending

## Jollyville Reservoir Shaft (open)

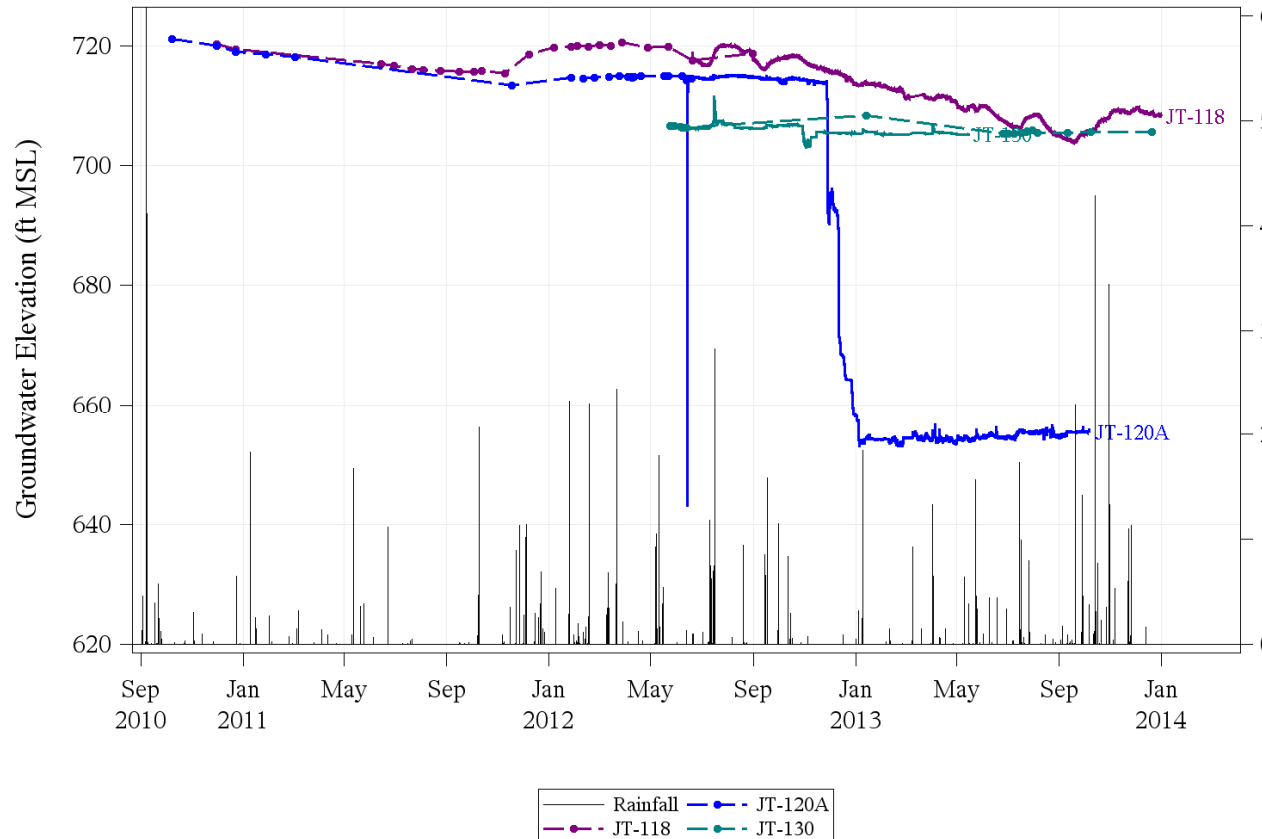


- Reach 3 excavation complete. Pipe laid and some grouting complete from west end.
- Most wells saw an uptick after October rain events (excluding 104A and 127)
- We expect groundwater levels to recover post-grouting of the shaft and are monitoring response



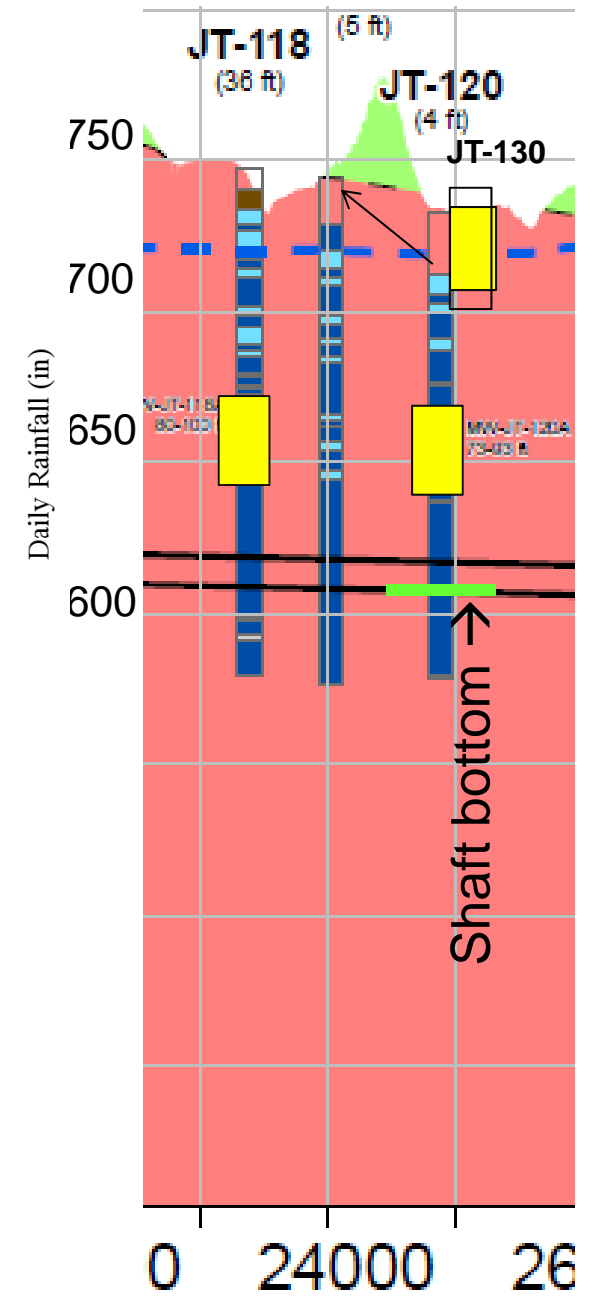
# Spicewood Shaft Wells

Hydrographs for Wells JT-118, JT-120A and JT-130



City of Austin DRAFT: QA/QC review pending

- JT-120 (adjacent to shaft) water level at bottom of screen
- JT-118 declines influenced by shaft and responsive to rainfall
- JT-130 relatively flat





**Pit Spring 7/2/13**



## **Environmental Monitoring Update – Surface flow**

- Main stem of Bull Creek and all springs still flowing at high levels post-October rain
- Nondetects for indicators of mining, vehicular operation, and drilling (TPH, Cu, Cr, Zn)
- Nondetects for di-n-butyl grout compounds in JT-112, Gaas spring

**Pit Spring 12/19/13**



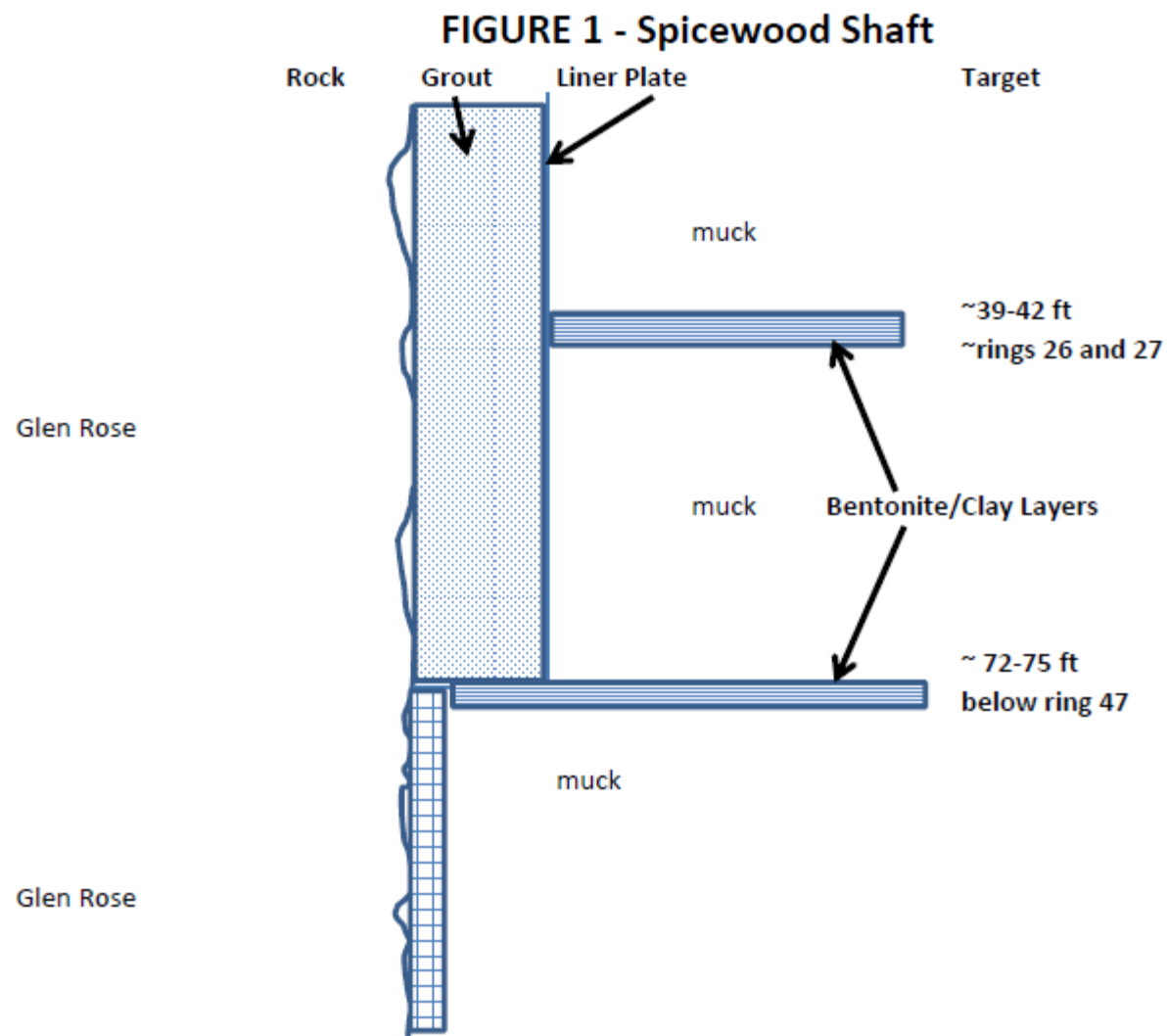


## Reach 2 tunnel

Steel pipe for Pit Spring reach: 1 of 20

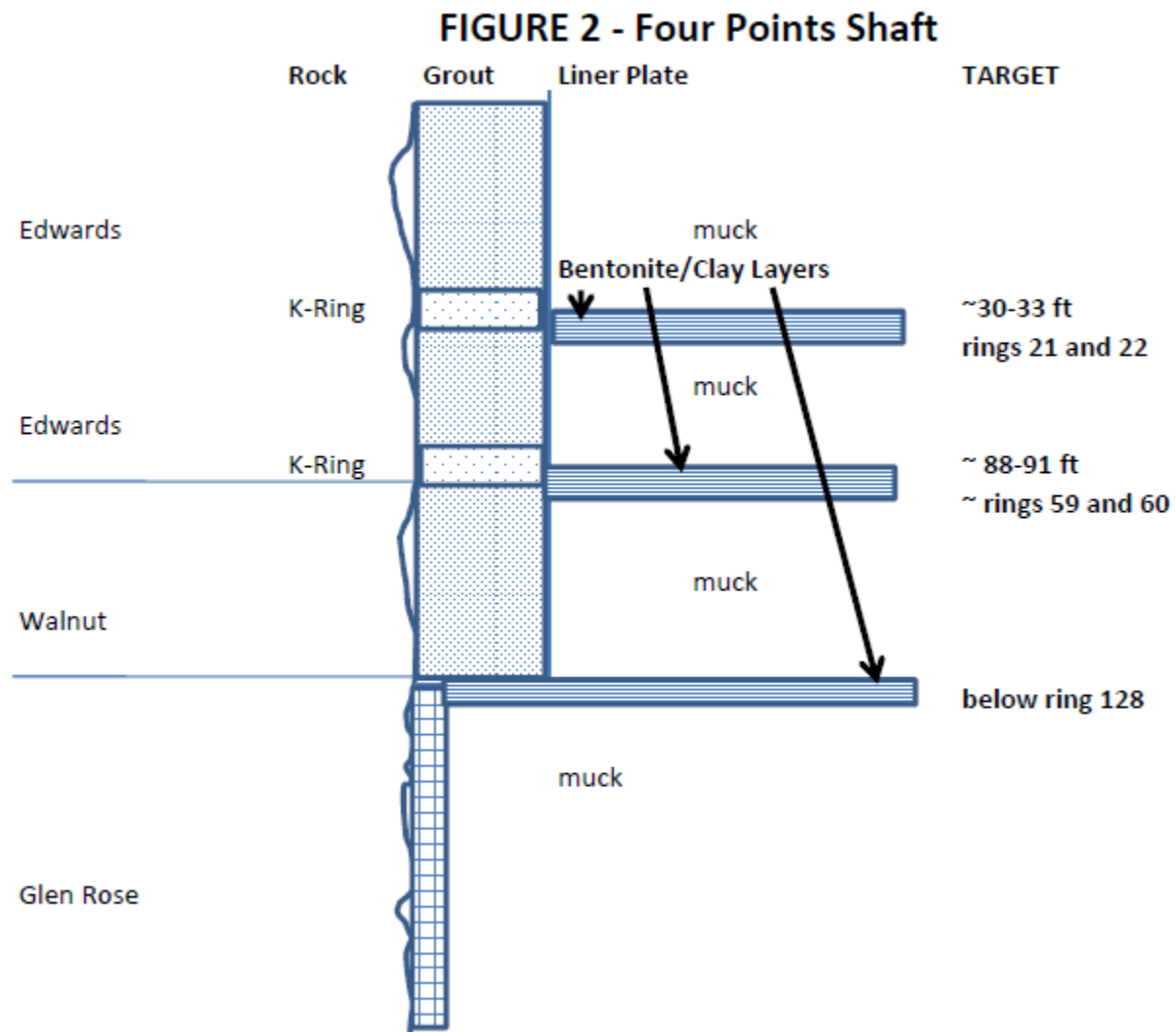
Where steel pipe will begin under  
Pit Spring

# Spicewood Shaft Backfill





# Four Pts Shaft Backfill

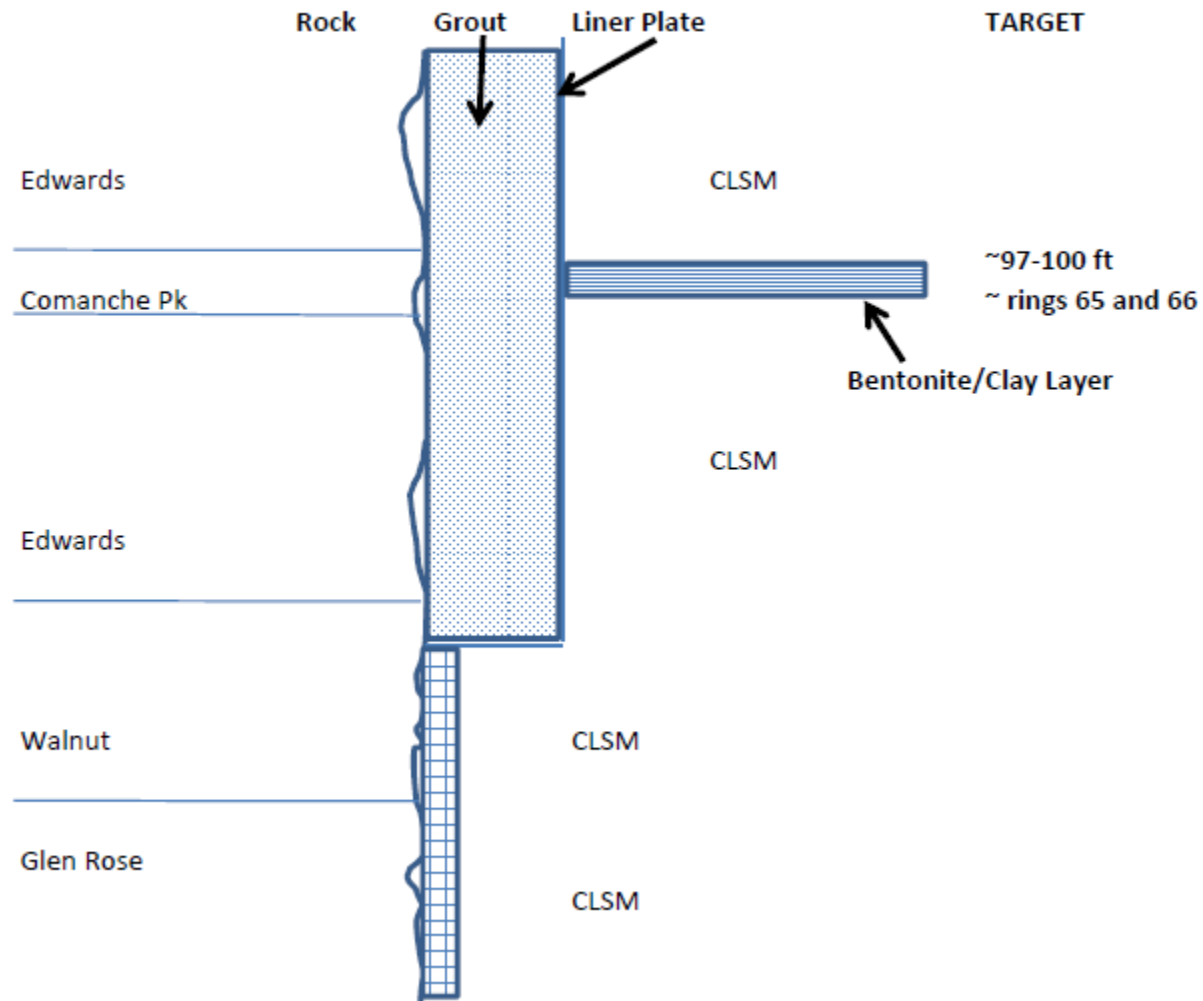






# Jollyville Shaft Backfill

FIGURE 3 - Jollyville Reservoir Shaft





Thais Perkins, Project Coordinator  
David Johns, Hydrogeologist  
Watershed Protection Department  
[thais.perkins@austintexas.gov](mailto:thais.perkins@austintexas.gov)  
[david.johns@austintexas.gov](mailto:david.johns@austintexas.gov)  
974-2291