



Bond Oversight Committee 2012 Bond Program Proposition 16

City of Austin
Austin-Travis County EMS

January 15, 2014



Proposition 16:

EMS Station Bay Expansions

- **Three EMS Stations were included in the project:**
 - EMS Station 2 – 6601 Manchaca Road
 - Built in 1990
 - EMS Station 8 – 5211 Balcones Drive
 - Built in 1997
 - EMS Station 11 – 5401 McCarty Lane
 - Built in 1987

Proposition 16: EMS Station Bay Expansions

These three station bays were built for van size ambulances

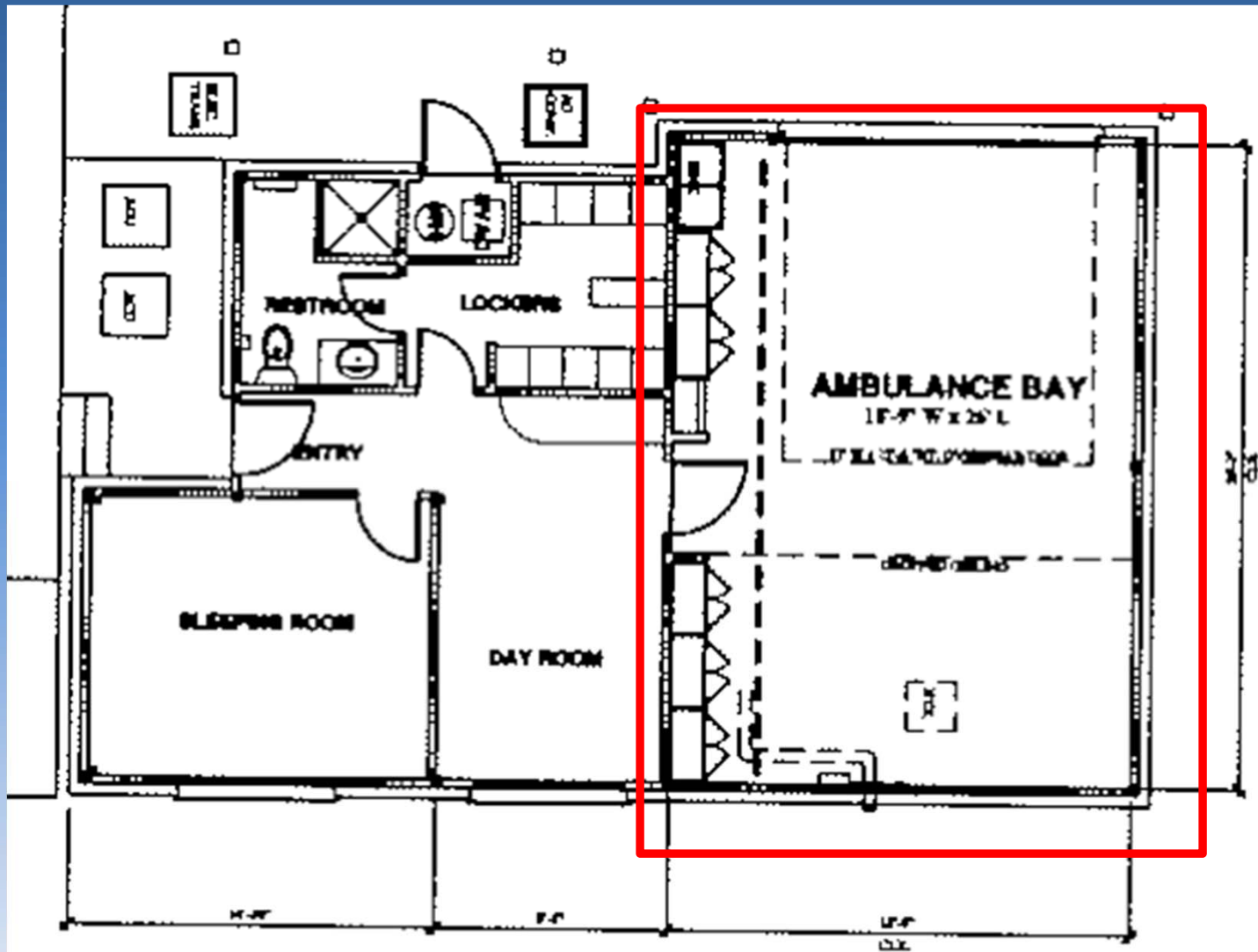


Ambulance design and size has changed dramatically to accommodate additional medical and safety equipment and new vehicle safety standards

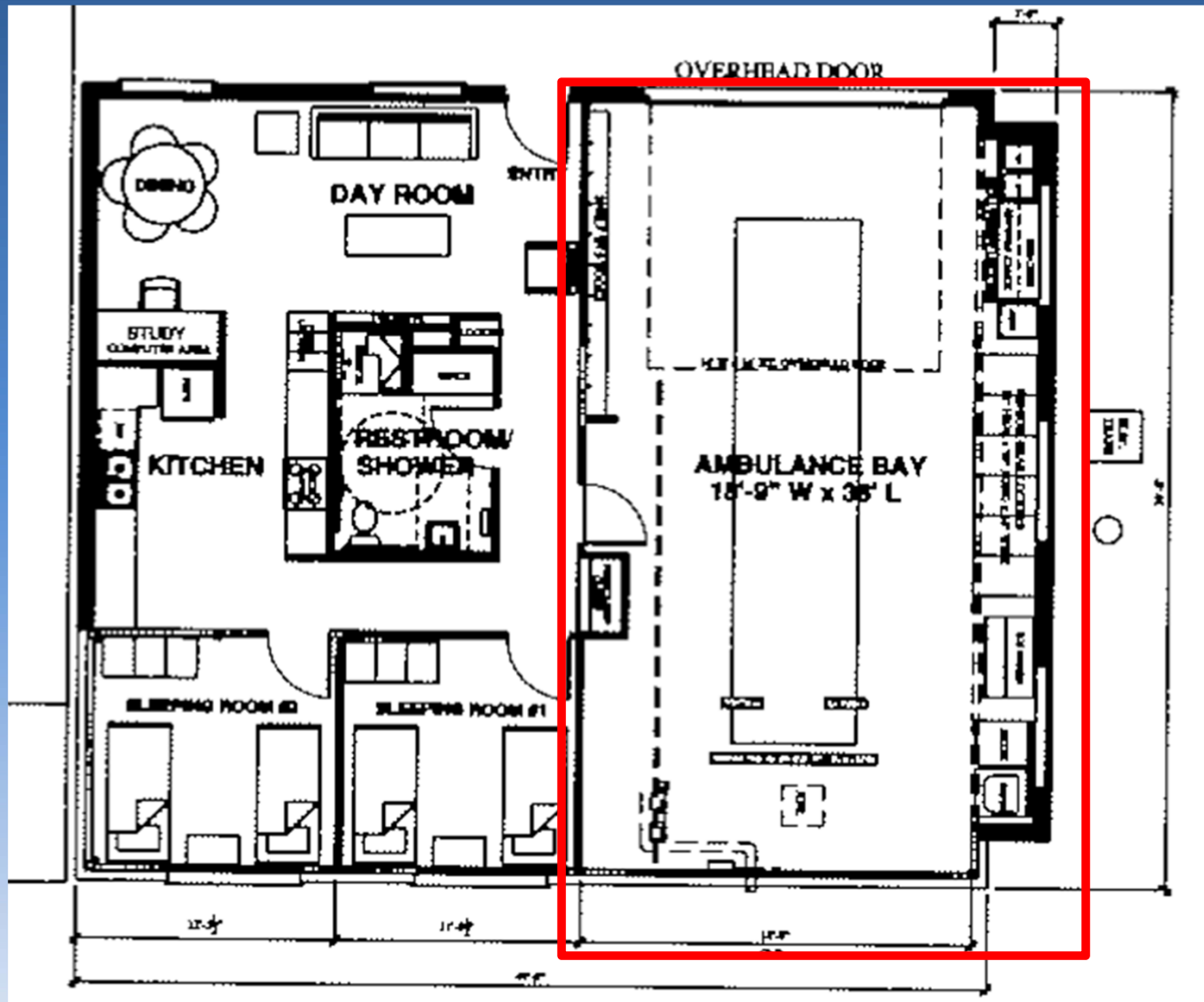
EMS Station 2 – 6601 Manchaca Road



EMS Station 2 - Existing Ambulance Bay



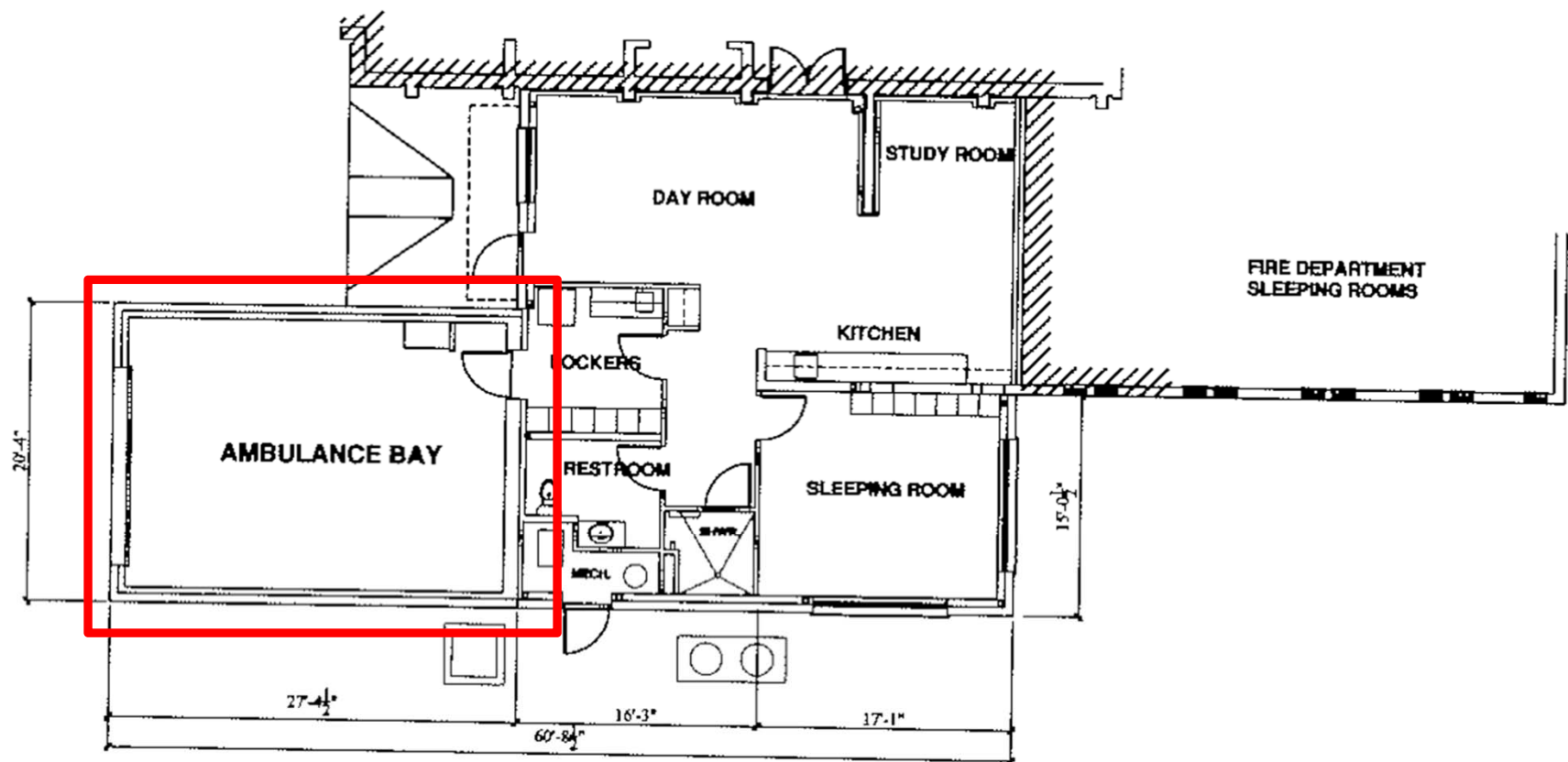
EMS Station 2 - Proposed Ambulance Bay



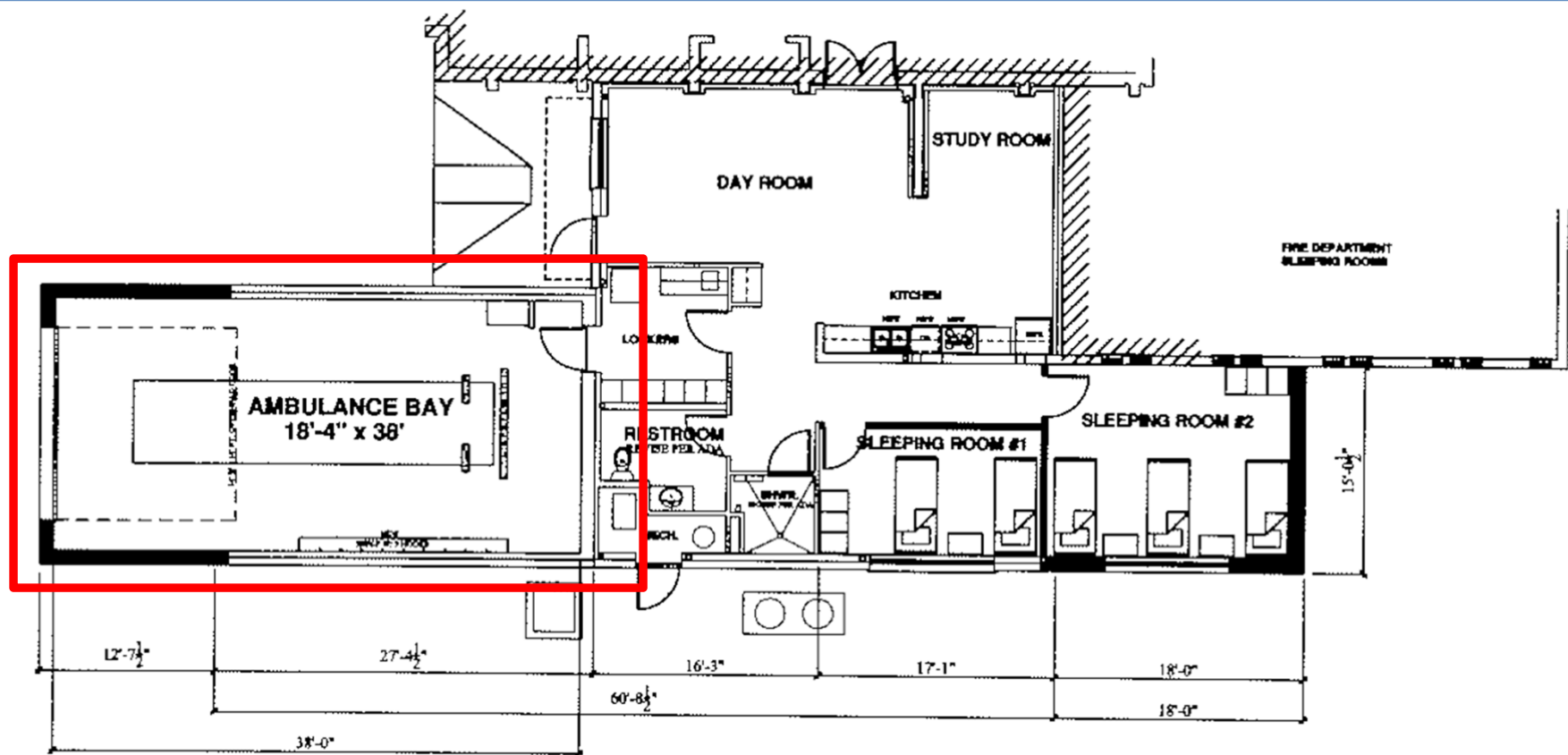
EMS Station 8 – 5211 Balcones Drive



EMS Station 8 - Existing Ambulance Bay



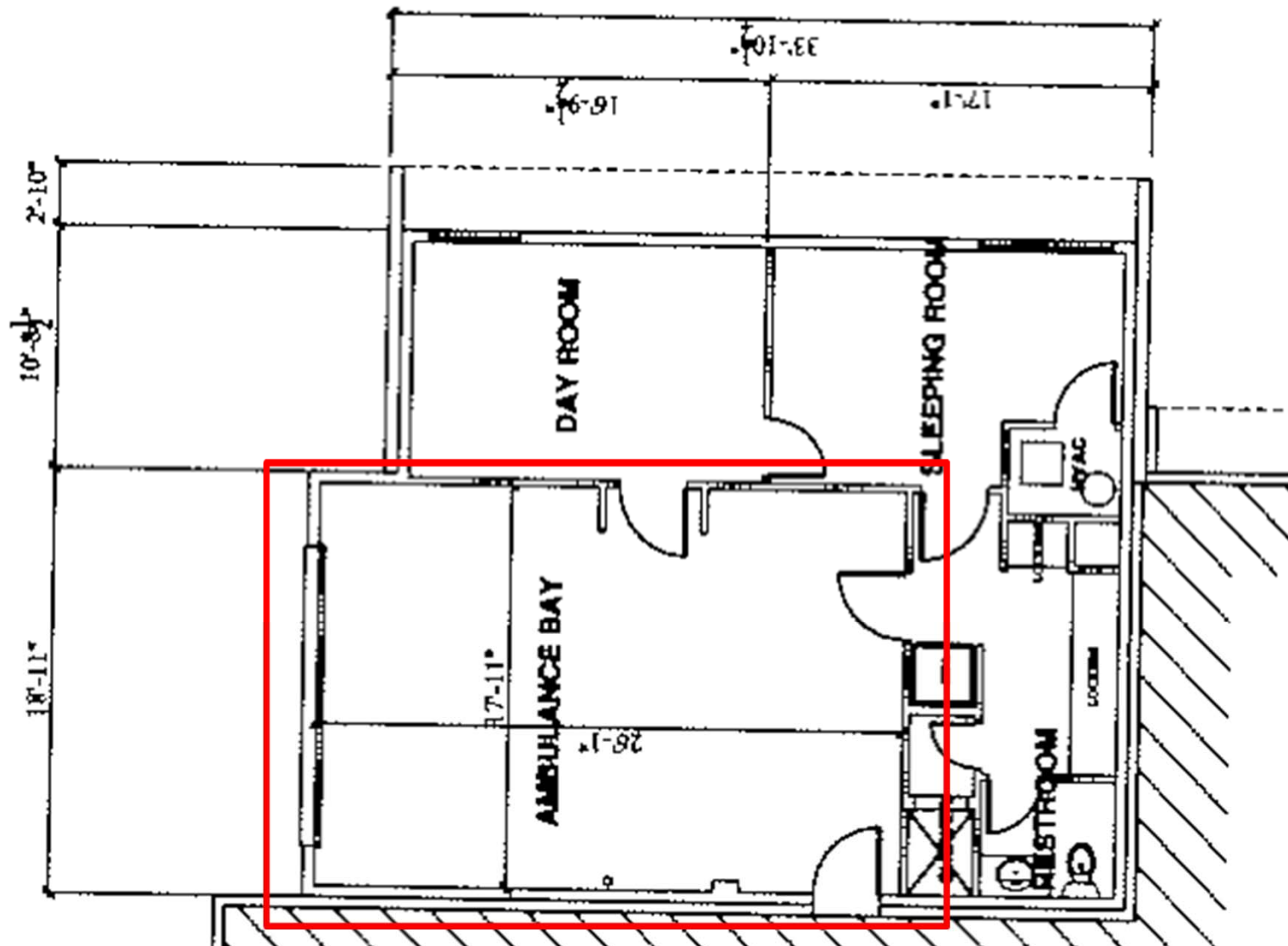
EMS Station 8 - Proposed Ambulance Bay



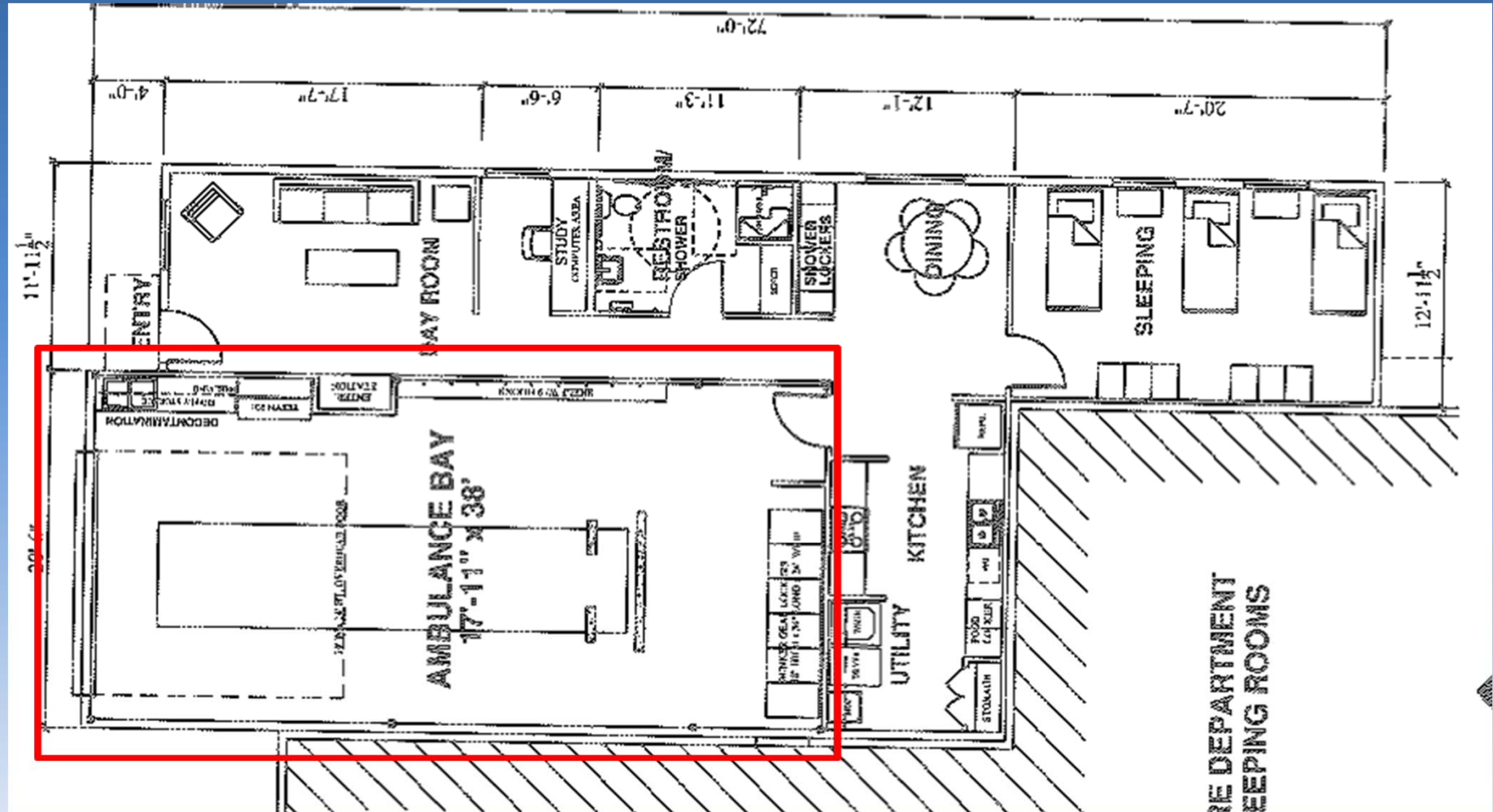
EMS Station 11 – 5401 McCarty Lane



EMS Station 11 - Existing Ambulance Bay



EMS Station 11 - Proposed Ambulance Bay



Proposition 16:

EMS Station Bay Expansions

- **A Feasibility Study has been completed by a professional services consultant**
- **A building design has been completed by an Architect firm**
 - Determine the current building and site conditions
 - Identify regulations and permit requirements
 - Create a schematic design with regards to current site, building design, condition and Water Shed and Zoning Ordinances
 - Create a cost projection for each site

Proposition 16:

EMS Station Bay Expansions

- **Station Expansion Cost**
 - EMS Station 2 – 6601 Manchaca Road
 - Projected Cost \$822,839
 - EMS Station 8 – 5211 Balcones Drive
 - Projected Cost \$573,606
 - EMS Station 11 – 5401 McCarty Lane
 - Projected Cost \$1,172,385

Proposition 16:

EMS Station Bay Expansions

- **The three station bay expansions will be considered one project**
- **Our current ambulances will not fit in the station bays of these three stations**
- **These three station bay expansions are a very high priority for the EMS Department**
- **The project is ready to proceed pending funding allocation**