

Lots in City Limits (sq. ft.)



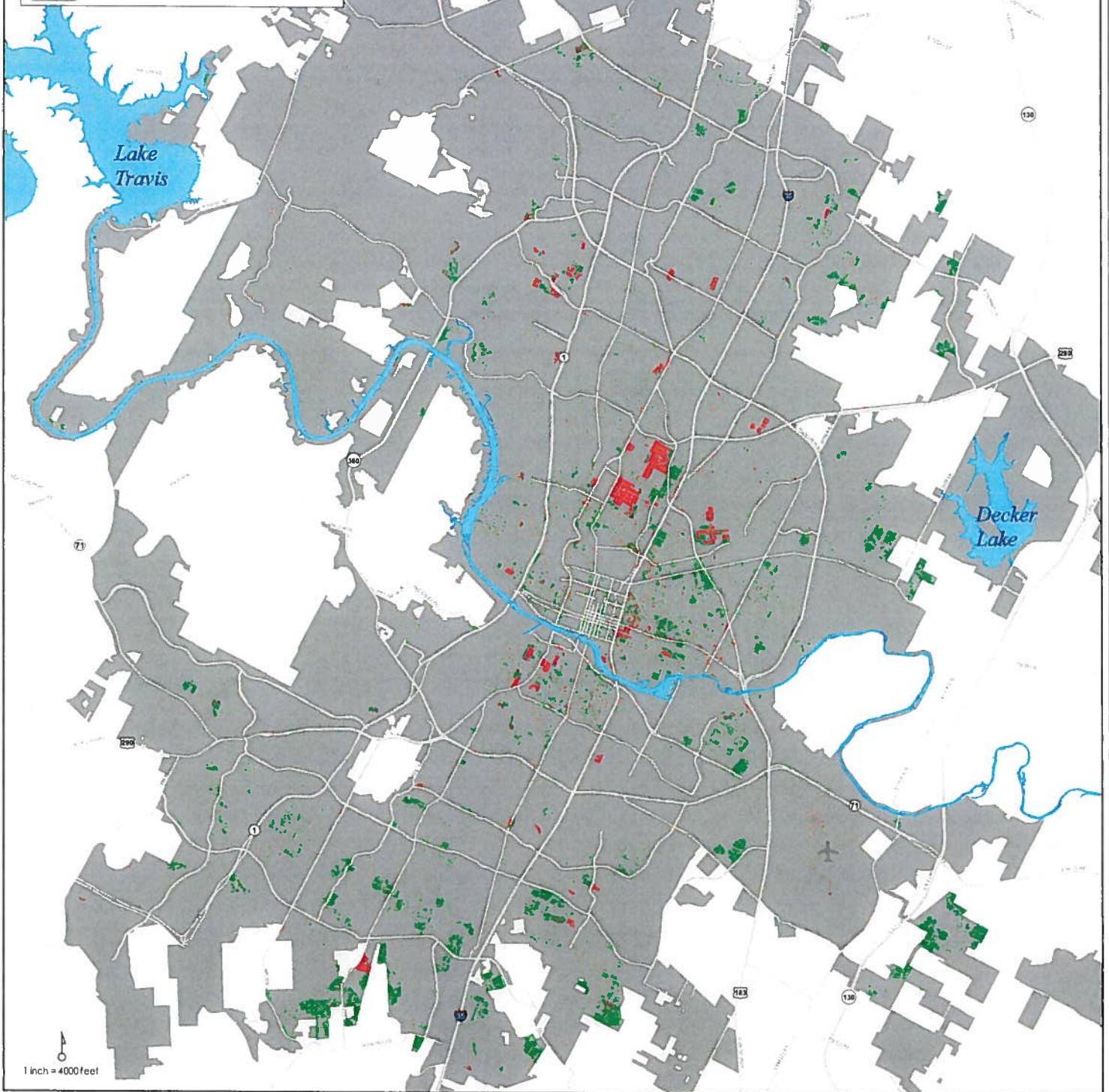
< or = 3600 (n=11,237)



> 3600 and < or = 5750 (n=20,030)



City Limit Area



Lots less than or equal to 3600 sq. ft.
and greater than 3600 to 5750 sq. ft.
WITHIN CITY LIMITS

Created: Thursday, January 30, 2014
File: jan2014_Lots3600to5750.mxd

This product is for informational purposes and may not have been prepared for or be suitable for legal, engineering, or surveying purposes. It does not represent an on-the-ground survey and represents only the approximate relative location of property boundaries.

This product has been produced by the Planning and Development Review Department for the sole purpose of geographic reference. No warranty is made by the City of Austin regarding specific accuracy or completeness.



PLANNING AND DEVELOPMENT REVIEW DEPARTMENT