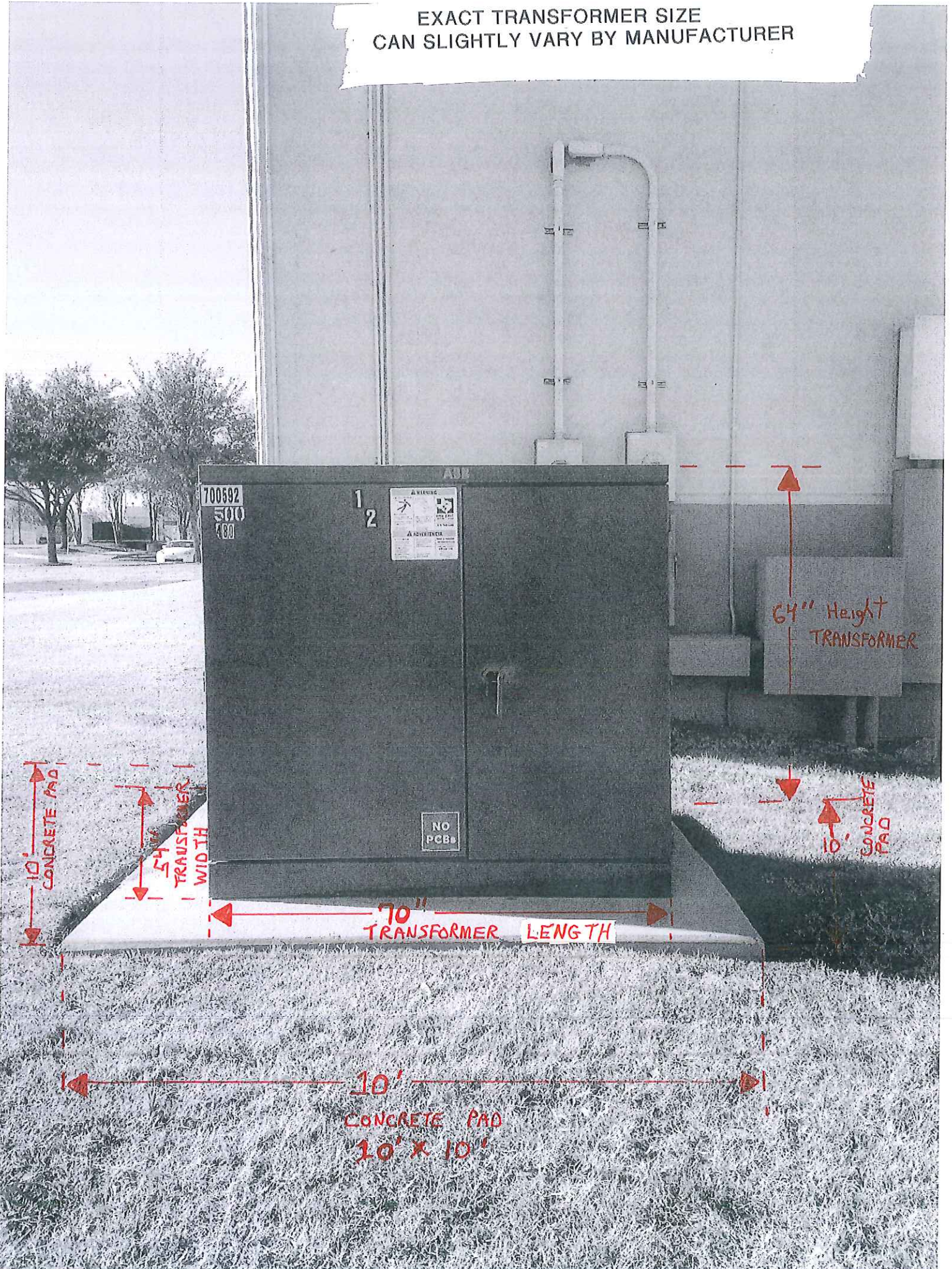





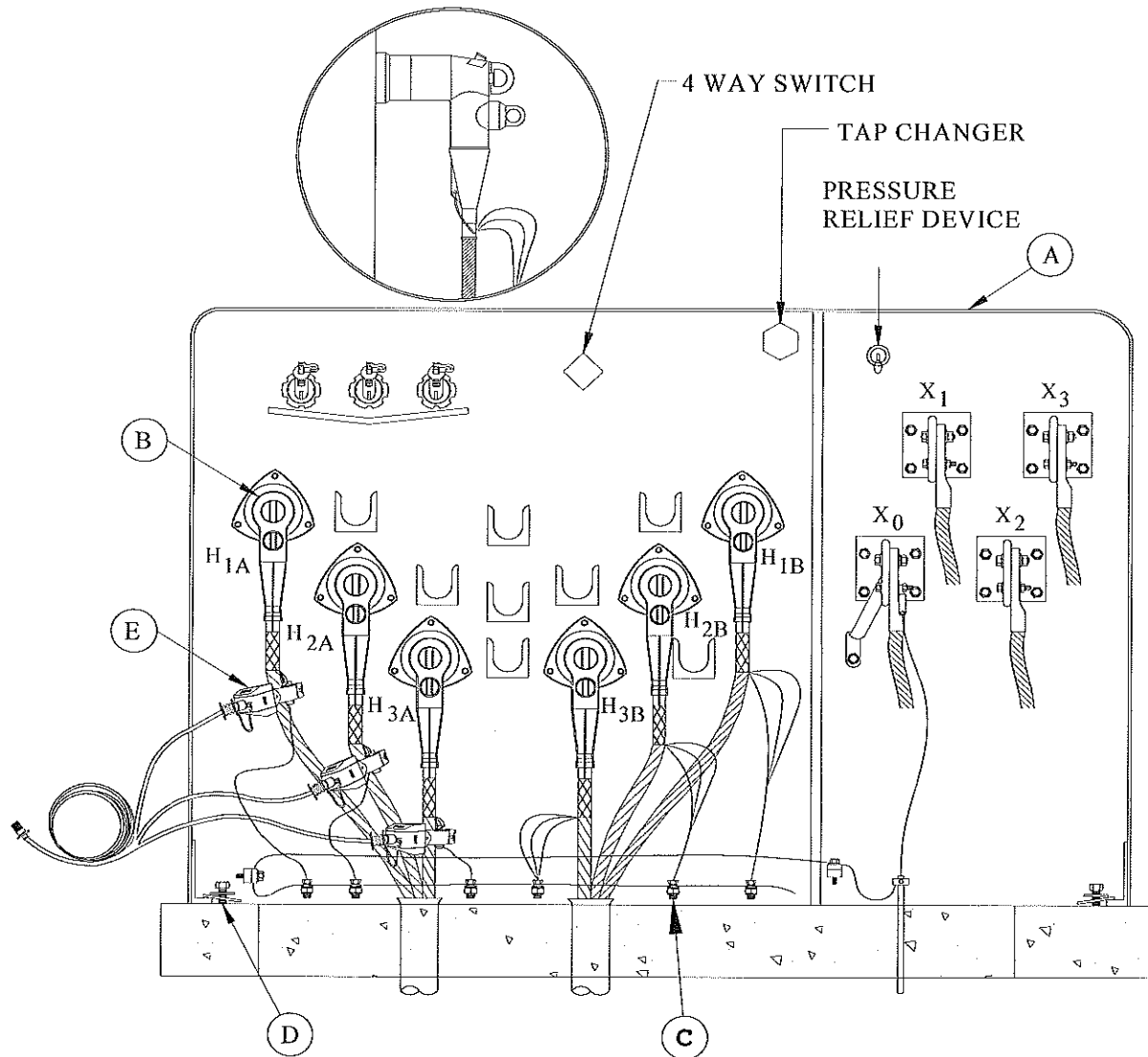
EXACT TRANSFORMER SIZE  
CAN SLIGHTLY VARY BY MANUFACTURER





1510-51	UNDERGROUND APPARATUS	
Sheet 1 of 4	TRANSFORMER - PAD MOUNT	
08/16/02	XFMR PAD MOUNT LOOP FEED 3PH 277/480V	
		Rev: 12/20/10


**1510-51 XFMR PAD MOUNT LOOP FEED 3PH 277/480V**



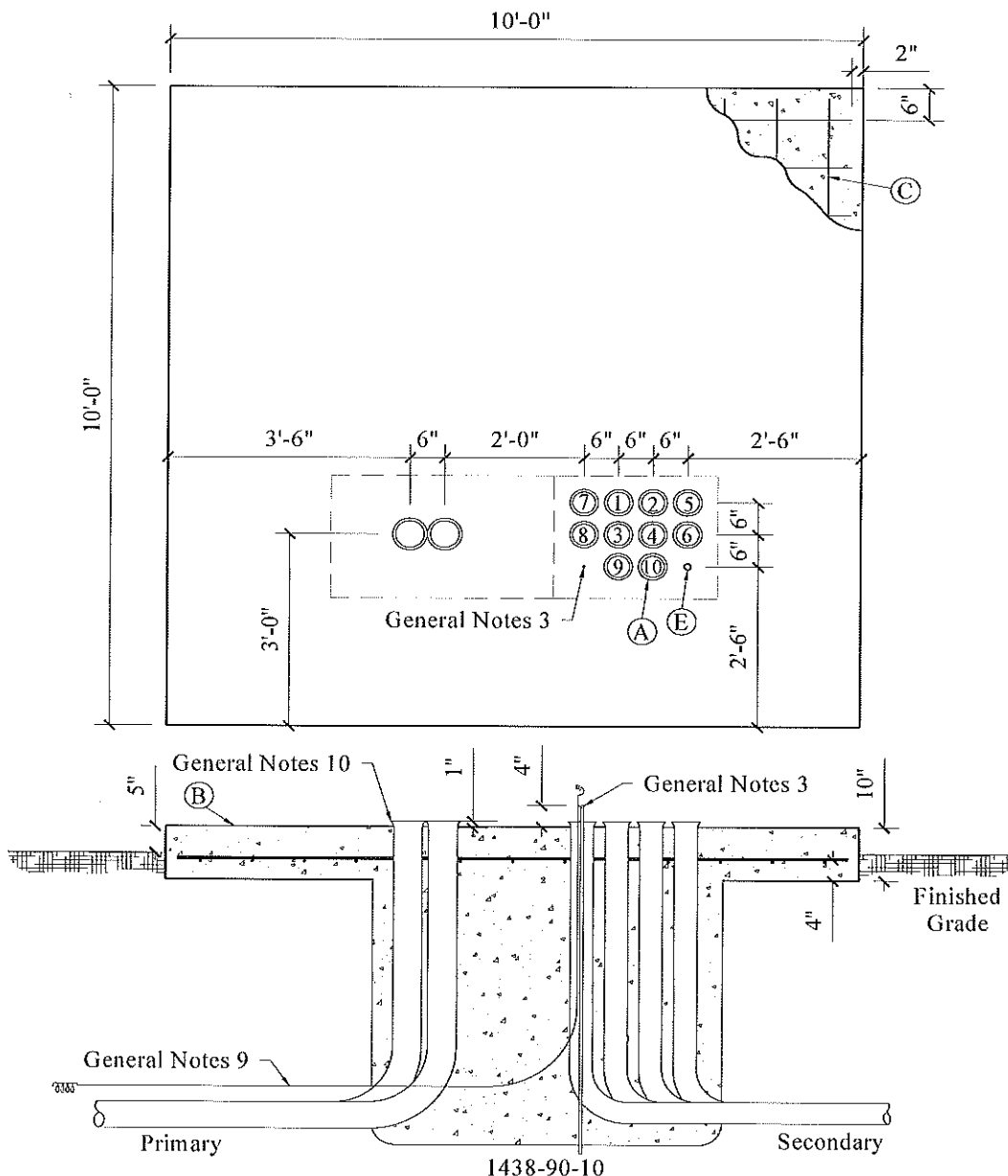
1510-51-01 1510-51-15  
 1510-51-03 1510-51-20  
 1510-51-05 1510-51-25  
 1510-51-07 1510-51-30  
 1510-51-10 1510-51-35

INSTALL ELBOWSURGE ARRESTERS ON THE FOLLOWING AS SHOWN ON PAGE 1544-30.

1. THE LAST TRANSFORMER IN A RADIAL MULTIPLE TRANSFORMER CIRCUIT SERVING COMMERCIAL LOADS
  2. ALL OPEN POINT 3PH TRANSFORMERS IN LOOP FEED CIRCUIT.
- ALLOW SUFFICIENT LENGTH OF CONCENTRIC NEUTRAL WIRES AND ARRESTER GROUND LEAD TO ENSURE FREE MOVEMENT OF ELBOWS DURING HOT-STICK OPERATIONS.

1438-90	CIVIL	
Sheet 1 of 2	PADS, CLEARANCES AND BARRIERS	
03/06/06	PAD CIP 3PH XFMR 10FT X 10FT (75-2500KVA)	
		Rev: 04/25/13

**1438-90 PAD CIP 3PH XFMR 10FT X 10FT (75-2500KVA)**



**NOTES:**

- A. FOR ALL 3 PHASE TRANSFORMER SIZES, A MAXIMUM OF 10 CONDUITS AND 10 SETS OF CABLE PER PHASE, AS SPECIFIED BY AE DISTRIBUTION DESIGN, CAN BE INSTALLED IN THE ARRANGEMENT AND NUMERICAL ORDER AS SHOWN.
- B. TOP OF SLAB 5" ABOVE FINISHED GRADE.
- C. 1/2 IN. GRADE 60 REINFORCED STEEL RODS 9" ON CENTER.
- D. REFER TO GENERAL NOTES ON SECTION 1438-55 FOR DETAILS ON TRANSFORMER CONCRETE PAD CONSTRUCTION.
- E. WHEN METERING AT THE TRANSFORMER, A 1.25" CONDUIT SHALL BE INSTALLED.