



MEDIA CONTACT:

Carolyn Perez, Public Information Officer, Public Works

512 974-7139 (day)

Carolyn.Perez@austintexas.gov

Northern Walnut Creek Trail, Phase 1

FACT SHEET

Objective:

Create a segment of the Walnut Creek Trail System, from Balcones Park at Amherst and Duval Lane to Walnut Creek Metro Park, that will eventually connect with the Southern Walnut Creek Trail and the Austin to Manor Trail (currently under construction). This trail network will provide a multi-use, alternative transportation route for cyclists as well as a recreational asset for walkers, runners and for family recreation.

Background:

The Northern Walnut Creek Trail, Phase 1 is a significant part of the Parks and Recreation Department's (PARD) Walnut Creek Trail System, which will eventually connect north Austin with the Colorado River. The 3.2 mile long Northern Walnut Creek Trail, Phase 1 will eventually extend the northern segment of the Walnut Creek Trail system to IH-35 with the construction of the 1.7 mile Phase 2, which is now in preliminary design.

The Northern Walnut Creek Trail, Phase 1 will be 10 feet wide concrete with 2 feet wide shoulders, including 4 trailheads and 9 creek crossings, which include bridges and low water crossings. The trail follows an east-west route from the western edge of Balcones Park along Amherst Drive along and across Walnut Creek to the western edge of Walnut Creek Metro Park. There will be major trailheads at Balcones Park, Walnut Creek Metro Park and Gracywoods Park.

Funding for the trail comes partially from the American Resource Recovery Act and is administered by the Texas Department of Transportation (TxDOT). The trail will conform to American Association of State Highway and Transportation Officials (AASHTO) guidelines for construction. TxDOT is providing a grant in the amount of \$1.996 million and the City is providing a match as outlined below:

Funding Source	Amount
TXDOT Grant (ARRA)	\$ 1,996,261.00
1998 GO Bonds P2 (Parks)	\$ 3,514,014.00
2006 GO Bonds P3 (Parks)	\$ 1,713,827.00
2006 GO Bonds P1 (Public Works)	\$ 410,000.00
Parkland Dedication	\$ 230,000.00
CIP Contingency Reserve	\$ 1,198,850.00
Total	\$ 9,062,952.00

Project Dates:

June 2012	Stakeholder meetings held
December 2012	Design phase completed
April 2013	Construction start date
September 2013	Estimated completion date

Financial figures/Projected Costs:

Low Bid or \$5,643,325.98 plus 5% contingency of \$282,166.00 for a total of \$5,925,491.98 for council approval. The project is expected to be completed within the approved budget.

Project lead:

Richard Duane (PWD), Project Manager: 974-7730

Robert Brennes, Sponsor Department (PARD) Representative: 974-9472

Public Works Update February 2014

Northern Walnut Creek Trail - Phase 1 5261.001

This project consists of the design and construction of a new trail on the Walnut Creek Greenbelt. The trail will connect Balcones District Park to Walnut Creek Metropolitan Park. Construction will consist of a 10' wide concrete trail with 2' shoulders. The trail will have approximately 9 creek crossings and 4 trail heads.

Completed work

- Balcones Park portion of the Trail has been completed excluding punch list items.
- The Trail segments under MOPAC within TXDOT Right of Way have been completed excluding punch list items.
- The City has acquired General Permit 2 for work within Walnut Creek Metro Park area.
- The City has met with Trail Riders and gathered input for ongoing trail closures.

Ongoing work

- Trail construction is now within the areas of Walnut Creek Metro Park. Clearing and grubbing operations are ongoing in preparation for Bridge construction. Bridge 9 will be constructed first and then Bridges 8A and 8B. The current construction calls for placement of the bridges followed by retaining wall construction and then trail placement. As opportunities arise, the City will reopen closed portions of the Metro Park Trail that will not place riders and construction crews in conflict.
- The Consultant Engineers are currently working with City personnel on a site plan for those areas between Balcones and Walnut Creek Park.
- The City will provide the public with additional opportunities to comment and provide input on the redesign at future neighborhood meetings as soon as available.
- The current construction schedule is under review because of additional design and permit issues. The project is expected to be complete in late 2014.

Items of interest

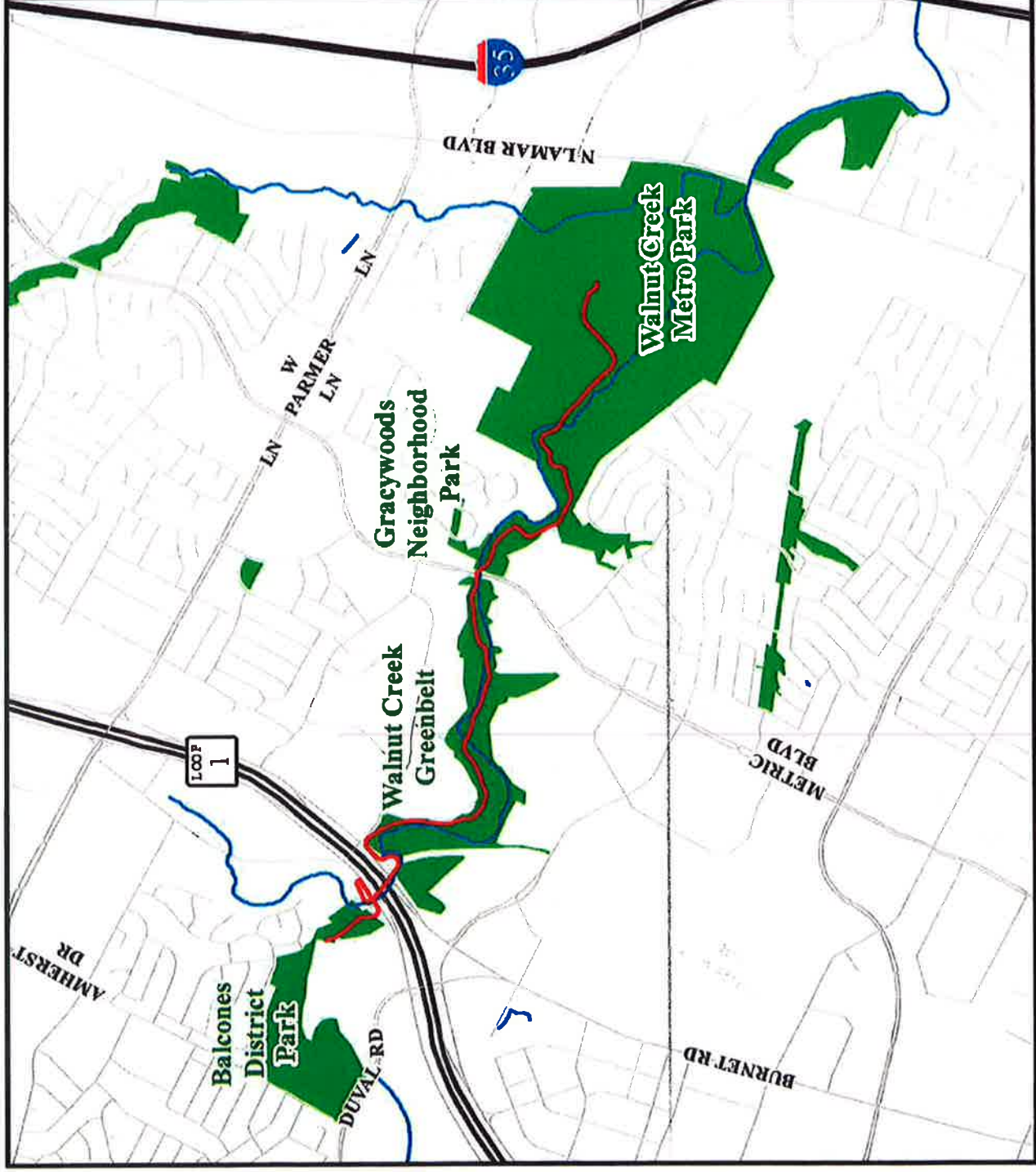
- The contractor was directed to remove a wooden structure along Metric in response to complaints to Councilman Riley from Bill Glass. Contractor pulled off current work area and cost added to Contract (\$13,000). Item closed.
- The Consultant Engineer has spent and continues to work through issues with the hydraulic model. As costs escalate, decisions will be made on a case by case basis regarding removal of trail items such as parking lots, stream bank stabilization, and other items to reduce spending.
- ARRA funding (\$1.9 Million) is on target for recovery ahead of all deadlines.



Legend

- N Walnut Creek Trail: Phase 1
- Creeks
- City of Austin Parks

This product is for informational purposes and may not have been prepared for or be suitable for legal, engineering, or surveying purposes. It does not represent an on-the-ground survey and represents only the approximate relative location of property boundaries. This product has been produced by the Parks and Recreation Department for the sole purpose of geographic reference. No warranty is made by the City of Austin regarding specific accuracy or completeness.



23 October 2012 AH

Northern Walnut Creek Trail: Phase 1