



SOUTH ELEVATION (EXISTING)

1/8"=1'-0"

610 West Lynn Avenue  
Certificate of  
Appropriateness  
Submittal - 03.10.2014



SOUTH ELEVATION (W/ PROPOSED ENTRY APPROACH)

1/8"=1'-0"

Architects  
Clayton&Little  
1001 East 8<sup>th</sup> Street  
Austin Texas 78702

**PRELIMINARY**  
**NOT FOR CONSTRUCTION**  
This drawing was prepared under  
the supervision of Paul Clayton.  
It is not to be used for regulatory  
approval, permitting, or  
construction purposes.

WEST LYNN RESIDENCE  
610 W. LYNN ST. AUSTIN, TX 78703

PRELIMINARY CERTIFICATE OF APPROPRIATENESS PRESENTATION

ISSUE DATE: 02/10/14

1

SOUTHERN VIEW





EXISTING SITE AERIAL PHOTO

## WEST LYNN RESIDENCE

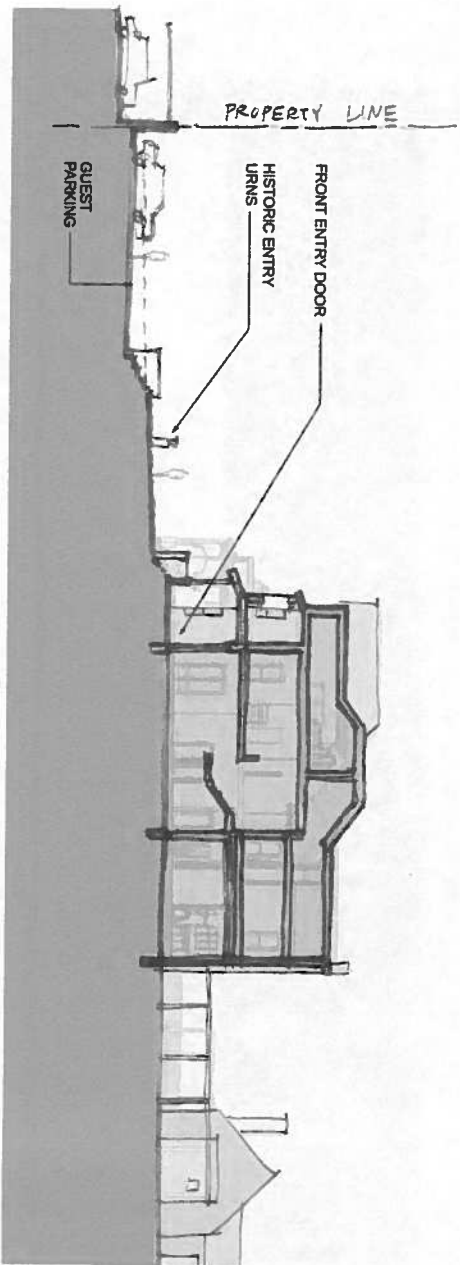
610 W. LYNN ST. AUSTIN, TX 78703

CERTIFICATE OF APPROPRIATENESS SUBMITTAL

Architects  
**Clayton & Little**  
1001 East 8th Street  
Austin Texas 78702

**PRELIMINARY**  
**NOT FOR CONSTRUCTION**  
This drawing was prepared under  
the supervision of Paul Clayton.  
It is not to be used for regulatory  
approval, permitting, or  
construction purposes.





Architects  
Clayton&Little  
1001 East 8<sup>th</sup> Street  
Austin Texas 78702

**PRELIMINARY  
NOT FOR CONSTRUCTION**  
This drawing was prepared under  
the supervision of the architect.  
It is not to be used for regulatory  
approval, permitting, or  
construction purposes.

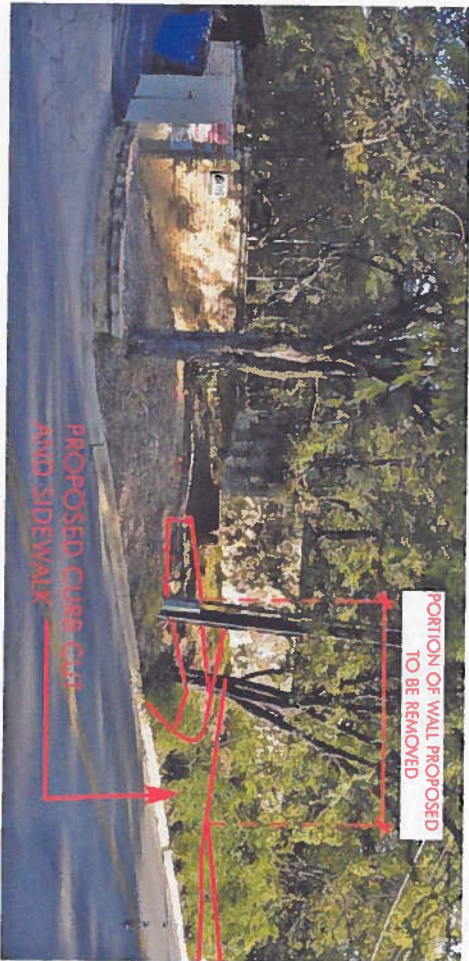
**WEST LYNN RESIDENCE**  
610 W. LYNN ST. AUSTIN, TX 78703

CERTIFICATE OF APPROPRIATENESS SUBMITTAL





EXISTING STONE URNS FROM FRONT DOOR



SOUTHEAST CORNER OF STONE WALL (EXISTING)



Architects  
**Clayton Little**  
1001 East 8th Street  
Austin Texas 78702

**PRELIMINARY**  
**NOT FOR CONSTRUCTION**  
This drawing was prepared under  
the supervision of the Architect.  
It is not to be used for regulatory  
approval, permitting, or  
construction purposes.

**WEST LYNN RESIDENCE**  
610 W. LYNN ST. AUSTIN, TX 78703

CERTIFICATE OF APPROPRIATENESS SUBMITTAL





CURRENT APPROACH FROM EXISTING DRIVE



Architects  
**Clayton & Little**  
1001 East 8th Street  
Austin Texas 78702

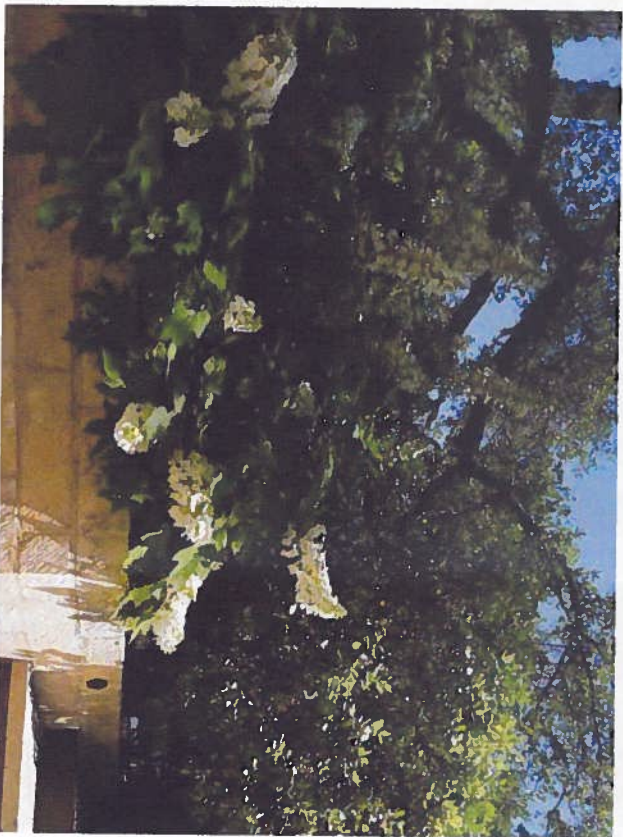
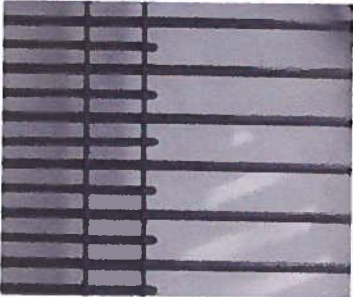
**PRELIMINARY  
NOT FOR CONSTRUCTION**  
This drawing was prepared under  
the supervision of the architect.  
It is not to be used for regulatory  
approval, permitting, or  
construction purposes.

**WEST LYNN RESIDENCE**

610 W. LYNN ST. AUSTIN, TX 78703

CERTIFICATE OF APPROPRIATENESS SUBMITTAL



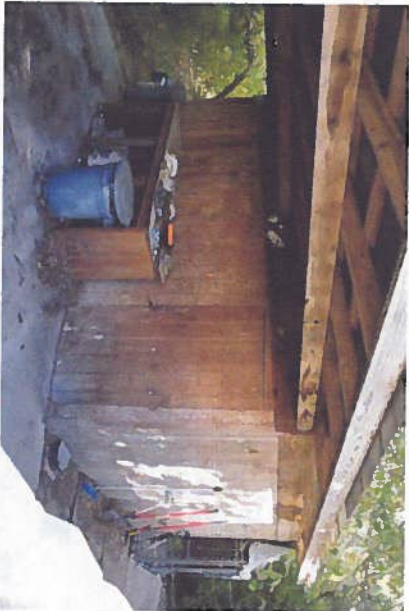


mark  
word  
DESIGN

YNN  
OPTION 1

7





EXISTING CARPORT/STORAGE SHED. (PROPOSED FOR DEMOLITION)



EXISTING VIEW OF CARPORT FROM WEST LYNN



Architects  
**Clayton&Little**  
1001 East 8th Street  
Austin Texas 78702

**PRELIMINARY**  
**NOT FOR CONSTRUCTION**  
This drawing was prepared under  
the supervision of Paul Clayton.  
It is not to be used for regulatory  
approval, permitting, or  
construction purposes.

**WEST LYNN RESIDENCE**  
610 W. LYNN ST. AUSTIN, TX 78703

CERTIFICATE OF APPROPRIATENESS SUBMITTAL





EXISTING POOL



VIEW OF EXISTING FROM SOUTHWEST



Architects  
**Clayton&Little**  
1001 East 8th Street  
Austin Texas 78702

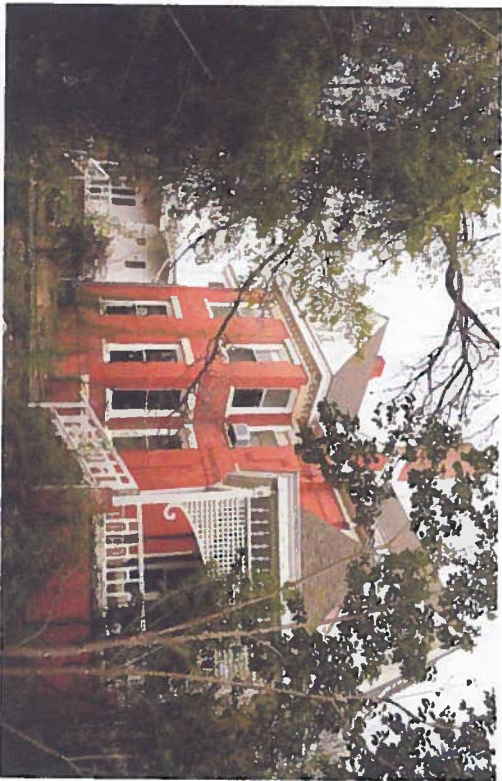
**PRELIMINARY**  
**NOT FOR CONSTRUCTION**  
This drawing was prepared under  
the supervision of Paul Clayton  
It is not to be used for regulatory  
approval, permitting, or  
construction purposes.

## WEST LYNN RESIDENCE

610 W. LYNN ST. AUSTIN, TX 78703

CERTIFICATE OF APPROPRIATENESS SUBMITTAL





EXISTING VIEW FROM SOUTHWEST SIDE YARD



EXISTING VIEW FROM NORTHWEST (FROM REAR OF PROPERTY)



TOP OF REAR FENCE  
SHOWN DASHED



Architects  
**Clayton Little**  
1001 East 8<sup>th</sup> Street  
Austin Texas 78702

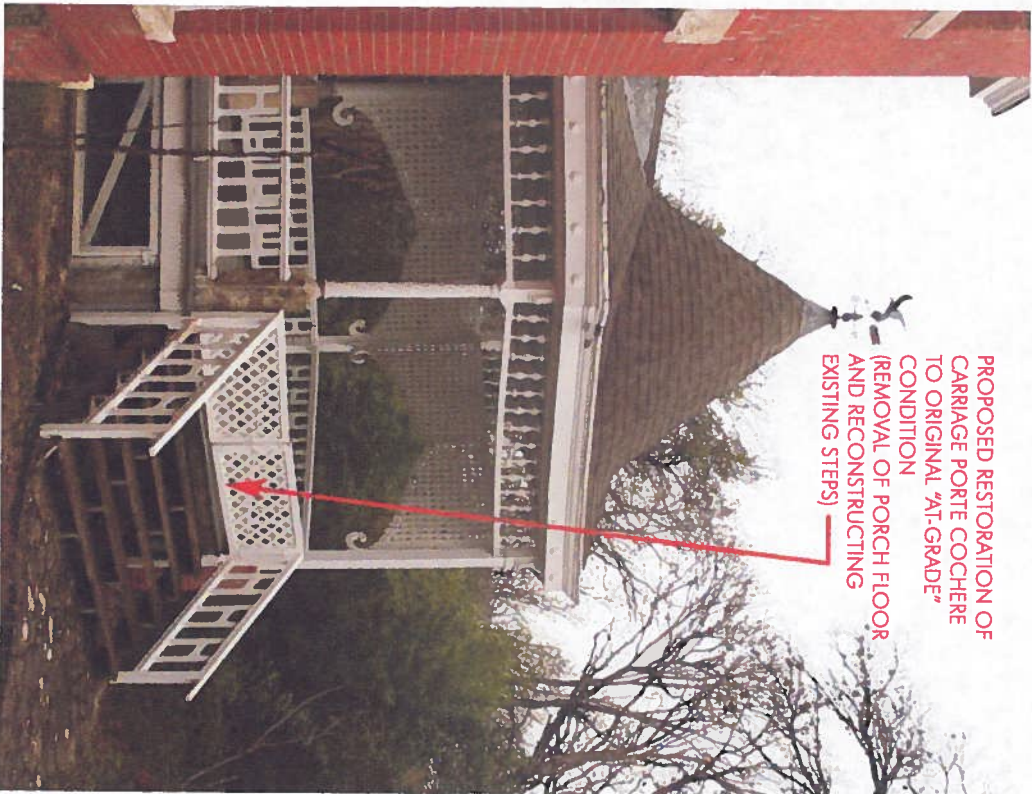
**PRELIMINARY**  
**NOT FOR CONSTRUCTION**  
This drawing was prepared under  
the supervision of Paul Clayton.  
It is not to be used for regulatory  
approval, permitting, or  
construction purposes.

# WEST LYNN RESIDENCE

610 W. LYNN ST. AUSTIN, TX 78703

CERTIFICATE OF APPROPRIATENESS SUBMITTAL







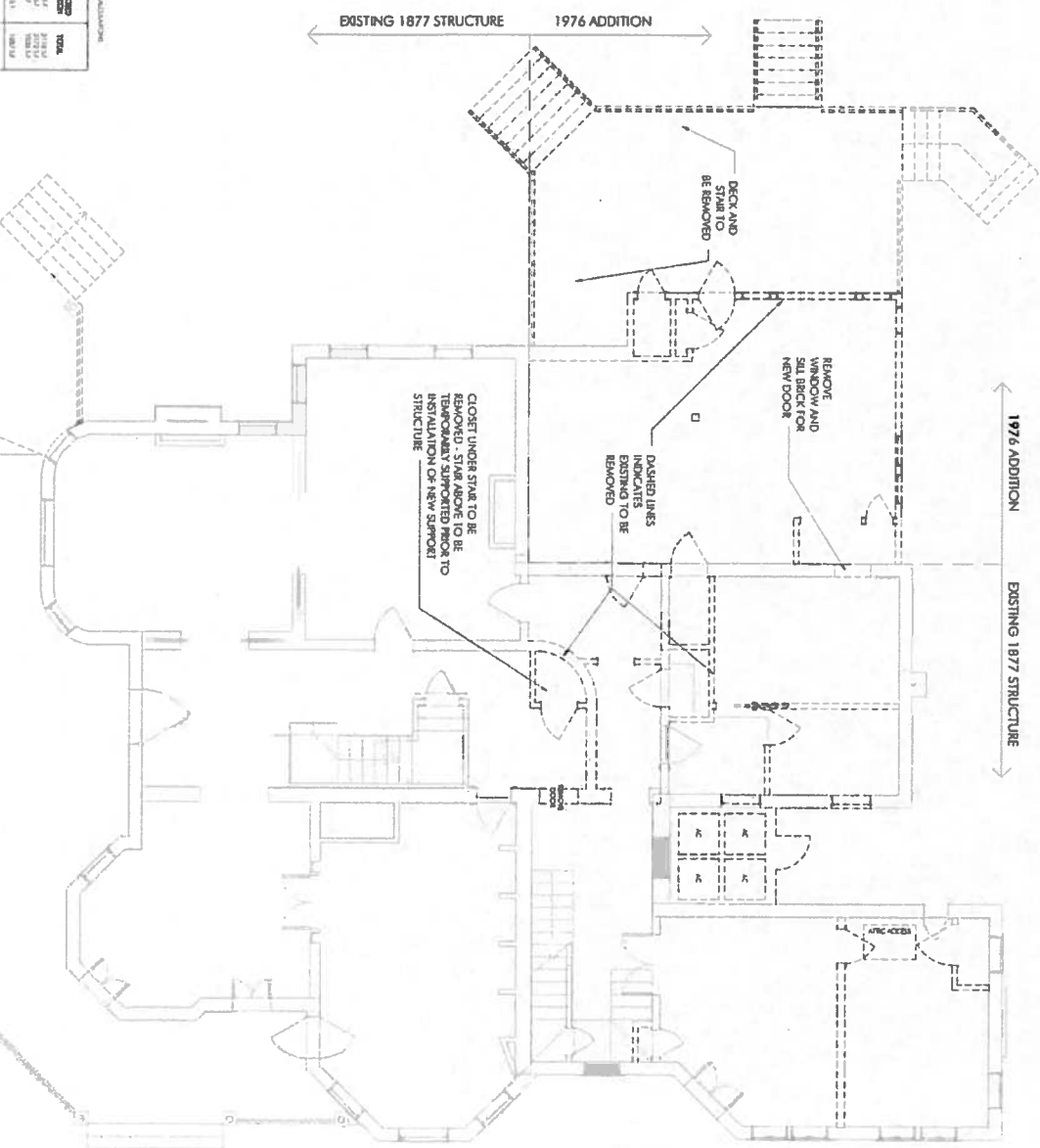








	1974-1975 1976-1977 1978-1979 1980-1981 1982-1983 1984-1985 1986-1987 1988-1989 1990-1991 1992-1993 1994-1995 1996-1997 1998-1999 2000-2001 2002-2003 2004-2005 2006-2007 2008-2009 2010-2011 2012-2013 2014-2015 2016-2017 2018-2019 2020-2021 2022-2023 2024-2025 2026-2027 2028-2029 2030-2031 2032-2033 2034-2035 2036-2037 2038-2039 2040-2041 2042-2043 2044-2045 2046-2047 2048-2049 2050-2051 2052-2053 2054-2055 2056-2057 2058-2059 2060-2061 2062-2063 2064-2065 2066-2067 2068-2069 2070-2071 2072-2073 2074-2075 2076-2077 2078-2079 2080-2081 2082-2083 2084-2085 2086-2087 2088-2089 2090-2091 2092-2093 2094-2095 2096-2097 2098-2099 2100-2101 2102-2103 2104-2105 2106-2107 2108-2109 2110-2111 2112-2113 2114-2115 2116-2117 2118-2119 2120-2121 2122-2123 2124-2125 2126-2127 2128-2129 2130-2131 2132-2133 2134-2135 2136-2137 2138-2139 2140-2141 2142-2143 2144-2145 2146-2147 2148-2149 2150-2151 2152-2153 2154-2155 2156-2157 2158-2159 2160-2161 2162-2163 2164-2165 2166-2167 2168-2169 2170-2171 2172-2173 2174-2175 2176-2177 2178-2179 2180-2181 2182-2183 2184-2185 2186-2187 2188-2189 2190-2191 2192-2193 2194-2195 2196-2197 2198-2199 2200-2201 2202-2203 2204-2205 2206-2207 2208-2209 2210-2211 2212-2213 2214-2215 2216-2217 2218-2219 2220-2221 2222-2223 2224-2225 2226-2227 2228-2229 2230-2231 2232-2233 2234-2235 2236-2237 2238-2239 2240-2241 2242-2243 2244-2245 2246-2247 2248-2249 2250-2251 2252-2253 2254-2255 2256-2257 2258-2259 2260-2261 2262-2263 2264-2265 2266-2267 2268-2269 2270-2271 2272-2273 2274-2275 2276-2277 2278-2279 2280-2281 2282-2283 2284-2285 2286-2287 2288-2289 2290-2291 2292-2293 2294-2295 2296-2297 2298-2299 2300-2301 2302-2303 2304-2305 2306-2307 2308-2309 2310-2311 2312-2313 2314-2315 2316-2317 2318-2319 2320-2321 2322-2323 2324-2325 2326-2327 2328-2329 2330-2331 2332-2333 2334-2335 2336-2337 2338-2339 2340-2341 2342-2343 2344-2345 2346-2347 2348-2349 2350-2351 2352-2353 2354-2355 2356-2357 2358-2359 2360-2361 2362-2363 2364-2365 2366-2367 2368-2369 2370-2371 2372-2373 2374-2375 2376-2377 2378-2379 2380-2381 2382-2383 2384-2385 2386-2387 2388-2389 2390-2391 2392-2393 2394-2395 2396-2397 2398-2399 2400-2401 2402-2403 2404-2405 2406-2407 2408-2409 2410-2411 2412-2413 2414-2415 2416-2417 2418-2419 2420-2421 2422-2423 2424-2425 2426-2427 2428-2429 2430-2431 2432-2433 2434-2435 2436-2437 2438-2439 2440-2441 2442-2443 2444-2445 2446-2447 2448-2449 2450-2451 2452-2453 2454-2455 2456-2457 2458-2459 2460-2461 2462-2463 2464-2465 2466-2467 2468-2469 2470-2471 2472-2473 2474-2475 2476-2477 2478-2479 2480-2481 2482-2483 2484-2485 2486-2487 2488-2489 2490-2491 2492-2493 2494-2495 2496-2497 2498-2499 2500-2501 2502-2503 2504-2505 2506-2507 2508-2509 2510-2511 2512-2513 2514-2515 2516-2517 2518-2519 2520-2521 2522-2523 2524-2525 2526-2527 2528-2529 2530-2531 2532-2533 2534-2535 2536-2537 2538-2539 2540-2541 2542-2543 2544-2545 2546-2547 2548-2549 2550-2551 2552-2553 2554-2555 2556-2557 2558-2559 2560-2561 2562-2563 2564-2565 2566-2567 2568-2569 2570-2571 2572-2573 2574-2575 2576-2577 2578-2579 2580-2581 2582-2583 2584-2585 2586-2587 2588-2589 2590-2591 2592-2593 2594-2595 2596-2597 2598-2599 2600-2601 2602-2603 2604-2605 2606-2607 2608-2609 2610-2611 2612-2613 2614-2615 2616-2617 2618-2619 2620-2621 2622-2623 2624-2625 2626-2627 2628-2629 2630-2631 2632-2633 2634-2635 2636-2637 2638-2639 2640-2641 2642-2643 2644-2645 2646-2647 2648-2649 2650-2651 2652-2653 2654-2655 2656-2657 2658-2659 2660-2661 2662-2663 2664-2665 2666-2667 2668-2669 2670-2671 2672-2673 2674-2675 2676-2677 2678-2679 2680-2681 2682-2683 2684-2685 2686-2687 2688-2689 2690-2691 2692-2693 2694-2695 2696-2697 2698-2699 2700-2701 2702-2703 2704-2705 2706-2707 2708-2709 2710-2711 2712-2713 2714-27
--	-------------------------------------------------------------------------------------------------------------------------------------------------------------------------------------------------------------------------------------------------------------------------------------------------------------------------------------------------------------------------------------------------------------------------------------------------------------------------------------------------------------------------------------------------------------------------------------------------------------------------------------------------------------------------------------------------------------------------------------------------------------------------------------------------------------------------------------------------------------------------------------------------------------------------------------------------------------------------------------------------------------------------------------------------------------------------------------------------------------------------------------------------------------------------------------------------------------------------------------------------------------------------------------------------------------------------------------------------------------------------------------------------------------------------------------------------------------------------------------------------------------------------------------------------------------------------------------------------------------------------------------------------------------------------------------------------------------------------------------------------------------------------------------------------------------------------------------------------------------------------------------------------------------------------------------------------------------------------------------------------------------------------------------------------------------------------------------------------------------------------------------------------------------------------------------------------------------------------------------------------------------------------------------------------------------------------------------------------------------------------------------------------------------------------------------------------------------------------------------------------------------------------------------------------------------------------------------------------------------------------------------------------------------------------------------------------------------------------------------------------------------------------------------------------------------------------------------------------------------------------------------------------------------------------------------------------------------------------------------------------------------------------------------------------------------------------------------------------------------------------------------------------------------------------------------------------------------------------------------------------------------------------------------------------------------------------------------------------------------------------------------------------------------------------------------------------------------------------------------------------------------------------------------------------------------------------------------------------------------------------------------------------------------------------------------------------------------------------------------------------------------------------------------------------------------------------------------------------------------------------------------------------------------------------------------------------------------------------------------------------------------------------------------------------------------------------------------------------------------------------------------------------------------------------------------------------------------------------------------------------------------------------------------------------------------------------------------------------------------------------------------------------------------------------------------------------------------------------------------------------------------------------------------------------------------------------------------------------------------------------------------------------------------------------------------------------------------------------------------------------------------------------------------------------------------------------------------------------------------------------------------------------------------------------------------------------------------------------------------------------------------------



**Architects**  
**Clayton & Little**  
1001 East 8<sup>th</sup> Street  
Austin Texas 78702

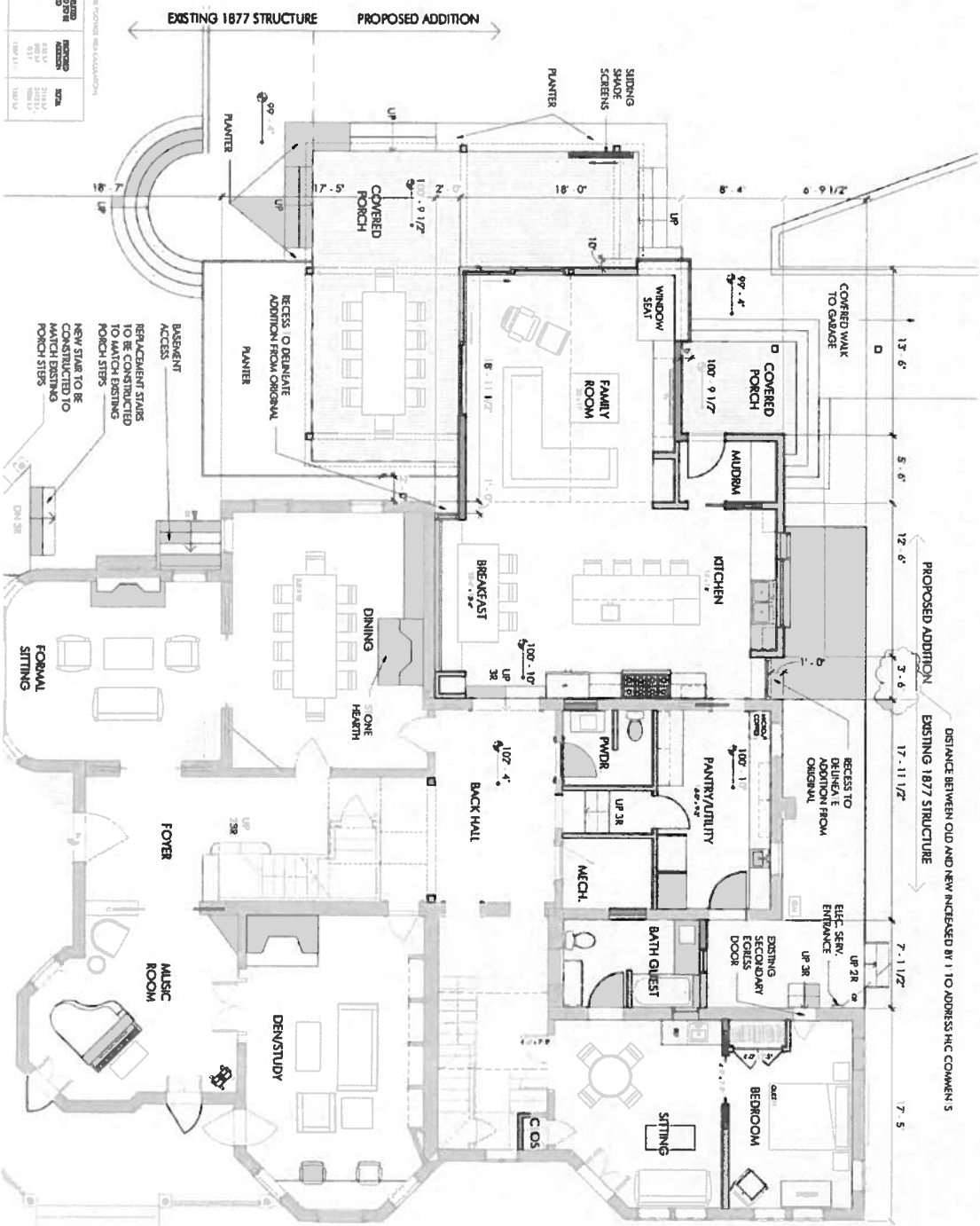
**PRELIMINARY  
NOT FOR CONSTRUCTION**

**WEST LYNN RESIDENCE**  
610 W. LYNN ST. AUSTIN, TX 78703

## CERTIFICATE OF APPROPRIATENESS SUBMITTAL



USE FOR: (SEE PAGE 1)	DATE AND LOCATION	ACTIVITY DURING FIELD STUDY	PERIOD OBSERVED	NOTE
COASTAL WETLANDS BIOLOGICAL MONITORING AND DATA COLLECTION (CHESAPEAKE BAY)	2008-06-11 NOR 11 E.S.	2008-06-11 13:30-14:00 0.51	08:00-14:00 0.51	2108-06-11 2008-06-11 2008-06-11



**Architects**  
**Clayton & Little**  
1001 East 8<sup>th</sup> Street  
Austin Texas 78702

**PRELIMINARY  
NOT FOR CONSTRUCTION**

**WEST LYNN RESIDENCE**  
610 W. LYNN ST. AUSTIN, TX 78703

## CERTIFICATE OF APPROPRIATENESS SUBMITTAL



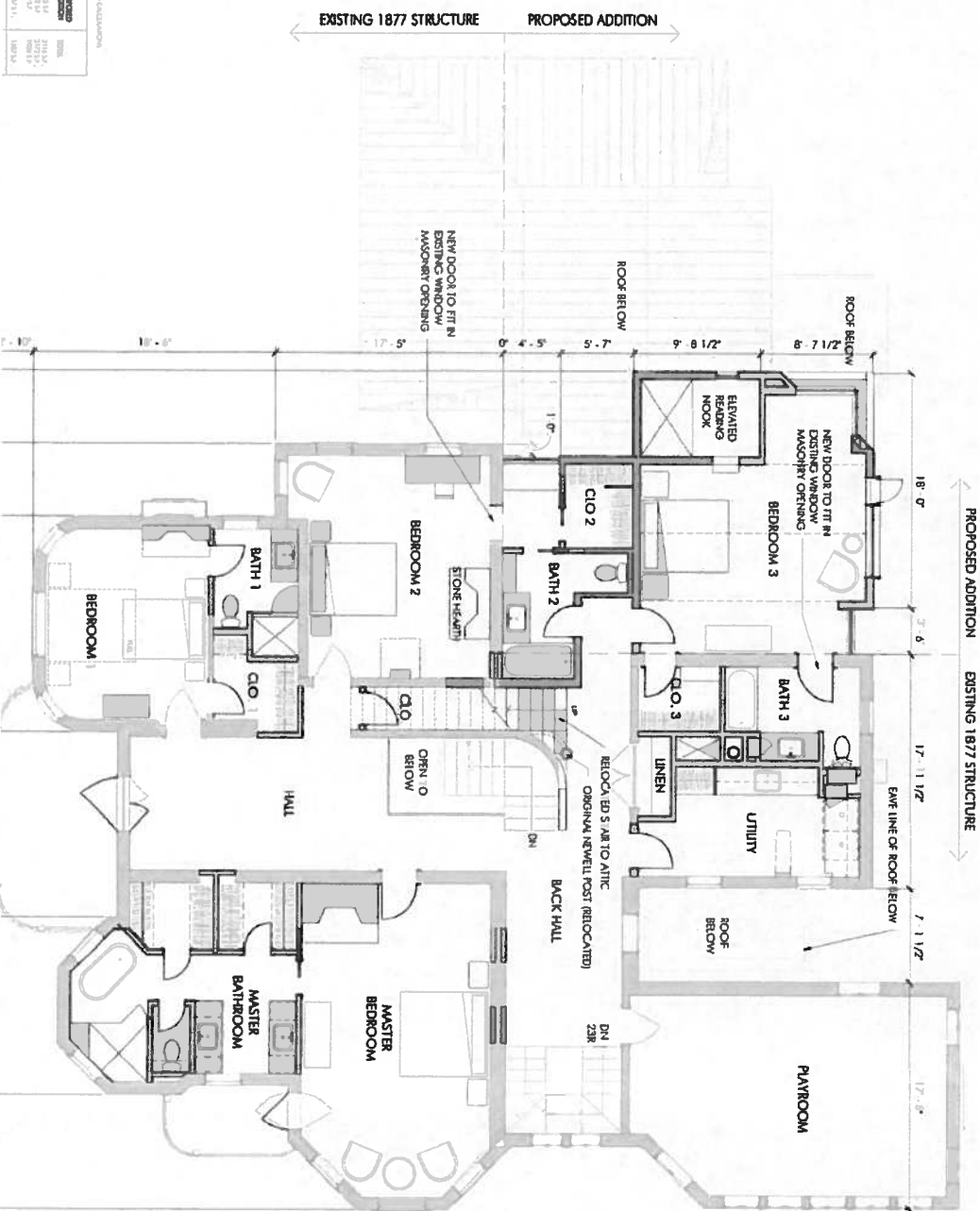




[illegible]

WEST LYNN RESIDENCE

COOPERATIVE FOOTWEAR AND CLOTHING

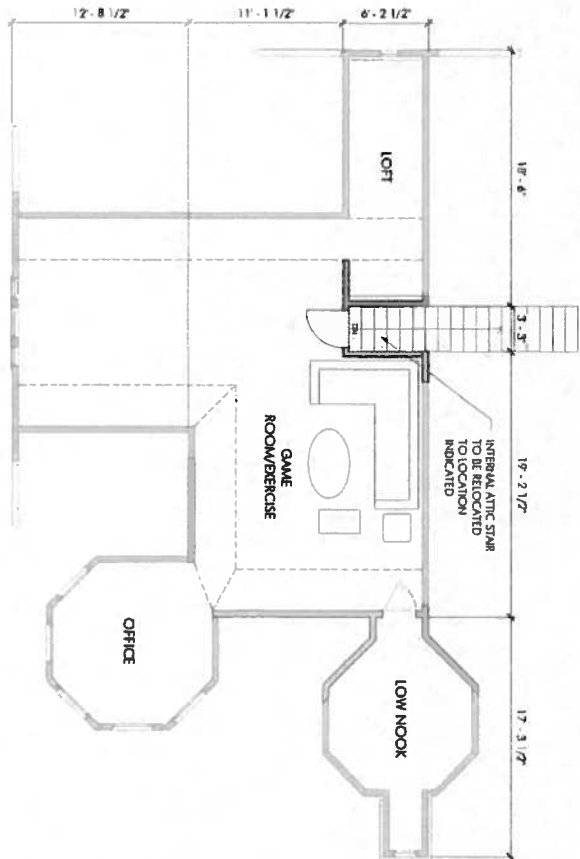


**Architects**  
**Clayton & Little**  
1001 East 8<sup>th</sup> Street  
Austin Texas 78702

**PRELIMINARY  
NOT FOR CONSTRUCTION**

**WEST LYNN RESIDENCE**  
610 W. LYNN ST. AUSTIN, TX 78703

## CERTIFICATE OF APPROPRIATENESS SUBMITTAL



WEST LYNN RESIDENCE  
610 W. LYNN ST. AUSTIN, TX 78703  
CERTIFICATE OF APPROPRIATENESS SUBMITTAL

Architects  
Clayton & Little  
1001 East 8th Street  
Austin Texas 78702

**PRELIMINARY**  
**NOT FOR CONSTRUCTION**  
This drawing was prepared under the supervision of Paul Clayton, a registered professional architect. It is not to be used for regulatory construction purposes.

WEST LYNN RESIDENCE			
DATE	DESCRIPTION	BY	CHKD
07/11/17	ARCHITECTURAL	CLAYTON	LITTLE
07/11/17	STRUCTURAL	CLAYTON	LITTLE
07/11/17	Mechanical	CLAYTON	LITTLE
07/11/17	Electrical	CLAYTON	LITTLE
07/11/17	Plumbing	CLAYTON	LITTLE
07/11/17	Interior Design	CLAYTON	LITTLE
07/11/17	Exterior Design	CLAYTON	LITTLE
07/11/17	Site Plan	CLAYTON	LITTLE
07/11/17	Section	CLAYTON	LITTLE
07/11/17	Elevation	CLAYTON	LITTLE
07/11/17	Detail	CLAYTON	LITTLE
07/11/17	Final	CLAYTON	LITTLE







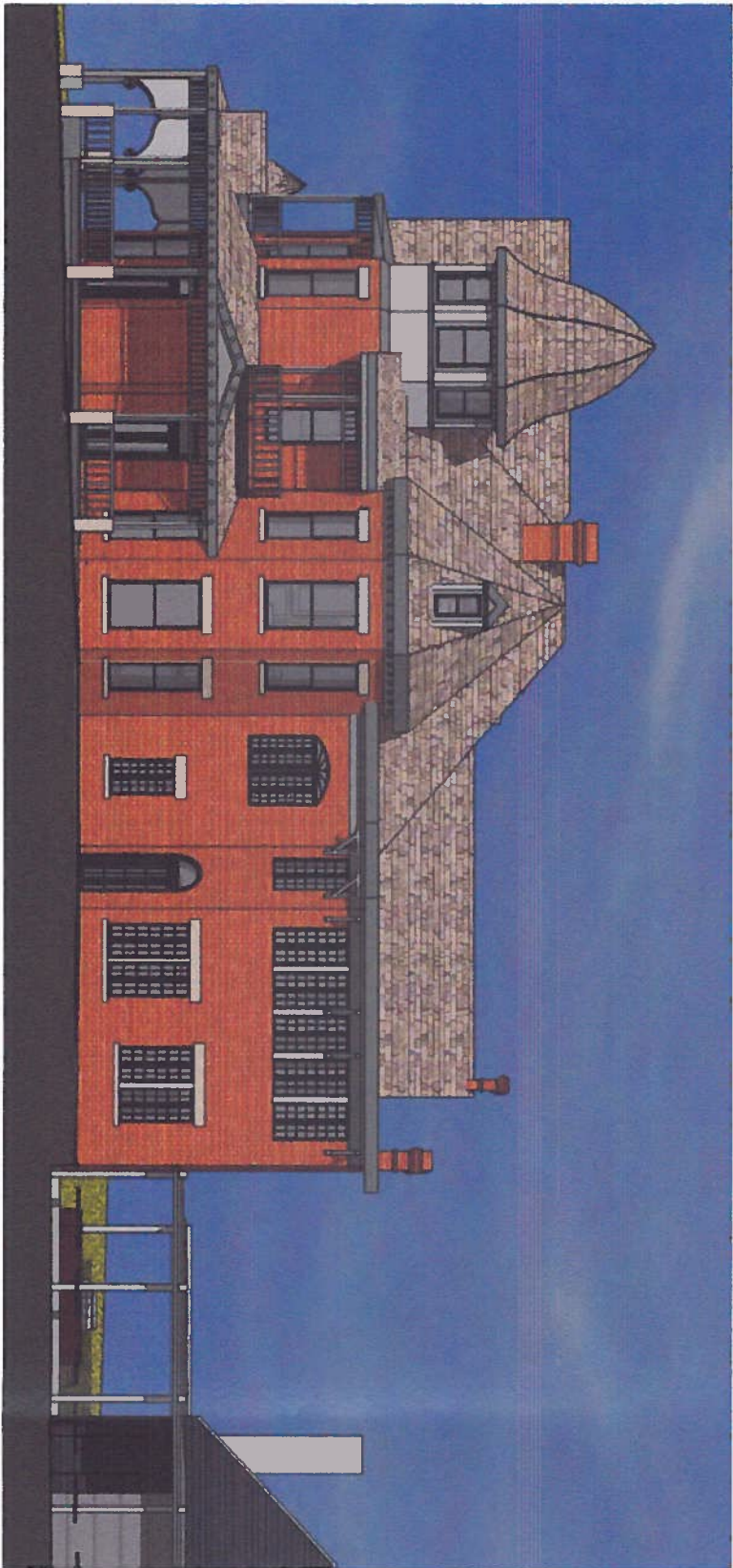
**SOUTH ELEVATION (PRIMARY RESIDENCE)**  
1/8"=1'-0"

Architects  
**Clayton&Little**  
1001 East 8<sup>th</sup> Street  
Austin Texas 78702

**PRELIMINARY**  
**NOT FOR CONSTRUCTION**  
This drawing was prepared under  
the supervision of Paul Clayton.  
It is not to be used for regulatory  
approval, permitting, or  
construction purposes.

**WEST LYNN RESIDENCE**  
610 W. LYNN ST. AUSTIN, TX 78703  
**CERTIFICATE OF APPROPRIATENESS SUBMITTAL**





EAST ELEVATION (PRIMARY RESIDENCE)  
1/8"=1'-0"

Architects  
**Clayton Little**  
1001 East 8<sup>th</sup> Street  
Austin Texas 78702

**PRELIMINARY**  
**NOT FOR CONSTRUCTION**  
This drawing was prepared under  
the supervision of Paul Clayton.  
It is not to be used for regulatory  
approval, permitting, or  
construction purposes.

**WEST LYNN RESIDENCE**  
610 W. LYNN ST. AUSTIN, TX 78703  
**CERTIFICATE OF APPROPRIATENESS SUBMITTAL**



FIRE TREATED WOOD SHAKES  
(REPLACING ASPHALT SHINGLES)

STAINED WOOD SIDING

ALUMINUM CLAD DOORS & WINDOWS

PAINTED STEEL COLUMNS & BEAMS

STANDING SEAM METAL ROOF

NORTH ELEVATION (PRIMARY RESIDENCE)

PAINTED COMPOSITE BOARD SIDING

Architects  
**Clayton & Little**  
1001 East 8th Street  
Austin Texas 78702

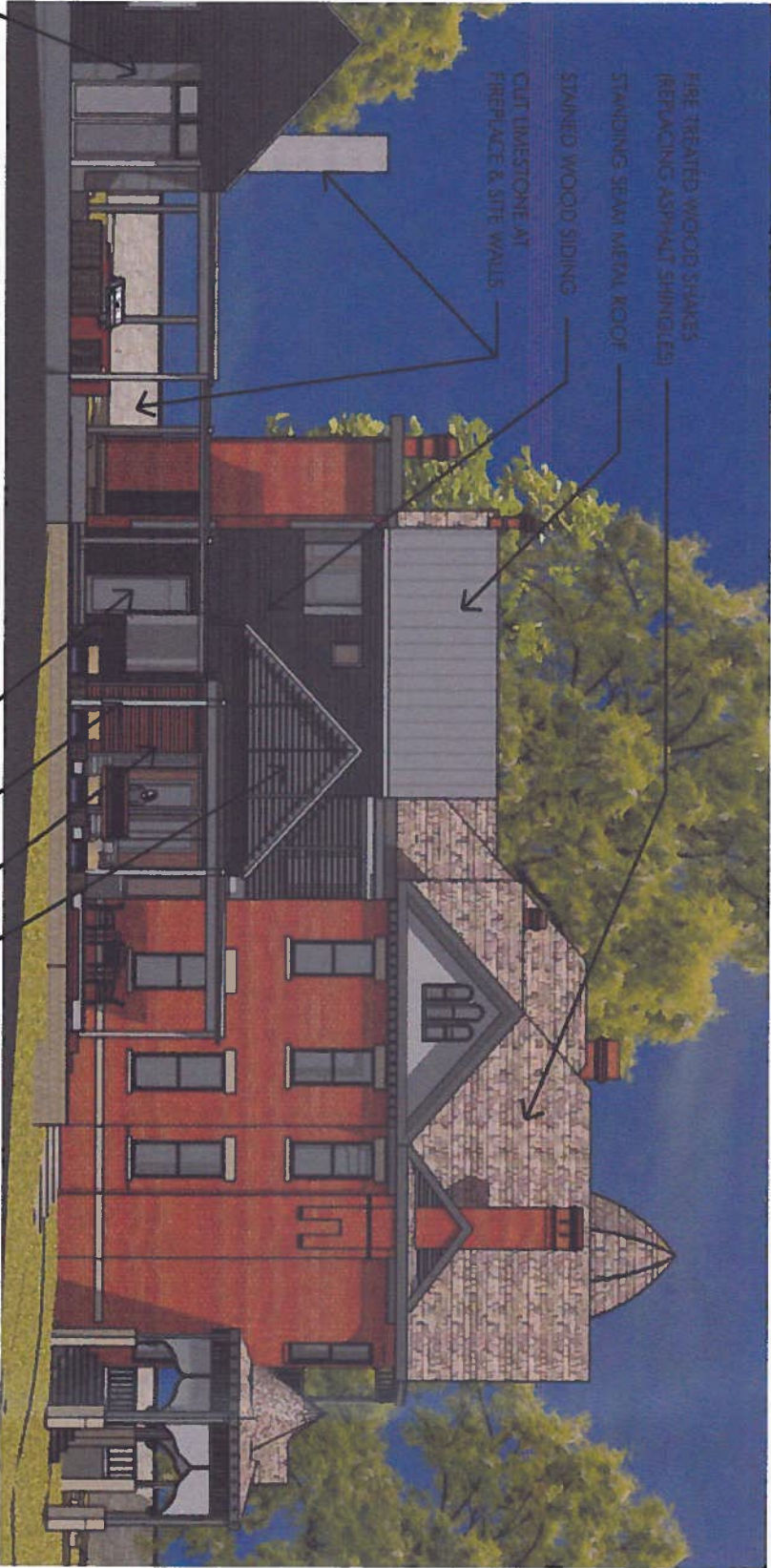
**PRELIMINARY**  
**NOT FOR CONSTRUCTION**  
This drawing was prepared under  
the supervision of Paul Clayton.  
It is not to be used for regulatory  
approval, permitting, or  
construction purposes.

## WEST LYNN RESIDENCE

610 W. LYNN ST. AUSTIN, TX 78703

CERTIFICATE OF APPROPRIATENESS SUBMITTAL





HIP- TREATED WOOD SHAKES  
(REPLACING ASPHALT SHINGLES)

STANDING SEAM METAL ROOF

STAINED WOOD SIDING

CUT LIMESTONE AT  
FIREPLACE & SITE WALLS

WEST ELEVATION (PRIMARY RESIDENCE)  
1/8"-1'-0"

PAINTED COMPOSITE BOARD SIDING

IPE WOOD SHADE AT GABLE WINDOW

BARN DOOR SHADE PANEL WITH IPE WOOD SLATS

PAINTED STEEL COLUMNS & BEAMS

Architects  
**Clayton Little**  
1001 East 8th Street  
Austin Texas 78702

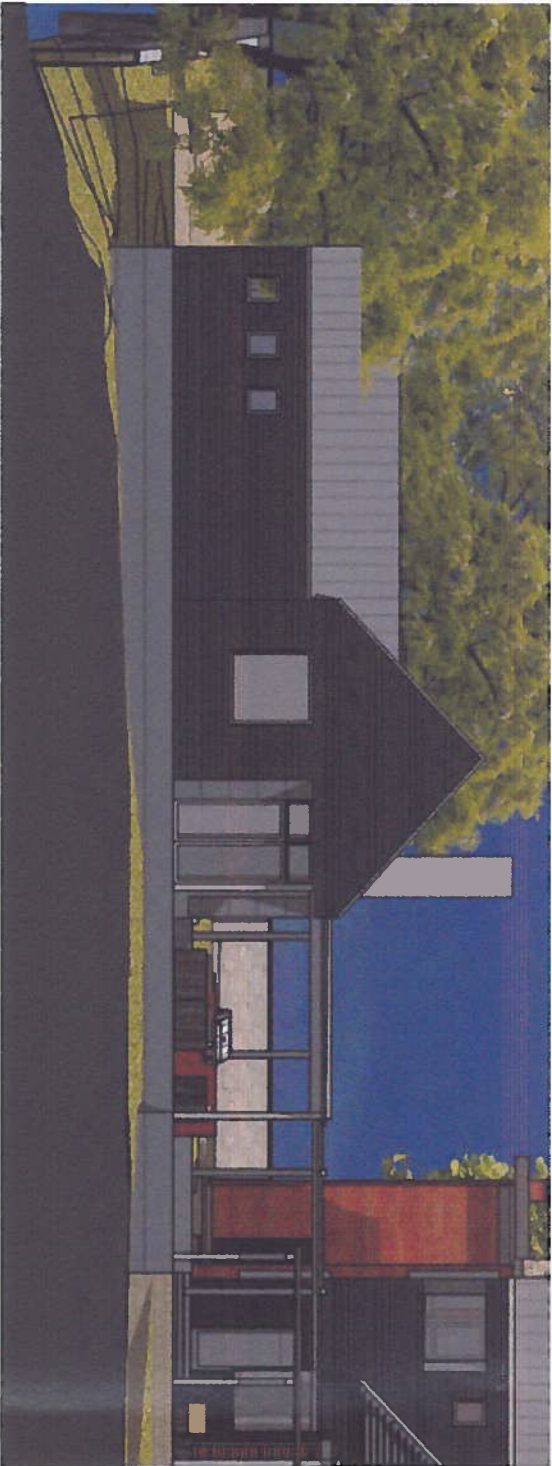
**PRELIMINARY**  
**NOT FOR CONSTRUCTION**  
This drawing was prepared under  
the supervision of Clayton Little.  
It is not to be used for regulatory  
approval, permitting, or  
construction purposes.

## WEST LYNN RESIDENCE

610 W. LYNN ST. AUSTIN, TX 78703

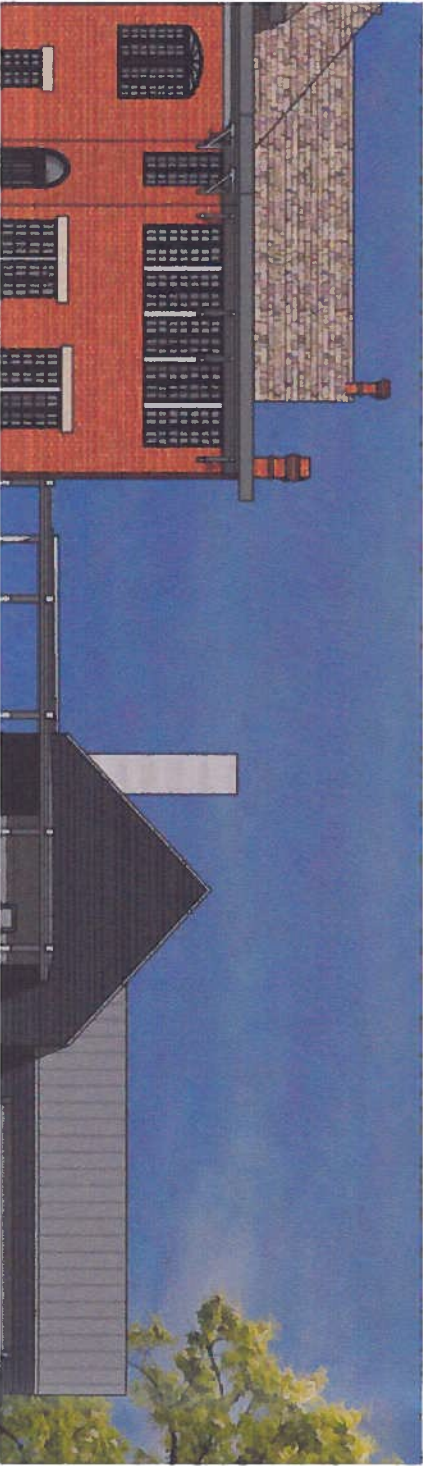
CERTIFICATE OF APPROPRIATENESS SUBMITTAL





WEST ELEVATION (GARAGE)

1/8"=1'-0"



Architects  
Clayton&Little  
1001 East 8<sup>th</sup> Street  
Austin Texas 78702

**PRELIMINARY  
NOT FOR CONSTRUCTION**  
  
This drawing was prepared under  
the supervision of Paul Clayton.  
It is not to be used for regulatory  
approval, permitting, or  
construction purposes.

WEST LYNN RESIDENCE  
610 W. LYNN ST. AUSTIN, TX 78703

CERTIFICATE OF APPROPRIATENESS SUBMITTAL





**SOUTH ELEVATION (GARAGE)**  
1/8"=1'-0"



Architects  
**Clayton&Little**  
1001 East 8th Street  
Austin Texas 78702

**PRELIMINARY**  
**NOT FOR CONSTRUCTION**  
This drawing was prepared under  
the supervision of Clayton Little  
It is not to be used for regulatory  
approval, permitting, or  
construction purposes.

**WEST LYNN RESIDENCE**  
610 W. LYNN ST. AUSTIN, TX 78703  
**CERTIFICATE OF APPROPRIATENESS SUBMITTAL**

Stuart Brummett

Subject: FW: 610 W. Lynn email

From: Elizabeth Brummett [mailto:Elizabeth.Brummett@tnc.state.tx.us]  
Sent: Friday, February 07, 2014 9:49 AM  
To: Stuart Brummett  
Cc: Emily Little  
Subject: RE: 610 W. Lynn email

Stuart,

It was good to meet with you on Wednesday regarding the Sheeks Robertson House at 610 W. Lynn in Austin. While the house is listed in the National Register of Historic Places, this designation is primarily honorary and does not require review by our office. We are nevertheless happy to comment on the proposed project.

One aspect of the project is establishment of a south entrance at the front of the property, which will require removal of a portion of a historic-age stone wall. The National Register nomination for this property is relatively early, from 1976, and does not extensively describe the site. No mention is made of the perimeter limestone wall, its date of construction, or its significance, but the wall appears in a ca. 1930 site plan you have.

This property is also located within the West Line Historic District. Per that nomination, "Early settlement in the area consisted of expansive estates, later subdivided in response to the city's burgeoning population." This pattern of development often disrupted the relationship of the older houses to W. Sixth Street, as was the case with the Sheeks Robertson House, currently accessed from W. Lynn at the rear of the home. While it is not possible to directly reestablish a relationship to Sixth Street, construction of a second side entrance from W. Lynn at the front of the house would have the positive effect of reemphasizing this primary elevation.

Other proposed work entails construction of an addition and a garage at the rear of the property. This work as presented appears to meet the Secretary of the Interior's Standards for Rehabilitation. While the proposed addition is of the same height and the rear wall aligns with the historic house, the location at the back corner of the house and separation by a hyphen deemphasize the new construction. The modern design shares a similar massing and roof form to the house and is differentiated yet compatible with the historic home.

Regarding paint color selection, we suggest performing a paint analysis to determine an earlier paint palette. From a historic photo, it appears that the trim and woodwork were painted white by the early 20th century, but this was likely predated by a bolder Victorian-era color scheme. We strongly discourage painting the brick, as this would dramatically alter the historic character of the house and is not easily reversible.

Please let me know if we can provide additional feedback on this project.

A. Elizabeth Brummett  
State Coordinator for Project Review  
Division of Architecture  
Texas Historical Commission  
P.O. Box 12276  
Austin, Texas 78711  
512-463-6167  
www.tnc.state.tx.us

Architects  
Clayton&Little  
1001 East 8th Street  
Austin Texas 78702

**PRELIMINARY**  
**NOT FOR CONSTRUCTION**  
  
This drawing was prepared under  
the authority of the Professional Seal  
It is not to be used for regulatory  
approval, permitting, or  
construction purposes.

WEST LYNN RESIDENCE  
610 W. LYNN ST. AUSTIN, TX 78703

CERTIFICATE OF APPROPRIATENESS SUBMITTAL



Life of  
James Harvey Robertson

By  
his daughter  
Margaret Robertson

Page -8-

Judge Shreek's place on West 6th Street was put up for sale about the time and Mr. Robertson bought the place. A large two story frame house on 6 acres of land on the top of a hill overlooking the Colorado River. There were very few people living in the neighborhood, and the family lived like country folks with chickens and a cow and used the mule drawn street car which went as the foot of the hill to town. The oldest girl, Margaret, was born some months after they moved and was welcomed by her father as he had told Susie he would give a million dollars for a girl. She says of their life there. "It was the happiest years of my life. It was ideal for children. We lived in the out-of-doors--riding horseback and playing out every evening. We had a tennis court at the foot of the hill and summer evenings when we were gathered in the library after supper, the music of the Mexican serenaders would break out softly--"La Colandrina" and "La Paloma"--a violin, a bass violin and a guitar and I thought it was the sweetest music in the world. The musicians were happy to have a 50¢ piece as reward."

In 1834 his mother moved to Texas and lived in Taylor and eventually all of her children came and lived in Texas. James Robertson was the supporter and advisor of all of his family and helped them all financially and with his advice and kind thoughts.

One of my earliest recollections, at this time was when I had an ear ache. It must have been very painful as I remember the way my father held me in front of the fire and tried to soothe me. Another vivid memory is one time when my father went down the

Page -9-

It and my surprise when she threw him his hat and the way they laughed. One of the few times I really thought of my parents as young. My father was wonderful to me as he always brought me back a doll when he came from his law trips. And as my mother was so pretty I adored her and was always asking her to let me brush her hair, which was very thick and a dark reddish brown.

In 1897, when he was in his forties he decided to fix up the frame house they had lived in for ten years and have it veneered with red bricks and numerous changes made on the outside as well as the interior. A lucky chance in Chicago, there was a sale of an interior of a house mostly hard wood paneling and Judge Robertson bought this and had it fitted into the interior of his house. The summer when they were working on the house was spent in Fort Davis as his oldest son, Warren, had a spot on his lung and had gone there to recuperate. On the family's return they went to the old Millet Mansion Hotel and from there moved into the house which Judge Robertson had planned and worked for to give his wife and children a beautiful and comfortable house. It stood on top of the hill with 6 acres of sloping ground in front of it. The three boys and two girls grew up in fine surroundings going to school and having a happy time in what was then country.

Judge Robertson gathered a fine library, Dickens, Balzac, Lytton and Thackeray and the children read a great deal. One winter my father read "Pickwick Papers" in the evenings in front of the fire and it was a joy to all of us.

Architects  
Clayton Little  
1001 East 8th Street  
Austin Texas 78702

PRELIMINARY  
NOT FOR CONSTRUCTION  
This drawing was prepared under  
the supervision of Paul Clayton.  
It is not to be used for regulatory  
approval, permitting, or  
construction purposes.

WEST LYNN RESIDENCE  
610 W. LYNN ST. AUSTIN, TX 78703

CERTIFICATE OF APPROPRIATENESS SUBMTTAL

## Vagary of History



Among the fringe benefits of the *Journal of the Travis County Historical Society* are the reviews, comments and stories which these articles bring forth from interested citizens. Even the corrections and criticisms are warmly welcomed, for a researcher is also human and liable to be carried away by enthusiasm, or alas! even error.

When over the vegetable counter in the grocery store, a friend, from an old time family, tells a story from his own or her experience, such as this one told by one of the daughters of the late Judge James H. Robertson, Judge John T. Jones is district attorney of Travis County in the 1880's, a district judge, a distinguished member of the

According to his daughter, Adele, her mother, while his father was away, was being held on a hill above the city, near the intersection of West Sixth Street, took her family to Fort Dodge to spend the summer. When the family returned to Ashlar at the end of the summer, the house was burned, yet hidden so the family survived for two months at the Mitchell Mansion, just over to the east of Ashlar. Opa and Grandma and Aunt Ophelia and Uncle Bill, Opa's brother, were the only ones to survive. The family was then taken to the Mitchell Mansion, where they lived for a year. Opa and Grandma and Aunt Ophelia and Uncle Bill, Opa's brother, were the only ones to survive. The family was then taken to the Mitchell Mansion, where they lived for a year.

According to his daughter, "Mother, Robertson, while his family was being told on a hill above West Sixth Street, took his family to Fort Davis to spend the summer. When the family returned to Austin at the end of the summer, the house was empty, yet filled for two months at the Milburn Masons' next door to the Robertson house. Said Mrs. Robertson, "I saw the man who was the engineer at children with the exploring and one of her brothers discovered a little brother in the Milburn Masons although they could look down directly at the steps of the Opera House. Each night they stayed good to the Robertson, especially by the children, and the children were told that they

embarked together too. After the family moved into the empty house, the father took his daughter to the Milburn Masons' and the children were there for 10, 18 and 20 cents. Her favorite was East Lynn. To this day, she can see the lowering scene at the end, the berries who had turned, but repeated, "I'm going to a couch, reading the living death and a beautiful thing, dear."

James Robertson told his family that since he had donated land to the city for a street on the boundary of his property, he had been asked to assume the street. Did the Children have any suggestion? He spoke the

## City Directories, Austin History Center

**1879-80**

David Sheeks (Sheeks & Sincad) resides in Pocahontas, Mo. James D. Sheeks, same address (both are listed as attorneys with Sheeks & Sincad)

1885-86

David Sheets (Sheets & Sheets) David bds. w/ Mrs. Fannie Boardman James D. Sheets, h. John H. Robinson Sr.  
Robertson, James H., district attorney, r. 2004 San Antonio

Robertson, James H., district attorney, r. 2004 San Antonio

**1887-88**

James H. Robertson, district attorney, office Courthouse,  
rns W. 6<sup>th</sup> or Pecan, 5<sup>th</sup> house w. of Blanco

1889-90  
1891-92

ns W. 6<sup>th</sup>. 5<sup>th</sup> house w. of Blanco  
ns W. 6<sup>th</sup>. 5<sup>th</sup> house w. of Blanco

1893-94

James H. Robertson, district judge 53<sup>rd</sup> judicial district, office Courthouse  
T. ws first st. w. of Blanco between W. 6<sup>th</sup>, 9<sup>th</sup>

1895-96

James H. Robertson (Hogg & Robertson) attorney  
T. NW COR W. 6<sup>th</sup>, 1<sup>st</sup> St. w of Blanco

1897-98

same as above

1903-04

same as above, now listed as (Robertson & Hogg)

1905

**James H. Robertson, lawyer, res cor Weslin & W. 6<sup>th</sup>**

1906-07  
1907-08

James H. Robertson, Rep. 61<sup>st</sup> district, also atty at law, res 1500 W. 6th same as above

01-6061

James H. Robertson, attorney, 1 NW cor W. 6<sup>th</sup>, Westlin  
same as above

1912-13

James H. Robertson died in 1912.  
Robertson, John B. Attorney, r. 1500 W. 6<sup>th</sup>

Warren T. attorney, b. 1500 W. 6<sup>th</sup>

## FIRST LIST

Robertson, J. Benjamin, lawyer, bds 1500 W. 6<sup>th</sup>  
Margaret Miss bds 1500 W. 6<sup>th</sup>  
Margaret Miss bds 612 Westlin [sic]  
Margaret Miss bds 612 Westlin [sic]  
Susie M. (wid James H) res 612 Westlin

**Architects**  
**Clayton & Little**  
1001 East 8<sup>th</sup> Street  
Austin Texas 78702

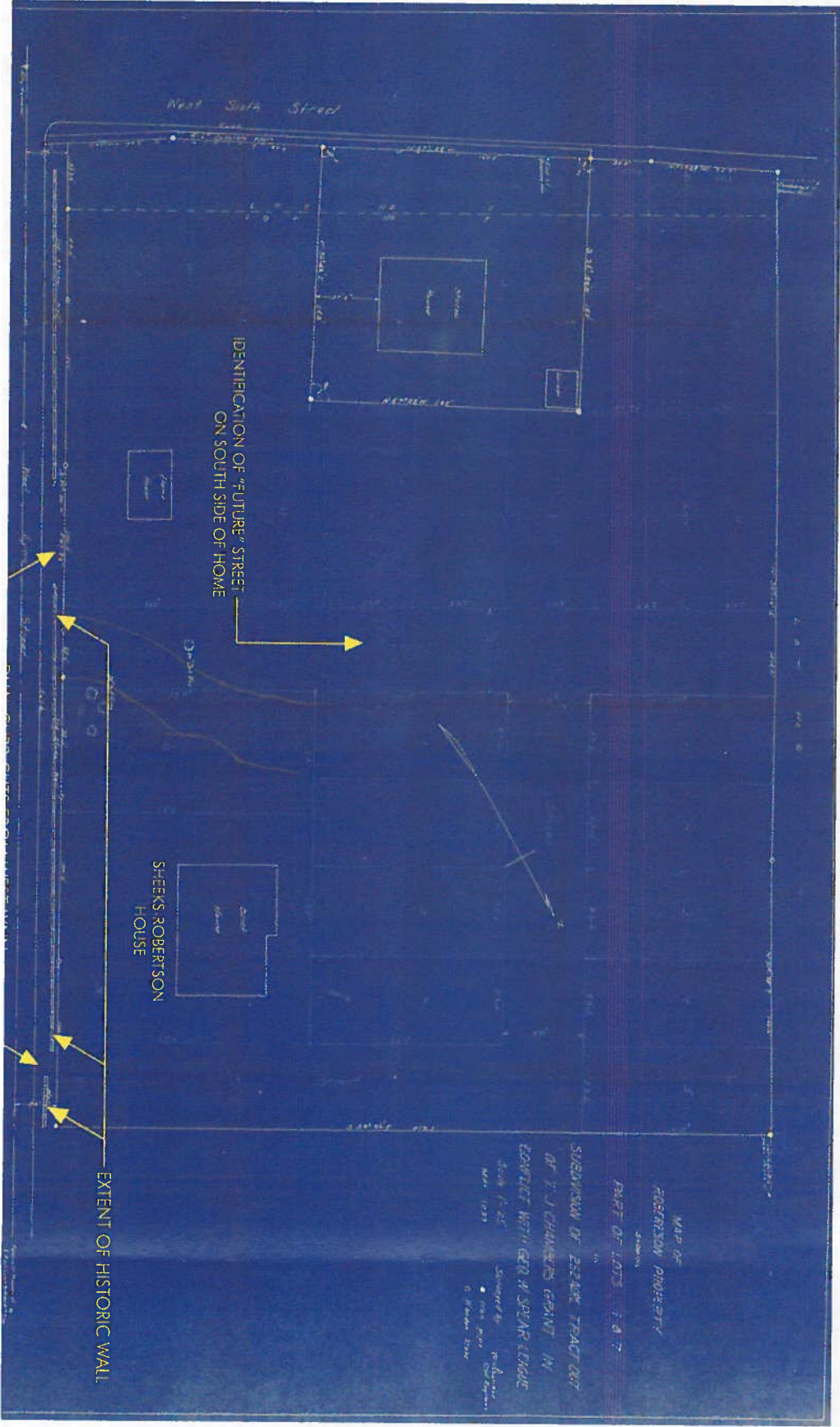
**NOT FOR CONSTRUCTION**

This drawing was prepared under the supervision of Paul Clayton. It is not to be used for regulatory approval, permitting, or construction purposes.

610 W. LYNN ST. AUSTIN, TX 78703

# CERTIFICATE OF APPROPRIATENESS SUBMITTAL





Architects  
Clayton Little  
1001 East 8th Street  
Austin Texas 78702

**PRELIMINARY  
NOT FOR CONSTRUCTION**  
This drawing was prepared under  
the supervision of Paul Clayton,  
a Licensed Professional Engineer,  
approval, permission, or  
construction purposes.

# WEST LYNN RESIDENCE

610 W. LYNN ST. AUSTIN, TX 78703

CERTIFICATE OF APPROPRIATENESS SUBMITTAL

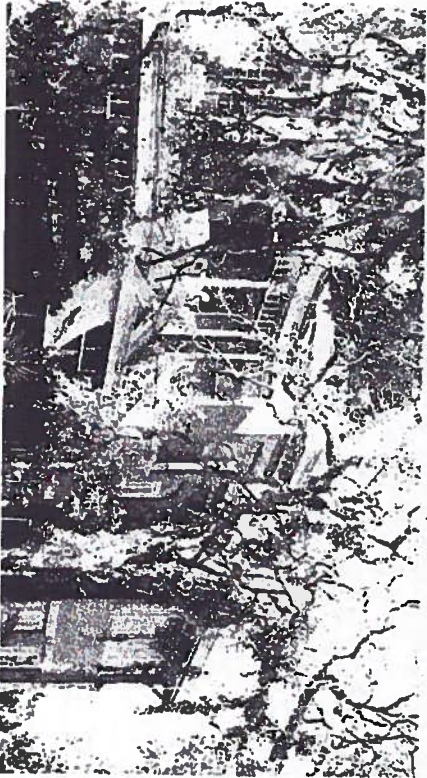
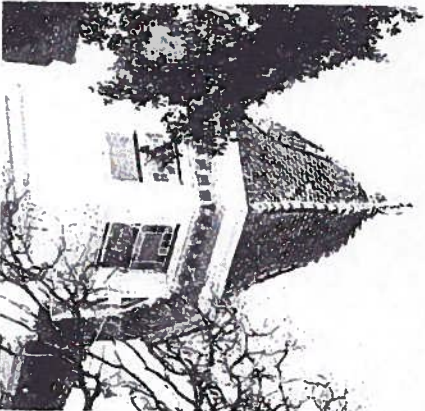




EXISTING VIEW OF NORTHEAST CORNER



EXISTING VIEW OF SOUTHEAST CORNER



Architects  
Clayton & Little  
1001 East 8th Street  
Austin Texas 78702

**PRESUMATIVE  
NOT FOR CONSTRUCTION**  
This drawing was prepared under  
the supervision of Paul Clayton.  
It is not to be used for regulatory  
approval, permitting, or  
construction purposes.

**WEST LYNN RESIDENCE**  
610 W. LYNN ST. AUSTIN, TX 78703  
**CERTIFICATE OF APPROPRIATENESS SUBMITTAL**