

Walnut Creek Hike and Bike Trails

SPONSOR: PARD

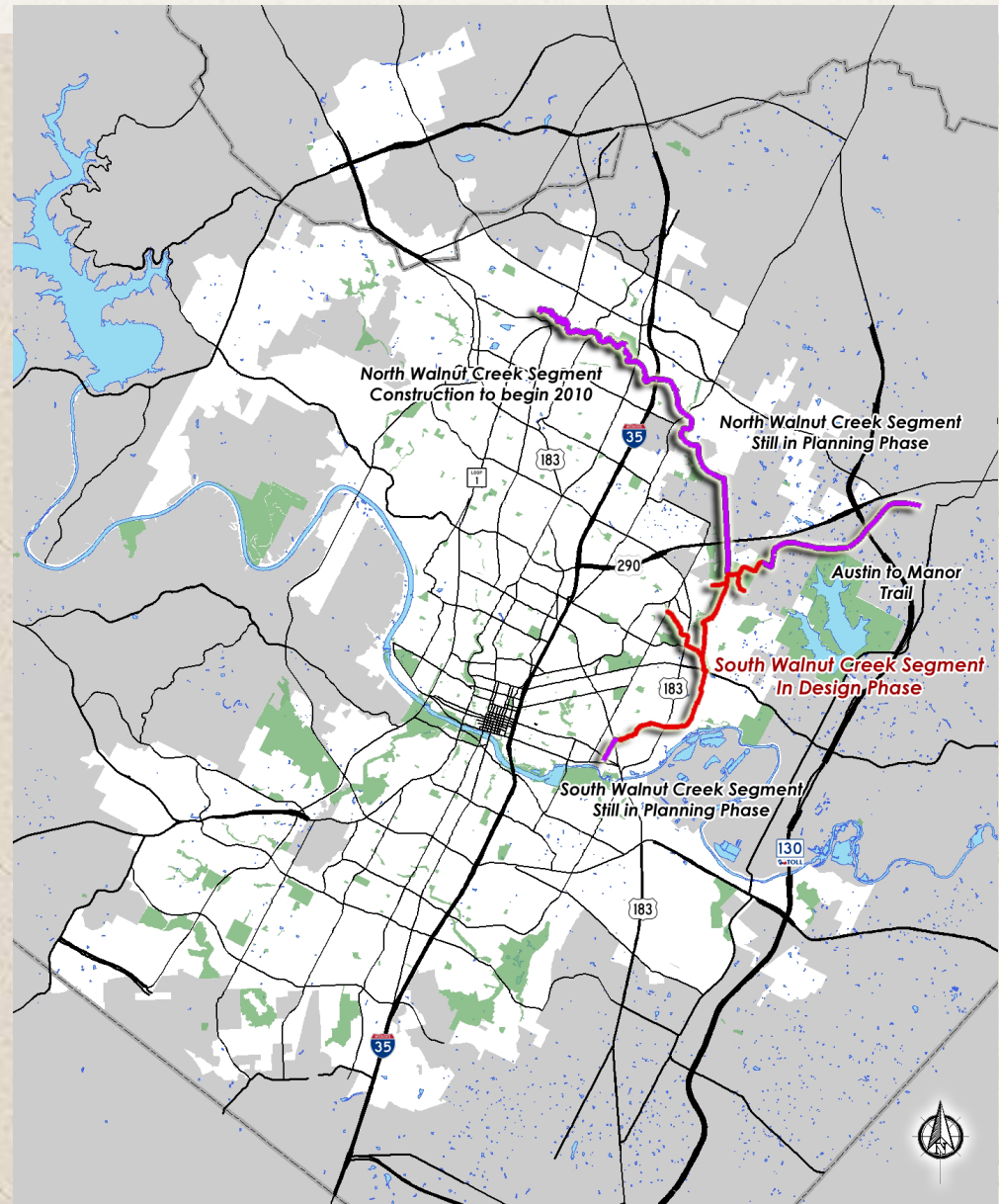
CONSTRUCTION MANAGEMENT: Public Works

Parks and Recreation Board Meeting
March 25, 2014



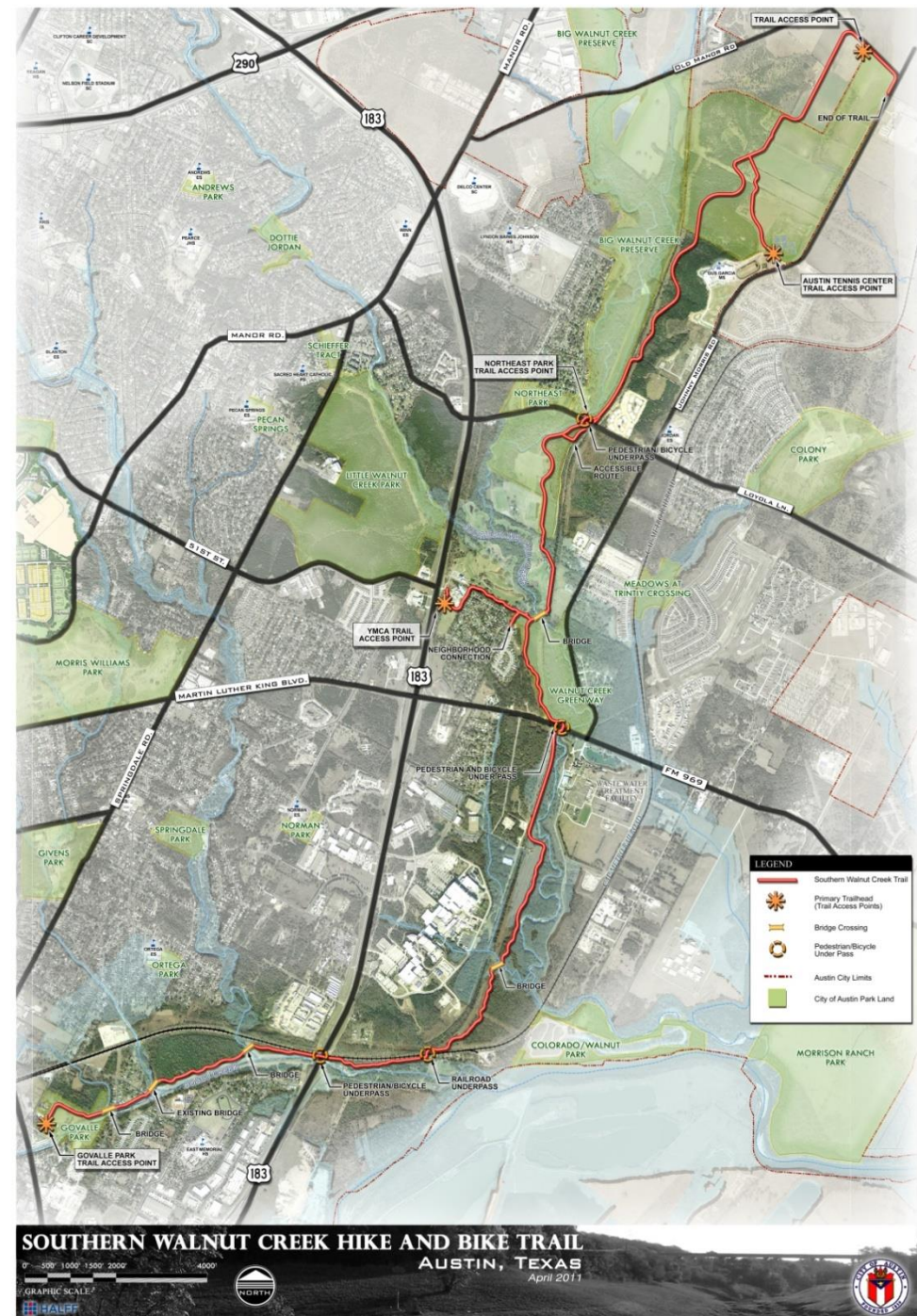
Location

- Southern Walnut (7.3 miles)
\$10,000,000
- N. Walnut Phase I (3 miles)
\$5,600,000
- N. Walnut Phase II (1.7 miles)
\$2,500,000
- **Total (12 miles) – \$16,100,000**



Southern Walnut Creek Trail

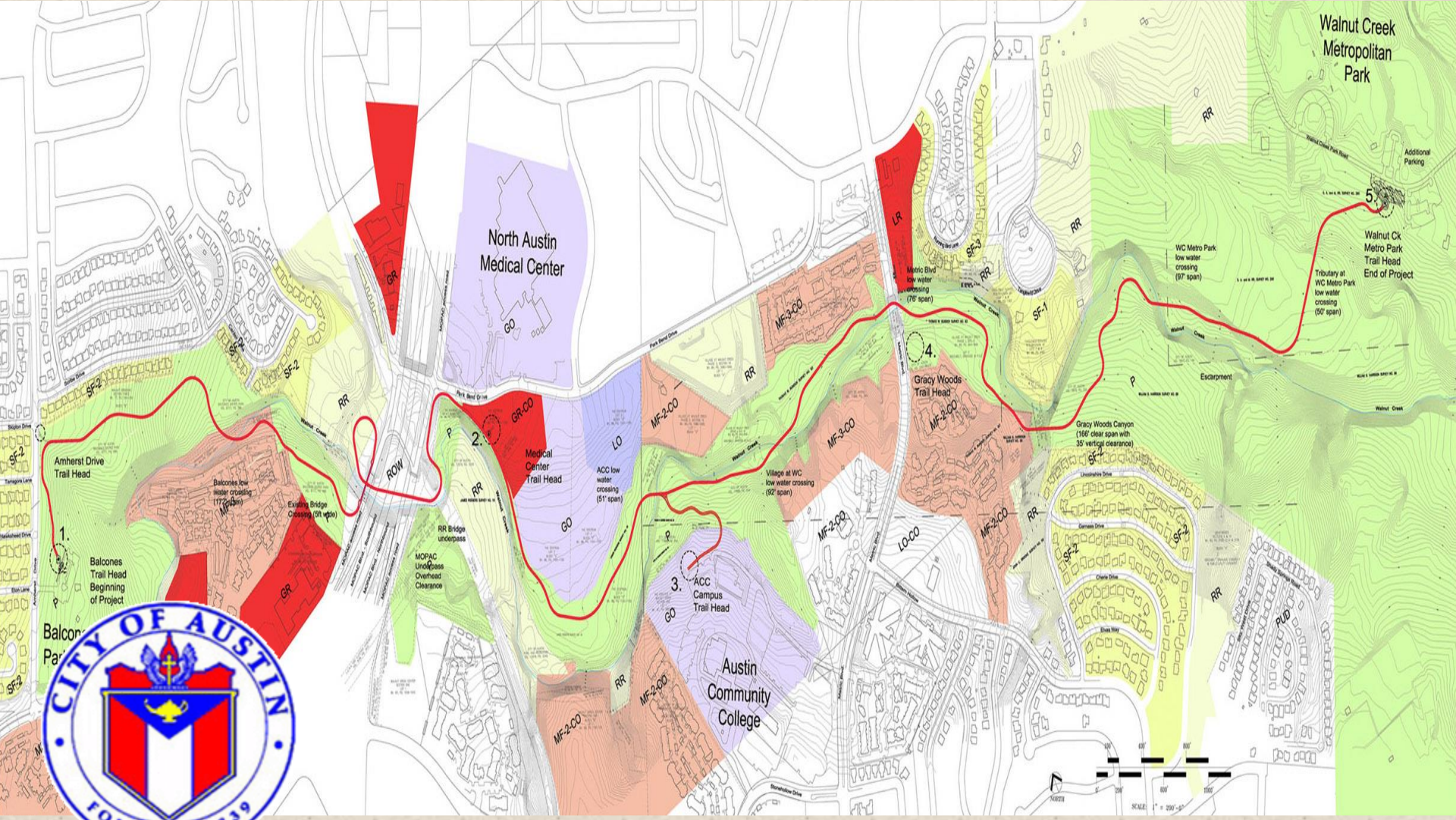
- Length: 7.3 miles
- Begins at Daffin Lane & Johnny Morris Road
- Ends at Govalle Park
- Bid \$10,000,000
- Construction \$8,000,000



Southern Walnut Creek Trail Project Status

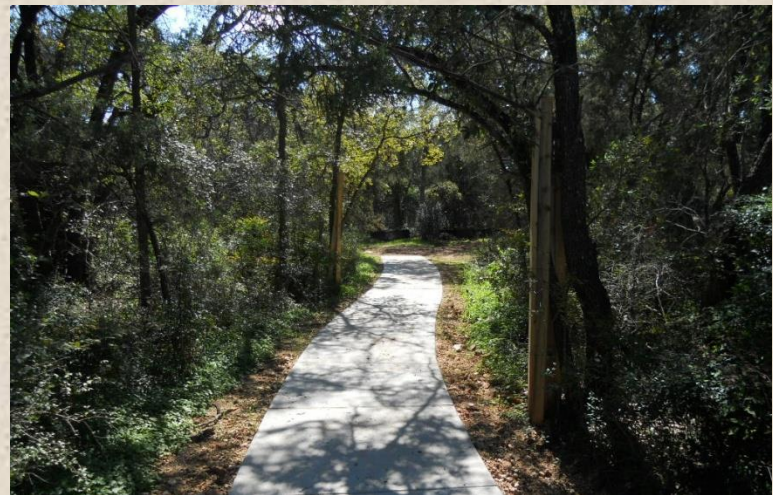
- Construction Ongoing
- Ahead of Schedule
- Under Budget
- Construction Complete July 2014
- Projected Cost \$8,000,000



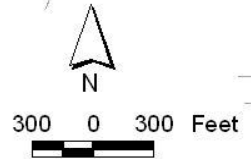


Northern Walnut Creek Trail Phase 1 Project Status

- Muniz NTP 4/22/13
- Construction Complete Balcones
- Construction Complete TXDOT ROW
- Construction Ongoing Walnut Creek Metro Park
- Site Plan Approval Ongoing
- Projected Cost \$5,600,000



Walnut Creek Trail Phase II



Phase I Trail

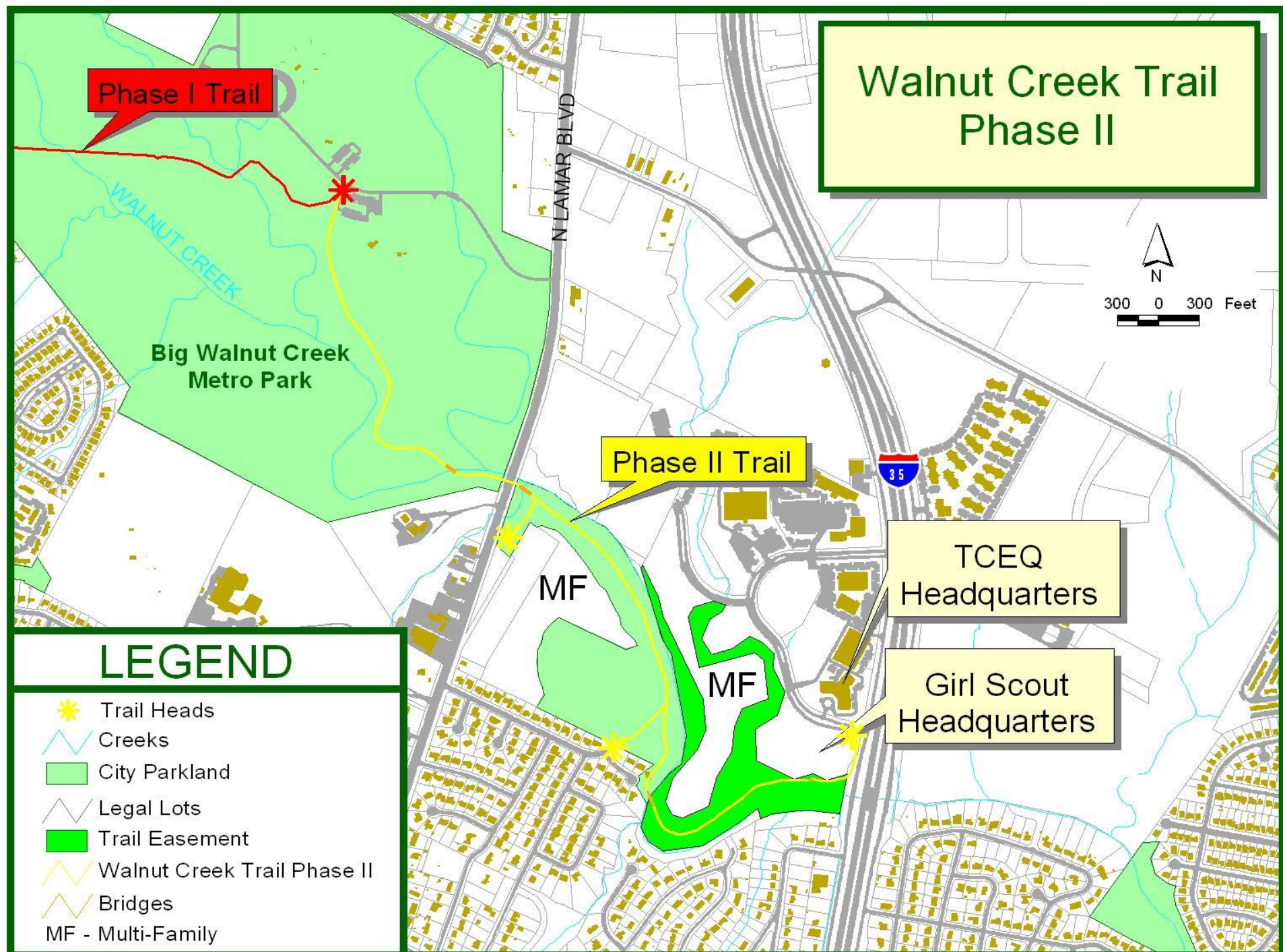
Phase II Trail

TCEQ
Headquarters

Girl Scout
Headquarters

LEGEND

- Trail Heads
- Creeks
- City Parkland
- Legal Lots
- Trail Easement
- Walnut Creek Trail Phase II
- Bridges
- MF - Multi-Family



CONNECT TO
PHASE 1 TRAIL

0+00

5+00

10+00

15+00

20+00

25+00

30+00

35+00

40+00

45+00

50+00

55+00

60+00

65+00

70+00

75+00

79+00

END OF
PHASE II TRAIL

WALNUT CREEK

LAMAR BLVD

IH-35



0 600' 1200'
SCALE IN FEET

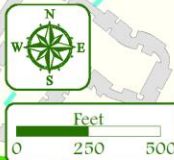
Walnut Creek Metro Park Trails

12138 N Lamar Blvd.

Thanks for Visiting Walnut Creek Metro Park!
These HIKE AND BIKE Trails are Multi-directional.
Please be courteous and safe.
Please do not ride on wet trails!!

- ### Trail Signs Legend
- To Parking Lot
 - Water Crossing
 - 11 Mile Intermediate Bike Route
 - Difficult Feature
 - Emergency Information

- ### Map Legend
- Parking
 - Kiosk
 - Restrooms
 - Pool
 - Difficult Feature
 - Trailheads
 - Emergency Information Intersections
 - Walnut Creek Metro Trails**
 - Arrows suggest direction for Intermediate Route
 - Intermediate Route (11 Miles)
 - Other Trails and Loops
 - Sports Fields
 - Overhead Power Lines
 - Other City of Austin Property
 - Creeks and Drainage
 - City of Austin Parks



This map is also available on the following websites:
www.austniridgenders.com
www.ci.austin.tx.us/parks

Northern Walnut Creek Trail Phase 2 Project Status

- Preliminary Alignment
- 100% Design December 2014
- Construction Start August 2015
- Construction Complete August 2016
- Estimated Projected Cost \$3,000,000
- Construction is partially funded

Issues and Opportunities

- City of Austin Permit Review
 - Site Plan Required
 - Rezoning Required
- Texas Department of Transportation
 - Letter of Authority to Construct
- Park Existing Uses
 - Austin Trail Riders



Website:

<http://www.ci.austin.tx.us/publicworks/urbantrails-projects.htm>

Questions?

