



# Universal Recycling Ordinance

Zero Waste Advisory Commission

April 9, 2014





# Agenda

1. Outreach & Education Efforts
2. Overview – Affected Properties
3. 2012 Affected Properties Update
4. 2013 Affected Properties Update
5. Compliance & Next Steps
6. Question & Answer



# Outreach & Education

1. **Advertising** – ABJ, Online Newsletters
2. **Awareness** – Partnering with Austin Apt. Association, BOMA, Condo Associations
3. **Availability** – Responding to phone/email and providing onsite technical assessments
4. **Events**
  - Lunch & Learns
  - Trainings at Properties
  - URO Outreach Contractors
  - Bin Giveaway Initiatives



# Affected Properties Recycling Plan

(as of 4/1/14)

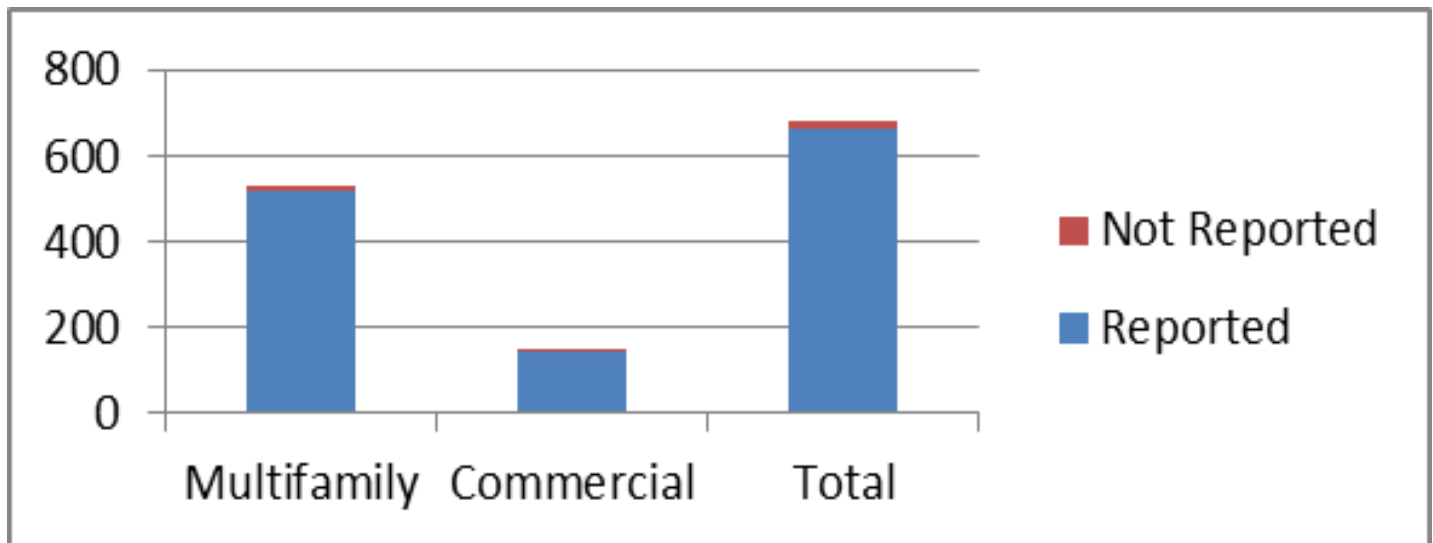
	MF	Commercial	Total
<b>Total Subject to URO</b>	791	243	1034
<b>Total Submitting Plan</b>	549	198	747
<b>% Submitting Plan</b>	69%	81%	72%



# Oct. 2012 Affected Properties

(as of 3/15/14)

	Affected	Reported FY14	Not Reported	% Reported
<b>Multifamily</b>	527	515	12	98%
<b>Commercial</b>	151	145	6	96%
<b>Total</b>	678	660	18	97%





# 2012 Affected Properties: Not Meeting Requirements (as of 4/1/14)

Requirement	Commercial		Multifamily		TOTAL	
	#	%	#	%	#	%
Insufficient Service Capacity	40	23%	141	27%	181	26%
More than 25' Rule (Waiver Requested)	32	18%	92	18%	124	18%
No Annual Education	2	1%	4	1%	6	1%
Not Bilingual Signs	48	27%	42	8%	90	13%
No Recycling Plan*	14	8%	104	20%	118	17%
Out of compliance with one or more requirements	112	63%	315	60%	<b>427</b>	<b>61%</b>
<b>Total Currently Affected</b>	<b>177</b>	<b>---</b>	<b>524</b>	<b>---</b>	<b>701</b>	<b>---</b>

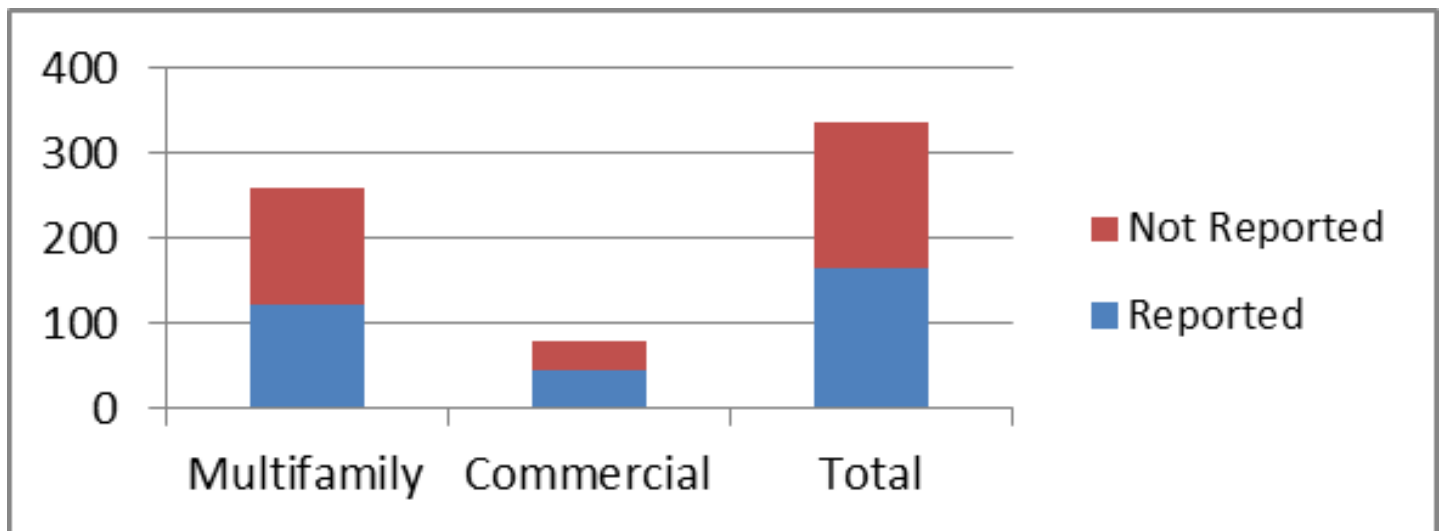
\*Reporting dates include multiple years



# Oct. 2013 Affected Properties

(as of 3/15/14)

	Affected	Reported FY14	Not Reported	% Reported
<b>Multifamily</b>	258	120	138	47%
<b>Commercial</b>	77	45	32	58%
<b>Total</b>	335	165	170	49%





# 2013 Affected Properties: Not Meeting Requirements (as of 4/1/14)

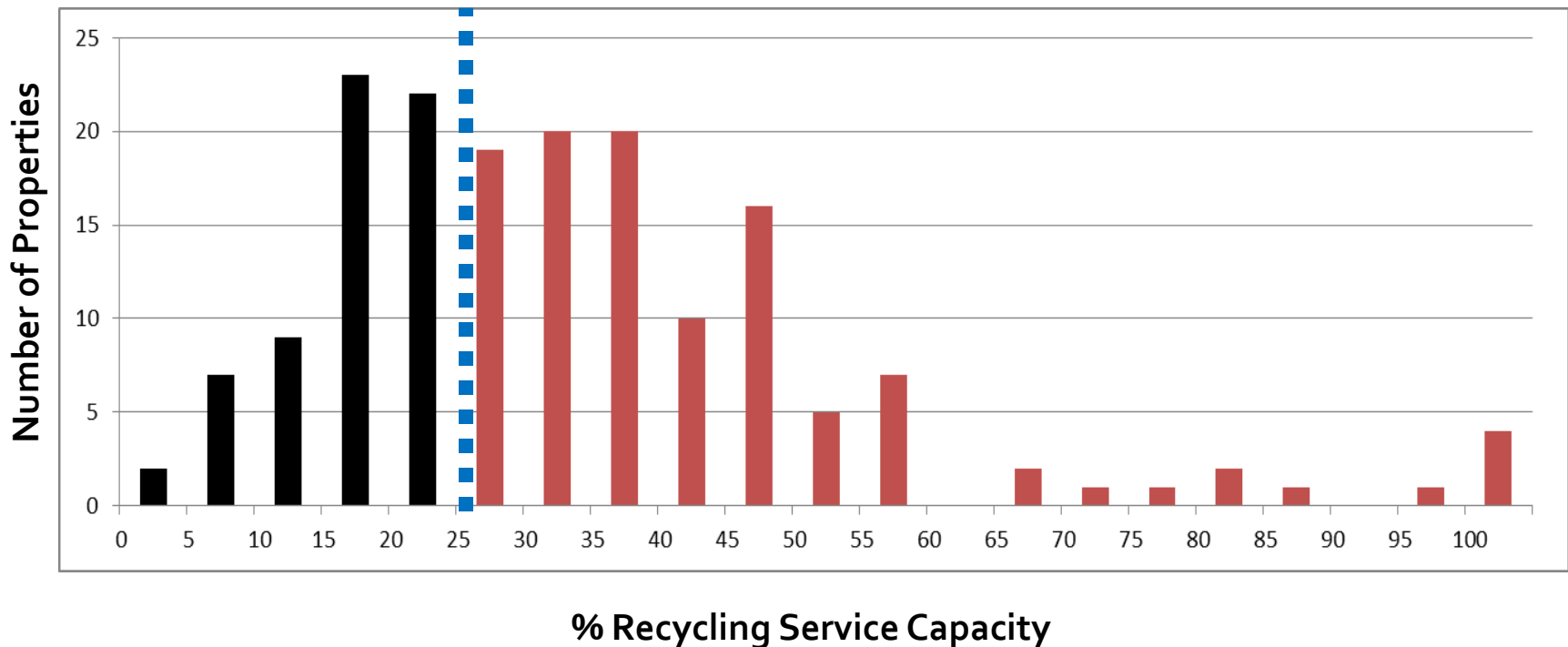
Requirement	Commercial		Multifamily		TOTAL	
	#	%	#	%	#	%
Insufficient Service Capacity	13	20%	34	13%	47	14%
More than 25' Rule (Waiver Requested)	11	17%	12	4%	23	7%
No Annual Education	0	0%	2	1%	2	1%
Not Bilingual Signs	13	20%	6	2%	19	6%
No Recycling Plan**	31	47%	138	52%	169	51%
Out of compliance with one or more requirements	41	62%	181	68%	222	67%
<b>Total Currently Affected</b>	66		267		333	

\*\*Reporting includes YTD from Oct. 1, 2013



# Reported Service Capacity (as of 3/18/14)

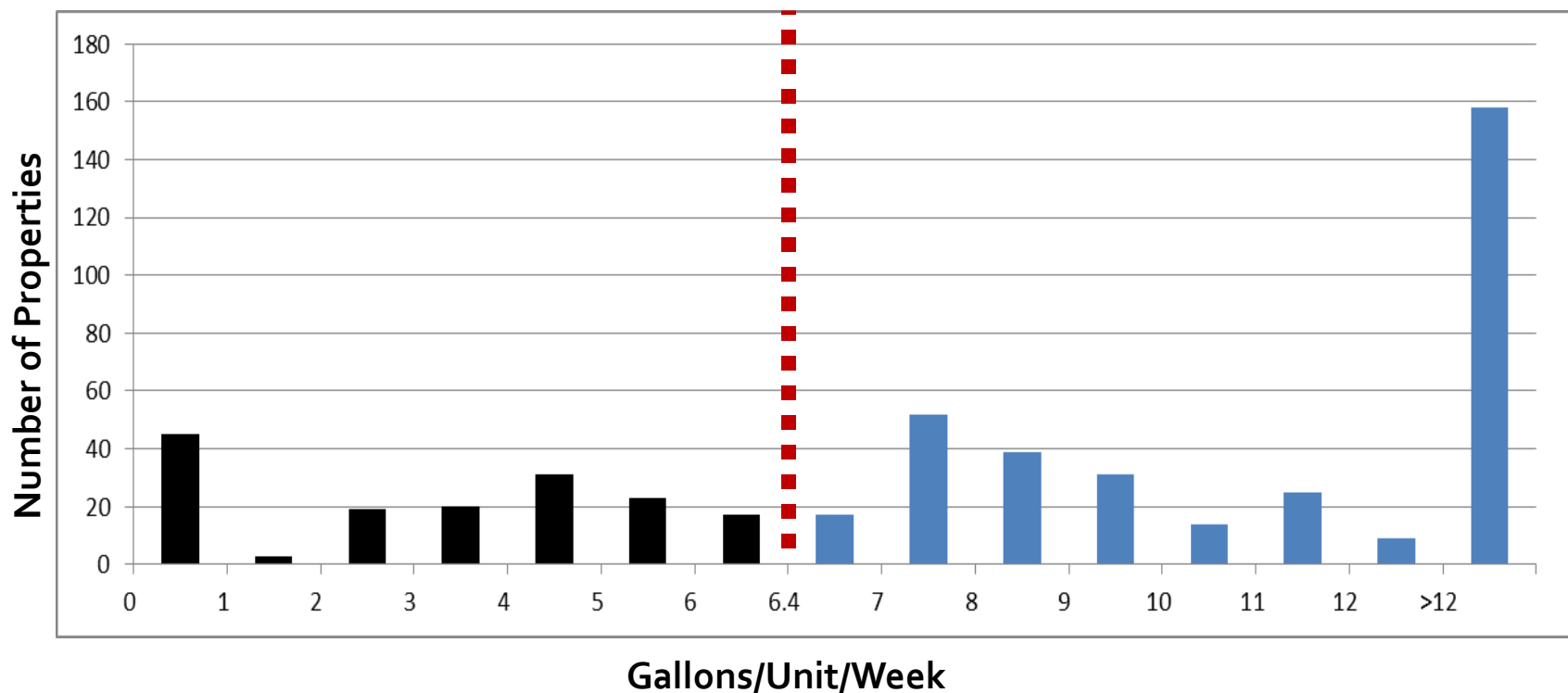
## Office Buildings





# Reported Service Capacity – Multifamily (as of 3/18/14)

## Multifamily Properties





# URO Compliance - Priorities

## **2012 Properties - Enforcement**

- No Recycling Plan, No good faith efforts
- Certified letters, referral to Code Compliance

## **2013 Properties - Education and Outreach**

- Non-compliance letters mailed & Onsite Visits
- 600+ Non-Compliance letters (certified mail ~4/6)

## **2014 Properties – Advanced Notice**

- Letters to new properties in April & August
- Postcard Reminders for “Annual Diversion Plan”



# URO Compliance – Next Steps

## 1. **Certified Letters to 2012 Non-Compliant Properties**

- Mailed week of 3/24
- ARR staff visits property and completes written site assessment
- 30 days to comply, otherwise referral to Code Compliance

## 2. **Joint ARR/Code Compliance site visit**

- Code Compliance issues notice of violation/citation
- Code Compliance continues enforcement process
- ARR staff provides expert witness, support



# Questions?

**Aiden Cohen**  
**Business Outreach Program Manager**  
Austin Resource Recovery  
512-974-1929  
[Aiden.Cohen@austintexas.gov](mailto:Aiden.Cohen@austintexas.gov)