

C11/1

SUBDIVISION REVIEW SHEET

CASE NO.: C8-2013-0229.0A

P.C. DATE: May 13, 2014

SUBDIVISION NAME: RReef Domain Retail District

AREA: 101.638

LOT(S): 7

OWNER/APPLICANT: RREEF Domain LP (Ben Bufkin)

AGENT: Bury-Aus, Inc. (Lauren Beavers)

ADDRESS OF SUBDIVISION: 11100 ALTERRA PKWY

GRIDS: MK33

COUNTY: Travis

WATERSHED: Walnut Creek

JURISDICTION: Full Purpose

EXISTING ZONING: MI-PDA

NEIGHBORHOOD PLAN: North Burnet Gateway NPA

PROPOSED LAND USE: Retail

VARIANCES: None

SIDEWALKS: Sidewalks will be provided on both sides of all internal circulation routes and the subdivision side of boundary streets, (Burnet Road).

DEPARTMENT COMMENTS: The request is for approval of the Domain Retail District. The proposed plat is composed of 7 lots on 101.638 acres. The applicant's propose to resubdivide the existing Lot 2A creating 6 additional lots. The newly created lots average in size from 1.2 acres to 5.06 acres. All City of Austin utilities are available to the site. The developer will be responsible for all costs associated with any required improvements including the costs associated with utility connections.

STAFF RECOMMENDATION: The staff recommends approval of the plat. This plat does not meets all applicable State and City of Austin LDC requirements for resubdivision of land.

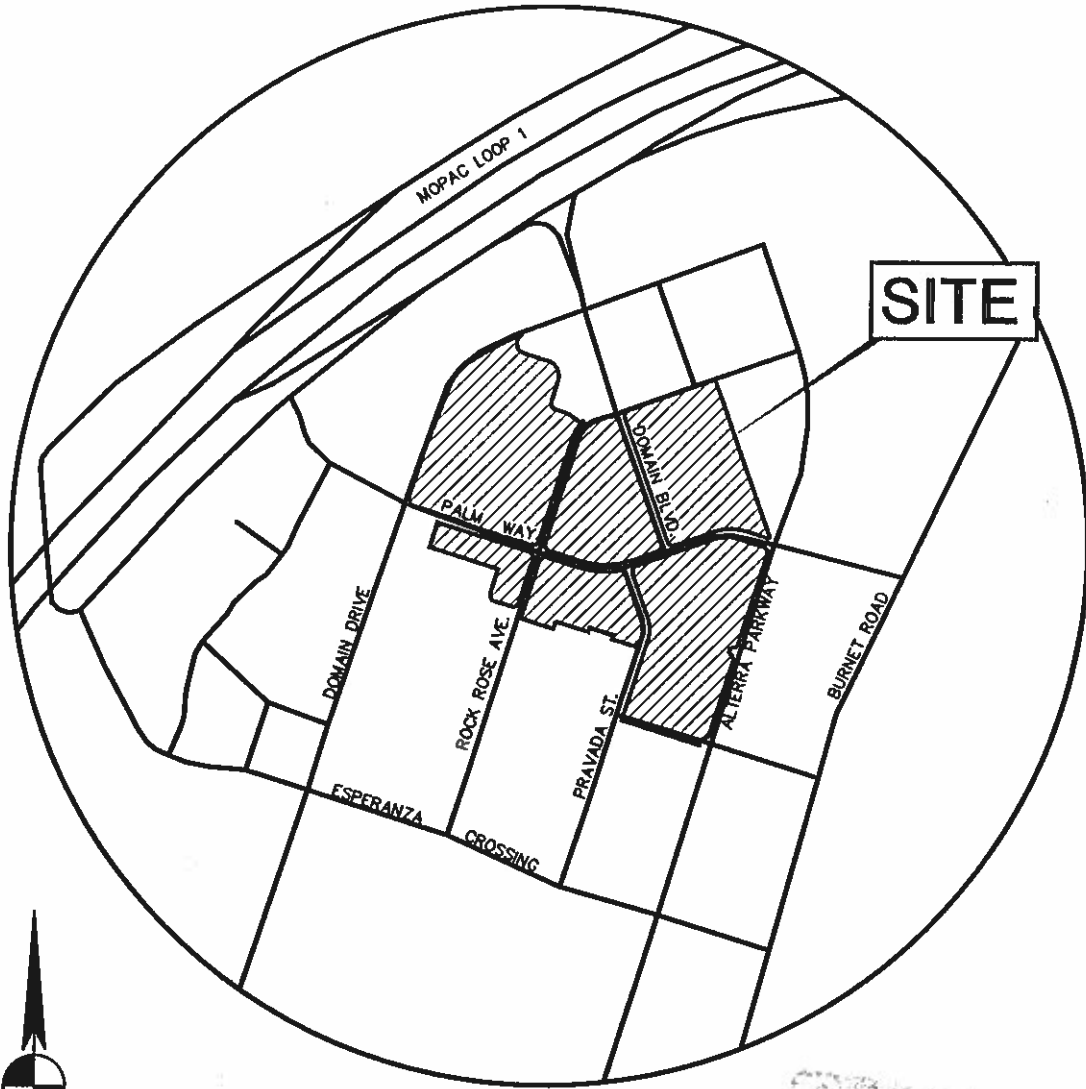
PLANNING COMMISSION ACTION:

CITY STAFF: Don Perryman

PHONE: 512-974-2786

E-MAIL: don.perryman@austintexas.gov

CH
1/2



SCANNED

BURY

221 West 6th Street, Suite 600
Austin, Texas 78701
Tel. (512) 328-0011 Fax (512) 328-0325
TBPE # F-1048 TBPLS # F-10107500
Copyright © 2013

DOMAIN RETAIL DISTRICT PLAT
ROCK ROSE AVENUE

ENDEAVOR REAL ESTATE GROUP

SITE LOCATION MAP

DATE: 12/4/2013

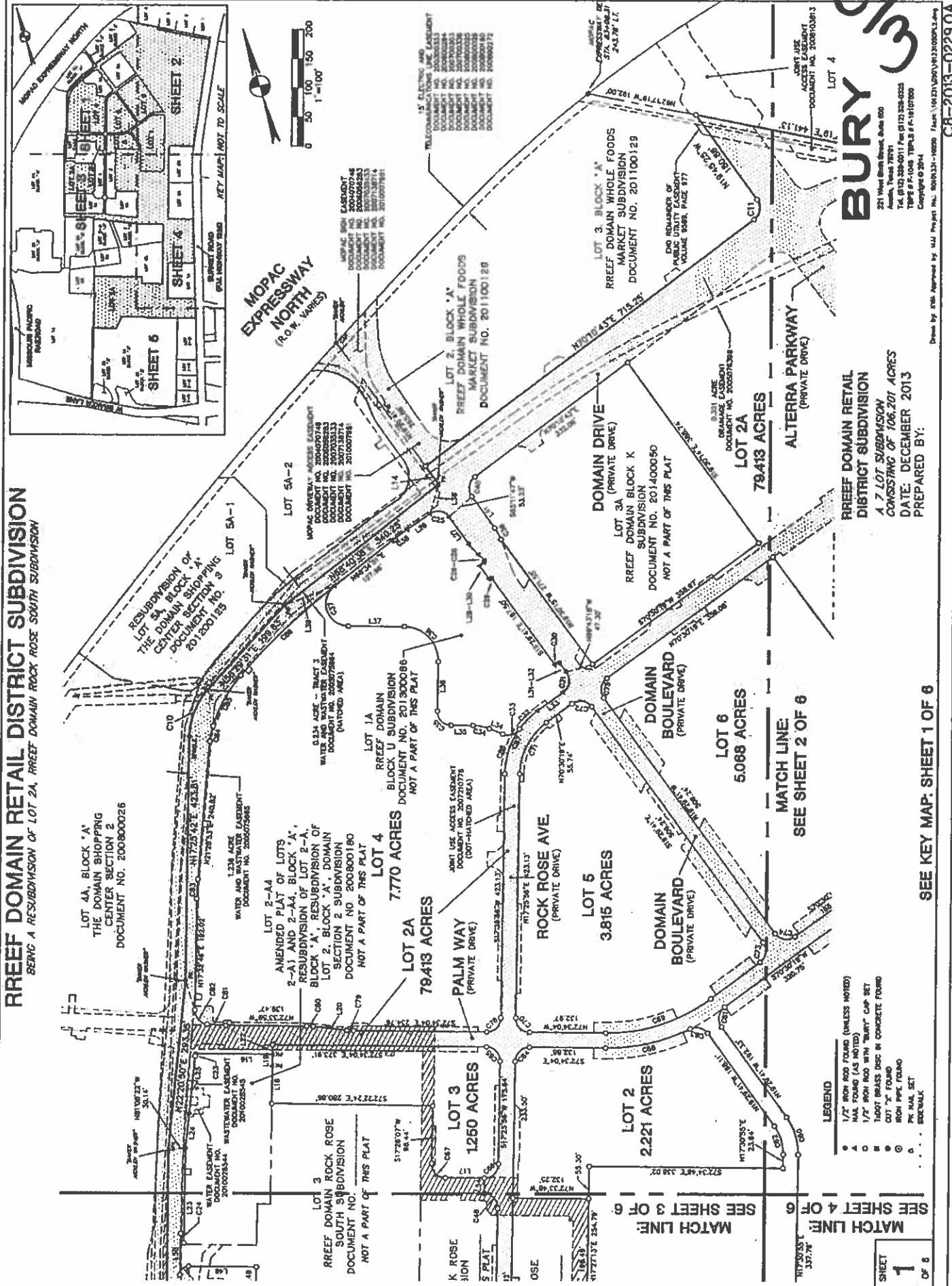
SCALE: N.T.S.

DRAWN BY: ARL

FILE

PROJECT No. 101231.110051

RREEF DOMAIN RETAIL DISTRICT SUBDIVISION
BEING A RESUBDIVISION OF LOT 2A, RREEF DOMAIN ROCK ROSE SOUTH SUBDIVISION



BURY
221 West North Street, Suite 600
Austin, Texas 78701
Tel: 512.328.0011 Fax: 512.328.0025
Toll Free: 1.800.368.1363
Copyright © 2014

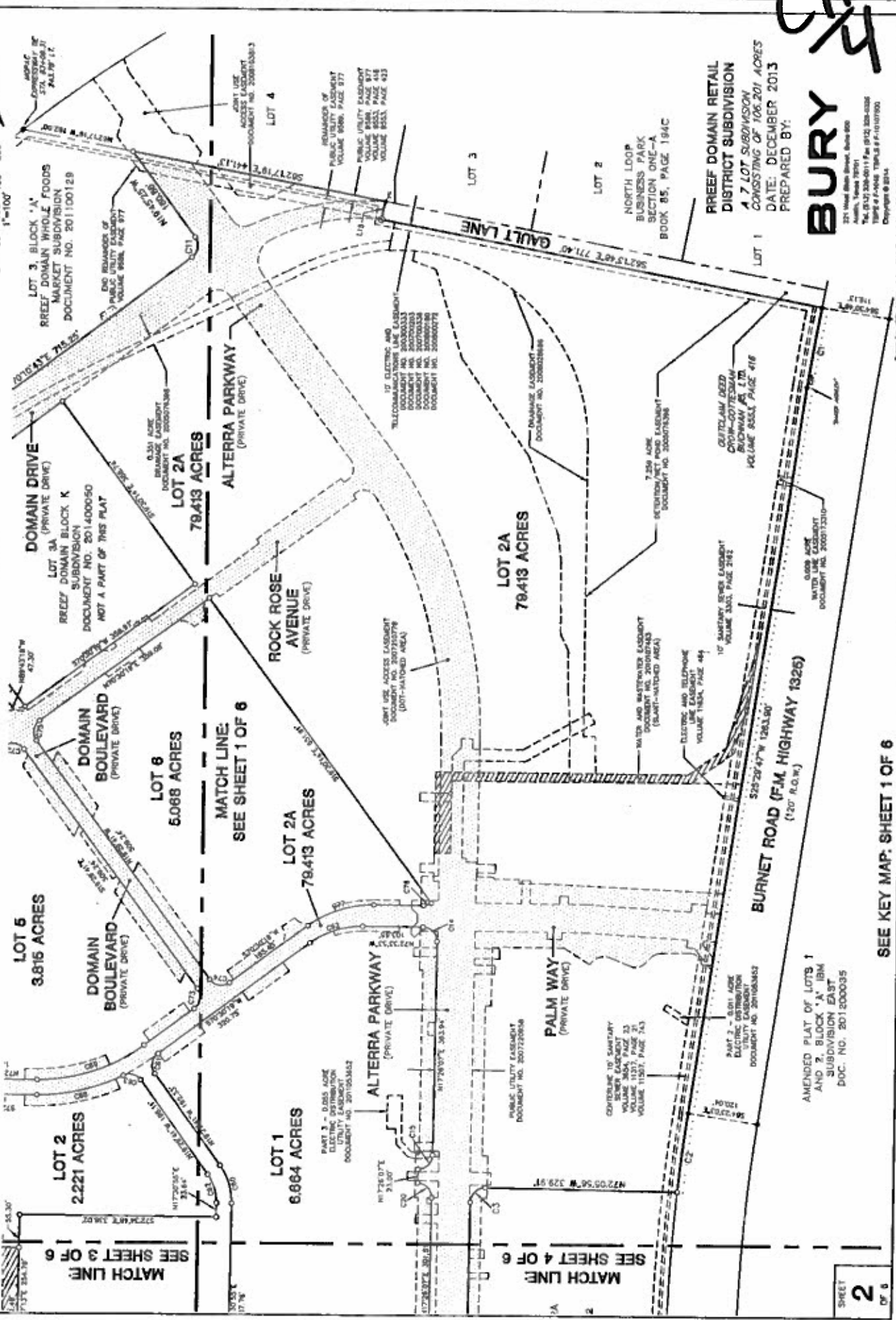
RREEF DOMAIN RETAIL DISTRICT SUBDIVISION
A 7 LOT SUBDIVISION
CONSISTING OF 106.201 ACRES
DATE: DECEMBER 2013
PREPARED BY:

SEE KEY MAP: SHEET 1 OF 6

SEE SHEET 4 OF 6
SEE SHEET 3 OF 6
SHEET 1 OF 6

Drawn by: ERM Approved by: ULL Project No.: 2008131-10000 / Date: 1/16/2014/Version: 2008131.dwg
CB-2013-0229.0A

RREEF DOMAIN RETAIL DISTRICT SUBDIVISION
 BEING A RESUBDIVISION OF LOT 2A, RREEF DOMAIN ROCK ROSE SOUTH SUBDIVISION



BURY

RREEF DOMAIN RETAIL
 DISTRICT SUBDIVISION
 A 7 LOT SUBDIVISION
 CONSISTING OF 106.201 ACRES
 DATE: DECEMBER 2013
 PREPARED BY:

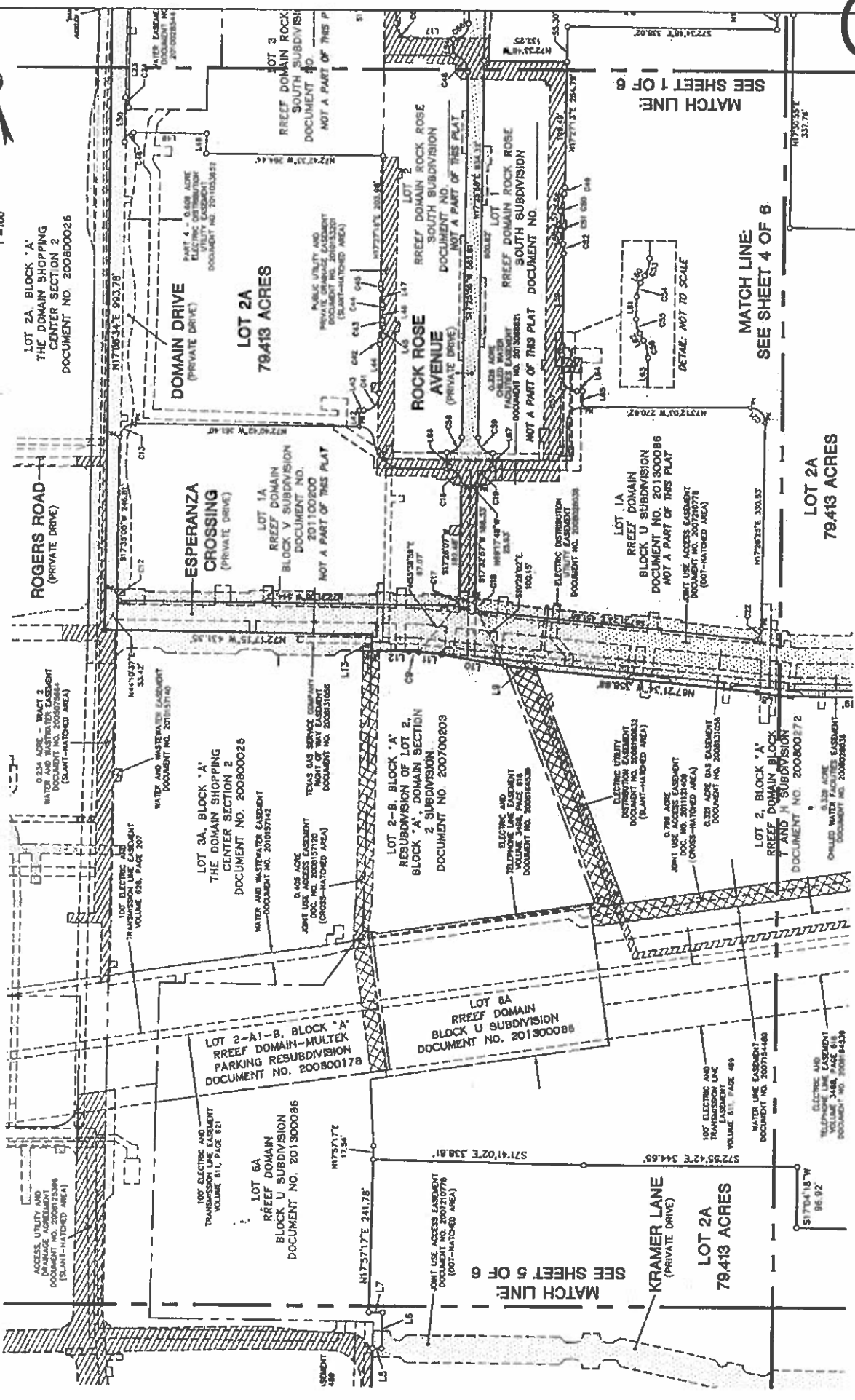
221 West Main Street, Suite 800
 Austin, Texas 78701
 Tel: (512) 338-0111 Fax: (512) 338-0388
 Email: info@buri.com
 Copyright © 2014

Drawn by: [unclear] Approved by: [unclear] Project No.: 2000221-10000 Sheet: 1 of 6 (2013-02-29) 10/13/13 10:00 AM 2013-02-29

SEE KEY MAP: SHEET 1 OF 6

AMENDED PLAT OF LOTS 1
 AND 2, BLOCK 'A', RRM
 SUBDIVISION EAST
 DOC. NO. 2011000035

REEF DOMAIN RETAIL DISTRICT SUBDIVISION
BEING A RESUBDIVISION OF LOT 2A, REEF DOMAIN ROCK ROSE SOUTH SUBDIVISION



BURY SA
221 Wood South Street, Suite 600
Austin, Texas 78701
Tel. (512) 228-0011 Fax (512) 228-0022
Time & F-1948 TPL 6.8-10107900
Copyright © 2014
Drawn by REB Approved by MJ Project No. 2010131-10000 From V04.01.0000 V04.02.000003.00

SEE KEY MAP: SHEET 1 OF 6

LOT 2A
79.413 ACRES
REEF DOMAIN RETAIL
DISTRICT SUBDIVISION
A 7 LOT SUBDIVISION
CONSISTING OF 106.201 ACRES
DATE: DECEMBER 2013
PREPARED BY:

