

CH/1



## MEMORANDUM

\*\*\*\*\*

TO: Betty Baker, Chairperson  
Zoning and Platting Commission Members

FROM: Sherri Sirwaitis  
Planning and Development Review Department

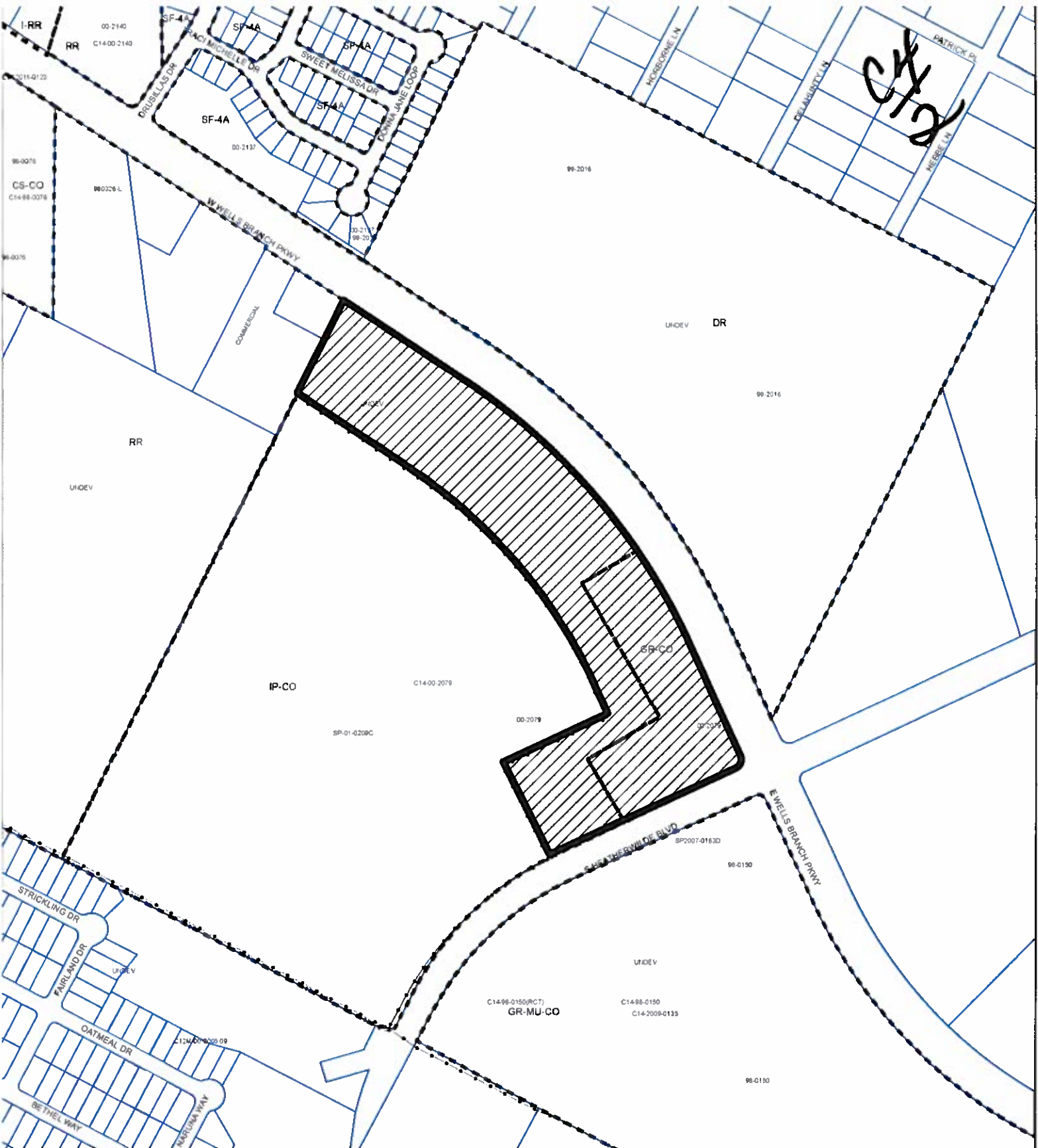
DATE: May 13, 2014




RE: C14-2014-0037 (The Sealy) Postponement Request

\*\*\*\*\*

The staff would like to request a postponement of the above mentioned case to June 17, 2014. The staff is asking for this postponement because a Transportation Impact Analysis (TIA) addendum is required and the staff needs additional time to complete the Transportation review for this case.

The postponement request was made in a timely manner and meets the Zoning and Platting Commission's policy.



-  SUBJECT TRACT
-  PENDING CASE
-  ZONING BOUNDARY

## ZONING

### ZONING CASE#: C14-2014-0037

1" = 400'

This product is for informational purposes and may not have been prepared for or be suitable for legal, engineering, or surveying purposes. It does not represent an on-the-ground survey and represents only the approximate relative location of property boundaries.

This product has been produced by CTM for the sole purpose of geographic reference. No warranty is made by the City of Austin regarding specific accuracy or completeness.

