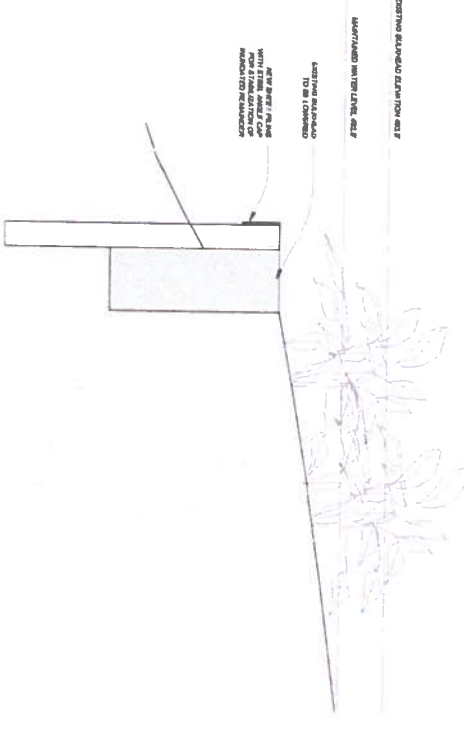
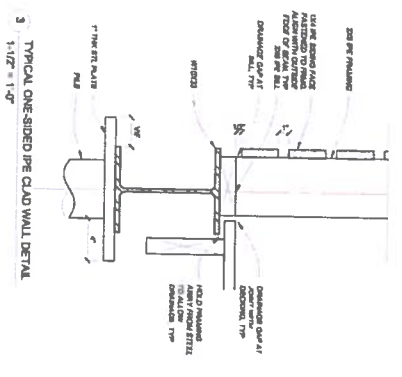


1 EXISTING SHORELINE
1" = 20'-0"

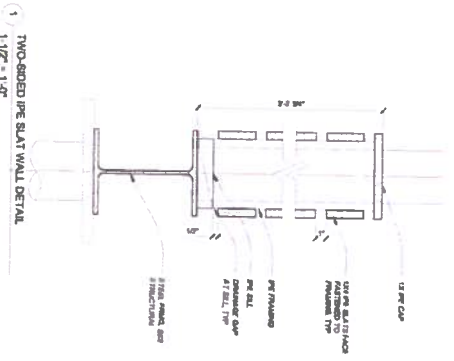
2 PROPOSED SHORELINE
1" = 20'-0"



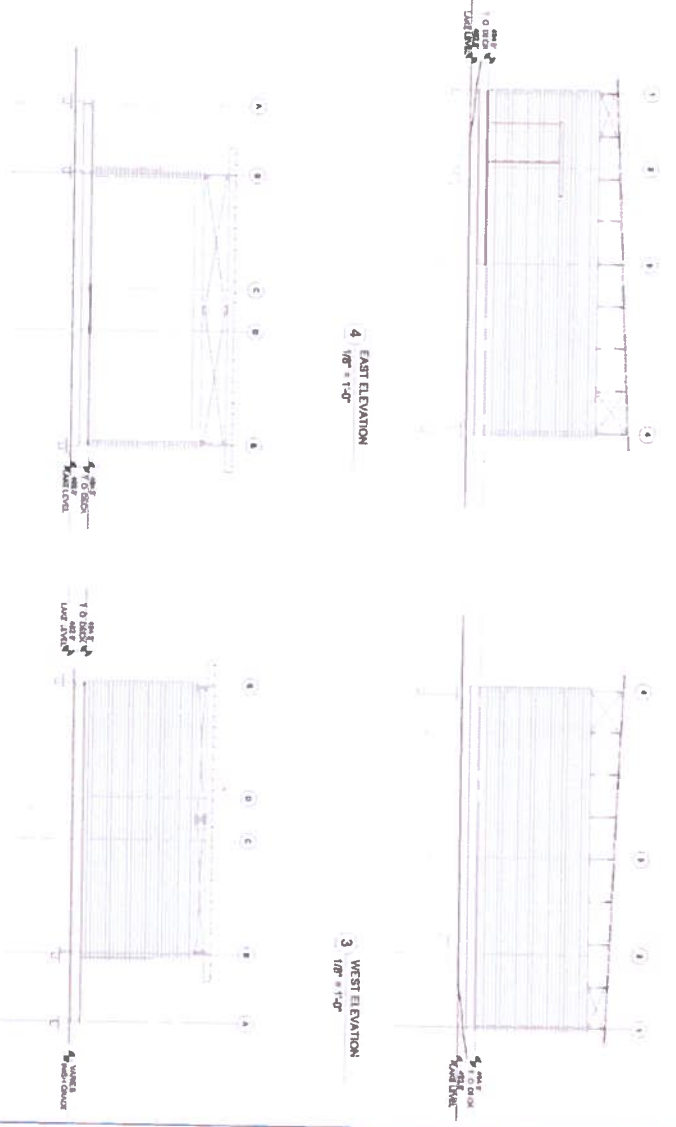
1 BULKHEAD DETAIL
3/4" = 1'-0"



3 TYPICAL ONE-SIDED PRE-CAST WALL DETAIL
1/4" = 1'-0"



1 TWO-SIDED PRE-CAST WALL DETAIL
1/4" = 1'-0"

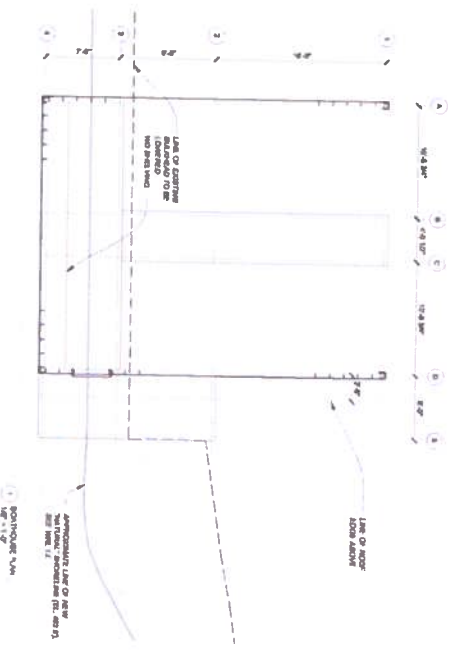


2 NORTH ELEVATION
1/8" = 1'-0"

1 SOUTH ELEVATION
1/8" = 1'-0"

4 EAST ELEVATION
1/8" = 1'-0"

3 WEST ELEVATION
1/8" = 1'-0"



1 FLOOR PLAN
1/4" = 1'-0"

All responsibility for the adequacy of these plans remains with the engineer who prepared them. In approving these plans, the City of Austin must verify that the designer is the designer of record.

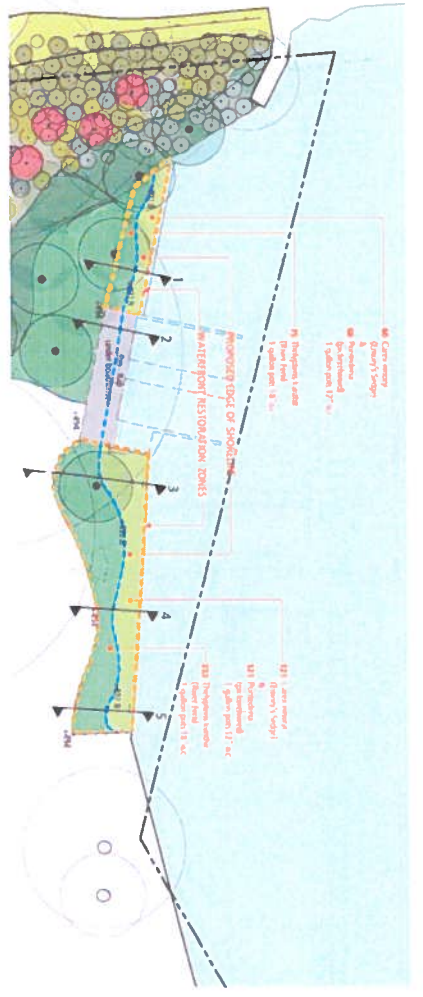
3337 Westlake Drive
DOCK PLAN, ELEVATIONS & DETAILS

DESIGNED BY: [blank]
APPROVED: [blank]
SCALE: NTS
3337 Westlake Dr
DATE: Nov. 10, 2014
SHEET: 8 of 4

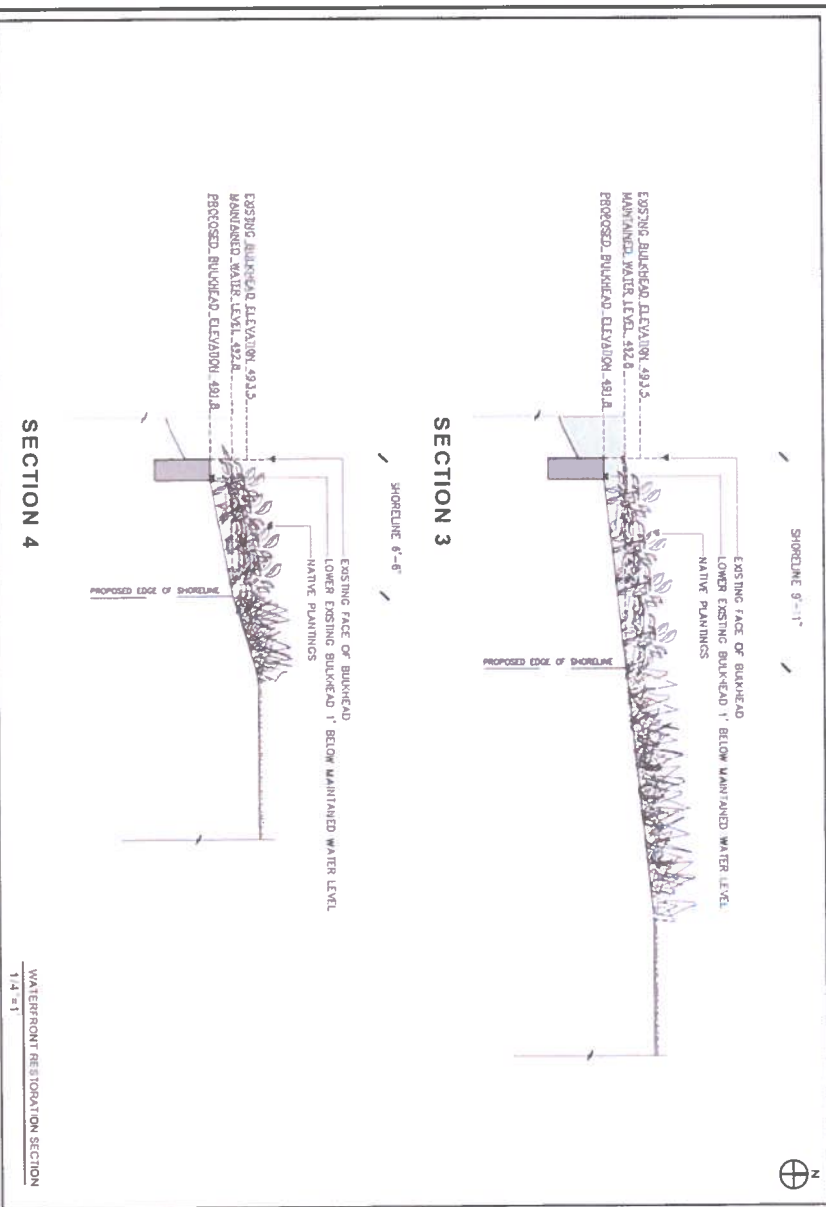
AUPPERLE COMPANY
Engineering, Planning & Development Services
10086 Circleview Drive, Austin, Texas 78733 512-329-8241
Texas Professional Engineers Registration Number 1901



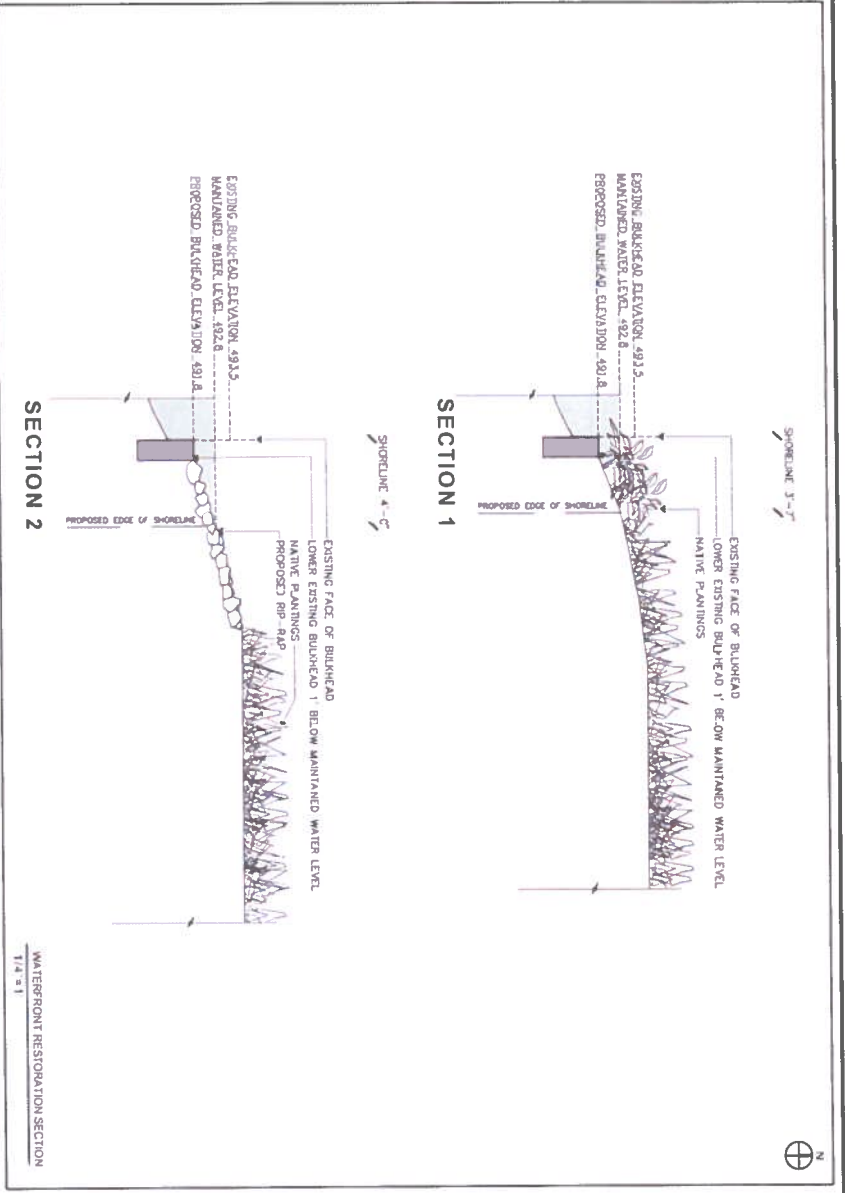
NO.	DATE	REVISION



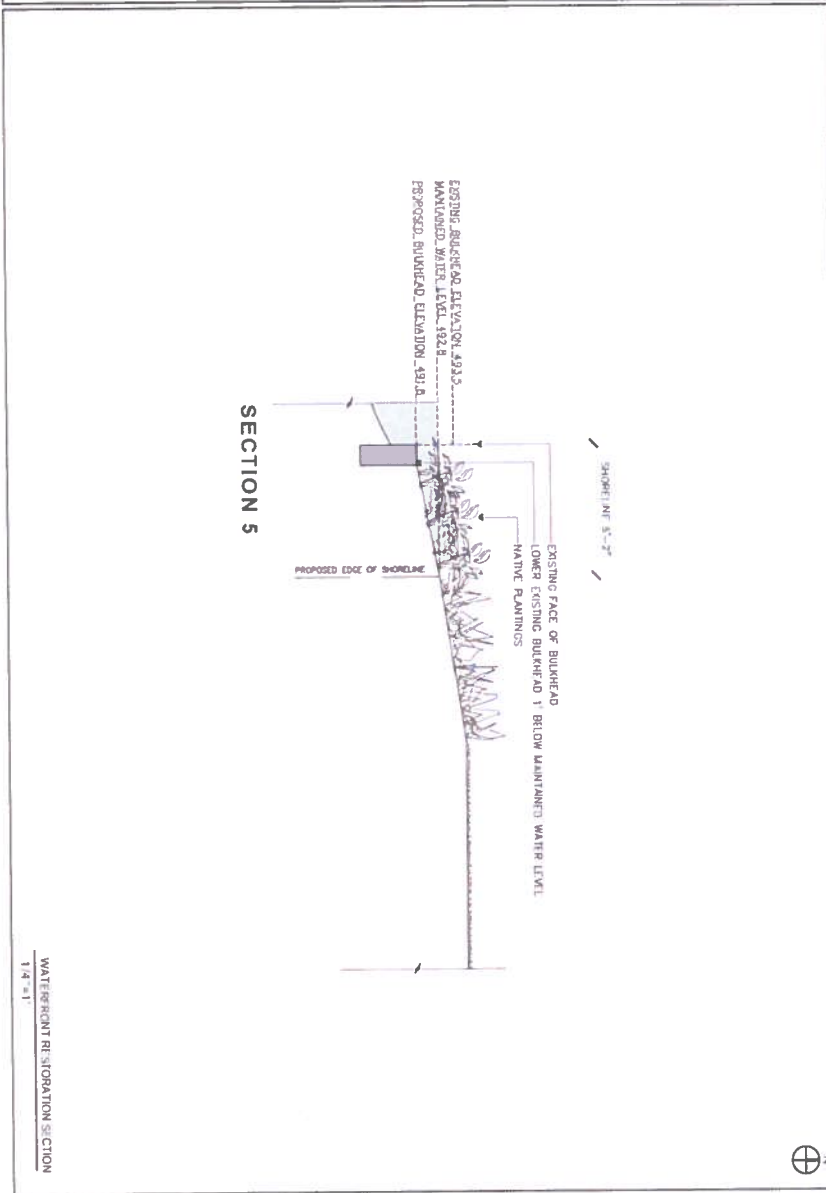
① Plan View
1" = 20'



WATERFRONT RESTORATION SECTION
1/4" = 1'



WATERFRONT RESTORATION SECTION
1/4" = 1'



WATERFRONT RESTORATION SECTION
1/4" = 1'

At responsibility for the adequacy of these plans remain with the designer who prepared them. In approval thereof, the City of Austin must rely upon the adequacy of the work of the design engineer.

3337 Westlake Drive
SHORELINE RESTORATION PLAN

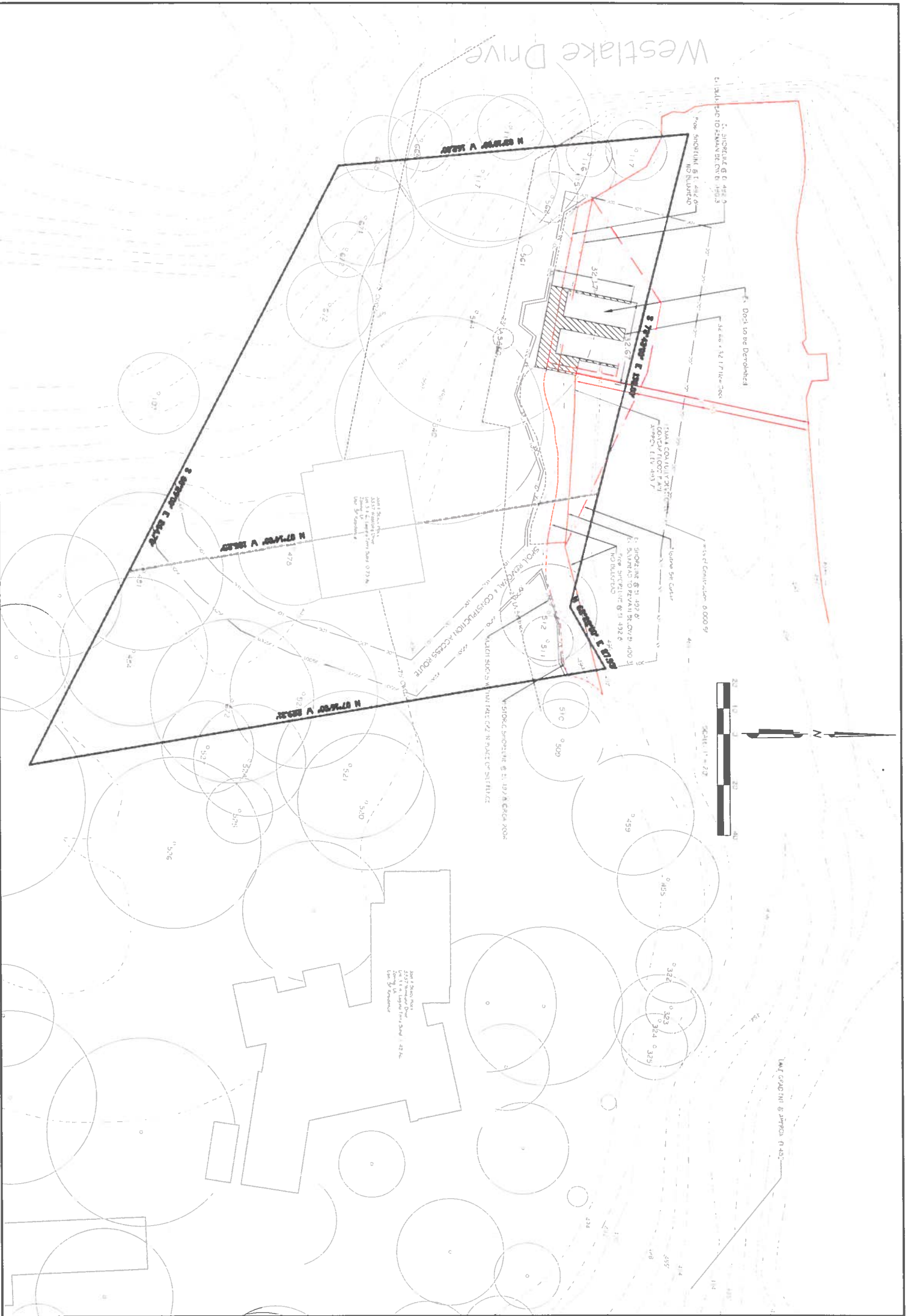
AUPPERLE COMPANY
Engineering, Planning & Development Services
10088 Circleview Drive, Austin, Texas 78733 512.329.8241
Texas Permit # Professional Engineers Registration Number: F. 096



NO.	DATE	REVISION	APPROVED

DESIGNED: DSA
APPROVED:
SCALE: NTS
3337 Westlake Drive
DATE: Apr. 10, 2014
SHEET: 4 of 4

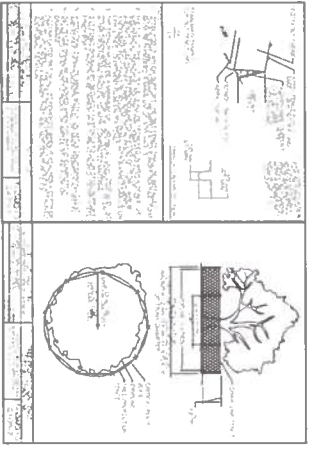
SF-2013-0453D
4



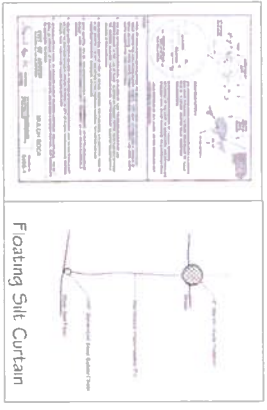
Existing Shoreline: Length: Lot 5 = 774', Lot 6 = 1,011'
 Allowable Deck Width: 200', Lot 5 = 15', Lot 6 = 32.0'
 Proposed Deck Width: Lot 5 = 0', Lot 6 = 32.0'
 Proposed Deck Width: 1,071', Lot 6 = 321.7'
 Proposed Deck: Depth into Channel = 27.5' or 25.75'

All responsibility for the adequacy of these plans remain with the engineer who prepared them. In approving these plans, the City of Austin may rely upon the adequacy of the work of the design engineer.

1. THIS PLAN IS A PRELIMINARY PLAN AND IS NOT TO BE USED FOR CONSTRUCTION.
2. THE CITY OF AUSTIN HAS REVIEWED THIS PLAN AND HAS APPROVED IT FOR THE CITY OF AUSTIN.
3. THE ENGINEER HAS REVIEWED THIS PLAN AND HAS APPROVED IT FOR THE ENGINEER.
4. THE ENGINEER HAS REVIEWED THIS PLAN AND HAS APPROVED IT FOR THE ENGINEER.
5. THE ENGINEER HAS REVIEWED THIS PLAN AND HAS APPROVED IT FOR THE ENGINEER.
6. THE ENGINEER HAS REVIEWED THIS PLAN AND HAS APPROVED IT FOR THE ENGINEER.
7. THE ENGINEER HAS REVIEWED THIS PLAN AND HAS APPROVED IT FOR THE ENGINEER.
8. THE ENGINEER HAS REVIEWED THIS PLAN AND HAS APPROVED IT FOR THE ENGINEER.
9. THE ENGINEER HAS REVIEWED THIS PLAN AND HAS APPROVED IT FOR THE ENGINEER.
10. THE ENGINEER HAS REVIEWED THIS PLAN AND HAS APPROVED IT FOR THE ENGINEER.
11. THE ENGINEER HAS REVIEWED THIS PLAN AND HAS APPROVED IT FOR THE ENGINEER.
12. THE ENGINEER HAS REVIEWED THIS PLAN AND HAS APPROVED IT FOR THE ENGINEER.
13. THE ENGINEER HAS REVIEWED THIS PLAN AND HAS APPROVED IT FOR THE ENGINEER.



NO.	DESCRIPTION	QUANTITY	UNIT
1	1/2" GALVANIZED STEEL	100	LB
2	1/4" GALVANIZED STEEL	200	LB
3	3/8" GALVANIZED STEEL	150	LB
4	1/2" GALVANIZED STEEL	100	LB
5	3/4" GALVANIZED STEEL	50	LB
6	1" GALVANIZED STEEL	25	LB
7	1 1/2" GALVANIZED STEEL	10	LB
8	2" GALVANIZED STEEL	5	LB
9	3" GALVANIZED STEEL	2	LB
10	4" GALVANIZED STEEL	1	LB



3337 Westlake Drive SITE PLAN

AUPPERLE COMPANY
 Engineering, Planning & Development Services
 10088 Circleview Drive, Austin, Texas 78733 512.329.5241
Texas Professional Engineers Registration Number 1799



NO.	DATE	BY	REVISION	APP'D