

Colorado River Geomorphology

Longhorn Dam to US183
at Roy G. Guerrero Colorado River Metro Park
Austin, TX

Morgan S. Byars, P.E.
City of Austin Watershed Protection Department
Park Board Meeting 05/27/2014



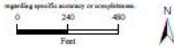
Legend

- City of Austin Parks
- Parkland Enclosures
- Creeks
- Water Operating Valve
- ▲ Fire Hydrant
- Lead Main
- Water Main
- WW Gravity Main
- WW Force Main
- WW Manholes

1 in = 250 ft

This product is for informational purposes only and has been prepared for or on behalf of the City of Austin. It is not intended for use in any legal, engineering, or planning project. The City of Austin is not responsible for any errors or omissions in this product. This product has been prepared for the City of Austin and is not intended for use in any other project. The City of Austin is not responsible for any errors or omissions in this product. This product has been prepared for the City of Austin and is not intended for use in any other project.

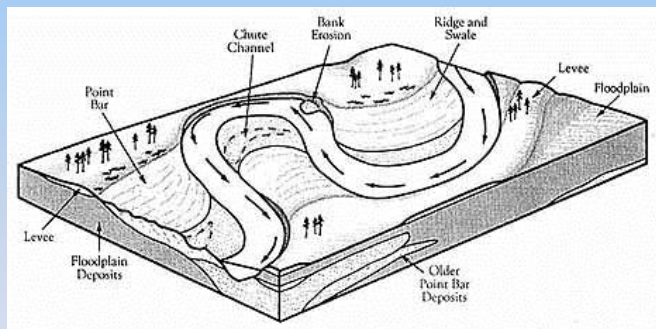
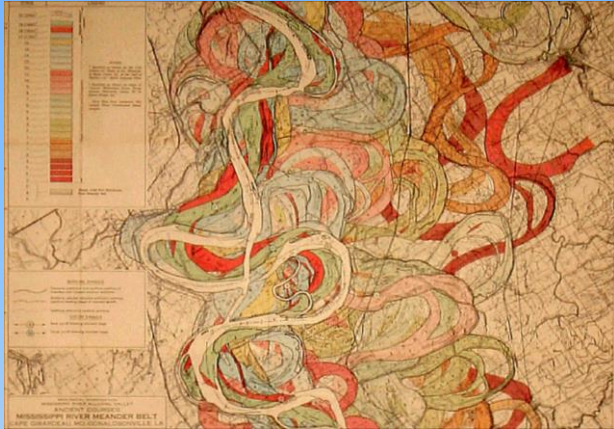
08 April 2014 MS



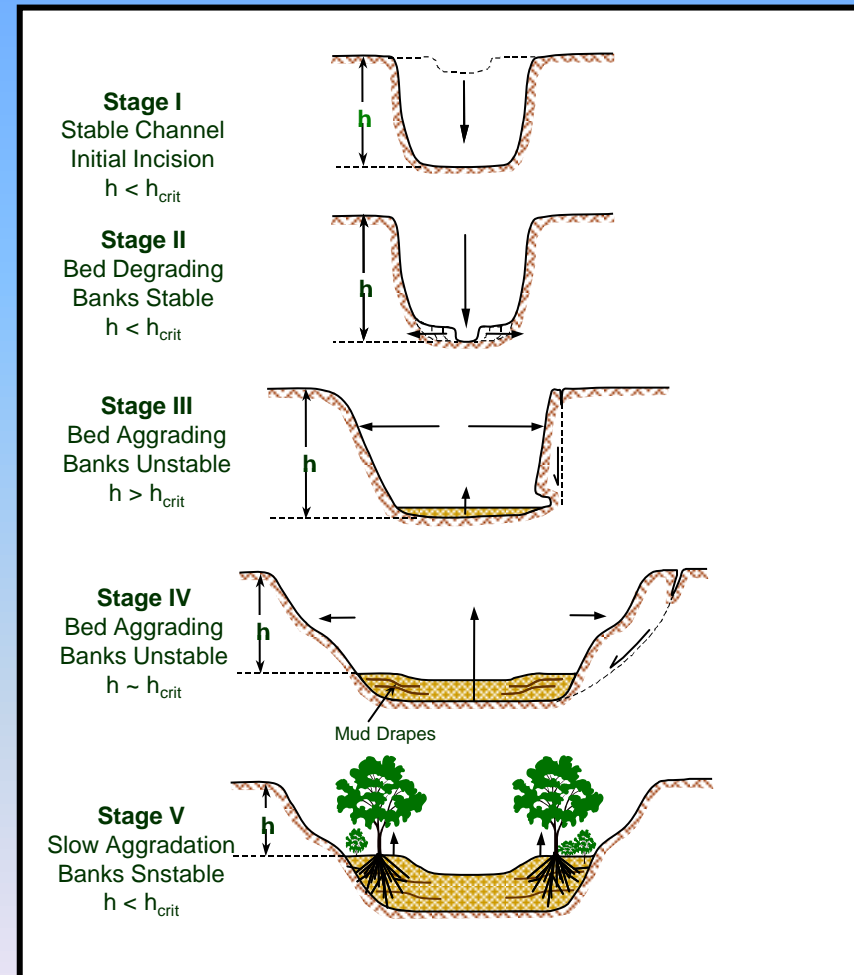
Roy G. Guerrero Park

Background - Rivers are Dynamic

- They adjust their size, shape and location through
 - Meandering

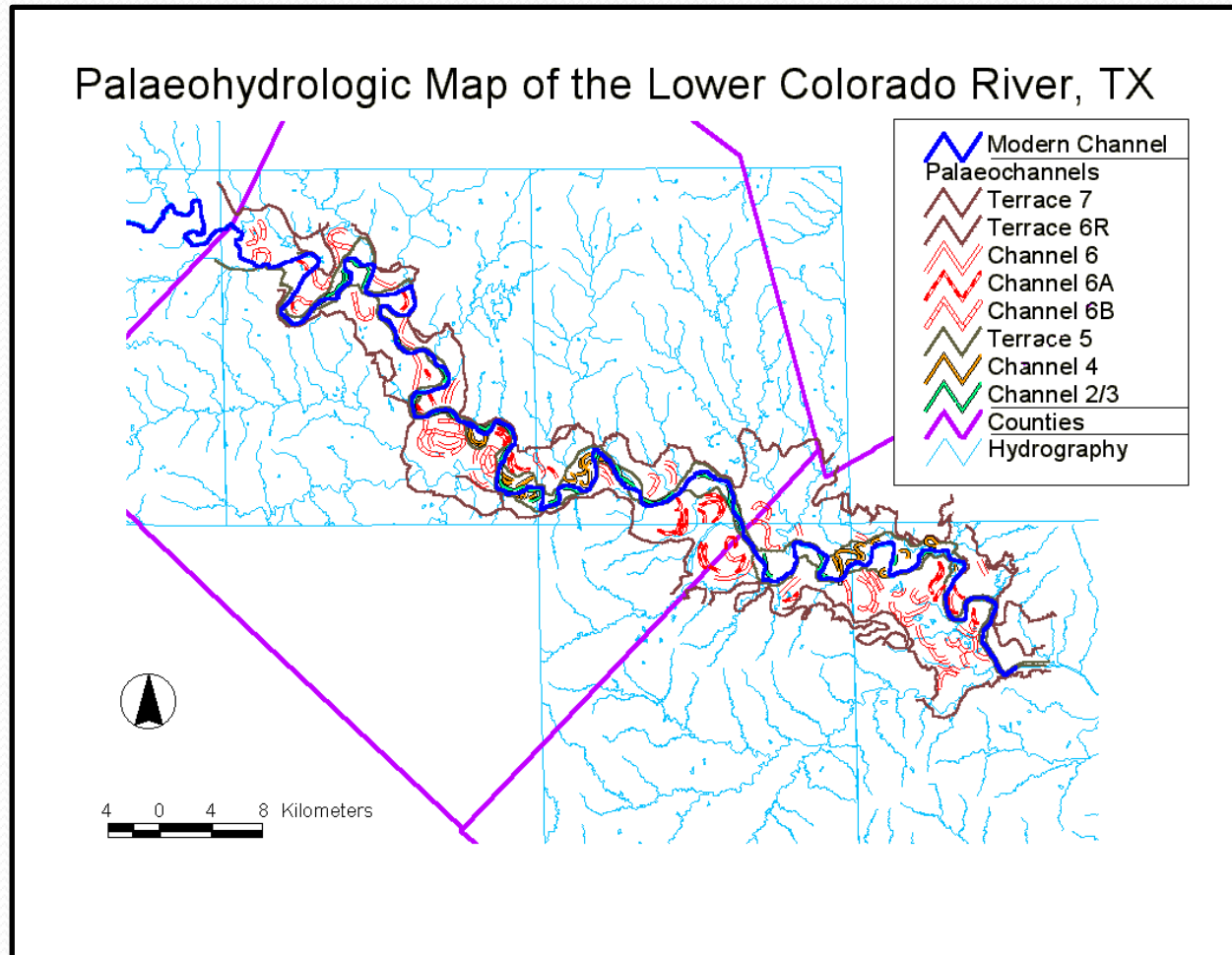


- Downcutting
- Widening



The Colorado River in Texas

- Highly variable geology from northwest to southeast
- A series of channels over time
- More erodible east of Austin
- Erosion rates impacted by geologic, climatic and anthropogenic changes

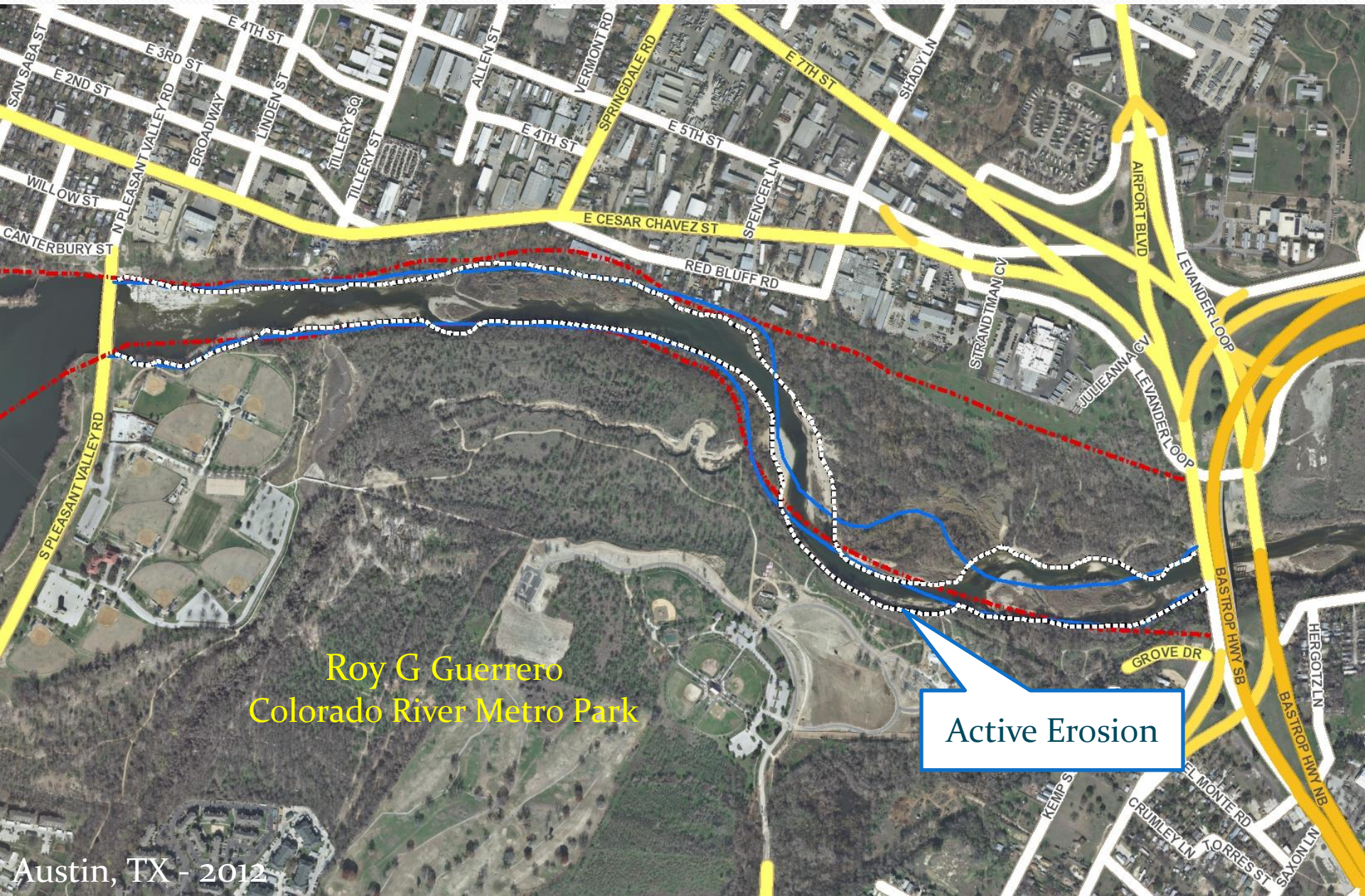


Colorado River

at Roy G Guerrero Colorado River Metro Park



Colorado River Bankline Changes

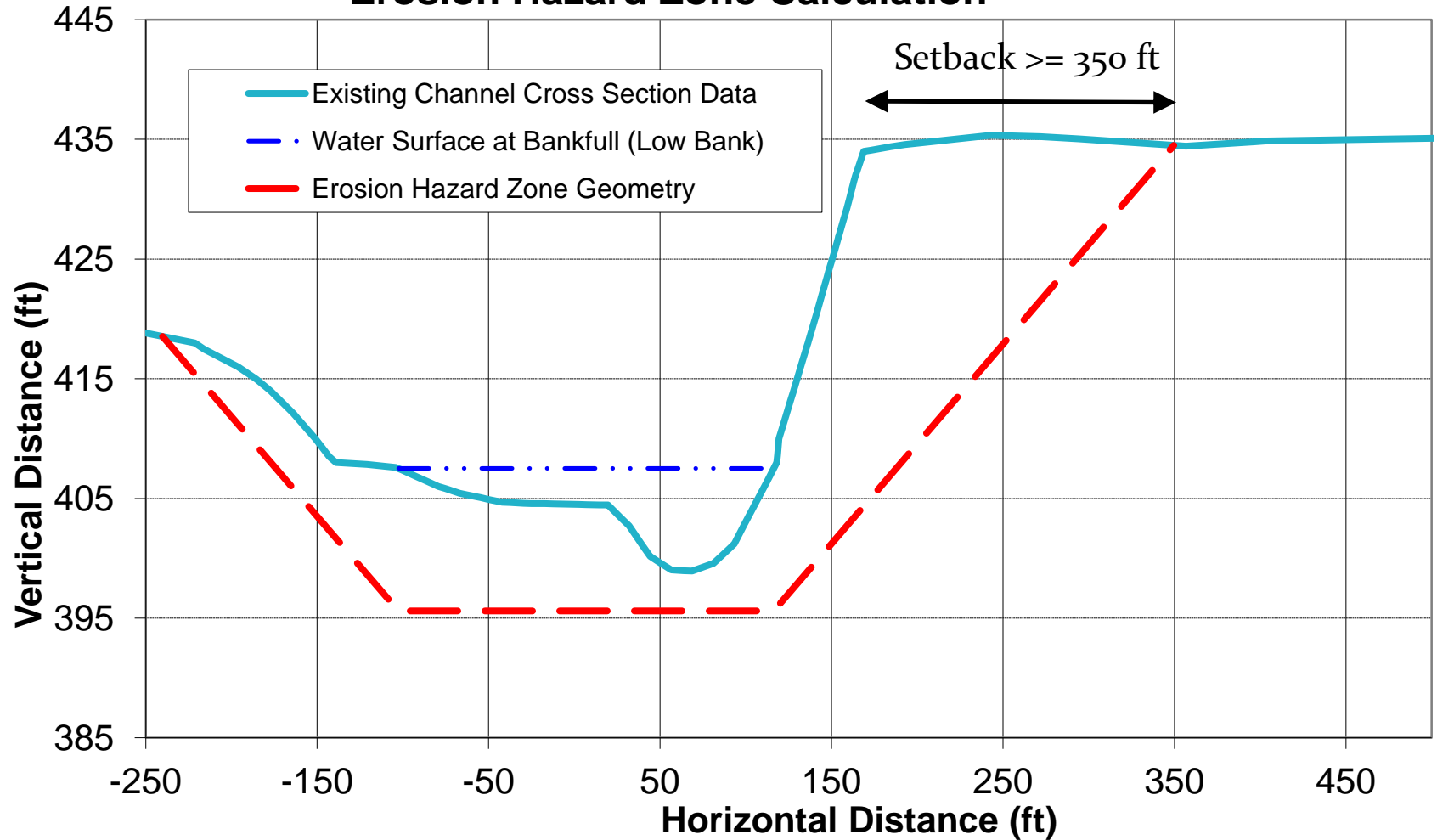


Colorado River Bankline Changes



Erosion Hazard Zone Prediction

**Colorado River - Longhorn Dam to US183
Erosion Hazard Zone Calculation**



Forecasted Erosion



Austin, TX - 2012

Summary

- Rivers are Dynamic (but somewhat predictable)
- The Lower Colorado River is more erodible than in the Upper Basin & Highlands
- Erosion on the Colorado River at Roy G. Guerrero Colorado River Metro Park will continue and may impact programmed park space and infrastructure in the future
- Future park space planning should consider this known process