

# City of Austin Urban Trails Master Plan

Public Safety Commission  
June 2, 2014



# Catalyst to the UTMP:



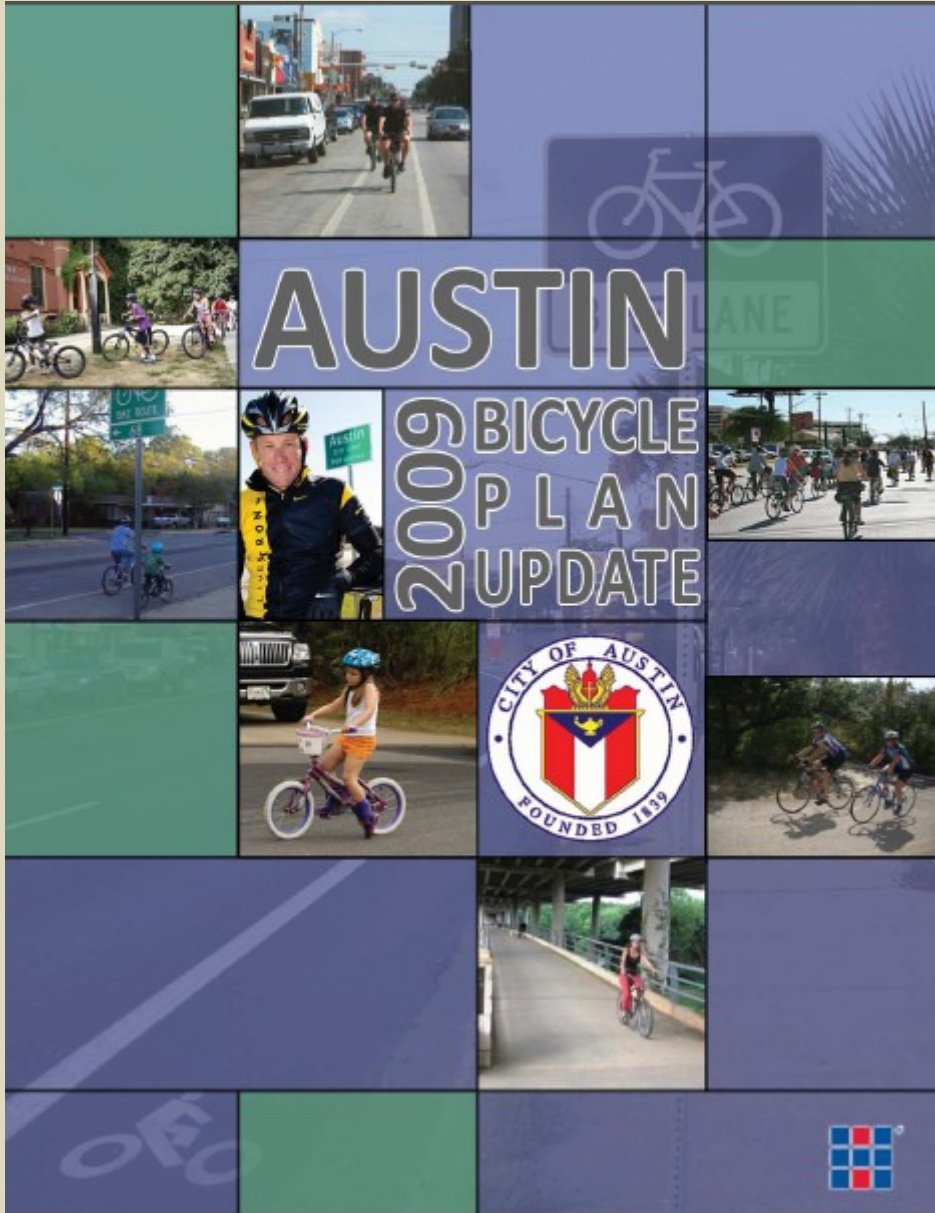
# Resolution 20080424-064:

- PWD and PARD to develop comprehensive, interconnected trail plan.
- Coordinate with other Departments (AWU, AE, ARR, WPD) to implement trail plan.
- Provide:
  - Interdepartmental consultation and coordination ,
  - Development of map, and
  - Identification of other processes/plans that would aid implementation.



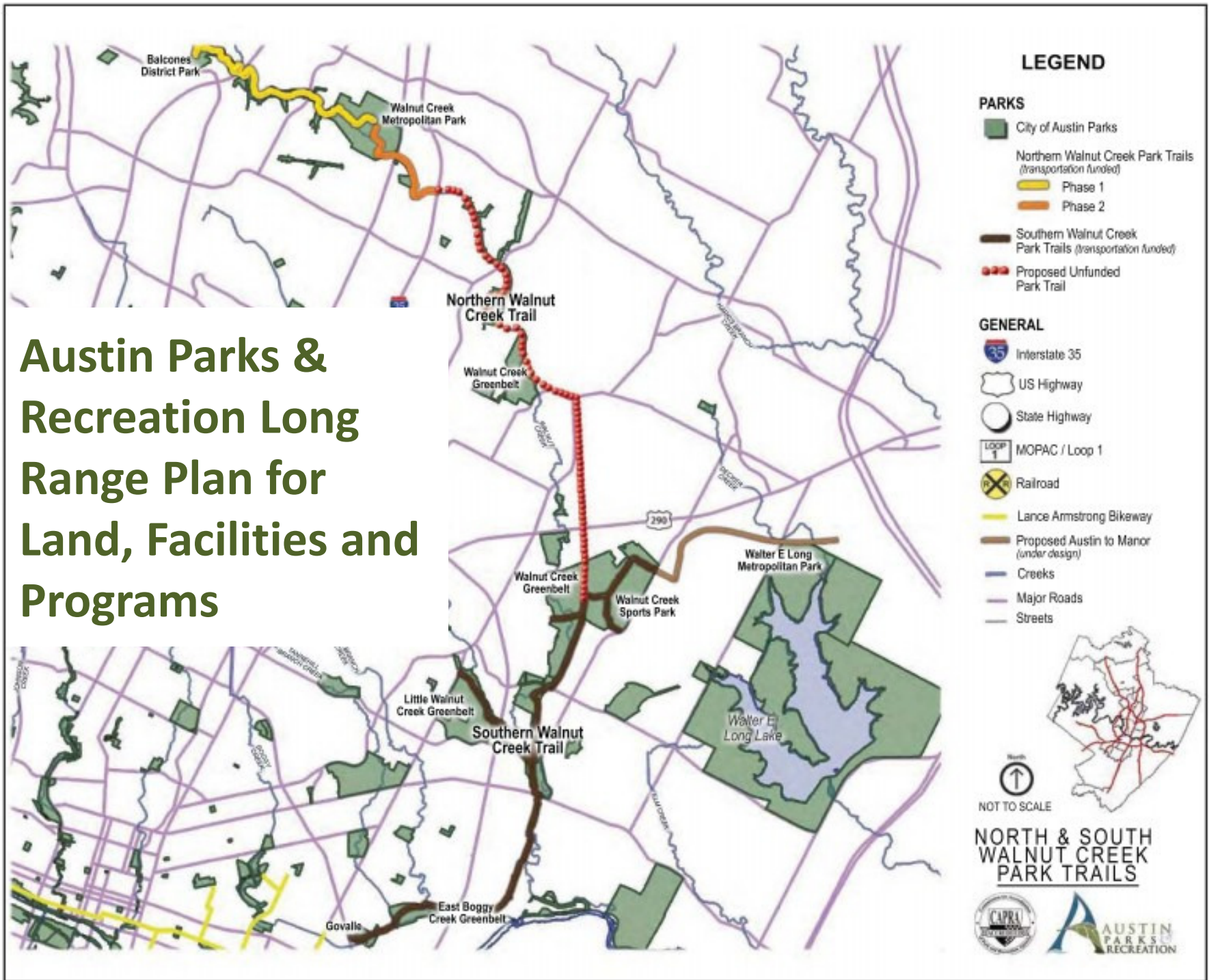
# Urban Trail Related Plans/Policies





- The 2009 Bicycle Master Plan recommended over 200 miles of multi-use paths.
- The Draft 2014 Bicycle Master Plan Update will reference the Urban Trails recommended in the UTMP.

# Austin Parks & Recreation Long Range Plan for Land, Facilities and Programs





“Urban trails serve **recreation and transportation** functions, including biking and hiking, and also **provide important environmental benefits** by creating open space linkages and expanding the City of Austin’s green infrastructure network.”

- **Imagine Austin**



# Goals of the Urban Trail Master Plan



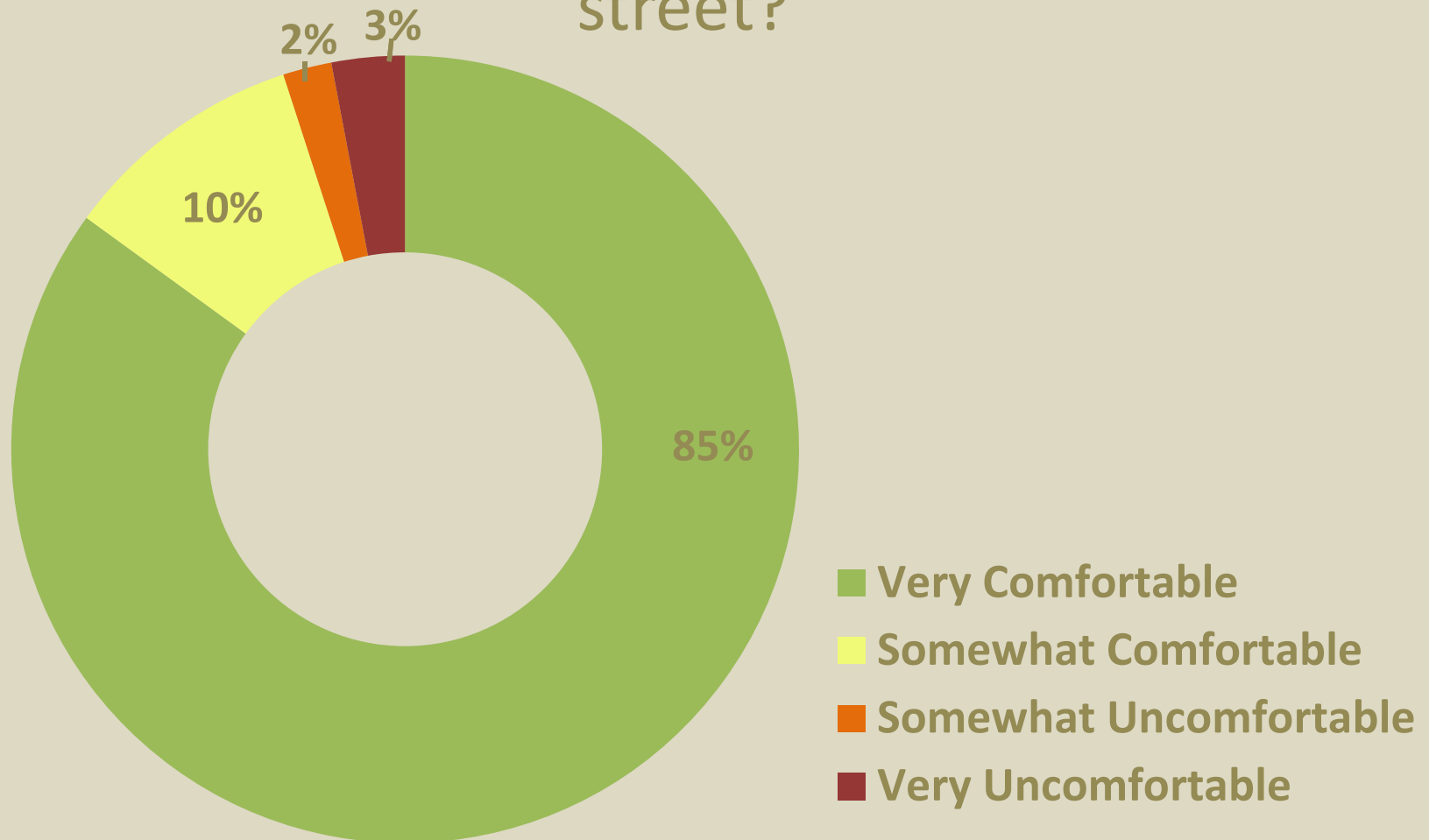


1. Implement existing plans/policies,
2. Create Urban Trail design guidelines, and
3. Plan for and implement Urban Trail maintenance, and
4. Encourage Active Transportation by building and connecting to appropriate facilities.



# Public Survey Results:

How comfortable do you feel riding your bicycle on a path or trail that is separate from the street?



# What is an Urban Trail?





- **Hard surface,**
- **All-weather,**
- **For recreation and/or transportation, and**
- **For bicycles, pedestrians, rollerbladers, skateboarders, and those with disabilities.**



# The Typical Urban Trail



Southern Walnut Creek Trail

	Criteria
Standard Width	12'
Maintained Vegetated Shoulder	2'
Standard Vertical Clearance	10'

# The Dual-Track Urban Trail



	Criteria
Standard Width	5' for pedestrian side 10' for bicyclist side
Maintained Vegetated Shoulder	5' user separation 2' shoulder
Standard Vertical Clearance	10'





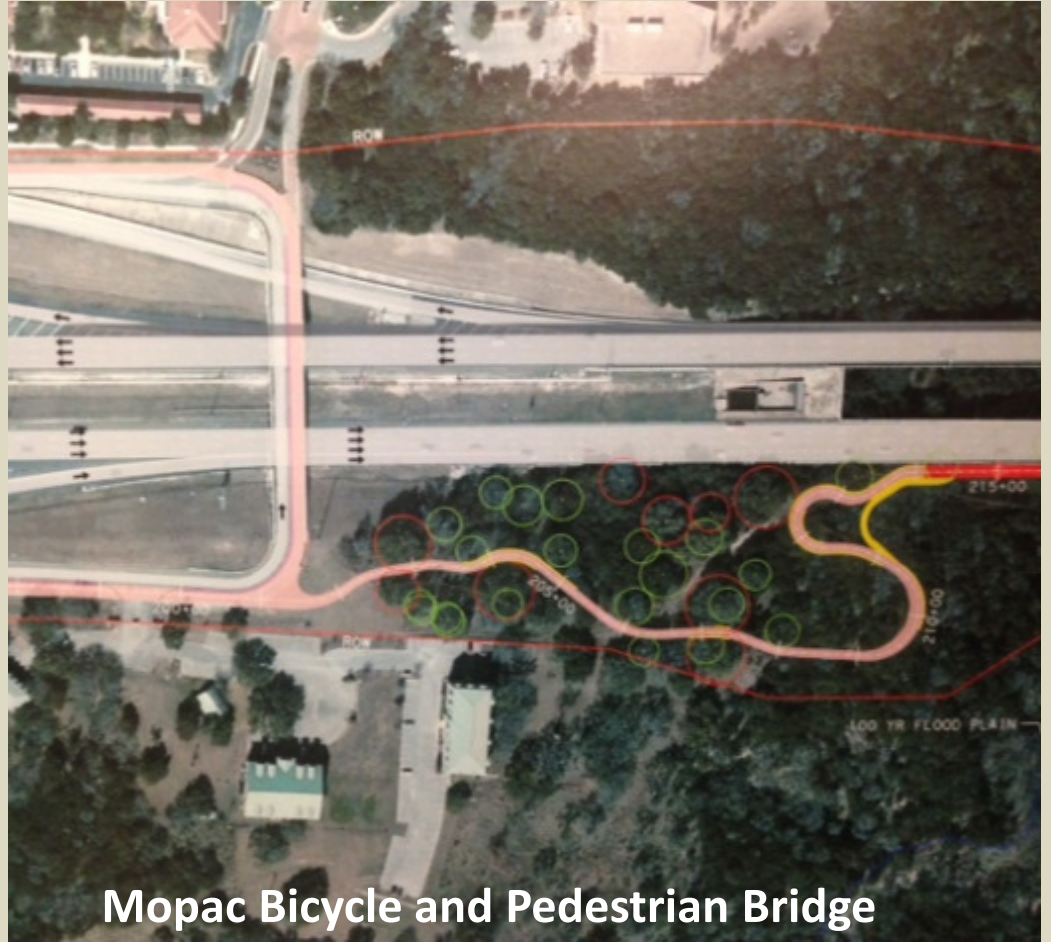
Lighting where appropriate



Kevin Jahnhardt 2-12-2011

# Design with nature

Southern Walnut Creek Trail



Mopac Bicycle and Pedestrian Bridge



# Security & emergency access



# Wayfinding





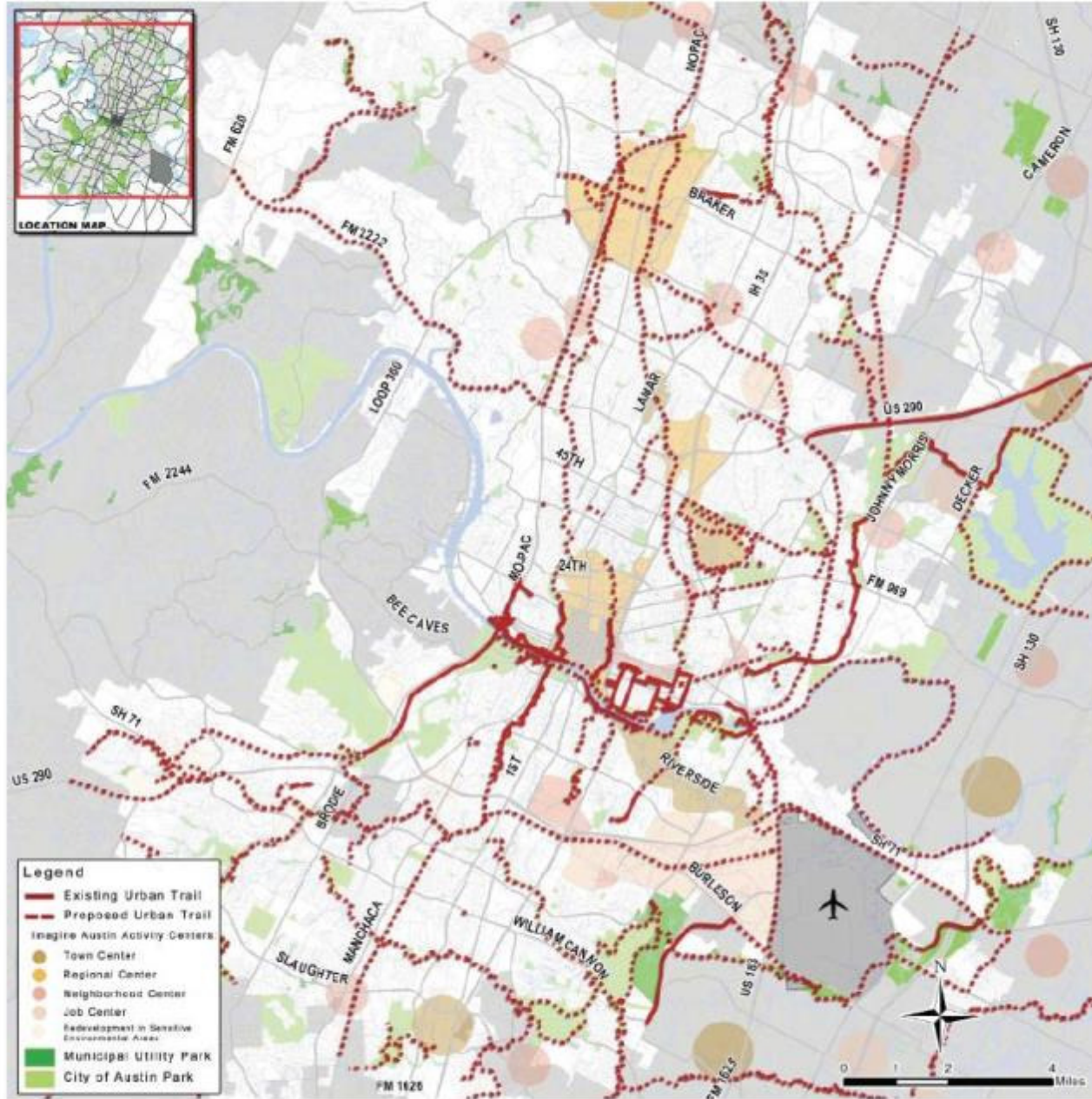
**Promote developer incentives**

# Proposed Urban Trail Network





# AUSTIN URBAN TRAILS



- Conceptual plan for route connectivity.
- **30** miles of existing Urban Trails, and
- **50** miles of recommended High Priority Urban Trails.
- Final Routes dependent upon:
  1. environmental feasibility,
  2. stakeholder input, and
  3. available funding.

Alignments shown are conceptual, and are intended to show geographic connectivity. More detailed routing, environmental evaluations and area connections will be developed for each corridor as funding is identified. Pending a more detailed analysis and adjacent, adequate bicycle/pedestrian facilities, a "no-build" option may be appropriate.



Questions?

