



Architects
Clayton&Little

Preliminary - Not for Construction - This drawing was prepared under the supervision of Paul Clayton. It is not to be used for regulatory approval, permitting or construction purposes.

The Stonewall

614 Thru 618 Blanco Street, Austin, Texas 78703

The Stonewall

614 Thru 618 Blanco Street, Austin, Texas 78703





RESTORE & REUSE HISTORIC GATE



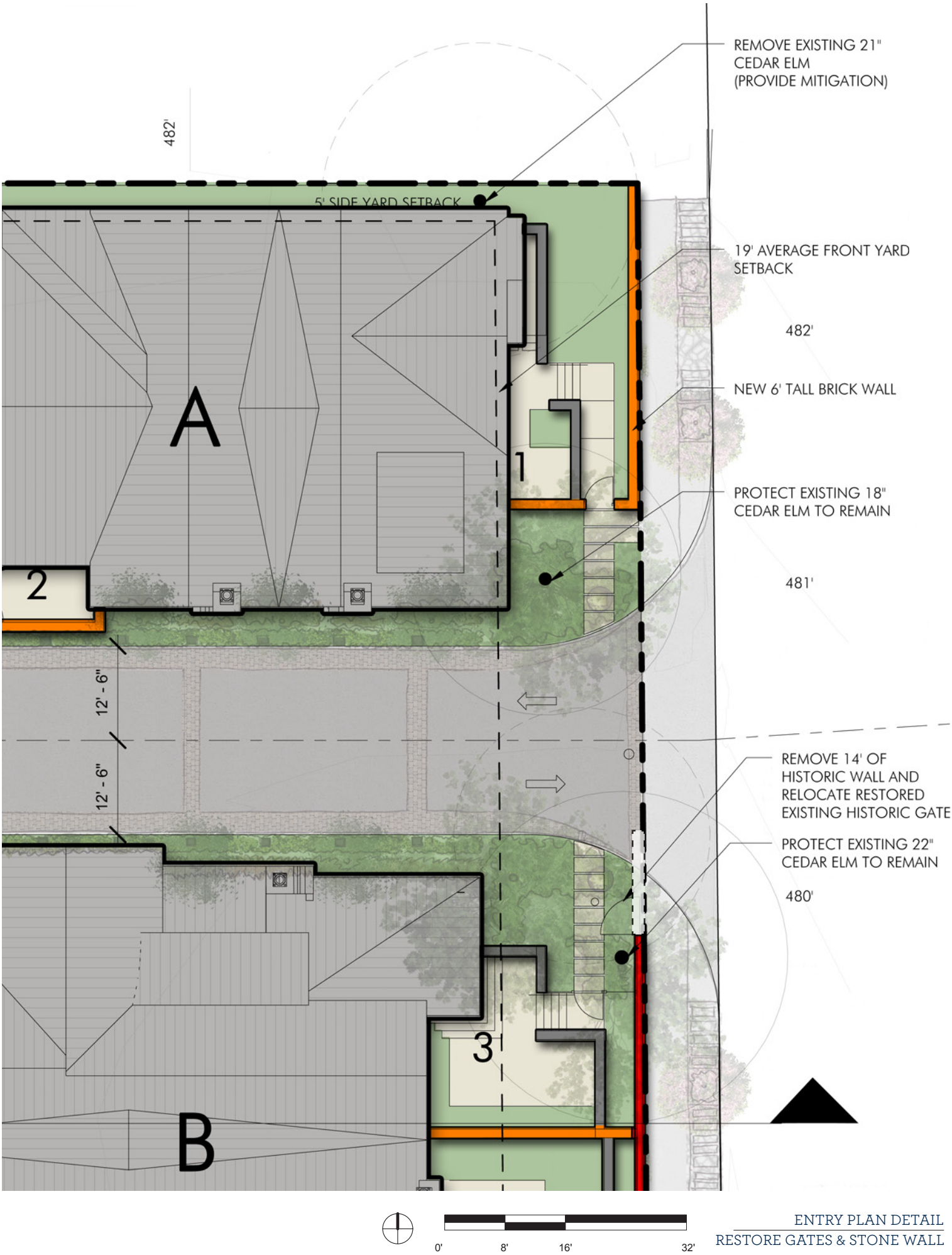
RESTORE & REUSE HISTORIC GATE

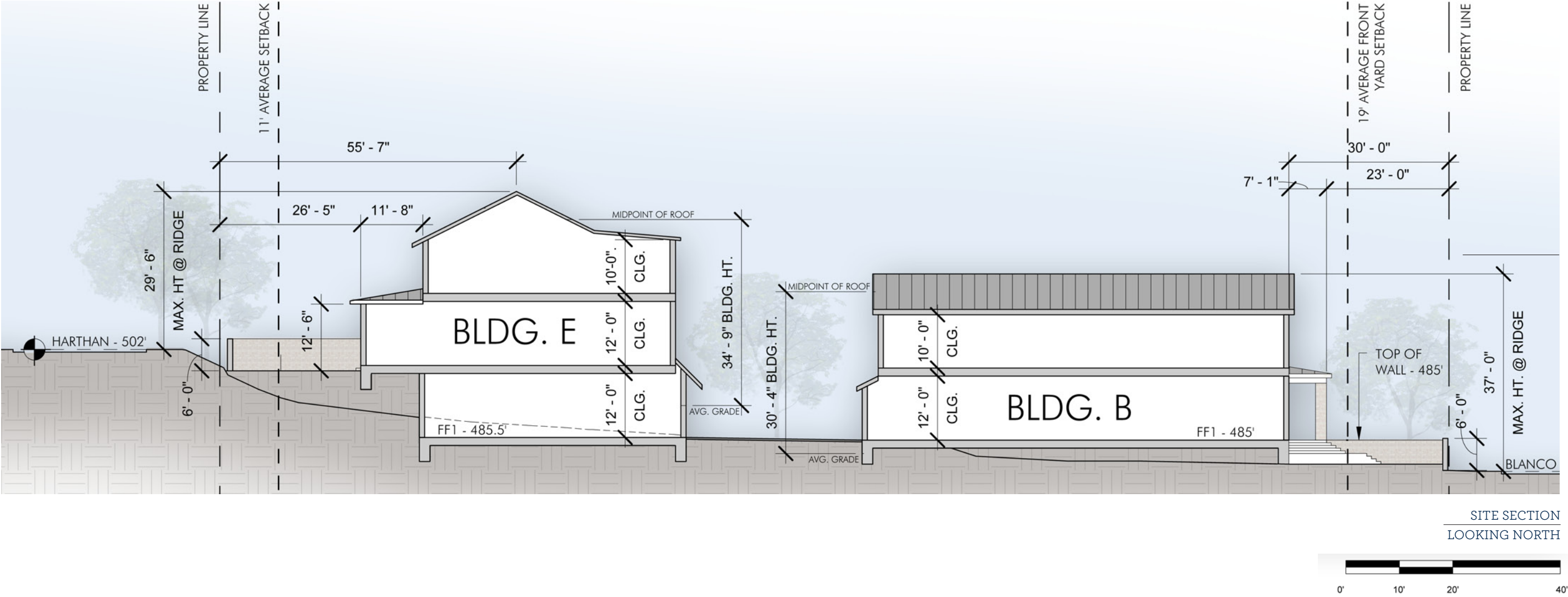


RESTORE & REUSE HISTORIC GATE



STABILIZE & RESTORE EXIST. STONE WALL



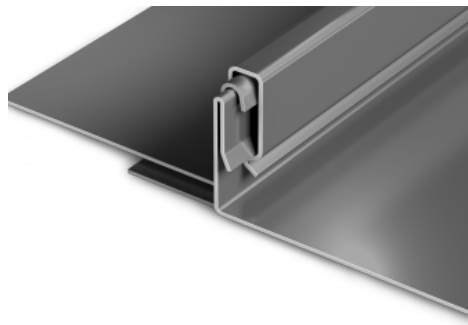


The Stonewall

614 Thru 618 Blanco Street, Austin, Texas 78703



EXTERIOR MATERIALS



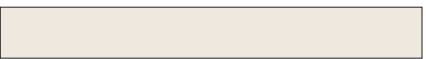
STANDING SEAM
METAL ROOF



SAWN LIMESTONE
LINTELS AND SILLS



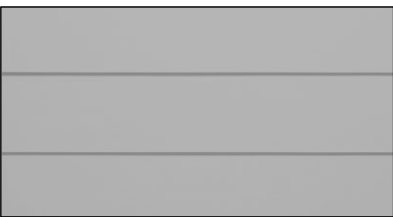
ELGIN BUTLER - CHESAPEAKE



IVORY WINDOWS
METAL CLAD WOOD BY WINDSOR
(CERTAIN LOCATIONS)



BLACK WINDOWS
METAL CLAD WOOD BY WINDSOR
(MOST LOCATIONS)

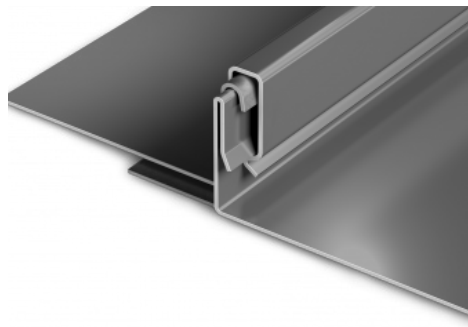


HARDIE PLANK SIDING
MEDIUM GRAY



BUILDING A ELEVATION
LOOKING NORTH

EXTERIOR MATERIALS



STANDING SEAM
METAL ROOF



SAWN LIMESTONE
LINTELS AND SILLS



ELGIN BUTLER - CHESAPEAKE



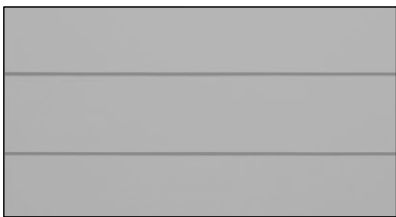
STUCCO



IVORY WINDOWS
METAL CLAD WOOD BY WINDSOR
(CERTAIN LOCATIONS)



BLACK WINDOWS
METAL CLAD WOOD BY WINDSOR
(MOST LOCATIONS)

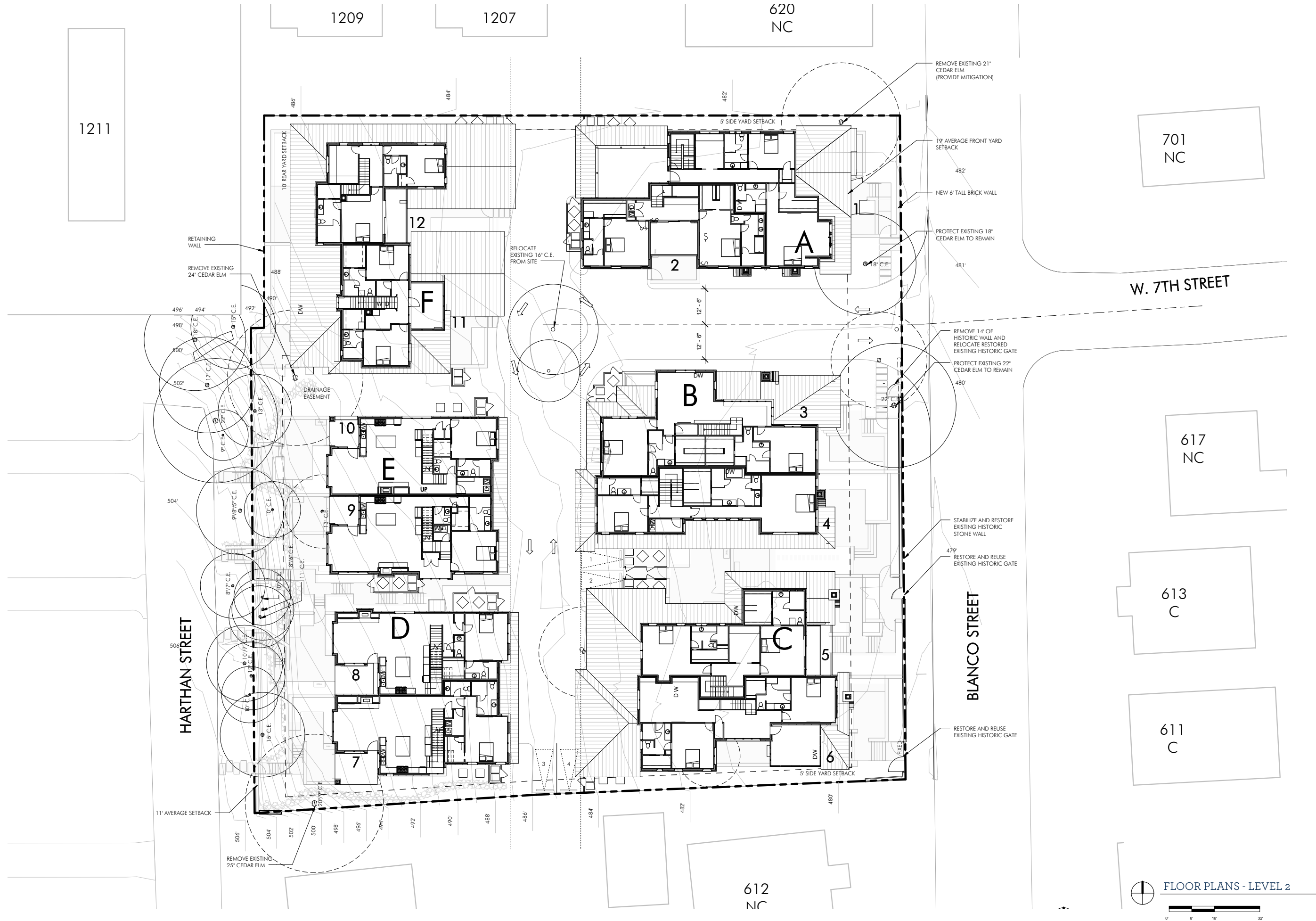


HARDIE PLANK SIDING
MEDIUM GRAY



614 Thru 618 Blanco Street, Austin, Texas 78703





The Stonewall

614 Thru 618 Blanco Street, Austin, Texas 78703



FLOOR PLANS - LEVEL 2



The Stonewall

614 Thru 618 Blanco Street, Austin, Texas 78703

