



# Community Solar Update

Danielle Murray, Manager, Solar Energy Services  
Presentation to Resource Management Commission  
June 17, 2014



CLEAN, AFFORDABLE, RELIABLE ENERGY & EXCELLENT CUSTOMER SERVICE




# Community Solar Overview

- Community Solar will provide access to solar energy for customers unable to install solar panels on their own homes or dwellings.
  - Renters and homeowners/condo dwellers with shaded roofs
  - Customers unable to make the upfront investment in rooftop systems
- Local solar photovoltaic projects will be developed to supply solar energy for this program.
  - Supporting Austin's Climate Protection Plan, and local solar goals
- Allows participants to receive the benefits of solar power without actually owning/hosting the solar panels on-site





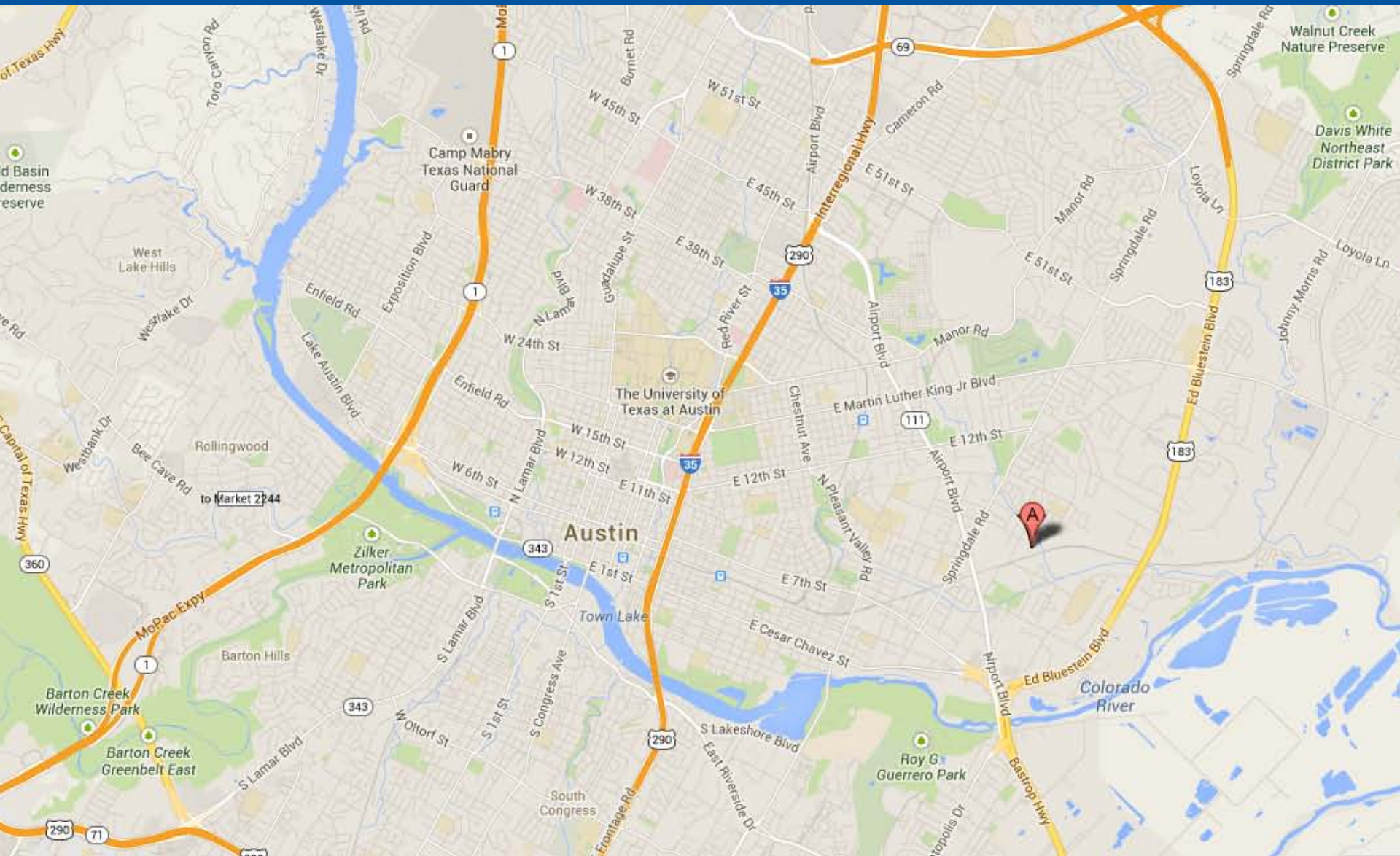
# Community Solar RFP Timeline

- 
- A large, light blue arrow pointing downwards, indicating the chronological sequence of the timeline items.
- Community Solar RFP released Feb 24
    - For construction, operation and maintenance of up to 4 MW (AC) PV to be constructed at the Kingsbery site
    - PPA structure with AE as off-taker
  - RFP closes May 14
  - Expect ~6 weeks to review and begin negotiations; 6-10 weeks from RFP close to award
  - Contract approval at Council in August
  - Break ground on site fall 2014
  - Expected online date: Q2 2015





# Kingsbery Site

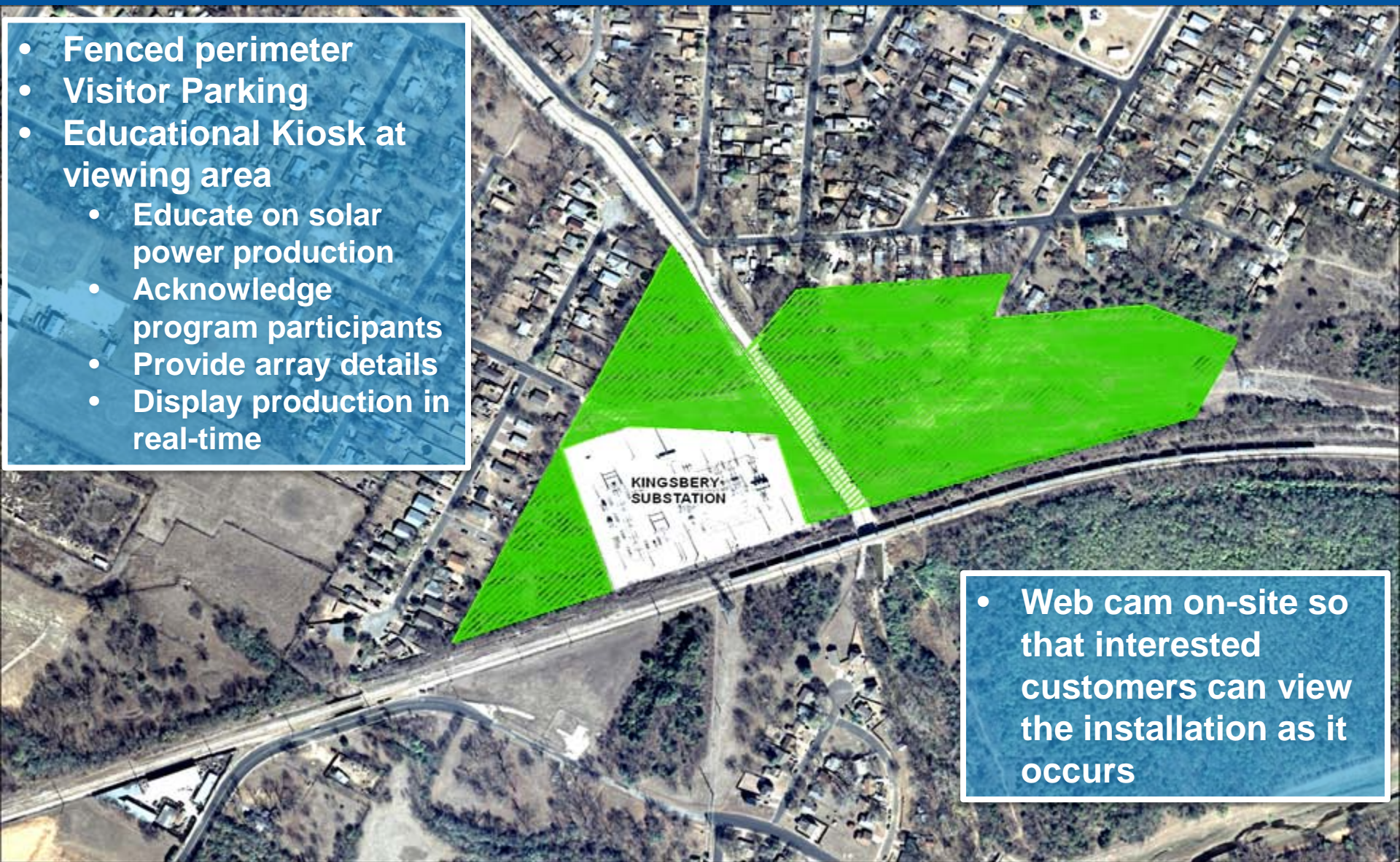






# Kingsbery Site

- Fenced perimeter
- Visitor Parking
- Educational Kiosk at viewing area
  - Educate on solar power production
  - Acknowledge program participants
  - Provide array details
  - Display production in real-time



- Web cam on-site so that interested customers can view the installation as it occurs





# Preliminary Program Design

## Basics:

- Opt-in program
- Residential only (to start)
- Portable within AE territory
- Not transferable to other customers/accounts

## Key Considerations:

- Easy to understand
- Easy to integrate with billing
- Cost recovery
- Scalable
- Meet customer desires
- Create attractive program





# Program Models Under Consideration

## Subscription models

- Percent of customer's monthly bill (e.g. 25%, 50%, 75% or 100%)
- Monthly kWh block (e.g. in 250kWh increments)
- Capacity (kW) block (e.g. in 1 kW increments)

## Pricing Models

- **Fixed premium model**

Community Solar subscribers sign up for a rate set at a constant premium over the regular Power Supply Adjustment (PSA).

- **Variable cost model**

Community Solar subscribers sign up for a rate for the solar energy at a price reflective of the cost to AE for procuring the solar energy and also receive a credit at the prevailing Value of Solar Rate.

# Questions? Comments? Suggestions?

- What do customers want out of a community solar program?
- What are key program design elements you'd like to see?





**City of Austin - Austin Energy  
Customer Energy Solutions**

**Solar Energy Services**

721 Barton Spring Rd.

Austin, Texas 78704-1194

p. 512.322.6055

e. [danielle.murray@austinenergy.com](mailto:danielle.murray@austinenergy.com)

**Twitter**



@austinenergy

**Facebook**



[facebook.com/austinenergy](https://facebook.com/austinenergy)

# Thank You!

