



Architects
Clayton&Little

Preliminary - Not for Construction - This drawing was prepared under the supervision of Paul Clayton. It is not to be used for regulatory approval, permitting or construction purposes.

The Stonewall

614 Thru 618 Blanco Street, Austin, Texas 78703

614 Thru 618 Blanco Street, Austin, Texas 78703





RESTORE & REUSE HISTORIC GATE



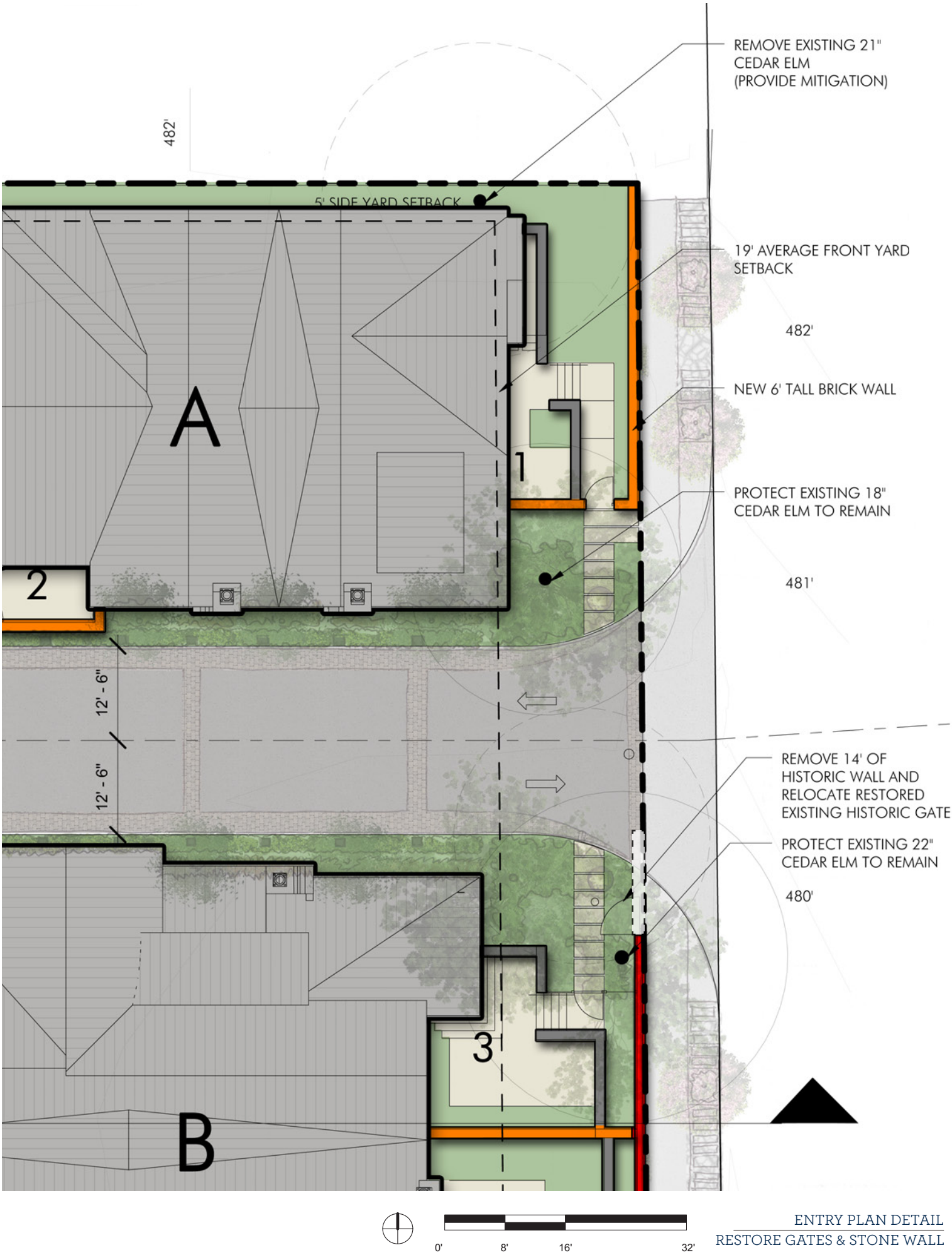
RESTORE & REUSE HISTORIC GATE



RESTORE & REUSE HISTORIC GATE



STABILIZE & RESTORE EXIST. STONE WALL



ENTRY PLAN DETAIL
RESTORE GATES & STONE WALL

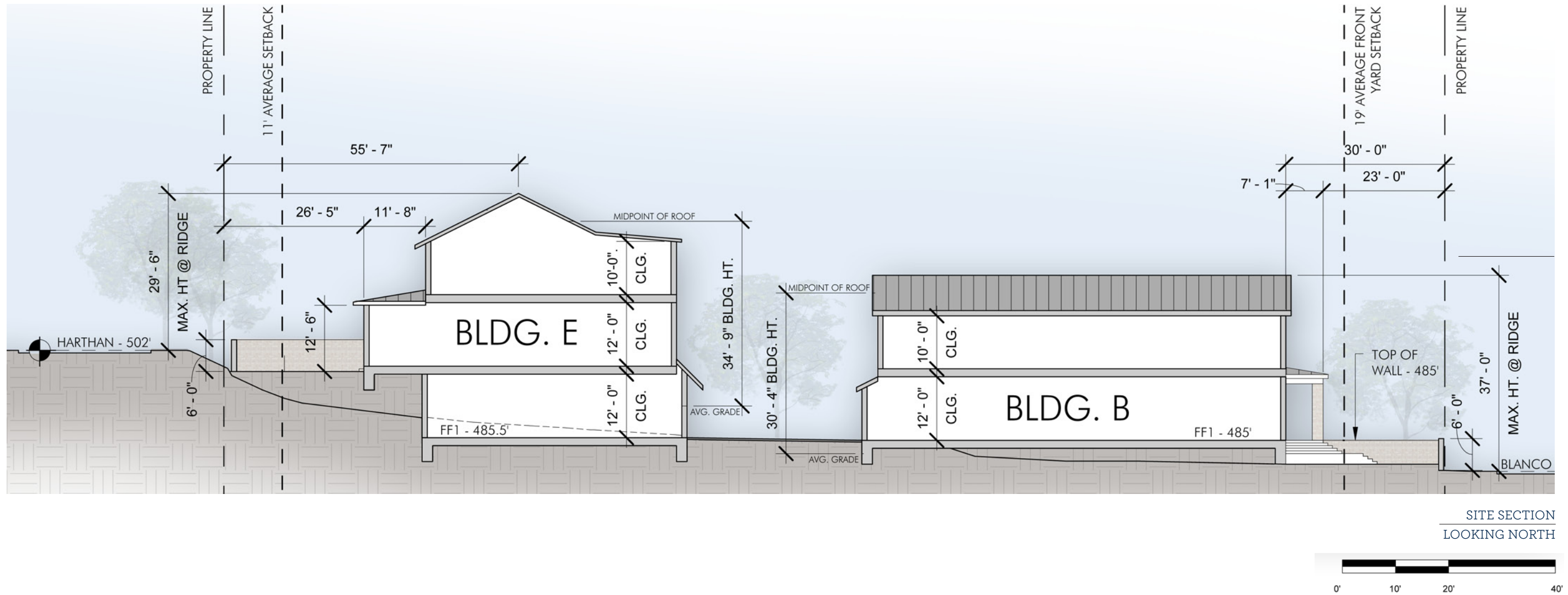
Architects
Clayton&Little
Preliminary - Not for Construction - This drawing was prepared under the supervision of Paul Clayton. It is not to be used for regulatory approval, permitting or construction purposes.

The Stonewall

614 Thru 618 Blanco Street, Austin, Texas 78703

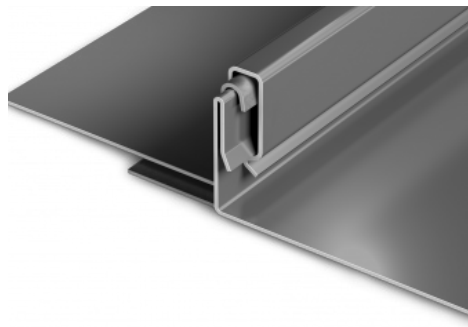
The Stonewall

614 Thru 618 Blanco Street, Austin, Texas 78703





EXTERIOR MATERIALS



STANDING SEAM
METAL ROOF



SAWN LIMESTONE
LINTELS AND SILLS



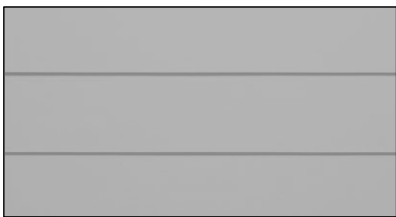
AUSTIN COMMON
BLEND (SIMILAR)



IVORY WINDOWS
METAL CLAD WOOD
(CERTAIN LOCATIONS)



BLACK WINDOWS
METAL CLAD WOOD
(MOST LOCATIONS)



PAINTED SIDING
MEDIUM GRAY



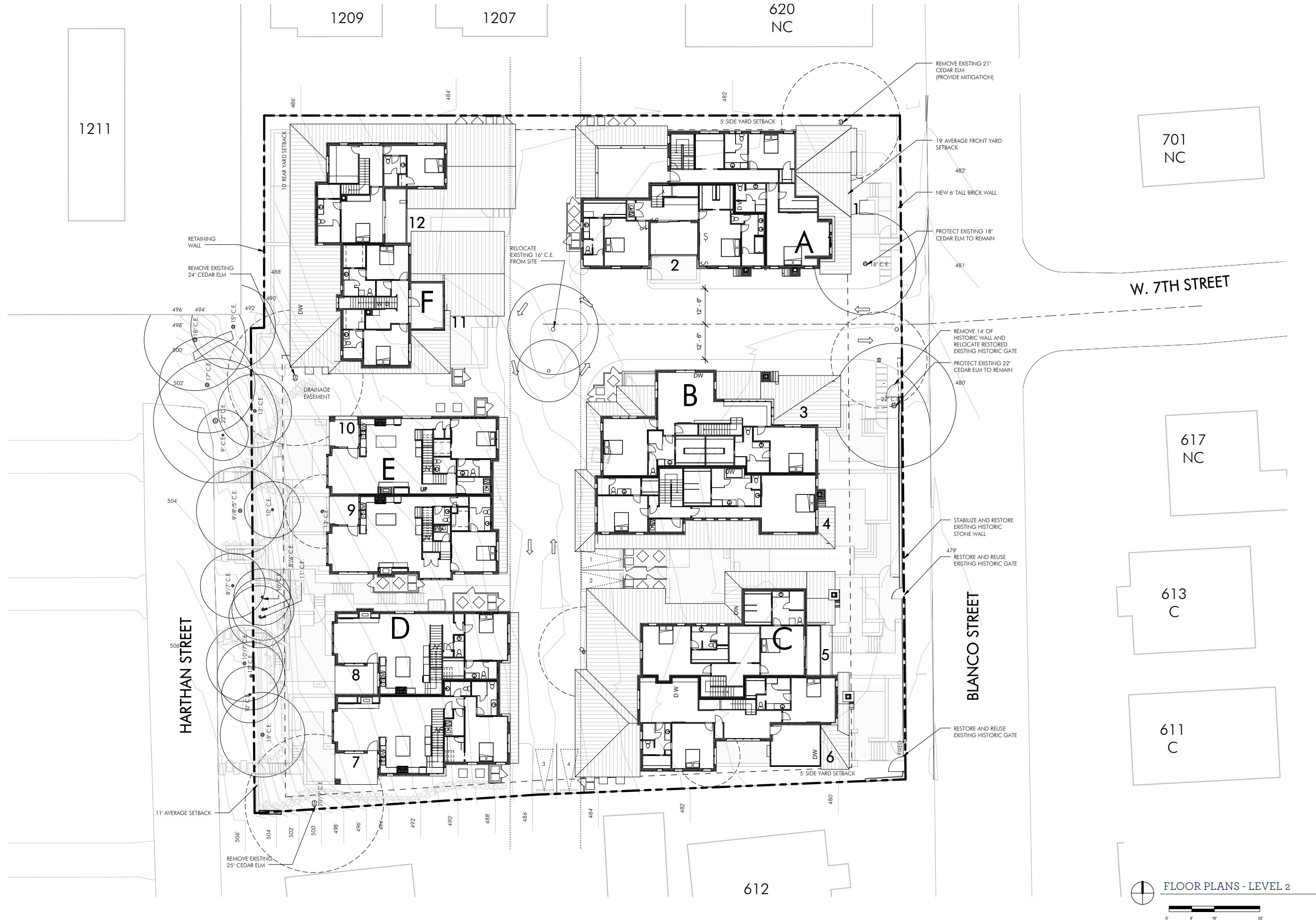
The Stonewall

614 Thru 618 Blanco Street, Austin, Texas 78703



The Stonewall

614 Thru 618 Blanco Street, Austin, Texas 78703

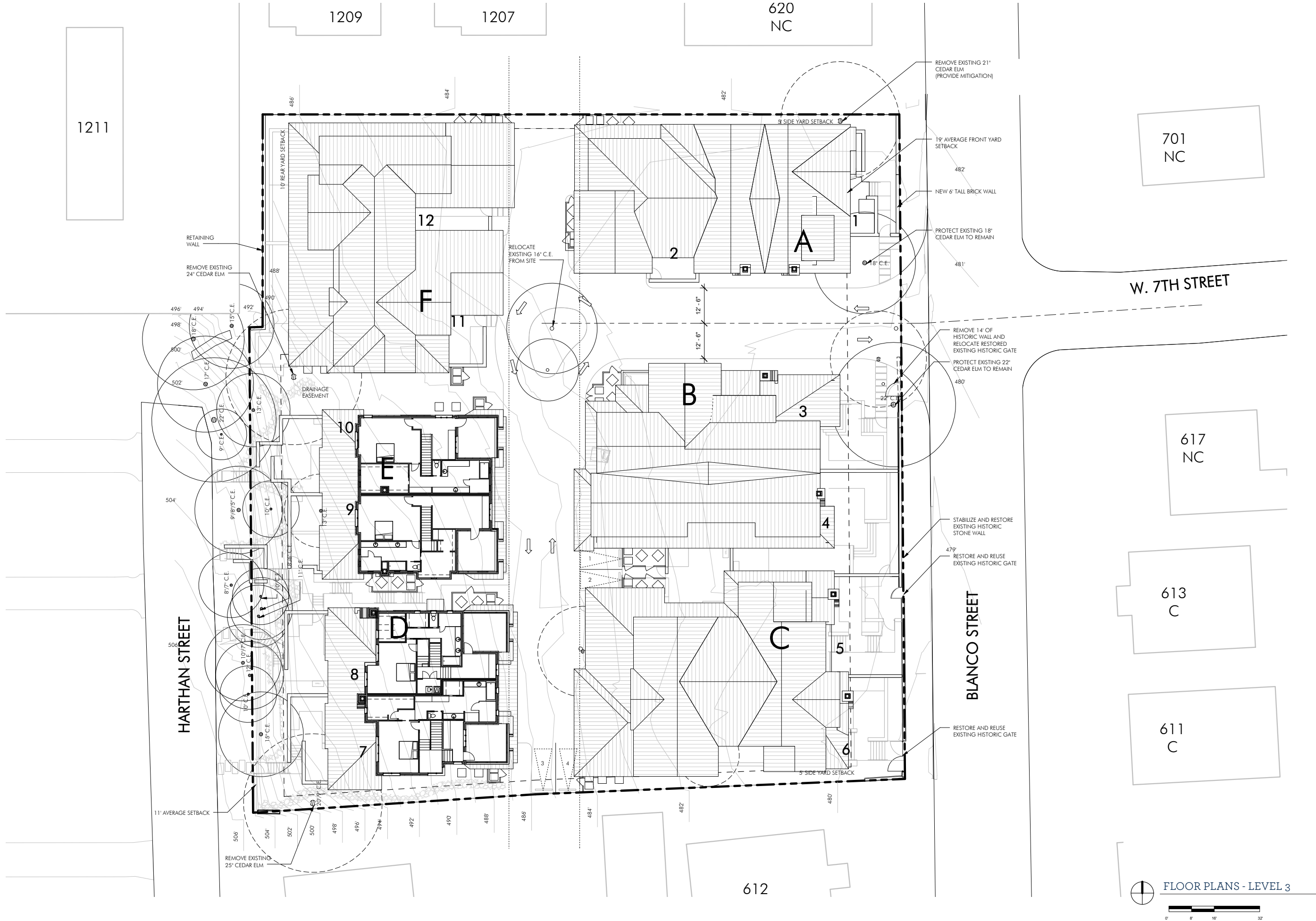


FLOOR PLANS - LEVEL 2



The Stonewall

614 Thru 618 Blanco Street, Austin, Texas 78703



FLOOR PLANS - LEVEL 3

