



Plug-In Electric Vehicles Program Update

Urban Transportation Commission

Austin Energy Contacts:

Karl Popham, Mgr, Electric Vehicles & Emerging Tech
Jeff Vice, Director, Local Government Relations





ELECTRIC VEHICLE OVERVIEW

PEV - Plug-in Electric Vehicle





Strategic Vision

City Resolutions to promote the environmental, community, utility, national security, and economic benefits:

- PEV Incentives & Leadership (050301-48)
- PEV Feasibility Report (040729-78)
- Energy Research; Pecan Street Inc. (20080925-084 & 20090806-033)
- Supports Imagine Austin Plan
- Supports Climate Protection & Gen. Plan
- PEV parking enforcement 20140213-045



Austin Energy PEV programs are fully compliant with COA Resolutions





Recognition & Awards

Top 10 Networked
Utility North America &
#1 “coolest” EV project
–GreenTech Media

Two “Bronze Quill”
Awards
-International Assoc. of
Business Comm.

A Top
EV Friendly City
-US Electric Drive
Transportation Assoc.

“Austin Energy’s charging network – now with more than 170 stations – is one reason people are looking at electric cars.” –YNN News

“Austin a top city for electric cars,” –Austin Business Journal

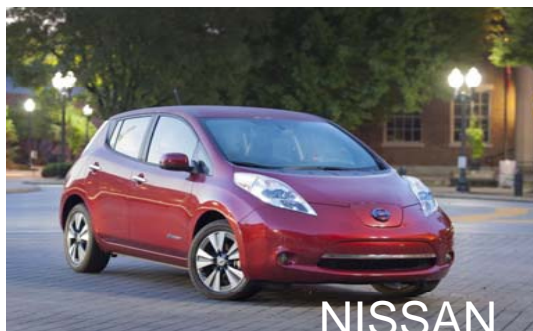
*“The utility has earned a reputation as a national player in plug-in vehicles...”
–Austin American Statesman*

*“Which are best cities for electric vehicles?” Austin ranked #4 nationally.
–USA Today*

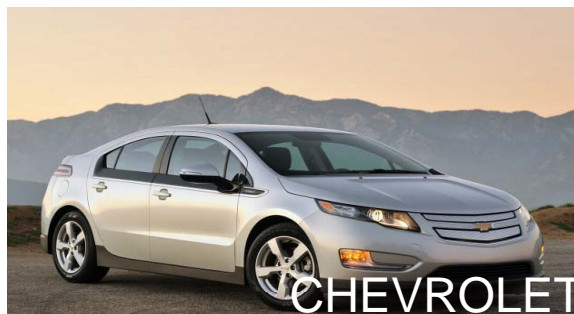


Plug-In Vehicles on the Road Today

Economy



Mid-Tier

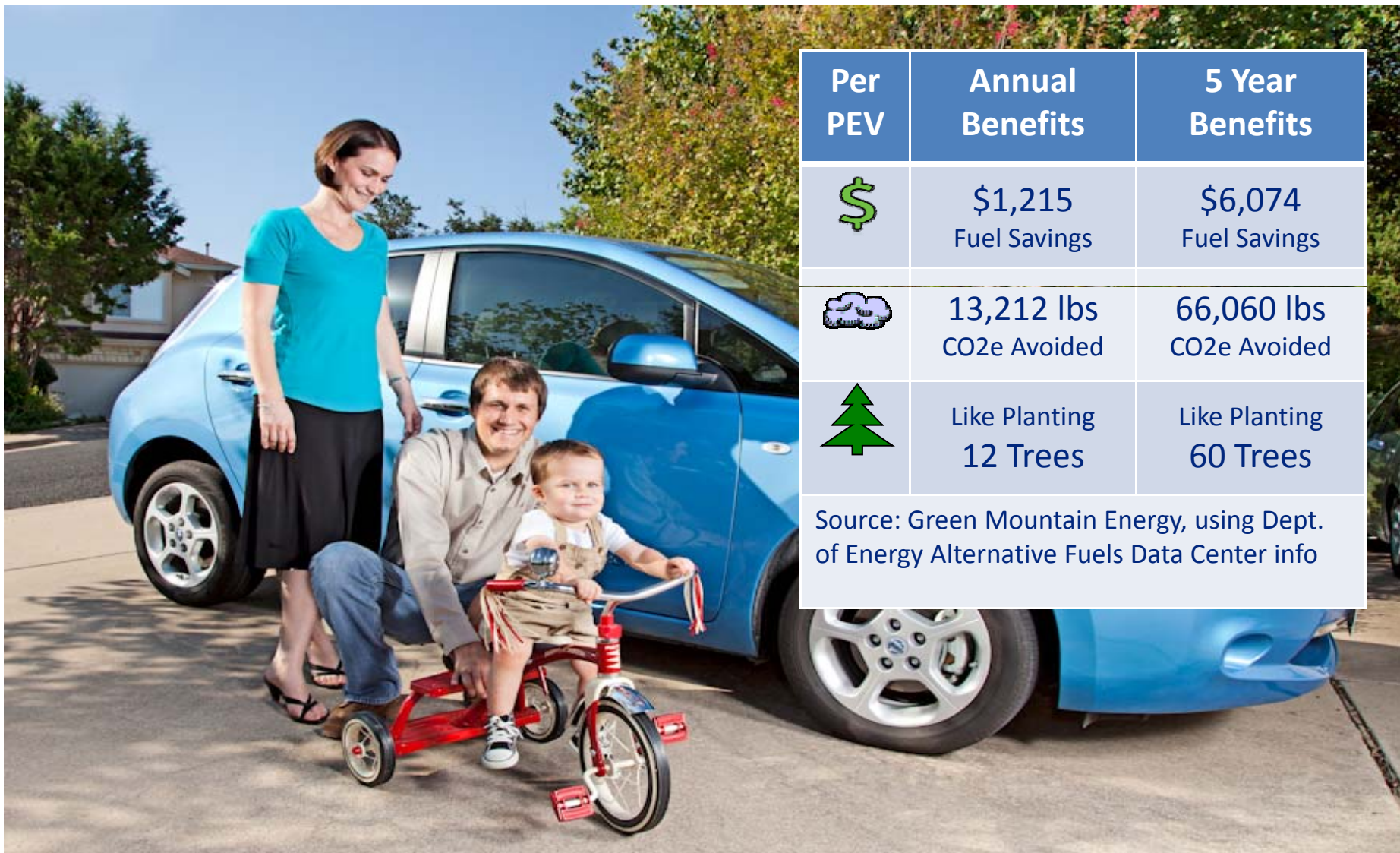


Luxury





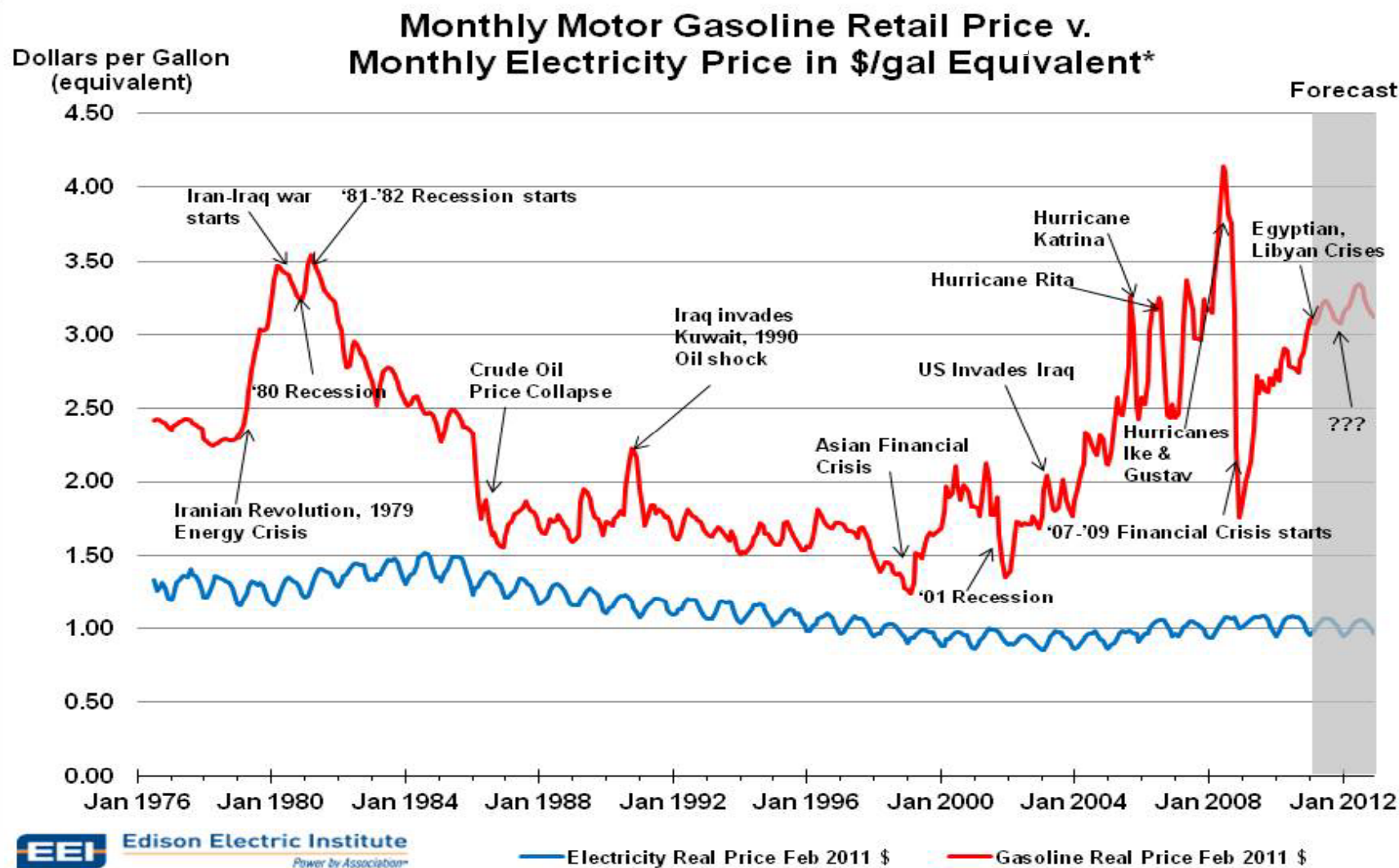
A Cleaner, Cost-Effective Choice



Per PEV	Annual Benefits	5 Year Benefits
\$	\$1,215 Fuel Savings	\$6,074 Fuel Savings
	13,212 lbs CO2e Avoided	66,060 lbs CO2e Avoided
	Like Planting 12 Trees	Like Planting 60 Trees
Source: Green Mountain Energy, using Dept. of Energy Alternative Fuels Data Center info		



Price Stability vs. Gasoline





How Does the Electric Vehicle “Fill Up”?





Types of “Electric Fuel Pumps”

Charge Level	Voltage	Current	Power	Power Similar To	Time To Fully Charge PEV
Level 1	120 V	8 – 12 Amps	1.0 – 1.4 kW	Toaster	12-14 HOURS
Level 2	240 V	15 – 100 Amps	3.3 – 6.6 kW	Clothes Dryer	4 – 8 Hours
DC Fast-Charger	480-600 V	80 – 120 Amps	20 – 72 kW	5 – 10 Central Air Conditioners	30 Minutes



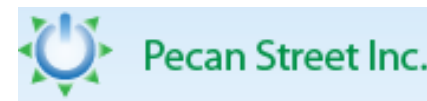
Key Programs

Plug-In EVerywhere™

- * Under \$5/month for unlimited station access or \$2/hour; powered by renewable GreenChoice®
- * Up to \$1,500 rebate for home PEV Level-2 charging stations
- * Up to \$4,000 rebate for public, workplace, multifamily, and fleet Level-2 PEV charging stations



Pecan Street PEV Pilot - Study the largest, non-fleet PEV adoption in the country



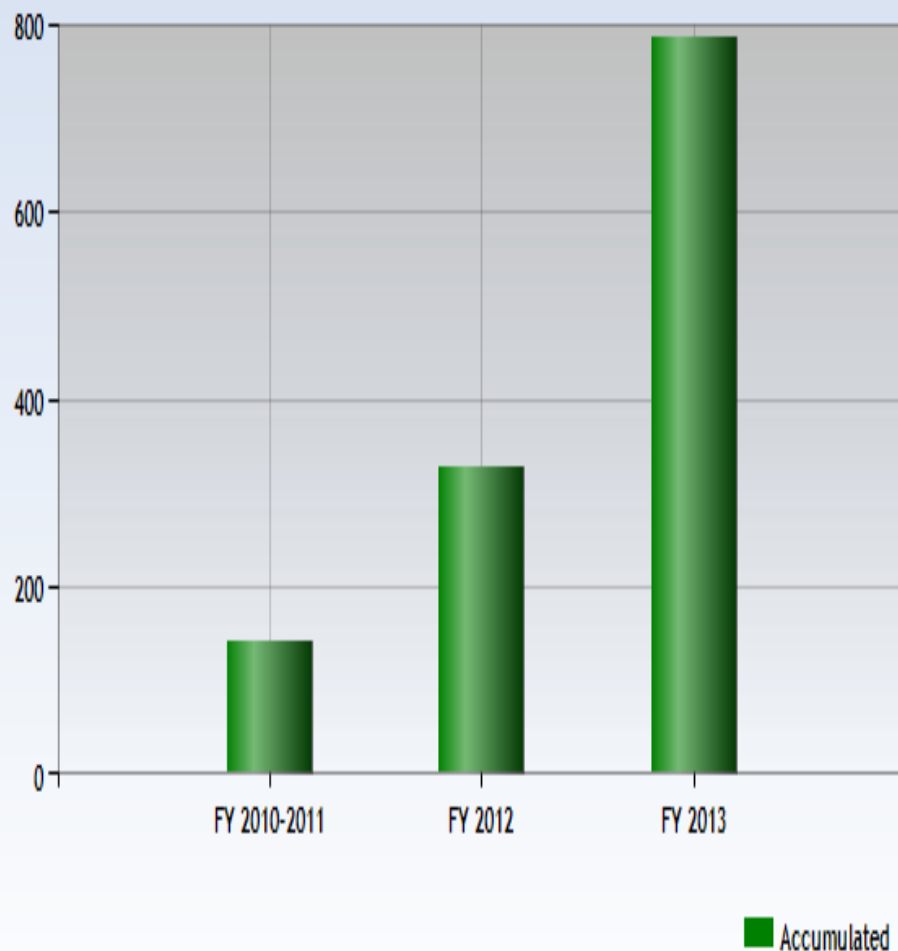
E-Ride Program – Up to \$300 rebate from the purchase of electric bikes & scooters



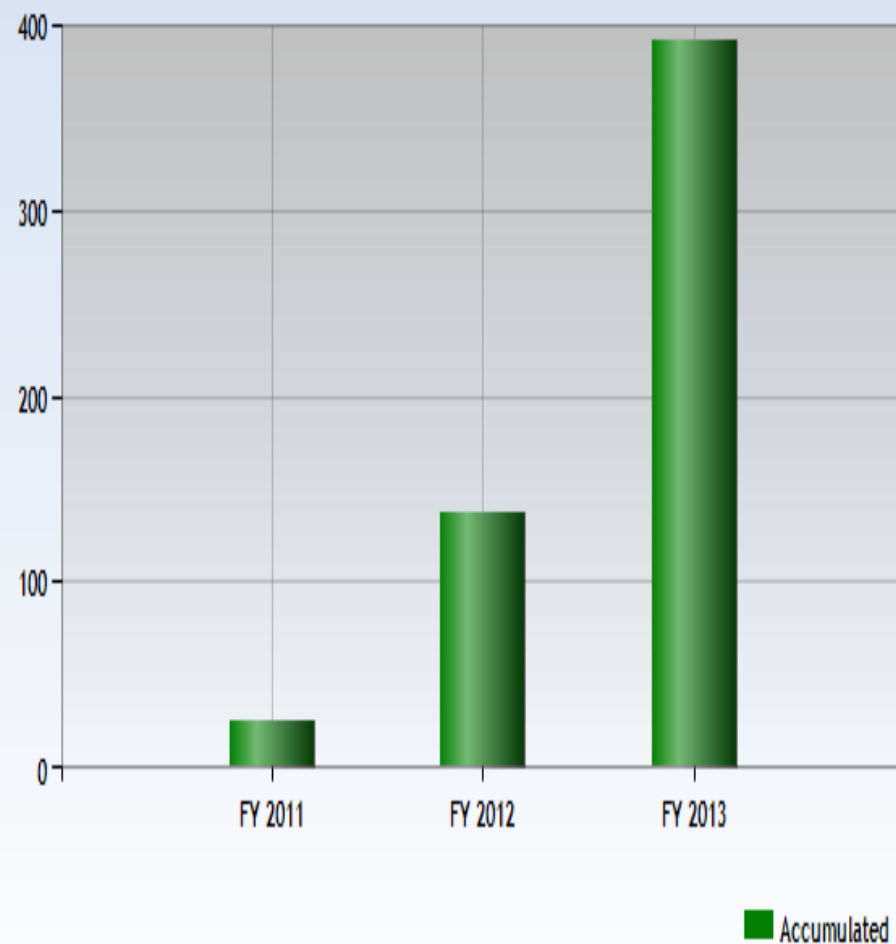


Growth; Year over Year

Four Wheel PEVs in the Austin Area



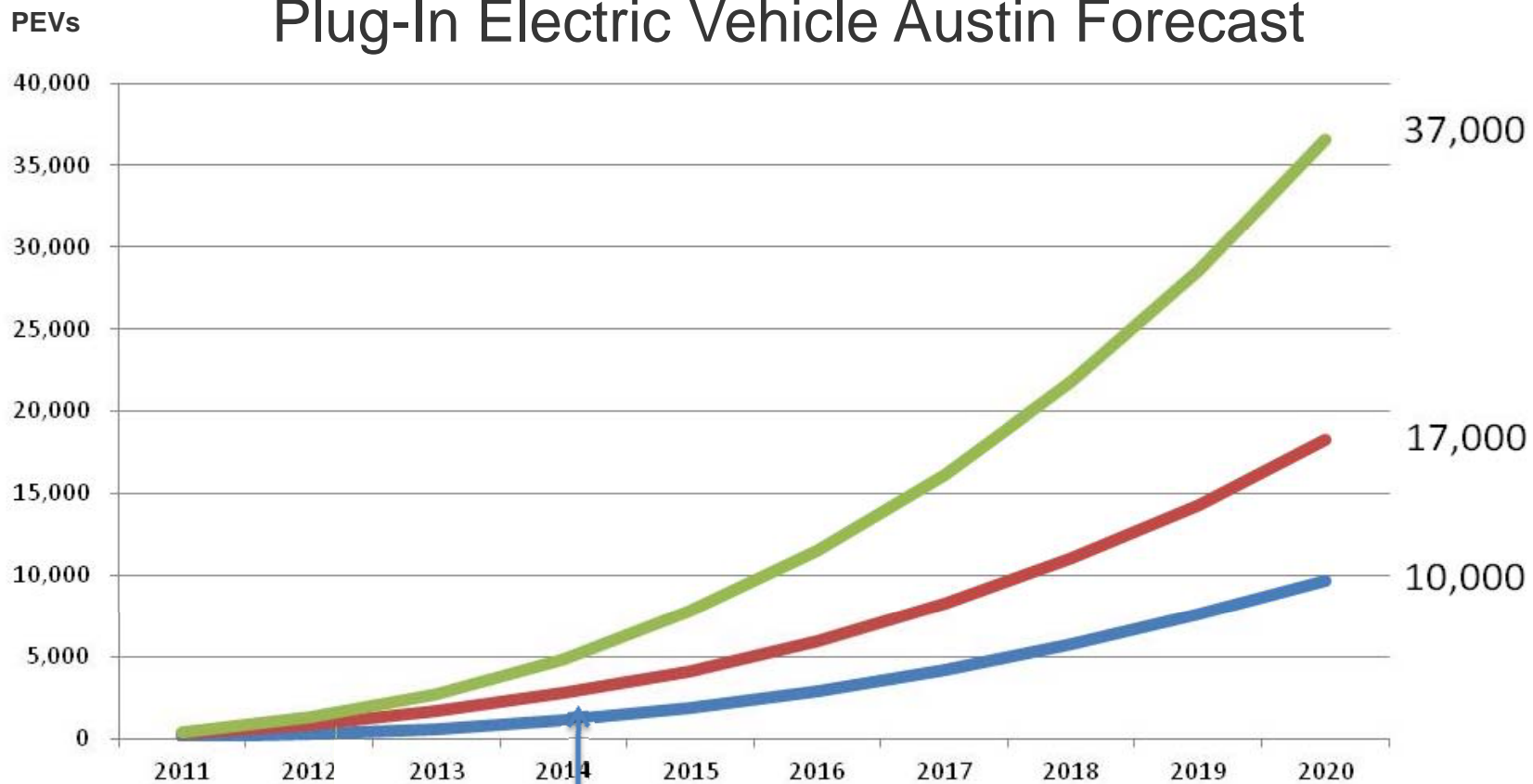
Plug-In EVerywhere Subscribers





Adoption Curves (Low, Med, High)

Electric Power Research Institute (EPRI) Plug-In Electric Vehicle Austin Forecast



1,132 PEVs on Austin Area Roads as of Mar 2014



Federal Grants - \$1.6M

ChargePoint America

\$633,000 – 100% Complete

Implementation of Austin's first 113 public charging stations



Texas River Cities Electric Vehicle Initiative

\$500,000 – 90% Complete (6/30/2014)

Developed a regional action plan with participation from approx. 50 organizations



TEXAS RIVER CITIES
Plug-In Electric Vehicle Initiative

Central Texas Fuel Independence

\$500,000 – 40% complete (1/31/2015)

Provide a forum, outreach, and first responder training for electric and natural gas vehicles





Managed Network Snapshot

(As of March 2014)

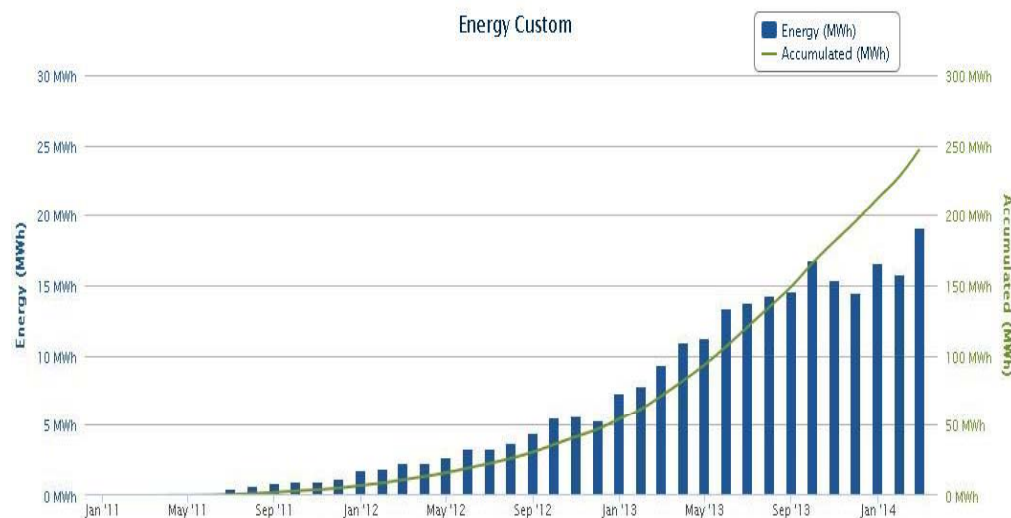
42,621
Charging
Events

492
Pre-Pay
Subscribers

1,132 Area
PEVs

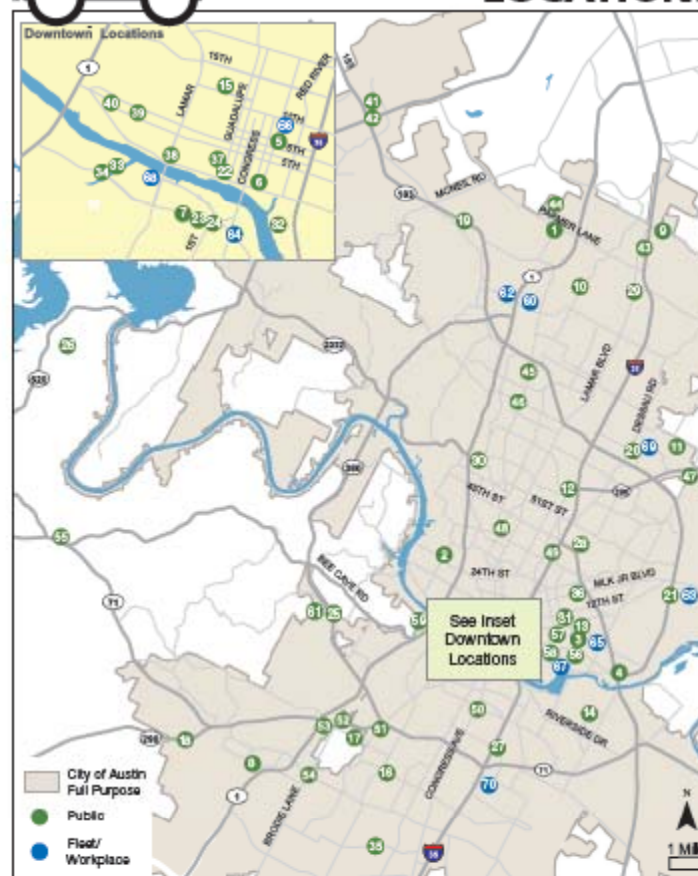
186
stations
at 72
locations

Energy Usage per Month



Plug-In
EVeverywhere™

Charging
Station
LOCATIONS





City Resolution 20140213-045

BE IT RESOLVED BY THE CITY COUNCIL OF THE CITY OF AUSTIN:

The City Manager is directed to work with citizen stakeholders and the Urban Transportation Commission to develop a recommendation for **resolving the issue of non-electric vehicles parked at electric vehicle charging stations on public property.**

Proposed Recommendation:

The City of Austin will install restricted parking signage on all public property station locations with enforcement to be managed by The Parking Enforcement group of The Austin Transportation Department. Parking violations will be in accordance with:

§ 12-5-40 TOW-AWAY ZONE.

A person may not stop, stand, or park a vehicle in a restricted parking area that is designated as a tow-away zone.

