



Water Conservation Program Update 4th Qtr FY2014

Resource Management Commission

September 16, 2014

Mark Jordan

Water Conservation Program Coordinator

FY2014 program trends

- Meeting/exceeding projected levels:
 - Total and Residential GPCD
 - Residential Rainwater Rebate Program
 - Drought Survival Tool Kit
 - WaterWise Landscape
 - ICI Rebate Programs
 - Aerator/Showerhead Distribution
 - Residential Irrigation System Rebate Applications

FY2014 program trends (con't)

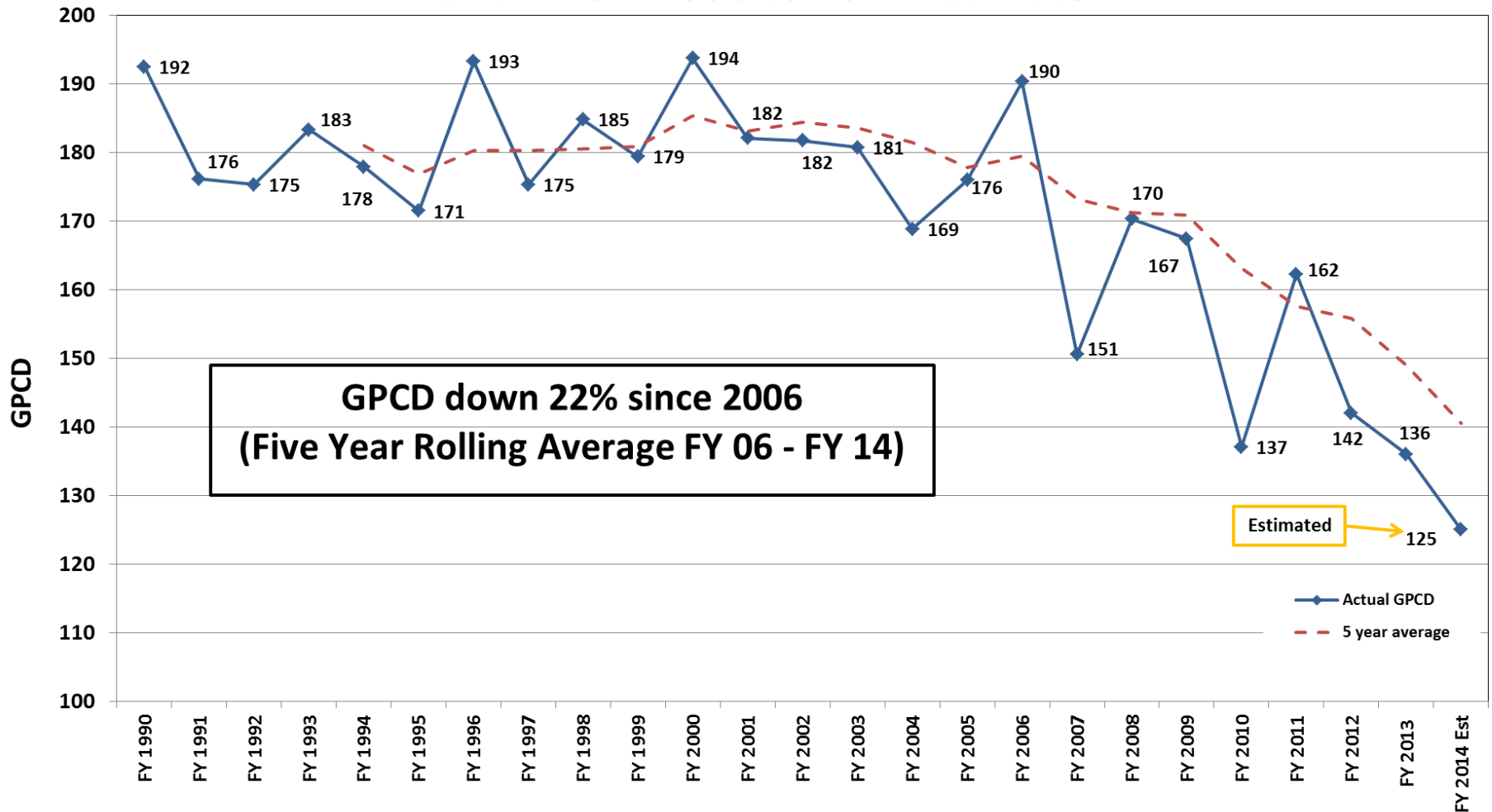
- Anticipated decreased levels
 - Commercial Rainwater Rebate Program
 - Reclaimed Water Use
 - Criminal Citations
 - WashWise Rebates
 - MF/ICI Irrigation Audits and Rebates

5 & 10 Year Goals for Water Savings from Conservation

	Historic 5-Year Average	Baseline	FY2019 Goal	FY2024 Goal
Total GPCD	149	162	Non-Drought Conditions: 141 Drought Response Stage 2: 124	138
Residential GPCD	87	96	85	83

GPCD from 1990 to 2014

GPCD from 1990 to 2014 Estimate



FY14 Enforcement (to date)

311 Reports	Postcards	Warnings	Citations	Total
4,357	2,997	1,981	4	N/A
Administrative Fine Breakdown				
Sector	Commercial	Multi-Family	Residential	
Accounts	108	31	83	222
\$ Amount (potential max.)	\$52,975	\$15,650	\$9,450	\$77,625
Citation Breakdown				
Sector	Commercial	Multi-Family	Residential	
Accounts	1	2	1	4
\$ Amount (potential max.)	\$475	\$950	\$475	\$1,900

FY14 Breakdown of Administrative Fines

Water Waste Violation	\$77,625
Car Wash Efficiency Program	\$69,205
Commercial/MF Irrigation System Inspection Program	\$150,175
Total Fines	\$297,005

Reclaimed Water Use



- **FY14 Thru June: 667.93 MG (63 customers)**
- **FY13: 1.47 BG (59 customers)**
- **FY12: 1.52 BG (43 customers)**
- **FY11: 1.45 BG (40 customers)**
- **FY10: 1.09 BG (36 customers)**

Drought Update



Drought Response Activities



- June 6, 2014: staff memo Drought Response Strategies Including Alternative Water Source Options submitted to council
- July 10, 2014: AWRPTF report submitted to council
- Sept 23: AWRPTF chair to brief council on AWRPTF report
- Sept 25: staff to submit plan, schedule, budget and stakeholder process for implementation of key AWRPTF recommendations to council

Austin Water Resources Planning Task Force (AWRPTF)

- Examine and make recommendations regarding alternative water supplies including, but not be limited to:
 - conservation, reuse, regional transmission systems and partnerships, groundwater, aquifer storage, other potential regional sources
- Make recommendations to council consistent with Imagine Austin Plan

AWRPTF Recommendations

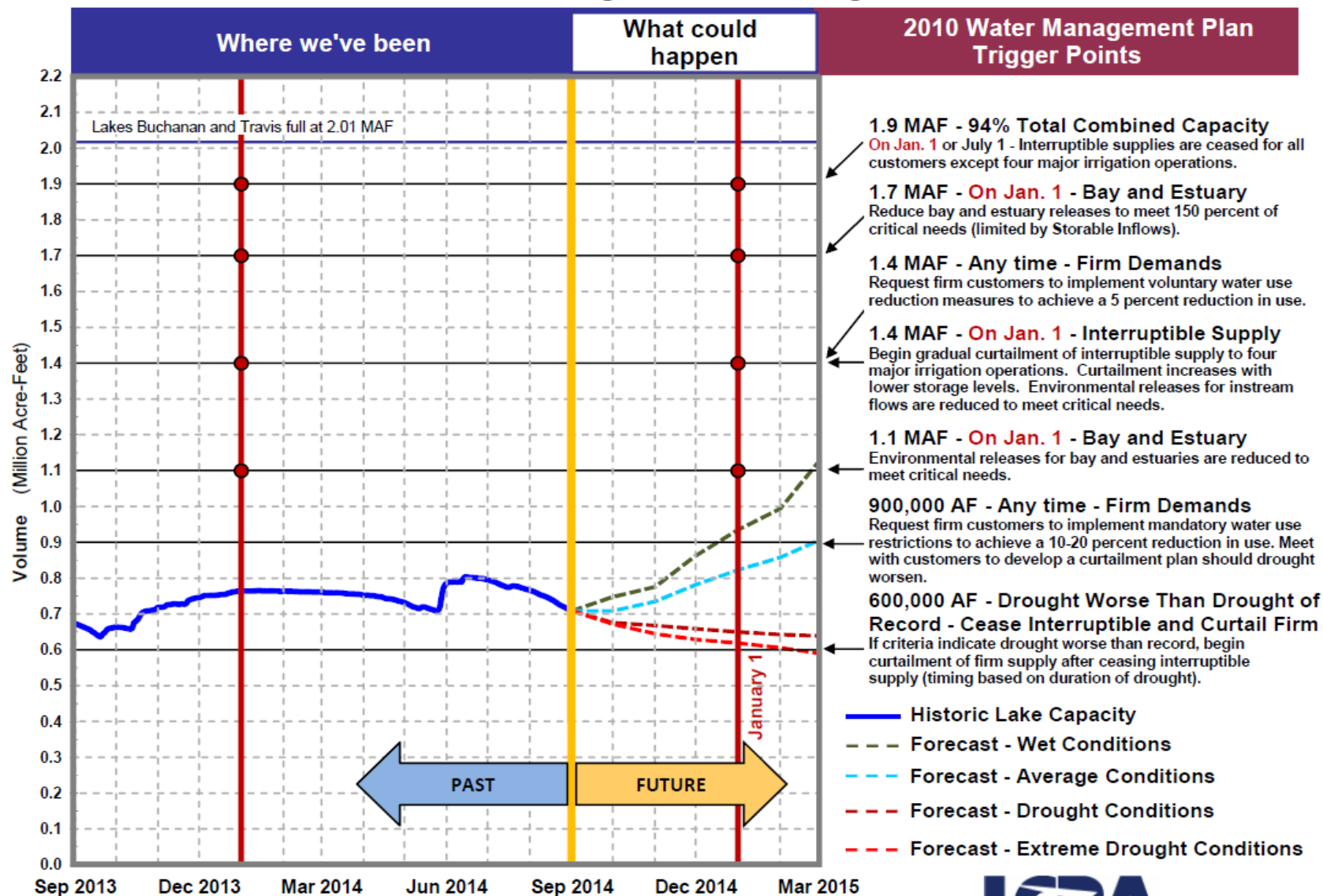
- Protect and optimize water from Colorado River Basin through conservation
- Focus on local opportunities for reusing rainwater capture & infiltration
- Initiate an integrated water resources plan to evaluate options for improving the reliability of our water supplies

Weather outlook



- Rains earlier this year have likely avoided falling below 600,000 AF this year
- But chances for El Nino this Fall have decreased
- If severe drought conditions continue, may see 600,000 AF by early next year
- Austin has measures in place to achieve more than 20% pro rata reduction should DWDOR be declared

Highland Lakes Storage *



Note: MAF equals 1 Million Acre-Feet

One Acre-Foot (a-f) equals 325,851 gallons.

Date: September 2, 2014

* Based on emergency drought relief measures affirmed by TCEQ on Feb. 26, April 30, June 4, and August 6, 2014 suspending releases of interruptible stored water for customers in the Gulf Coast, Lakeside and Pierce Ranch irrigation operations through the end of the irrigation season.



Looking Ahead – FY14 4th Qtr

- AWRPTF Chair briefing of city council September 23
- ICI Technical Workshop September 24
- Staff presentation to city council of plan, budget and timeframe for AWRPTF Report implementation
- Staff recommendations on city codes and auxiliary water issues October 23



Mark Jordan

Water Conservation Program Coordinator

(512) 974-3901

mark.jordan@austintexas.gov

www.waterwiseaustin.org

FY14 Enforcement (June)

311 Reports	Postcards	Warnings	Citations	Total
2,804	1,887	1,312	1	
Administrative Fine Breakdown				
Sector	Commercial	Multi-Family	Residential	
Accounts	60	12	35	107
\$ Amount (potential max.)	\$32,625	\$5,650	\$5,700	\$43,975
Citation Breakdown				
Sector	Commercial	Multi-Family	Residential	
Accounts	0	0	1	1
\$ Amount (potential max.)			\$475	\$475

Staff June 6, 2014 Memo

- Demand side strategies
 - Stage 3 interim and Stage 4 restrictions
 - Decentralized and auxiliary water options
 - Strengthen rapid leak response and repair
 - Encourage transition to drought tolerant landscapes

Staff Memo (con't)

- Supply side strategies
 - Expand reclaimed water system
 - LCRA WMP revisions and emergency orders
 - River/reservoir system operational changes
 - Water supply augmentation and new supply options

AWRPTF Report

- Demand management strategies
 - Interim Stage 3 and 4 drought measures
 - Toilet-replacement program for MF and Commercial facilities
 - Require capture of AC condensate for cooling towers in new facilities
 - Eliminate impediments for gray-water systems
 - Discourage in-ground irrigation systems in new residential and commercial developments
 - Enhance efforts to fix leaky utility pipes
 - Independent assessment of conservation programs
- Included water supply strategies in staff memo

Supply strategies

- Short and mid-term strategies
 - Longhorn Dam gate/operational changes;
 - Use water stored in Lake Walter Long (Decker Power Plant);
 - Lower Lake Austin during nonpeak recreational times of the year to create storage to capture and use runoff
 - Capture local inflows in Lady Bird Lake and pump to Ulrich WTP
 - Indirect potable reuse of reclaimed water through discharge to Lady Bird Lake and pumping to Ulrich WTP
- Additional studies needed
 - Reclaimed water alluvial infiltration and reuse
 - Aquifer Storage and Recovery (ASR)
 - Brackish groundwater desalination
 - Capture LBL springflows

AWRPTF Guiding Principles



- Affordable for every Austin resident
- Prefer locally sourced to avoid cost of importing water
- Environmentally sustainable and cost-effective
- Consistent with Imagine Austin Plan
- Utility decisions based on sustainable business plan
- Commit to becoming the most water-efficient city in Texas