

DESCRIPTION

FOR A 0.963 ACRE-FOOT AERIAL ENCROACHMENT BEING A PORTION OF EAST 15TH STREET IN TRAVIS COUNTY, TEXAS, ADJOINING TRACTS OF LAND BEING RED RIVER STREET AND SHOWN IN VOLUME 64, PAGE 28 OF THE PLAT RECORDS OF SAID COUNTY, TEXAS AND A CALLED 26,085 SQUARE FOOT TRACT AND DESCRIBED IN THAT DEED TO THE BOARD OF REGENTS OF THE UNIVERSITY OF TEXAS SYSTEM AND RECORDED AS TRACT NO. 7 IN VOLUME 4923, PAGE 1504 OF THE DEED RECORDS OF SAID COUNTY, SAID 0.963 ACRE-FOOT TRACT, AS SHOWN ON THE ACCOMPANYING SKETCH, BEING MORE PARTICULARLY DESCRIBED BY METES AND BOUNDS AS FOLLOWS:

BEGINNING FOR REFERENCE at a University of Texas brass disc monument numbered 322 found on the intersection of the north right-of-way line of East 15th Street and the west right-of-way line of Interstate Highway 35;

THENCE with the north right-of-way line of said East 15th Street, N 73° 35' 02" W for a distance of 849.91 feet to a calculated point for the northeast corner and **POINT OF BEGINNING** hereof, the bottom plane of the vertical space contained within said aerial encroachment shall be 519.0 feet to the top plane at elevation 539.0 feet;

THENCE through the interior of said East 15th Street, S 16° 27' 36" W for a distance of 99.86 feet to a calculated point on the south right-of-way line of said East 15th Street for the southeast corner hereof, the bottom plane of the vertical space contained within said aerial encroachment shall be 519.0 feet to the top plane at elevation 539.0 feet;

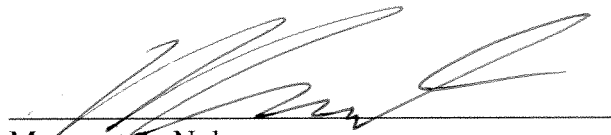
THENCE with the south right-of-way line of said East 15th Street, N 73° 34' 29" W for a distance of 20.00 feet to a calculated point for the southwest corner hereof, the bottom plane of the vertical space contained within said aerial encroachment shall be 517.0 feet to the top plane at elevation 539.0 feet;

THENCE through the interior of said East 15th Street, **N 16° 27' 36" E** for a distance of **99.86** feet to a calculated point on the north right-of-way line of said East 15th Street for the northwest corner hereof, the bottom plane of the vertical space contained within said aerial encroachment shall be 517.0 feet to the top plane at elevation 539.0 feet, from which a centerline monument previously found and shown in a CAD file provided by the City of Austin on the centerline of said 15th Street and the centerline line of Trinity Street bears, **N 73° 35' 02" W** for a distance of 446.98 feet and **S 16° 24' 58" W** for a distance of 50.00 feet;

THENCE with the north right-of-way line of said East 15th Street, in part with the south right-of-way line of said Red River Street and in part with the south line of said 26,085 square foot tract, **S 73° 35' 02" E** for a distance of **20.00** feet to the **POINT OF BEGINNING** hereof and containing 0.963 acre-foot.

Basis of bearings is based on Texas State Plane Coordinate System, Central Zone, NAD '83 CORS '96, Epoch 2002 and elevation datum is NAVD '88, Geoid 2012.

Surveyed under the direct supervision of the undersigned during June, 2013.



Margaret A. Nolen
Registered Professional Land Surveyor No. 5589
BAKER-AICKLEN & ASSOCIATES, INC.
507 West Liberty Avenue
Round Rock, TX 78664
(512) 244-9620



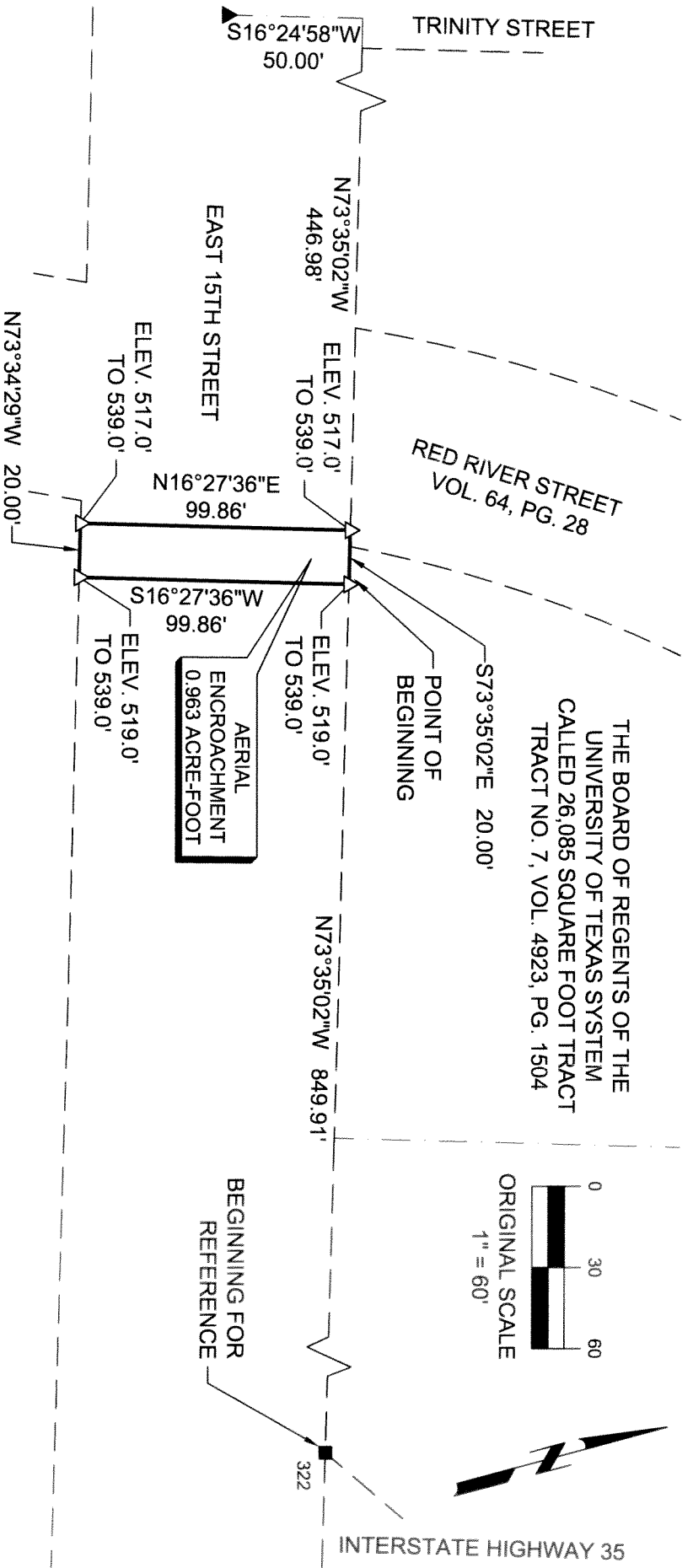
Job No.: 1493-3-002-20

Filename: K:\PROJECTS\2147-3-002_UT_Medical_School\BA-Survey\DESCRIPTIONS\METES AND BOUNDS\UT Seton Aerial Crossing .DOC

FIELD NOTES REVIEWED

By: Caleb Daniel L Date 07.22.2014

Engineering Support Section
Department of Public Works
and Transportation



UNIVERSITY OF TEXAS

JUNE, 2013



BAKER-AICKLEN & ASSOCIATES, INC.

507 WEST LIBERTY AVE.
ROUND ROCK, TEXAS 78664
(512) 244-9620

ENGINEERS | SURVEYORS | GIS | PLANNERS | LANDSCAPE ARCHITECTS

ENGINEERING FIRM # F-45
SURVEY FIRM # 100231-D
TBAE #1787

ROUND ROCK

LEGEND

| | |
|---|---|
| ▲ | CENTERLINE MONUMENT PREVIOUSLY FOUND AND SHOWN IN A CAD FILE PROVIDED BY THE CITY OF AUSTIN |
| △ | CALCULATED POINT |
| ■ | UNIVERSITY OF TEXAS BRASS DISC MONUMENT FOUND (NUMBERED AS SHOWN) |